

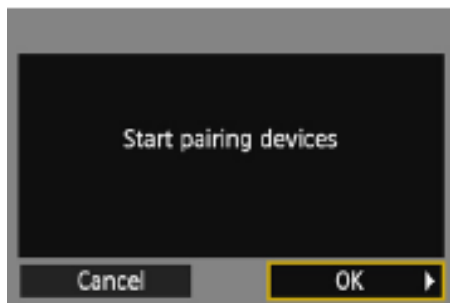


Remote Operation Using EOS Utility

With EOS Utility, you can use the provided Pairing Software to establish a connection between the camera and a computer.

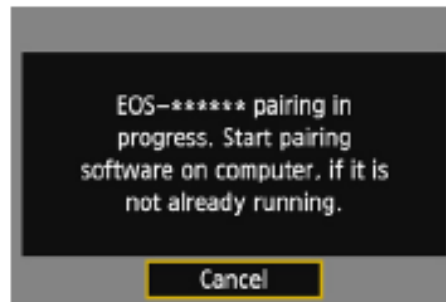
Pairing Software is installed automatically during “easy installation” of the software provided with the camera. If it is not installed, install it on the computer to be connected to the camera in advance.

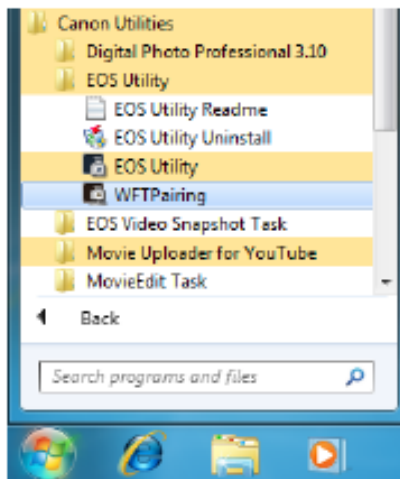
The configuration procedure is as follows, using Windows 7 as an example.



1 Select [OK].

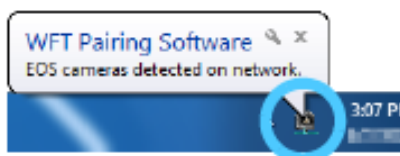
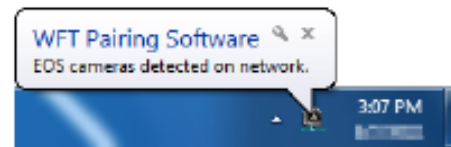
- First, the pairing screen is displayed.
- Press the <◀▶> key to select [OK], then press <SET>. The following message is displayed. ***** represents the last six digits of the MAC address of the camera to be connected.





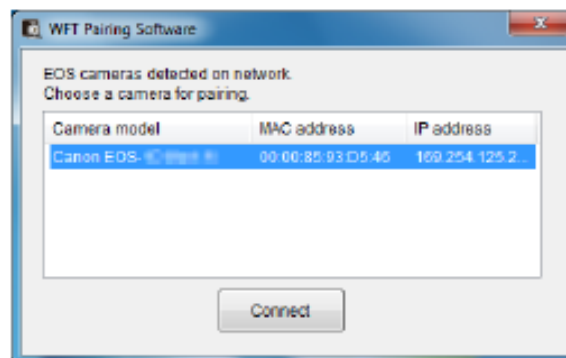
2 Start the pairing software.

- Normally, it is installed in the same location as EOS Utility.
- ▶ After the pairing software starts up, an icon is displayed on the task bar.
- ▶ When the camera is detected, a message is displayed.

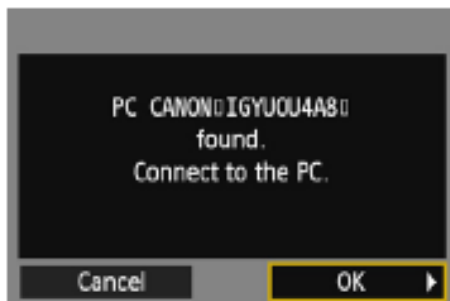


3 Double-click the pairing software icon.

- ▶ Detected cameras are listed.
Cameras that have already been connected are not included in the list.

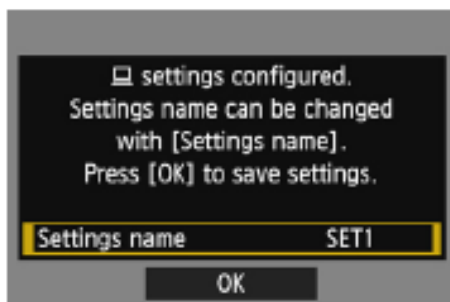


- Click [**Connect**].
- If multiple cameras are displayed, identify the camera to connect to by its MAC address displayed on the camera's LCD monitor.
- The MAC address can also be checked on the [**General sett.**] screen (p.149).



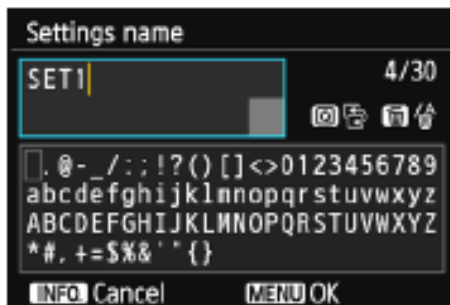
4 Select [OK].

- When the camera detects the computer on which you clicked [Connect] in step 3, the screen on the left is displayed.
- Press the <◀▶> key to select [OK], then press <SET>.



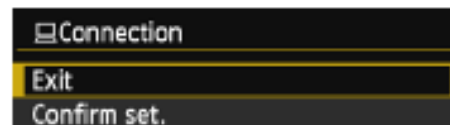
5 Perform further settings.

- To finish settings in this stage, press the <▲▼> key to select [OK], then press <SET> to go to step 6.
- To change the name of the settings, select [Settings name] and press <SET>.
- ▶ The virtual keyboard is displayed (p.14). Up to 30 characters can be entered for a settings name.



6 Save the settings.

- Select [OK] and press <SET> to save the settings.
- ▶ The [Connection] screen is displayed.



The EOS Utility network settings are now complete.

- There is no need to complete pairing again if you will continue using a particular camera and computer together after pairing without changing the settings.

Before your next PTP session, simply turn on the camera and start the pairing software. The connection between the camera and computer will be established automatically.

- You can add the pairing software to the software launched on your computer at startup. In EOS Utility, select [**Preferences**] and the [**Basic Settings**] tab, then append [**Add WFT Pairing Software to the Startup folder**] (for Macintosh, [**Register WFT Pairing Software in Login Options**]) with a checkmark.

Using EOS Utility

For EOS Utility instructions, refer to the EOS Utility instruction manual (CD-ROM). You can use functions of EOS Utility just as when the camera and computer are connected via an interface cable.

