



Connecting to a Computer

Connecting to a Computer

Configure computer settings for the connection, add the computer as a connection destination, and transfer images to the computer wirelessly using the included software CameraWindow as follows.



- When connected to a computer, the camera is used to establish the connection and then the computer (included software CameraWindow) is used to transfer images.

Preparing to Register a Computer

Prepare to register a computer.

Checking Your Computer Environment

For computer environments that allow Wi-Fi connection with a camera, refer to "System Requirements" (📖 19).

Additionally, the included software CameraWindow must be installed (📖 19).



- Windows 7 Starter and Home Basic editions are not supported.
- Windows 7 N (European version) and KN (South Korean version) require a separate download and installation of Windows Media Feature Pack.

For further details, see the following website.

<http://go.microsoft.com/fwlink/?LinkId=159730>

■ Checking Your Wi-Fi Environment

To use Wi-Fi, a Wi-Fi base unit (Wi-Fi router, etc.) that acts as your access point must be connected to a computer. Be sure to use a Wi-Fi base unit that conforms to the Wi-Fi standard listed in Specifications (📖 140).

If you are already using Wi-Fi, confirm the following items and mark each one on the Check sheet. For instructions on checking network settings, refer to the access point user guide.



- If system administrator status is needed to adjust network settings, contact the system administrator for details.
- These settings are very important for network security. Exercise adequate caution when changing these settings.

Check sheet

Network name (SSID/ESSID) The SSID or ESSID for the access point you use.	
Network certificate/data encryption (encryption method/ encryption mode) The method for encrypting data during transmission via Wi-Fi.	<input type="radio"/> None <input type="radio"/> WEP (open system authentication) <input type="radio"/> WPA-PSK (TKIP) <input type="radio"/> WPA-PSK (AES) <input type="radio"/> WPA2-PSK (TKIP) <input type="radio"/> WPA2-PSK (AES)
Encryption key (network key) The data encryption key used for transmission via Wi-Fi.	
Key index (sent key) The key specified when using WEP for Network certificate/ data encryption.	<input type="radio"/> 1



- A router is a device that creates a network (LAN) structure for connecting multiple computers. A router that contains an internal Wi-Fi function is called a "Wi-Fi router".
- This guide refers to all Wi-Fi routers and base stations as "access points".
- If you use MAC address filtering on your Wi-Fi network, be sure to add the camera's MAC address to your access point. You can check your camera's MAC address by choosing the [↑↑] tab, [Wi-Fi Settings], and then [Check MAC Address].

■ Computer Settings for Connecting via Wi-Fi (Windows only)

On a computer running Windows, you must configure the following settings before you can connect the camera to the computer wirelessly.



1 Confirm the computer is connected to Wi-Fi.

- For instructions on checking your network connection, refer to the computer user manual.



2 Configure the setting.

- Click in the following order: [Start] menu ► [All Programs] ► [Canon Utilities] ► [CameraWindow] ► [Wi-Fi connection setup].
- In the application that opens, follow the on-screen instructions and configure the setting.



- The following Windows settings are configured when you run the utility in step 2.
 - Turn on media streaming.
This will enable the camera to find the computer to access via Wi-Fi.
 - Turn on network discovery.
This will enable the computer to find the camera.
 - Turn on ICMP (Internet Control Message Protocol).
This allows you to check the network connection status.
 - Enable Universal Plug & Play (UPnP).
This will enable network devices to detect each other automatically.
- Some security software may prevent you from completing the settings as described here. Check the settings of your security software.

Adding a Computer

Add a computer to your list of devices to connect to via Wi-Fi. Follow these instructions when using a Wi-Fi Protected Setup (WPS) compatible access point to establish a push-button connection. If your access point is not WPS-compatible, establish a connection as described in "Connecting to Access Points in the List" (📖 98).



- WPS makes it easy to complete settings when connecting devices over Wi-Fi. You can use either Push Button Configuration Method or PIN Method for settings on a WPS supported device.
- Refer to the user guide provided with your access point to check if it supports WPS.
- Be sure to also read the user guide included with your access point.

1 Access the Wi-Fi menu.

- Press the <▲> button.



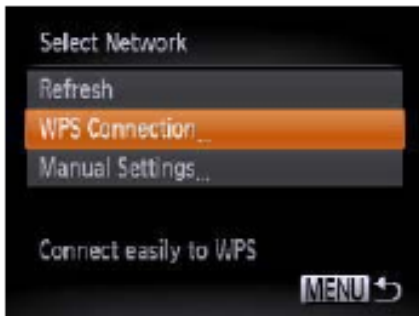
2 Choose a computer.

- Press the <▲><▼><◀><▶> buttons to choose [Laptop], and then press the <FUNC SET> button.



3 Choose [Add a Device].

- Press the <▲><▼> buttons to choose [Add a Device], and then press the <FUNC SET> button.
- ▶ A list of detected access points will be displayed in the [Select Network] screen.



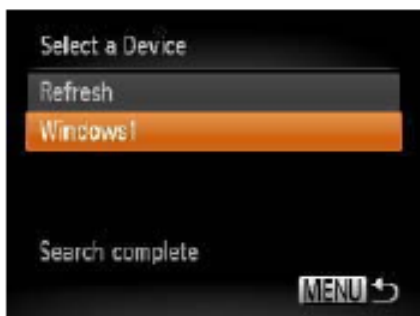
4 Choose [WPS Connection].

- Press the <▲><▼> buttons to choose [WPS Connection], and then press the <FUNC SET> button.



5 Choose [PBC Method].

- Press the <▲><▼> buttons to choose [PBC Method], and then press the <FUNC SET> button.



Hardware and Sound

View devices and printers

Add a device



6 Establish the connection.

- On the access point, hold down the WPS connection button for a few seconds.
- On the camera, press the <PINK SET> button.
- ▶ The camera will connect to the access point.
- ▶ A list of computers connected to the access point will appear in the [Select a Device] screen.

7 Choose a computer to connect to.

- Press the <▲><▼> buttons to choose the computer name, and then press the <PINK SET> button.
- When using a Macintosh computer, see Using CameraWindow to Transfer Images to a Computer (📖 98).

8 Install a driver (first Windows connection only).

- When the screen at left is displayed, click the Start menu on the computer, click [Control Panel], and then click [Add a device].

- Double click the connected camera icon.
- ▶ Driver installation will begin.

- ▶ After driver installation is complete, and the camera and computer connection is enabled, the AutoPlay screen will be displayed. Nothing will be displayed on the camera screen.
- Proceed to Using CameraWindow to Transfer Images to a Computer (📖 98).



- When you are in the vicinity of an access point that you have previously connected to, the camera will automatically connect to it in step 3. To change access points, select [Switch Network] from the screen that will be displayed when the connection is being established, and follow steps 4 – 5 in “Adding a Computer” (📖 96).



- You can connect to computers that you have already connected to by choosing them on the [Select a Device] screen in step 3.
 - If you chose [PIN Method] in step 5, a PIN code will be displayed on the screen. Be sure to set this code in the access point. Choose a device in the [Select a Device] screen. For further details, refer to the user guide included with your access point.
 - To add multiple computers, repeat the above procedures starting from step 1.
 - To disconnect from the camera, turn off the camera.
 - After you have accessed the Wi-Fi menu once, you can access it again by pressing the <▲> button. The recent target device is listed first, so you can easily connect again by pressing the <▲><▼> buttons to choose it. To add a new device, display the device selection screen by pressing the <◀><▶> buttons, and then configure the setting.
- If you prefer not to display recent target devices, press the <MENU> button, and on the [🔼] tab, choose [Wi-Fi Settings] > [Target History] > [Off].

Connecting to Access Points in the List

1 View the listed access points.

- View the listed networks (access points) as described in steps 1 – 3 of "Adding a Computer" (📖 96).



2 Choose an access point.

- Press the <▲><▼> buttons to choose a network (access point), and then press the <FUNC SET> button.



3 Enter the access point's encryption key.

- Press the <FUNC SET> button to access the keyboard, and then enter the encryption key (📖 88).
- Press the <▲><▼> buttons to choose [Next], and then press the <FUNC SET> button.



4 Choose [Auto].

- Press the <▲><▼> buttons to choose [Auto], and then press the <FUNC SET> button.
- ▶ A list of other devices connected to the access point will appear in the [Select a Device] screen.

5 Choose a computer to connect to.

- Choose the computer to connect to, following steps 7 – 8 in “Adding a Computer” (📖 97). The computer is now added to the list.



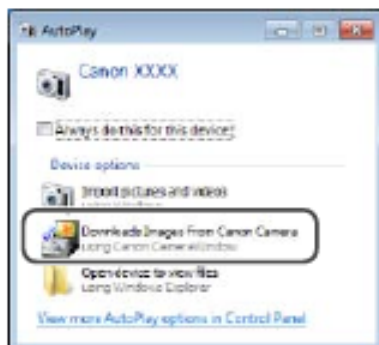
- For information on the access point's encryption key, refer to the body of the access point or its user manual.
- Up to 16 access points will be displayed. If no access points are detected, choose [Manual Settings] in step 2 to manually set an access point. Follow on-screen instructions and enter an SSID, security settings, and an encryption key.
- When you use an access point that you have already connected to for connecting to another device, [*] is displayed for the encryption key in step 3. To use the same encryption key, press the <▲><▼> buttons to choose [Next], and then press the <Ⓜ> button.
- To add multiple computers, repeat the above procedures starting from step 1.

Using CameraWindow to Transfer Images to a Computer

Use the computer (included software CameraWindow) to transfer images from the camera to the computer.



- For details on how to use CameraWindow, see the *Software Guide* (📖 18).



1 Display CameraWindow.

- In Windows, click [Downloads Images From Canon Camera using Canon CameraWindow].
- ▶ CameraWindow will be displayed.

- ▶ On a Macintosh computer, CameraWindow is automatically displayed when a Wi-Fi connection is established between the camera and computer.



2 Import images.

- Click [Import Images from Camera], and then click [Import Untransferred Images].
- ▶ Images are now saved to the Pictures folder on the computer, in separate folders named by date.
- Click [OK] in the screen that is displayed after image import is complete.



- If CameraWindow is not displayed when using a Macintosh computer, click the [CameraWindow] icon in the Dock.
- Movies will take longer to import since the file size is larger than still images.
- To disconnect from the camera, turn off the camera.
- You can also specify to save all images or only selected images to the computer, and you can change the destination folder. Refer to the *Software Guide* (📖 18) for details.