



**Installing Your Multifunction to  
Additional Computers on Your Network  
MAXIFY MB5020**

**Windows OS**

# Installing Your Multifunction to Additional Computers on Your Network

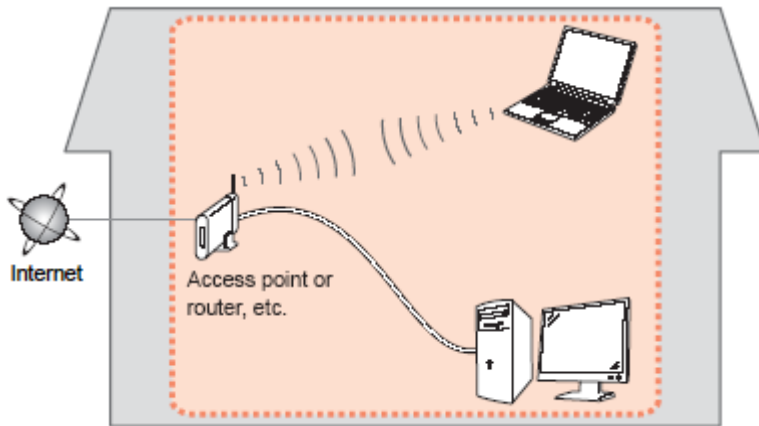
MAXIFY MB5020  
Windows OS

<b>Preparing to Connect My Multifunction to My Network</b>	<b>3</b>
Network Requirements	3
Notes on Wireless Connection	4
<b>Setting up the Network Connection</b>	<b>5</b>

# Preparing to Connect the Multifunction To the Network

## Network Requirements

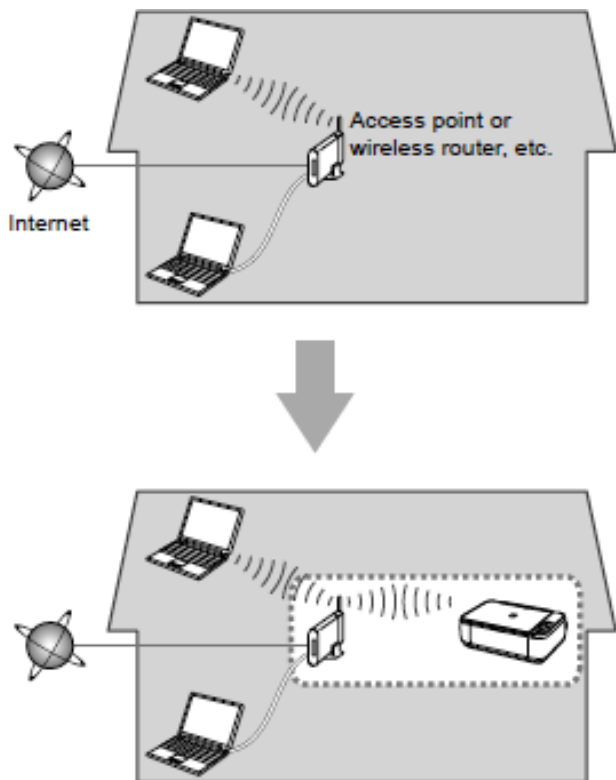
Before connecting the machine to the network, make sure that configuration of the computer and access point or router is complete, and that the computer is connected to the network.



## Wireless Connection

Before connecting the machine to the network, the computer needs to be connected to the network. Make sure that configuration of the computer and access point or router is complete.

# Preparing to Connect the Multifunction To the Network



## Notes on Network Connection

- The configuration, router functions, setup procedures and security settings of the network device vary depending on your system environment. For details, refer to your device's instruction manual or contact its manufacturer.
- In an office setup, consult your network administrator
- If you connect to a network that is not protected with security measures, there is a risk of disclosing data such as your personal information to a third party.
- Place the machine and computer on the same network segment.

# Setting Up the Network Connection

## Software Installation

To use the machine by connecting it to a computer, software including the drivers needs to be copied (installed) to the computer's hard disk. Installation time varies depending on the computer environment or the number of application software to be installed.

### **IMPORTANT**

- Log on as the administrator (or a member of the Administrators group).
- Quit all running applications before installation.
- Do not switch users during the installation process.
- Internet connection may be required during the installation. Connection fees may apply. Consult the internet service provider.
- It may be necessary to restart your computer during the installation process. Follow the on-screen instructions and do not remove the Setup CD-ROM during restarting. The installation resumes once your computer has restarted.
- If the firewall function of your security software is turned on, a warning message may appear that Canon software is attempting to access the network. If such a warning message appears, set the security software to always allow access.

# Setting Up the Network Connection

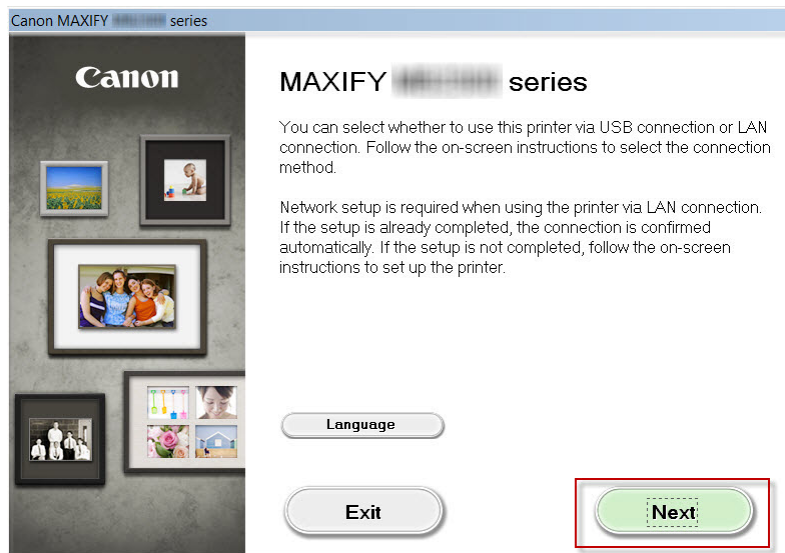
If your MB5020 has already been set up on your wireless network, it is only necessary to install the software on the additional computer(s). The printer does not have to be reset and no additional settings need to be made.

To begin the setup procedure, insert the Setup CD-ROM into your computer.\* Setup will start automatically.

\*If you don't have or cannot use the Setup CD-ROM, follow the steps below to start the setup.

- [Download the software](#) (click the link to download)
- Double-click the downloaded .exe file.

Click **Next** on the initial screen



# Setting Up the Network Connection

Continue following on-screen instructions. On the **Printers on Network List**, select your printer (its serial number will be listed in the **Serial Number** column) and click **Next**.

## Printers on Network List

Serial Number	MAC Address	IP Address
<input checked="" type="checkbox"/> ABCD12345	00:11:22:33:44:55	100.200.4.3

Setting printer could not be found on the list

1. To set a printer on the network, select one from the above printers list, and then click [Next].  
Serial number can be found on the back of the printer or the Letter of Guarantee.
2. If the setting printer could not be found on the above list, turn on the printer and click [Update].
3. If the printer could not still be found, select [Setting printer could not be found on the list], and then click [Next].
4. For USB Connection, also select [Setting printer could not be found], and then click [Next].

# Installing the Drivers & Software

Continue following on-screen instructions. On the **Software Installation List**, select \*software to install and click **Next**.

\***MP Drivers** is required and cannot be deselected. We recommend installing **Quick Toolbox** to take full advantage of the printer's features.

Canon MAXIFY series

## Software Installation List

The selected software will be installed. Make sure that the software you want to install is selected, and then click [Next].

<input checked="" type="checkbox"/> MP Drivers	260 MB	Drive C: 65711 MB free space
<input checked="" type="checkbox"/> User's Manual	20 MB	
<input checked="" type="checkbox"/> My Printer	14 MB	Total used space: 432 MB
<input checked="" type="checkbox"/> Speed Dial Utility	18 MB	
<input checked="" type="checkbox"/> Quick Toolbox	10 MB	
<input checked="" type="checkbox"/> Easy-WebPrint EX	110 MB	
<input type="checkbox"/> XPS Driver	130 MB	
<input type="checkbox"/> Additional Dictionaries for OCR (Chinese/Korean)	40 MB	

**Select All**

**Clear All**

Estimated installation time: 10 to 15 minutes

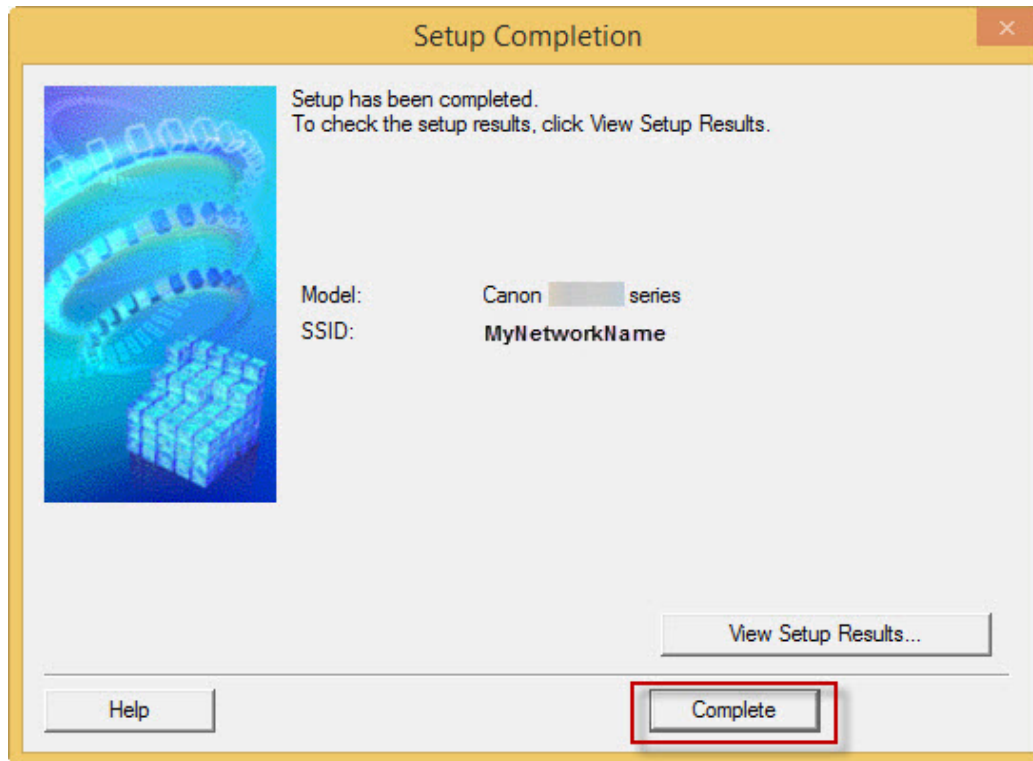
**Back** **Next**



# Installing the Drivers & Software

Continue following on-screen instructions.

When the **Setup Completion** dialog box appears, click **Complete**.



At this point, setup of the printer and network is complete. Continue to follow any remaining on-screen instructions to finish and exit the setup program.