



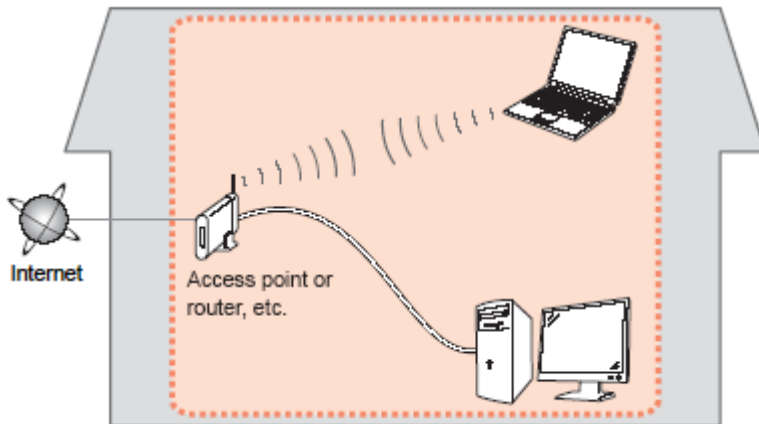
# **Installing Your Multifunction to Additional Computers on Your Network**

**MAXIFY MB2020  
Mac OS**

# Preparing to Connect to the Network

## Network Requirements

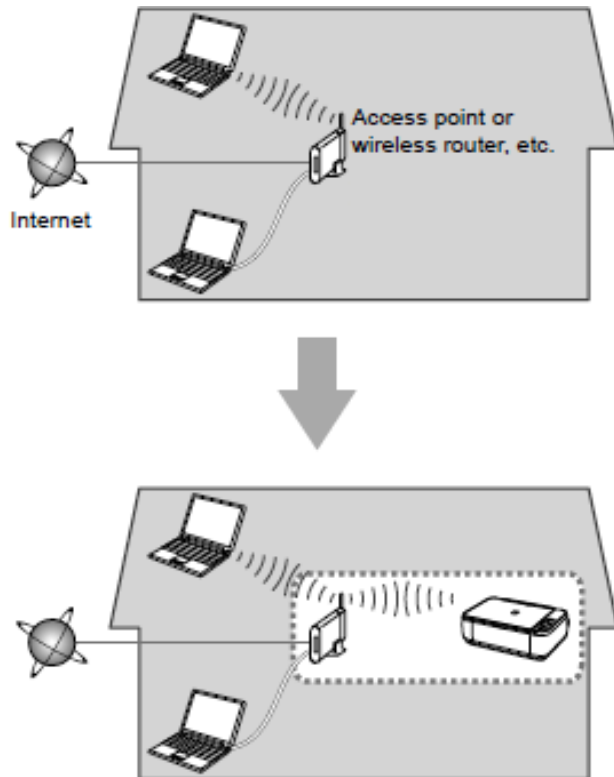
Before connecting the machine to the network, make sure that configuration of the computer and access point or router is complete, and that the computer is connected to the network.



## Wireless Connection

Before connecting the machine to the network, the computer needs to be connected to the network. Make sure that configuration of the computer and access point or router is complete.

# Preparing to Connect to the Network



## Notes on Network Connection

- The configuration, router functions, setup procedures and security settings of the network device vary depending on your system environment. For details, refer to your device's instruction manual or contact its manufacturer.
- In an office setup, consult your network administrator
- If you connect to a network that is not protected with security measures, there is a risk of disclosing data such as your personal information to a third party.
- Place the machine and computer on the same network segment.

# Setting up the Network Connection

## Software Installation

To use the machine by connecting it to a computer, software including the drivers needs to be copied (installed) to the computer's hard disk. Installation time varies depending on the computer environment or the number of application software to be installed.

### **IMPORTANT**

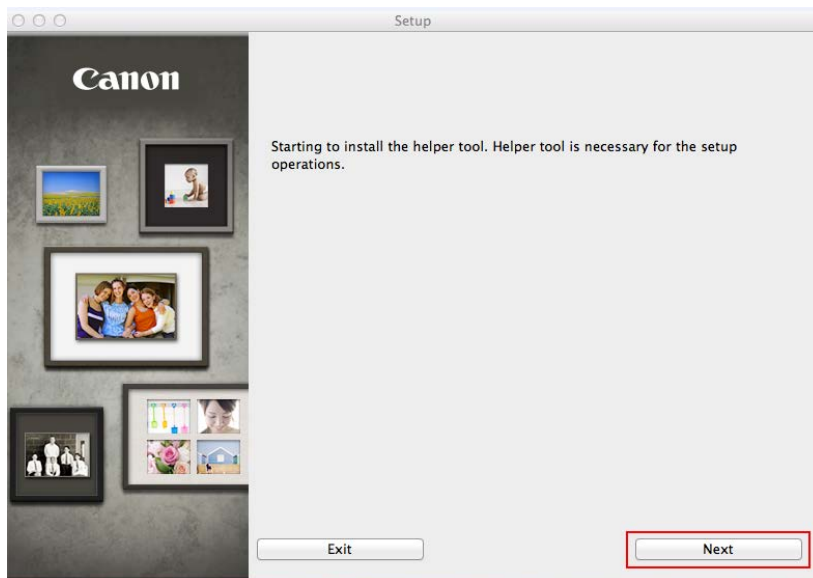
- Log on as the administrator (or a member of the Administrators group).
- Quit all running applications before installation.
- Do not switch users during the installation process.
- Internet connection may be required during the installation. Connection fees may apply. Consult the internet service provider.
- If the firewall function of your security software is turned on, a warning message may appear that Canon software is attempting to access the network. If such a warning message appears, set the security software to always allow access.

# Setting up the Network Connection

If your MB2020 has already been set up for on your wireless network , it is only necessary to install the software on the additional computer(s). The printer does not have to be reset and no additional settings need to be made.

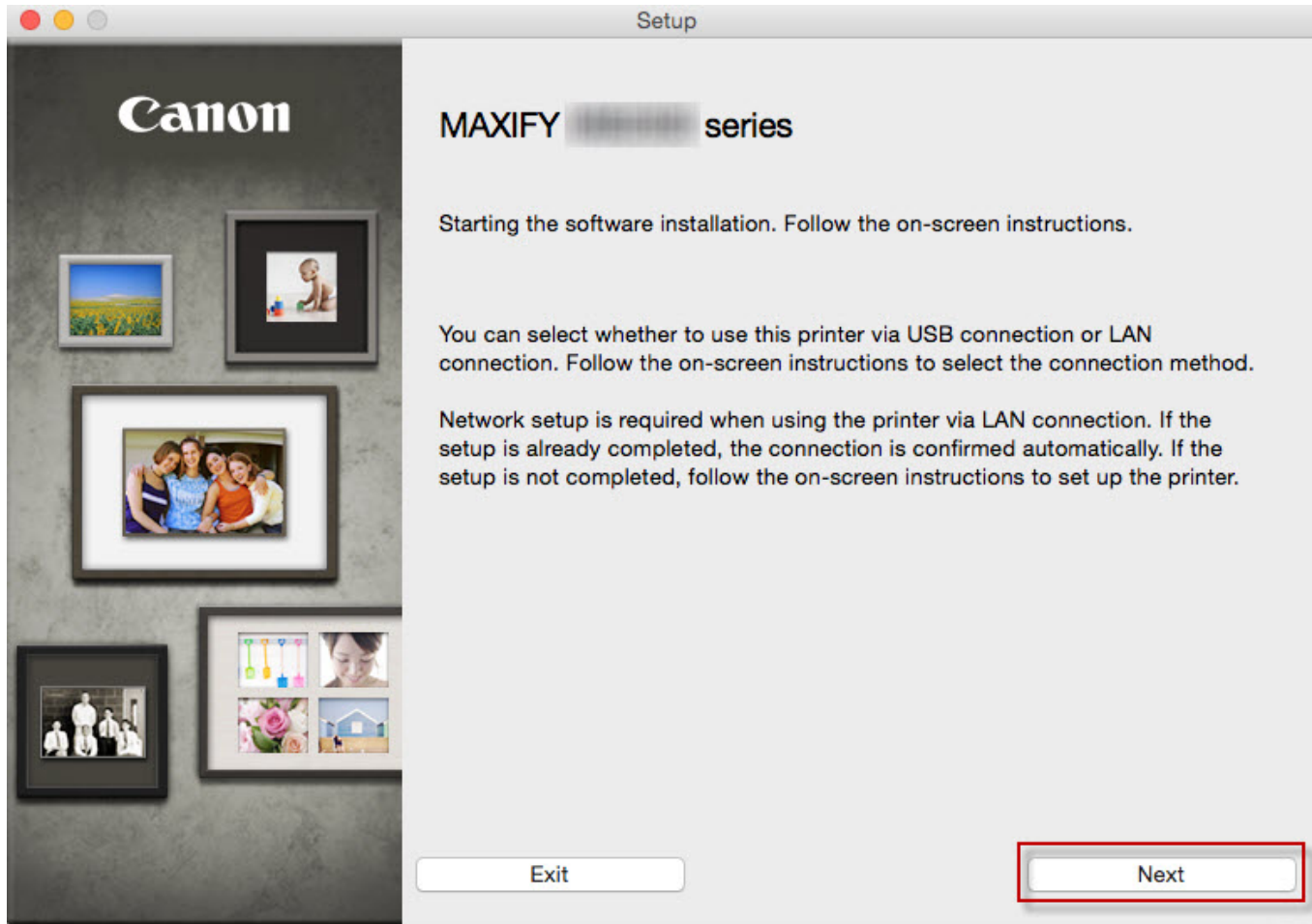
To begin setup of your MAXIFY MB2020 on your wireless network, you must first download the software to your computer.  
[Click here to download.](#)

After the file has downloaded successfully, double-click it to start the install procedure. Click **Next** on the first screen. If prompted, enter the Administrative Password to continue.



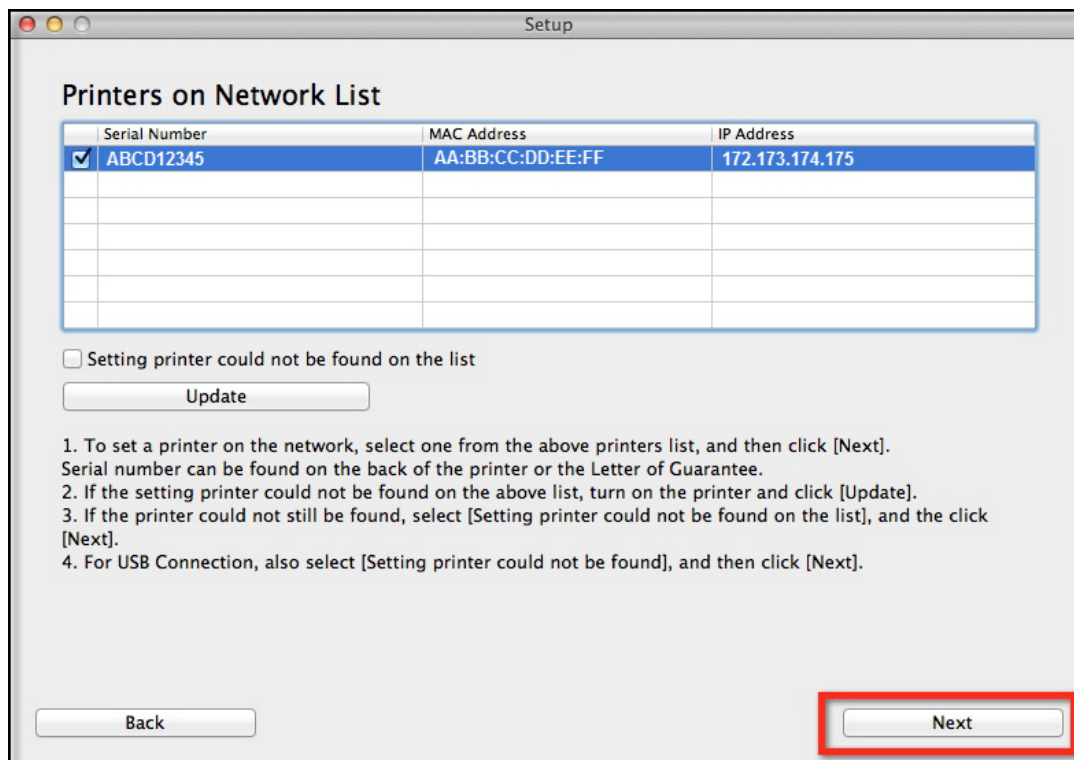
# Setting up the Network Connection

Click **Next** on the following screen.



# Setting up the Network Connection

Continue following on-screen instructions. On the **Printers on Network List**, select your printer (its serial number will be listed in the **Serial Number** column) and click **Next**.



# Installing the Drivers & Software

Continue following on-screen instructions. On the **Software Installation List**, select \*software to install and click **Next**.

\***MP Drivers** and **Canon IJ Network Tool** are required and cannot be deselected. We recommend installing **Quick Toolbox** and **IJ Scan Utility2** to take full advantage of the printer's features.

## Software Installation List

The selected software will be installed. Make sure that the software you want to install is selected, and then click [Next].

You need to install all the software below to use all functions of this printer.

<input checked="" type="checkbox"/>	MP Drivers	115 MB
<input type="checkbox"/>	IJ Scan Utility2	40 MB
<input type="checkbox"/>	User's Manual	400 MB
<input type="checkbox"/>	Speed Dial Utility	10 MB
<input type="checkbox"/>	Quick Toolbox	10 MB
<input checked="" type="checkbox"/>	Canon IJ Network Tool	20 MB
<input type="checkbox"/>		
<input type="checkbox"/>		
<input type="checkbox"/>		
<input type="checkbox"/>		
<input type="checkbox"/>		
<input type="checkbox"/>		
<input type="checkbox"/>		
<input type="checkbox"/>		

Drive Macintosh HD 962105 MB free space

Total used space: 210 MB

Select All

Clear All

Installation may take some time depending on your network environment.

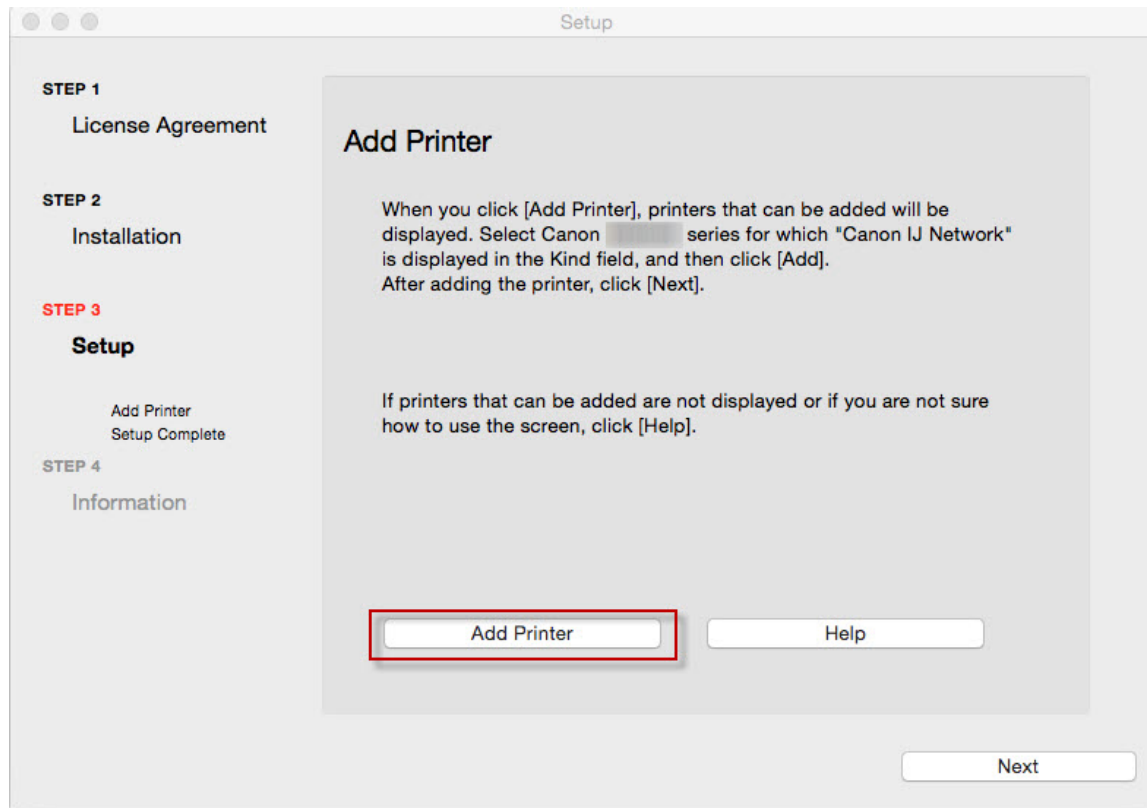
Back

Next



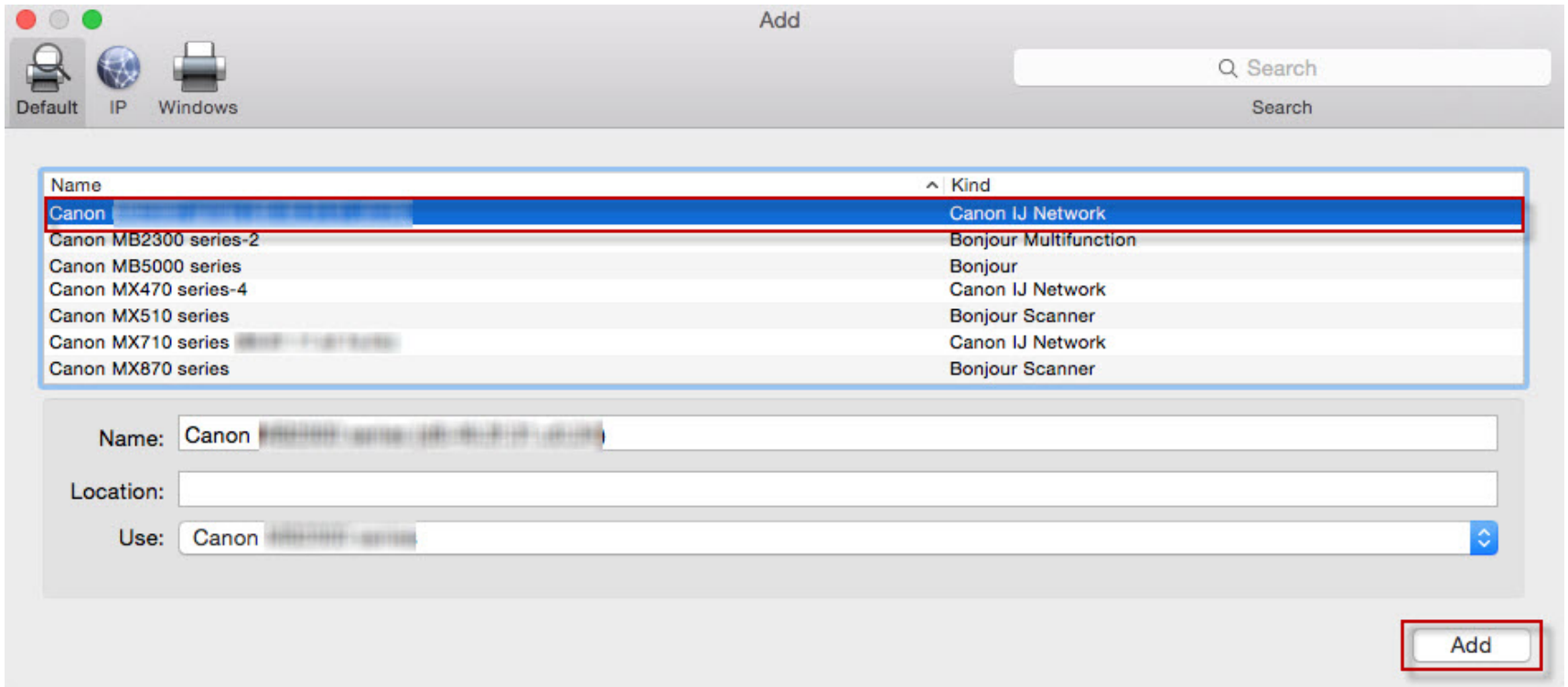
# Adding the Printer

Continue following the on-screen instructions.  
When the **Add Printer** screen appears, click **Add Printer**.



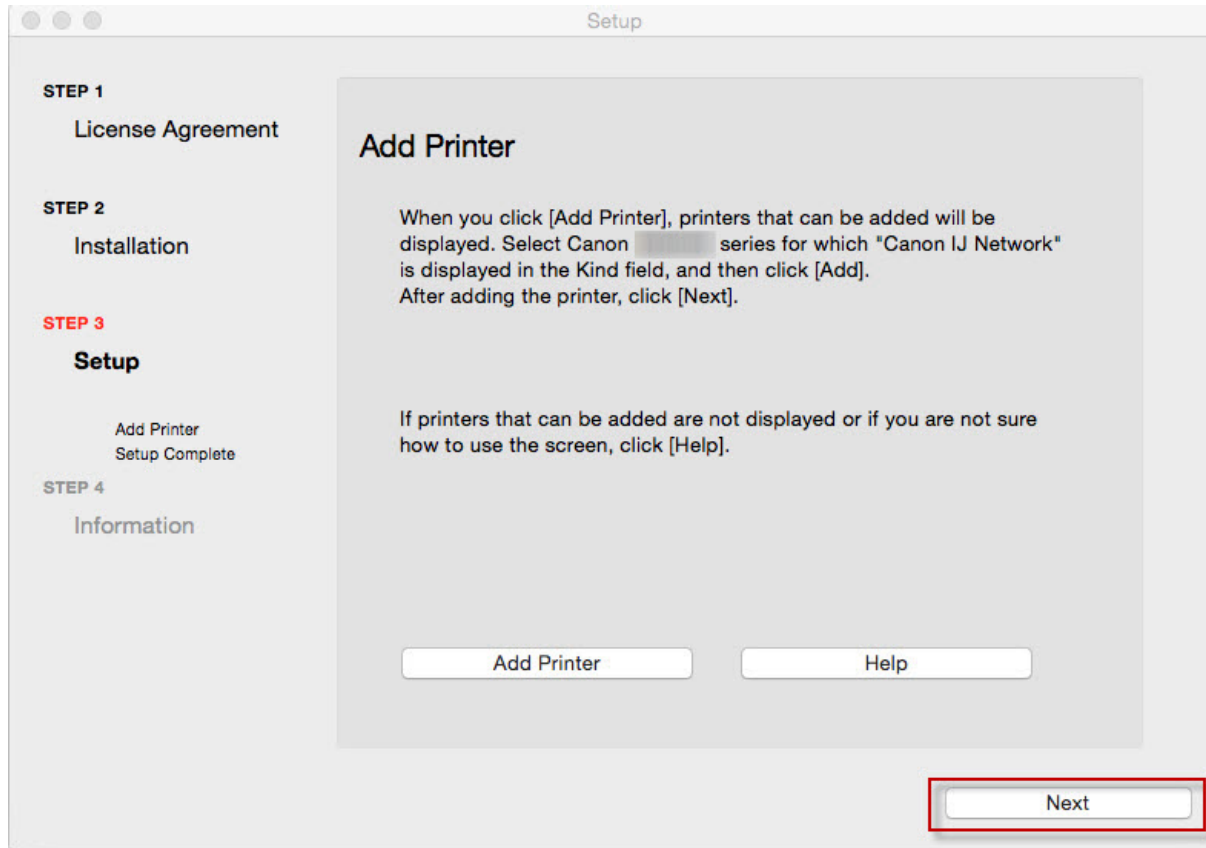
# Adding the Printer

Select the **Canon MB2000 series** with **Canon IJ Network** listed in the **Kind** column, then click **Add**.



# Adding the Printer

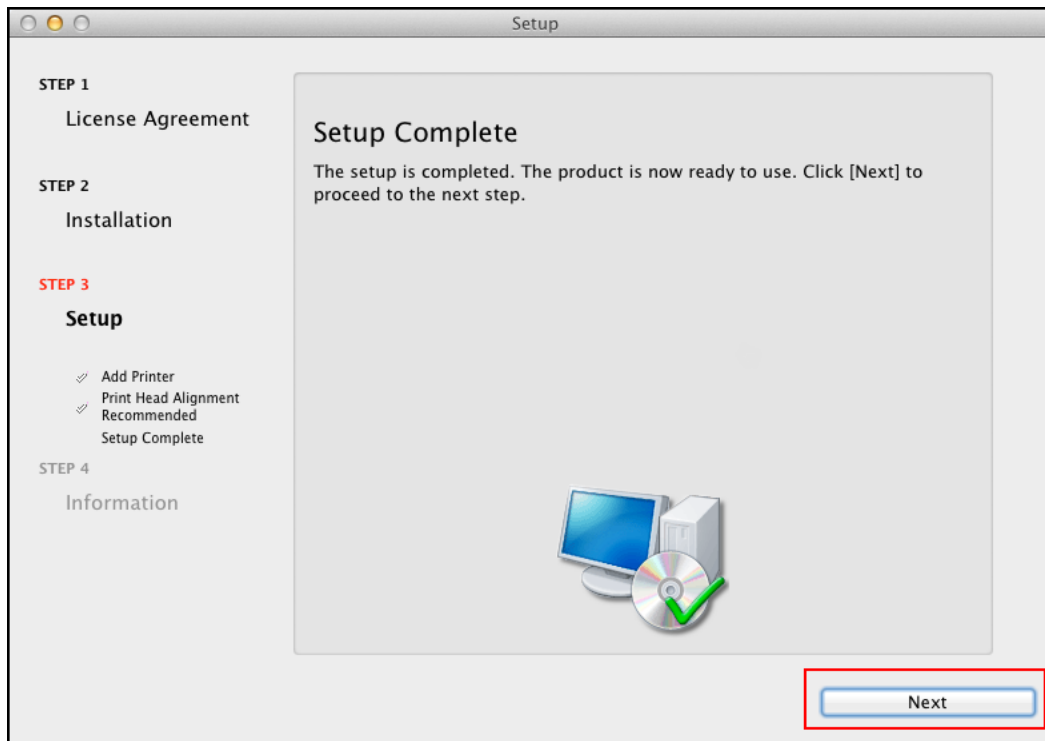
Click **Next** on the **Add Printer** screen.



# Completing the Setup

Continue following on-screen instructions.

When the **Setup Complete** screen appears, click **Next**.



At this point, setup of the printer and network is complete. Continue to follow any remaining on-screen instructions to finish and exit the setup program.