



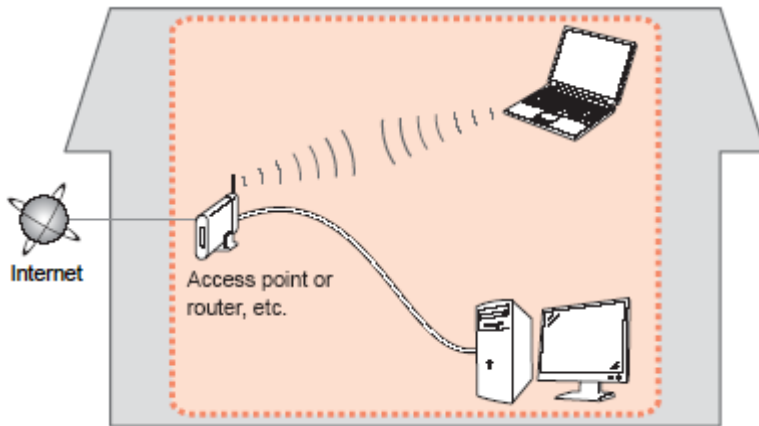
# **Installing Your Multifunction to Additional Computers on Your Network PIXMA iP110**

**Mac OS**

# Preparing to Connect My Multifunction To My Network

## Network Requirements

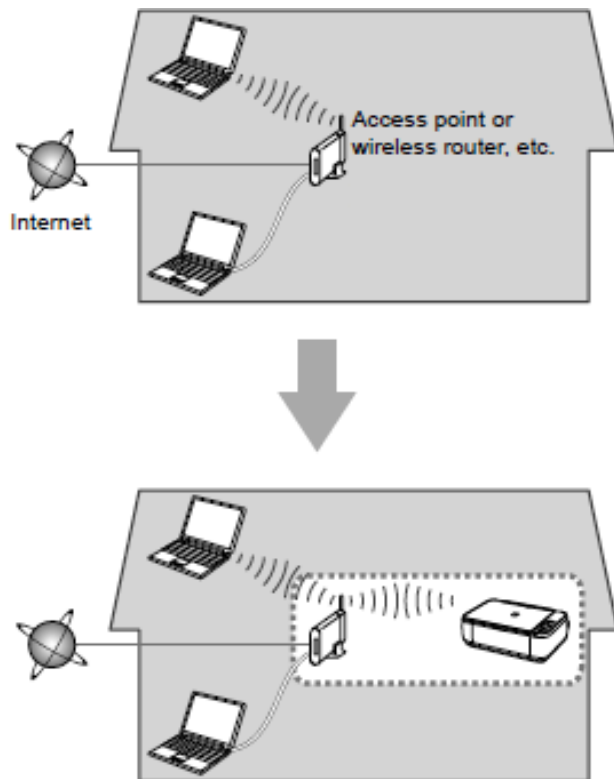
Before connecting the machine to the network, make sure that configuration of the computer and access point or router is complete, and that the computer is connected to the network.



## Wireless Connection

Before connecting the machine to the network, the computer needs to be connected to the network. Make sure that configuration of the computer and access point or router is complete.

# Preparing to Connect the Printer to the Network



## Notes on Network Connection

- The configuration, router functions, setup procedures and security settings of the network device vary depending on your system environment. For details, refer to your device's instruction manual or contact its manufacturer.
- In an office setup, consult your network administrator
- If you connect to a network that is not protected with security measures, there is a risk of disclosing data such as your personal information to a third party.
- Place the machine and computer on the same network segment.

# Installing the Drivers & Software

## Software Installation

To use the machine by connecting it to a computer, software including the drivers needs to be copied (installed) to the computer's hard disk. Installation time varies depending on the computer environment or the number of application software to be installed.

### **IMPORTANT**

- Log on as the administrator (or a member of the Administrators group).
- Quit all running applications before installation.
- Do not switch users during the installation process.
- Internet connection may be required during the installation. Connection fees may apply. Consult the internet service provider.
- If the firewall function of your security software is turned on, a warning message may appear that Canon software is attempting to access the network. If such a warning message appears, set the security software to always allow access.

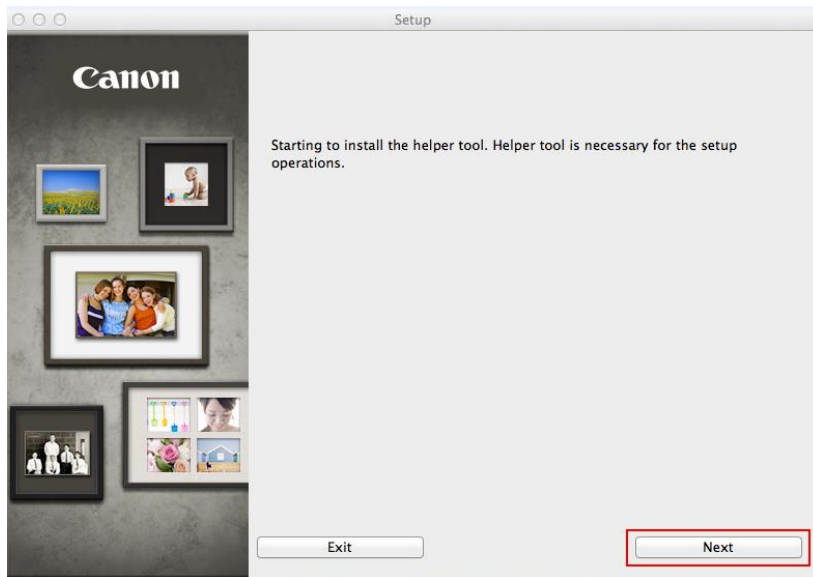
# Installing the Drivers & Software

If your iP110 has already been set up for on your wireless network , it is only necessary to install the software on the additional computer(s). The printer does not have to be reset and no additional settings need to be made.

To begin setup of your PIXMA iP110 on your wireless network, you must first download the software to your computer. [Click here to download.](#)

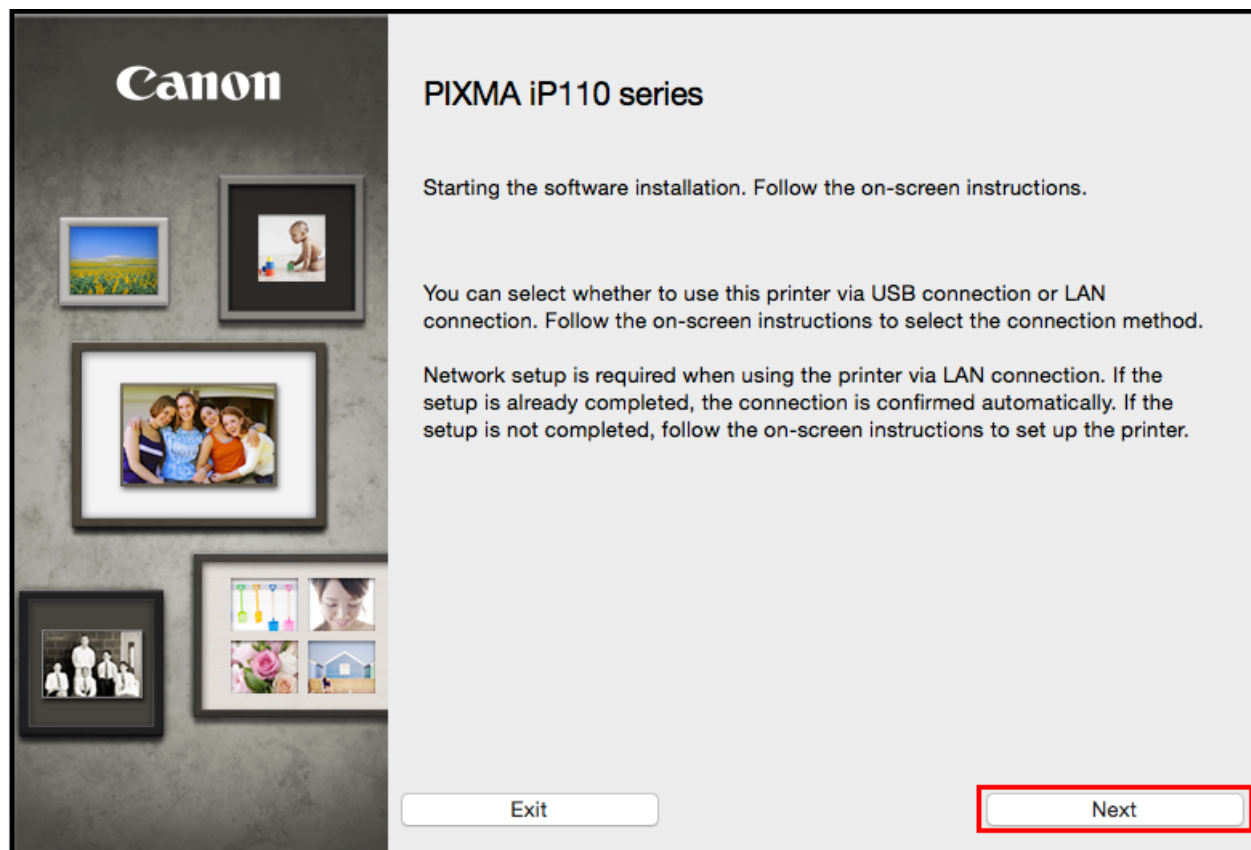
After the file has downloaded successfully, double-click it to start the install procedure.

Click **Next** on the first screen. If prompted, enter the Administrative Password to continue.



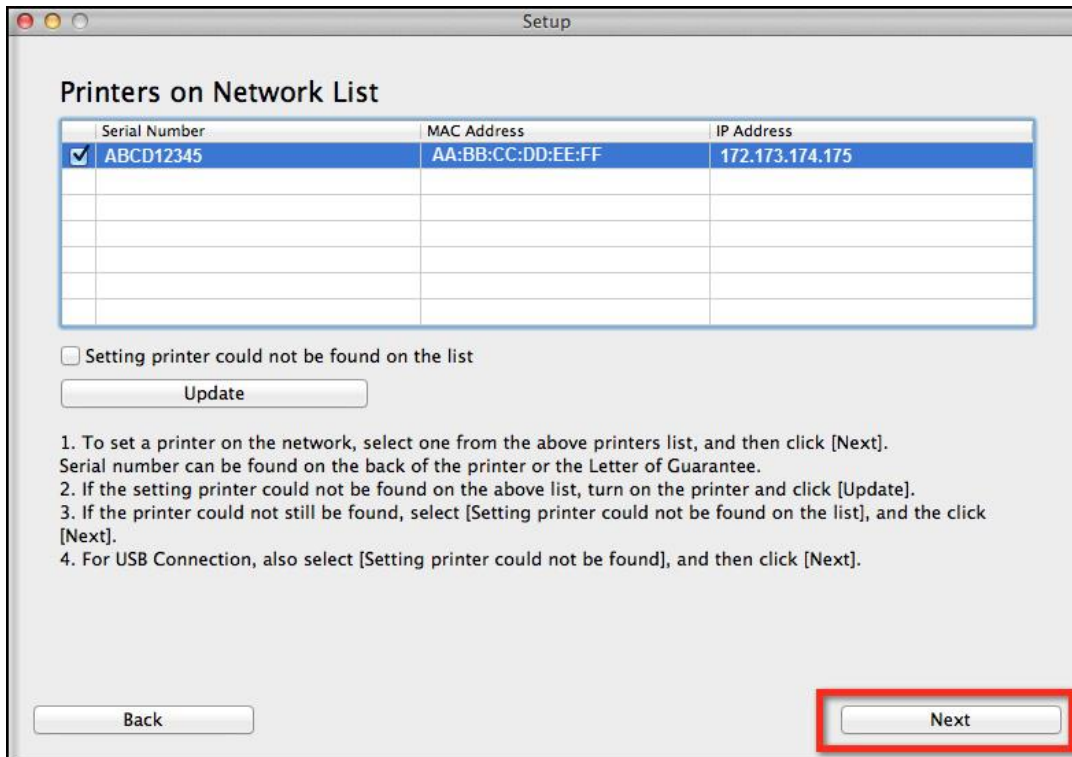
# Installing the Drivers & Software

Click **Next** on the following screen.



# Installing the Drivers & Software

Continue following on-screen instructions. On the **Printers on Network List**, select your printer (its serial number will be listed in the **Serial Number** column) and click **Next**.



Setup

### Printers on Network List

Serial Number	MAC Address	IP Address
<input checked="" type="checkbox"/> ABCD12345	AA:BB:CC:DD:EE:FF	172.173.174.175

☐ Setting printer could not be found on the list

1. To set a printer on the network, select one from the above printers list, and then click [Next].  
Serial number can be found on the back of the printer or the Letter of Guarantee.  
2. If the setting printer could not be found on the above list, turn on the printer and click [Update].  
3. If the printer could not still be found, select [Setting printer could not be found on the list], and then click [Next].  
4. For USB Connection, also select [Setting printer could not be found], and then click [Next].

# Installing the Drivers & Software

Continue following on-screen instructions. On the **Software Installation List**, select \*software to install and click **Next**.

\***Printer Driver** and **Canon IJ Network Tool** are required and cannot be deselected. We recommend installing **My Image Garden** and **Quick Menu** to take full advantage of your printer's features.

**Software Installation List**

The selected software will be installed. Make sure that the software you want to install is selected, and then click [Next].

You need to install all the software below to use all functions of this printer.

<input checked="" type="checkbox"/>	Printer Driver	100 MB	Drive Macintosh HD 961764 MB free space  Total used space: 184 MB
<input type="checkbox"/>	User's Manual	124 MB	
<input type="checkbox"/>	My Image Garden	705 MB	
<input type="checkbox"/>	Quick Menu	25 MB	
<input checked="" type="checkbox"/>	Canon IJ Network Tool	20 MB	
<input type="checkbox"/>			
<input type="checkbox"/>			
<input type="checkbox"/>			
<input type="checkbox"/>			
<input type="checkbox"/>			
<input type="checkbox"/>			
<input type="checkbox"/>			
<input type="checkbox"/>			

Select All

Clear All

Installation may take some time depending on your network environment.

Back

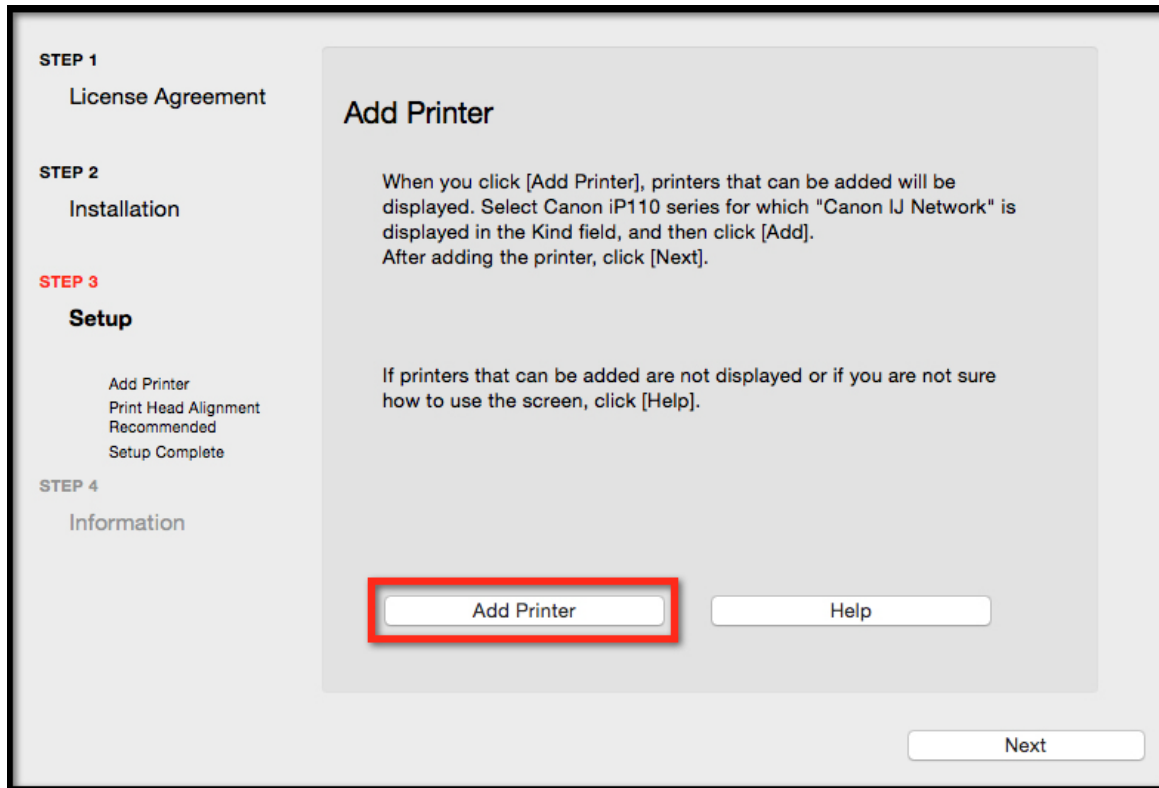
Next



# Adding the Printer

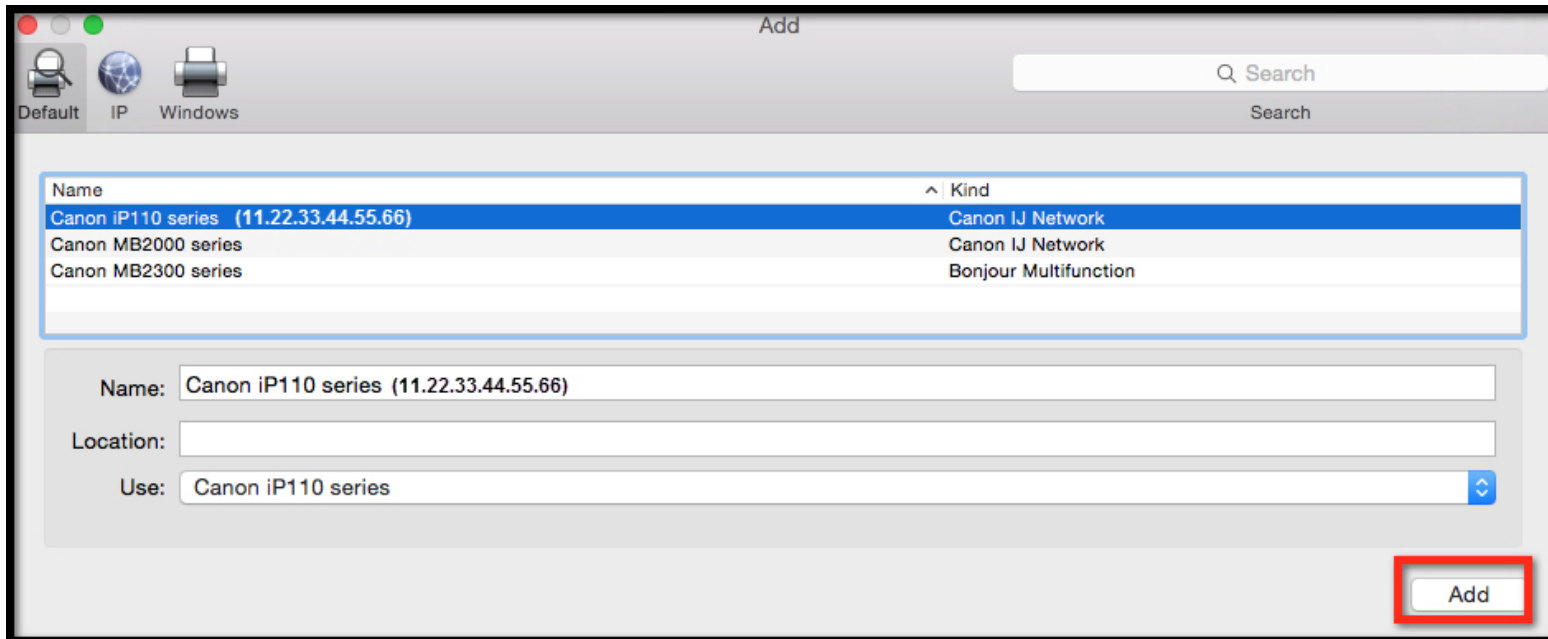
Continue following the on-screen instructions.

When the **Add Printer** screen appears, click **Add Printer**.



# Adding the Printer

Select the **Canon iP110** with **Canon IJ Network** listed in the **Kind** column, then click **Add**.



# Adding the Printer

Click **Next** on the **Add Printer** screen

The screenshot shows a software installation wizard window titled "Add Printer". On the left side, there is a vertical list of steps: STEP 1 License Agreement, STEP 2 Installation, STEP 3 Setup (highlighted in red), and STEP 4 Information. Under STEP 3, there are four sub-steps: Add Printer, Print Head Alignment, Recommended, and Setup Complete. The main content area of the wizard contains the following text: "When you click [Add Printer], printers that can be added will be displayed. Select Canon iP110 series for which 'Canon IJ Network' is displayed in the Kind field, and then click [Add]. After adding the printer, click [Next].". Below this text, there is a second paragraph: "If printers that can be added are not displayed or if you are not sure how to use the screen, click [Help].". At the bottom of the main content area, there are two buttons: "Add Printer" and "Help". At the bottom right of the entire window, there is a "Next" button, which is highlighted with a red rectangular border.

**STEP 1**  
License Agreement

**STEP 2**  
Installation

**STEP 3**  
**Setup**

Add Printer  
Print Head Alignment  
Recommended  
Setup Complete

**STEP 4**  
Information

## Add Printer

When you click [Add Printer], printers that can be added will be displayed. Select Canon iP110 series for which "Canon IJ Network" is displayed in the Kind field, and then click [Add]. After adding the printer, click [Next].

If printers that can be added are not displayed or if you are not sure how to use the screen, click [Help].

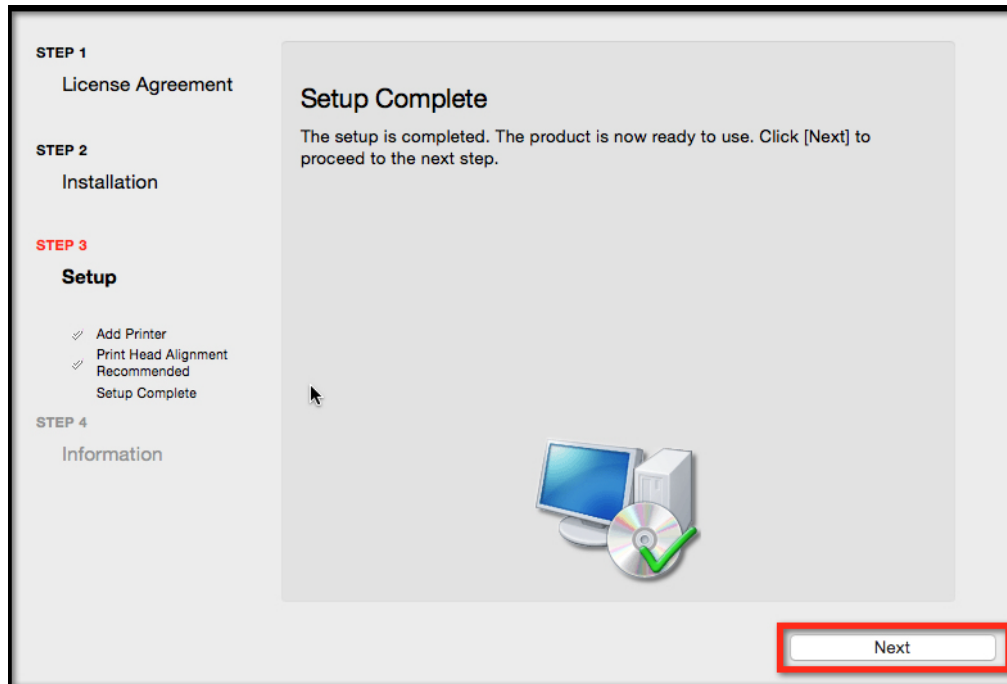
Add Printer Help

Next

# Completing the Setup

Continue following on-screen instructions.

When the **Setup Complete** screen appears, click **Next**.



At this point, setup of the printer and network is complete. Continue to follow any remaining on-screen instructions to finish and exit the setup program.