



Installing Your Multifunction to Additional Computers on Your Network

PIXMA MX722

Windows OS

Installing Your Multifunction to Additional Computers on Your Network

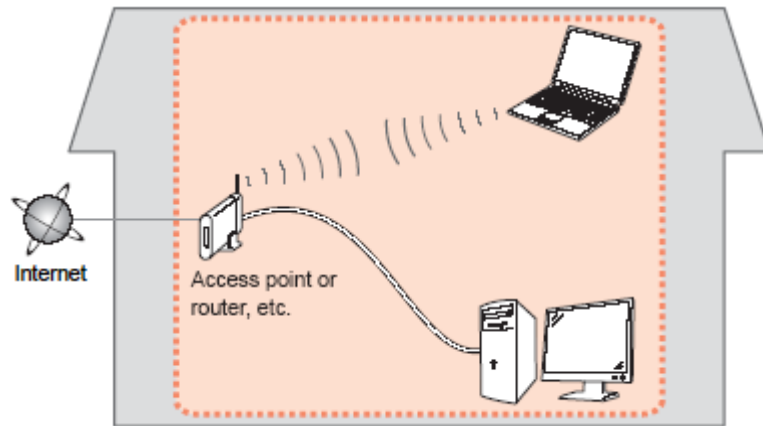
PIXMA MX722
Windows OS

Preparing to Connect My Multifunction to My Network	3
Network Requirements	3
Notes on Wireless Connection	4
Installing the Drivers	5

Preparing to Connect My Multifunction To My Network

Network Requirements

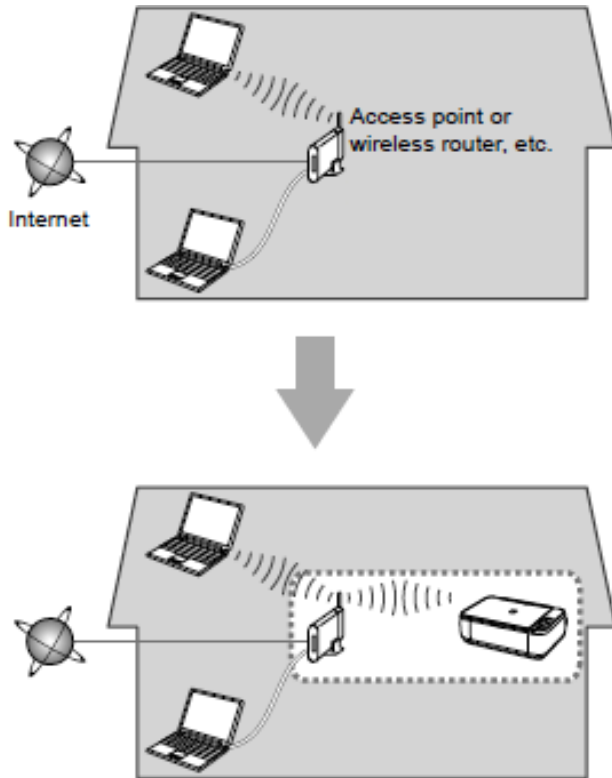
Before connecting the machine to the network, make sure that configuration of the computer and access point or router is complete, and that the computer is connected to the network.



Wireless Connection

Before connecting the machine to the network, the computer needs to be connected to the network. Make sure that configuration of the computer and access point or router is complete.

Preparing to Connect My Multifunction To My Network



An "Ad-hoc connection," which establishes a direct connection to the computer over a wireless connection without using an access point, is not supported.

Notes on Network Connection

- The configuration, router functions, setup procedures and security settings of the network device vary depending on your system environment. For details, refer to your device's instruction manual or contact its manufacturer.
- In an office setup, consult your network administrator
- If you connect to a network that is not protected with security measures, there is a risk of disclosing data such as your personal information to a third party.
- If an error message appears or if you have trouble with the network connection, refer to the printed manual: Network Setup Troubleshooting.
- Place the machine and computer on the same network segment.

Installing the Drivers & Software

Software Installation

To use the machine by connecting it to a computer, software including the drivers needs to be copied (installed) to the computer's hard disk. (The installation time varies depending on the computer environment or the number of application software to be installed.)

IMPORTANT

- Log on as the administrator (or a member of the Administrators group).
- Quit all running applications before installation.
- Do not switch users during the installation process.
- Internet connection may be required during the installation. Connection fees may apply. Consult the internet service provider.
- It may be necessary to restart your computer during the installation process. Follow the on-screen instructions and do not remove the Setup CD-ROM during restarting. The installation resumes once your computer has restarted.
- If the firewall function of your security software is turned on, a warning message may appear that Canon software is attempting to access the network. If such a warning message appears, set the security software to always allow access.

Installing the Drivers & Software

Installing the PIXMA MX722 to additional Windows computers on your Wireless Network

If your MX722 has already been set up on your wireless network, it is only necessary to install the software on the additional computer(s). No additional settings need to be made on the printer. Network connection will be confirmed automatically.

Simply insert the Setup CD-ROM that came with your printer into your CD-ROM drive and proceed through the easy to follow instructions.

1. Insert the CD-ROM into the computer*.



*If you don't have or cannot use your Setup CD-ROM, you can still install the printer on your computer using drivers available on our web site. [Click here for information](#)

When the Software Installation List screen appears, select any software to be installed. **MP Drivers** is required for the printer to be able to print and scan and cannot be de-selected. **My Image Garden** and **Quick Menu** are highly recommended to take full advantage of your printer's features. Click **Next** after selecting the software.

Software Installation List

The selected software will be installed. Make sure that the software you want to install is selected. To proceed, click [Next].

<input checked="" type="checkbox"/> MP Drivers	260 MB
<input checked="" type="checkbox"/> User's Manual	10 MB
<input checked="" type="checkbox"/> My Printer	14 MB
<input checked="" type="checkbox"/> My Image Garden	680 MB
<input checked="" type="checkbox"/> Speed Dial Utility	10 MB
<input checked="" type="checkbox"/> Quick Menu	25 MB
<input checked="" type="checkbox"/> Easy-WebPrint EX	25 MB
<input type="checkbox"/> XPS Driver	130 MB

Continue to follow any remaining instructions

Installing the PIXMA MX722 on Your Wireless Network

If you can't find or use your Setup CD-ROM, you may download the **MX720 series MP Drivers**, which includes a step-by-step installation, by following the instructions below:

1. [Click here to access the MX722 Drivers & Software page.](#)
2. Select the operating system and version of your computer (see example below).
3. Expand the 'Drivers' section, if necessary, by clicking the red triangle.
4. Click on '**MX720 series MP Drivers**'.
5. After reading the details and disclaimer, click 'I Agree – Begin Download' and save the file to your computer.
6. Once the download is complete, double-click the file from its download location to begin the installation.

Drivers & Software

Select an Operating System and OS Version from the drop down menu below then click on a view the latest supported files for your product. Click on the file description to navigate to download the file. Click on "I Agree - Begin Download" to start downloading.

Windows Windows 8 (x64) [How to 1](#)

Select Language: English Spanish All

Show All

▼ Drivers Sort by Most Recent Post Date

File Description	Date
<input checked="" type="checkbox"/> MX720 series MP Drivers Ver. 1.00 (Windows 8 ...	01/31/13
<input checked="" type="checkbox"/> MX720 series XPS Printer Driver Ver. 5.65 (Wind...	01/07/13

In the same manner, **My Image Garden** and **Quick Menu** are available as downloads in the **Software** section of **Drivers & Software**. These programs are recommended to take full advantage of your printer's features. Double-click the downloaded file(s) to start the installation.