



# **Installing Your Multifunction to Additional Computers on Your Network**

**PIXMA MX722**

**Macintosh OS**

# Installing Your Multifunction to Additional Computers on Your Network

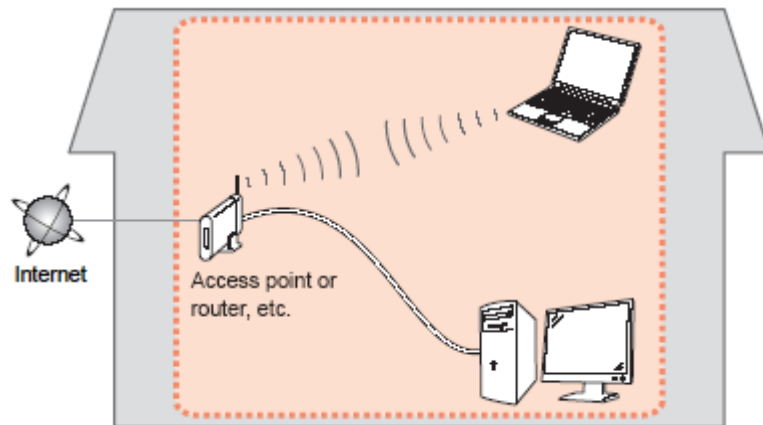
PIXMA MX722  
Macintosh OS

<b>Preparing to Connect My Multifunction to My Network</b>	<b>3</b>
Network Requirements	3
Notes on Wireless Connection	4
<b>Installing the Drivers</b>	<b>5</b>

# Preparing to Connect My Multifunction To My Network

## Network Requirements

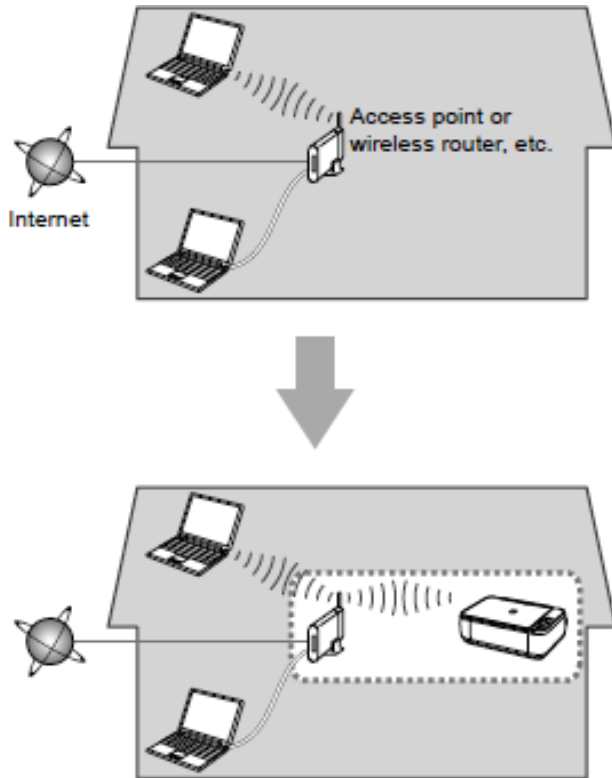
Before connecting the machine to the network, make sure that configuration of the computer and access point or router is complete, and that the computer is connected to the network.



## Wireless Connection

Before connecting the machine to the network, the computer needs to be connected to the network. Make sure that configuration of the computer and access point or router is complete.

# Preparing to Connect My Multifunction To My Network



An "Ad-hoc connection," which establishes a direct connection to the computer over a wireless connection without using an access point, is not supported.

## Notes on Network Connection

- The configuration, router functions, setup procedures and security settings of the network device vary depending on your system environment. For details, refer to your device's instruction manual or contact its manufacturer.
- In an office setup, consult your network administrator
- If you connect to a network that is not protected with security measures, there is a risk of disclosing data such as your personal information to a third party.
- If an error message appears or if you have trouble with the network connection, refer to the printed manual: Network Setup Troubleshooting.
- Place the machine and computer on the same network segment.

# Installing the Drivers & Software

## Software Installation

To use the machine by connecting it to a computer, software including the drivers needs to be copied (installed) to the computer's hard disk. (The installation time varies depending on the computer environment or the number of application software to be installed.)

### **IMPORTANT**

- Log on as the administrator (or a member of the Administrators group).
- Quit all running applications before installation.
- Do not switch users during the installation process.
- Internet connection may be required during the installation. Connection fees may apply. Consult the internet service provider.
- It may be necessary to restart your computer during the installation process. Follow the on-screen instructions and do not remove the Setup CD-ROM during restarting. The installation resumes once your computer has restarted.
- If the firewall function of your security software is turned on, a warning message may appear that Canon software is attempting to access the network. If such a warning message appears, set the security software to always allow access.

# Installing the Drivers & Software

## Installing the PIXMA MX722 to additional Mac computers on your Wireless Network

If your MX722 has already been set up on your wireless network, it is only necessary to install the software on the additional computer(s). No additional settings need to be made on the printer. Network connection will be confirmed automatically.

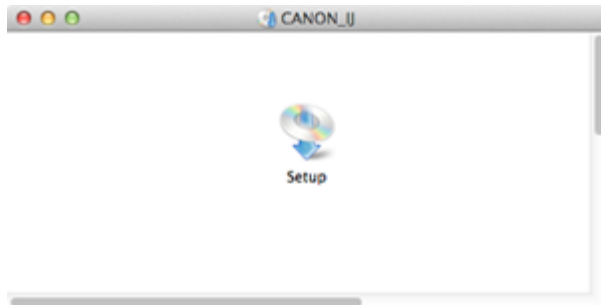
Simply insert the Setup CD-ROM that came with your printer into your CD-ROM drive and proceed through the easy to follow instructions.

# Installing the Drivers & Software

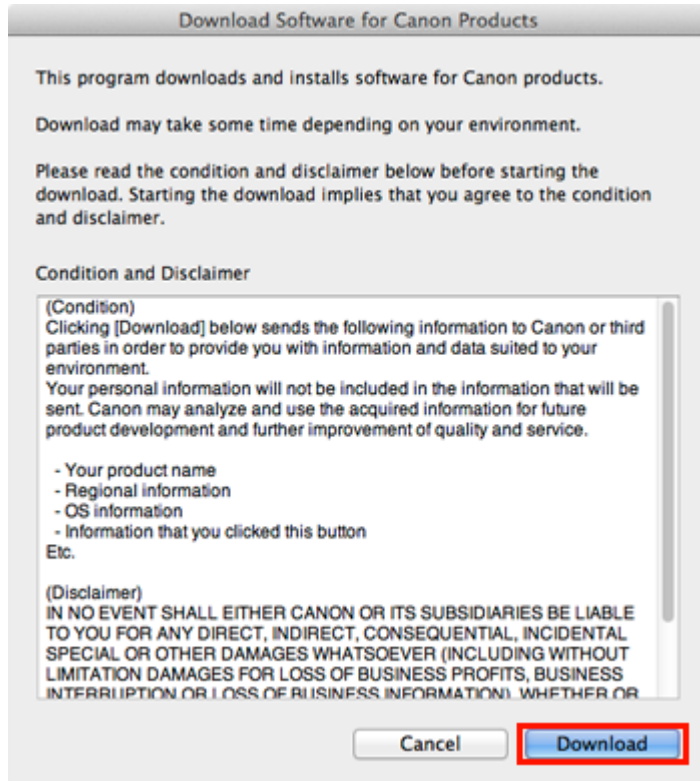
1. Insert the CD-ROM into the computer.



2. Double-click the **[Setup]** icon in the CD-ROM folder, then click **[Download]** in the subsequent window.



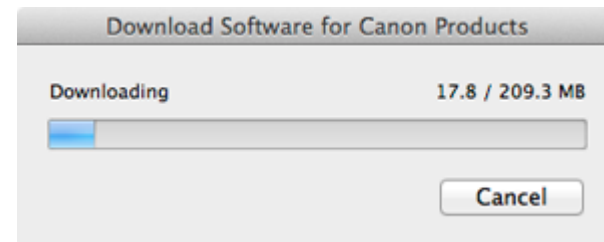
# Installing the Drivers & Software



## REFERENCE



- When the CD-ROM folder does not open automatically, double-click the CD-ROM icon displayed on the desktop.
- The screen below is displayed while downloading.

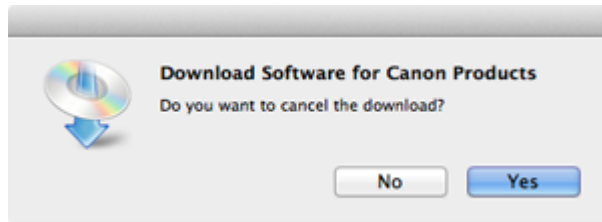




# Installing the Drivers & Software

If you click [**Cancel**] while downloading, you will see the following screen.

- If you click [**No**], you will return to the screen displayed while downloading.
- If you click [**Yes**], the download is cancelled. In this case, the files under the download are deleted.



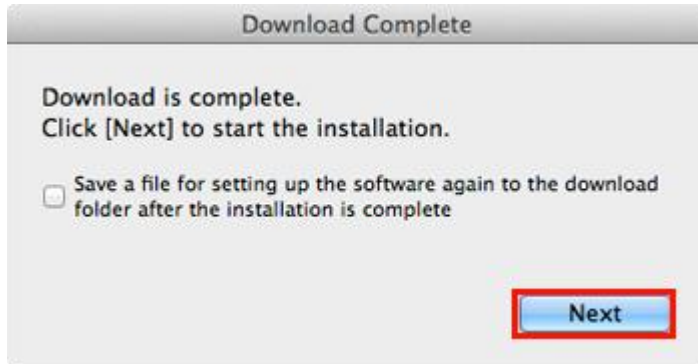
When the download fails, the screen below is displayed.

Click [**OK**], and you will go back to the screen for downloading in the procedure .



# Installing the Drivers & Software

3. When the download is complete, the screen below is displayed. Click **[Next]**.



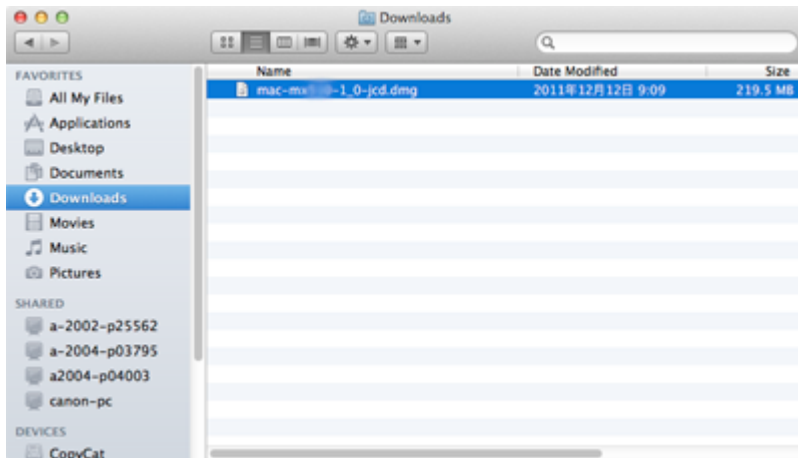
## REFERENCE

Select "Save a file for setting up the software again to the download folder after the installation is complete," and the file will be saved to the download folder.



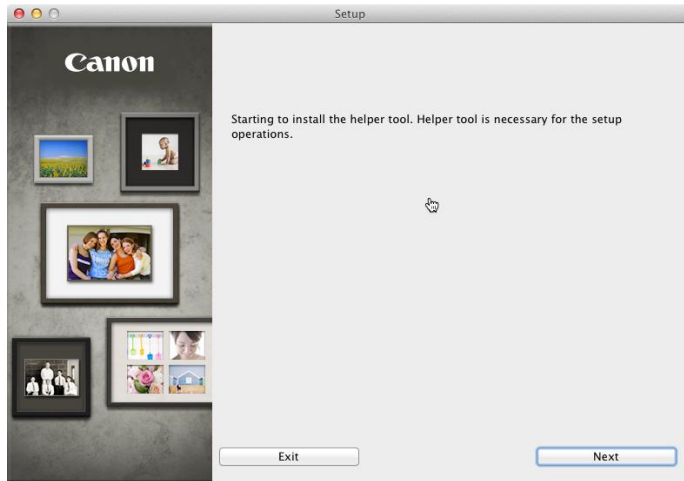
# Installing the Drivers & Software

You can perform the setup later using this file.



# Installing the Drivers & Software

4. Click **Next** to install the helper tool.



5. In the subsequent screen, enter the administrator name and password. Then click **[OK]**.



6. Continue to follow any On-screen instructions to install the software. On the **Software Installation List** screen, select any software to be installed. **MP Drivers** and **Canon IJ Network Tool** which are pre-selected are required for the printer to be able to be used over the network. **My Image Garden**, **Quick Menu** and **ScanGear** are highly recommended to take full advantage of your printer's features. Click **Next** after selecting the software.

## Software Installation List

The selected software will be installed. Make sure that the software you want to install is selected. Click [Next].

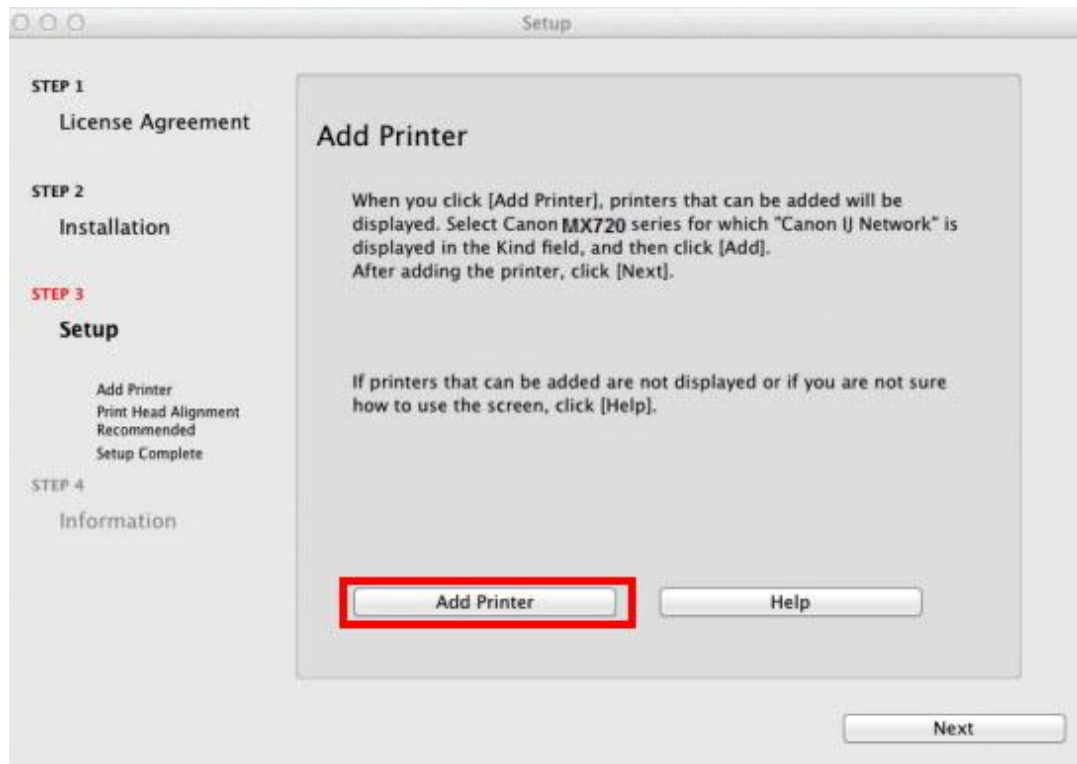
You need to install all the software below to use all functions of this printer.

<input checked="" type="checkbox"/>	MP Drivers	180 MB
<input type="checkbox"/>	ScanGear	80 MB
<input type="checkbox"/>	User's Manual	100 MB
<input type="checkbox"/>	My Image Garden	680 MB
<input type="checkbox"/>	Speed Dial Utility	10 MB
<input type="checkbox"/>	Quick Menu	25 MB
<input checked="" type="checkbox"/>	Canon IJ Network Tool	20 MB

# Installing the Drivers

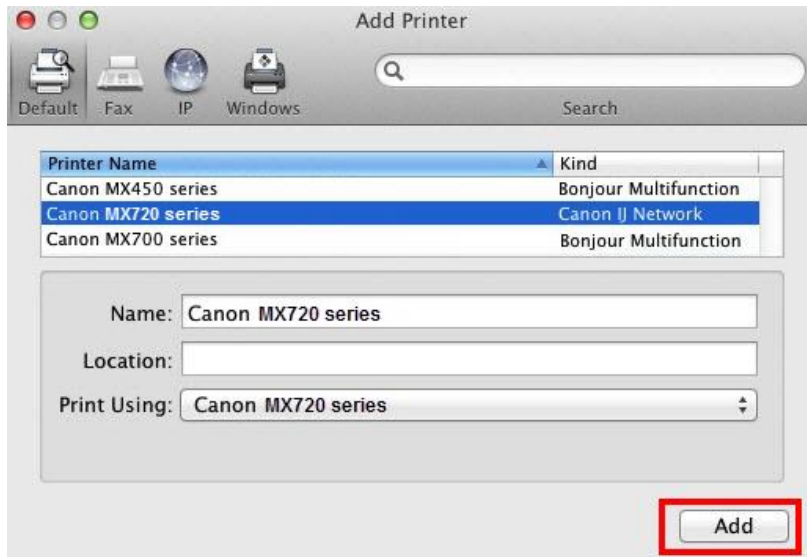
## Add the Printer

1. Click **Add Printer** on the Add Printer Screen



# Installing the Drivers

2. Select **Canon MX720 series** with **Canon IJ Network** listed in the **Kind** column\*. Click **Add**.



## REFERENCE

If the machine is not detected, make sure of the following:

- The machine is turned on.
- The firewall function of any security software is turned off.
- The computer is connected to the access point.

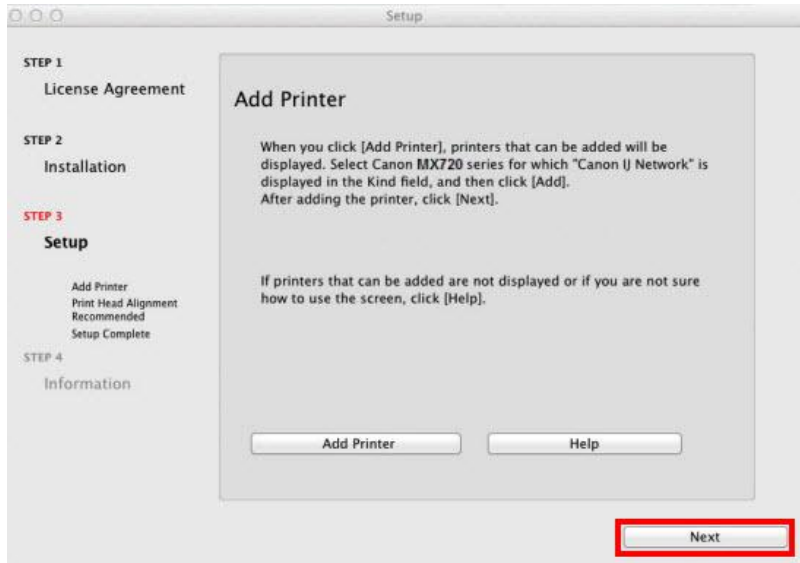
## \*CAUTION

If you will be installing the Canon printer driver on Mac OS X and using the printer through a network connection, you can select [**Bonjour**] or [**Canon IJ Network**] in the [**Add Printer**] dialog.

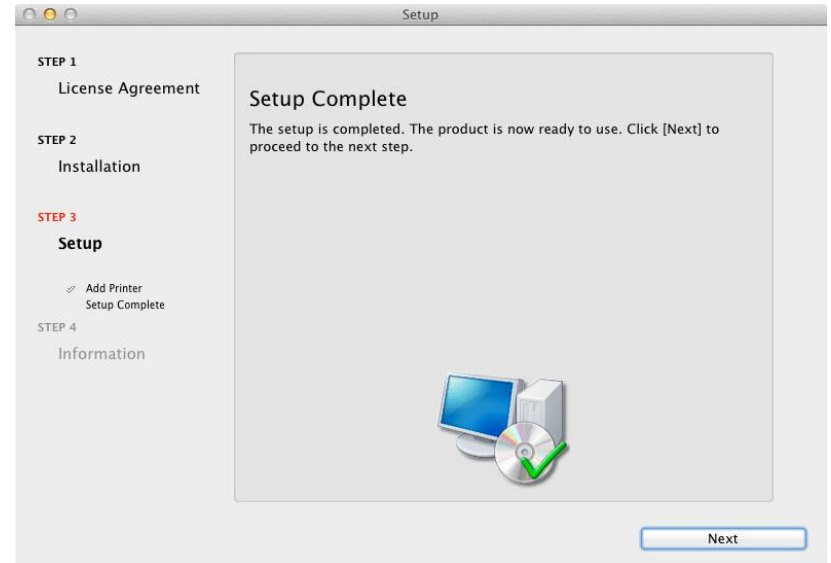
If [**Bonjour**] is selected, remaining ink level messages may differ from those indicated by [**Canon IJ Network**]. Canon recommends you to use [**Canon IJ Network**] for printing.

# Installing the Drivers

4. Click **Next**.



5. Click **Next**.



Setup is complete. Click **Next** to finish the remaining information section.