

Installing Your Multifunction to Additional Computers on Your Network

PIXMA MP499

Mac OS

Installing Your Multifunction to Additional Computers on Your Network

PIXMA MP499

Mac OS

Preparing to Connect My Multifunction To My Network	3
Network Requirements	3
Notes on Wireless Connection	4
Using the Machine from Additional Computers	5
Registering the Printer & Scanner	10

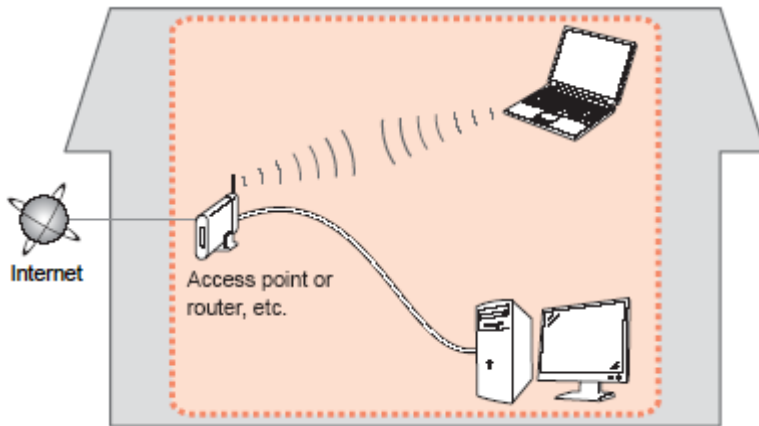
Preparing to Connect My Multifunction To My Network

[<< Previous](#)

[Next >>](#)

Network Requirements

Before connecting the machine to the network, make sure that configuration of the computer and access point or router is complete, and that the computer is connected to the network.



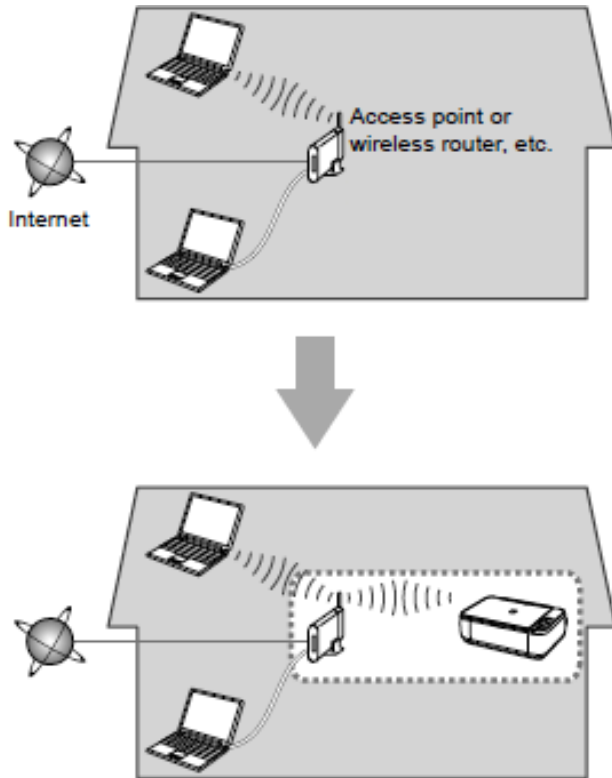
Wireless Connection

Before connecting the machine to the network, the computer needs to be connected to the network. Make sure that configuration of the computer and access point or router is complete.

Preparing to Connect My Multifunction To My Network

[<< Previous](#)

[Next >>](#)



An "Ad-hoc connection," which establishes a direct connection to the computer over a wireless connection without using an access point, is not supported.

Notes on Network Connection

- The configuration, router functions, setup procedures and security settings of the network device vary depending on your system environment. For details, refer to your device's instruction manual or contact its manufacturer.
- In an office setup, consult your network administrator
- If you connect to a network that is not protected with security measures, there is a risk of disclosing data such as your personal information to a third party.
- If an error message appears or if you have trouble with the network connection, refer to the printed manual: Network Setup Troubleshooting.
- Place the machine and computer on the same network segment.

Software Installation

If the machine is already connected to a wireless connection, it can be used from additional computers on the same network.

To use from additional computers

IMPORTANT

- Log on as the administrator (or a member of the Administrators group).
- Quit all running applications before installation.
- If the firewall function of your security software is turned on, a warning message may appear that Canon software is attempting to access the network. If such a warning message appears, set the security software to always allow access.

Step One

Turn on the computer, then insert the Setup **CD-ROM** into the CD-ROM drive. If you are using Windows, the setup program starts automatically.



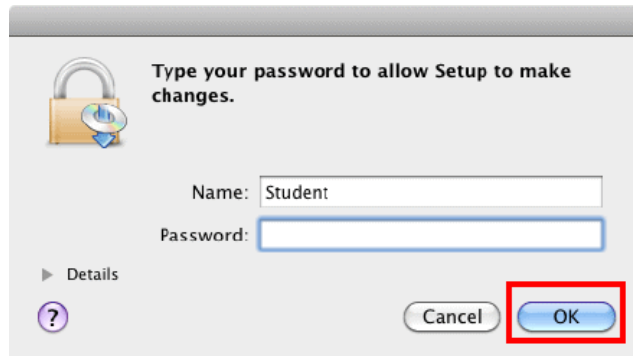
Step Two

Double-click the **Setup** icon of the CD-ROM folder to proceed to the following screen.




Step Three

Enter your administrator name and password. Click **OK**.



If the CD-ROM folder does not open automatically, double-click the CD-ROM icon on the desktop.



If you do not know your administrator name or password, click Help , then follow the on-screen instructions.

Step Four

Click **Easy Install**. Click **Install**.

The drivers, application software, and on-screen manuals are installed.

Note: If you want to select particular items to install, click Custom Install.

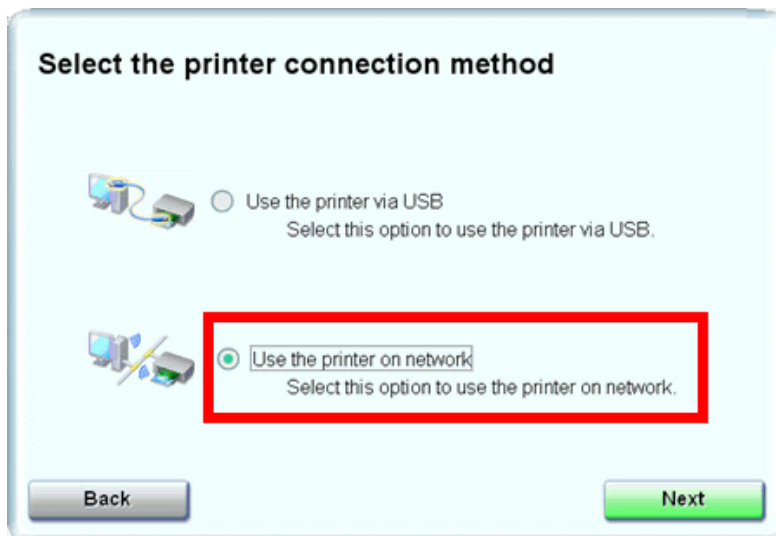


Note:

If you want to select particular items to install, click **Custom Install**. For most users, Easy Install is recommended. When using Custom Install, MP Drivers and IJ Network Tool must be selected in order for the printer to function. In addition it is highly recommended to install MP Navigator EX.

Step Five

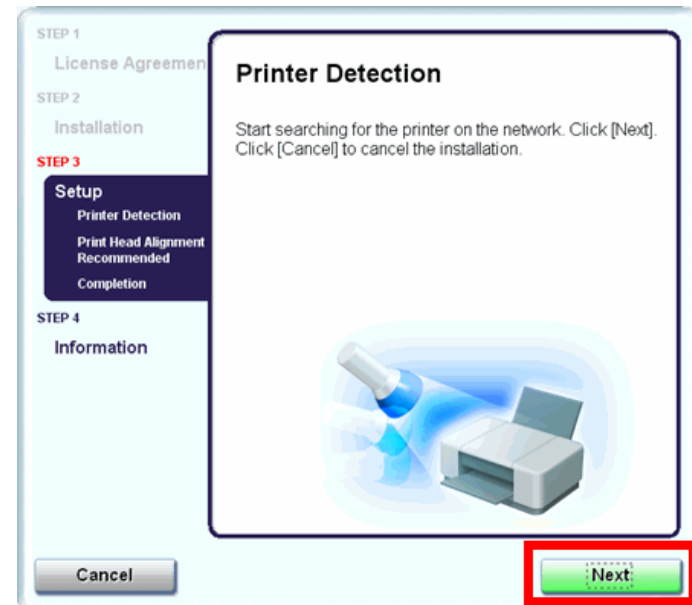
Select **Use the printer on network**, then click **Next**.



Follow any on-screen instructions to proceed with the software installation.

Step Six

When the Printer Detection screen appears, click **Next**.



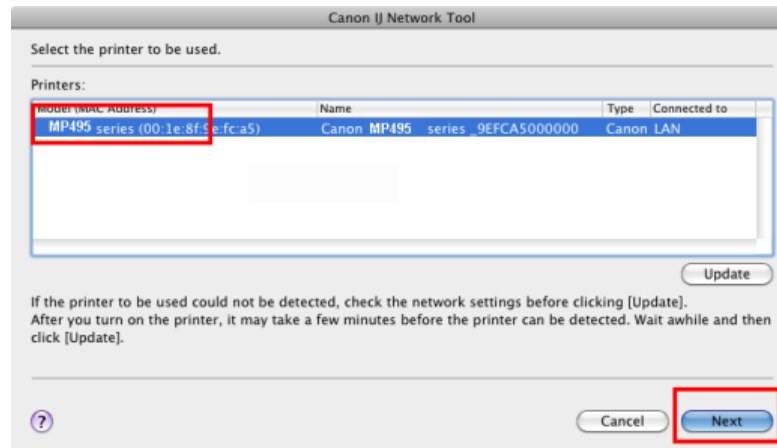
IMPORTANT

If the Printer Connection screen appears instead of the screen above, the connection method is not correctly selected in 5.

Follow on-screen instructions and proceed with the installation. Click Exit on the installation complete screen, then start again from 2 and be sure to select Use the printer on network in 5.

Step Seven

On the **Canon IJ Network Tool** screen, select **MP499 series** in Printers, then click **Next**.



Note:

The alphanumeric characters after **Canon MP499 series** is the machine's Bonjour service name or MAC address.

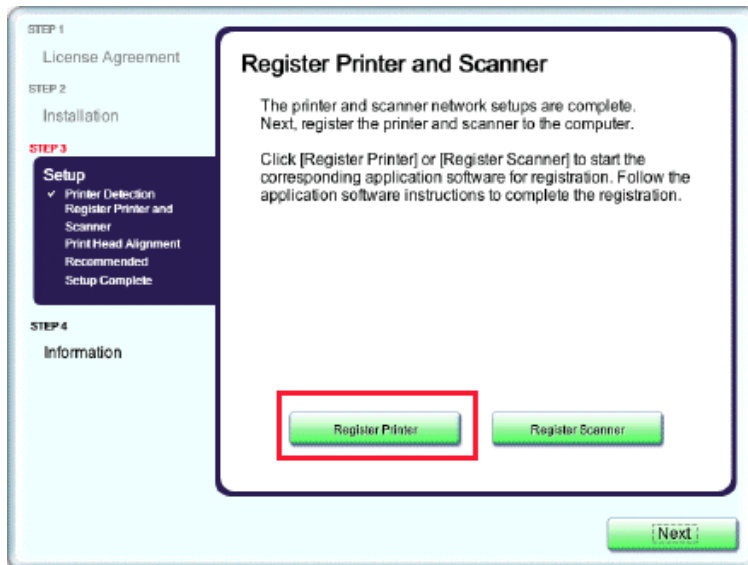
If the machine is not detected, refer to the printed manual: *Network Setup Troubleshooting*. Make sure there is no problem, then click **Update**.

Registering the Printer & Scanner

This section describes how to register the machine on a Macintosh computer.

Step One

When the **Register Printer and Scanner** screen appears, click **Register Printer**.



Proceed to the section that relates to your operating system for further installation instructions

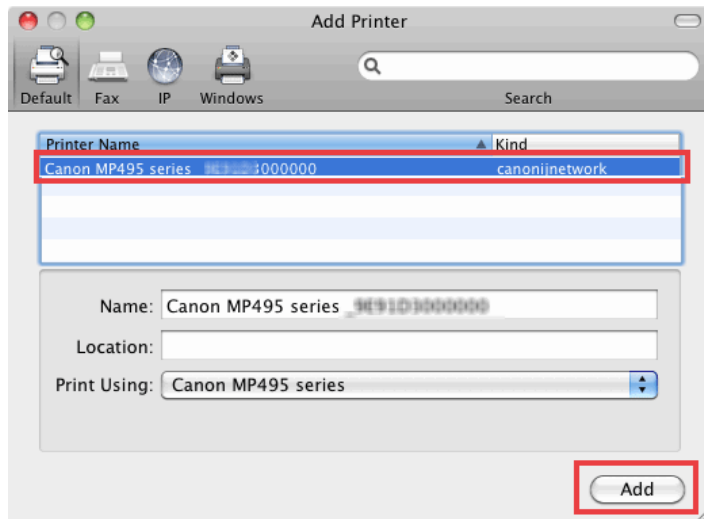
Mac OS X v. 10.5.x / 10.6.x: Go to Step **2-A**

Mac OS X v. 10.4.11: Go to Step **2-B**

Step Two

2-A

1. Select **Canon MP499 series canonijnetwork** and click **Add**. Go to Step Three.



*It may take a minute or two before the printer appears in the list

Step Two

2-B

1. When the **Printer List** window appears, click **Add**.



Note:

When the You have no printers available. screen appears, click **Add**.

Step Two

2-B

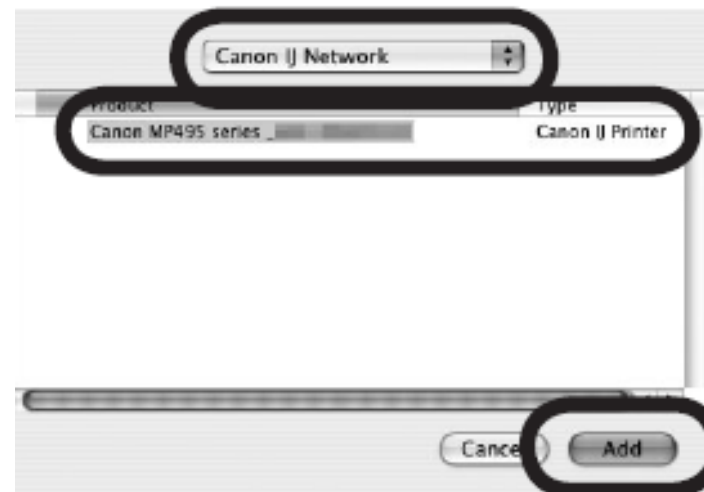
2. Click **More Printers** in the **Printer Browser** window.



Step Two

2-B

3. Select **Canon IJ Network** in the pop-up menu, select **Canon MP499 series** in the list of printers, then click **Add**.



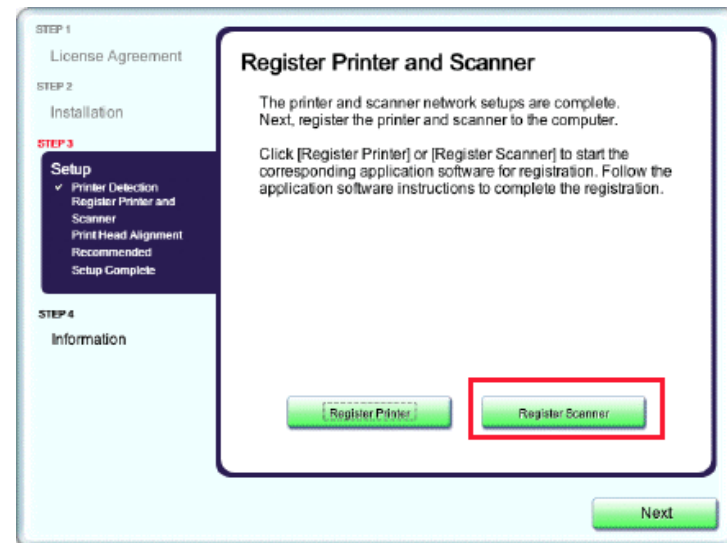
Step Two

2-B

4. Make sure that Canon MP499 series is added to the list of printers. Go to Step Three.

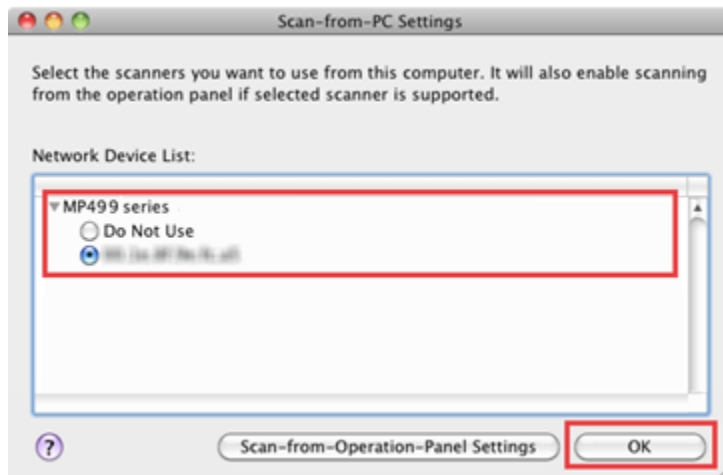
Step Three

When the **Register Printer and Scanner** screen appears, click **Register Scanner**.



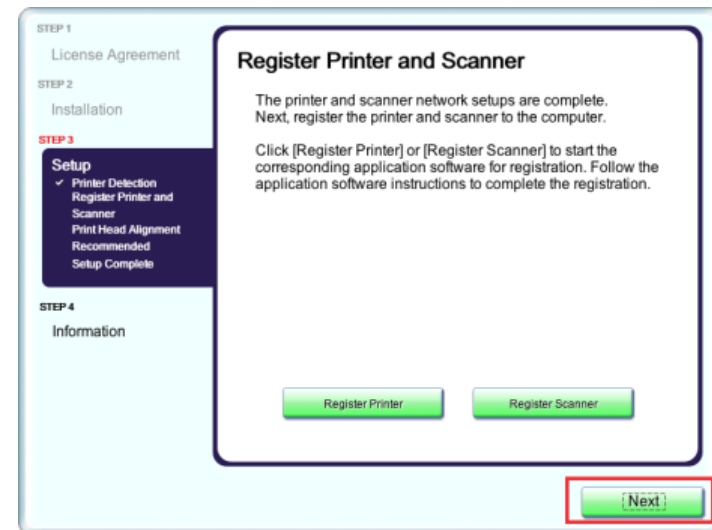
Step Four

Select **MP499 series** on the Scan-from-Operation-Panel Settings screen, then click **OK**.



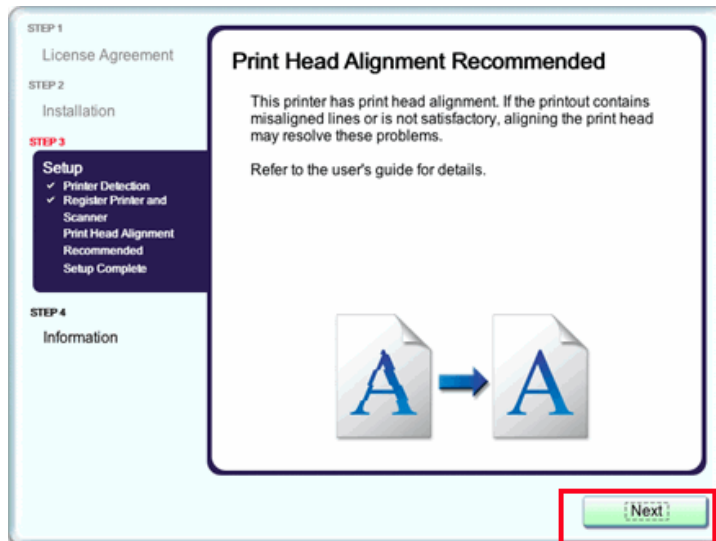
Step Five

Click **Next** on the **Register Printer and Scanner** screen.



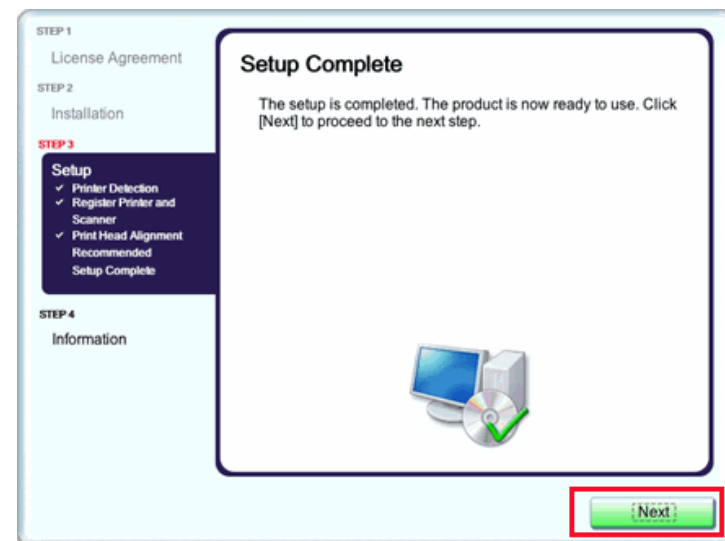
Step Six

Click **Next** on the **Print Head Alignment Recommended** screen.



Step Seven

Click **Next** on the **Register Printer and Scanner** screen.



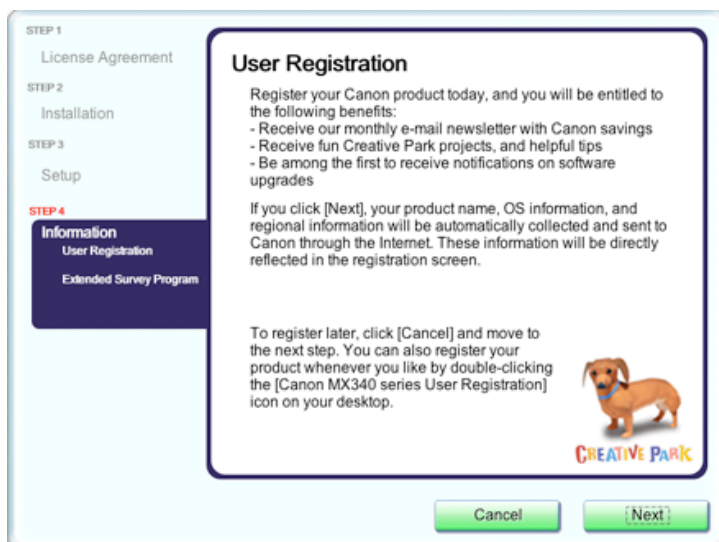
Registering the Printer & Scanner

[<< Previous](#)

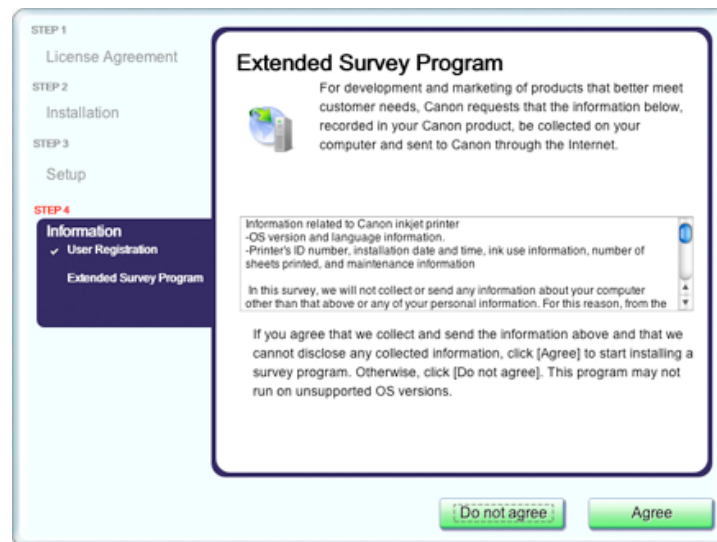
[Next >>](#)

Step Eight

If the **User Registration** screen appears, read the information and click **Next** or **Cancel**.



If the **Extended Survey Program** screen appears: If you can agree to Extended Survey Program, click **Agree**. If you click **Do not agree**, the Extended Survey Program will not be installed. (This has no effect on the machine's functionality.).



Step Nine

Click **Exit**. Setup is complete



*It is necessary to restart the computer before scanning using the Operation Panel on the machine for the first time.