

# Installing Your Multifunction to Additional Computers on Your Network

PIXMA MP499

Windows OS

# Installing Your Multifunction to Additional Computers on Your Network

PIXMA MP499  
Windows OS

<b>Preparing to Connect My Multifunction To My Network</b>	<b>3</b>
Network Requirements	3
Notes on Wireless Connection	4
<b>Using the Machine from Additional Computers</b>	<b>5</b>
<b>Registering the Printer &amp; Scanner</b>	<b>10</b>

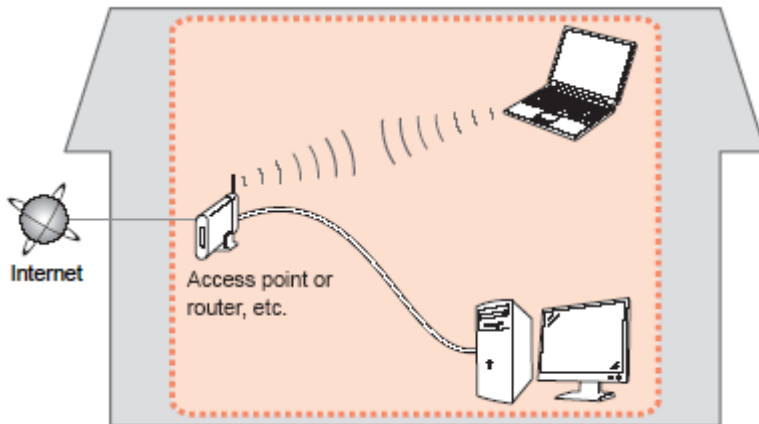
# Preparing to Connect My Multifunction To My Network

[<< Previous](#)

[Next >>](#)

## Network Requirements

Before connecting the machine to the network, make sure that configuration of the computer and access point or router is complete, and that the computer is connected to the network.



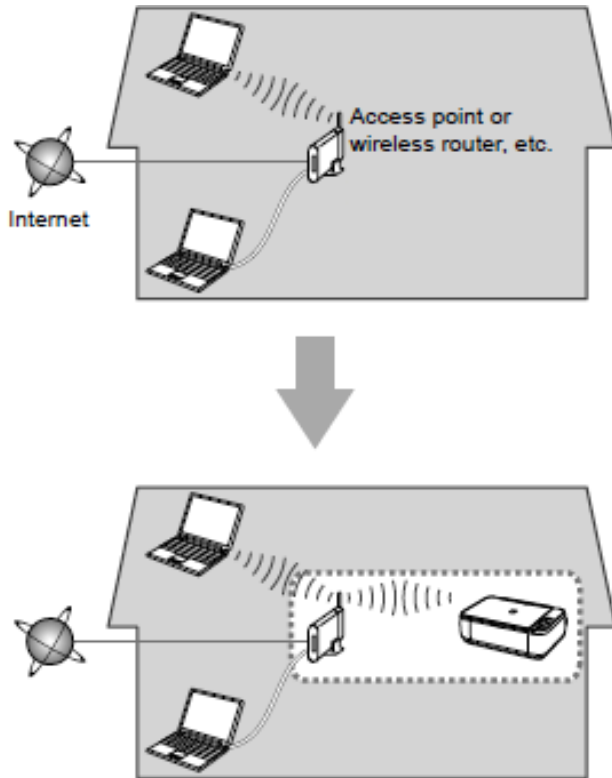
## Wireless Connection

Before connecting the machine to the network, the computer needs to be connected to the network. Make sure that configuration of the computer and access point or router is complete.

# Preparing to Connect My Multifunction To My Network

[<< Previous](#)

[Next >>](#)



An "Ad-hoc connection," which establishes a direct connection to the computer over a wireless connection without using an access point, is not supported.

## Notes on Network Connection

- The configuration, router functions, setup procedures and security settings of the network device vary depending on your system environment. For details, refer to your device's instruction manual or contact its manufacturer.
- In an office setup, consult your network administrator
- If you connect to a network that is not protected with security measures, there is a risk of disclosing data such as your personal information to a third party.
- If an error message appears or if you have trouble with the network connection, refer to the printed manual: Network Setup Troubleshooting.
- Place the machine and computer on the same network segment.

## Software Installation

If the machine is already connected to a wireless connection, it can be used from additional computers on the same network.

To use from additional computers

### **IMPORTANT**

- Log on as the administrator (or a member of the Administrators group).
- Quit all running applications before installation.
- If the firewall function of your security software is turned on, a warning message may appear that Canon software is attempting to access the network. If such a warning message appears, set the security software to always allow access.

## Step One

Turn on the computer, then insert the Setup **CD-ROM** into the CD-ROM drive. If you are using Windows, the setup program starts automatically.



## Step Two

Click Run Msetup4.exe on the AutoPlay screen, then click **Yes or Continue** on the User Account Control dialog box.

If the User Account Control dialog box reappears in following steps, click **Yes or Continue**.

## *Step Three*

The drivers, application software, and on-screen manuals are installed.

**Note:**

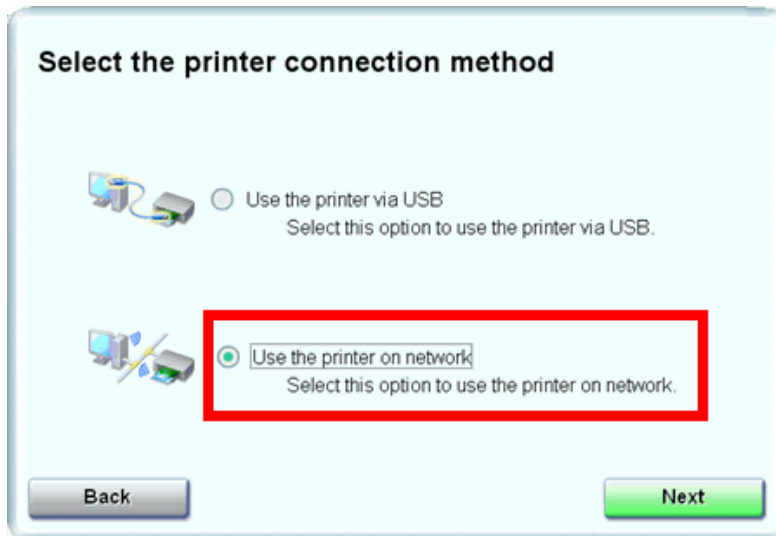
If you want to select particular items to install, click Custom Install.

## *Step Four*

Click **Install**.

## Step Five

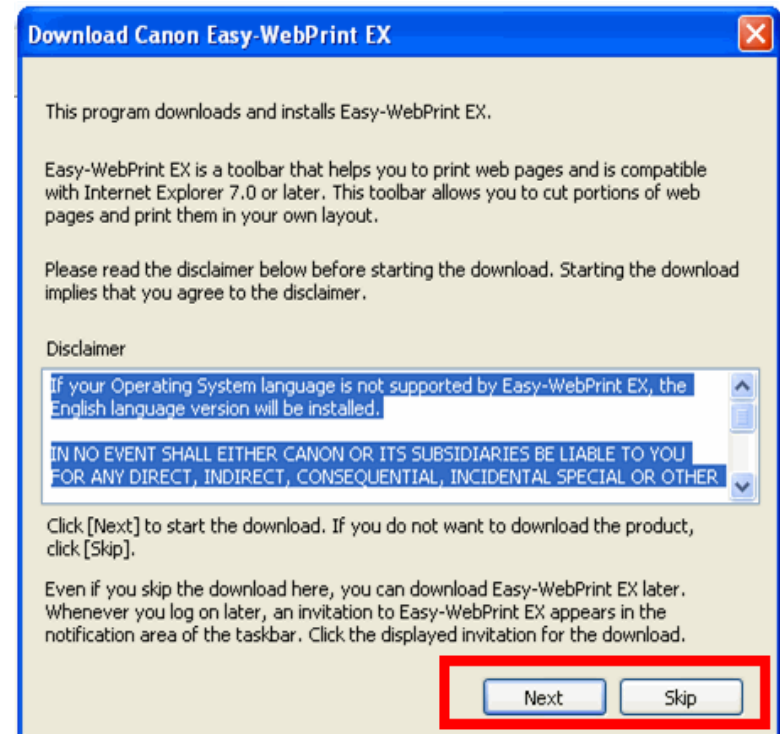
Select **Use the printer on network**, then click **Next**.



Follow any on-screen instructions to proceed with the software installation.

## Step Six

Easy-WebPrint EX is Web print software that is installed on the computer when installing the supplied software. Internet Explorer 7 or later is required to use this software. An Internet connection is required for installation.



Select **Next** or **Skip**. Selecting **Next** will download and install the Easy-WebPrint EX software.



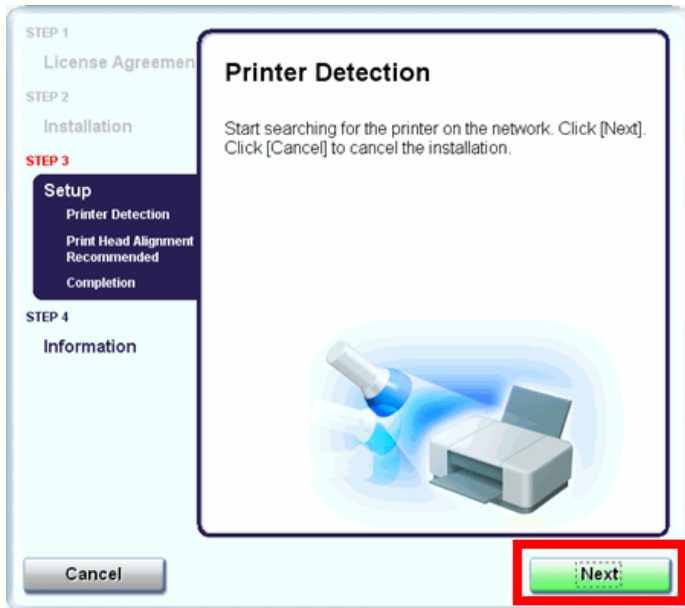
# Using the Machine from Additional Computers

[<< Previous](#)

[Next >>](#)

## Step Seven

When the Printer Detection screen appears, click **Next**.



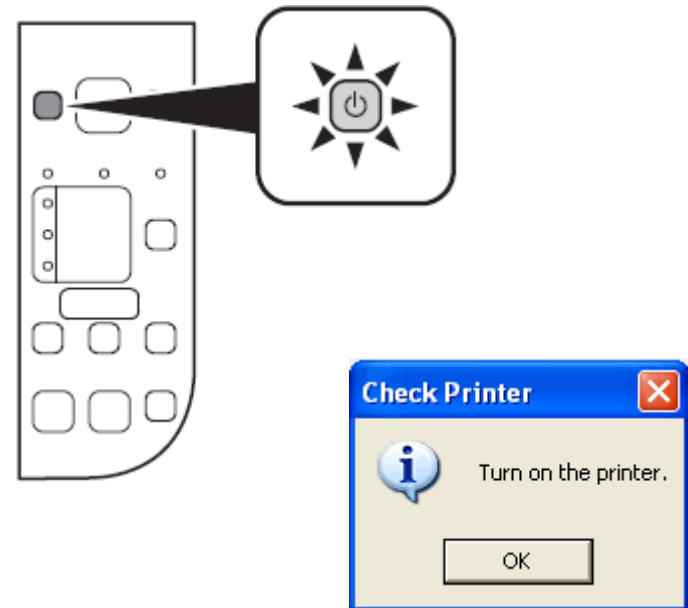
### IMPORTANT

If the Printer Connection screen appears instead of the screen above, the connection method is not correctly selected in 5.

Follow on-screen instructions and proceed with the installation. Click Exit on the installation complete screen, then start again from 2 and be sure to select Use the printer on network in 5.

## Step Eight

Make sure the machine is turned on, then click **OK**.



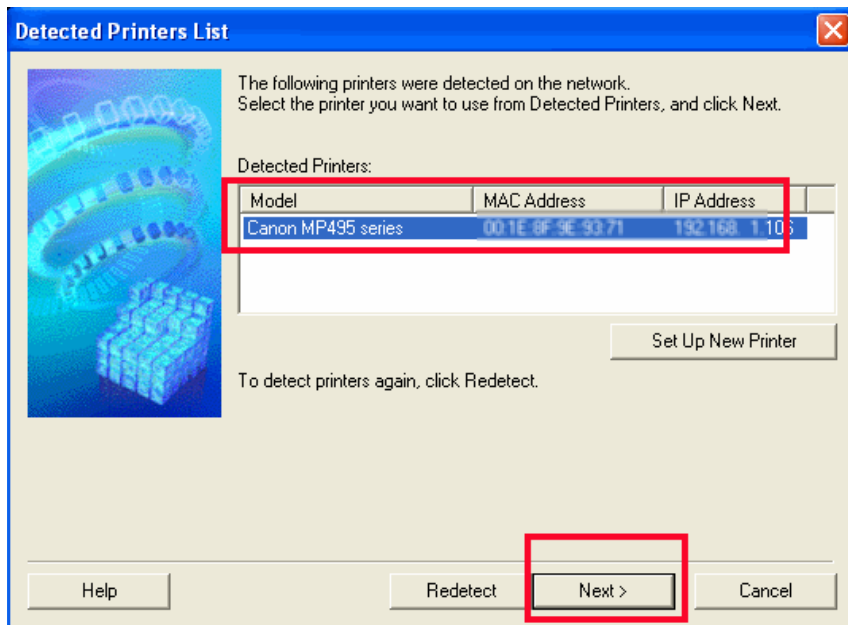
# Using the Machine from Additional Computers

[<< Previous](#)

[Next >>](#)

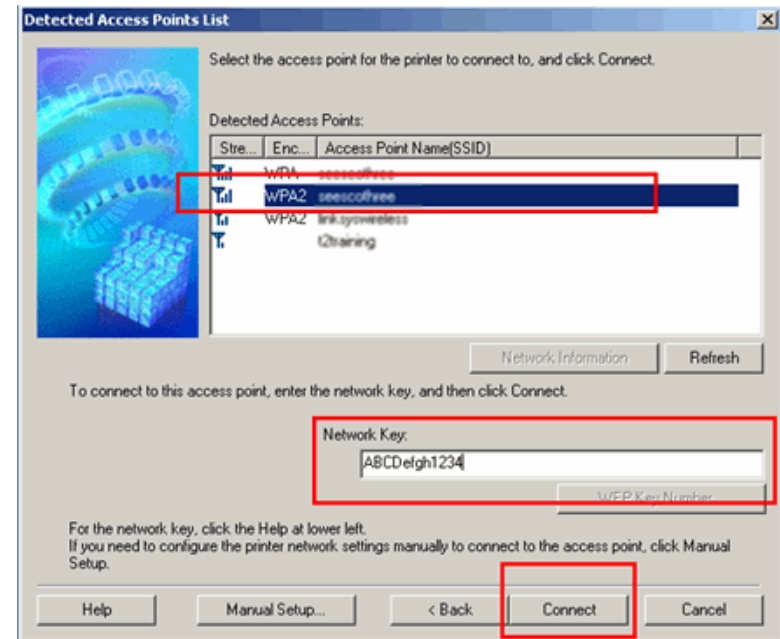
## Step Nine

When the **Detected Printers List** screen appears, click **Next**.



## Step Ten

If the **Detected Access Points List** screen appears, select the target access point name/network name (SSID), enter the network key and click **Connect**



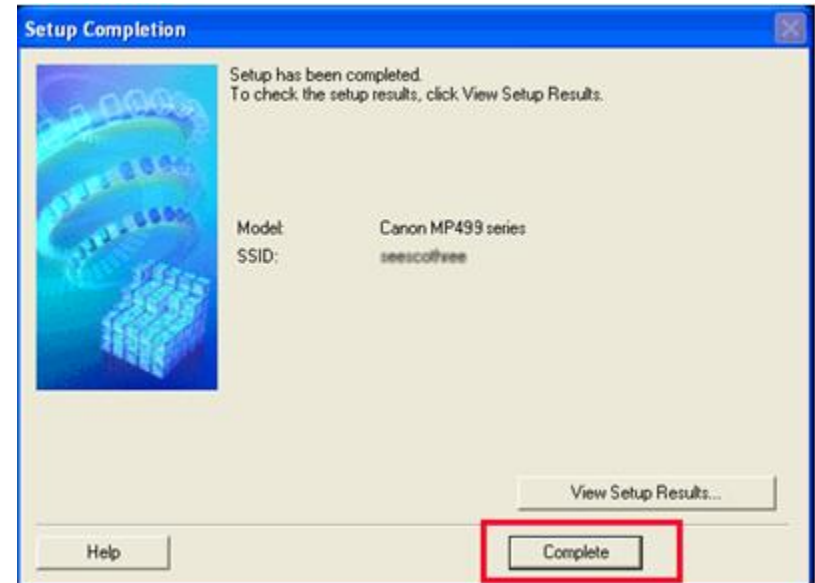
## Step Ten (Continued)

If the **Confirm Connection Access Point** screen appears, make sure that the target access point is displayed, then click **Yes**.



## Step Eleven

**Click Complete on the Setup Completion screen.**



## *Step Twelve*

### ***Setup is now complete***

Follow any on-screen instructions to proceed with the remaining software installation.