

Installing Your Multifunction to Additional Computers on Your Network

PIXMA MG8120

Windows OS

Installing Your Multifunction to Additional Computers on Your Network

PIXMA MG8120
Windows OS

Preparing to Connect My Multifunction To My Network	3
Installing The MG8120 Software	5

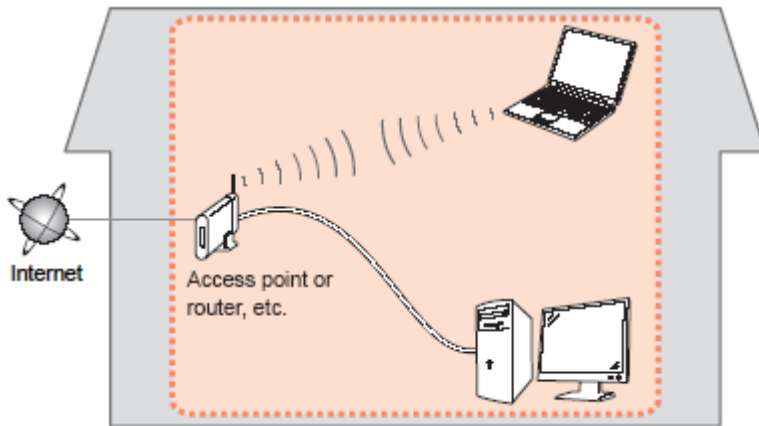
Preparing to Connect My Multifunction To My Network

[<< Previous](#)

[Next >>](#)

Network Requirements

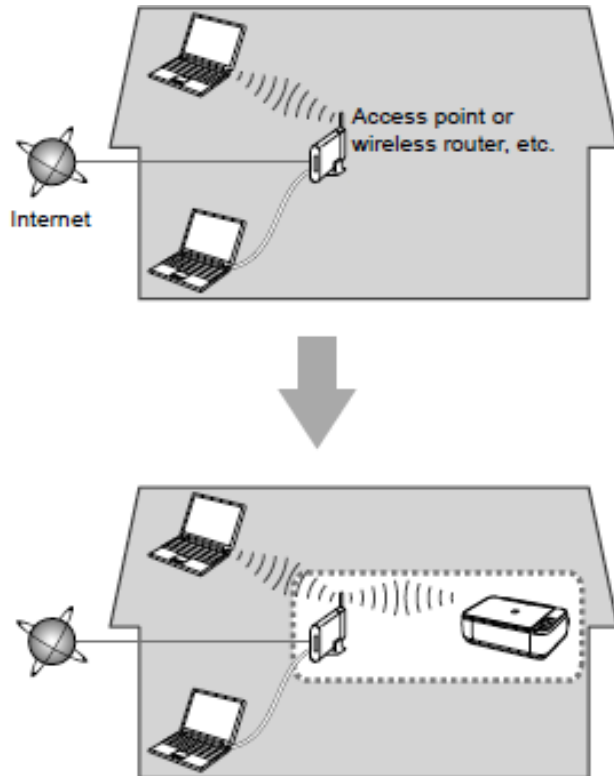
Before connecting the machine to the network, make sure that configuration of the computer and access point or router is complete, and that the computer is connected to the network.



Preparing to Connect My Multifunction To My Network

[<< Previous](#)

[Next >>](#)



An "Ad-hoc connection," which establishes a direct connection to the computer over a wireless connection without using an access point, is not supported.

Be sure to prepare an access point.

Notes on Network Connection

- The configuration, router functions, setup procedures and security settings of the network device vary depending on your system environment. For details, refer to your device's instruction manual or contact its manufacturer.
- In an office setup, consult your network administrator
- If you connect to a network that is not protected with security measures, there is a risk of disclosing data such as your personal information to a third party.
- If an error message appears or if you have trouble with the network connection, refer to the printed manual: Network Setup Troubleshooting.
- Place the machine and computer on the same network segment.

If the machine is already connected to a wireless connection, it can be used from additional computers on the same network.

Before we begin:

- Log on as the administrator (or a member of the Administrators group).
- Quit all running applications before installation.
- If the firewall function of your security software is turned on, a warning message may appear that Canon software is attempting to access the network. If such a warning message appears, set the security software to always allow access.

Step 1

Turn on the computer, then insert the Setup CD-ROM into the CD-ROM drive. If you are using Windows, the setup program starts automatically.



Note:

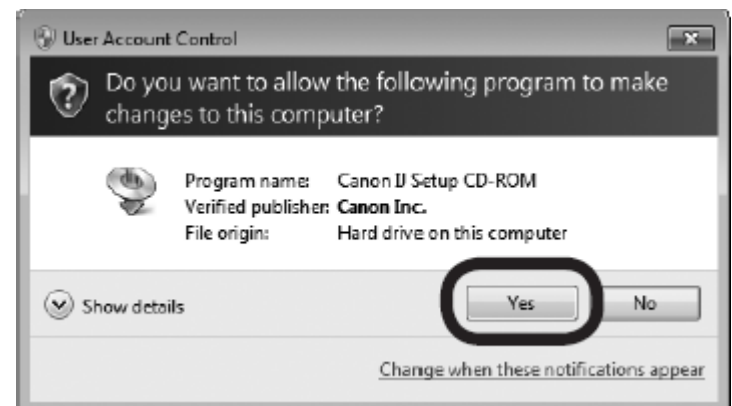
If the program does not start automatically, double-click the CD-ROM icon in Computer or My Computer. When the CD-ROM contents appear, double-click MSETUP4.EXE.

Step 2

Windows 7/Windows Vista.
For Windows XP, skip to Step 3.

Click Run Msetup4.exe on the AutoPlay screen, then click **Yes or Continue** on the User Account Control dialog box.

If the User Account Control dialog box reappears in following steps, click **Yes or Continue**.



Step 3

Click **Easy Install**

The drivers, application software, and on-screen manuals are installed.

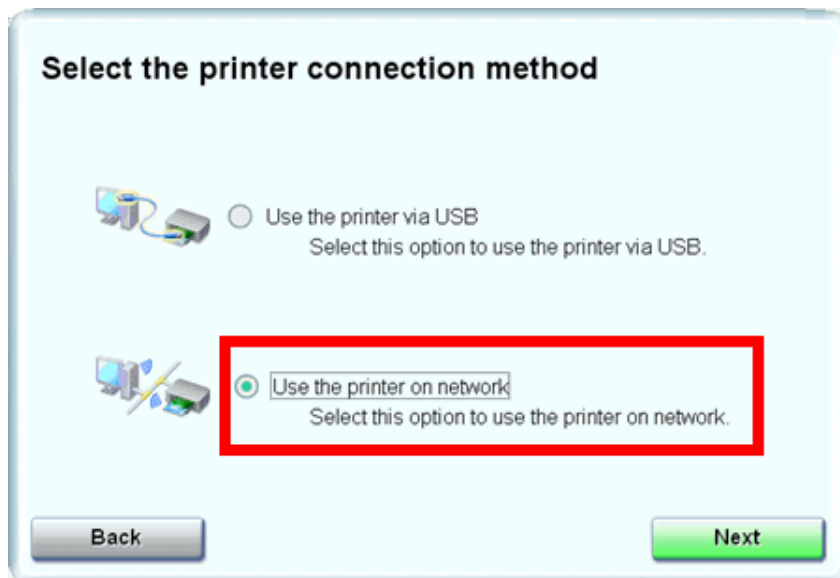
Note: If you want to select particular items to install, click **Custom Install**.

Step 4

Click **Install**

Step 5

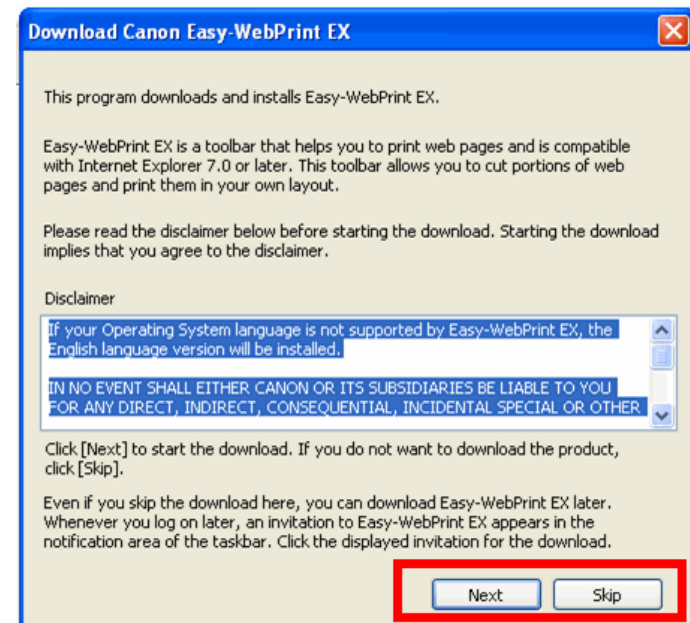
Select **Use the printer on network**, then click **Next**.



Step 6

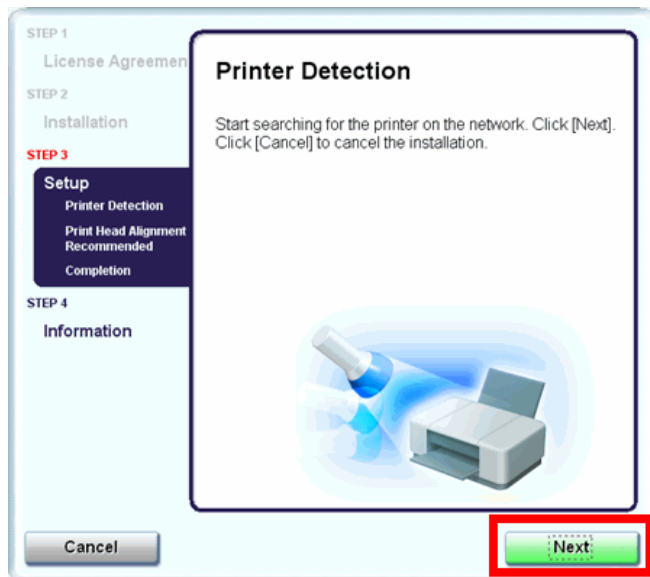
Select **Next** or **Skip**.

Selecting **Next** will download and install the Easy-WebPrint EX software. Easy-WebPrint EX is Web print software. Internet Explorer 7 or later is required to use this software. An Internet connection is required for installation.



Step 7

When the Printer Detection screen appears, click **Next**.



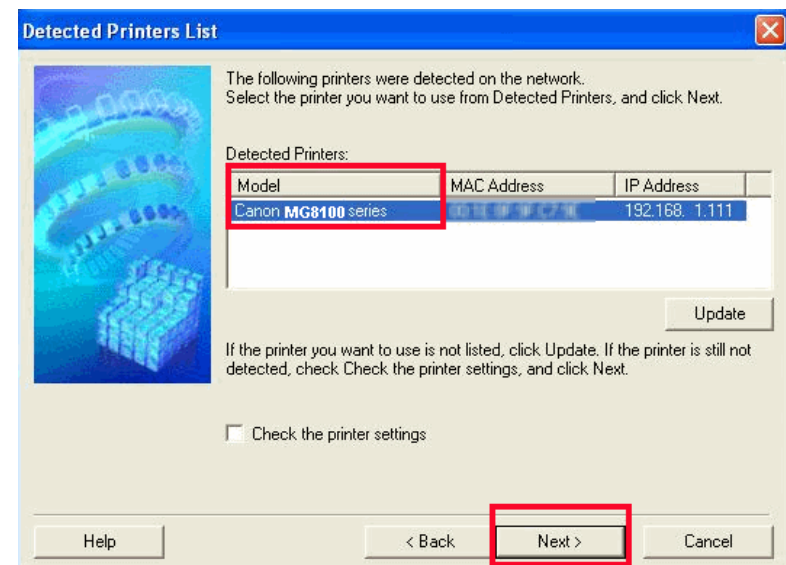
▶ IMPORTANT

IF THE PRINTER CONNECTION SCREEN APPEARS INSTEAD OF THE SCREEN ABOVE, THE CONNECTION METHOD IS NOT CORRECTLY SELECTED IN 5.

CLICK CANCEL AND START AGAIN FROM STEP 1, THEN BE SURE TO SELECT USE THE PRINTER ON NETWORK IN 5.

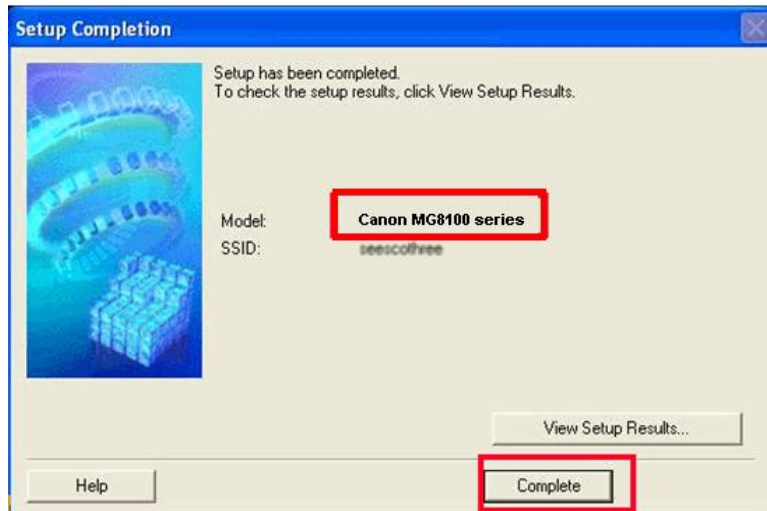
Step 8

When the **Detected Printers List** screen appears, select Canon MG8100 series, then click **Next**.



Step 9

Click Complete on the Setup Completion screen.



Wireless setup is now complete

Step 10

Follow any on-screen instructions to proceed with the remaining software installation.