



**Installing Your Multifunction to  
Additional Computers on Your Network  
PIXMA mg7120  
Mac OS**

# **Installing Your Multifunction to Additional Computers on Your Network**

## **PIXMA mg7120**

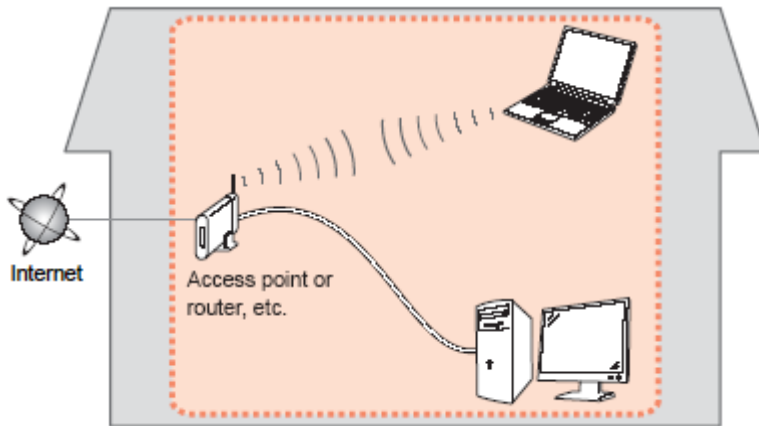
### **Mac OS**

<b>Preparing to Connect My Multifunction to My Network</b>	<b>3</b>
Network Requirements	3
Notes on Wireless Connection	4
<b>Installing the Drivers &amp; Software</b>	<b>5</b>

# Preparing to Connect My Multifunction To My Network

## Network Requirements

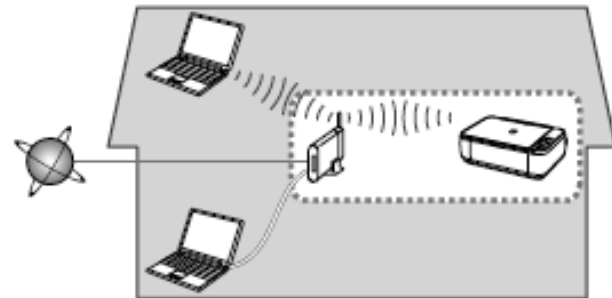
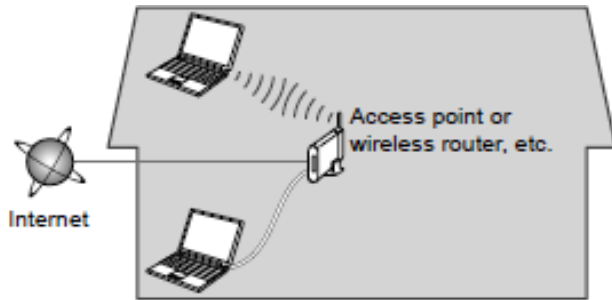
Before connecting the machine to the network, make sure that configuration of the computer and access point or router is complete, and that the computer is connected to the network.



## Wireless Connection

Before connecting the machine to the network, the computer needs to be connected to the network. Make sure that configuration of the computer and access point or router is complete.

# Preparing to Connect My Multifunction To My Network



An "Ad-hoc connection," which establishes a direct connection to the computer over a wireless connection without using an access point, is not supported.

## Notes on Network Connection

- The configuration, router functions, setup procedures and security settings of the network device vary depending on your system environment. For details, refer to your device's instruction manual or contact its manufacturer.
- In an office setup, consult your network administrator
- If you connect to a network that is not protected with security measures, there is a risk of disclosing data such as your personal information to a third party.
- Place the machine and computer on the same network segment.

# Installing the Drivers & Software

## Software Installation

To use the machine by connecting it to a computer, software including the drivers needs to be copied (installed) to the computer's hard disk. Installation time varies depending on the computer environment or the number of application software to be installed.

### **IMPORTANT**

- Log on as the administrator (or a member of the Administrators group).
- Quit all running applications before installation.
- Do not switch users during the installation process.
- Internet connection may be required during the installation. Connection fees may apply. Consult the internet service provider.
- If the firewall function of your security software is turned on, a warning message may appear that Canon software is attempting to access the network. If such a warning message appears, set the security software to always allow access.

# Installing the Drivers & Software

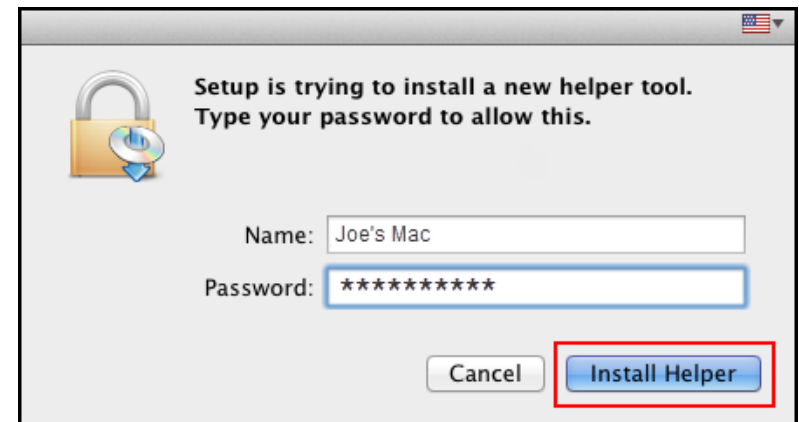
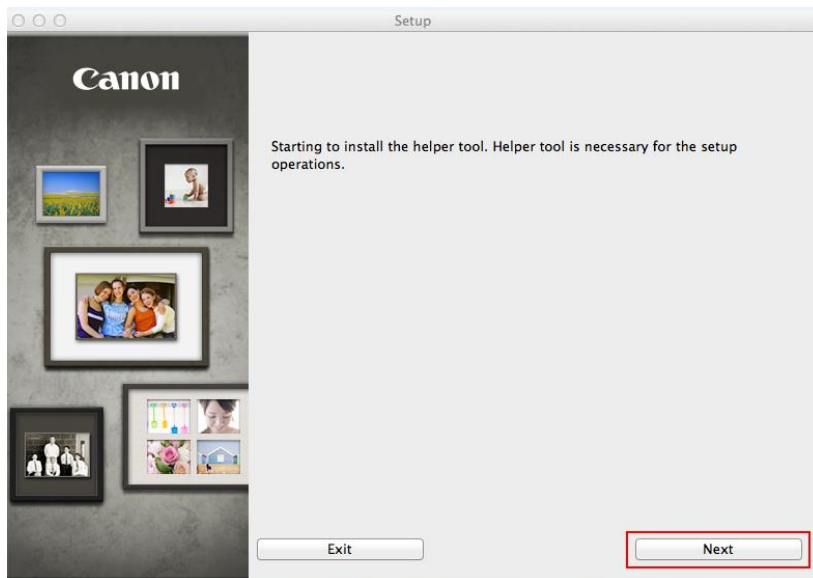
If your mg7120 has already been set up for on your wireless network , it is only necessary to install the software on the additional computer(s). The printer does not have to be reset and no additional settings need to be made.

To begin setup of your PIXMA mg7120 to additional computers on your wireless network, you must first download the software to your computer.

[Click here to download.](#)

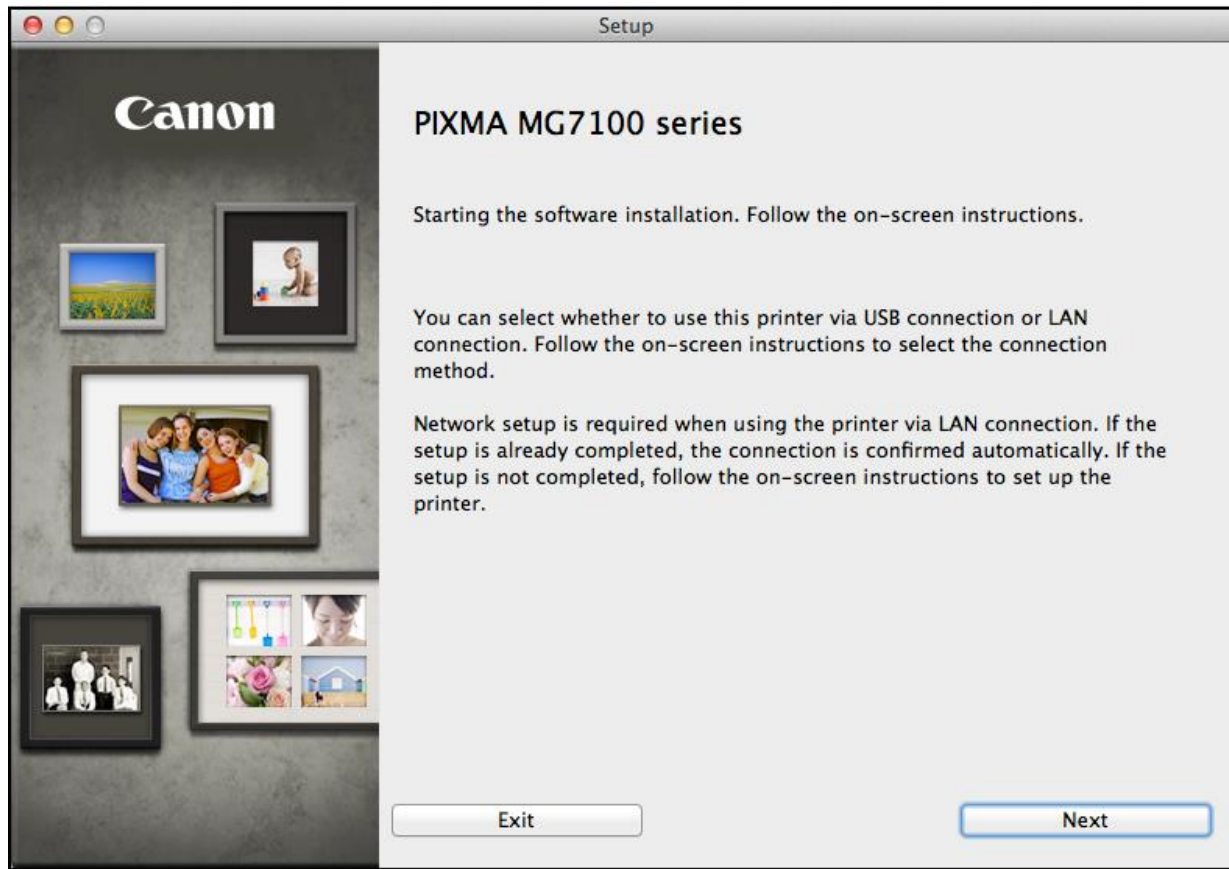
After the file, mac-mg7100-1\_0-mcd.dmg , has downloaded successfully, double-click it to start the install procedure.

Click **Next** on the first screen. If prompted, enter the Administrative Password to continue and click **Install Helper**.



# Installing the Drivers & Software

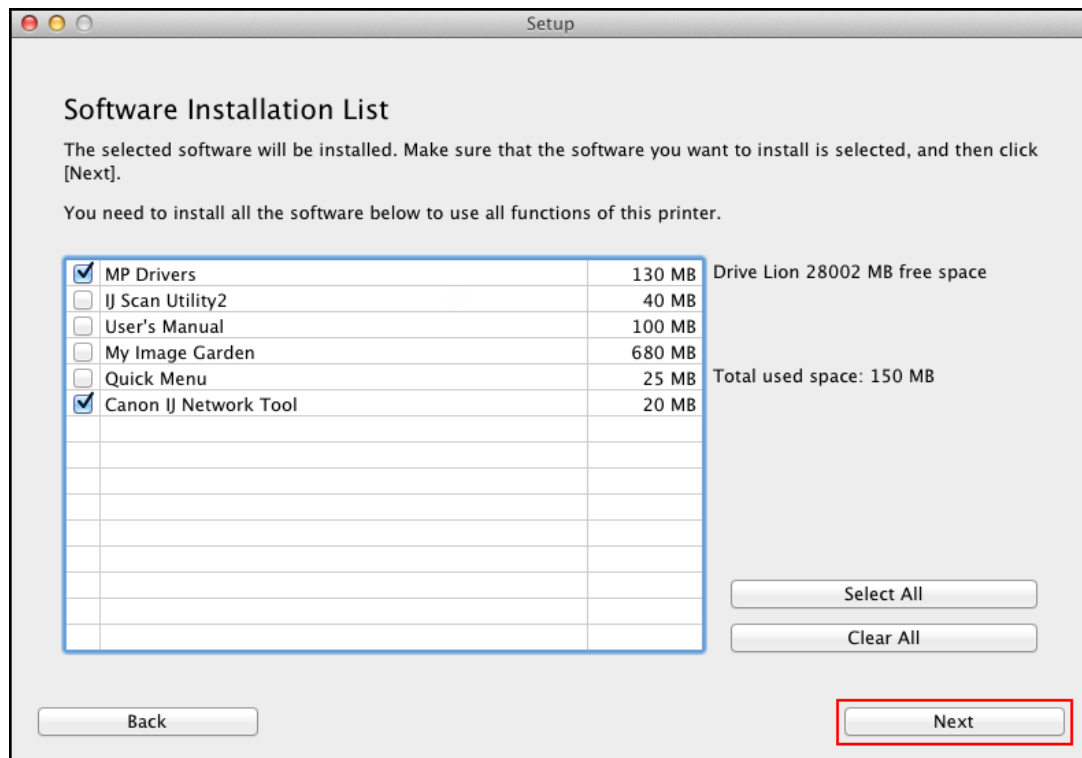
Click **Next** on the following screen.



# Installing the Drivers & Software

Continue following on-screen instructions. On the **Software Installation List**, select \*software to install and click **Next**.

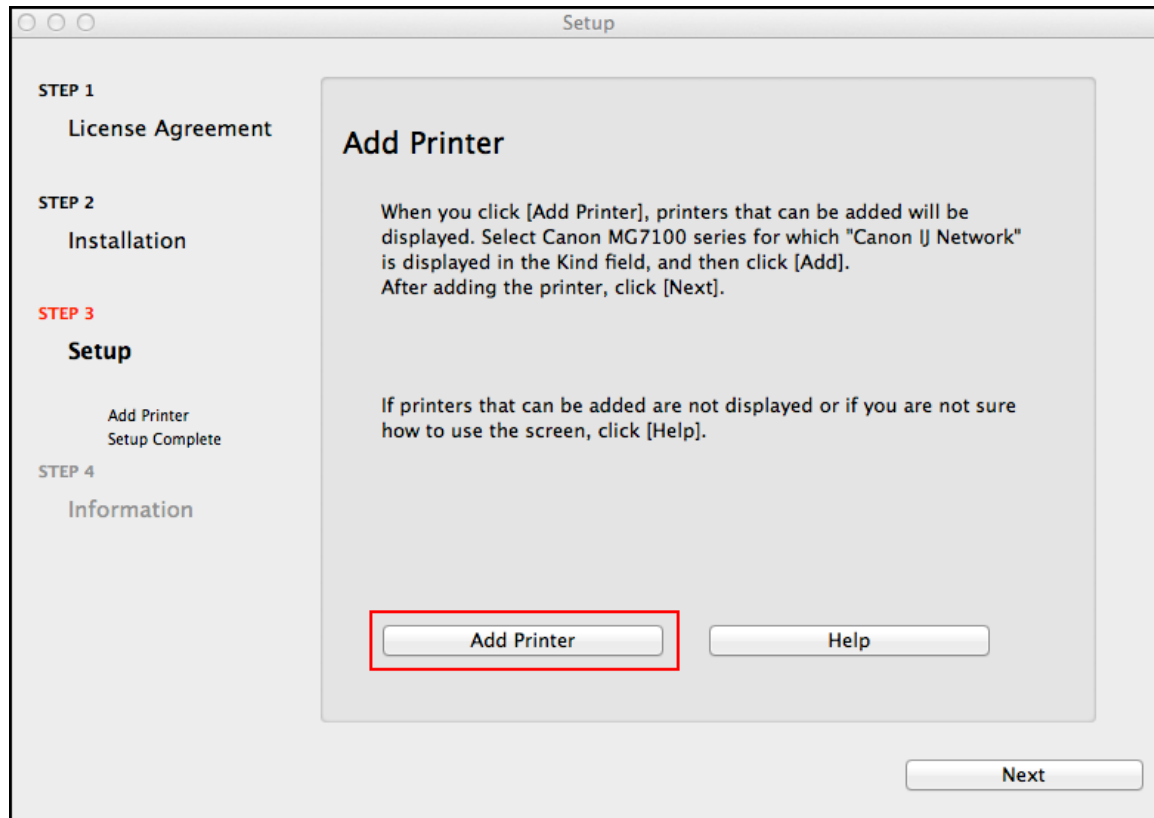
\***MP Drivers** and **Canon IJ Network Tool** are required and cannot be deselected. We recommend installing **My Image Garden** and **Quick Menu** to take full advantage of the printer's features.





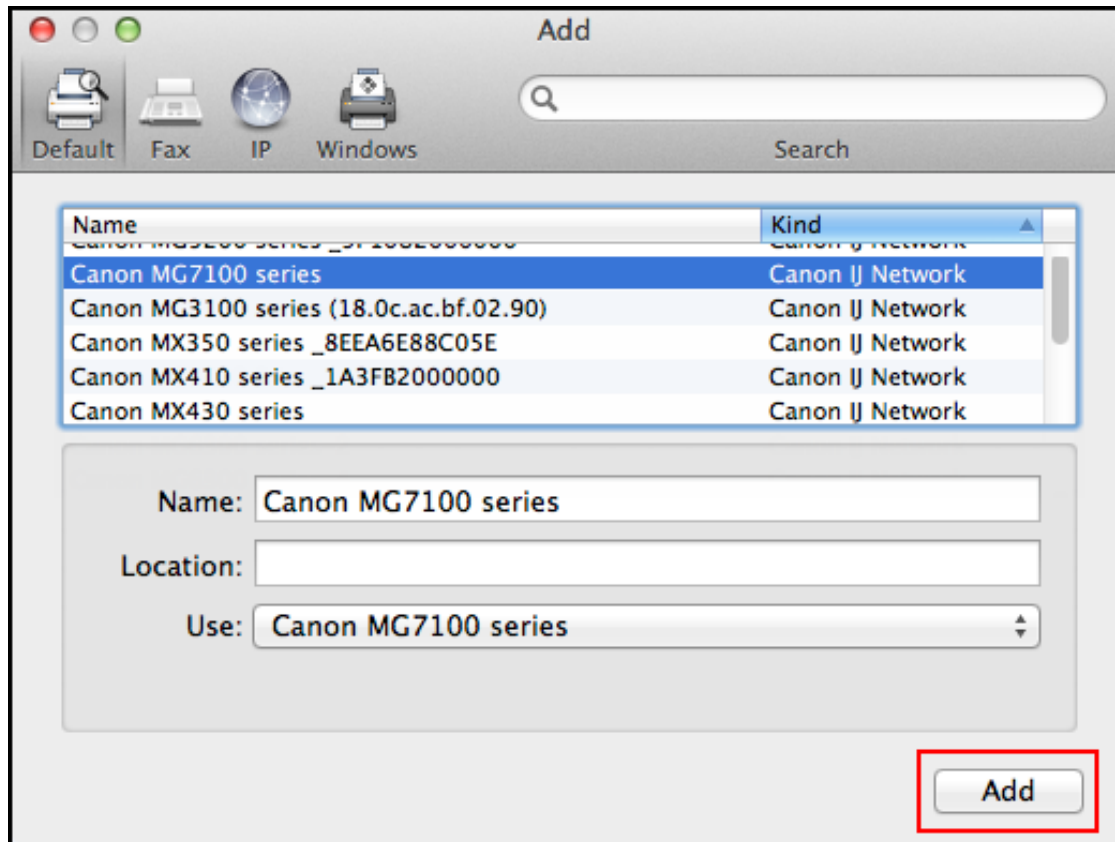
# Adding the Printer

Continue following the on-screen instructions.  
When the **Add Printer** screen appears, click **Add Printer**.



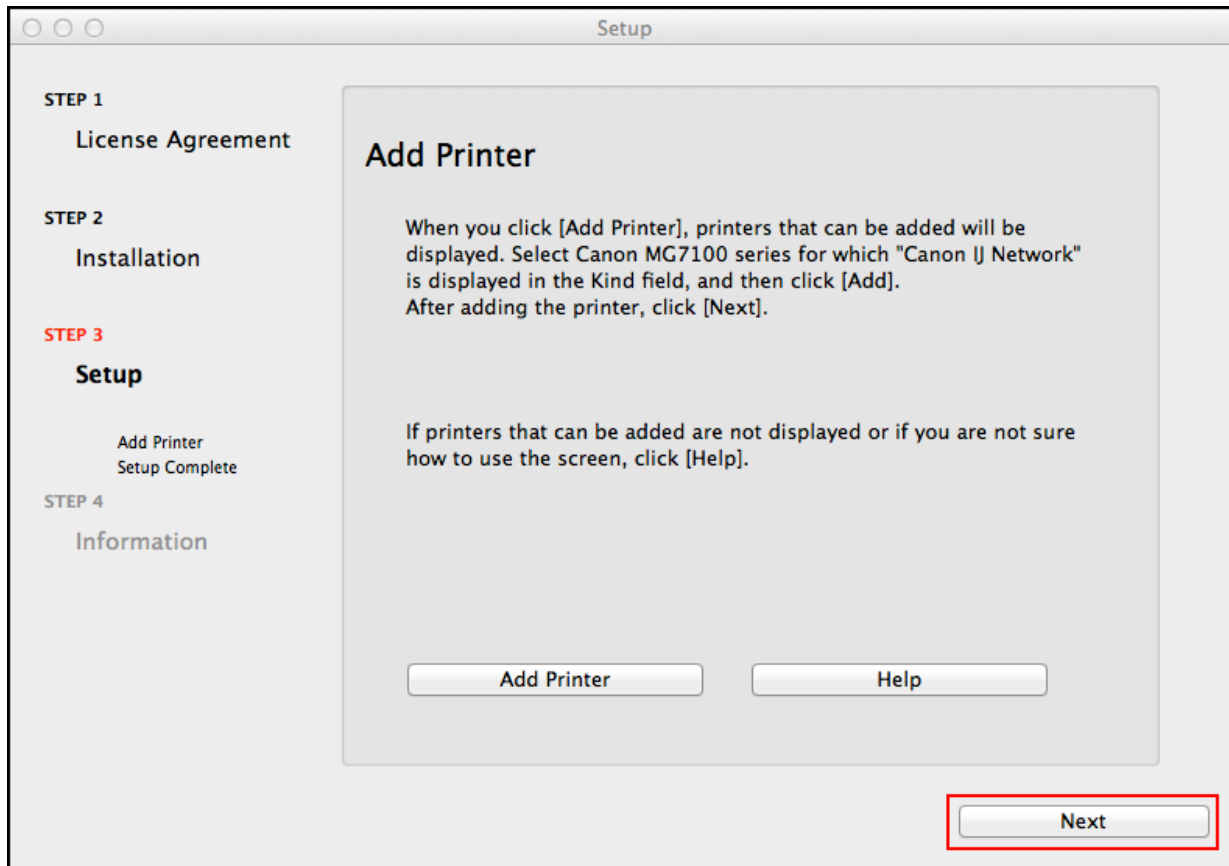
# Adding the Printer

Select the **Canon mg7100 series** with **Canon IJ Network** listed in the **Kind** column, then click **Add**.



# Adding the Printer

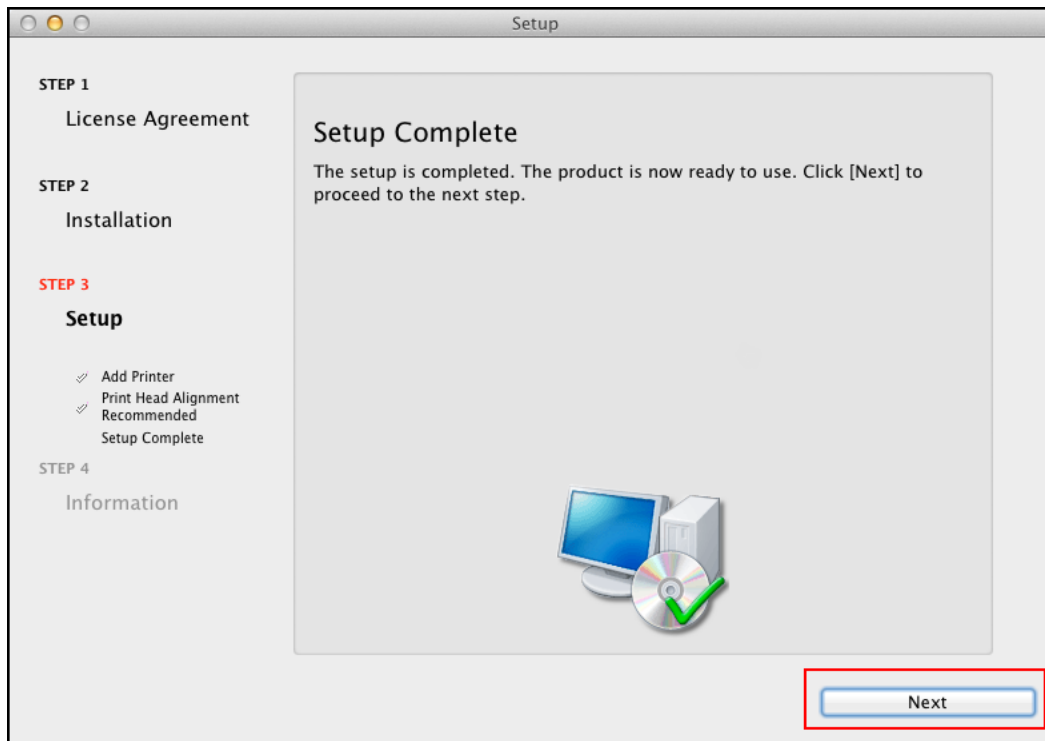
Click **Next** on the **Add Printer** screen



# Completing the Setup

Continue following on-screen instructions.

When the **Setup Complete** screen appears, click **Next**.



At this point, setup of the printer and network is complete. Continue to follow any remaining on-screen instructions to finish and exit the setup program.