

Installing Your Multifunction to Additional Computers on Your Network

PIXMA MG4220

Windows OS

Installing Your Multifunction to Additional Computers on Your Network

PIXMA MG4220
Windows OS

Preparing to Connect My Multifunction To My Network	3
Network Requirements	3
Notes on Wireless Connection	4
Using the Machine from Additional Computers	5

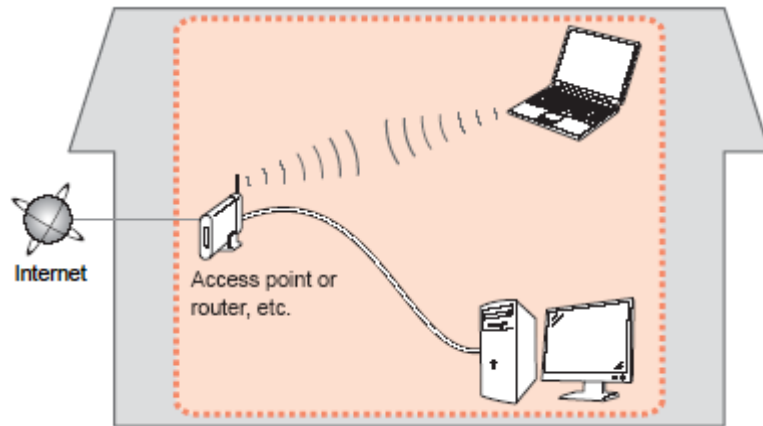
Preparing to Connect My Multifunction To My Network

[<< Previous](#)

[Next >>](#)

Network Requirements

Before connecting the machine to the network, make sure that configuration of the computer and access point or router is complete, and that the computer is connected to the network.



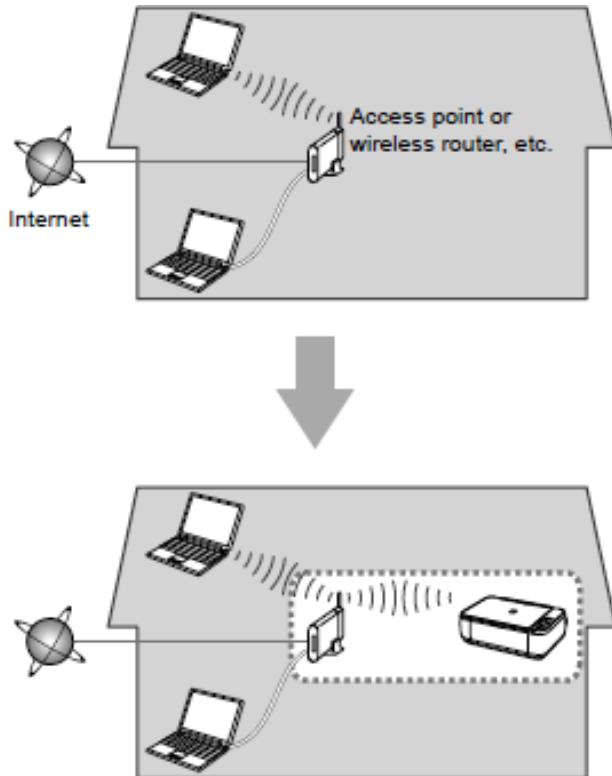
Wireless Connection

Before connecting the machine to the network, the computer needs to be connected to the network. Make sure that configuration of the computer and access point or router is complete.

Preparing to Connect My Multifunction To My Network

[<< Previous](#)

[Next >>](#)



An "Ad-hoc connection," which establishes a direct connection to the computer over a wireless connection without using an access point, is not supported.

A router or access point is required for your printer to be used on a wireless network.

Notes on Network Connection

- The configuration, router functions, setup procedures and security settings of the network device vary depending on your system environment. For details, refer to your device's instruction manual or contact its manufacturer.
- In an office setup, consult your network administrator
- If you connect to a network that is not protected with security measures, there is a risk of disclosing data such as your personal information to a third party.
- Place the machine and computer on the same network segment.

Software Installation

If the machine is already connected to a wireless connection, it can be used from additional computers on the same network. Only the software needs to be installed. It is not necessary to make any changes or settings on the printer itself.

To use from additional computers

IMPORTANT

- Log on as the administrator (or a member of the Administrators group).
- Quit all running applications before installation.
- If the firewall function of your security software is turned on, a warning message may appear that Canon software is attempting to access the network. If such a warning message appears, set the security software to always allow access.

Installing the PIXMA MG4220 on Additional Computers

If your printer is already on your network, and you wish to use the printer from additional computers, you only need to install the printer software on the other computers. If the network setup has already been completed, the connection is confirmed automatically. No additional settings are required on the printer. A step-by-step walk through of the wireless setup is built in to the installation routine of the software that shipped with your PIXMA.

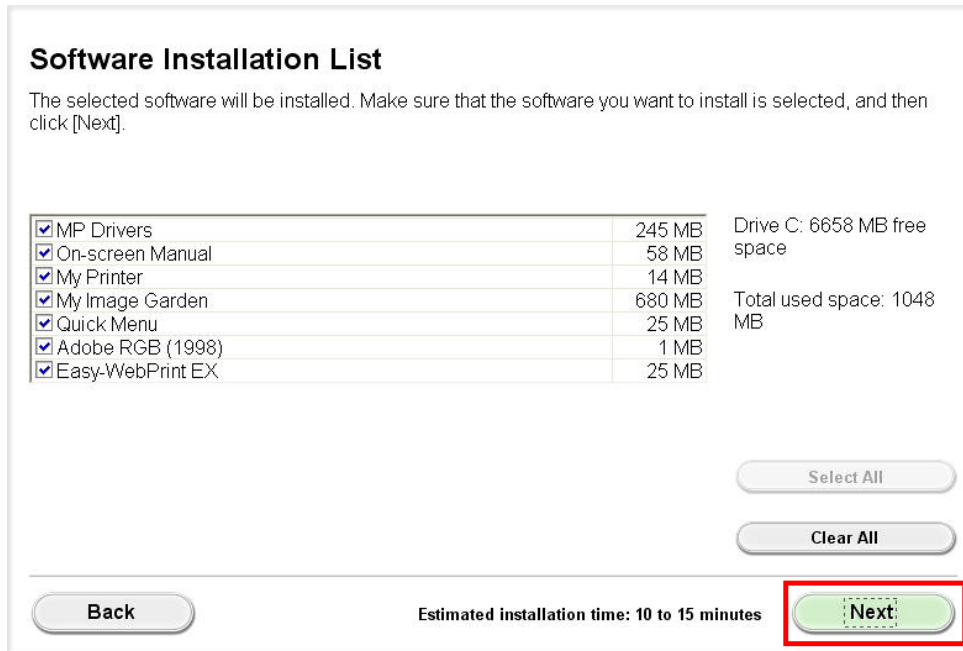
Simply **insert the Setup CD-ROM*** that came with your printer into your CD-ROM drive of each computer you wish to use with the printer and proceed through the easy to follow instructions.



*You can also use the setup file available for download on our web site. [Click here](#) for information.

Installing the Drivers

On the **Software Installation List** screen, select any additional software* you wish to install, then click **Next**. Follow any remaining on-screen instructions to finish and exit the setup program.



Software Installation List

The selected software will be installed. Make sure that the software you want to install is selected, and then click [Next].

<input checked="" type="checkbox"/>	MP Drivers	245 MB	Drive C: 6658 MB free space
<input checked="" type="checkbox"/>	On-screen Manual	58 MB	
<input checked="" type="checkbox"/>	My Printer	14 MB	Total used space: 1048 MB
<input checked="" type="checkbox"/>	My Image Garden	680 MB	
<input checked="" type="checkbox"/>	Quick Menu	25 MB	
<input checked="" type="checkbox"/>	Adobe RGB (1998)	1 MB	
<input checked="" type="checkbox"/>	Easy-WebPrint EX	25 MB	

Buttons: Back, Next, Select All, Clear All

Estimated installation time: 10 to 15 minutes

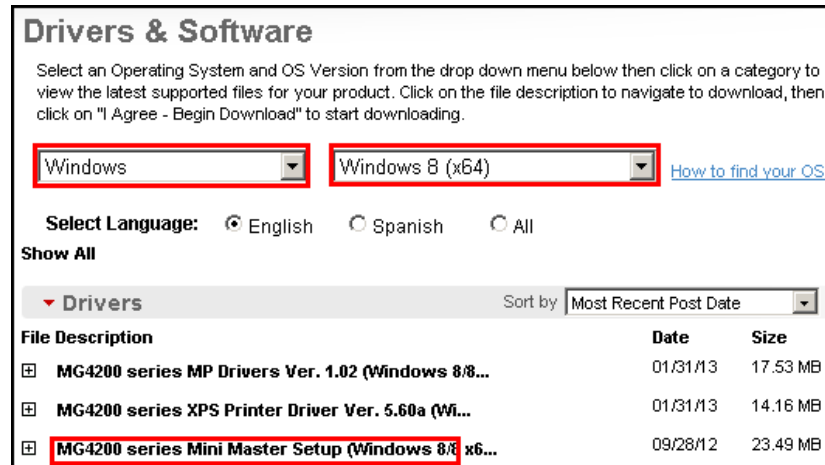
***MP Drivers** is pre-selected and required for wireless network connection. We recommend also installing **My Image Garden** and **Quick Menu** to enjoy all the features of the printer.

Note: If using the downloaded **MiniMaster** file, only the **MP Drivers** are included. **My Image Garden** and **Quick Menu** can be downloaded and installed separately.

Installing the PIXMA MG4220 on Additional Computers

If you can't find your CD-ROM, you may download the MG4200 series Mini Master Setup, which includes the same step-by-step installation as the CD-ROM, by following the instructions below:

1. [Click here to access the MG4220 Drivers & Software page.](#)
2. Select the operating system of your computer (see example below).



Drivers & Software

Select an Operating System and OS Version from the drop down menu below then click on a category to view the latest supported files for your product. Click on the file description to navigate to download, then click on "I Agree - Begin Download" to start downloading.

Windows Windows 8 (x64) [How to find your OS?](#)

Select Language: English Spanish All

Show All

▼ Drivers Sort by Most Recent Post Date

File Description	Date	Size
MG4200 series MP Drivers Ver. 1.02 (Windows 8/8...	01/31/13	17.53 MB
MG4200 series XPS Printer Driver Ver. 5.60a (Wi...	01/31/13	14.16 MB
MG4200 series Mini Master Setup (Windows 8/8.1 x6...	09/28/12	23.49 MB

3. Expand the 'Drivers' section by clicking the red triangle, if necessary.
4. Click on the '**MG4200 series Mini Master Setup**' entry.
5. After reading the details and disclaimer, click 'I Agree – Begin Download' and save the file to your computer or network.
6. Once the download is complete, double-click the file from its download location to begin the installation.

[Back to instructions](#)