



Installing Your Multifunction to Additional Computers on Your Network

PIXMA MG4220

Macintosh OS

Installing Your Multifunction to Additional Computers on Your Network

PIXMA MG4220

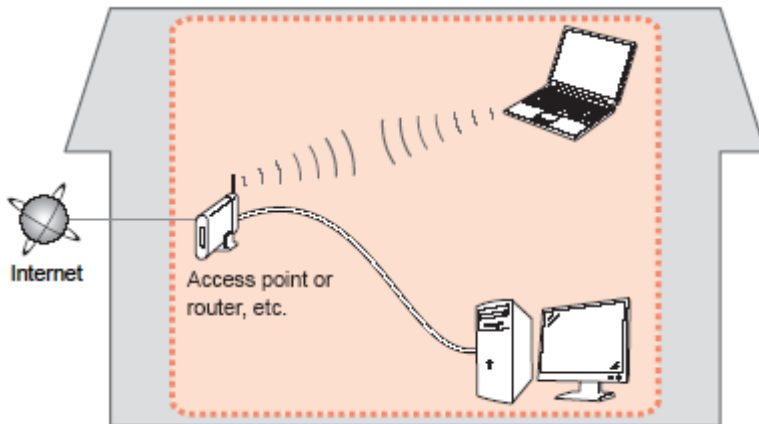
Macintosh OS

Preparing to Connect My Multifunction to My Network	3
Network Requirements	3
Notes on Wireless Connection	4
Installing the Drivers	5

Preparing to Connect My Multifunction To My Network

Network Requirements

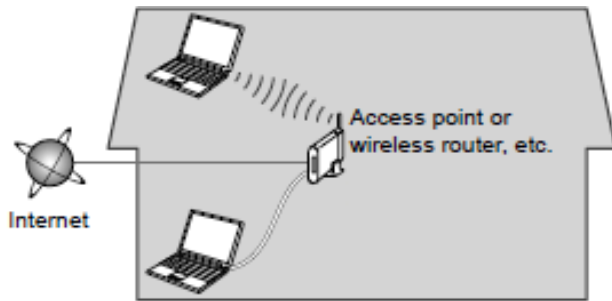
Before connecting the machine to the network, make sure that configuration of the computer and access point or router is complete, and that the computer is connected to the network.



Wireless Connection

Before connecting the machine to the network, the computer needs to be connected to the network. Make sure that configuration of the computer and access point or router is complete.

Preparing to Connect My Multifunction To My Network



An "Ad-hoc connection," which establishes a direct connection to the computer over a wireless connection without using an access point, is not supported.

Notes on Network Connection

- The configuration, router functions, setup procedures and security settings of the network device vary depending on your system environment. For details, refer to your device's instruction manual or contact its manufacturer.
- In an office setup, consult your network administrator
- If you connect to a network that is not protected with security measures, there is a risk of disclosing data such as your personal information to a third party.
- Place the machine and computer on the same network segment.

Installing the Drivers & Software

Software Installation

To use the machine by connecting it to a computer, software including the drivers needs to be copied (installed) to the computer's hard disk. (The installation time varies depending on the computer environment or the number of application software to be installed.)

IMPORTANT

- Log on as the administrator (or a member of the Administrators group).
- Quit all running applications before installation.
- Do not switch users during the installation process.
- Internet connection may be required during the installation. Connection fees may apply. Consult the internet service provider.
- It may be necessary to restart your computer during the installation process. Follow the on-screen instructions and do not remove the Setup CD-ROM during restarting. The installation resumes once your computer has restarted.
- If the firewall function of your security software is turned on, a warning message may appear that Canon software is attempting to access the network. If such a warning message appears, set the security software to always allow access.

Installing the Drivers

Installing the PIXMA MG4220 to additional Mac computers on your Wireless Network

If your MG4220 has already been set up for on your wireless network , it is only necessary to install the software on the additional computer(s). The printer does not have to be reset or connected via USB cable to the additional computer(s).

Simply insert the Setup CD-ROM that came with your printer into your CD-ROM drive and proceed through the easy to follow instructions. You'll be printing wirelessly in no time. Be sure to select **Wireless Connection** on the Connection Method Selection screen.

If you do not have or cannot use the provided CD-ROM, you can still install the printer on your wireless network. [Click here for instructions.](#)

Installing the Drivers

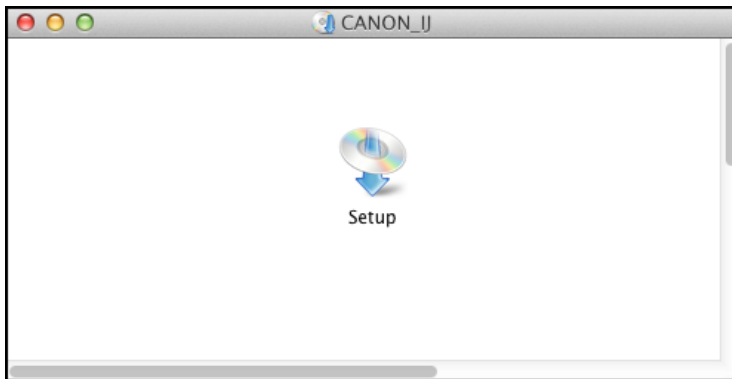
1. Insert the CD-ROM into the computer.



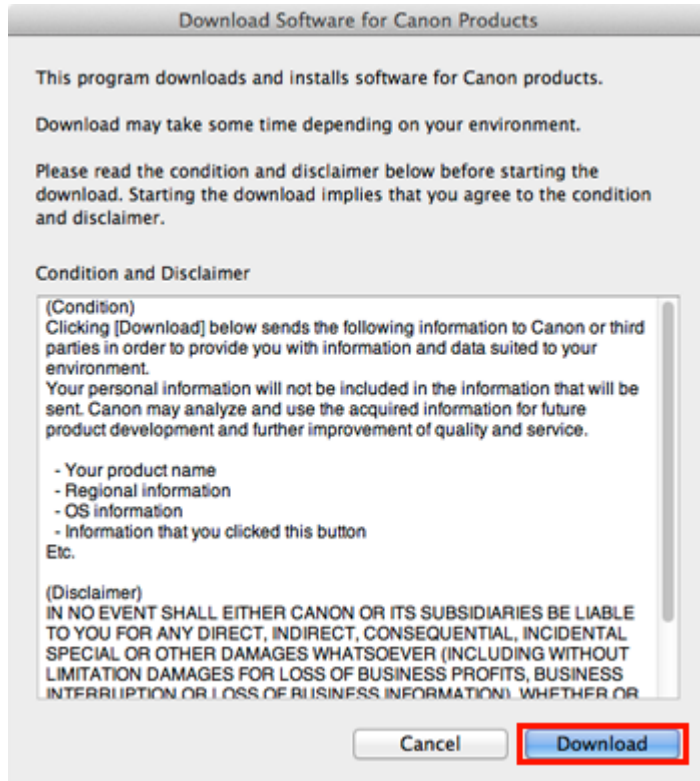
IMPORTANT

If the USB cable is already connected, unplug it. If a message appears on the computer, click Cancel.

2. Double-click the **Setup** icon in the CD-ROM folder, then click **Download** in the subsequent window.



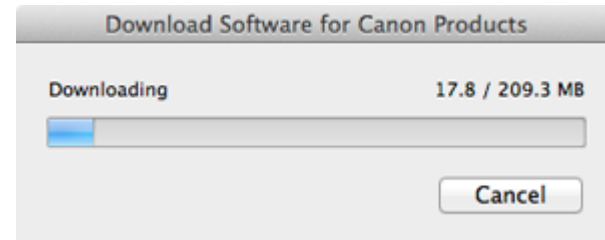
Installing the Drivers



REFERENCE



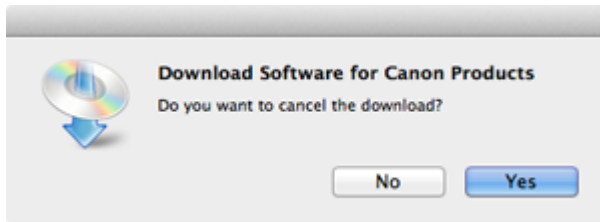
- When the CD-ROM folder does not open automatically, double-click the CD-ROM icon displayed on the desktop.
- The screen below is displayed while downloading.



Installing the Drivers

If you click **Cancel** while downloading, you will see the following screen.

- If you click **No**, you will return to the screen displayed while downloading.
- If you click **Yes**, the download is cancelled. In this case, the files under the download are deleted.

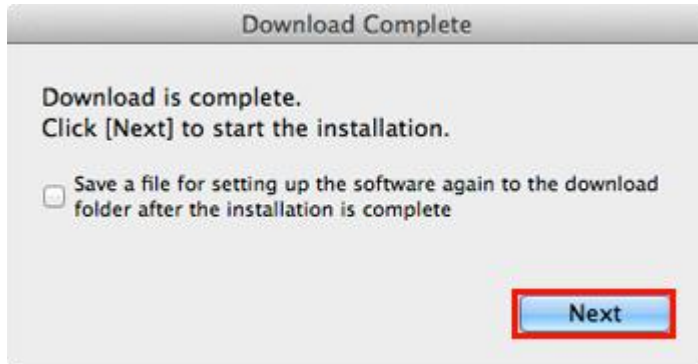


When the download fails, the screen below is displayed.
Click **OK**, and you will go back to the screen for downloading in the procedure .



Installing the Drivers

3. When the download is complete, the screen below is displayed. Click **Next**.



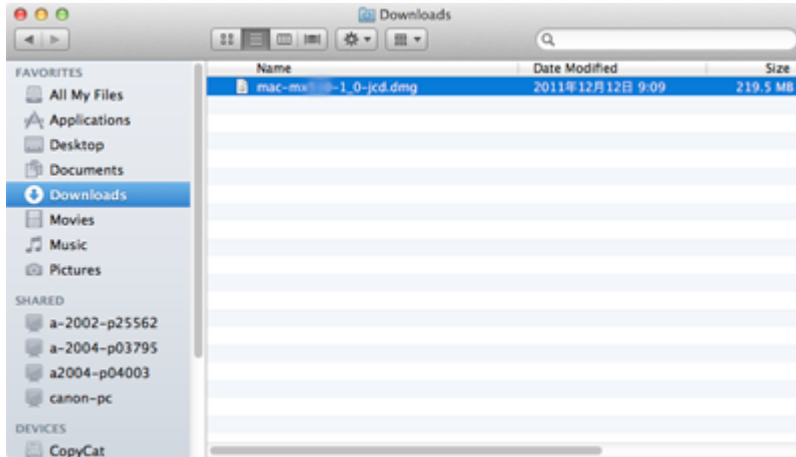
REFERENCE

Select "Save a file for setting up the software again to the download folder after the installation is complete," and the file will be saved to the download folder.



Installing the Drivers

You can perform the setup later using this file.

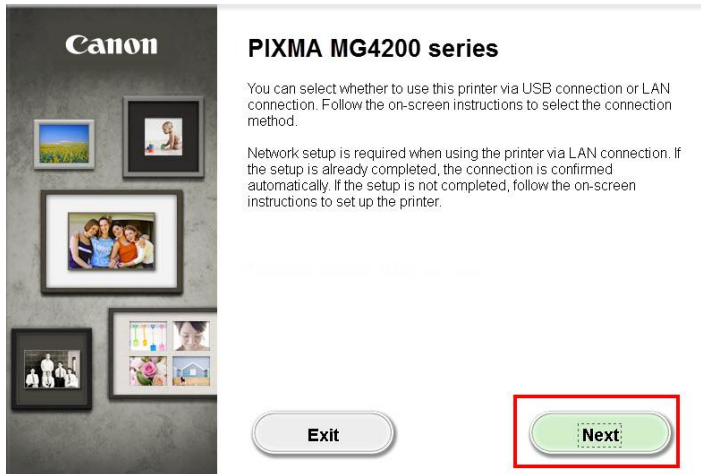


4. In the subsequent screen, enter the administrator name and password. Then click **OK**.



Installing the Drivers

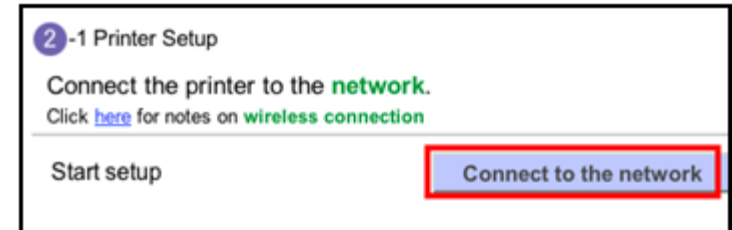
5. Click Next



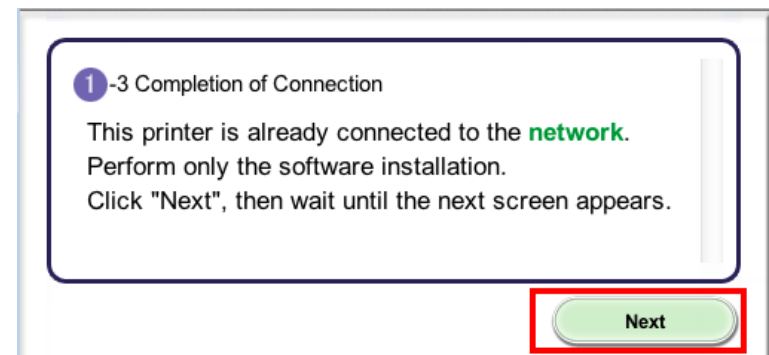
6. Click **Wireless Connection** for **Connection Method**.



7. Follow any instructions and Click **Connect to the Network** when the **Printer Setup** window appears .



8. Setup will search for printers on the network. The **Completion of Connection** screen below is displayed. Network connection setting is complete.



Installing the Drivers

9. Continue to follow instructions. On the **Software Installation List** screen, select any additional software* you wish to install, then click **Next**

Software Installation List

The selected software will be installed. Make sure that the software you want to install is selected, and then click [Next].

You need to install all the software below to use all functions of this printer.

<input checked="" type="checkbox"/>	MP Drivers	180 MB
<input type="checkbox"/>	ScanGear	80 MB
<input type="checkbox"/>	On-screen Manual	280 MB
<input type="checkbox"/>	My Image Garden	680 MB
<input type="checkbox"/>	Quick Menu	25 MB
<input checked="" type="checkbox"/>	Canon IJ Network Tool	20 MB
<input type="checkbox"/>		
<input type="checkbox"/>		
<input type="checkbox"/>		
<input type="checkbox"/>		
<input type="checkbox"/>		
<input type="checkbox"/>		
<input type="checkbox"/>		
<input type="checkbox"/>		
<input type="checkbox"/>		

Drive Lion 28541 MB free space

Total used space: 200 MB

Select All
Clear All

Back
Next

***MP Drivers and Canon IJ Network Tool** which are pre-selected are required for wireless network connection. We recommend also installing **ScanGear, My Image Garden** and **Quick Menu** to enjoy all the features of the printer.

10. Continue to follow any instructions until the **Setup Completion** or **Completion of Connection** screen below is displayed. Network connection setting is complete.

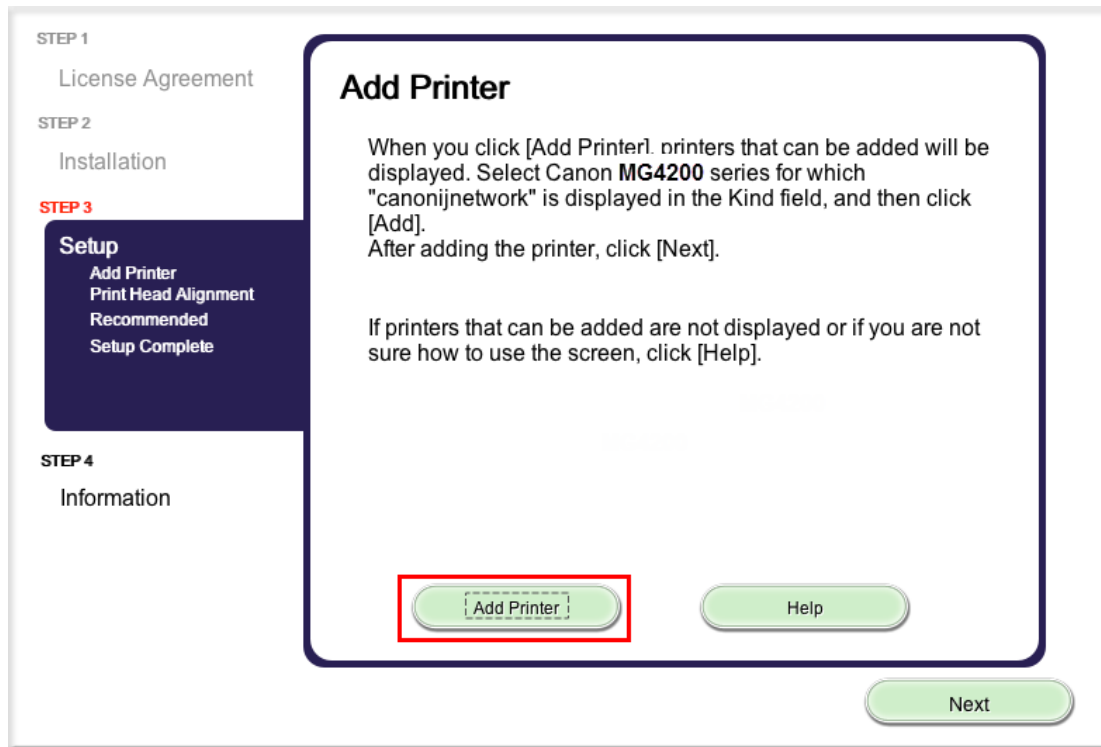
The screenshot shows a software window titled "4-7 Completion of Connection". Inside the window, there is a text area that reads: "The network connection setup is now complete. Click "Next", then wait until the next screen appears." At the bottom right of the window, there is a green button with the text "Next". This button is highlighted with a red rectangular border. The window has a standard title bar and a scrollbar on the right side.

Click **Next**

Adding the Printer

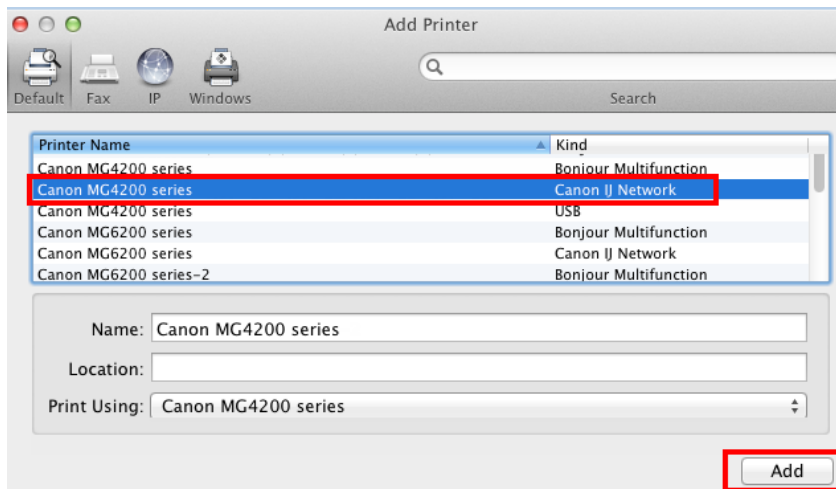
Add the Printer

1. Click Add Printer on the Add Printer Screen



Adding the Printer

2. Select **Canon MG4200 series** with **Canon IJ Network** listed in the **Kind** column*. Click **Add**.



*REFERENCE

If the machine is not detected, make sure of the following:

- The machine is turned on.
- The firewall function of any security software is turned off.
- The computer is connected to the access point.

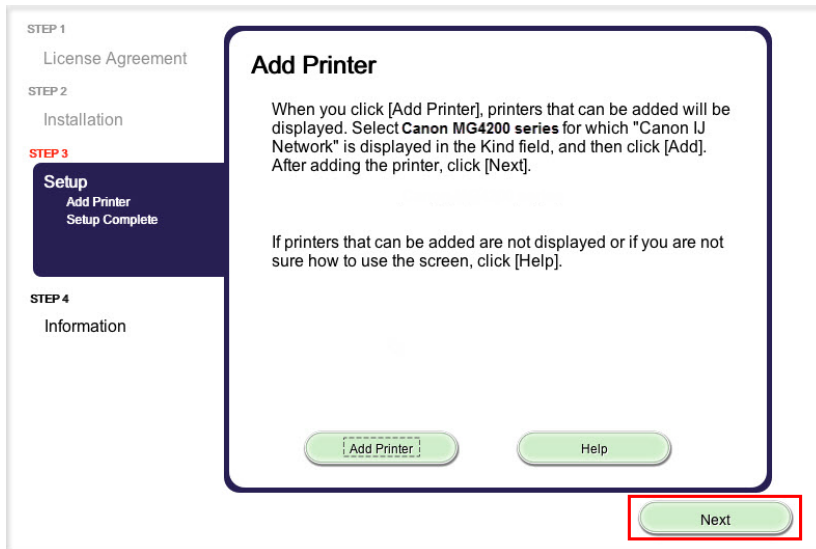
CAUTION

If you will be installing the Canon printer driver on Mac OS X and using the printer through a network connection, you can select **Bonjour** or **Canon IJ Network** in the **Add Printer** dialog.

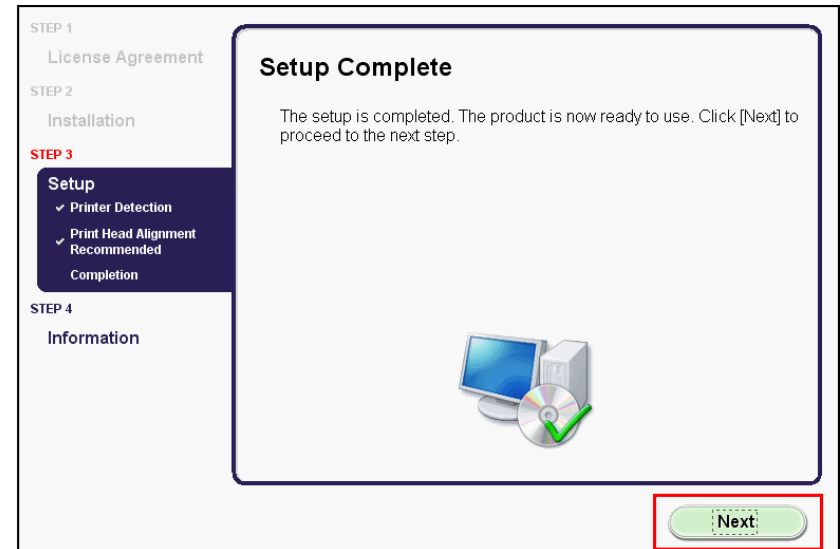
If **Bonjour** is selected, remaining ink level messages may differ from those indicated by **Canon IJ Network**. Canon recommends you to use **Canon IJ Network** for printing.

Adding the Printer

4. Click Next.



5. Click Next.



Setup is complete. Click **Next** to finish the remaining information section.

Installing the Drivers using downloaded files

If you can't find your CD-ROM, you can set up the printer by downloading and installing the **MG4200 series Mini Master Setup**, which includes the same step-by-step installation as the CD-ROM. Follow the instructions below:

1. [Click here to access the MG4220 Drivers & Software page.](#)
2. Select the operating system and version of your computer (see example below).
3. Expand the 'Drivers' section, if necessary, by clicking the red triangle.
4. Click the file name, then click 'I Agree – Begin Download' and save the file to your computer.

Drivers & Software

Select an Operating System and OS Version from the drop down menu below then click on a driver to view the latest supported files for your product. Click on the file description to navigate to download. Click on "I Agree - Begin Download" to start downloading.

Mac OS

OS X v10.8 Mountain Lion

[How to find your OS](#)

Select Language: ☒ English ☐ Spanish ☐ All

Show All

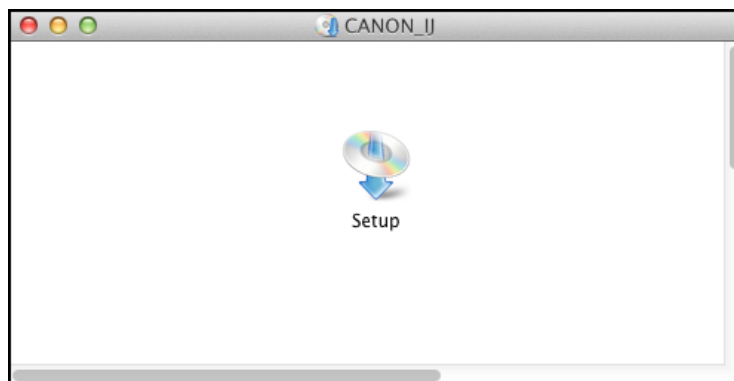
▼ Drivers

Sort by Most Recent Post Date

File Description	Date
<input checked="" type="checkbox"/> MG4200 series Mini Master Setup (OS X 10.5/10.6/10.7/10.8)	09/28/12
<input checked="" type="checkbox"/> ICA Driver Ver. 2.1.1m (OS X 10.6/10.7/10.8)	09/14/12
<input checked="" type="checkbox"/> MG4200 series CUPS Printer Driver Ver. 10.67.1....	07/11/12
<input checked="" type="checkbox"/> MG4200 series Scanner Driver Ver. 19.0.0a (OS X...	07/11/12

Installing the Drivers using downloaded files

5. Once the download is complete, double-click the file from its download location to begin the installation.
6. Click the **Setup** icon



7. Follow the same instructions as installing from the CD-ROM beginning with [Step 6, Connection Method Selection](#).