

# Installing Your Multifunction to Additional Computers on Your Network

PIXMA MX860

Windows OS

# Installing Your Multifunction to Additional Computers on Your Network

Pixma MX860  
Windows OS

<b>Downloading &amp; Installing the Drivers</b>	<b>3</b>
Downloading the Driver	3
Installing the Driver	6
Setup the Machine and the Computer	8

## Downloading the Driver

To use the machine by connecting it to a computer, software including the drivers needs to be copied (installed) to the computer's hard disk. The installation process takes about 20 minutes. (The installation time varies depending on the computer environment or the number of applications to be installed.)

### Step One

[Go to the Drivers & Software for your model](#)

### Step Two

Select your operating system in the **Select OS** dropdown menu.

#### Drivers & Software

Choose an operating system from the drop down menu then select the appropriate driver or software from the list below

Choose Operating System:



Select OS	Downloaded	File Size
Select OS		
Windows 7		
Windows 7 (x64)		
Windows Vista		
Windows Vista (x64)		

Firmware

No firmware updates are available for

## Step Three

In the Drivers section, click the **Download** icon for the **MP Driver for Network**

▼ Drivers			
File Description	Post Date	Size	Download
☒ MX860 series MP Driver Ver. 1.02 (Windows 7/V... File Name: mx860swin102ea24.exe	10/26/09	16.59MB	
☒ <a href="#">MX860 series MP Driver Ver. 1.02 for Network...</a> File Name: mx860swinns102e2-2.exe	10/16/09	24.54MB	

This product is a driver for Canon IJ multifunction printers. Install these MP drivers if you have already had a LAN connection.

## *Step Four*

On the next screen, read the information and instructions and click **I Agree - Begin Download**

Select [Save] or [Run]. If [Run] is selected, the file will be automatically installed

If [Save] is selected, once the file has been downloaded, double-click it to begin the installation process

### **IMPORTANT:**

- Quit all running applications before installation.
- Log on as the administrator (or a member of the Administrators group).
- Do not switch users during the installation process.
- Internet connection may be required during the installation. Connection fees apply.
- It may be necessary to restart your computer during the installation process. Follow the on-screen instructions. The installation resumes once your computer has restarted.

If the firewall function of your security software is turned on, a warning message may appear that Canon software is attempting to access the network. If such a warning message appears, set the security software to always allow access.

## Installing the Driver

**NOTE:** If a **User Account Control** screen appears, click **Continue** or **Yes** (depending on Windows version) to continue.

**NOTE:** If the same screen reappears in subsequent steps, click **Continue** or **Yes**.

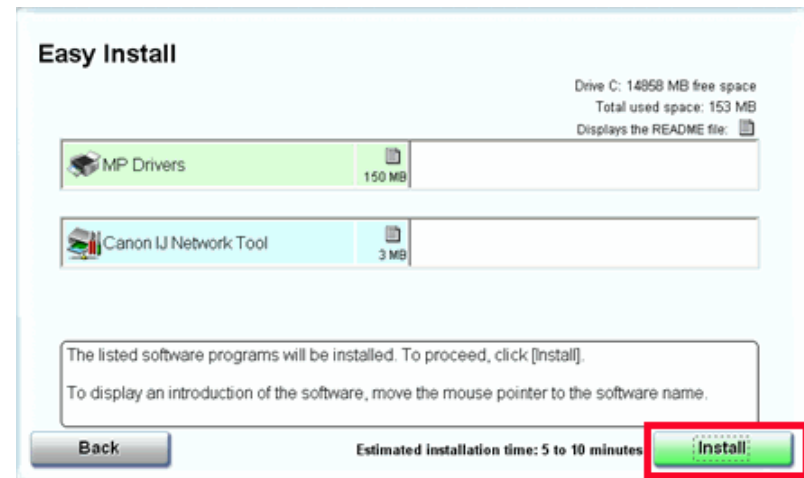
### Step One

Click **Easy Install**.



### Step Two

Click **Install**.



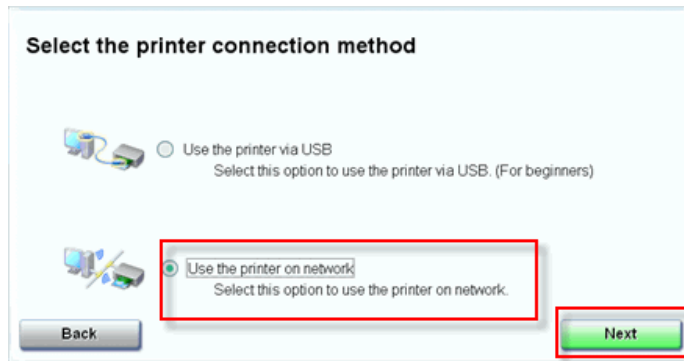
# Downloading and Installing the Drivers

[<< Previous](#)

[Next >>](#)

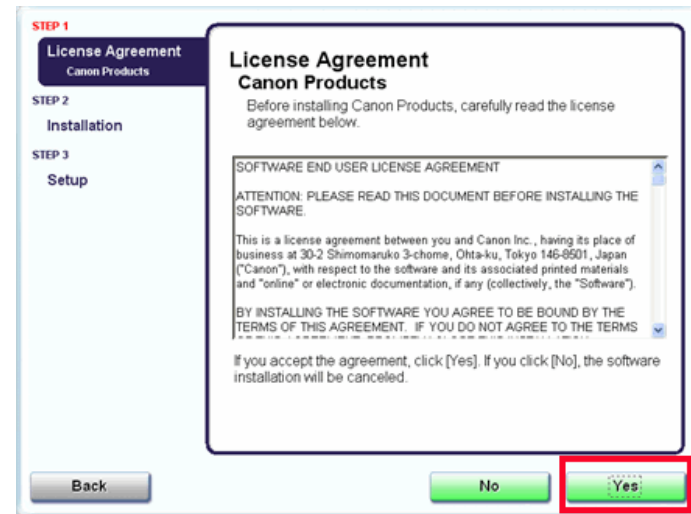
## Step Three

Select **Use the Printer on network** and click **Next**.



## Step Four

Read the License Agreement screen carefully and click **Yes**.

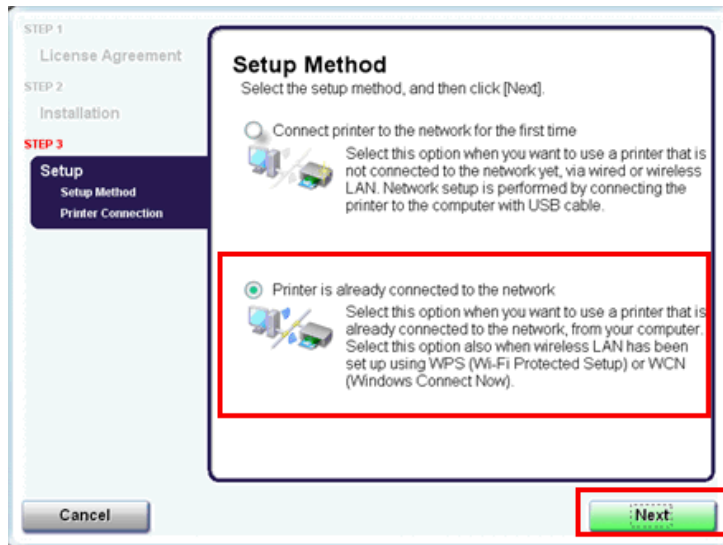


Installation starts. Follow any on-screen instructions to install the software.

## Setup the Machine and the Computer

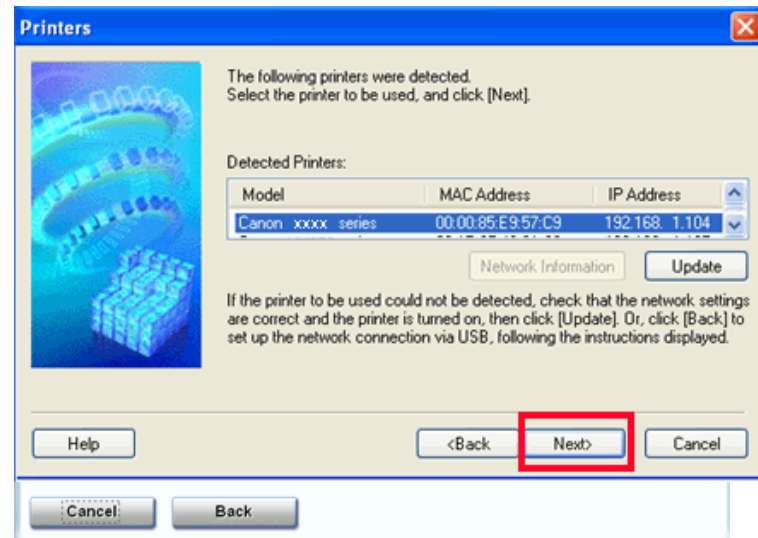
### Step One

On the **Setup Method** screen, select **Printer is already connected to the network**, then click **Next**.



### Step Two

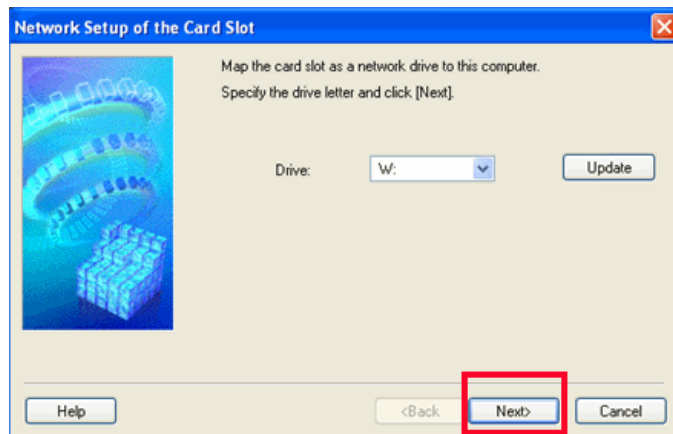
When the Printers screen appears, make sure that the machine is selected and click **Next**.





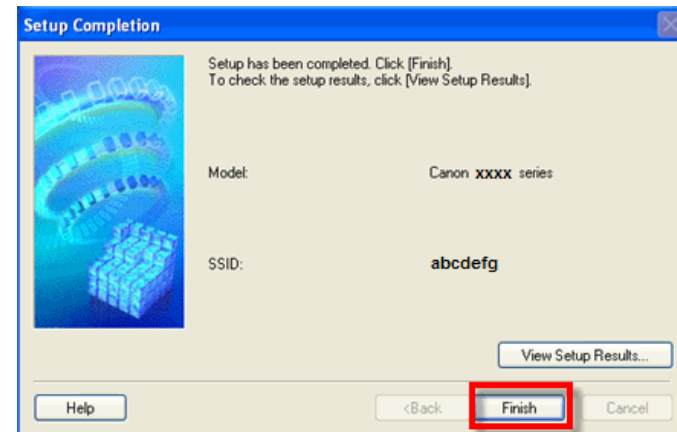
## Step Three (Windows 2000/XP Only)

When the **Network Setup of the Card Slot** dialog box appears, specify the drive letter, then click **Next**.



## Step Four

When the **Setup Completion** dialog box appears, click **Finish**.



Click **Restart** if the **Restart** window appears and then click **Exit**