

# **Installing Your Multifunction to Additional Computers on Your Network**

**PIXMA MP980 / PIXMA MP620**

**Windows OS**

# Installing Your Multifunction to Additional Computers on Your Network

PIXMA MP980 / PIXMA MP620

Windows OS

<b>Downloading &amp; Installing the Drivers</b>	<b>3</b>
Downloading the Driver	3
Installing the Driver	6
Setup the Machine and the Computer	8

## Downloading the Driver

To use the machine by connecting it to a computer, software including the drivers needs to be copied (installed) to the computer's hard disk. The installation process takes about 20 minutes. (The installation time varies depending on the computer environment or the number of applications to be installed.)

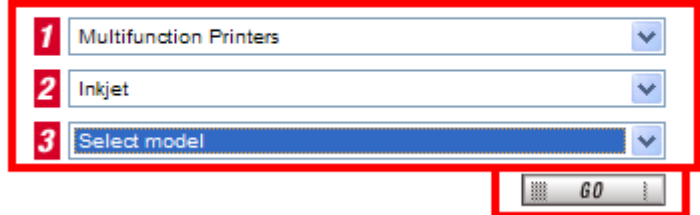
### Step One

Go to the Canon USA Download Library  
[Click here to go to the Canon USA download library](#)

### Step Two

Select **Multifunction Printers** in the first menu dropdown, **Inkjet** in the second and your model in the third. Click **Go**.

**PRODUCT MENU**  
Please choose the model from the dropdown menus below:



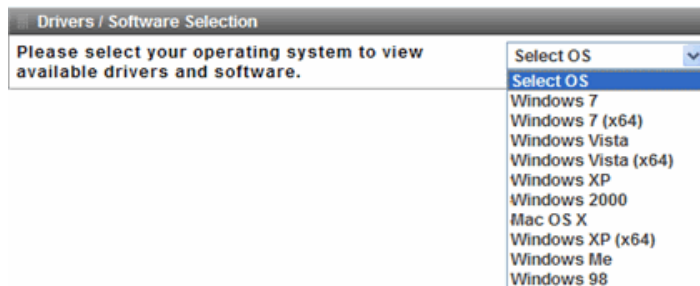
The screenshot shows a web form titled 'PRODUCT MENU' with the instruction 'Please choose the model from the dropdown menus below:'. There are three dropdown menus, each with a red box containing a number (1, 2, or 3) to its left. The first dropdown is labeled '1 Multifunction Printers', the second is '2 Inkjet', and the third is '3 Select model'. Below the dropdowns is a 'GO' button, also highlighted by a red box.

1	Multifunction Printers	▼
2	Inkjet	▼
3	Select model	▼

GO

## Step Three

In the **Drivers / Software Selection** section, select your operating system in the **Select OS** dropdown menu.



## Step Four

In the Drivers section, click the link\* (red printing) for the **MP Driver for Network**

\*Name varies by model

The screenshot shows a table titled "Drivers". The table has four columns: "File Name and Description", "Version", "File Size", and "Date Posted". The first row of data is highlighted with a red border. The text in this row is: "MP980 series MP Driver Ver. 1.02 for Network (Windows 7/Vista /XP/2000)", "1.02", "20.84 MB", and "10/16/2009". Below the description, the filename "mp980swinns102en.exe" is displayed in red text.

File Name and Description	Version	File Size	Date Posted
MP980 series MP Driver Ver. 1.02 for Network (Windows 7/Vista /XP/2000) <b>mp980swinns102en.exe</b>	1.02	20.84 MB	10/16/2009

## *Step Five*

On the next screen, read the information and instructions and click **I Agree - Begin Download**.  
Once the file has been downloaded, double-click it to begin the installation process.

### **IMPORTANT:**

- Quit all running applications before installation.
- Log on as the administrator (or a member of the Administrators group).
- Do not switch users during the installation process.
- Internet connection may be required during the installation. Connection fees apply.
- It may be necessary to restart your computer during the installation process. Follow the on-screen instructions. The installation resumes once your computer has restarted.

If the firewall function of your security software is turned on, a warning message may appear that Canon software is attempting to access the network. If such a warning message appears, set the security software to always allow access.

Once the file has been downloaded, double-click it to begin the installation process.

## Installing the Driver

**NOTE:** If a **User Account Control** screen appears, click **Continue** or **Yes** (depending on Windows version) to continue.

**NOTE:** If the same screen reappears in subsequent steps, click **Continue** or **Yes**.

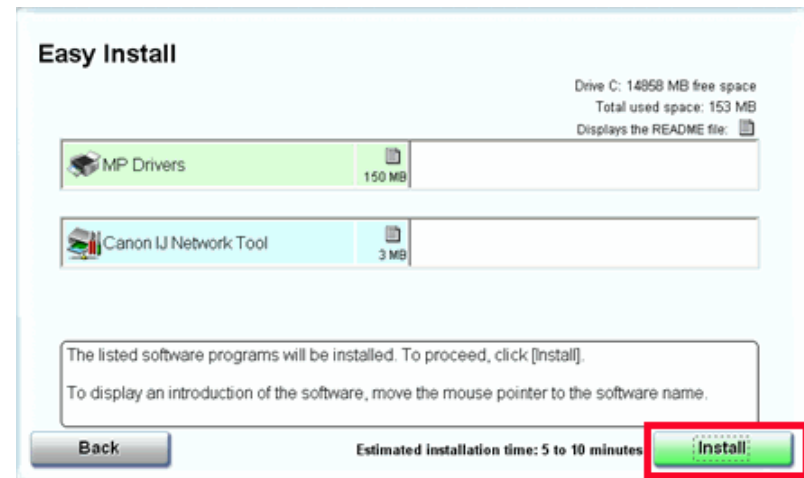
### Step One

Click **Easy Install**.



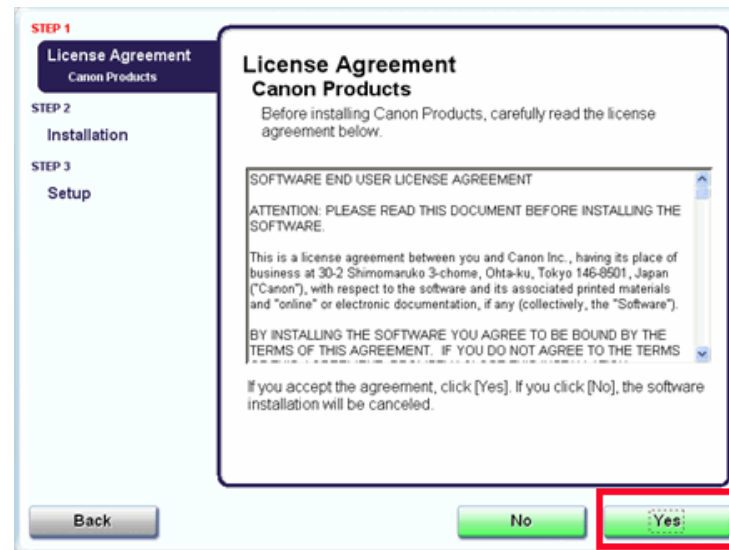
### Step Two

Click **Install**.



## Step Three

Read the License Agreement screen carefully and click Yes.

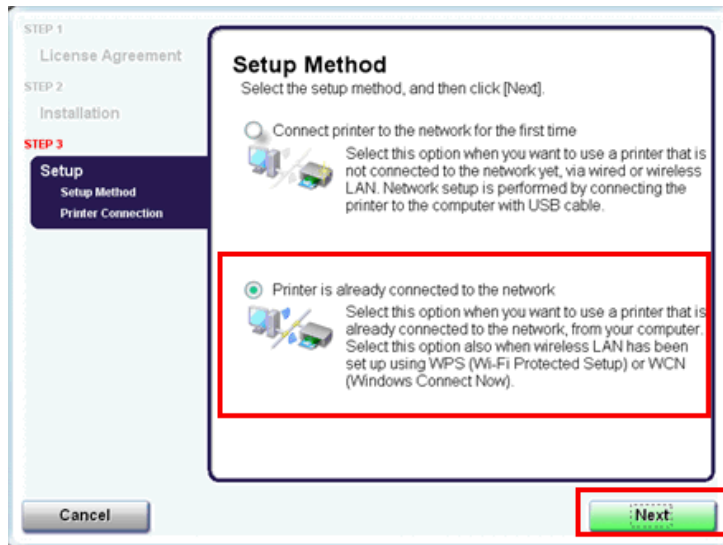


Installation starts. Follow any on-screen instructions to install the software.

## Setup the Machine and the Computer

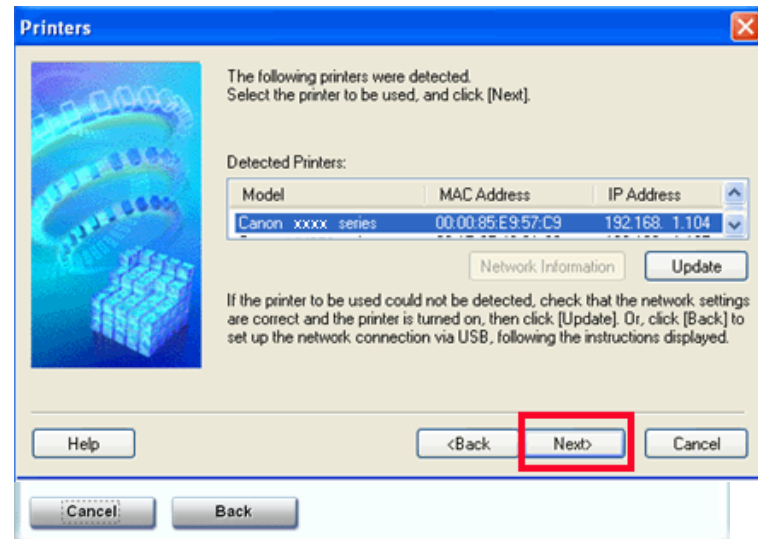
### Step One

On the **Setup Method** screen, select **Printer is already connected to the network**, then click **Next**.



### Step Two

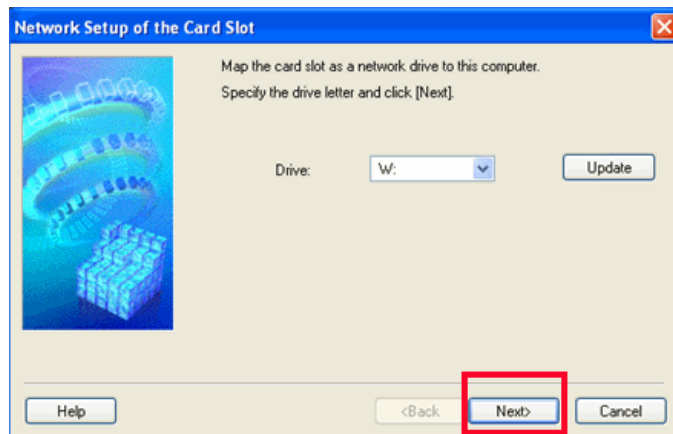
When the **Printers** screen appears, make sure that the machine is selected and click **Next**.





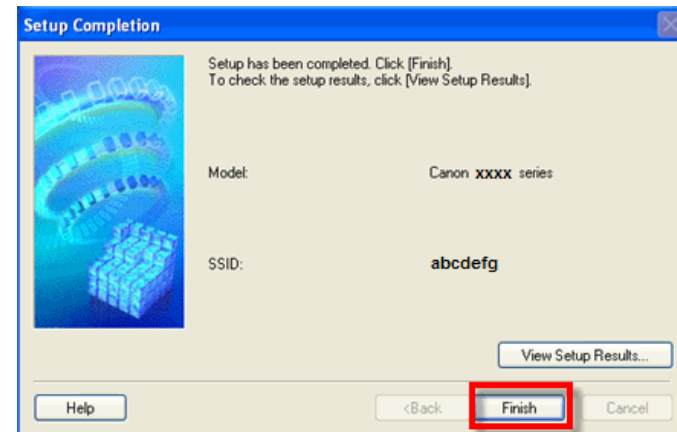
## Step Three (Windows 2000/XP Only)

When the **Network Setup of the Card Slot** dialog box appears, specify the drive letter, then click **Next**.



## Step Four

When the **Setup Completion** dialog box appears, click **Finish**.



Click **Restart** if the **Restart** window appears and then click **Exit**