

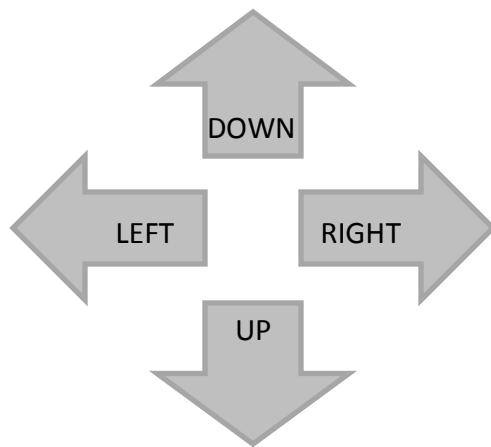


Using Your Multifunction with Additional computers on Your Network

PIXMA MX420

Mac OS

Navigation Tips for Macintosh Users



To navigate this guide, please use the arrows on the MAC keyboard or use the PAGE UP and Page DOWN keys.

Page UP

Page DOWN

Using Your Multifunction with Additional computers on Your Network

PIXMA MX420

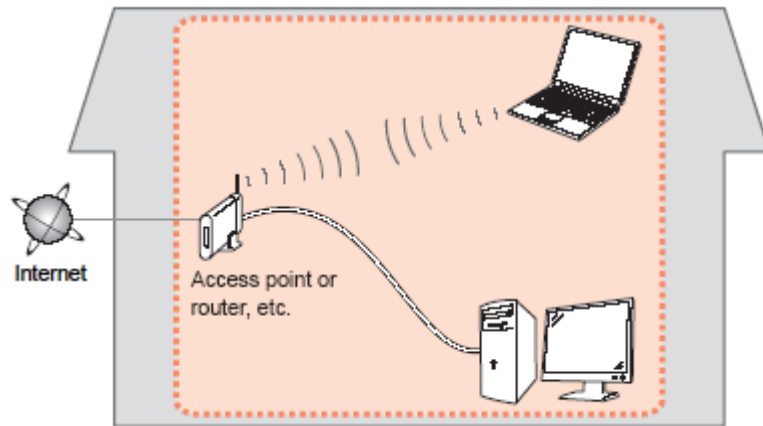
Mac OS

Preparing to Connect My Multifunction to My Network	4
Network Requirements	4
Important Information You Need Before Adding Your Multifunction	5
Installing the Drivers & Software	6
Registering the Printer & Scanner	12

Preparing to Connect My Multifunction To My Network

Network Requirements

Before connecting the machine to the network, make sure that configuration of the computer and access point or router is complete, and that the computer is connected to the network.



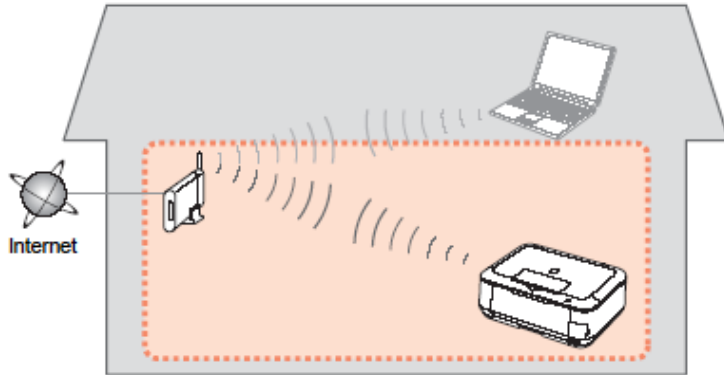
Notes on Network Connection

- The configuration, router functions, setup procedures and security settings of the network device vary depending on your system environment. For details, refer to your device's instruction manual or contact its manufacturer.
- The machine cannot be used over a wireless and wired connection at the same time.

Wireless Connection

Connect to your network environment over a wireless connection.

Preparing to Connect My Multifunction To My Network To My Network



An "Ad-hoc connection," which establishes a direct connection to the computer over a wireless connection without using an access point, is not supported.

Be sure to prepare an access point.

Important Information You Need Before Adding Your Multifunction

The following information is required to connect to your access point or router.

- **Access Point Name/Network Name:**

Also referred to as **SSID**. A name to identify the specific access point.

- **Network Key:**

Also referred to as encryption key, WEP key or WPA/WPA2 passphrase, Pre-Shared key.

A password required to set to prevent unauthorized access to communication.

Check your access point or router for the following information, and then write it down.

NOTE: For details on how to check the following information, refer to the manual of your access point or router, or contact its manufacturer.

Installing the Drivers & Software

Installing the Drivers & Software

To use the machine by connecting it to a computer, software including the drivers needs to be copied (installed) to the computer's hard disk. The installation process takes about 20 minutes. (The installation time varies depending on the computer environment or the number of applications to be installed.)

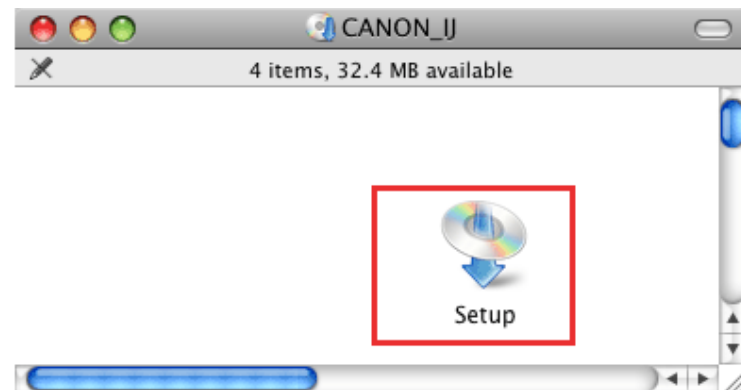
Step One

Turn on the computer, then insert the **Setup CDROM** into the CD-ROM drive

Step Two

Double-click the **Setup** icon of the CD-ROM folder to proceed to the following screen.

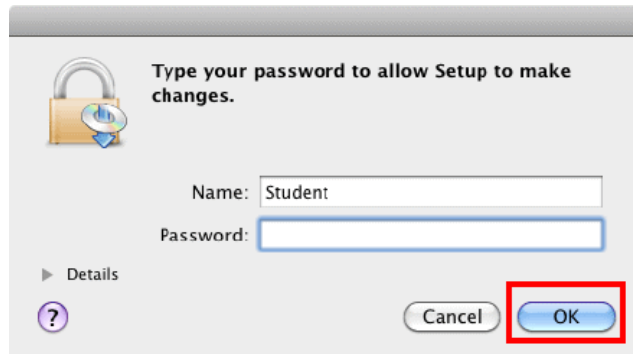
If the CD-ROM folder does not open automatically, double-click the CD-ROM icon on the desktop.




Installing the Drivers & Software

Step Three

Enter your administrator name and password. Click **OK**.



A Windows-style administrator login dialog box. At the top left is a padlock icon with a blue arrow pointing to it. To the right of the icon, the text reads "Type your password to allow Setup to make changes." Below this, there are two text input fields: "Name:" with the text "Student" entered, and "Password:" which is empty. To the left of the password field is a small "Details" link with a right-pointing triangle. At the bottom left is a help icon (a question mark in a circle). At the bottom right are two buttons: "Cancel" and "OK". The "OK" button is highlighted with a red rectangular border.

If you do not know your administrator name or password, click Help  , then follow the on-screen instructions.

Step Four

Click **Easy Install**. Click **Install**.

The drivers, application software, and on-screen manuals are installed all together.



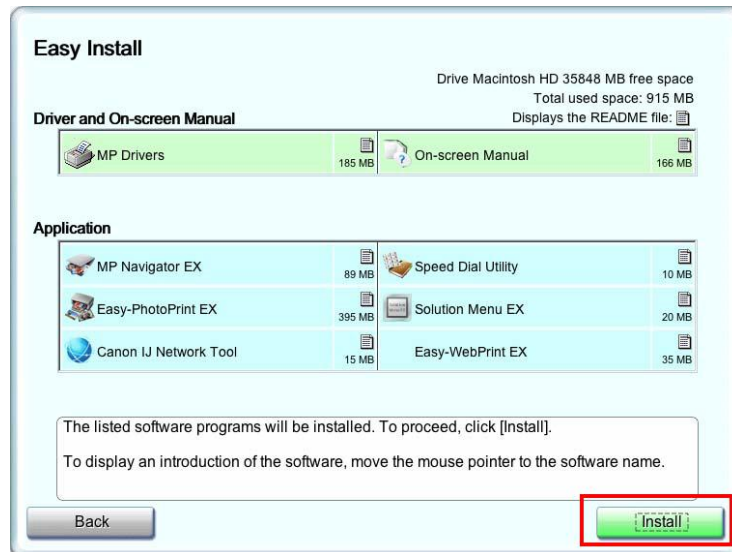
The Canon PIXMA MX420 series installation screen. The top left features the Canon logo. Below it is a collage of images including a person on a beach, a dog, a clock, and a tree. To the right of the logo, the text "PIXMA MX420 series" is displayed. Below this, the instruction "Select the installation method and follow the instructions on the screens." is shown. Three installation options are presented as buttons: "Easy Install" (green, highlighted with a red border and a dashed box), "Custom Install" (blue), and "Exit" (grey). Below the "Easy Install" button, the text "Recommended for first-time users" and "Automatically installs the software." is displayed. Below the "Custom Install" button, the text "This method allows you to select the software programs that you want to use and installs only the selected programs." is shown. Below the "Exit" button, the text "Cancels software installation." is displayed.

Installing the Drivers & Software

Step Five

Click **Install**

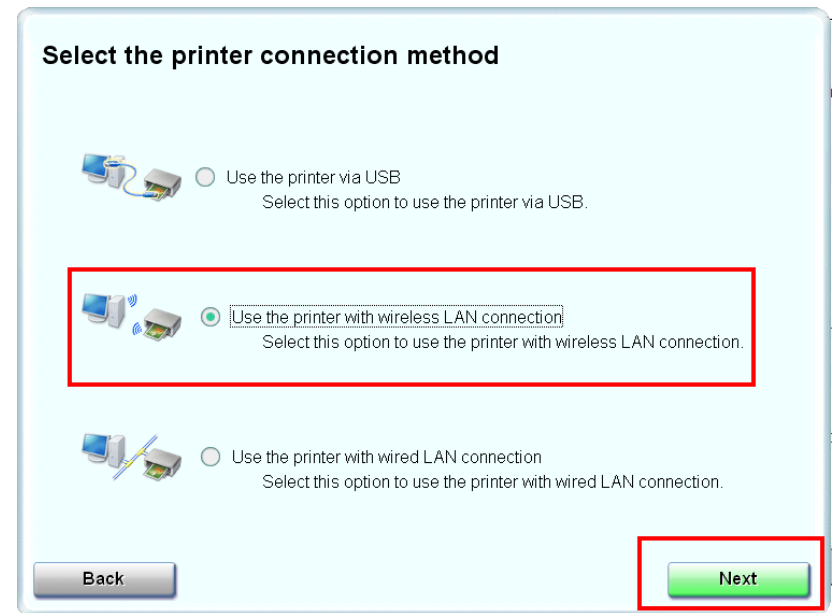
*Applications may vary by model



Step Six

Select **Use the printer with wireless LAN connection**, then click **Next**.

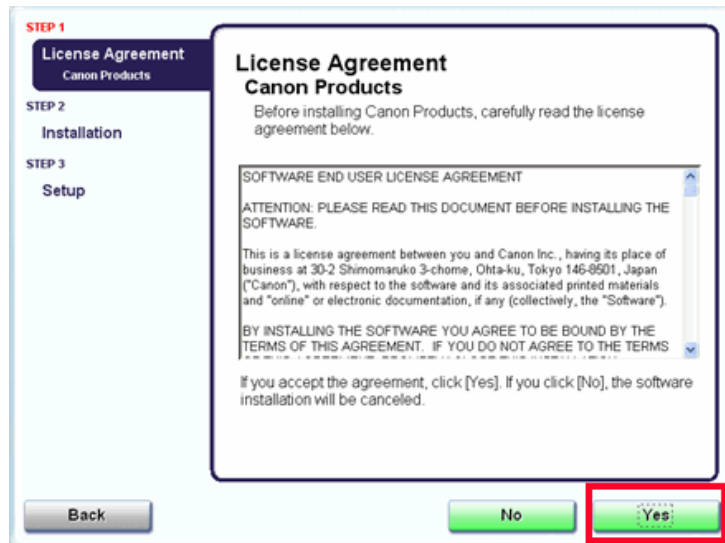
Follow any on-screen instructions to proceed with the software installation.



Installing the Drivers & Software

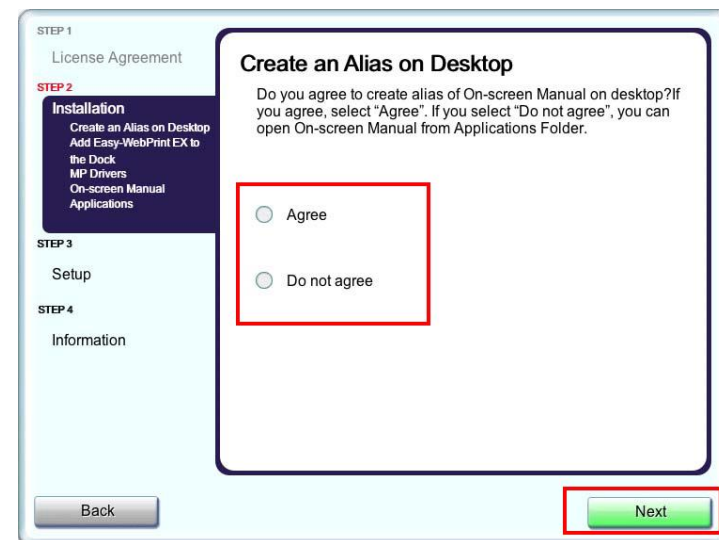
Step Seven

Read the License Agreement screen carefully and click **Yes**.



Step Eight

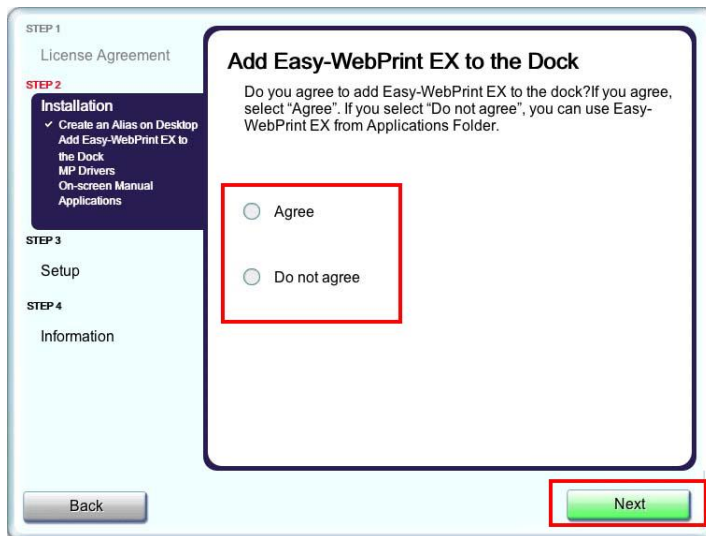
When the **Create an Alias on Desktop** screen appears, select **Agree** if you want an alias of the On-Screen manual to be placed on the desktop, otherwise select Do not Agree, then click **Next**



Installing the Drivers & Software

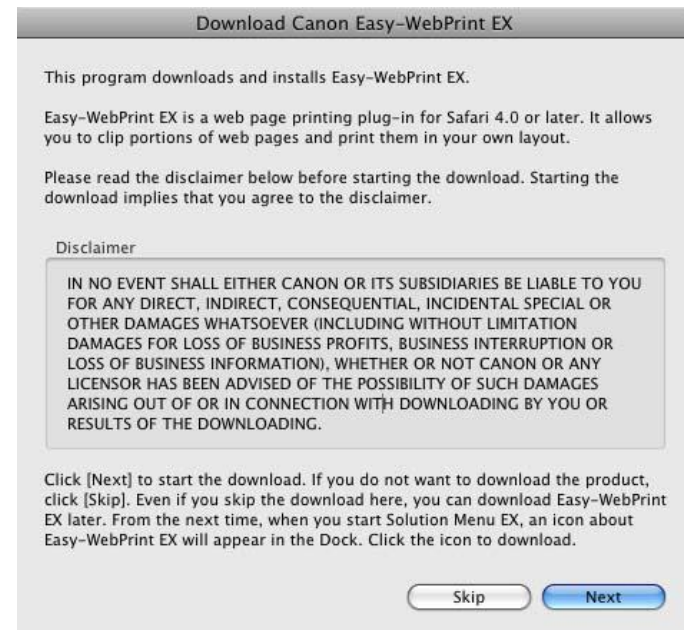
Step Nine

Select **Agree** or **Do not Agree** on the **Add Easy-WebPrint EX to the Dock** screen, then click **Next**



Step Ten

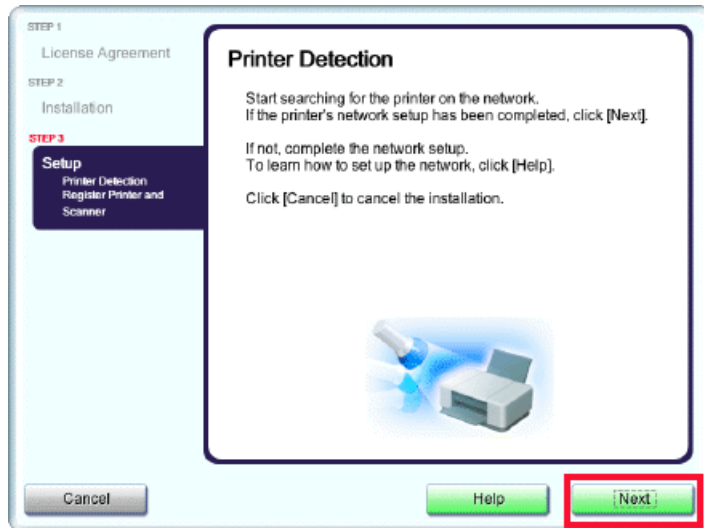
Click **Skip** or **Next** on the Download Easy-webPrint screen



Installing the Drivers & Software

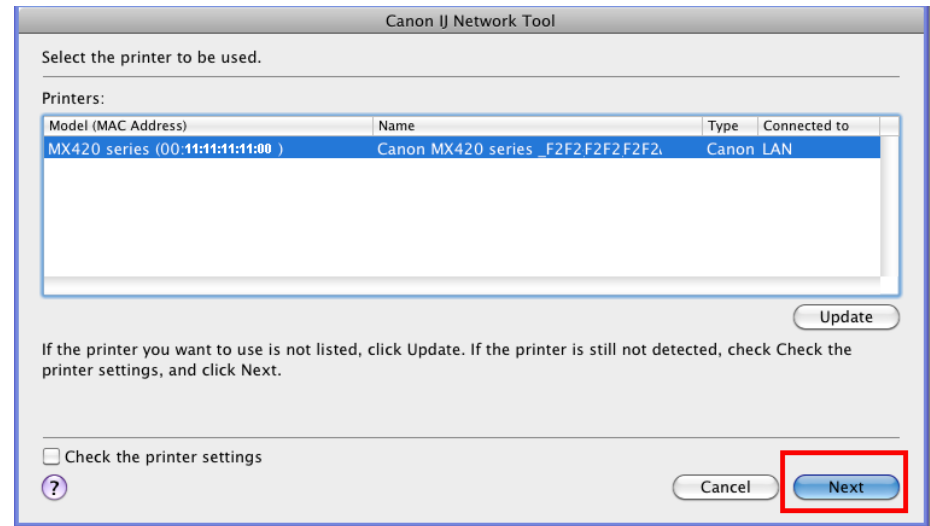
Step Eleven

When the **Printer Detection** screen appears, click **Next**



Step Twelve

On the **Canon IJ Network Tool** screen, select **MX420 series** in **Printers** and click **Next**.



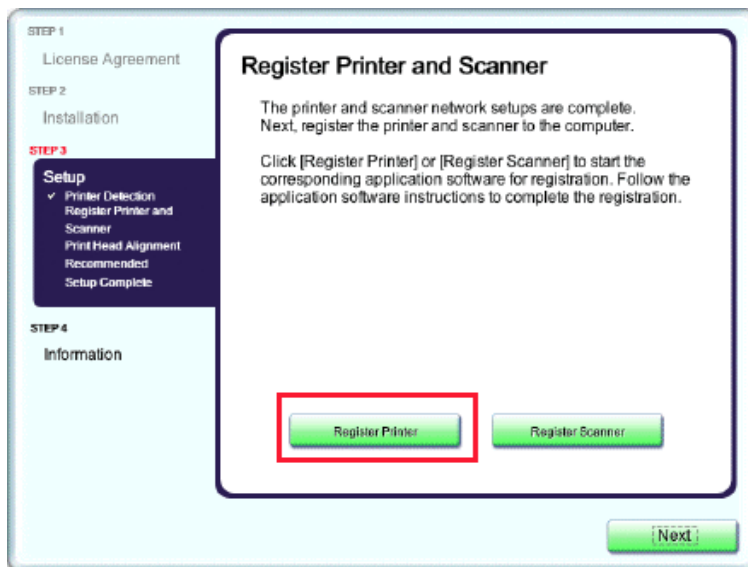
Registering the Printer & Scanner

Registering the Printer & Scanner

This section describes how to register the machine on a Macintosh computer.

Step One

When the **Register Printer and Scanner** screen appears, click **Register Printer**.



Proceed to the section that relates to your operating system for further installation instructions

Mac OS X v. 10.5.x / 10.6.x: Go to Step **2-A**

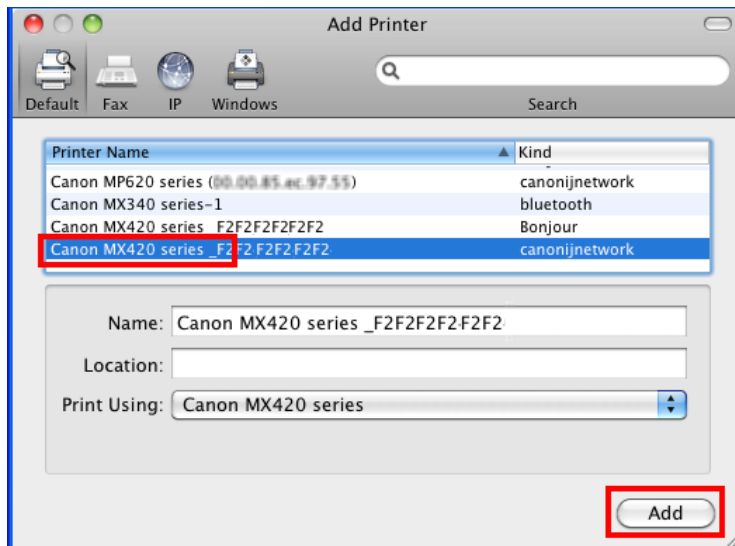
Mac OS X v. 10.4.11: Go to Step **2-B**

Registering the Printer & Scanner

Step Two

2-A

1. Select **Canon MXxxx series** in the list of printers, then click **Add**. *xxx refers to the model number. **MX420 series** shown in example, below



2. Go to Step Three, page 16.

*The alphanumeric characters after Canon xxxx series is the machine's Bonjour service name or MAC address

Step Two

2-B (OS X v. 10.4.11)

1. When the **Printer List** window appears, click **Add**.

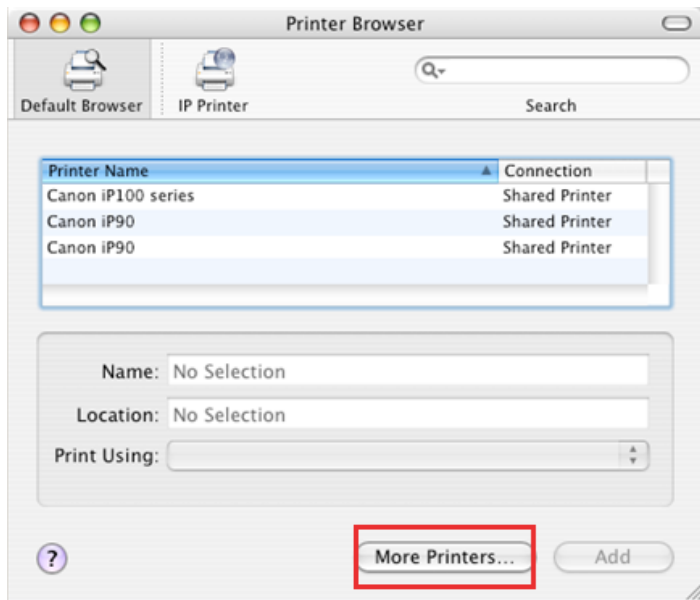


Registering the Printer & Scanner

Step Two

2-B

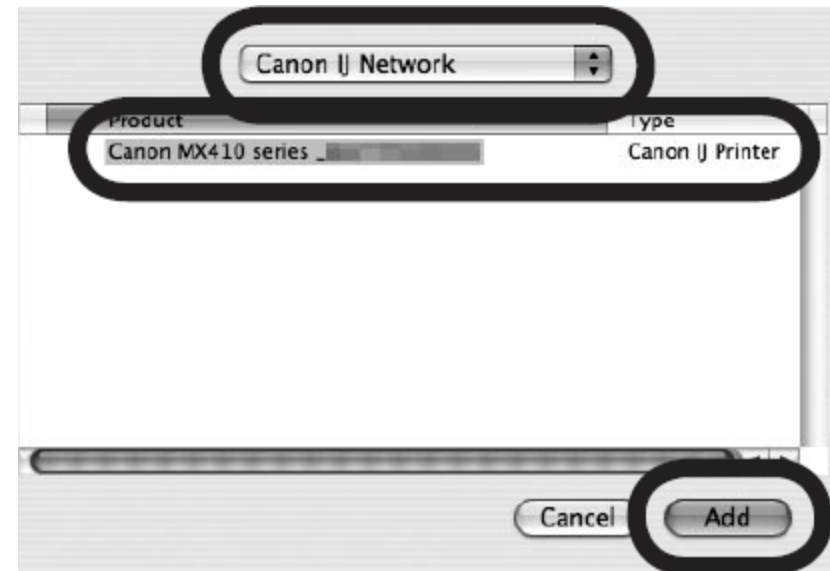
2. Click **More Printers** in the **Printer Browser** window.



Step Two

2-B

3. Select **Canon IJ Network** in the pop-up menu, select **Canon MXxxx series** in the list of printers, then click **Add**. *xxx refers to the model number. **MX410 series** shown in example, below



Registering the Printer & Scanner

Step Two

2-B

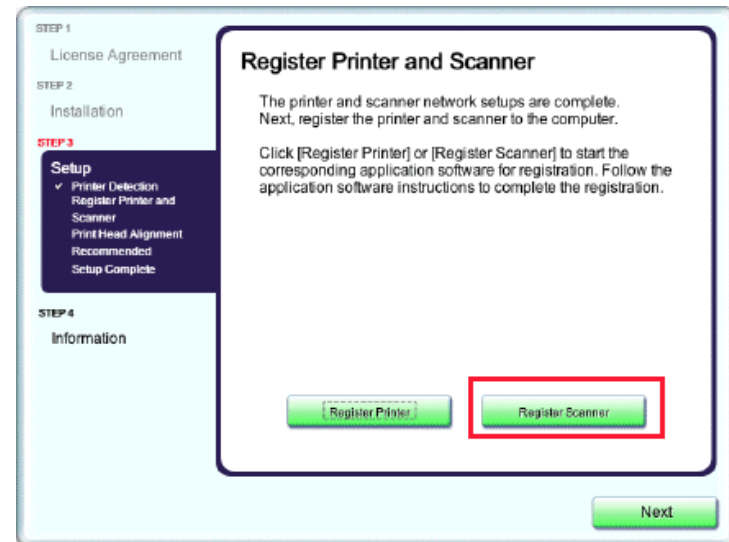
4. Make sure that the **Canon MXxxx series** is added to the list of printers.



*xxx refers to the model number. MX410 series shown in above example.

Step Three

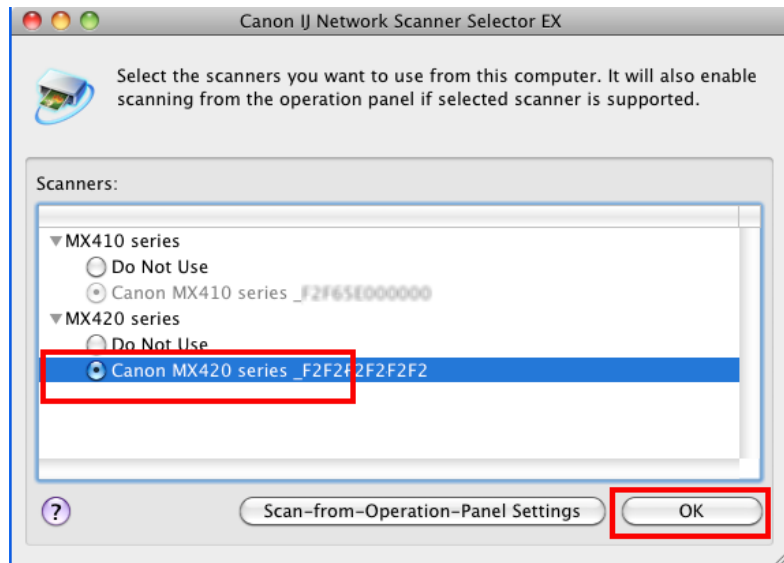
- When the **Register Printer and Scanner** screen appears, click **Register Scanner**.



Registering the Printer & Scanner

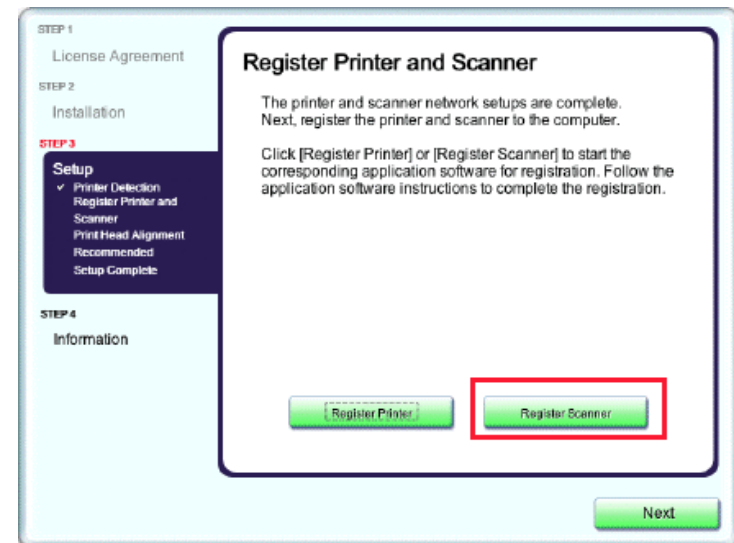
Step Four

Select **Canon MX410 series** on the **Canon IJ Network Scanner Selector EX** screen, then click **OK**



Step Five

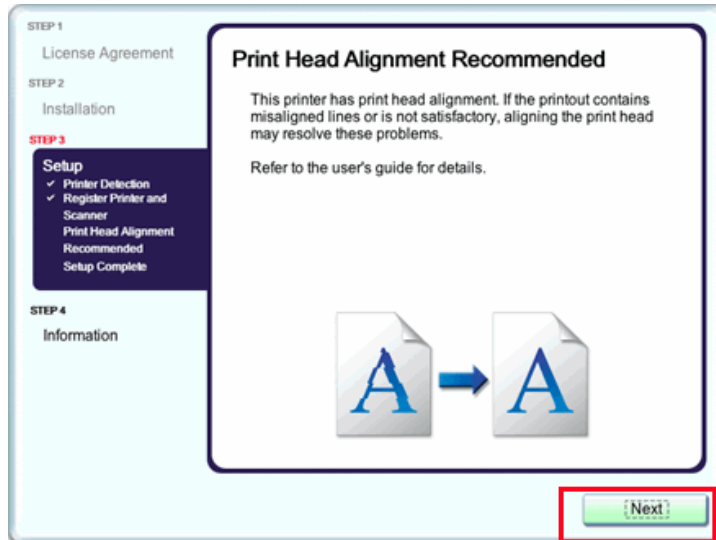
Click **Next** on the **Register Printer and Scanner** screen.



Registering the Printer & Scanner

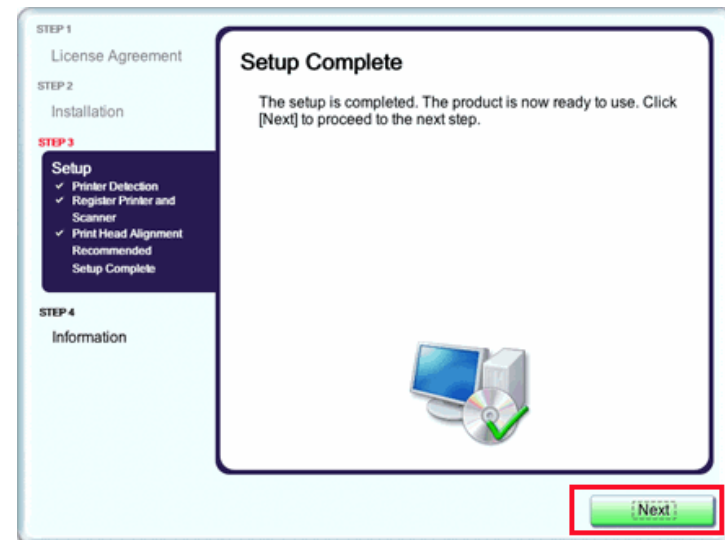
Step Six

Click **Next** on the **Print Head Alignment Recommended** screen.



Step Seven

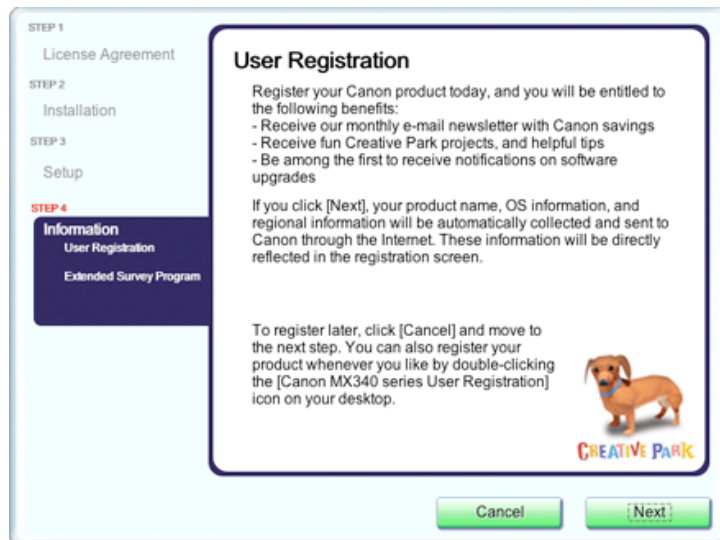
Click **Next** on the **Register Printer and Scanner** screen.



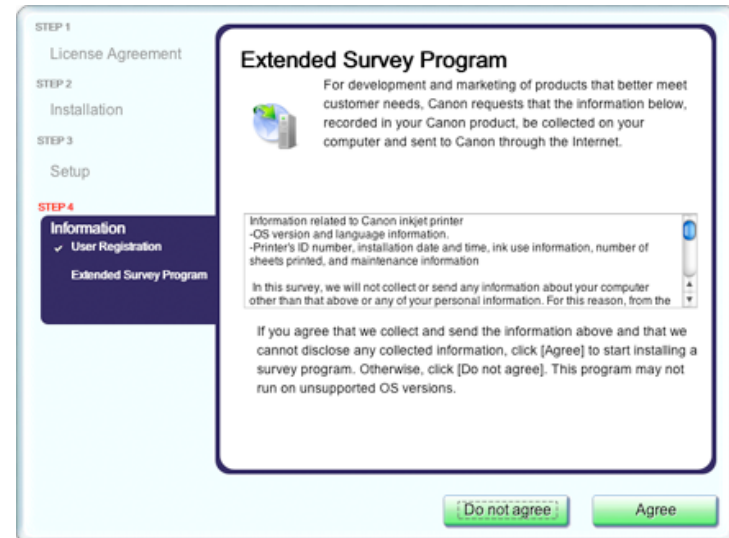
Registering the Printer & Scanner

Step Eight

If the **User Registration** screen appears, read the information and click **Next** or **Cancel**.



If the **Extended Survey Program** screen appears: If you can agree to Extended Survey Program, click **Agree**. If you click **Do not agree**, the Extended Survey Program will not be installed. (This has no effect on the machine's functionality.).



Registering the Printer & Scanner

Step Nine

Click **Exit**. Setup is complete



*It is necessary to restart the computer before scanning using the Operation Panel on the machine for the first time.