



Setup for Wireless Printing on iOS Phones  
and Tablets  
Using Canon PRINT / Inkjet SELPHY app

PIXMA MG7720



## Set Up The Printer For Use On A Wireless Network Using The Canon PRINT Inkjet/SELPHY App For iOS Smartphones And Tablets

You can use the Canon PRINT Inkjet / SELPHY app to easily set up your PIXMA MG7720 printer to the wireless network. The app itself can be used for scanning and printing from your iOS device and for making copy settings.

Prior to setup you will need to have the Canon PRINT Inkjet / SELPHY app installed on your iPad tablet or iPhone ([Get the Application](#)) and power on the printer.

Steps to complete the setup along with screen shots are shown on the pages that follow.

### **Notes on Network Connection**

- The configuration, router functions, setup procedures and security settings of the network device vary depending on your system environment. For details, refer to your device's instruction manual or contact its manufacturer.
- In an office setup, consult your network administrator
- If you connect to a network that is not protected with security measures, there is a risk of disclosing data such as your personal information to a third party.

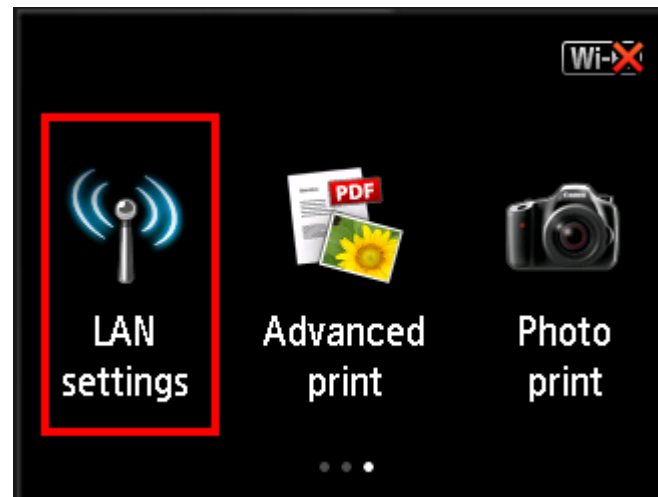
### **IMPORTANT**

- Internet connection may be required during the installation. Connection fees may apply. Consult the internet service provider.



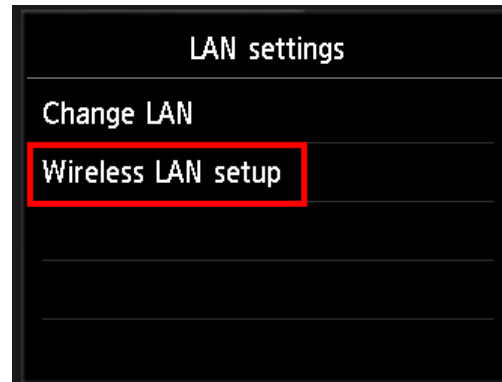
## Start Cableless setup on the Printer

1. If the **HOME** button is lit, tap it.
2. Flick the touchscreen left or right, then tap **LAN settings**.

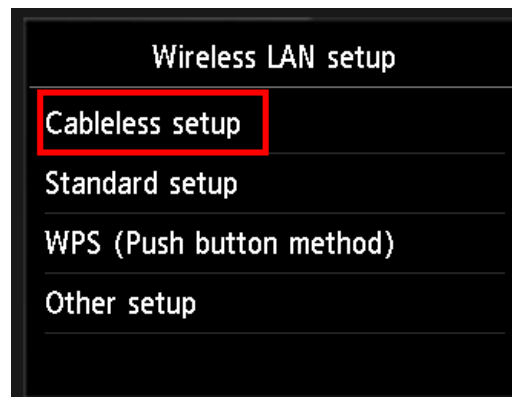




3. Tap **Wireless LAN setup**.



4. Tap **Cableless setup**.



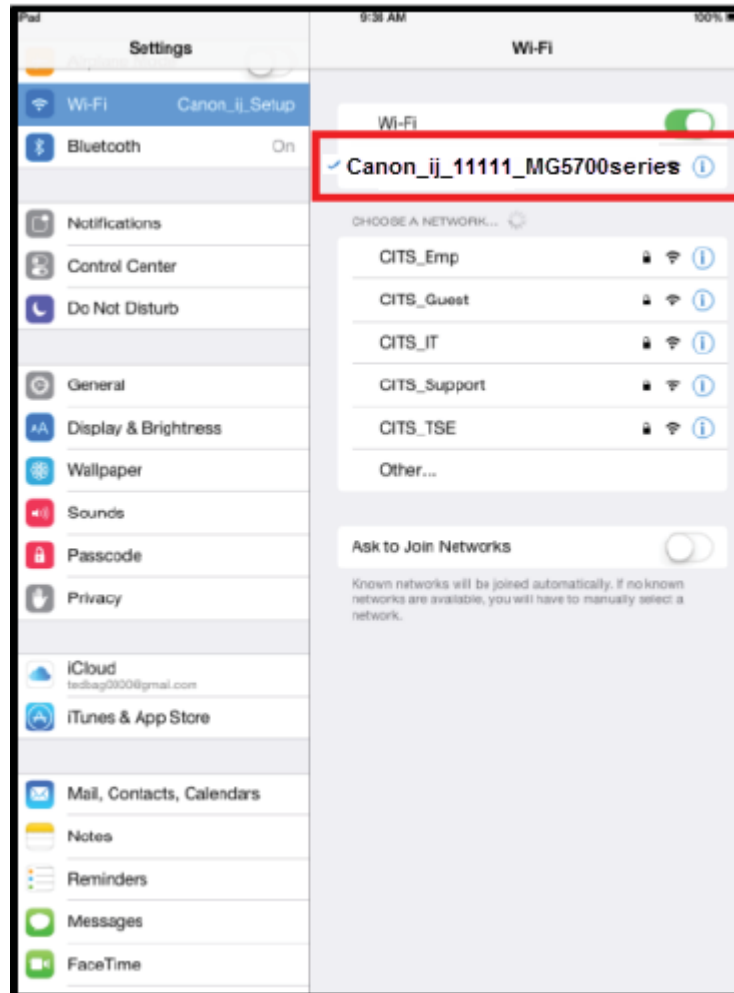


5. Tap **OK**.



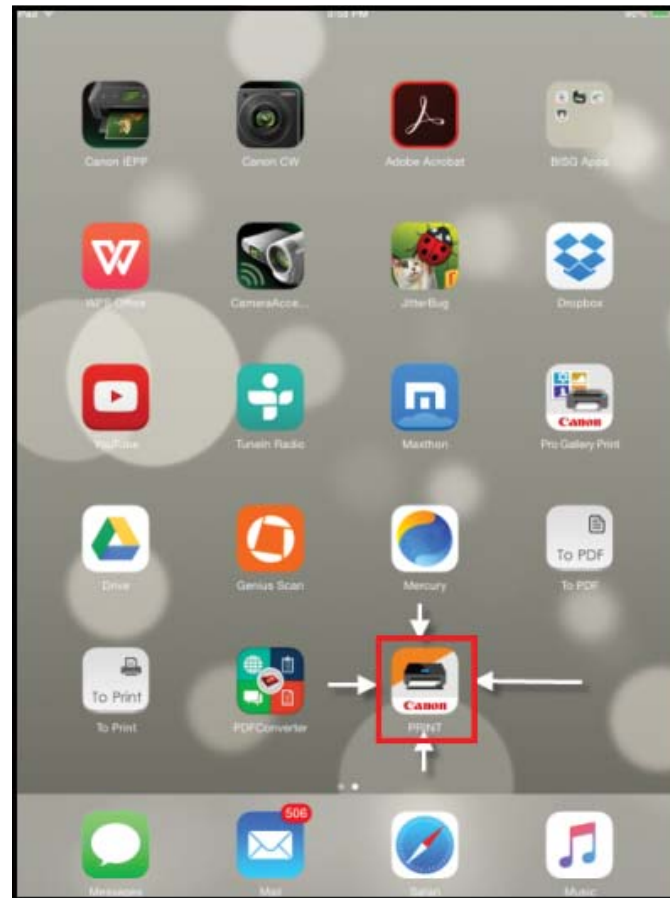


6. On the Mobile device, go to settings and select the network that starts with **Canon\_ij\_** followed by the last 5 digits of the printer's serial number followed by **\_MG5700series**. For example, **Canon\_ij\_11111\_MG5700series**



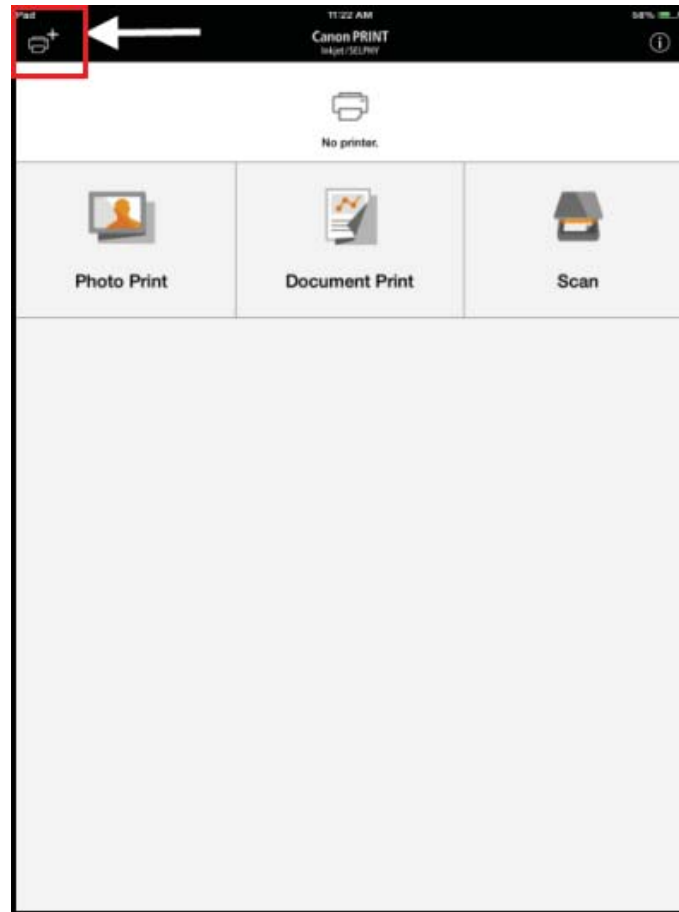


7. On the main screen, tap the **Canon PRINT** icon





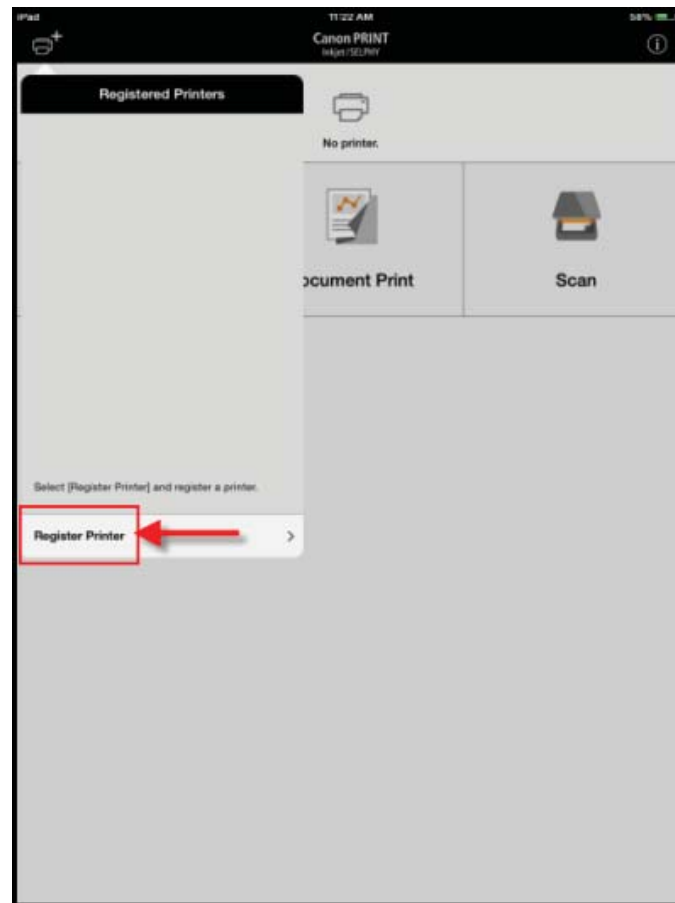
8. Tap the "+" (Plus) icon on the upper left corner of the **Canon PRINT** screen





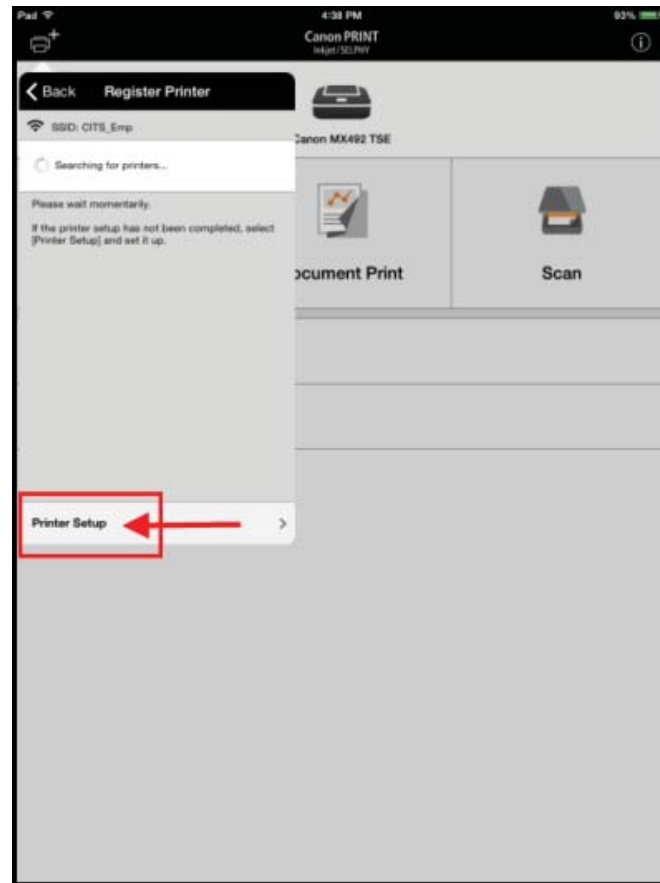


9. Tap **Register Printer**.



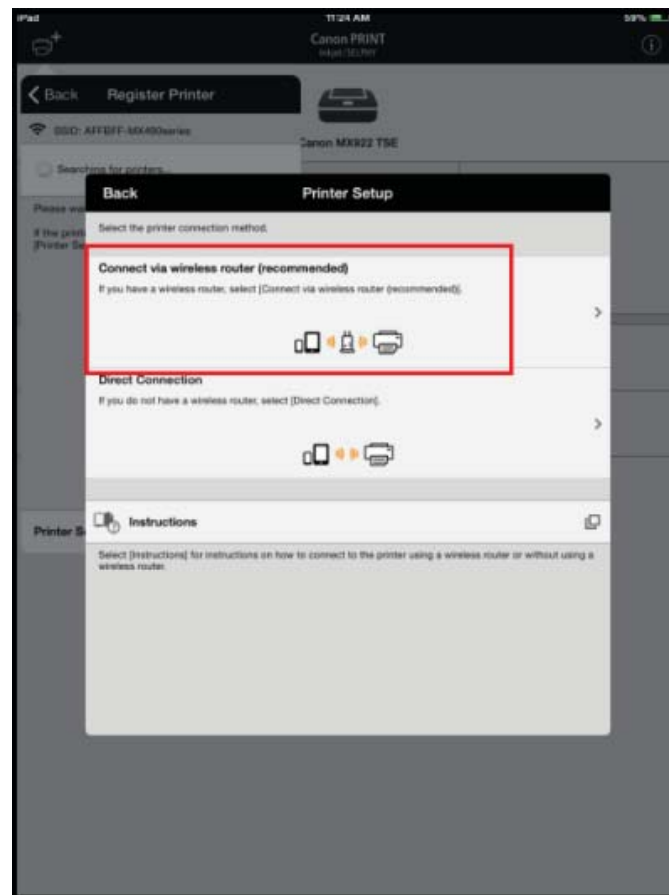


10. Tap **Printer Setup**.

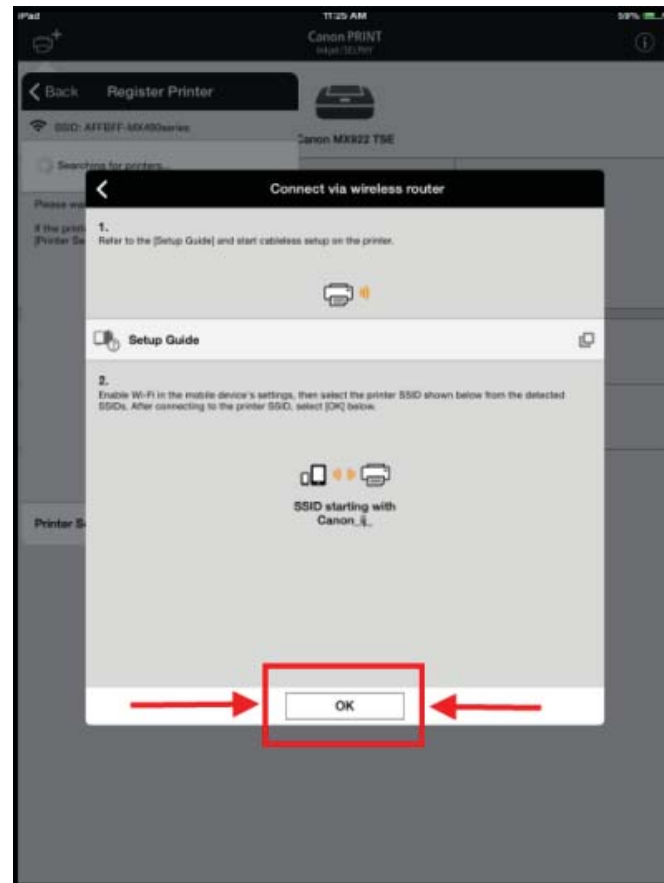




11. Tap **Connect via wireless router (recommended)**.

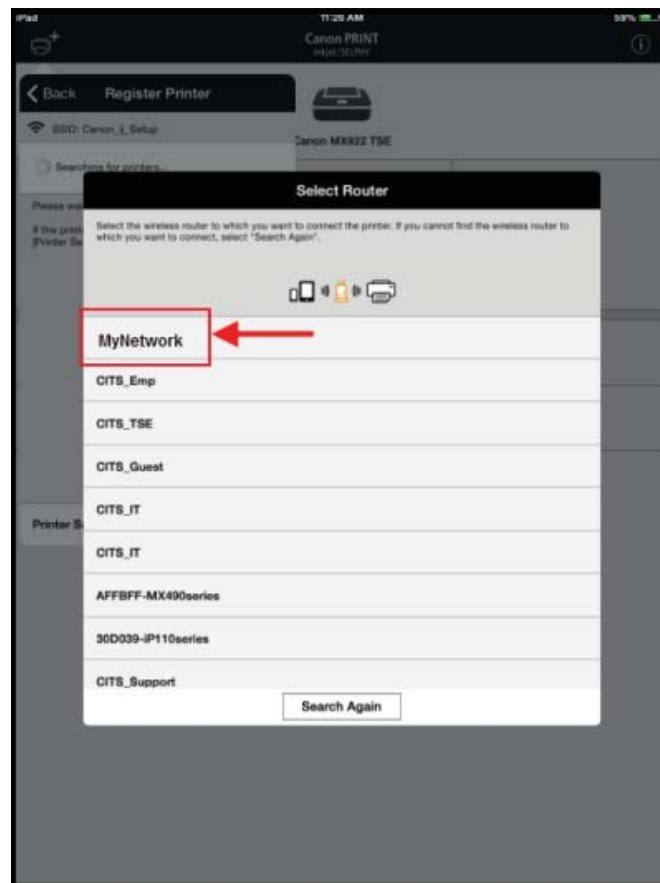


12. Tap OK



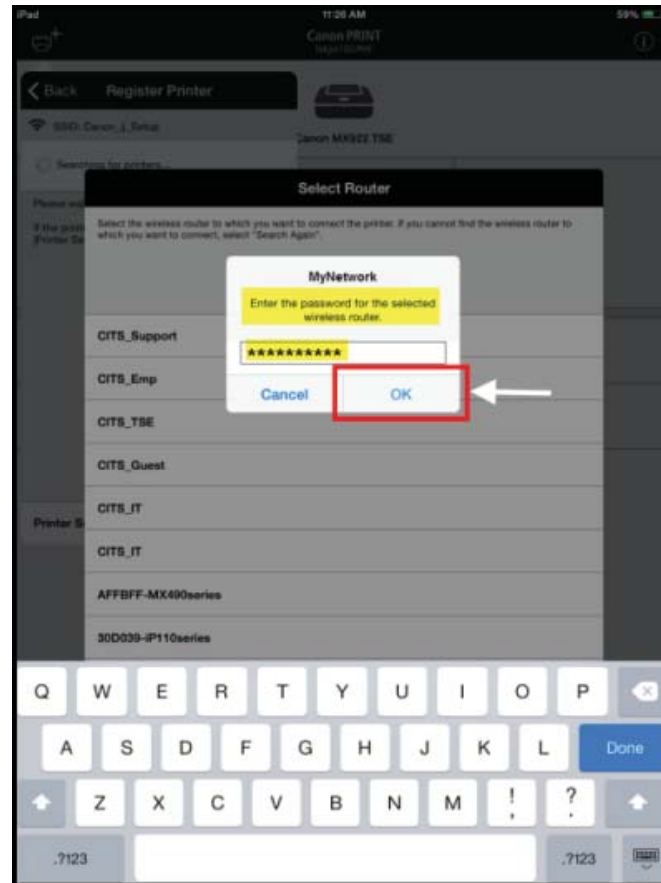


13. Tap the name of your wireless network (MyNetwork is used in the example screen below).



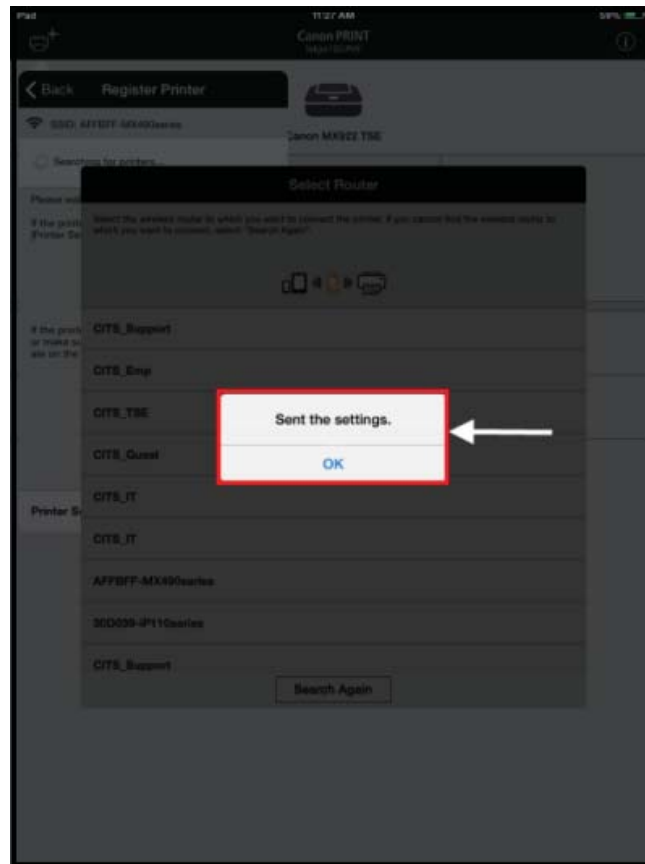


14. Type in the network's password and tap OK





15. Tap **OK** on the **Sent the settings** message.





16. The printer is now connected to the wireless network and is ready for use.

