



Setup for Wireless Printing on Android Phones  
and Tablets  
Using Canon PRINT / Inkjet SELPHY app

PIXMA MG7720



## Set Up The Printer For Use On A Wireless Network Using The Canon PRINT Inkjet/SELPHY App For Android Smartphones And Tablets

You can use the Auto Connect feature of the Canon PRINT Inkjet / SELPHY app to set up your PIXMA MG3620 printer to the wireless network. The app itself can be used for scanning and printing from your Android device and for making copy settings.

Prior to setup you will need to have the Canon PRINT Inkjet / SELPHY app installed on your Android tablet or Smart Phone ([Get the Application](#)) and power on the printer.

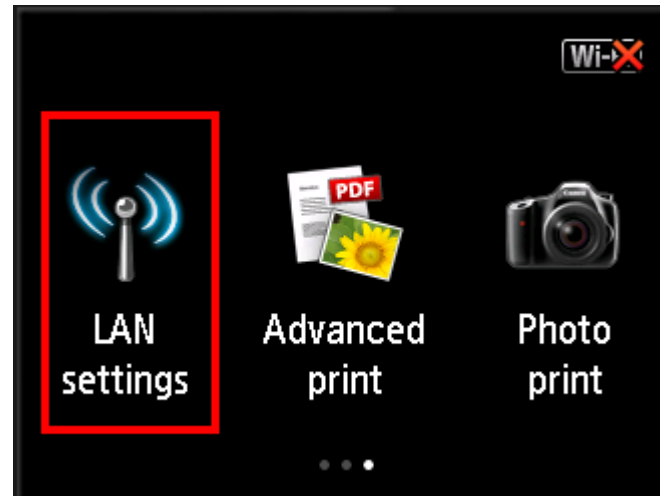
---

Steps to complete the setup along with screen shots are shown on the pages that follow.



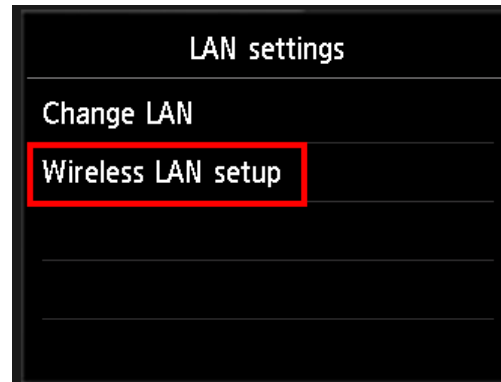
## Start Cableless setup on the Printer

1. If the **HOME** button is lit, tap it.
2. Flick the touchscreen left or right, then tap **LAN settings**.

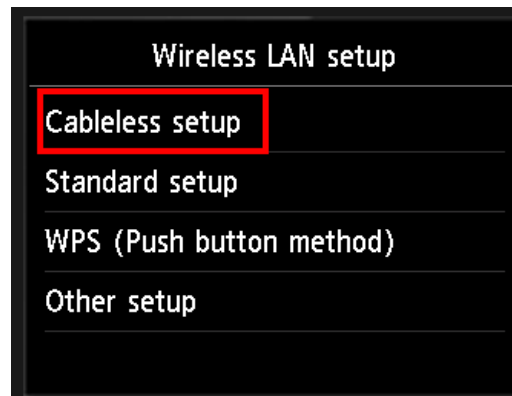




3. Tap **Wireless LAN setup**.



4. Tap **Cableless setup**.



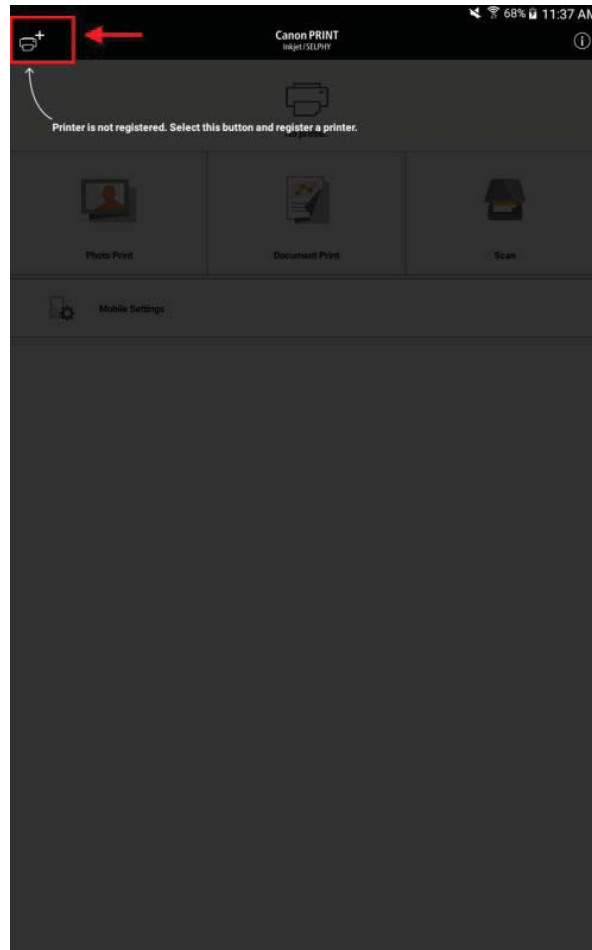


5. Tap OK.



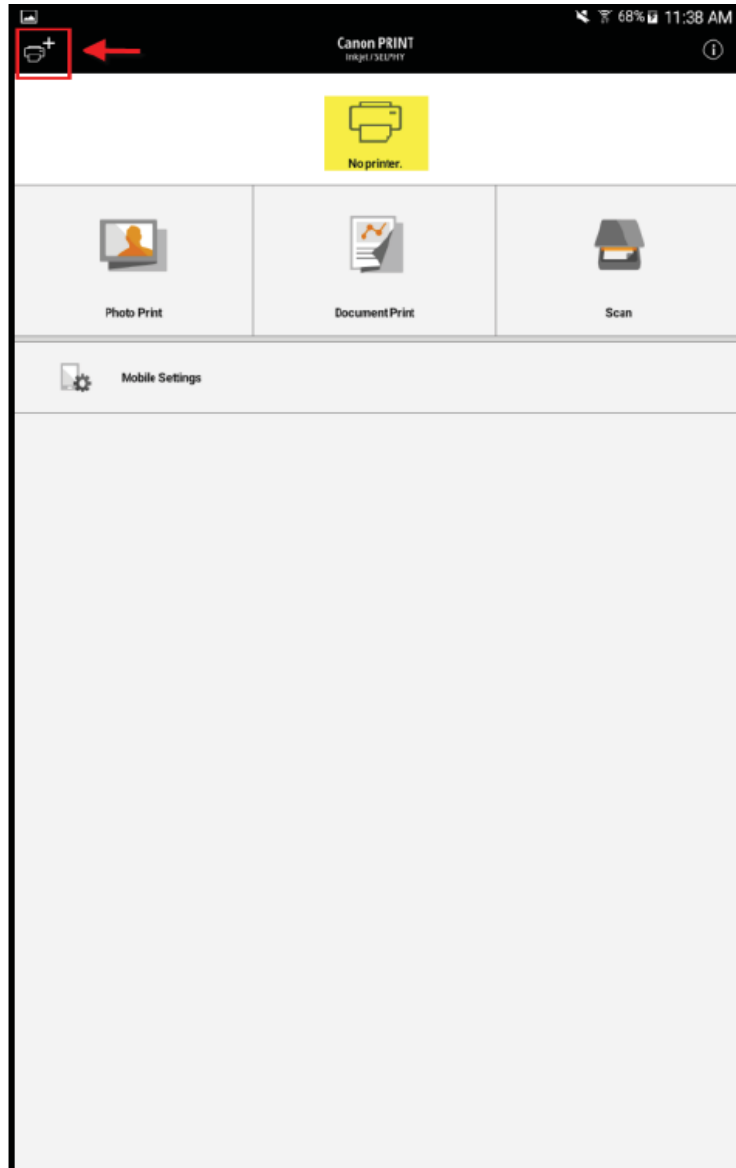


6. Open the Canon PRINT Inkjet / SELPHY app. Click the "+" icon. See screen shot below.



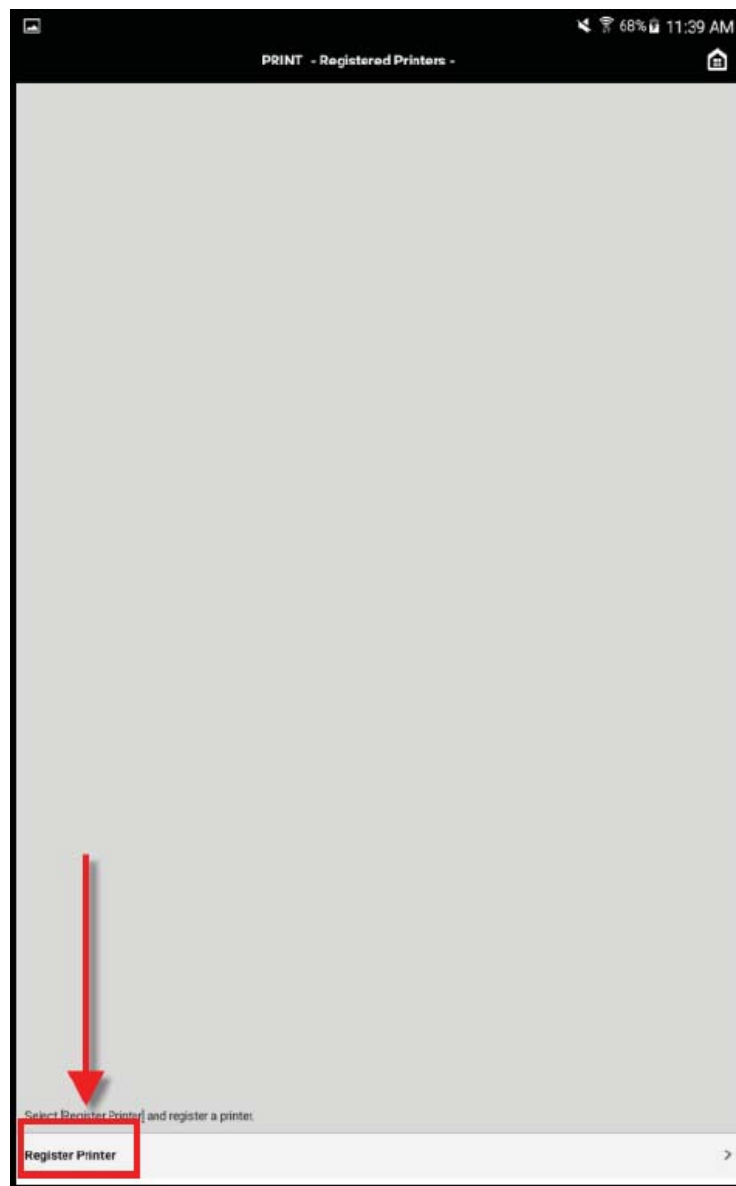


7. Tap the "+"





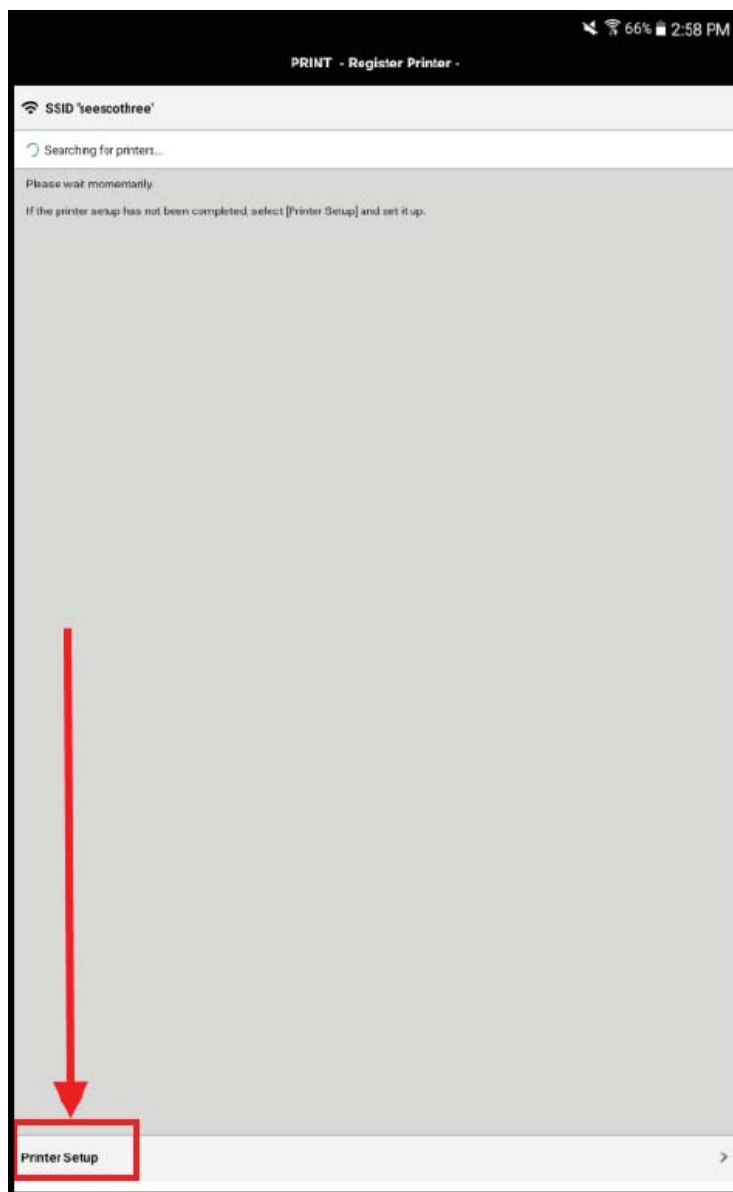
8. Tap Register Printer





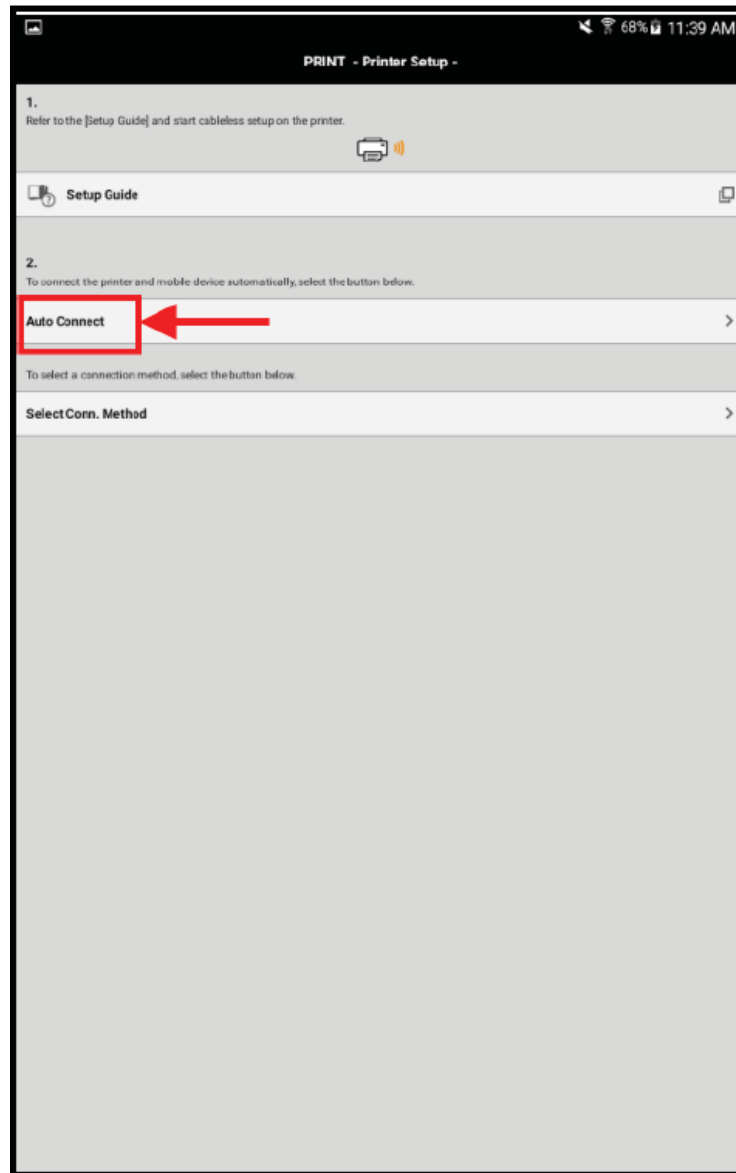


9. Tap Printer Setup.



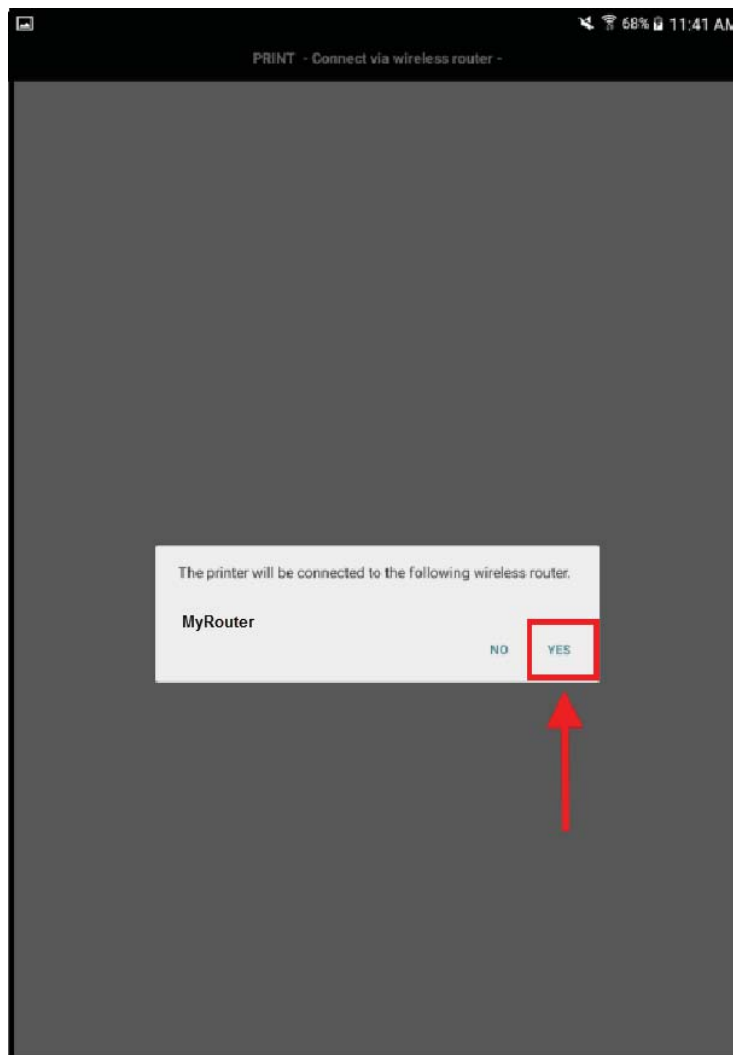


10. Tap Auto Connect.

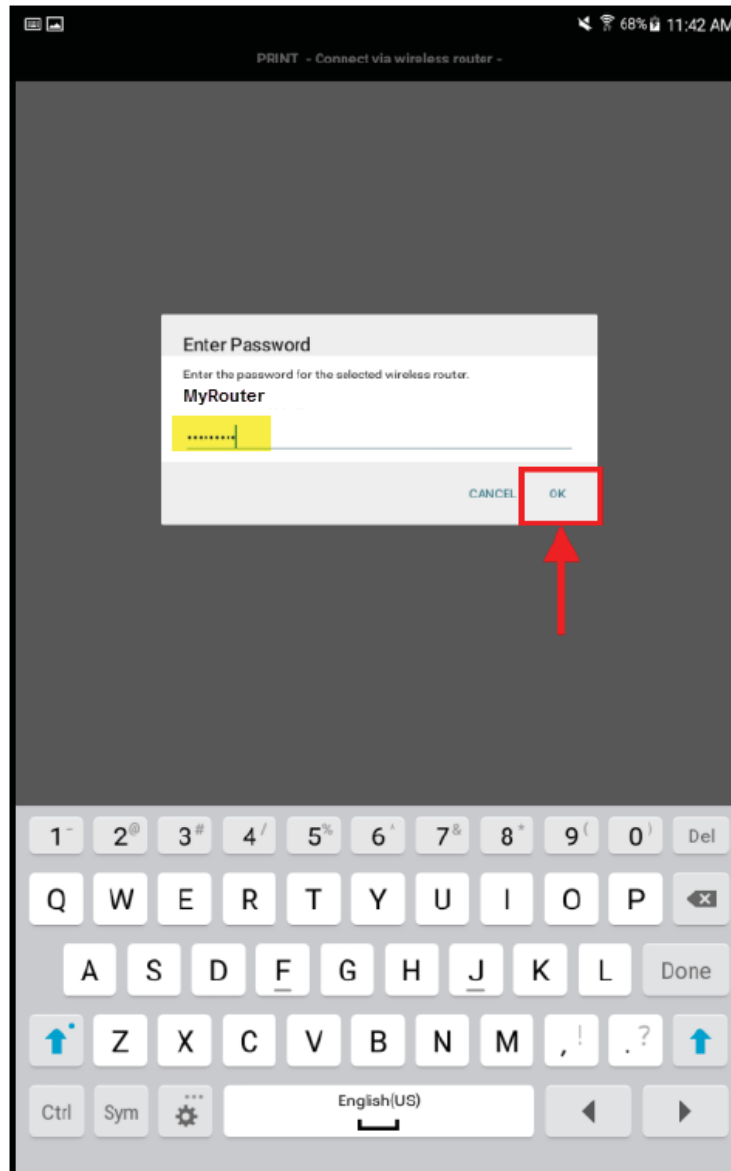




11. Tap Yes.



12. Enter the router's password and tap OK





13. Tap OK on the Sent the settings message.

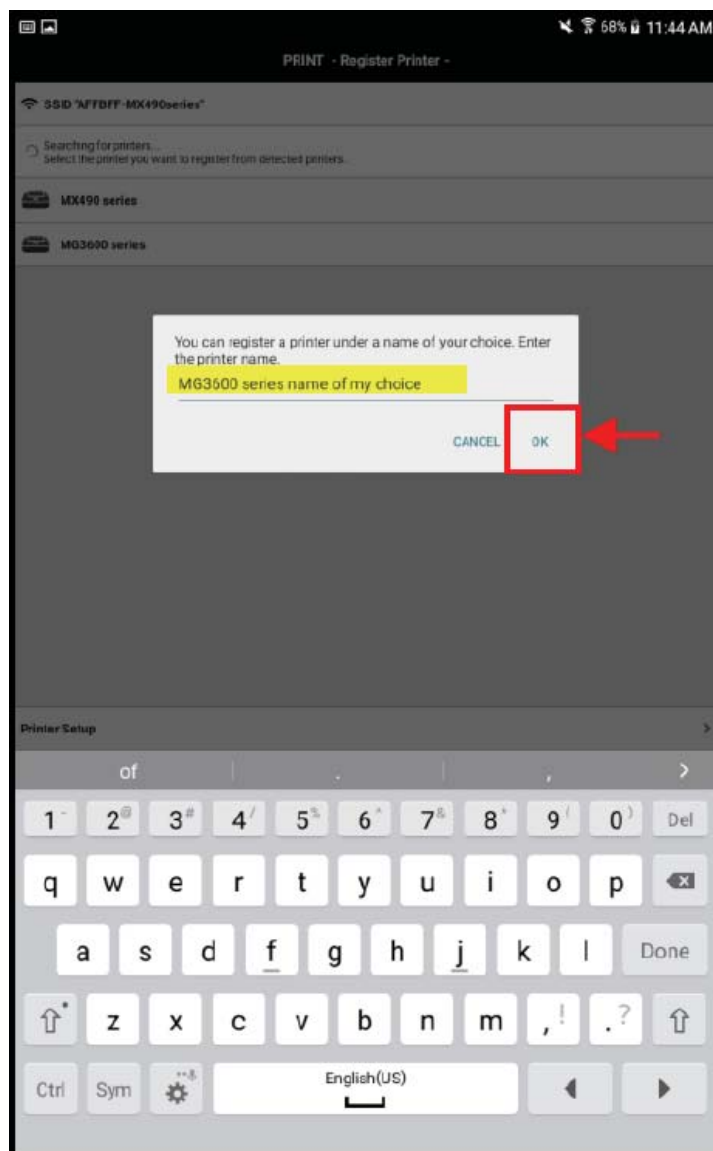




14. Tap the detected printer. "MG3600 series" is used in the example. Name of printer varies by model.



15. Enter a name for the printer and tap OK.





16. The printer is now ready for use.

