

Using the Wireless Setup Assistant

Mac OS

Using the Canon MF/LBP Wireless Setup Assistant

You can check the information for the wireless LAN router or access point (such as SSID or Network Key) by using the Canon Wireless Setup Assistant.

You need to have this information when using the machine via the wireless LAN connection.

Supported operating systems

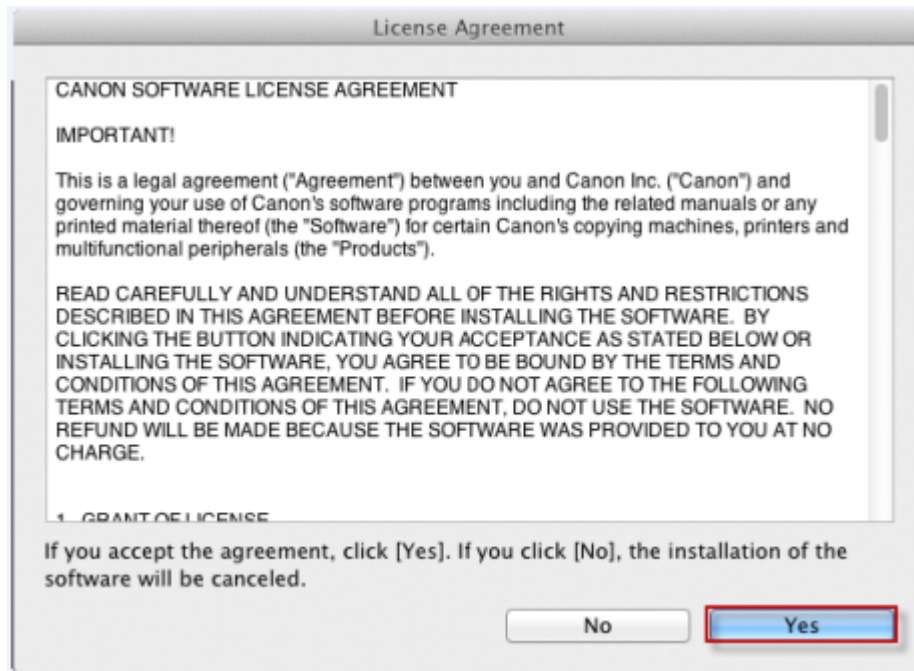
Mac OS X (versions 10.4.11 to 10.7)

Restrictions

- You can use the Canon Wireless Setup Assistant only when the AirPort on the Macintosh computer. This function is not available for third-party external wireless LAN network interfaces.
- Administrators (a member of the Administrators group) use this function.
- You cannot check SSID or Network Key in the network environment where the computer and the access point are connected via wired LAN.

1. Click the [Canon MF/LBP Wireless Setup Assistant] icon.

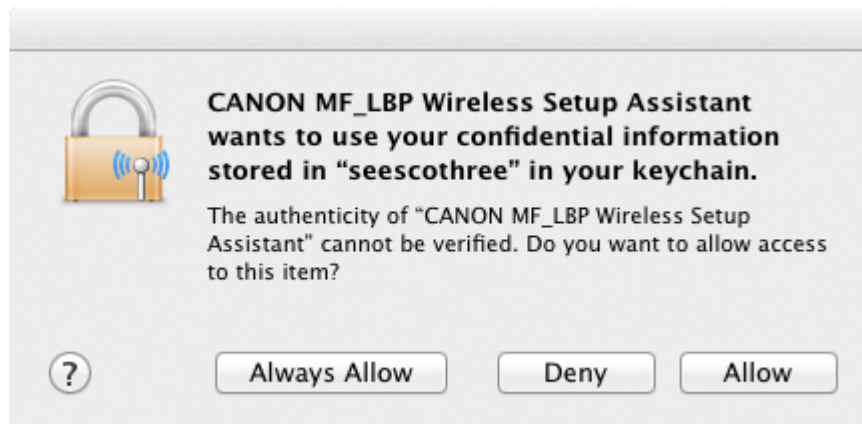
2. Read the License Agreement and click [Yes] to agree if there is no problem.



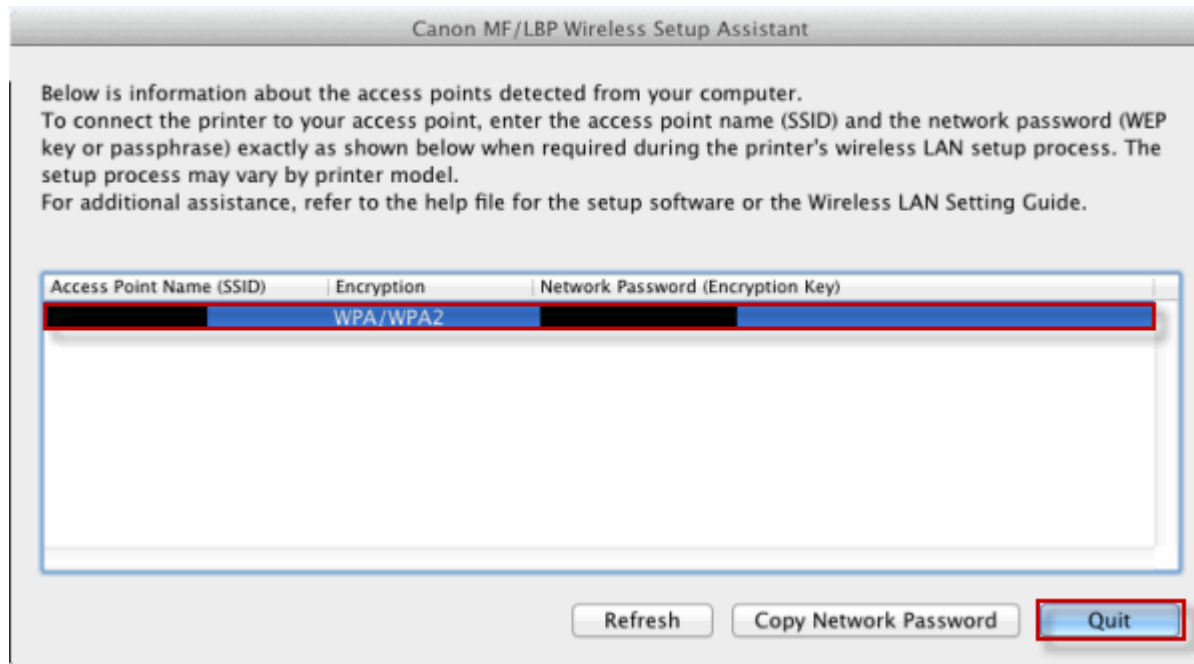
3. The following dialog box will be displayed on the screen. Read through the screen and click [OK].



* When [Confirm Access to Keychain] dialog box appears, click [Allow].



4. The information for the wireless LAN router or access point is displayed



Write down the information and then click [Quit].

If multiple access points are displayed

Read the instruction manuals supplied with the machine, and select the appropriate access point.

If the information for the wireless LAN router or access point is not displayed

Click [Refresh].

When information is not displayed even after clicking [Refresh], check that the settings for the computer and wireless LAN or access point are complete.