



Installing Your Multifunction to Your Network for the First Time

PIXMA MG7120 – Standard setup

Windows OS

Installing Your Multifunction to Your Network for the First Time

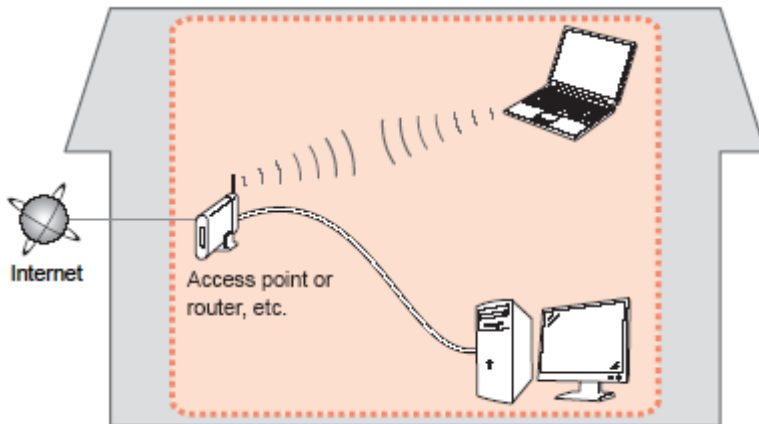
**PIXMA MG7120
Windows OS**

Preparing to Connect My Multifunction to My Network	3
Network Requirements	3
Notes on Wireless Connection	4
Installing the Drivers & Software	5

Preparing to Connect the Multifunction To the Network

Network Requirements

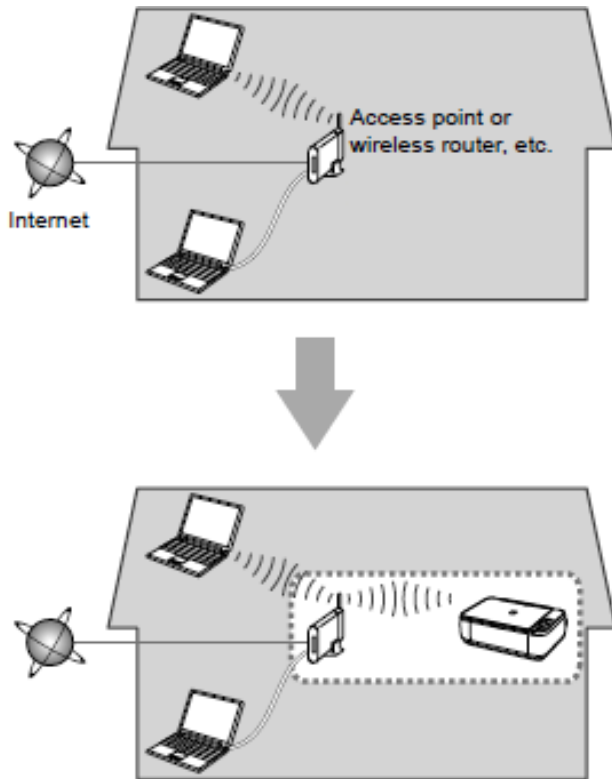
Before connecting the machine to the network, make sure that configuration of the computer and access point or router is complete, and that the computer is connected to the network.



Wireless Connection

Before connecting the machine to the network, the computer needs to be connected to the network. Make sure that configuration of the computer and access point or router is complete.

Preparing to Connect the Multifunction To the Network



An "Ad-hoc connection," which establishes a direct connection to the computer over a wireless connection without using an access point, is not supported.

Notes on Network Connection

- The configuration, router functions, setup procedures and security settings of the network device vary depending on your system environment. For details, refer to your device's instruction manual or contact its manufacturer.
- In an office setup, consult your network administrator
- If you connect to a network that is not protected with security measures, there is a risk of disclosing data such as your personal information to a third party.
- Place the machine and computer on the same network segment.

Installing the Drivers & Software

Software Installation

To use the machine by connecting it to a computer, software including the drivers needs to be copied (installed) to the computer's hard disk. Installation time varies depending on the computer environment or the number of application software to be installed.

IMPORTANT

- Log on as the administrator (or a member of the Administrators group).
- Quit all running applications before installation.
- Do not switch users during the installation process.
- Internet connection may be required during the installation. Connection fees may apply. Consult the internet service provider.
- It may be necessary to restart your computer during the installation process. Follow the on-screen instructions and do not remove the Setup CD-ROM during restarting. The installation resumes once your computer has restarted.
- If the firewall function of your security software is turned on, a warning message may appear that Canon software is attempting to access the network. If such a warning message appears, set the security software to always allow access.

Installing the Drivers & Software

To set up the PIXMA MG7120 to your wireless network, you must first install the software to your computer.

To begin the setup procedure, insert the Setup CD-ROM into your computer.*



The setup program will start automatically. The setup instructions presented in this document describe the “**Standard Setup**” method. You will need to know your SSID (network name / access point name) and Network Key (password) to successfully use this method to set up your printer with the wireless network.

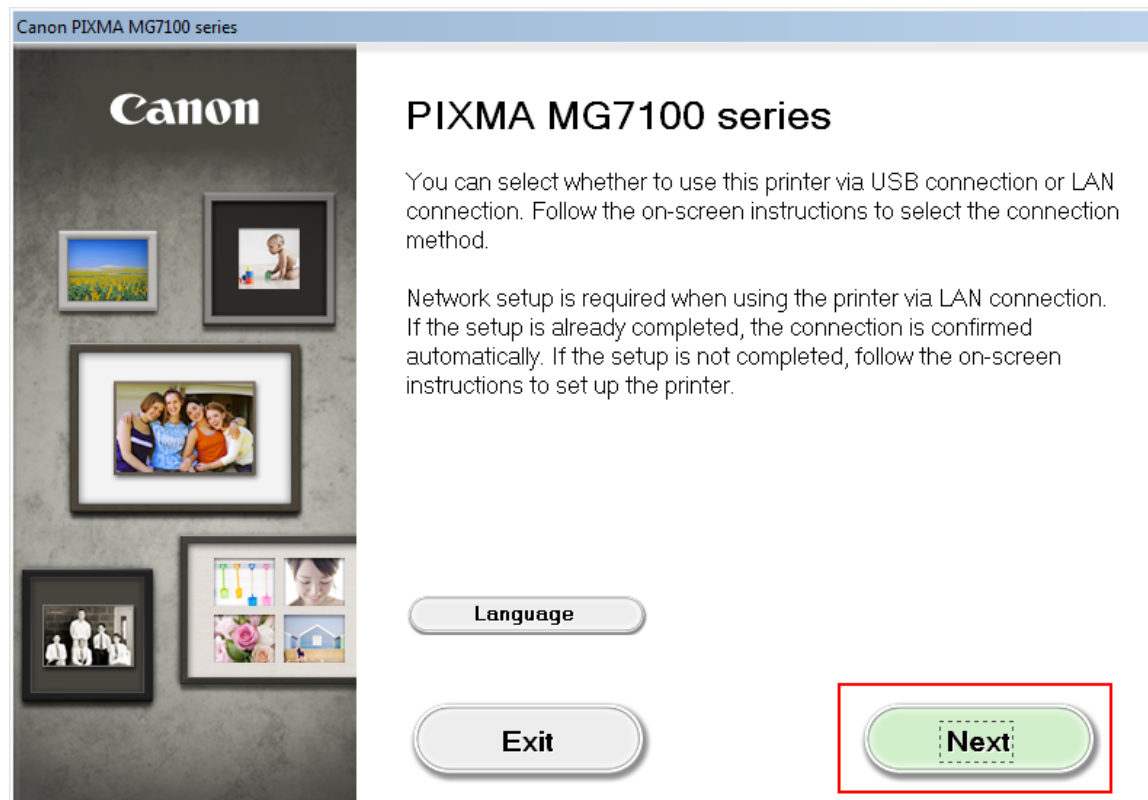
*If you don't have or cannot use the Setup CD-ROM, follow the steps below to start the setup.

- [Download the software](#) (click the link to download)
- Double-click the downloaded .exe file (Win-MG7100-1_0-ucd.exe)

If the **User Account Control** dialog box appears during the setup, click **Yes** or **Continue**.

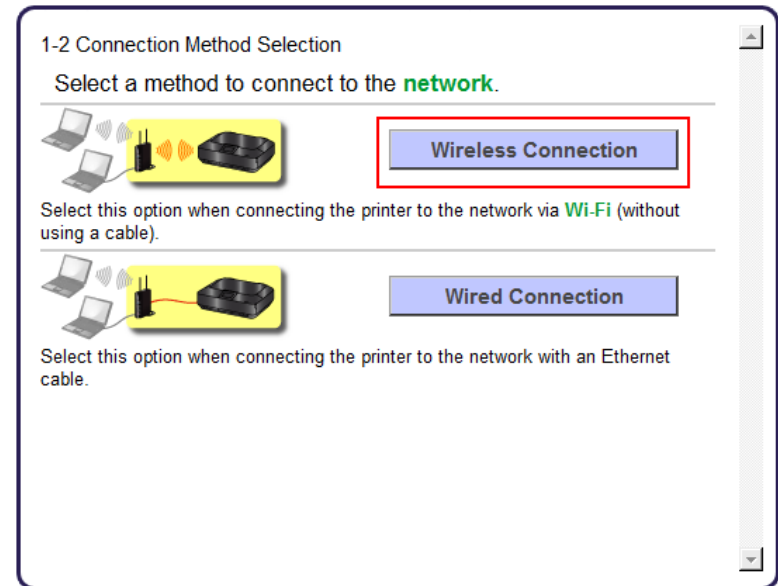
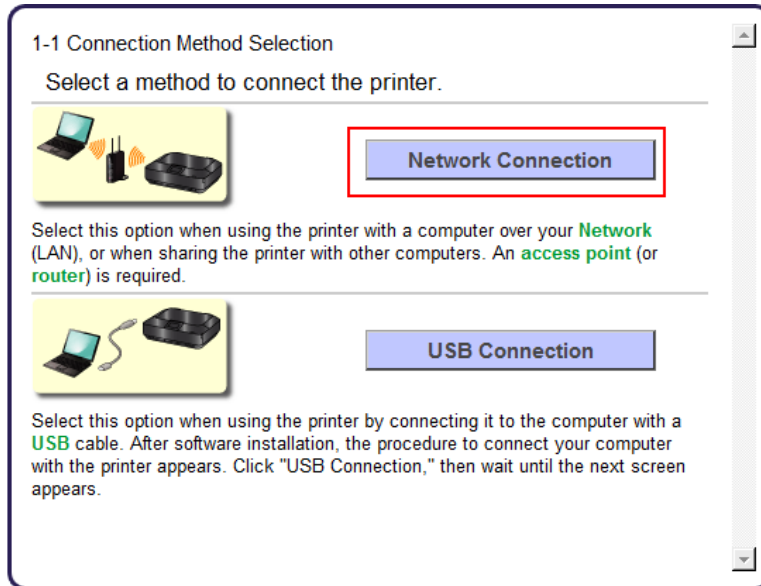
Installing the Drivers & Software

Click **Next** on the initial screen



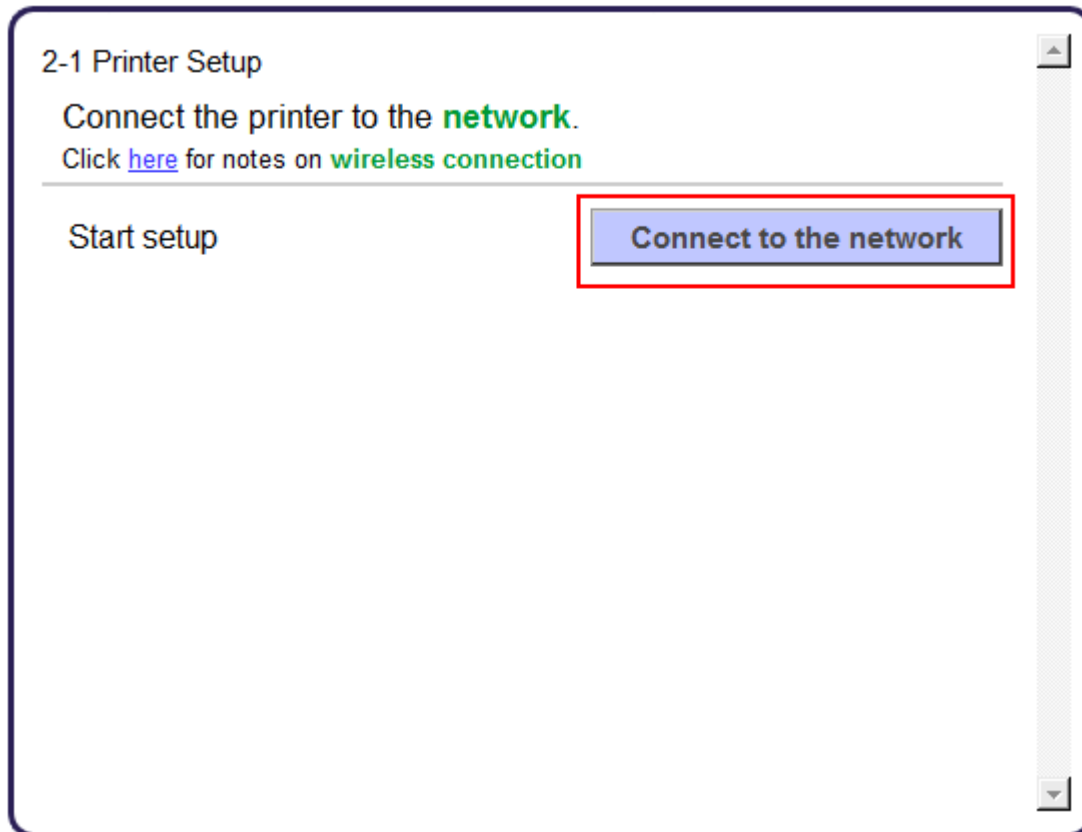
Installing the Drivers & Software

On the **Connection Method Selection** screen (1-1) select **Network Connection**, then select **Wireless Connection** on screen (1-2).



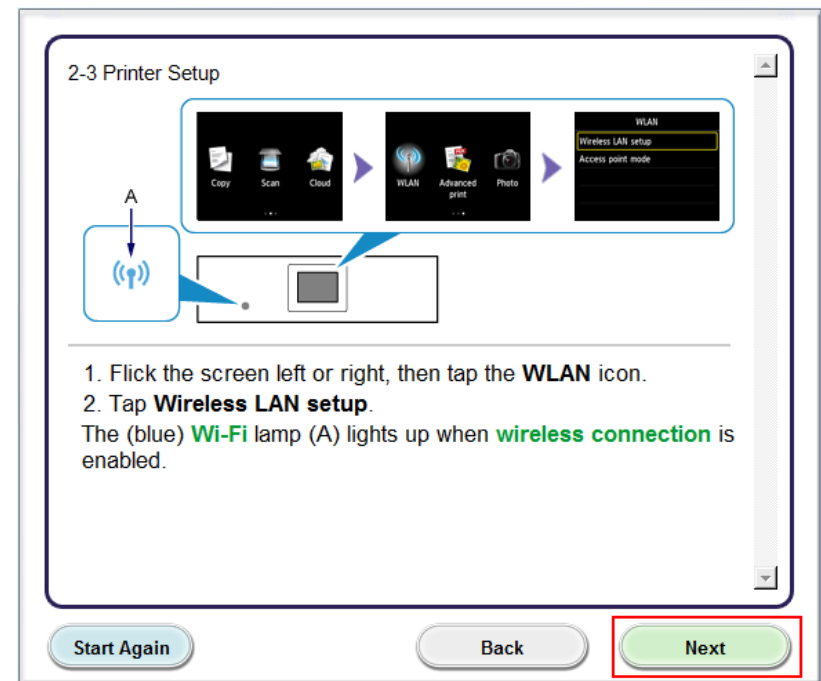
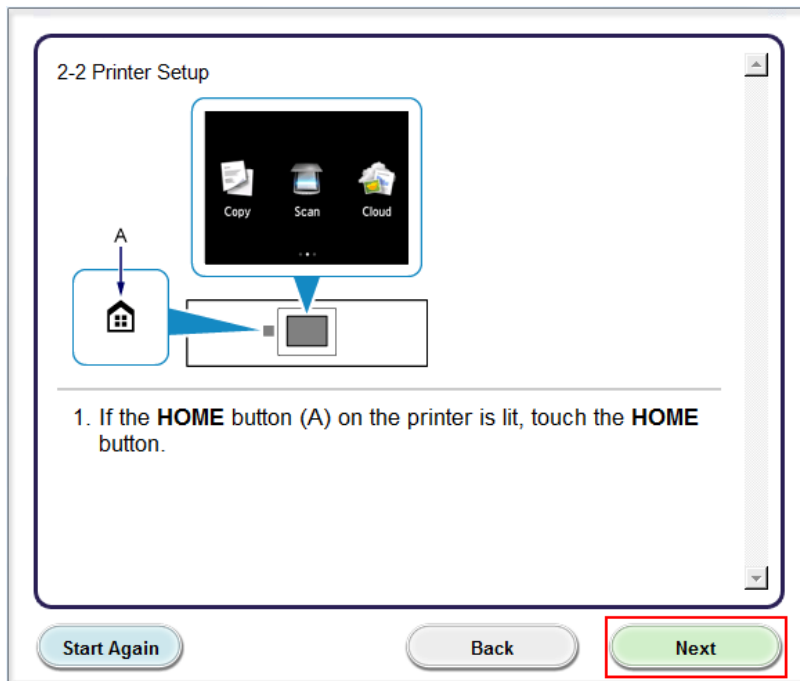
Installing the Drivers & Software

Continue to follow on-screen instructions. Select **Connect to the network** on the **Printer Setup (2-1)** screen.



Installing the Drivers & Software

Continue to follow on-screen instructions. If the **HOME** button is lit, touch the **HOME** button and click **Next**. Then, flick the screen left or right and tap the **WLAN** icon. Then tap **Wireless LAN setup**. Click **Next**.



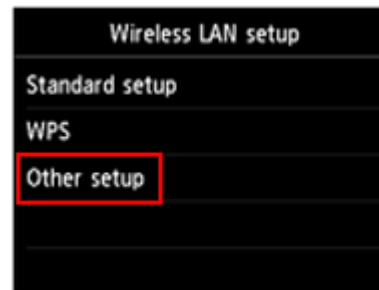
Installing the Drivers & Software

If your printer's display is the same as example **A**, tap **To other connection methods**. The display will then change to the display example **B**.



A

When the display changes to **B** or was **B** to begin with, tap **Other setup**



B

Installing the Drivers & Software

Click **Other Methods** on the **Setup Procedure Selection** screen (3-1).

3-1 Setup Procedure Selection

The printer will automatically search for compatible **access points**.

Click the method below that matches the screen displayed on your printer.

* If the Push Button Method screen is displayed on the printer
When you are unsure if your access point or **router** supports this technology, tap **To other connection methods**.
When the printer screen changes from left to right, click [here](#)
Proceed to the screen for Standard setup.

To start setup, tap [Start setup] on the device.

Start setup

To other connection methods

[Push Button Method](#)

Wireless LAN setup

Standard setup

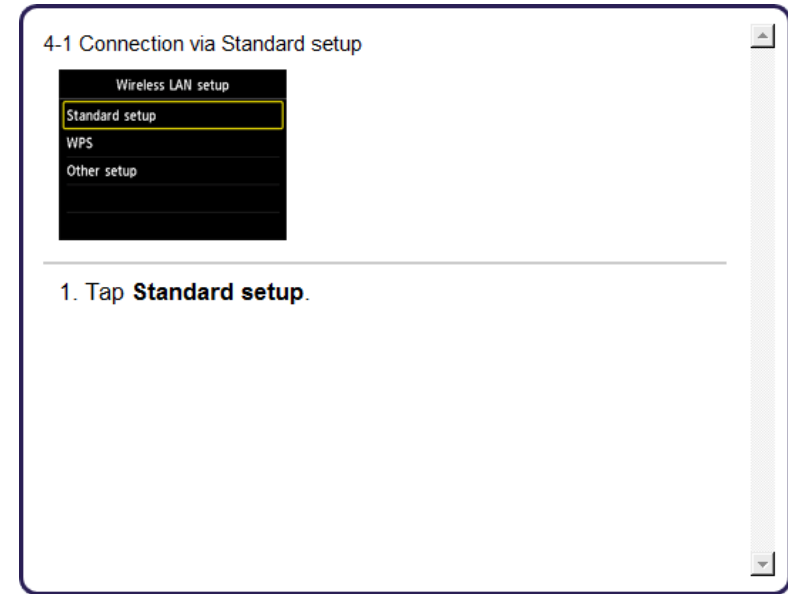
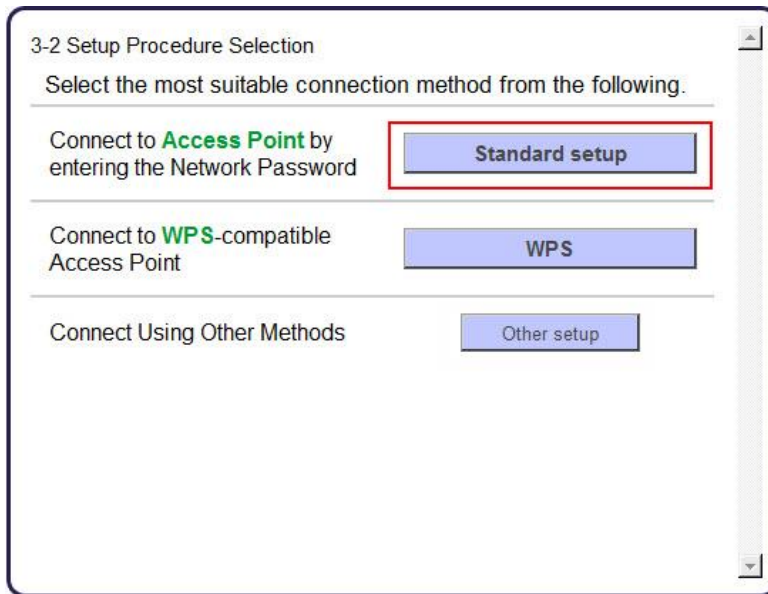
WPS

Other setup

[Other Methods](#)

Installing the Drivers & Software

On the **Setup Procedure Selection** screen (3-2), click **Standard setup** . Tap **Standard setup** on the printer's touch-screen. Click **Next** on the **Connection via Standard setup** screen (4-1).



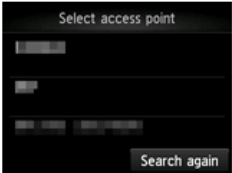
Connecting to the Wireless Network

[<< Previous](#)[Next >>](#)

Follow On-screen instructions. When you get to Step 4-2 and later in Step 4-4 (screens shown below) you will need to know SSID and password information*

Step 4-2

4 -2 Connection via Standard setup



1. Tap your **access point**.
If another screen appears, refer to "Troubleshooting" on the right.


If you don't know your access point name

Select the automatically displayed access point name in the printer screen.

Confirm the access point name (automatic display)

Step 4-4

4 -4 Connection via Standard setup



1. Enter the **network password (WEP key or passphrase)**.
Character entry is case-sensitive so be sure to confirm. Click [here](#) for details on how to enter characters and how to change the character type.

If you don't know the network password for your **access point**

Enter the automatically displayed network password in the printer screen.

2. Tap **Apply**.

Confirm the network password (automatic display)

***Unless you are absolutely certain of this information, please continue to the next page for information on locating / verifying this information before entering on the machine.**

Continue to follow the on-screen instructions. Click **Next** when the **Completion of Connection** screen (4-7) appears.

Connecting to the Wireless Network

[<< Previous](#)[Next >>](#)

If you don't know your Access Point / Router name or SSID*, or the Passphrase or Network key for your wireless network, you can find this information during Standard setup using the Setup CD-ROM or the downloaded file .

*The terms 'SSID' and 'AccessPoint / Router' refer to a name used to identify the specific Access Point or Router. 'Passphrase' and 'Network Key' refer to a password required to prevent unauthorized access to communication.

Look for the **Confirm the access point name (automatic display)** or the **Confirm the network key (automatic display)** buttons during the setup procedure.



Clicking either of these buttons will give the needed information. On a Mac OS X system you may need to click 'Allow' on one or more windows after clicking either of the above buttons. See example below of the Wireless Lan Setup Information window. (appearance varies depending on Operating System). Use the provided information when selecting the Access Point / Router and for entering the Network Key (Steps 4-2 and 4-4 on the [previous page](#)).

Below is information about the access points detected from your computer.

Wireless LAN Setup Information:

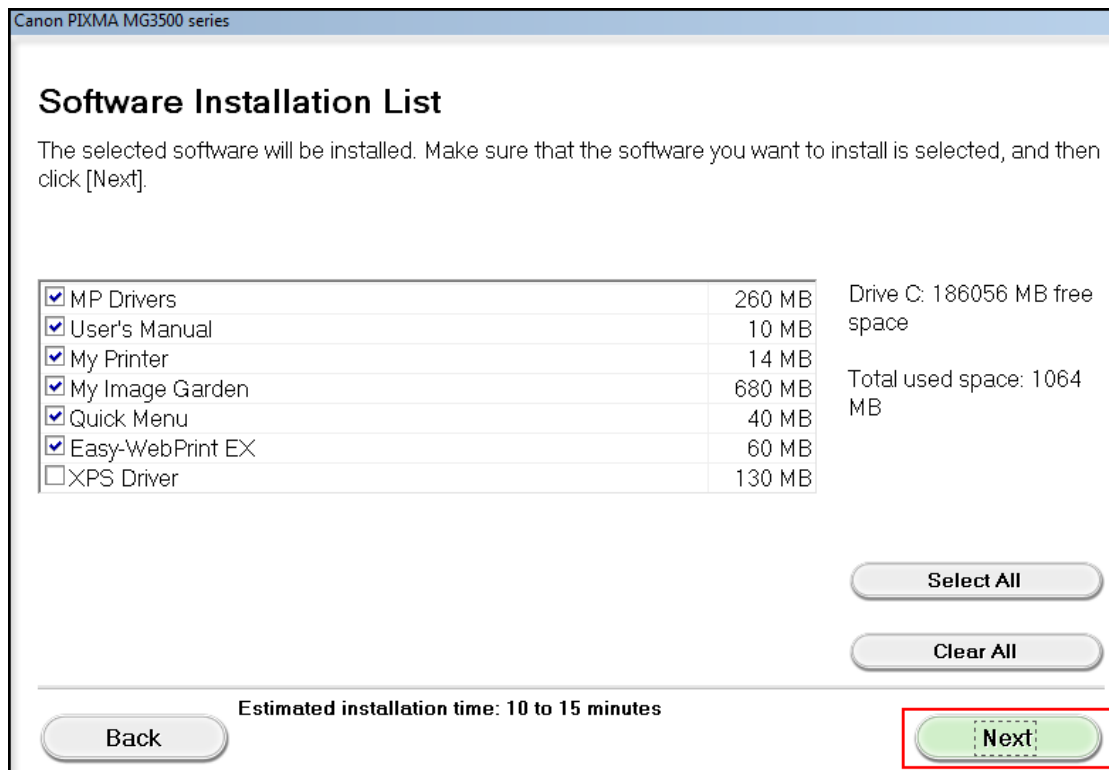
Access Point Na...	Network Key (Encryption Key)
YourNetName	YourPassPhraseorNetKey

OK

Installing the Drivers & Software

Continue following on-screen instructions. On the **Software Installation List**, select *software to install and click **Next**.

***MP Drivers** is required and cannot be deselected. We recommend installing **My Image Garden** and **Quick Menu** to take full advantage of the printer's features.



Canon PIXMA MG3500 series

Software Installation List

The selected software will be installed. Make sure that the software you want to install is selected, and then click [Next].

<input checked="" type="checkbox"/> MP Drivers	260 MB	Drive C: 186056 MB free space Total used space: 1064 MB
<input checked="" type="checkbox"/> User's Manual	10 MB	
<input checked="" type="checkbox"/> My Printer	14 MB	
<input checked="" type="checkbox"/> My Image Garden	680 MB	
<input checked="" type="checkbox"/> Quick Menu	40 MB	
<input checked="" type="checkbox"/> Easy-WebPrint EX	60 MB	
<input type="checkbox"/> XPS Driver	130 MB	

Select All

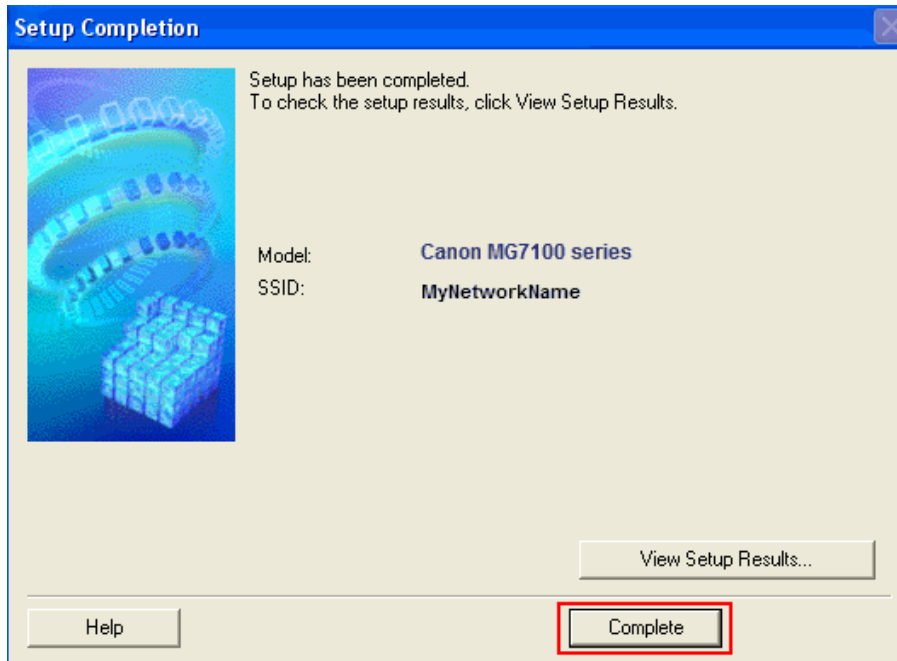
Clear All

Back **Estimated installation time: 10 to 15 minutes** **Next**

Installing the Drivers & Software

Continue following on-screen instructions.

When the **Setup Completion** dialog box appears, click **Complete**.



At this point, setup of the printer and network is complete. Continue to follow any remaining on-screen instructions to finish and exit the setup program.