



# **Installing Your Multifunction to Your Network for the First Time**

**PIXMA MG6420**

**Windows OS**

# Installing Your Multifunction to Your Network for the First Time

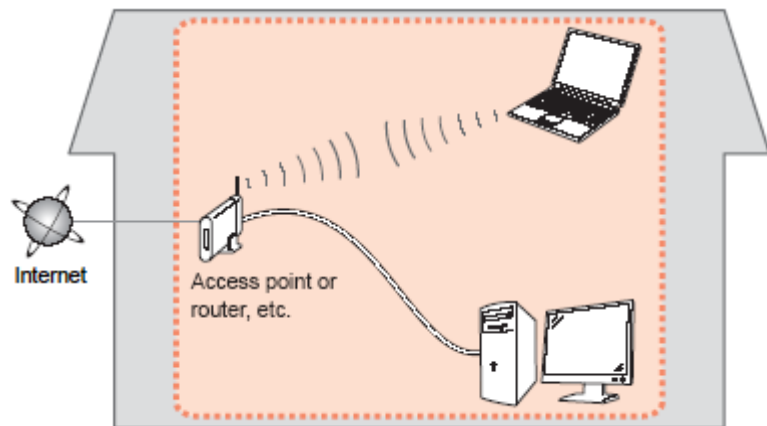
PIXMA MG6420  
Windows OS

<b>Preparing to Connect My Multifunction to My Network</b>	<b>3</b>
Network Requirements	3
Notes on Wireless Connection	4
<b>Installing the Drivers &amp; Software</b>	<b>5</b>

# Preparing to Connect the Multifunction To the Network

## Network Requirements

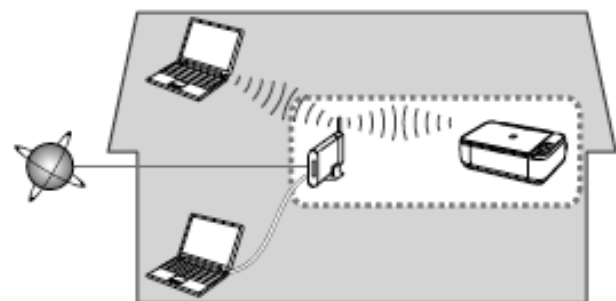
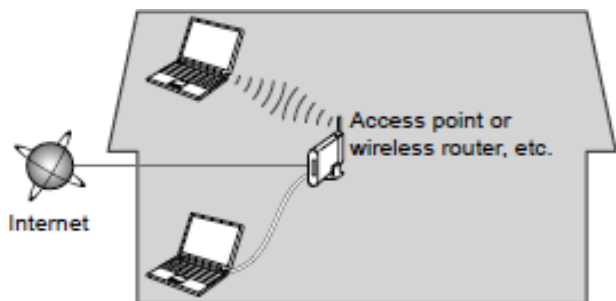
Before connecting the machine to the network, make sure that configuration of the computer and access point or router is complete, and that the computer is connected to the network.



## Wireless Connection

Before connecting the machine to the network, the computer needs to be connected to the network. Make sure that configuration of the computer and access point or router is complete.

# Preparing to Connect the Multifunction To the Network



An "Ad-hoc connection," which establishes a direct connection to the computer over a wireless connection without using an access point, is not supported.

## Notes on Network Connection

- The configuration, router functions, setup procedures and security settings of the network device vary depending on your system environment. For details, refer to your device's instruction manual or contact its manufacturer.
- In an office setup, consult your network administrator
- If you connect to a network that is not protected with security measures, there is a risk of disclosing data such as your personal information to a third party.
- Place the machine and computer on the same network segment.

# Installing the Drivers & Software

## Software Installation

To use the machine by connecting it to a computer, software including the drivers needs to be copied (installed) to the computer's hard disk. Installation time varies depending on the computer environment or the number of application software to be installed.

### **IMPORTANT**

- Log on as the administrator (or a member of the Administrators group).
- Quit all running applications before installation.
- Do not switch users during the installation process.
- Internet connection may be required during the installation. Connection fees may apply. Consult the internet service provider.
- It may be necessary to restart your computer during the installation process. Follow the on-screen instructions and do not remove the Setup CD-ROM during restarting. The installation resumes once your computer has restarted.
- If the firewall function of your security software is turned on, a warning message may appear that Canon software is attempting to access the network. If such a warning message appears, set the security software to always allow access.

# Installing the Drivers & Software

To set up the PIXMA MG6420 to your wireless network, you must first install the software to your computer.

To begin the setup procedure, insert the Setup CD-ROM into your computer.\*



The setup program will start automatically. The setup instructions presented in this document describe the “**Cableless Setup**” method which does not require the need to know the SSID (network name), or network passphrase and does not require the printer to be temporarily connected to the computer with a USB cable.

The **Cableless Setup** is not supported in Windows XP. For Windows XP Users: Use the “[Standard Setup](#)” method. You will need to know your SSID (network name / access point name) and Network Key (password) to successfully use this method to set up your printer with the wireless network.

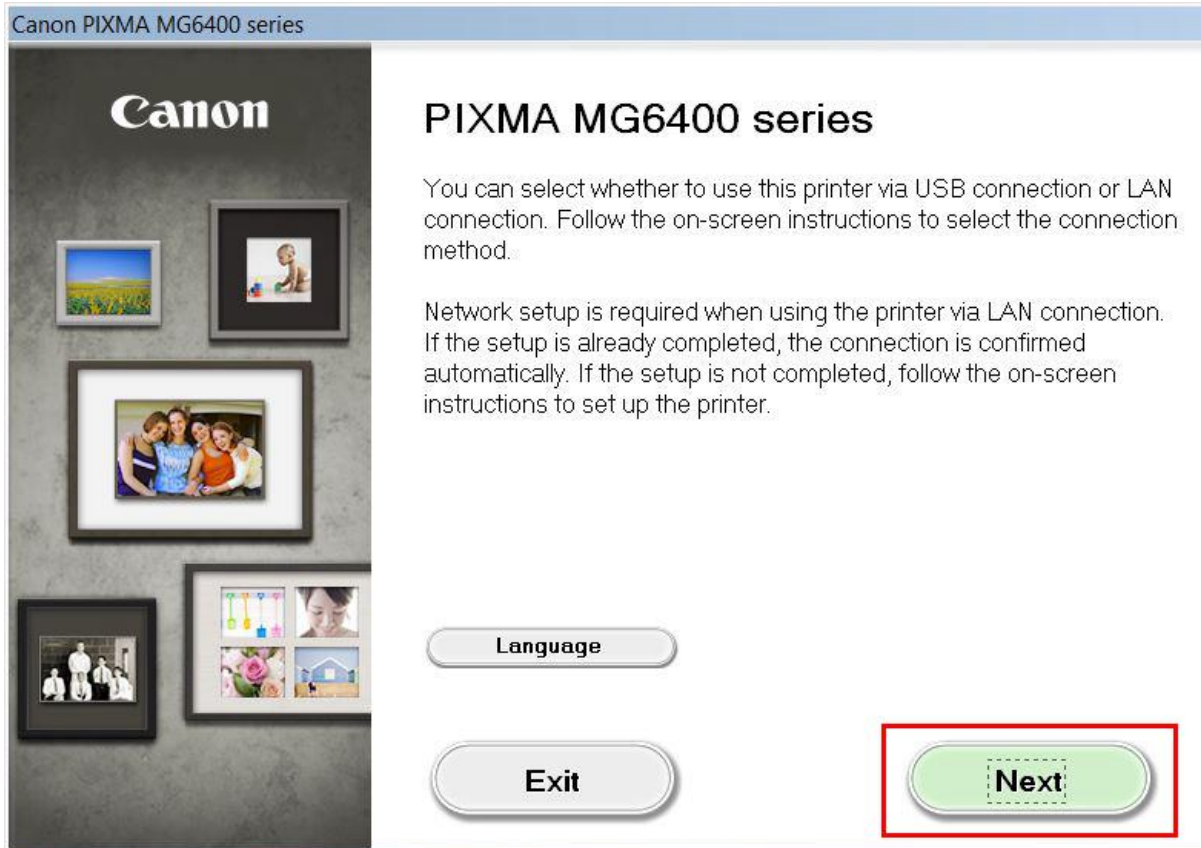
\*If you don't have or cannot use the Setup CD-ROM, follow the steps below to start the setup.

- [Download the software](#) (click the link to download)
- Double-click the downloaded .exe file (Win-MG6400-1\_0-ucd.exe)

If the **User Account Control** dialog box appears during the setup, click **Yes** or **Continue**.

# Installing the Drivers & Software

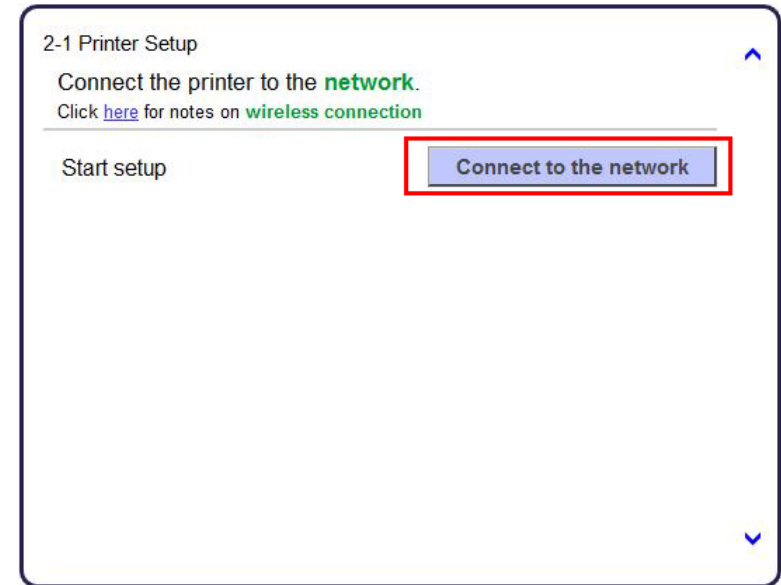
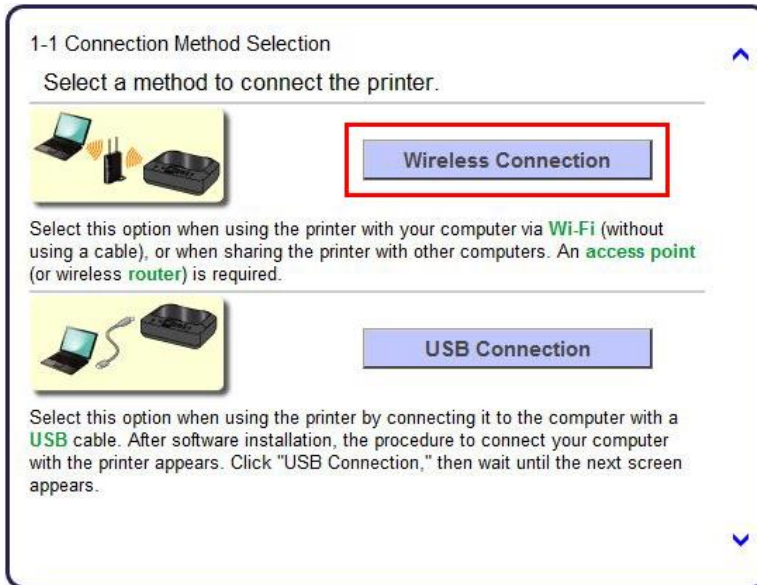
Click **Next** on the initial screen



# Installing the Drivers & Software

On the **Connection Method Selection** screen (1-1) select **Wireless Connection**.

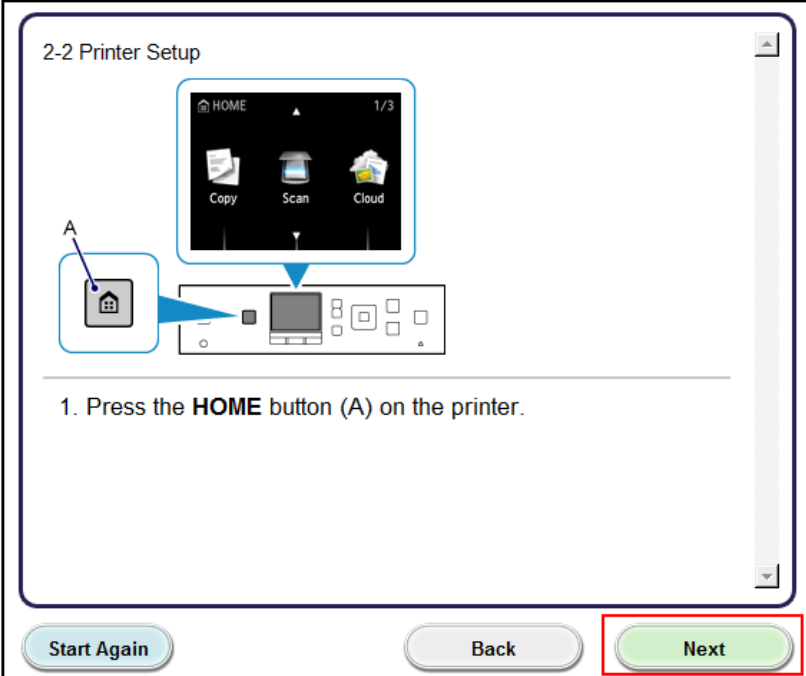
Continue to follow on-screen instructions. Select **Connect to the network** when the **Printer Setup (2-1)** screen appears.





# Installing the Drivers & Software

Continue to follow on-screen instructions.  
Press the **HOME** button on the printer then click **Next**.



2-2 Printer Setup

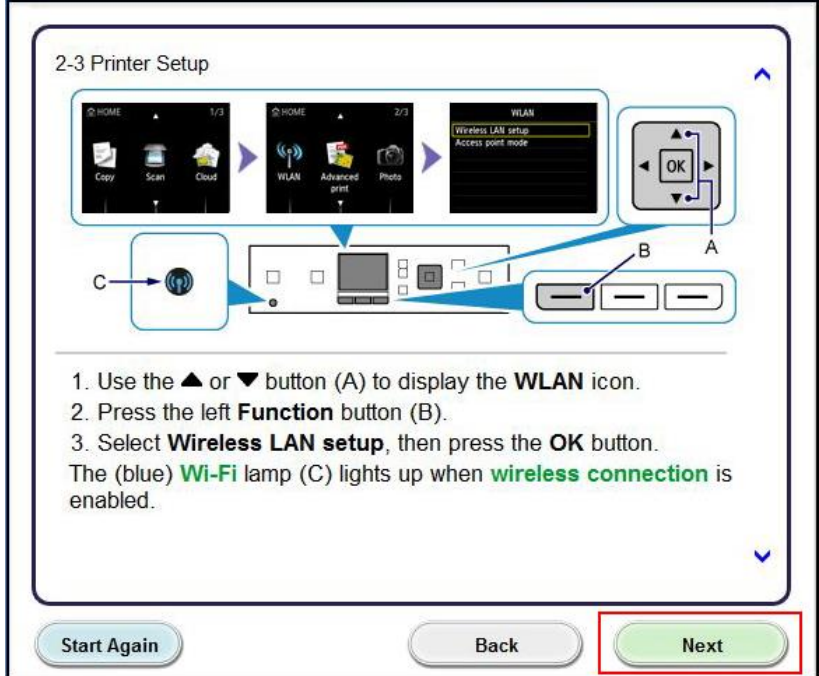
HOME 1/3  
Copy Scan Cloud

A

1. Press the **HOME** button (A) on the printer.

Start Again Back **Next**

Carefully follow the instruction to select the WLAN icon and **Wireless LAN setup** on the printer. Then, click **Next** on the **Printer Setup (2-3)** screen.



2-3 Printer Setup

HOME 1/3 WLAN 2/3 Wireless LAN setup  
Copy Scan Cloud WLAN Advanced print Photo  
Access point mode

C B A

1. Use the ▲ or ▼ button (A) to display the **WLAN** icon.  
2. Press the left **Function** button (B).  
3. Select **Wireless LAN setup**, then press the **OK** button.  
The (blue) **Wi-Fi** lamp (C) lights up when **wireless connection** is enabled.

Start Again Back **Next**

# Installing the Drivers & Software

Continue to follow the on-screen instructions until the **Setup Procedure Selection** screen (3-1) appears. If your printer's LCD screen is the same as that shown above **Push Button Method** on the **Setup Procedure Selection** screen (3-1), press the printer's **Stop** button. Once your printer's screen is the same as that shown above **Other Methods**, click **Other Methods**.

3-1 Setup Procedure Selection

The printer will automatically search for compatible **access points**.

Click the method below that matches the screen displayed on your printer.

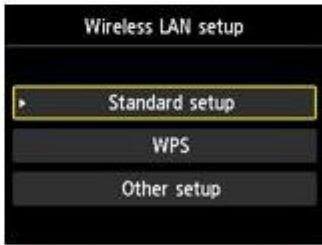
\* If the Push Button Method screen is displayed on the printer  
When you are unsure if your access point or **router** supports this technology, press the **Stop** button.  
When the printer screen changes from left to right, click [here](#)  
Proceed to the screen for Standard setup.



To start setup, press and hold the WPS button on the access point, then press **OK** of the device.

Other setup options

[Push Button Method](#)



Wireless LAN setup

- Standard setup
- WPS
- Other setup

[Other Methods](#)

# Installing the Drivers & Software

Select **Other setup** on **Setup Procedure Selection** screen (3-2) and then **Cableless setup** on **Setup Procedure Selection** screen (3-3).

3-2 Setup Procedure Selection

Select the most suitable connection method from the following.

Connect to **Access Point** by entering the Network Password

Connect to **WPS**-compatible Access Point

Connect Using Other Methods

3-3 Setup Procedure Selection

Connecting to the **Network** by Entering the **Access Point's** Settings Directly on the Printer

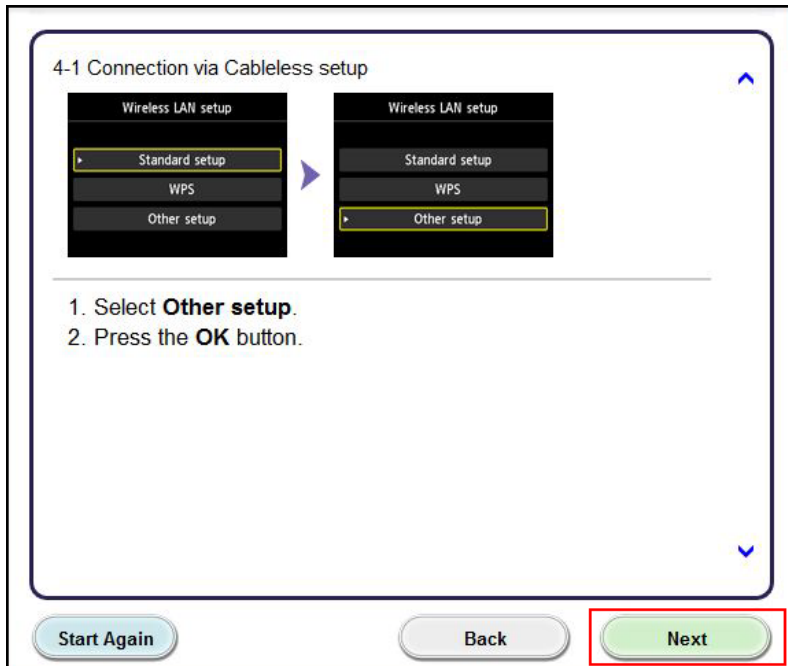
When using **WEP key number** 2, 3 or 4, select "Advanced setup".  
Advanced setup method is intended for experienced users. If you are unfamiliar with Network functions, please click "Back" and select "Standard setup".

Connect Directly from Computer over **Wireless Connection**

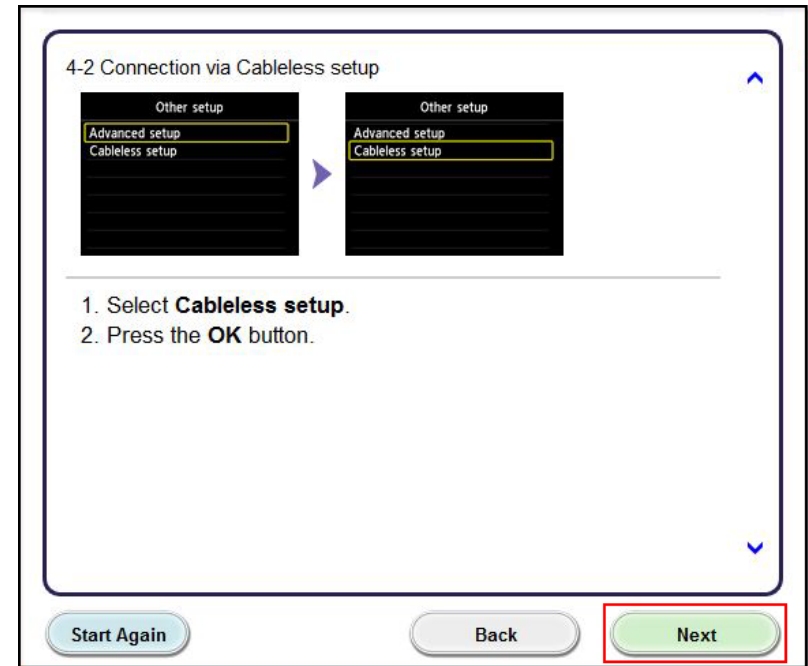
Cableless setup may take some time. Internet connection may become temporarily unavailable during setup.  
Cableless setup is not available on Windows XP. Perform setup with another connection method.

# Installing the Drivers & Software

Select **Other setup** on your printer and press the **OK** button.  
Click **Next** on the **Connection via Cableless setup** screen (4-1).



Select **Cableless setup** on your printer and press the **OK** button.  
Click **Next** on the **Connection via Cableless setup** screen (4-2).



# Installing the Drivers & Software

Press the **OK** button on your printer. Click **Next** on the **Connection via Cableless setup** screen (4-3)

4-3 Connection via Cableless setup

Enable direct communication with a computer or wireless information device to retrieve the setting details and connect to an access point.

Select **OK**.

Follow the instructions on the computer or wireless information device to perform the operation.

**Cancel**

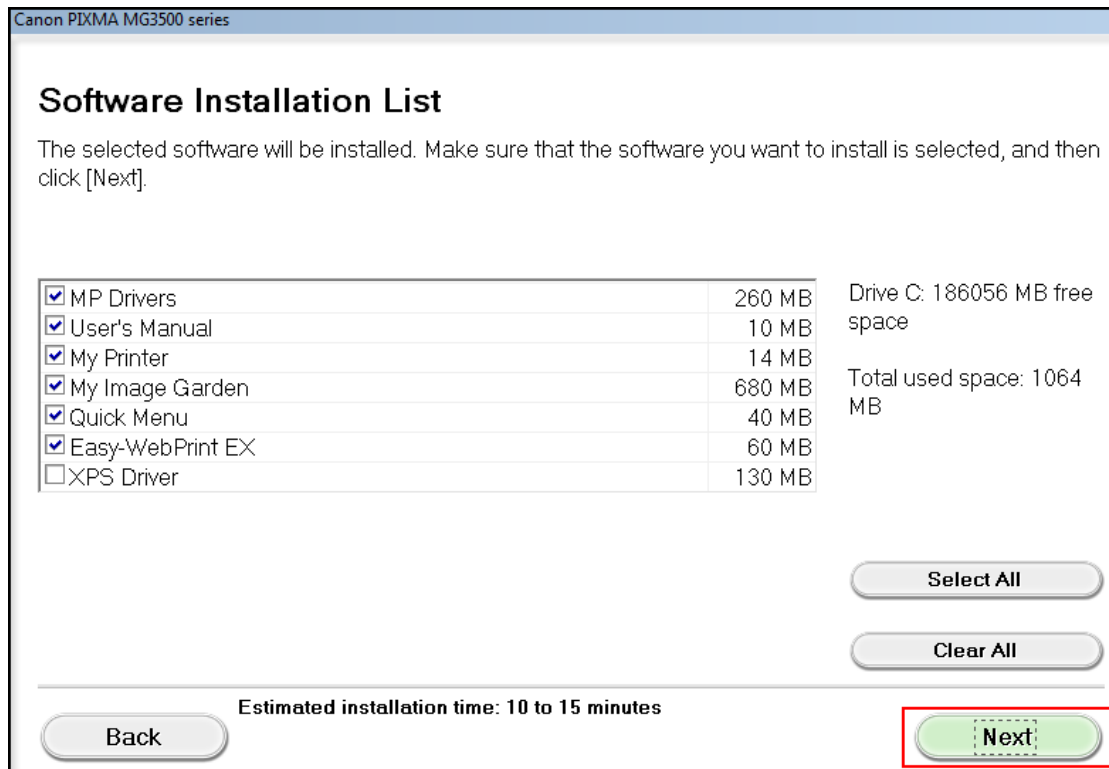
1. Press the **OK** button.
2. When the screen shown to the right appears, click "Next," then follow the instructions on the next screen to proceed with setup.

**Start Again**   **Back**   **Next**

# Installing the Drivers & Software

Continue following on-screen instructions. On the **Software Installation List**, select \*software to install and click **Next**.

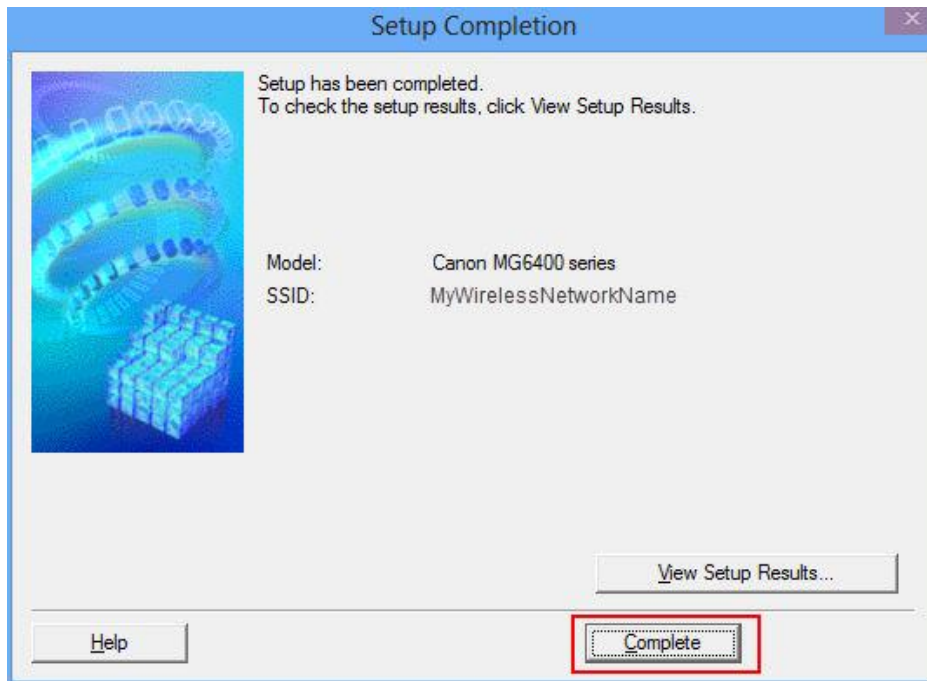
\***MP Drivers** is required and cannot be deselected. We recommend installing **My Image Garden** and **Quick Menu** to take full advantage of the printer's features.



# Installing the Drivers & Software

Continue following on-screen instructions.

When the **Setup Completion** dialog box appears, click **Complete**.



At this point, setup of the printer and network is complete. Continue to follow any remaining on-screen instructions to finish and exit the setup program.