

Getting Your Multifunction Back On Your Network After A Router Or Network Change

PIXMA MX892

Macintosh OS

Important

If any of the following situations exist

- You have replaced your Router or Access Point
- You want to use a different wireless network
- Router settings have been changed.

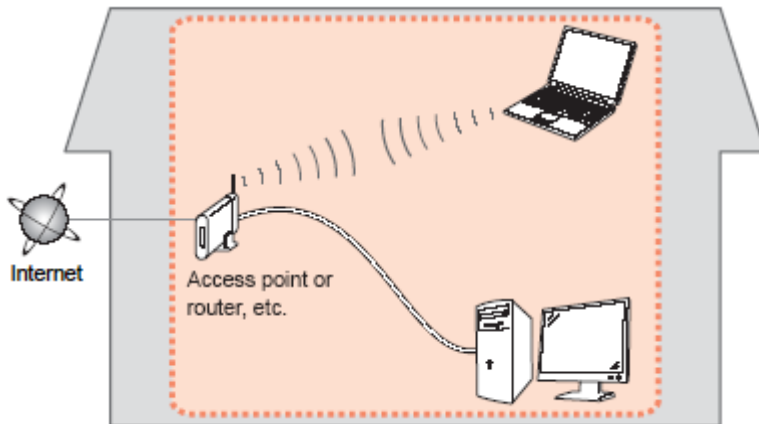
Please complete the following steps to apply the new configuration settings to your multifunction.

Preparing to Connect My Multifunction To My Network

[<< Previous](#)[Next >>](#)

Network Requirements

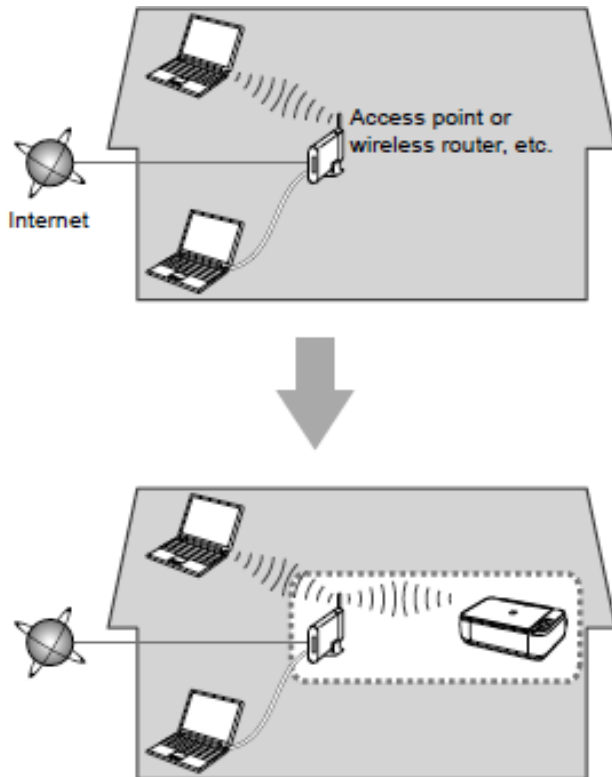
Before connecting the machine to the network, make sure that configuration of the computer and access point or router is complete, and that the computer is connected to the network.



Wireless Connection

Before connecting the machine to the network, the computer needs to be connected to the network. Make sure that configuration of the computer and access point or router is complete.

Preparing to Connect My Multifunction To My Network

[<< Previous](#)[Next >>](#)

An "Ad-hoc connection," which establishes a direct wireless connection between the computer and printer without using an access point, is not supported.

A router or access point is required for your printer to be used on a wireless network.

Notes on Network Connection

- The configuration, router functions, setup procedures and security settings of the network device vary depending on your system environment. For details, refer to your device's instruction manual or contact its manufacturer.
- In an office setup, consult your network administrator
- If you connect to a network that is not protected with security measures, there is a risk of disclosing data such as your personal information to a third party.
- If an error message appears or if you have trouble with the network connection, refer to the printed manual: Network Setup Troubleshooting.
- Place the machine and computer on the same network segment.

Software Installation

To use the machine by connecting it to a computer, software including the drivers needs to be copied (installed) to the computer's hard disk. The installation process takes about 20 minutes. (The installation time varies depending on the computer environment or the number of application software to be installed.)

IMPORTANT

- Log on as the administrator (or a member of the Administrators group).
- Quit all running applications before installation.
- Do not switch users during the installation process.
- Internet connection may be required during the installation. Connection fees may apply. Consult the internet service provider.
- It may be necessary to restart your computer during the installation process. Follow the on-screen instructions and do not remove the Setup CD-ROM during restarting. The installation resumes once your computer has restarted.
- If the firewall function of your security software is turned on, a warning message may appear that Canon software is attempting to access the network. If such a warning message appears, set the security software to always allow access.

Installing the PIXMA MX892 on Your Wireless Network

When you reinstall your printer on your network because of a router or network change, you follow the same procedure as for a first time install. A step-by-step walk through of the wireless setup is built in to the installation routine of the software that shipped with your PIXMA.

***Insert the Setup CD-ROM** that came with your printer into your CD-ROM drive and proceed through the easy to follow instructions.

*If you don't have or cannot use the Setup CD-ROM, you can still install the printer using a downloaded file. [Click here for information.](#)

If the following screen appears, click **Start Setup Again**



Connecting to the Wireless Network

[<< Previous](#)[Next >>](#)

Follow the on-screen instructions. When the **Connection Method Selection** screens (1-1 and 1-2) appear, be sure to select **Network Connection**, then **Wireless Connection**.

1-1 Connection Method Selection

Select a method to connect the printer.



Network Connection

Select this when using the printer with your computer without using a **USB** cable, or when sharing the printer with other computers. **Access point** or **router** is

1-2 Connection Method Selection

Select a method to connect to the **network**.



Wireless Connection

Select this when connecting the printer to the network via Wi-Fi (without using a cable).

Continue to follow instructions until the **Setup Procedure Selection** screen (3-1) appears. This is shown on the next page

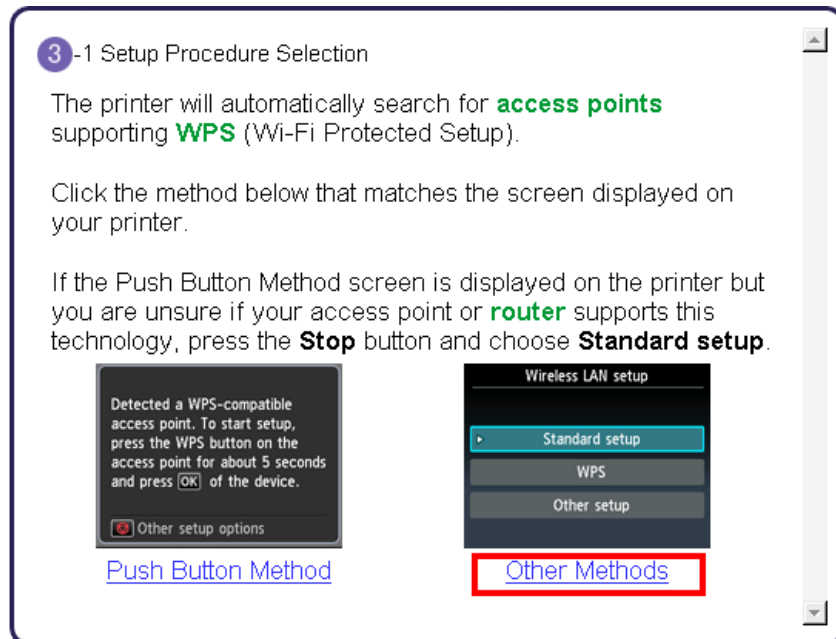
Connecting to the Wireless Network

[<< Previous](#)[Next >>](#)

The printer automatically searches for access points that support **WPS** (Wi-Fi Protected Setup)*.

*Unless you are absolutely sure your access point supports WPS and you are familiar with activating this on your access point, **press the Stop button** on the printer's operation panel and click on **Other Methods** on the **Setup Procedure Selection** screen (screenshot shown below)*.

If the **Push Button Method** is not shown on the printer's operation panel (when no WPS access points have been detected), select **Standard setup** on the printer's operation panel, then click **Other Methods** on the **Setup Procedure Selection** screen

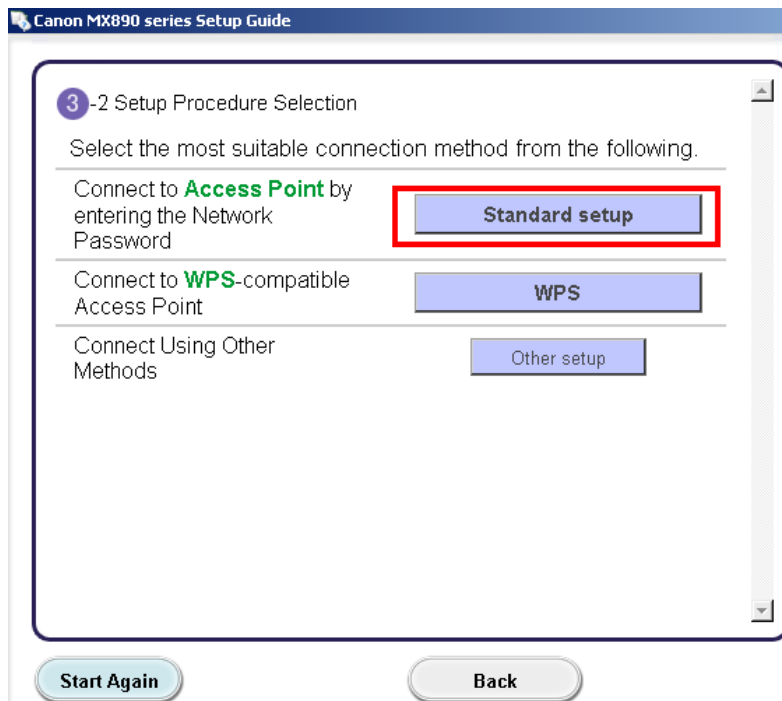


If you selected the **Push Button Method**, follow any remaining instructions to complete setup. [Click here to skip ahead.](#)

If you selected **Other Methods**, please continue to the next page for important information

For Standard setup only

Select **Standard setup** on the **Setup Procedure Selection** screen (3-2)



Continue to next page before proceeding any further with setup

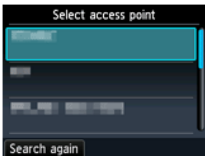
Connecting to the Wireless Network

[<< Previous](#)[Next >>](#)

Follow On-screen instructions. When you get to Step 4-2 and later in Step 4-4 (screens shown below) you will need to know SSID and password information*

Step 4-2

4 -2 Connection via Standard setup



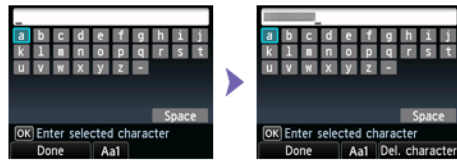
1. Select your **access point**, then press the **OK** button.
If another screen appears, refer to "Troubleshooting" on the right.

If you don't know your access point name ►►► **Confirm the access point name (automatic display)**

Select the automatically displayed access point name in the printer screen.

Step 4-4

4 -4 Connection via Standard setup



1. Enter the **network password (WEP key or passphrase)** of your **access point** or **router** into the printer.

If you don't know the network password for your access point ►►► **Confirm the network password (automatic display)**

Enter the automatically displayed network password in the printer screen.
Click [here](#) for details on how to enter characters

2. Press the left **Function** button.

***Unless you are absolutely certain of this information, please continue to the next page for information on locating / verifying this information**

Continue following on-screen instructions to complete network connection. The Software Installation List appears after network setup is complete. [Proceed to Software Installation List.](#)

Connecting to the Wireless Network

[<< Previous](#)[Next >>](#)

If you don't know your Access Point / Router name or SSID*, or the Passphrase or Network key for your wireless network, you can find this information during Standard setup using the Setup CD-ROM or the downloaded files (Mini Master Setup or Master Setup).

*The terms 'SSID' and 'Access Point / Router' refer to a name used to identify the specific Access Point or Router. 'Passphrase' and 'Network Key' refer to a password required to prevent unauthorized access to communication.

Look for the **Confirm the access point name (automatic display)** or the **Confirm the network key (automatic display)** buttons during the setup procedure.



Clicking either of these buttons will give the needed information. On a Mac OS X system you may need to click 'Allow' on one or more windows after clicking either of the above buttons. See example below of the Wireless Lan Setup Information window. (appearance varies depending on Operating System). Use the provided information when selecting the Access Point / Router and for entering the Network Key (steps 4-2 and 4-4 on the previous page).

Below is information about the access points detected from your computer.

Wireless LAN Setup Information:

Access Point Na...	Network Key (Encryption Key)
YourNetName	YourPassPhraseorNetKey

OK

Installing the Drivers & Software

[<< Previous](#)[Next >>](#)

Network setup is complete. Continue to follow any remaining on-screen instructions to install the software. On the **Software Installation List** screen, select any software to be installed and click **Next**. **MP Drivers** and **Canon IJ Network Tool** are required for the printer to be able to print and scan and cannot be de-selected. ***MP Navigator EX** and **Easy-PhotoPrint EX** are highly recommended to take full advantage of your printer's features. It is not necessary to reinstall these applications if they were installed previously.

Software Installation List

The selected software will be installed. Make sure that the software you want to install is selected, and then click [Next].

You need to install all the software below to use all functions of this printer.

<input checked="" type="checkbox"/>	MP Drivers	190 MB
<input type="checkbox"/>	ScanGear	90 MB
<input type="checkbox"/>	On-screen Manual	250 MB
<input type="checkbox"/>	MP Navigator EX	95 MB
<input type="checkbox"/>	Speed Dial Utility	10 MB
<input type="checkbox"/>	Easy-PhotoPrint EX	610 MB
<input type="checkbox"/>	Solution Menu EX	20 MB
<input checked="" type="checkbox"/>	Canon IJ Network Tool	20 MB
<input type="checkbox"/>		
<input type="checkbox"/>		
<input type="checkbox"/>		
<input type="checkbox"/>		
<input type="checkbox"/>		
<input type="checkbox"/>		

Drive Lion 30925 MB free space

Total used space: 210 MB

Select All

Clear All

Back

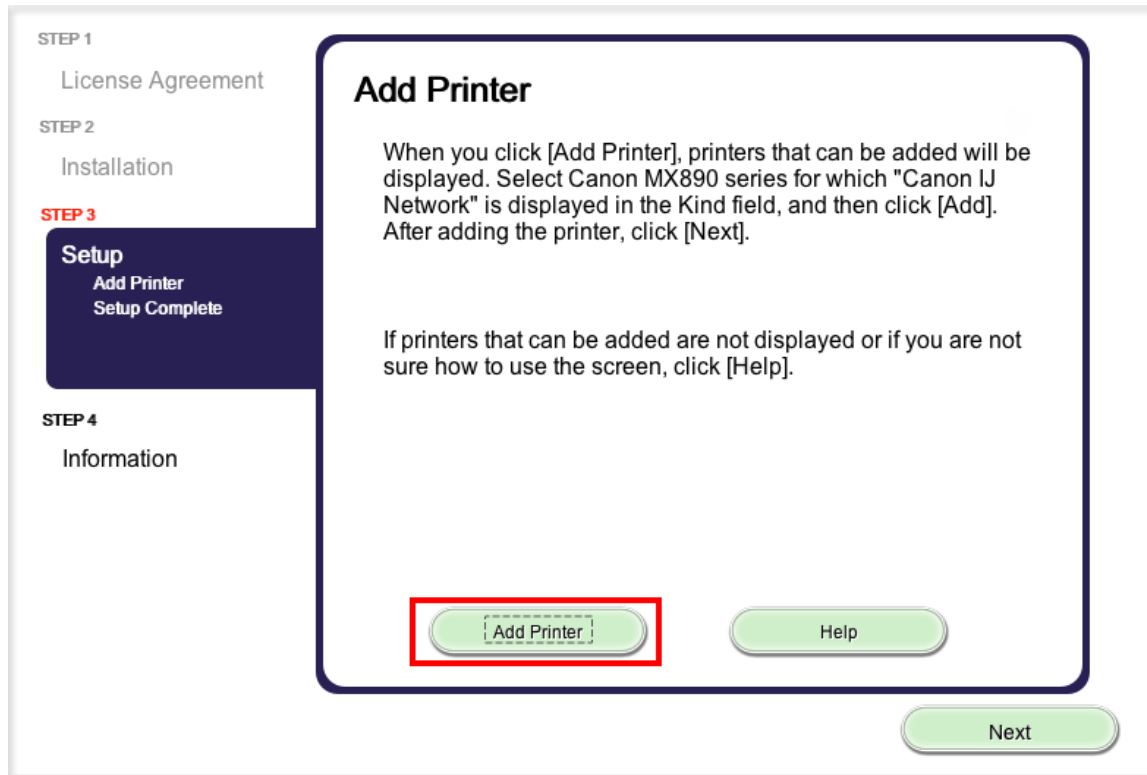
Next

*If you are using the downloaded '**Mini Master setup**' file to install the printer, only the **MP Drivers** will be installed.

Additional software can be downloaded separately. The software can be found in the **Software** section of **Drivers & Software** (the same page where you downloaded the Mini Master setup file)

It is not necessary to reinstall these application programs if they were installed previously.

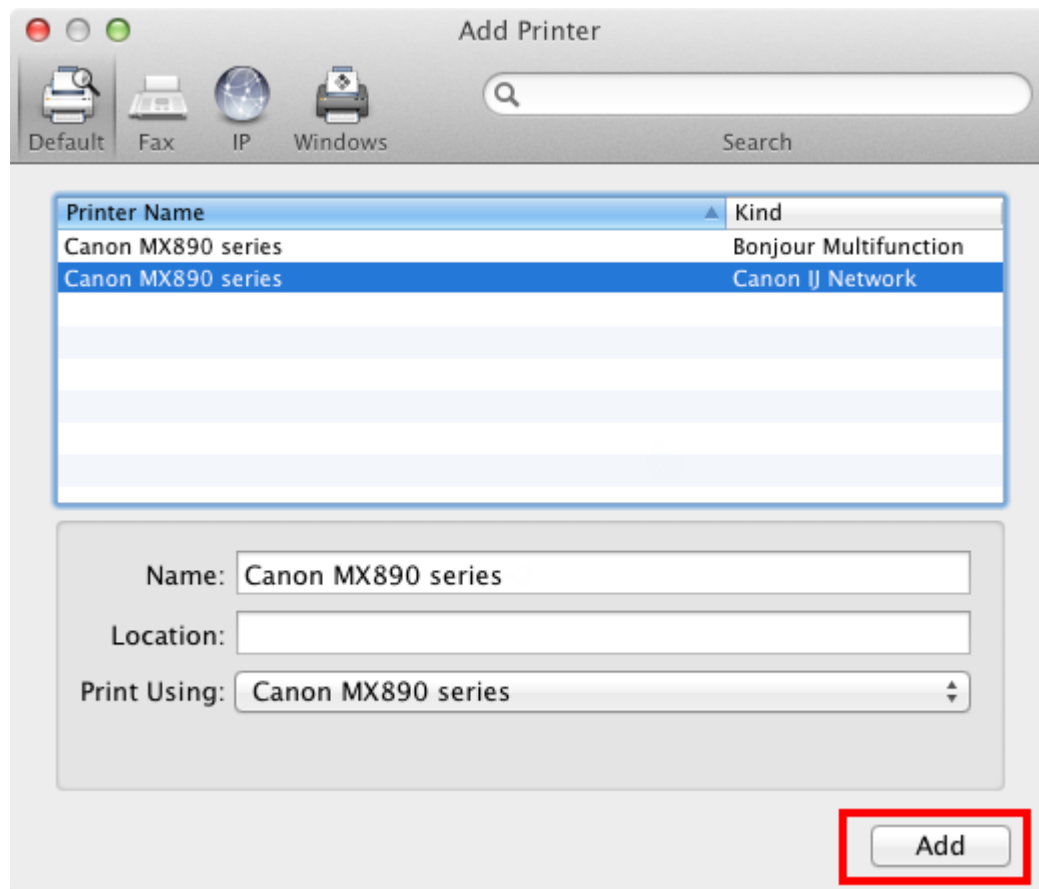
Click **Add Printer** on the **Add Printer** window.



Installing the Drivers & Software

[<< Previous](#)[Next >>](#)

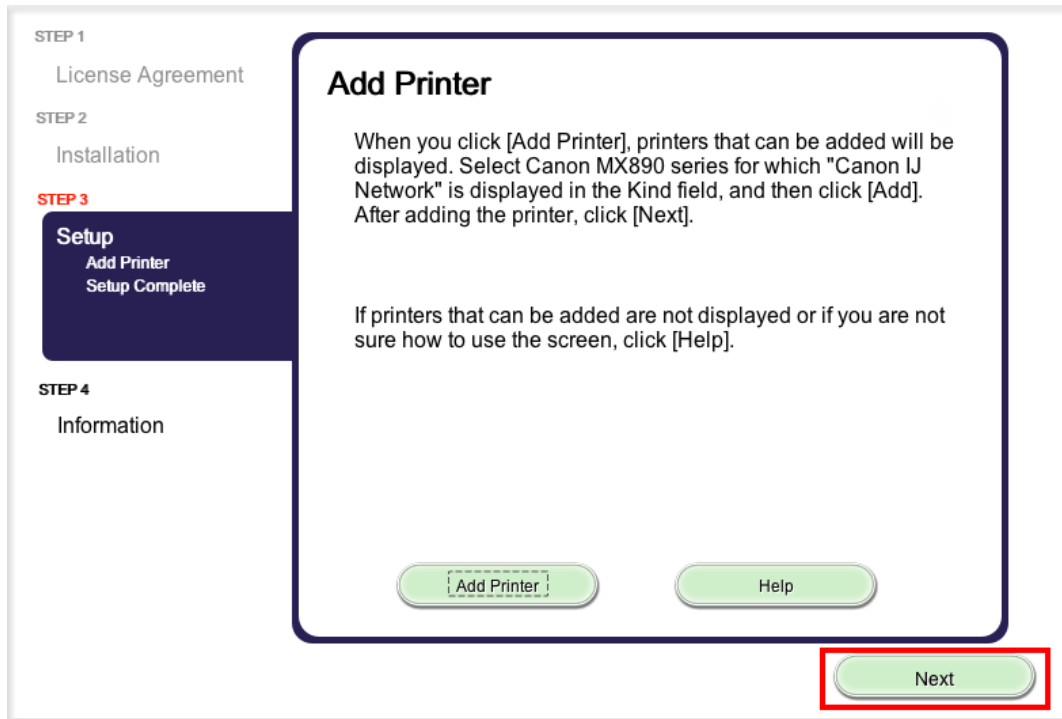
Select the **Canon MX890 series** with **Canon IJ Network** listed in the **Kind** column. Click **Add**.



Installing the Drivers & Software

[<< Previous](#)[Next >>](#)

Click **Next** on the **Add Printer** window.



Setup is complete. Continue to follow on-screen instructions to finish and exit the setup program.

Installing the PIXMA MX892 on Your Wireless Network

If you can't find your CD-ROM, you may download the MX890 series Mini Master Setup, which includes the same step-by-step installation as the CD-ROM, by following the instructions below:

1. [Click here to access the MX892 Drivers & Software page.](#)
2. Select the operating system and version of your computer (see example below).
3. Expand the 'Drivers' section, if necessary, by clicking the red triangle.
4. Click on '**MX890 series Mini Master Setup**'.
5. After reading the details and disclaimer, click 'I Agree – Begin Download' and save the file to your computer.
6. Once the download is complete, double-click the file from its download location to begin the installation.

Drivers & Software

Select an Operating System and OS Version from the drop down menu below then click on a car view the latest supported files for your product. Click on the file description to navigate to download click on "I Agree - Begin Download" to start downloading.

Mac OS

OS X v10.7 Lion

[How to find](#)

Select Language: ☒ English ☐ Spanish ☐ All

Show All

▼ Drivers

Sort by Most Recent Post Date

File Description	Date
⊕ MX890 series Scanner Driver Ver. 18.1.0b (OS X ...	08/31/12
⊕ MX890 series CUPS Printer Driver Ver. 10.67.1.0...	07/26/12
⊕ ICA Driver Ver. 1.11.0n (OS X 10.6/10.7/10.8)	07/11/12
⊕ MX890 series Mini Master Setup (Mac OS X 10.5/...	03/16/12

BACK

[Return to Setup instructions](#)