

Getting Your Multifunction Back On Your Network After A Router Or Network Change

PIXMA MX512

Windows OS

Important

If any of the following situations exist

- You have replaced your Router or Access Point
- You want to use a different wireless network
- Router settings have been changed.

Please complete the following steps to apply the new configuration settings to your multifunction.

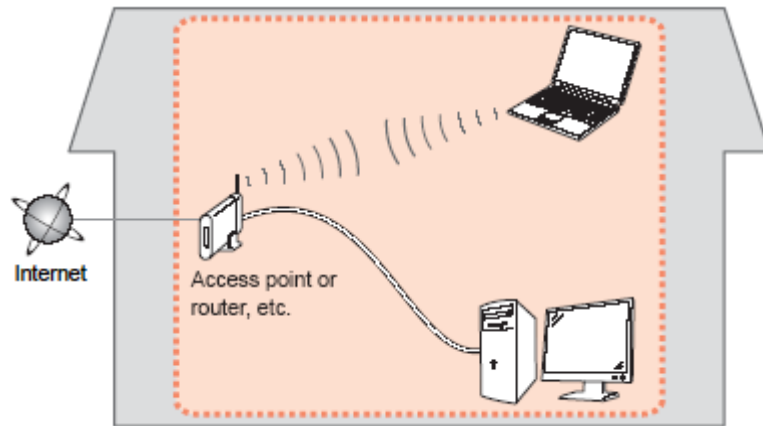
Preparing to Connect Your Multifunction To the Network

[<< Previous](#)

[Next >>](#)

Network Requirements

Before connecting the machine to the network, make sure that configuration of the computer and access point or router is complete, and that the computer is connected to the network.



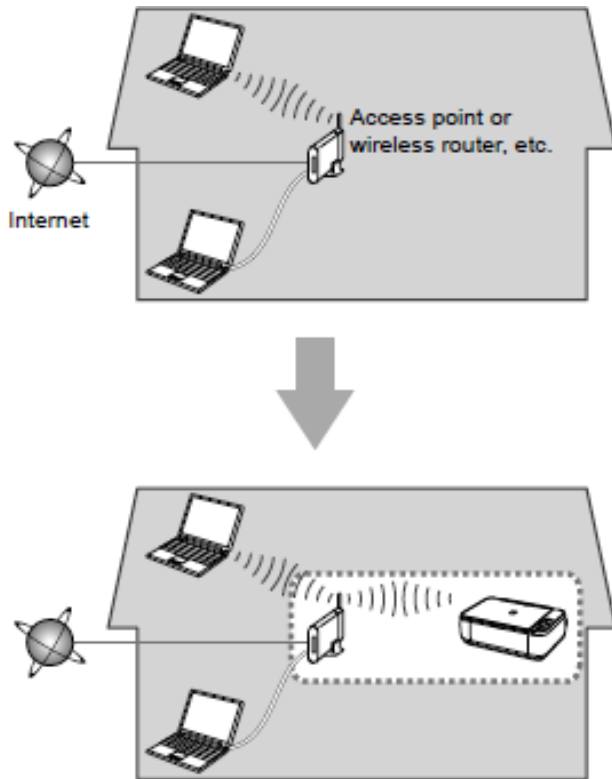
Wireless Connection

Before connecting the machine to the network, the computer needs to be connected to the network. Make sure that configuration of the computer and access point or router is complete.

Preparing to Connect Your Multifunction To the Network

[<< Previous](#)

[Next >>](#)



An "Ad-hoc connection," which establishes a direct connection to the computer over a wireless connection without using an access point, is not supported.

A wireless access point or router is required to use your printer on a wireless LAN.

Notes on Network Connection

- The configuration, router functions, setup procedures and security settings of the network device vary depending on your system environment. For details, refer to your device's instruction manual or contact its manufacturer.
- In an office setup, consult your network administrator
- If you connect to a network that is not protected with security measures, there is a risk of disclosing data such as your personal information to a third party.
- Place the machine and computer on the same network segment.

Software Installation

To use the machine by connecting it to a computer, software including the drivers needs to be copied (installed) to the computer's hard disk. The installation process takes about 20 minutes. (The installation time varies depending on the computer environment or the number of application software to be installed.)

IMPORTANT

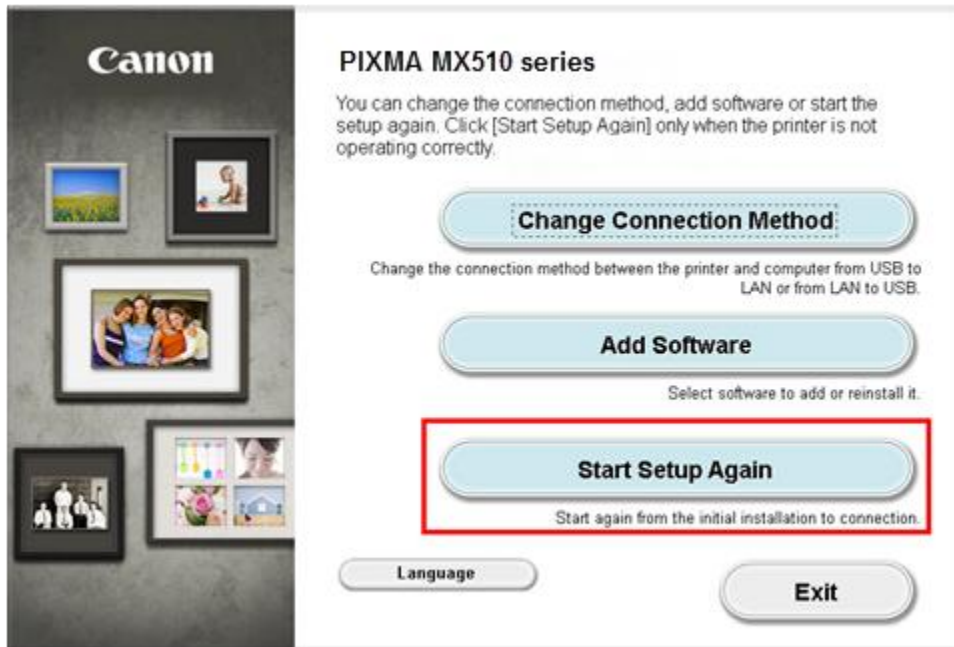
- Log on as the administrator (or a member of the Administrators group).
- Quit all running applications before installation.
- Do not switch users during the installation process.
- Internet connection may be required during the installation. Connection fees may apply. Consult the internet service provider.
- It may be necessary to restart your computer during the installation process. Follow the on-screen instructions and do not remove the Setup CD-ROM during restarting. The installation resumes once your computer has restarted.
- If the firewall function of your security software is turned on, a warning message may appear that Canon software is attempting to access the network. If such a warning message appears, set the security software to always allow access.

Installing the PIXMA MX512 on Your Wireless Network

When you reinstall your printer on your network because of a router or network change, you follow the same procedure as for a first time install. A step-by-step walk through of the wireless setup is built in to the installation routine of the software that shipped with your PIXMA.

Insert the Setup CD-ROM * that came with your printer into your CD-ROM drive and proceed through the easy to follow instructions

If the following screen appears, click **Start Setup Again**



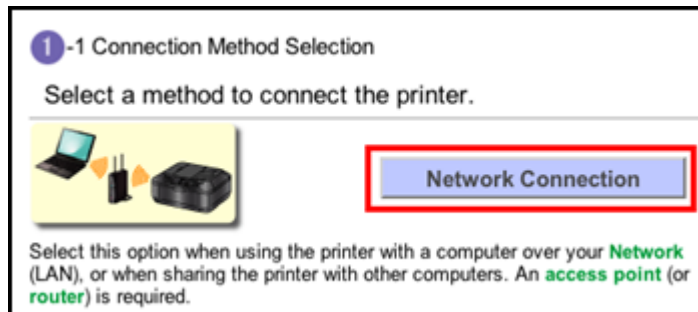
* If you do not have the Setup CD-ROM you can still install the printer using the download file available on our web site. [Click Here for information.](#)

Installing the PIXMA MX512 on Your Wireless Network

If you are re-installing your printer on your network due to a router or network change, the installation procedure is the same as for a first time install. A step-by-step walk through of the wireless setup is built in to the installation routine of the software that shipped with your PIXMA.

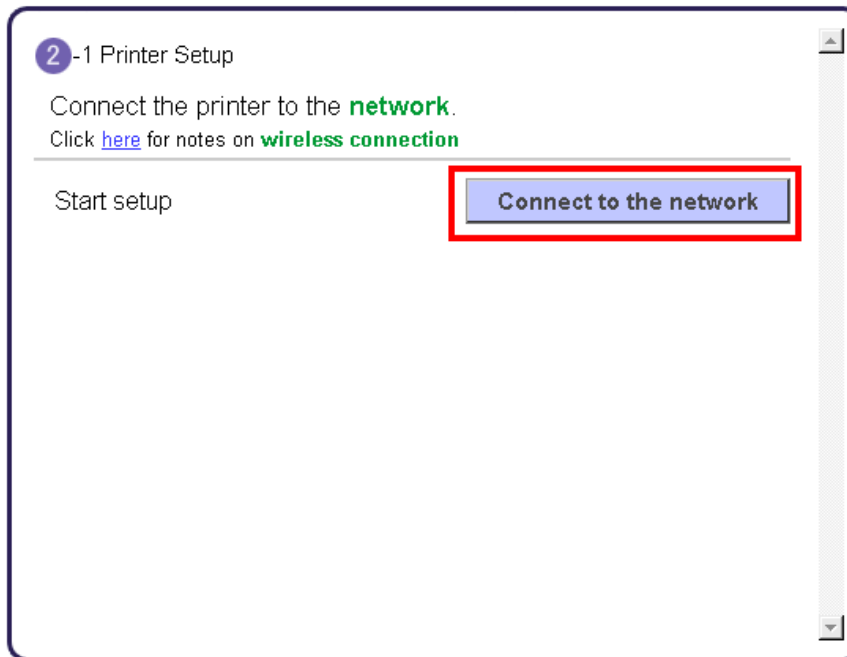
Follow any preliminary On-Screen instructions.

Be sure to select **Network Connection**, then **Wireless Connection** on the **Connection Method Selection** screens.



Continue to follow instructions until the **Printer Setup** screen appears. This is shown on the next page

Click **Connect to the network** on the **Printer Setup** screen (2-1).



Continue to follow instructions until the **Setup Procedure Selection** screen (3-1) appears. This is shown on the next page

The printer automatically searches for access points that support **WPS** (Wi-Fi Protected Setup)*.

*Unless you are absolutely sure your access point supports WPS and you are familiar with activating this on your access point, **press the Stop button** on the printer's operation panel and click on **Other Methods** on the **Setup Procedure Selection** screen (screenshot shown below)*.

If the **Push Button Method** is not shown on the printer's operation panel (when no WPS access points have been detected), select **Standard setup** on the printer's operation panel, then click **Other Methods** on the **Setup Procedure Selection** screen

3 -1 Setup Procedure Selection

The printer will automatically search for **access points** supporting **WPS**.

Click the method below that matches the screen displayed on your printer.

* If the Push Button Method screen is displayed on the printer
When you are unsure if your access point or **router** supports this technology, press the **Stop** button.
When the printer screen changes from left to right, click [here](#)
Proceed to the screen for Standard setup.

[Push Button Method](#)

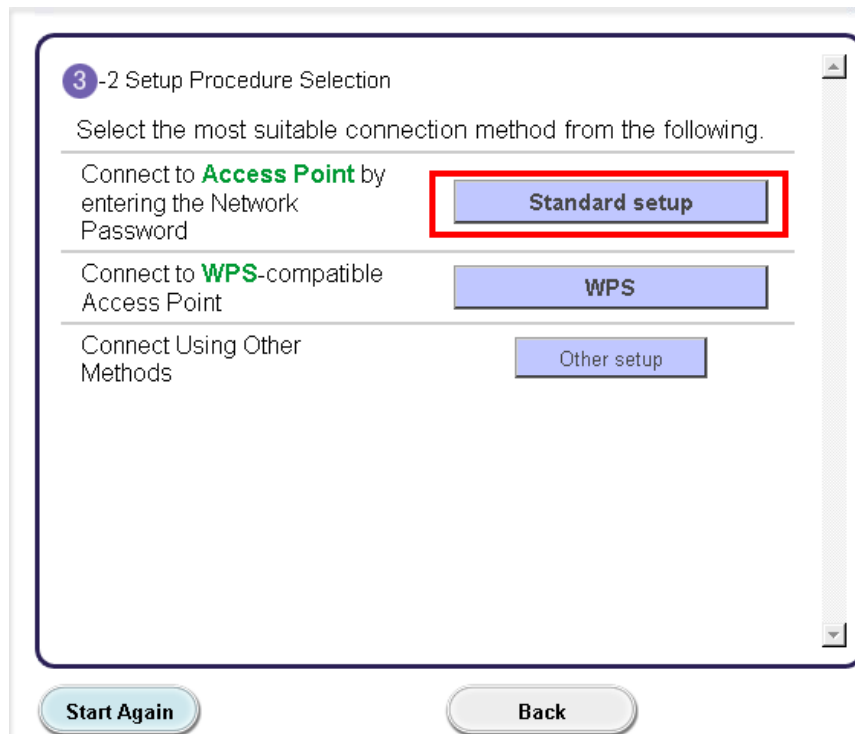
[Other Methods](#)

If you selected the **Push Button Method**, follow any remaining instructions to complete setup. [Skip ahead to instructions](#)

If you selected **Other Methods**, please continue to the next page for important information

For Standard setup only

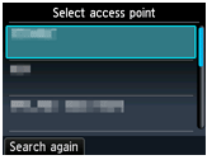
Select **Standard setup** on the **Setup Procedure Selection** screen (3-2)



Continue to next page before proceeding any further with setup

Follow On-screen instructions. When you get to Step 4-2 and later in Step 4-4 (screens shown below) you will need to know SSID and password information*

Step 4-2



4 -2 Connection via Standard setup

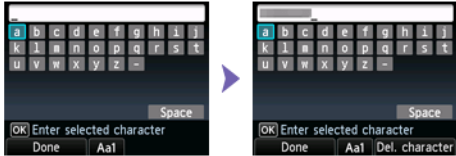
1. Select your **access point**, then press the **OK** button.
If another screen appears, refer to "Troubleshooting" on the right.

If you don't know your access point name

▶▶▶ **Confirm the access point name (automatic display)**

Select the automatically displayed access point name in the printer screen.

Step 4-4



4 -4 Connection via Standard setup

1. Enter the **network password (WEP key or passphrase)** of your **access point or router** into the printer.

If you don't know the network password for your access point

▶▶▶ **Confirm the network password (automatic display)**

Enter the automatically displayed network password in the printer screen.
Click [here](#) for details on how to enter characters.- 2. Press the left **Function** button.

*Unless you are absolutely certain of this information, please continue to the next page for information on locating / verifying this information.

After confirming and entering this information, continue to follow the on-screen instructions.

Connecting to the Wireless Network

[<< Previous](#)

[Next >>](#)

If you don't know your Access Point / Router name or SSID*, or the Passphrase or Network key for your wireless network, you can find this information during Standard setup using the Setup CD-ROM or the downloaded files (Mini Master Setup or Master Setup).

*The terms 'SSID' and 'AccessPoint / Router' refer to a name used to identify the specific Access Point or Router. 'Passphrase' and 'Network Key' refer to a password required to prevent unauthorized access to communication.

Look for the **Confirm the access point name (automatic display)** or the **Confirm the network key (automatic display)** buttons during the setup procedure.



Clicking either of these buttons will give the needed information. See example below of the Wireless Lan Setup Information window. (appearance varies depending on Operating System). Use the provided information when selecting the Access Point / Router and for entering the Network Key.

Below is information about the access points detected from your computer.

Wireless LAN Setup Information:

Access Point Na...	Network Key (Encryption Key)
YourNetName	YourPassPhraseorNetKey

OK

[Return to previous steps.](#)

Network setup is complete. Continue to follow any remaining On-screen instructions to install the software. On the Software Installation List screen, select any software to be installed. **MP Drivers** is required for the printer to be able to print and scan and cannot be de-selected. **MP Navigator EX** and **Easy-PhotoPrint EX** are highly recommended to take full advantage of your printer's features.

Software Installation List

The selected software will be installed. Make sure that the software you want to install is selected. To proceed, click [Next].

<input checked="" type="checkbox"/> MP Drivers	250 MB
<input checked="" type="checkbox"/> On-screen Manual	40 MB
<input checked="" type="checkbox"/> My Printer	10 MB
<input checked="" type="checkbox"/> MP Navigator EX	80 MB
<input checked="" type="checkbox"/> Speed Dial Utility	10 MB
<input checked="" type="checkbox"/> Easy-PhotoPrint EX	270 MB
<input checked="" type="checkbox"/> Solution Menu EX	20 MB
<input checked="" type="checkbox"/> Adobe RGB (1998)	1 MB
<input checked="" type="checkbox"/> Easy-WebPrint EX	25 MB
<input type="checkbox"/> XPS Driver	120 MB

***Note:** If you are using the downloaded **Mini Master Setup** file, only the **MP Drivers** will be installed.

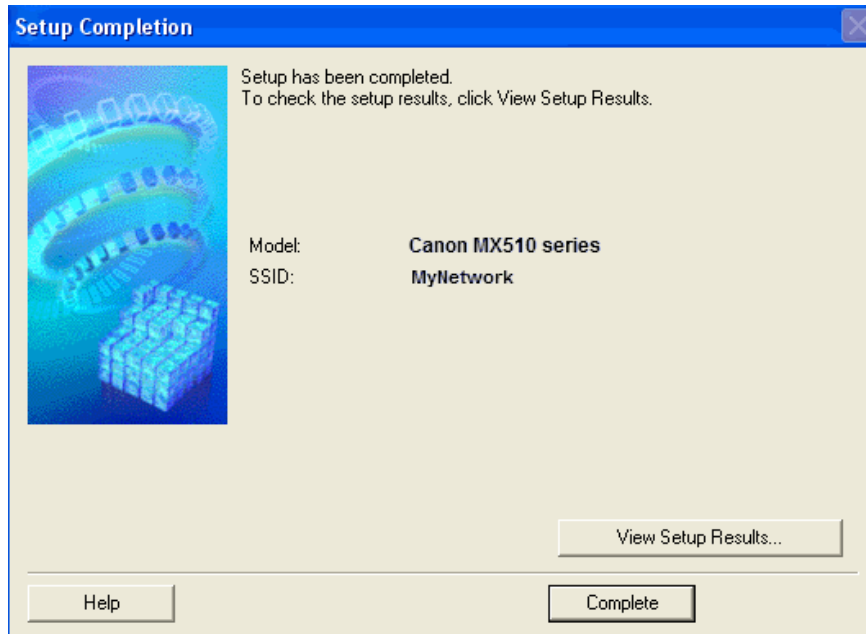
You can download the additional software applications from the **Software** section of the [Drivers & Software](#) page where you obtained the **Mini Master setup** file.

Installing the Drivers & Software

[<< Previous](#)

[Next >>](#)

Click **Complete** when the **Setup Completion** screen appears.



Continue to follow any remaining on-screen instructions to finish and exit the setup program.

Installing the PIXMA MX512 on Your Wireless Network

If you can't find your CD-ROM, you may download the **MX510 series Mini Master Setup**, which includes the same step-by-step installation as the CD-ROM, by following the instructions below:

1. [Click here to access the MX512 Drivers & Software page.](#)
2. Select the operating system and version of your computer (see example below).
3. Expand the 'Drivers' section, if necessary, by clicking the red triangle.
4. Click on '**MX510 series Mini Master Setup**' .
5. After reading the details and disclaimer, click 'I Agree – Begin Download' and save the file to your computer.
6. Once the download is complete, double-click the file from its download location to begin the installation.



The screenshot shows the 'Drivers & Software' page. At the top, there is a heading 'Drivers & Software' and a paragraph of instructions: 'Select an Operating System and OS Version from the drop down menu below then click on the file description to view the latest supported files for your product. Click on the file description to navigate to the file details page. Click on "I Agree - Begin Download" to start downloading.' Below this, there are two dropdown menus: the first is set to 'Windows' and the second is set to 'Windows 7 (x64)'. Below the dropdowns, there are radio buttons for 'Select Language: English (selected), Spanish, All'. A 'Show All' link is present. A section titled 'Drivers' is expanded, showing a table of files. The first row is highlighted with a red box and contains the text 'MX510 series Mini Master Setup (Windows 8/8 x64...'. The other rows are 'MX510 series MP Driver Ver. 1.01 (Windows 8/8 x...' and 'MX510 series XPS Printer Driver Ver. 5.55a (Win...'. The table has columns for 'File Description' and 'Date'.

[Return to Setup instructions](#)