



Connecting the Camera to a Smartphone Using a Wireless Access Point (Manual)

Preparation

Install Camera Connect on a Smartphone

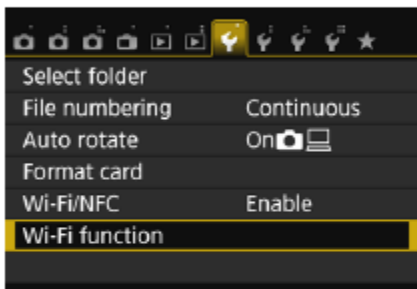
To communicate with a smartphone, the dedicated smartphone application Camera Connect (free of charge) is necessary.

- Camera Connect can be downloaded from the App Store or Google Play. Install Camera Connect on the smartphone and then perform the procedures to establish the connection.
- To use Camera Connect, a smartphone on which iOS or Android installed is necessary. For information on supported operating systems, refer to the download site of Camera Connect.
- When an NFC-enabled smartphone on which Camera Connect is not installed is touched to the camera, the download screen of Camera Connect will be displayed on the smartphone.
- Interface or functions of Camera Connect are subject to change, for application improvement or update. In such a case, features of Camera Connect may differ from sample screens or operation instructions in this manual.

Manual Connection by Searching Networks

When **[Find network]** is selected, a list of active access points nearby is displayed, accompanied by information about them. Select the SSID (or ESS-ID) of the access point to connect to and establish a connection.

Selecting the Wireless Network



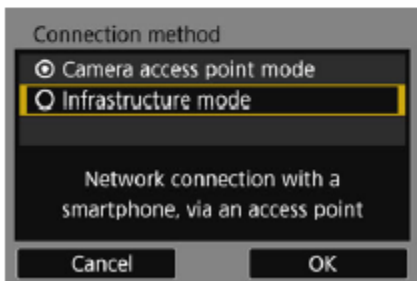
1 Select **[Wi-Fi function]**.

- Under the **[F1]** tab, set **[Wi-Fi/NFC]** to **[Enable]**, then select **[Wi-Fi function]**.



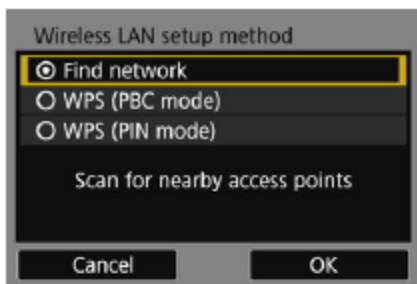
2 Select an item.

- Select either **[📷]**, **[📄]** or **[🖥️]**, then press **<SET>**.



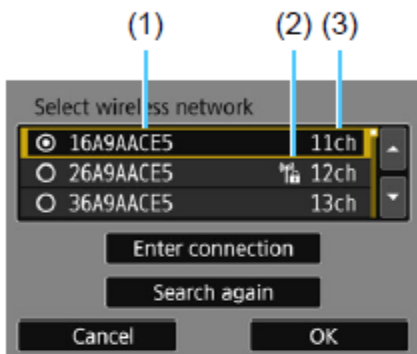
3 Select **[Infrastructure mode]**.

- Displayed when **[📷]** or **[📄]** is selected. Go to step 4 when selecting **[🖥️]**.
- Press the **<▲>** **<▼>** keys to select **[Infrastructure mode]**, then press **<SET>**.
- Select **[OK]** and press **<SET>** to go to the next screen.



4 Select [Find network].

- Press the <▲> <▼> keys to select [Find network], then press <SET>.
- Select [OK] and press <SET> to go to the next screen.



5 Select an access point.

- Press <SET> to enable the selection of an access point.
- Press the <▲> <▼> keys to select an access point, then press <SET>.
- Select [OK] and press <SET> to go to the next screen (p.80).

- (1) First few characters of the SSID
- (2) An icon is displayed if the access point is encrypted
- (3) Channel used

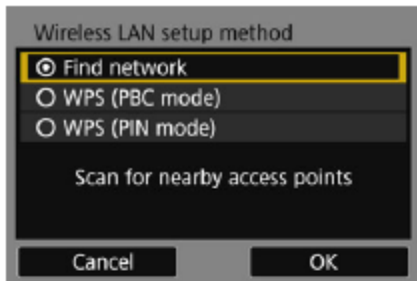
Access Point Encryption

This camera supports the following options for [Authentication] and [Encryption settings]. Therefore, the encryption used by the access point must be one of the following.

- [Authentication]: Open system, Shared key, or WPA/WPA2-PSK
- [Encryption settings]: WEP, TKIP, or AES

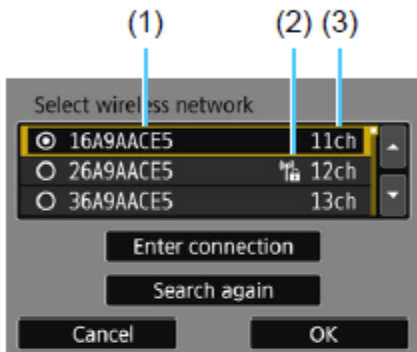
[Enter connection] and [Search again]

- To configure settings for the access point manually, select [Enter connection] and press <SET>. Enter the SSID using the virtual keyboard and then configure settings following the instructions displayed.
- To search for access points again, select [Search again] and press <SET>.



4 Select [Find network].

- Press the <▲> <▼> keys to select [Find network], then press <SET>.
- Select [OK] and press <SET> to go to the next screen.



5 Select an access point.

- Press <SET> to enable the selection of an access point.
- Press the <▲> <▼> keys to select an access point, then press <SET>.
- Select [OK] and press <SET> to go to the next screen (p.80).

- (1) First few characters of the SSID
- (2) An icon is displayed if the access point is encrypted
- (3) Channel used

Access Point Encryption

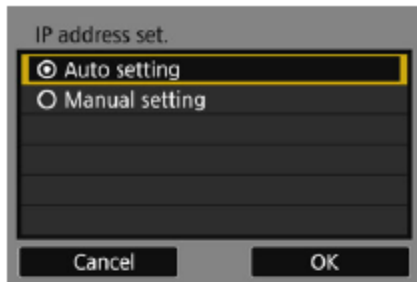
This camera supports the following options for [Authentication] and [Encryption settings]. Therefore, the encryption used by the access point must be one of the following.

- [Authentication]: Open system, Shared key, or WPA/WPA2-PSK
- [Encryption settings]: WEP, TKIP, or AES

[Enter connection] and [Search again]

- To configure settings for the access point manually, select [Enter connection] and press <SET>. Enter the SSID using the virtual keyboard and then configure settings following the instructions displayed.
- To search for access points again, select [Search again] and press <SET>.

Setting the IP Address



9 Select [Auto setting].

- Press the <▲> <▼> keys to select [Auto setting], then press <SET>.
- Select [OK] and press <SET> to display the setting screen for the Wi-Fi function selected in step 2 (p.82).
- If [Auto setting] results in an error or if you want to specify the settings manually, see page 160.



The IP address can only be set automatically in environments using DHCP servers, or access points or routers with DHCP server functionality, such that IP addresses and related settings are assigned and configured automatically.