



Setup for Wireless Printing on iOS Phones
and Tablets
Using Canon PRINT / Inkjet SELPHY app

imagePROGRAF PRO-1000



Set Up The Printer For Use On A Wireless Network Using The Canon PRINT Inkjet/SELPHY App For iOS Smartphones And Tablets

You can use the Canon PRINT Inkjet / SELPHY app to easily set up your imagePROGRAF PRO-1000 printer to the wireless network. The app itself can be used for printing from your iOS device .

Prior to setup you will need to have the Canon PRINT Inkjet / SELPHY app installed on your iPad tablet or iPhone ([Get the Application](#)) and power on the printer.

Steps to complete the setup along with screen shots are shown on the pages that follow.

Notes on Network Connection

- The configuration, router functions, setup procedures and security settings of the network device vary depending on your system environment. For details, refer to your device's instruction manual or contact its manufacturer.
- In an office setup, consult your network administrator
- If you connect to a network that is not protected with security measures, there is a risk of disclosing data such as your personal information to a third party.

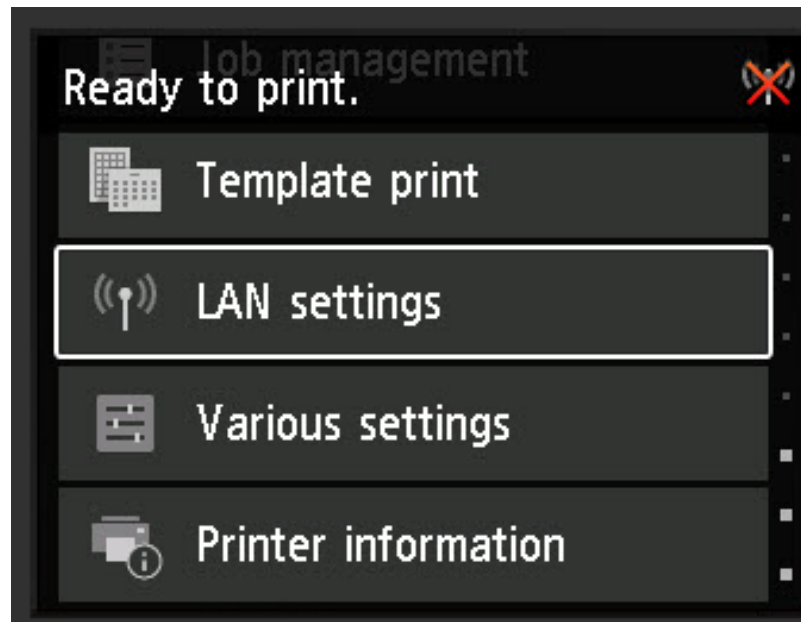
IMPORTANT

- Internet connection may be required during the installation. Connection fees may apply. Consult the internet service provider.



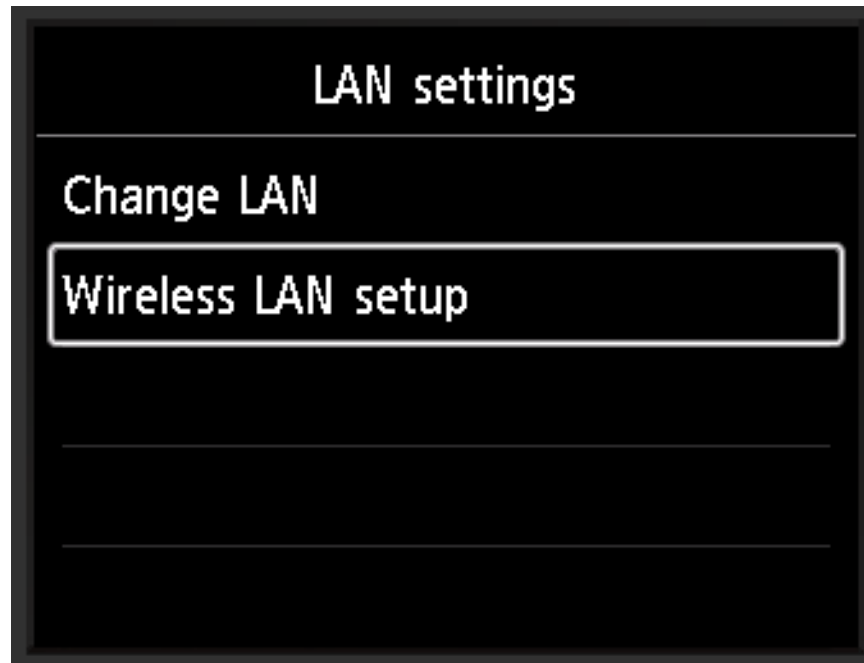
Start Cableless setup on the Printer

1. From the **Home** screen, press the up or down arrows until **LAN settings** appears. Then press the **OK** button.



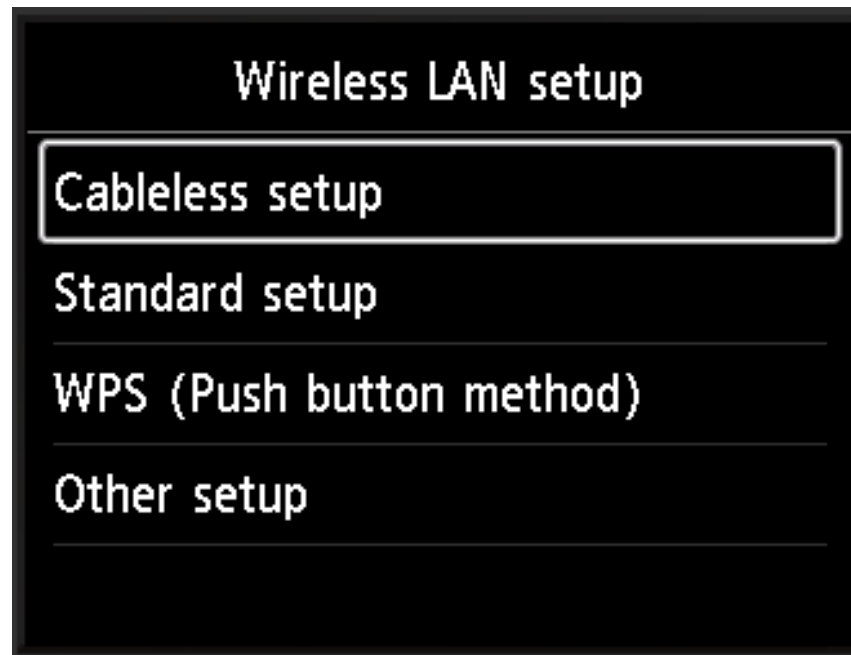


2. Use the down arrow to select **Wireless LAN setup** and press the **OK** button.





3. Use the arrows to select **Cableless setup** and press the **OK** button.



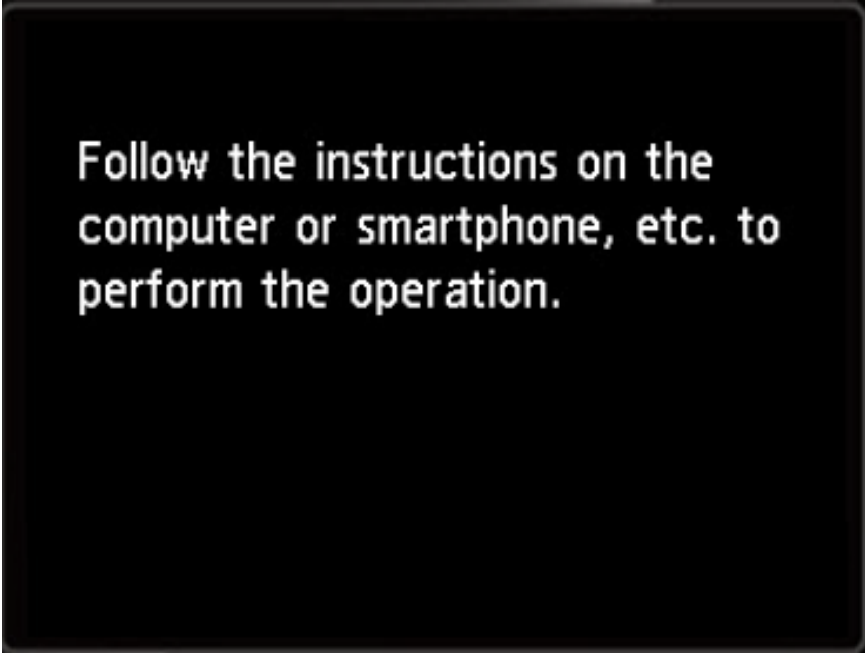


4. Press the **OK** button when this message appears..





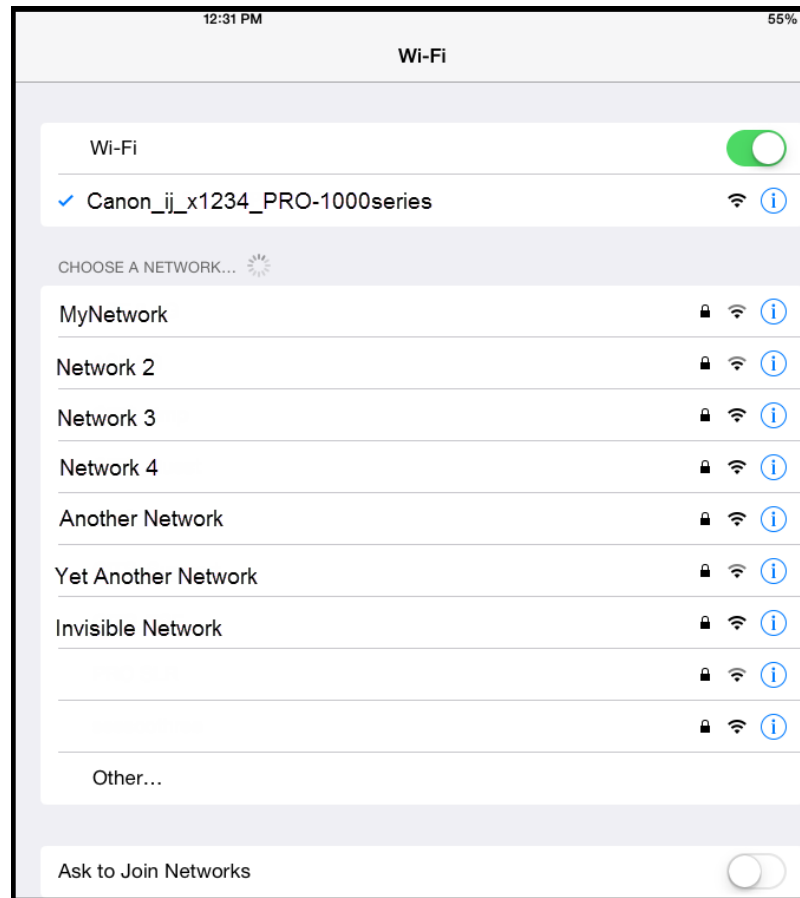
5. When this screen appears, the printer is waiting to receive the information on the wireless network. The remaining setup is performed on the SmartPhone or Tablet.

A black rectangular box with rounded corners containing white text. The text is centered and reads: "Follow the instructions on the computer or smartphone, etc. to perform the operation."

Follow the instructions on the
computer or smartphone, etc. to
perform the operation.

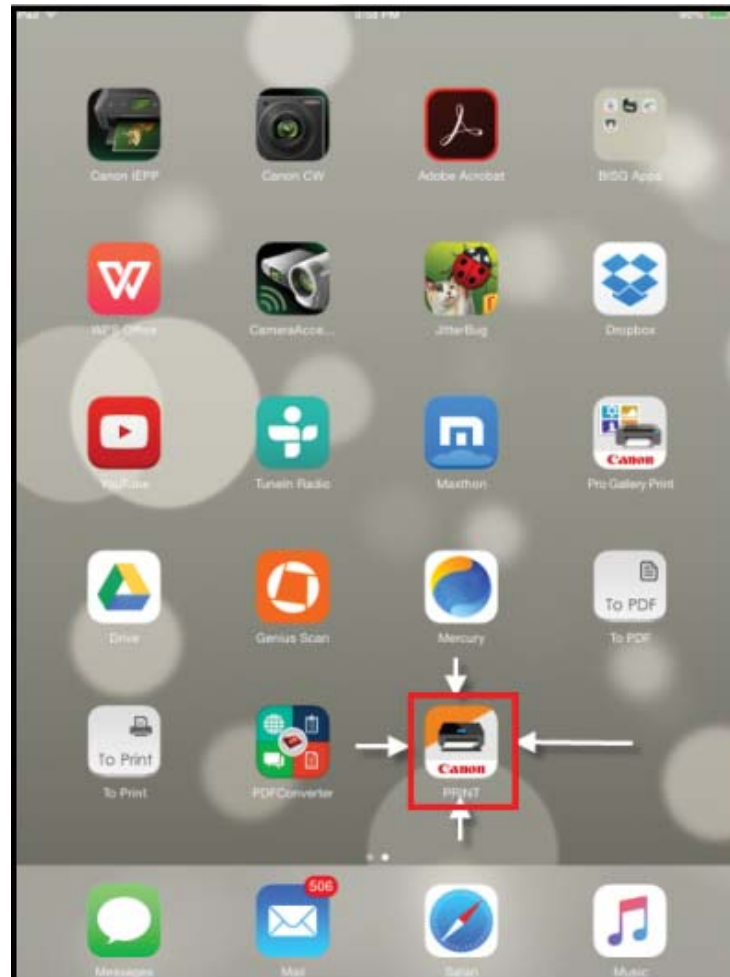


- On the Mobile device, go to settings and select the network that starts with **Canon_ij_** followed by the last 5 digits of the printer's serial number followed by **_PRO-1000series**.
For example, **Canon_ij_x1234_PRO-1000series**



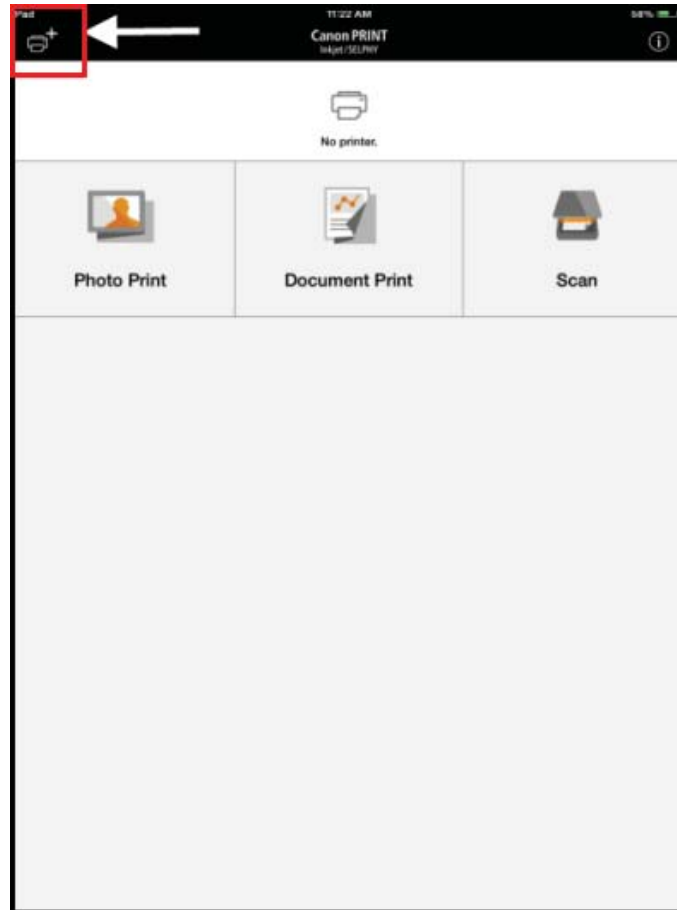


7. On the main screen, tap the **Canon PRINT** icon



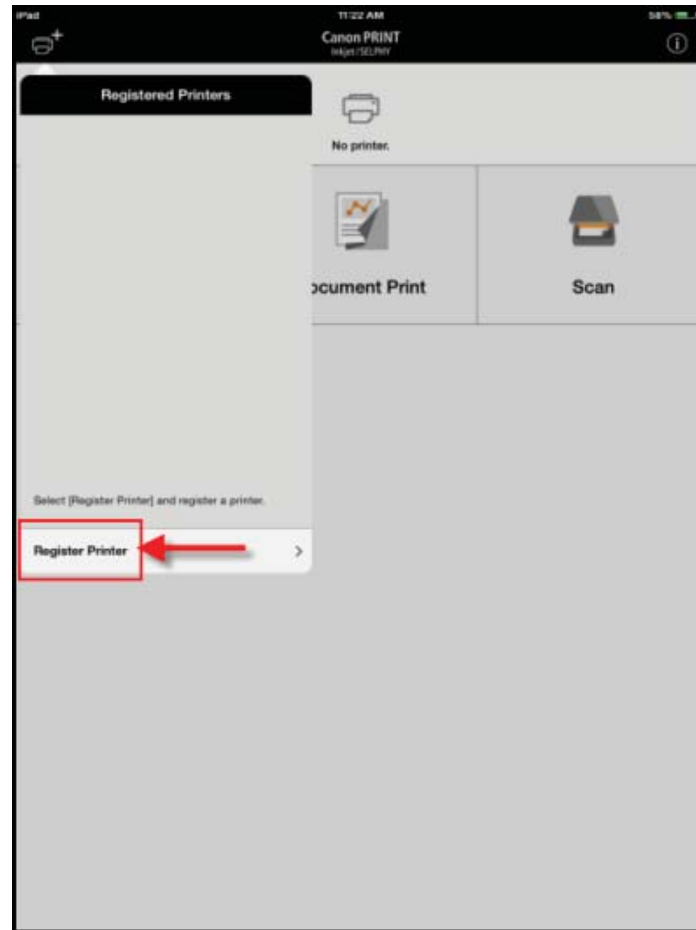


8. Tap the "+" (Plus) icon on the upper left corner of the **Canon PRINT** screen



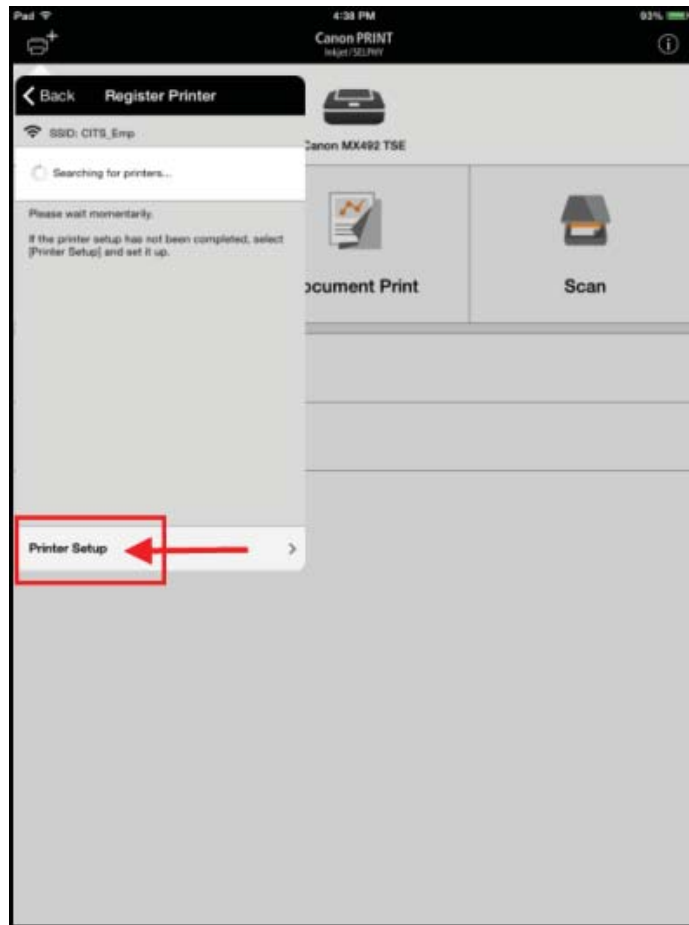


7. Tap **Register Printer**.



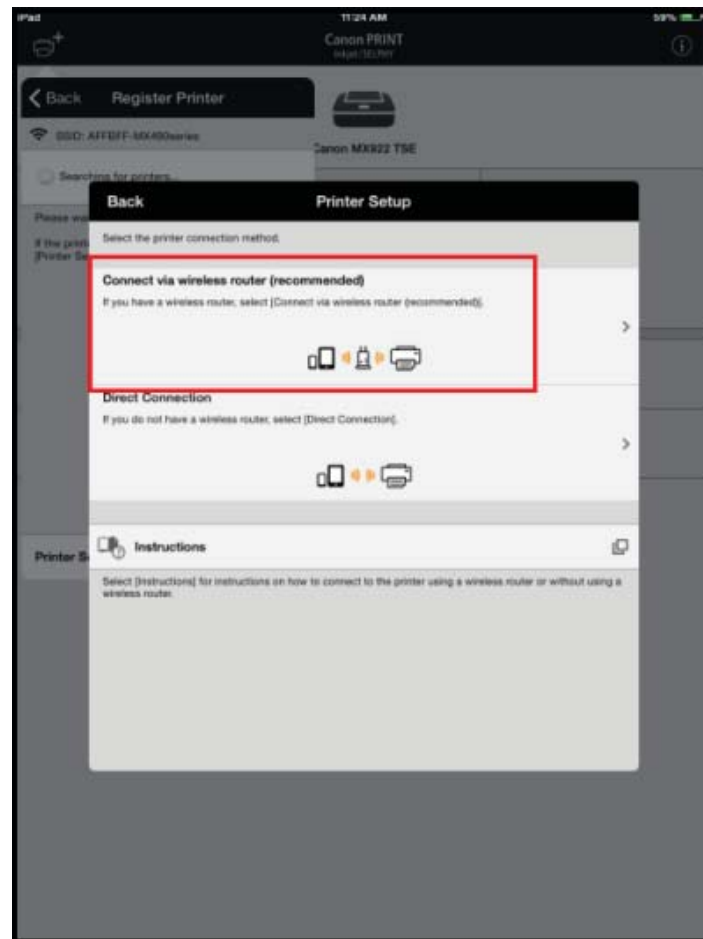


8. Tap **Printer Setup**.



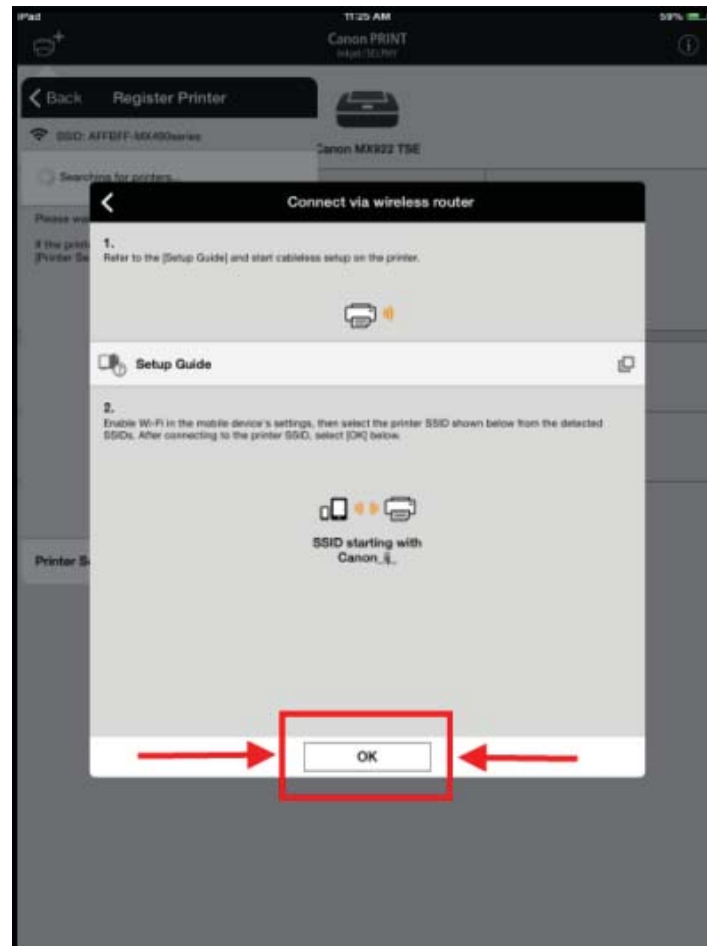


9. Tap **Connect via wireless router (recommended)**.



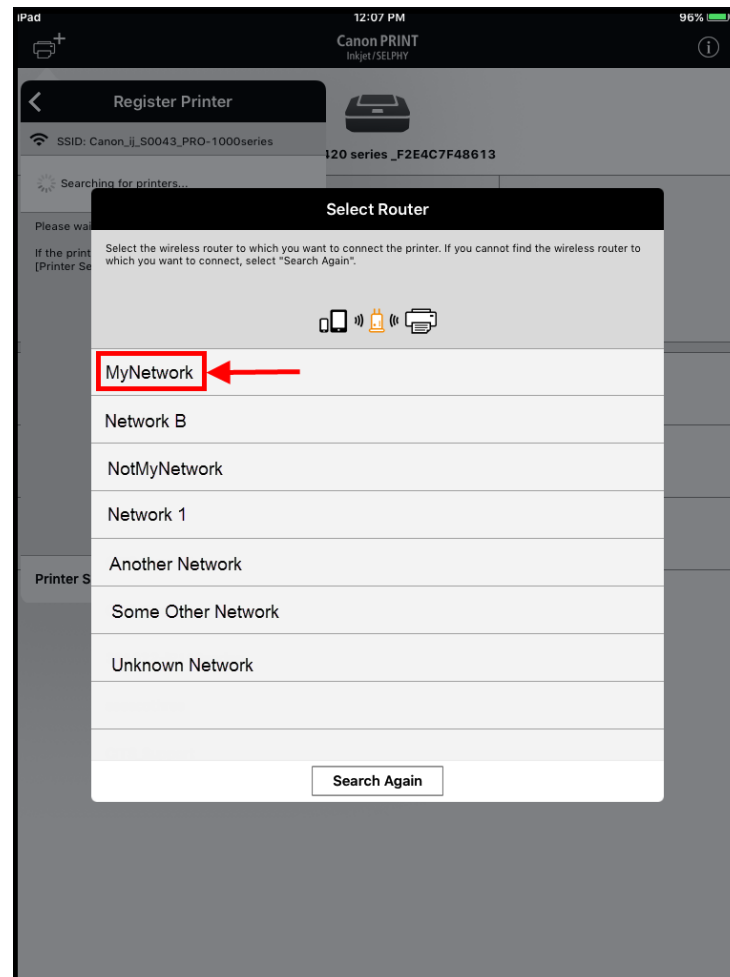


10. Tap OK





11. Tap the name of your wireless network (MyNetwork is used in the example screen below).





14. The printer is now connected to the wireless network and is ready for use.

