



Setup for Wireless Printing on Android Phones
and Tablets
Using Canon PRINT / Inkjet SELPHY app

imagePROGRAF PRO-1000



Set Up The Printer For Use On A Wireless Network Using The Canon PRINT Inkjet/SELPHY App For Android Smartphones And Tablets

You can use the Auto Connect feature of the Canon PRINT Inkjet / SELPHY app to set up your imagePROGRAF PRO-1000 printer to the wireless network. The app itself can be used for printing from your Android device .

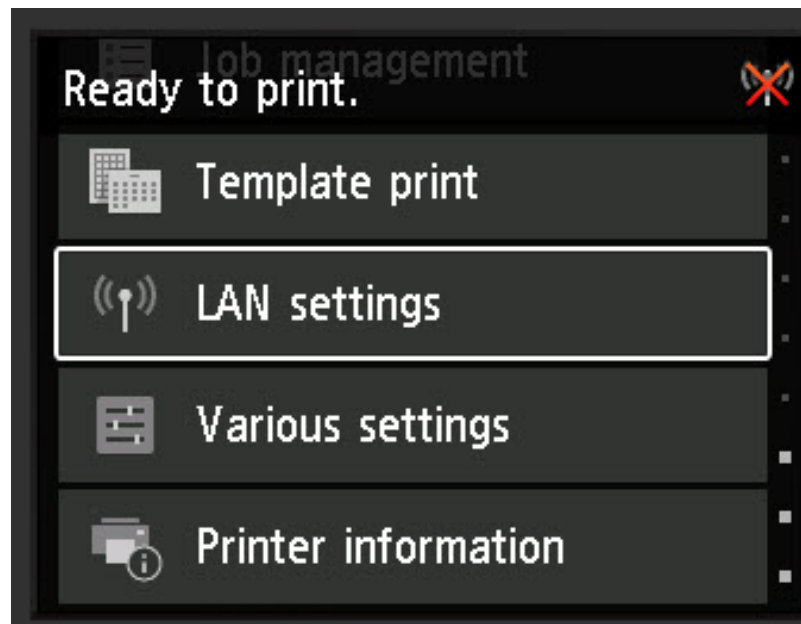
Prior to setup you will need to have the Canon PRINT Inkjet / SELPHY app installed on your Android tablet or Smart Phone ([Get the Application](#)) and power on the printer.

Steps to complete the setup along with screen shots are shown on the pages that follow.



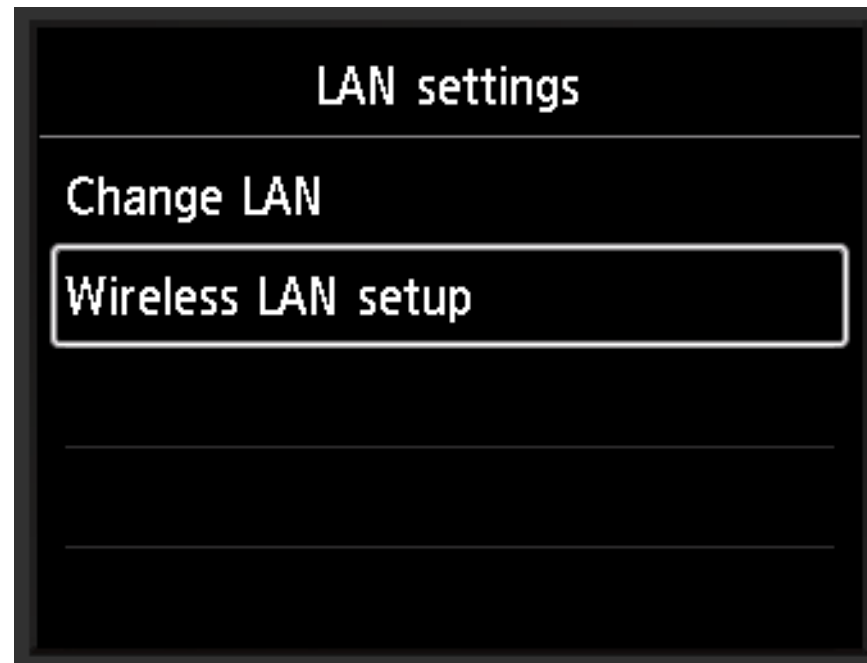
Start Cableless setup on the Printer

1. From the Home screen, press the up or down arrows until LAN settings appears. Then press the OK button.



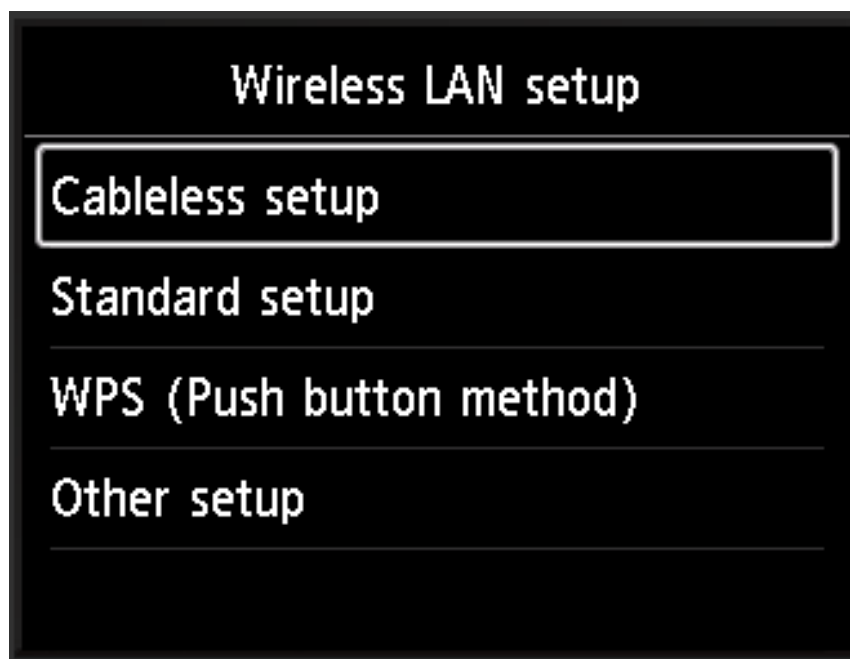


2. Use the down arrow to select **Wireless LAN setup** and press the **OK** button.





3. Use the arrows to select **Cableless setup** and press the **OK** button.





4. Press the OK button when this message appears..



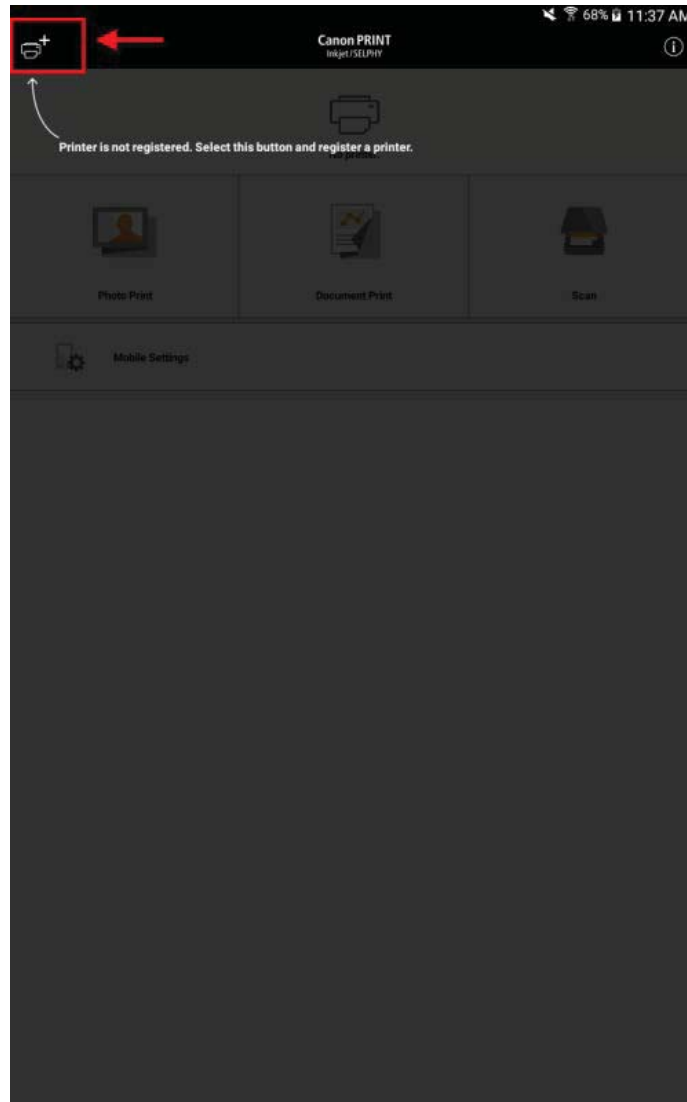


5. When this screen appears, the printer is waiting to receive the information on the wireless network. The remaining setup is performed on the SmartPhone or Tablet.

Follow the instructions on the computer or smartphone, etc. to perform the operation.

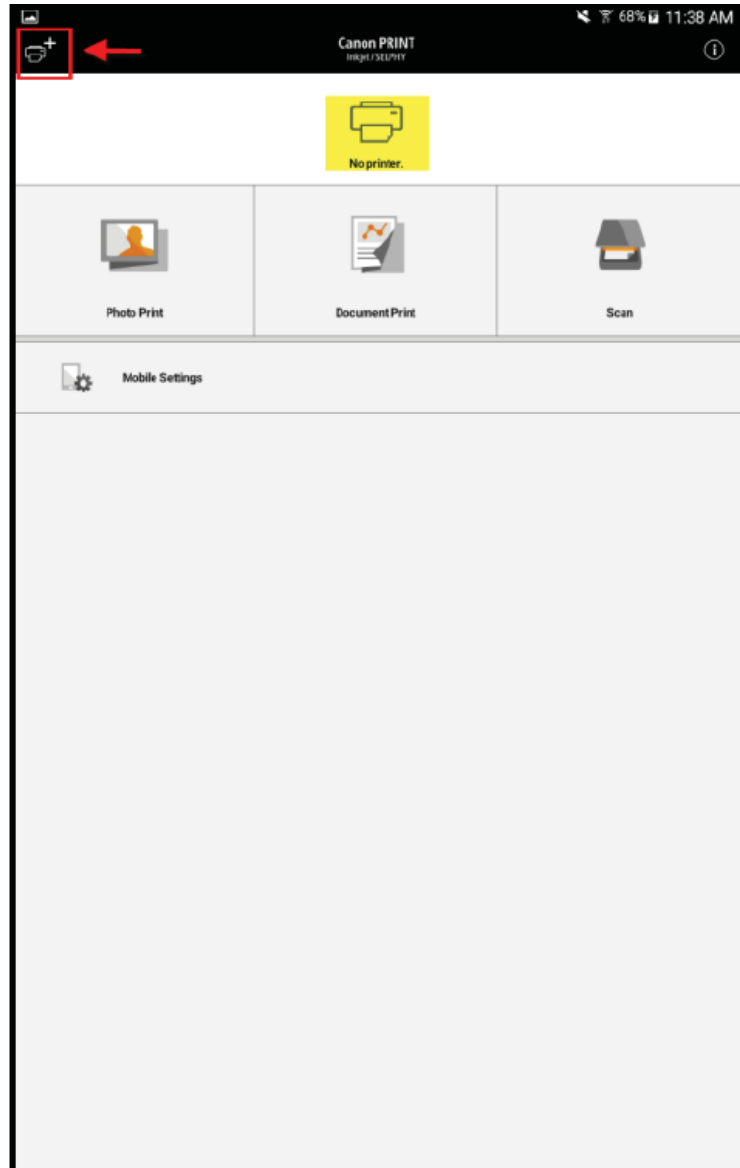


6. Open the Canon PRINT Inkjet / SELPHY app. Click the "+" icon. See screen shot below.



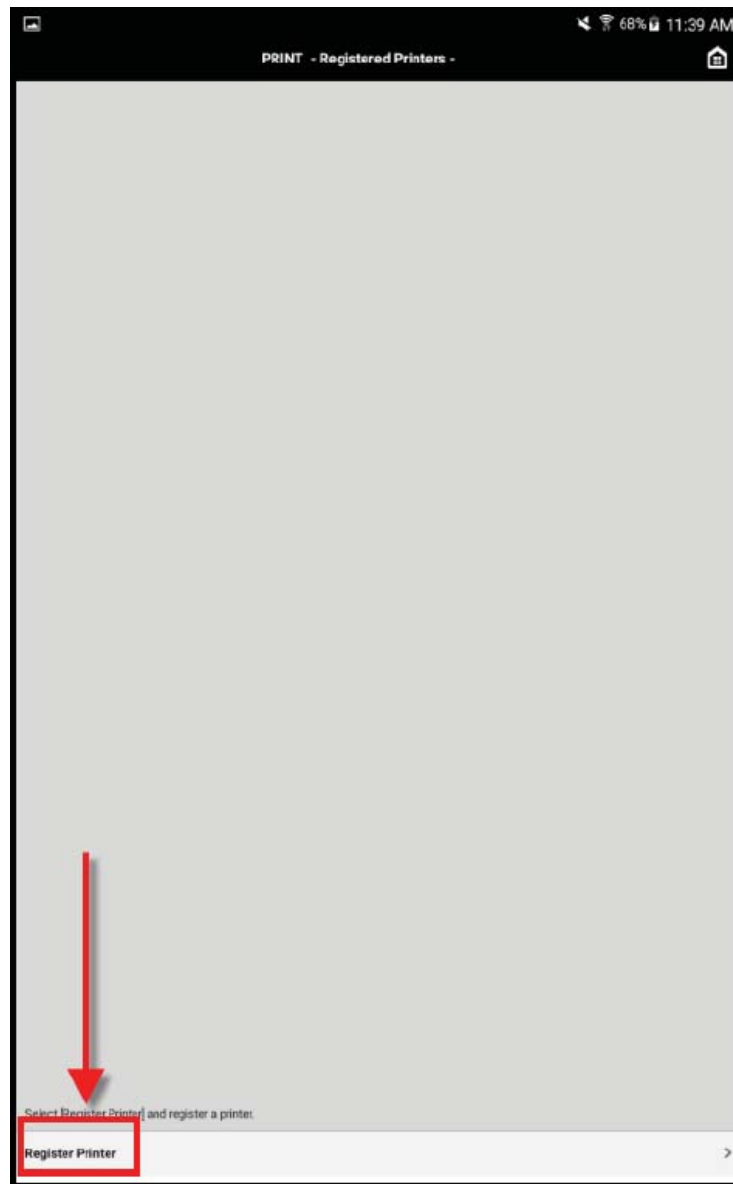


7. Tap the "+"



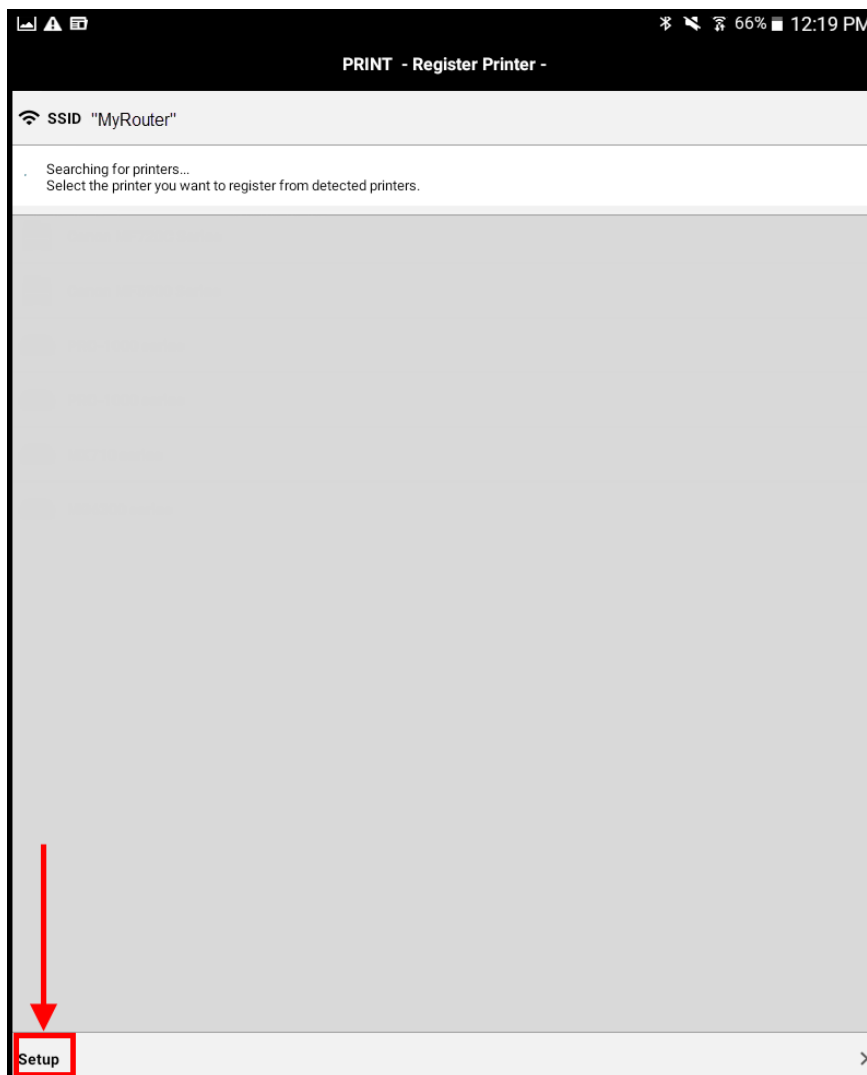


8. Tap Register Printer

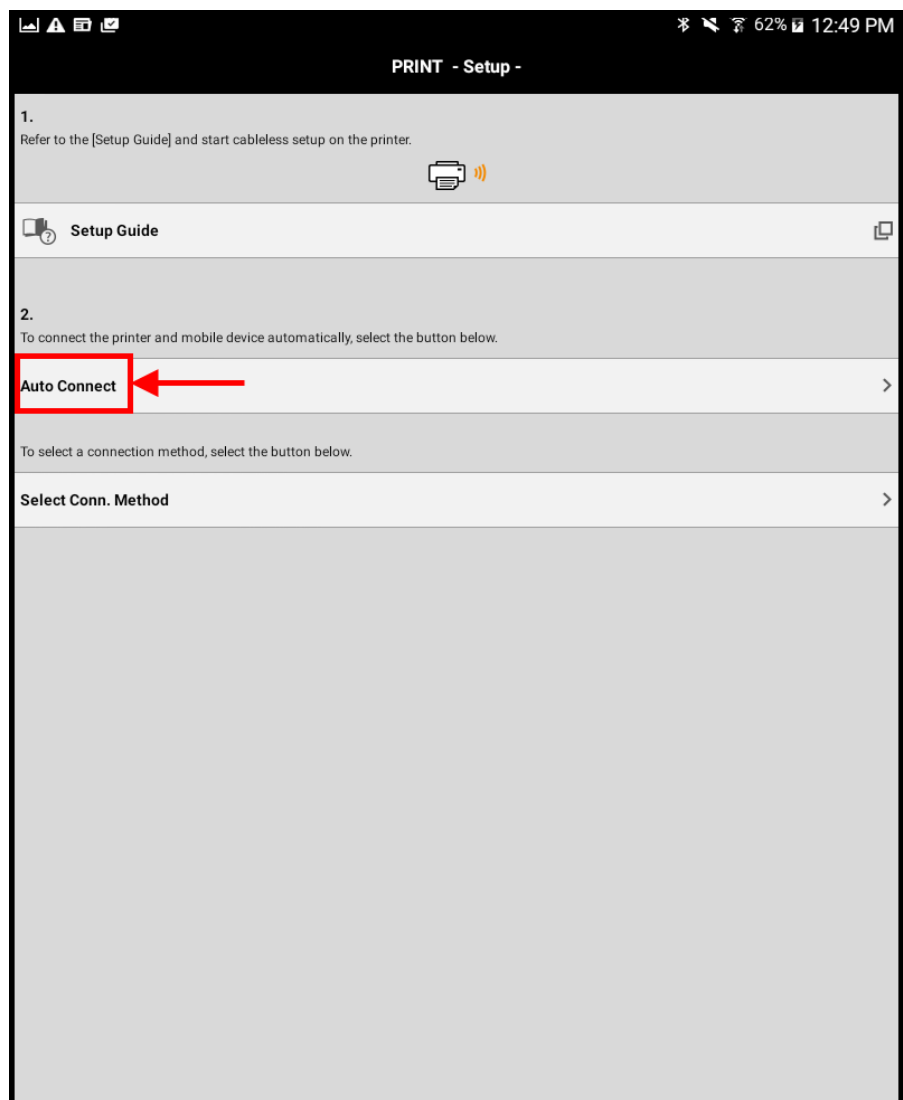




9. Tap Setup.

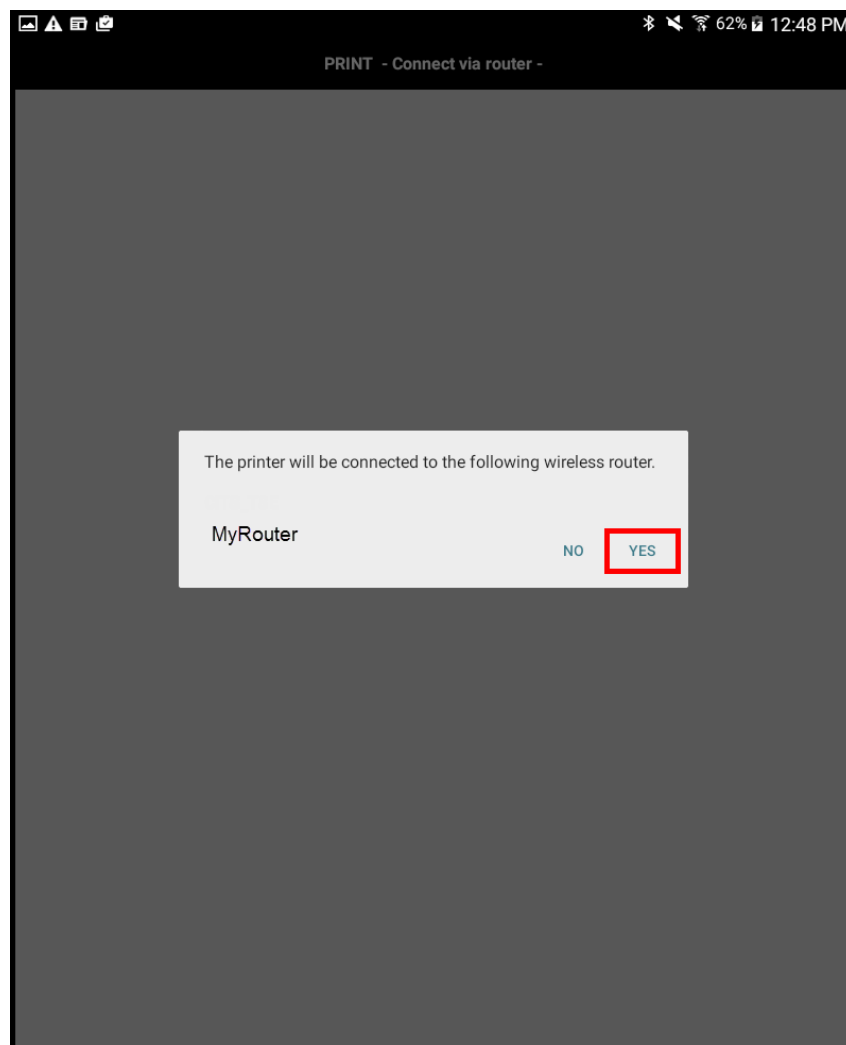


10. Tap Auto Connect.

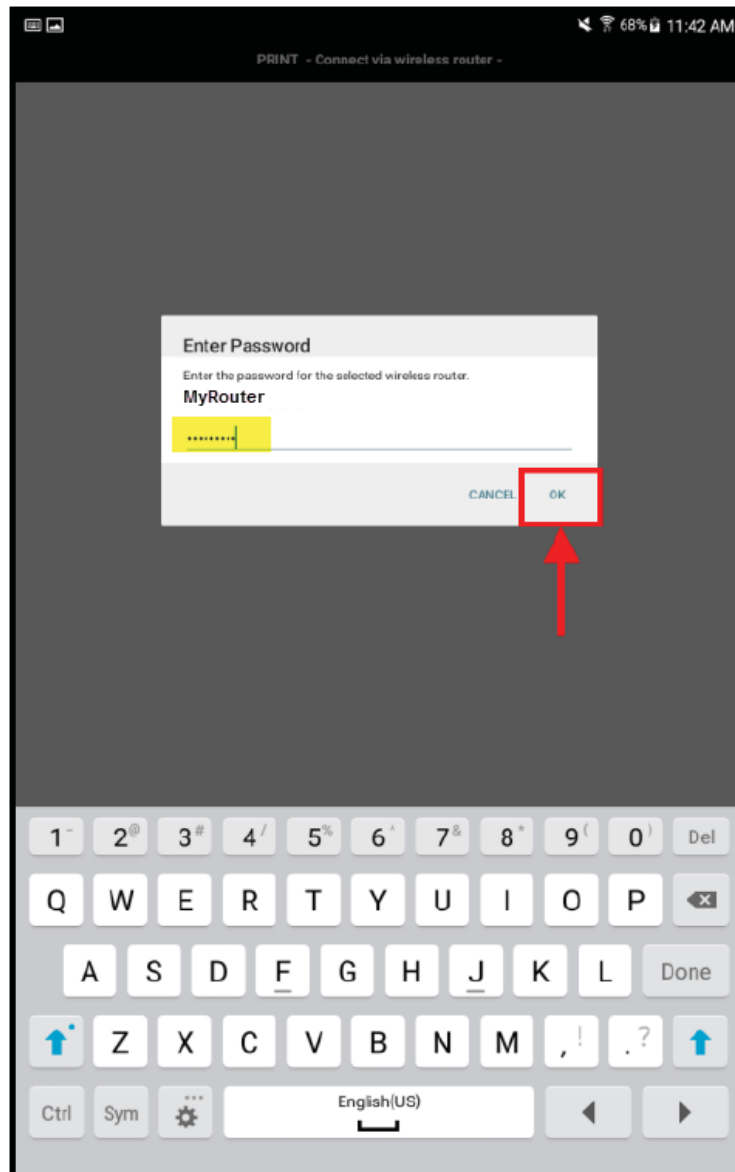




11. Tap Yes.



12. Enter the router's password and tap OK



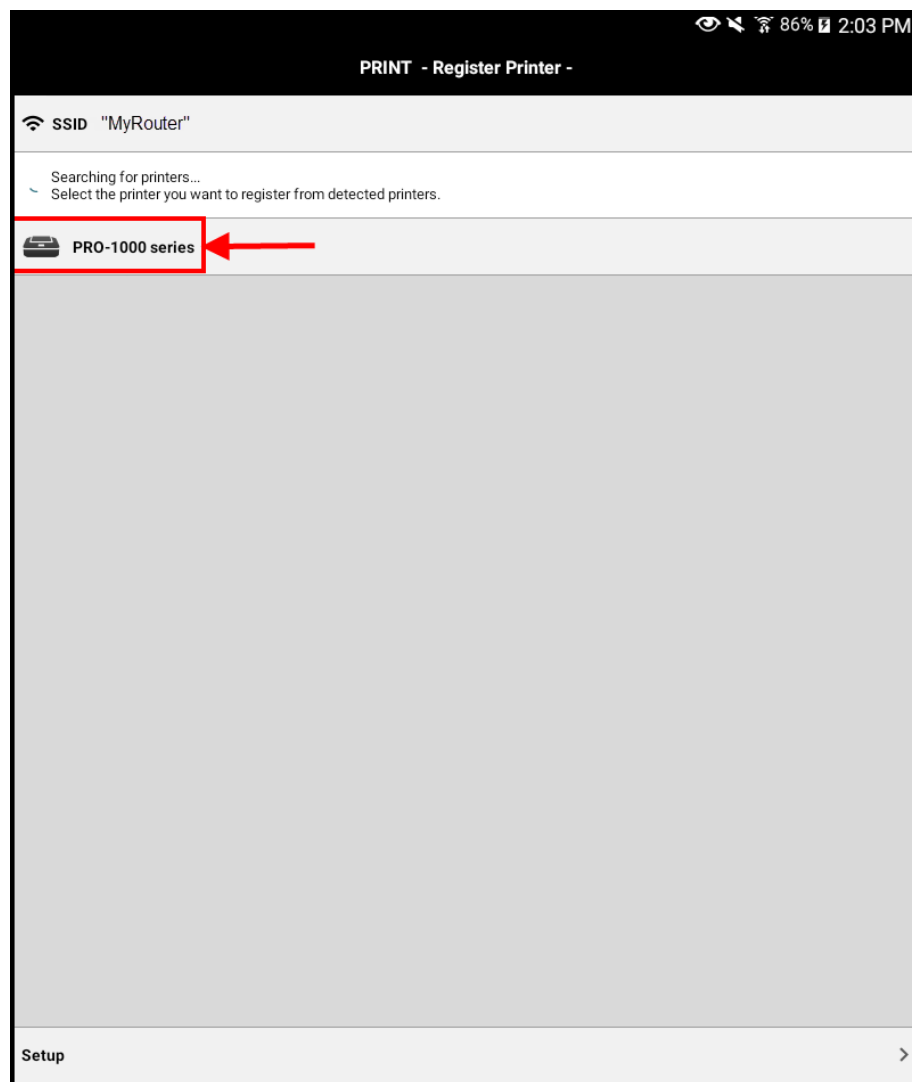


13. Tap OK on the Sent the settings message.



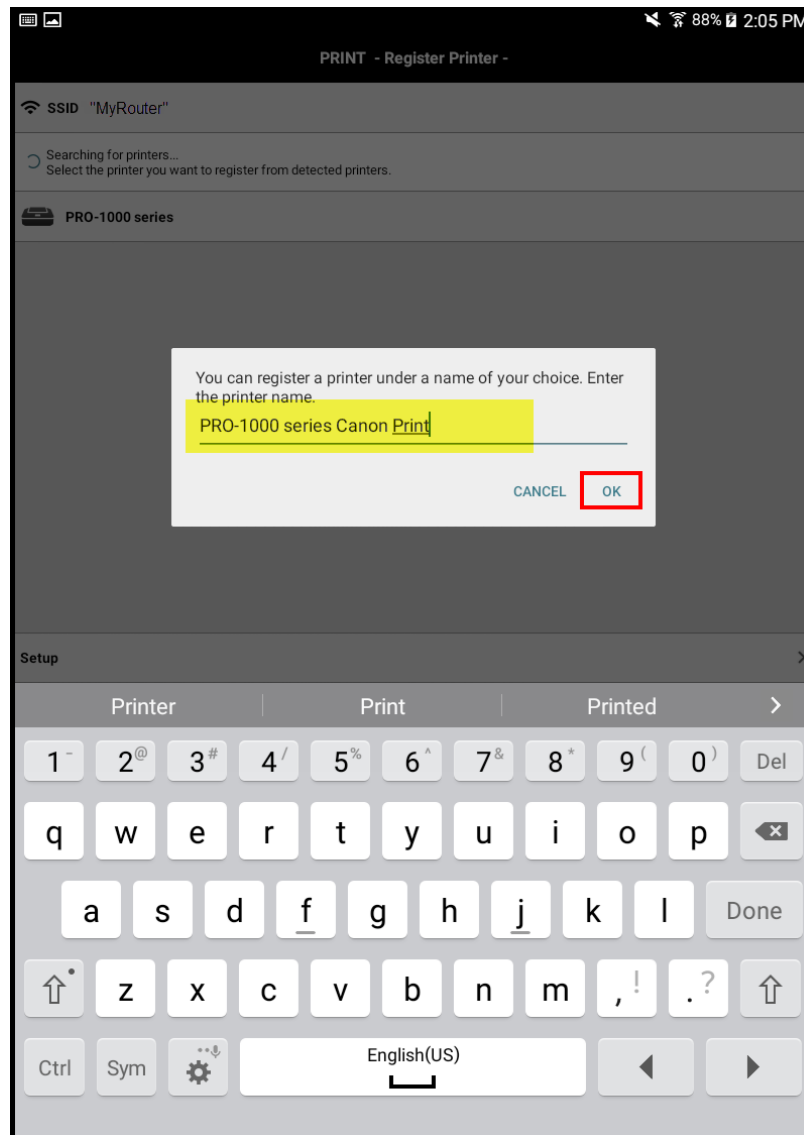


14. Tap the detected printer. Name of printer varies by model.





15. Enter a name for the printer and tap OK.





16. The printer is now ready for use.

