

Getting Your Printer Back On Your Network After A Router Or Network Change

**PIXMA PRO-10
Windows and Mac OS**

If any of the following situations exist:

- You have replaced your Router or Access Point
- You want to use a different wireless network
- Router settings have been changed.

Please complete the following steps to apply the new configuration settings to your printer.

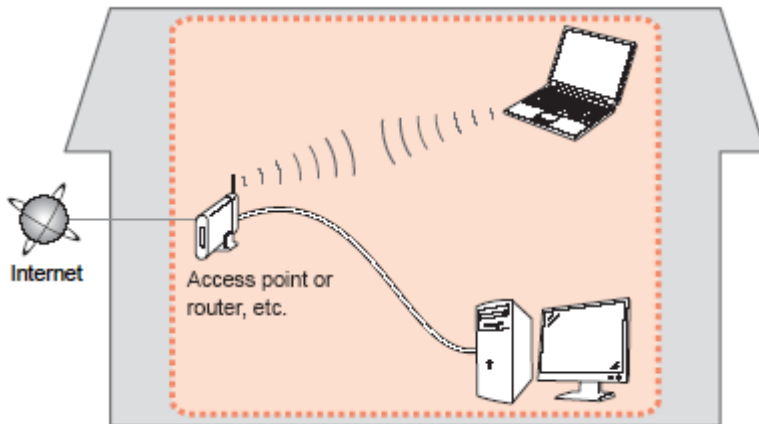
Preparing to Connect My Printer To My Network

[<< Previous](#)

[Next >>](#)

Network Requirements

Before connecting the machine to the network, make sure that configuration of the computer and access point or router is complete, and that the computer is connected to the network.



Wireless Connection

Before connecting the machine to the network, the computer needs to be connected to the network. Make sure that configuration of the computer and access point or router is complete.

Connect the PIXMA PRO-10 to Your Wireless Network

To re-establish communication on the network after changing the router / Access Point or when connecting to a different network, the settings on the printer need to be changed

Simply insert the Setup CD-ROM that came with your printer into your CD-ROM drive and proceed through the easy to follow instructions On the following screen, select the Start Setup Again option

Change Connection Method

Change the connection method between the printer and computer from USB to LAN or from LAN to USB.

Add Software

Select software to add or reinstall it.

Start Setup Again

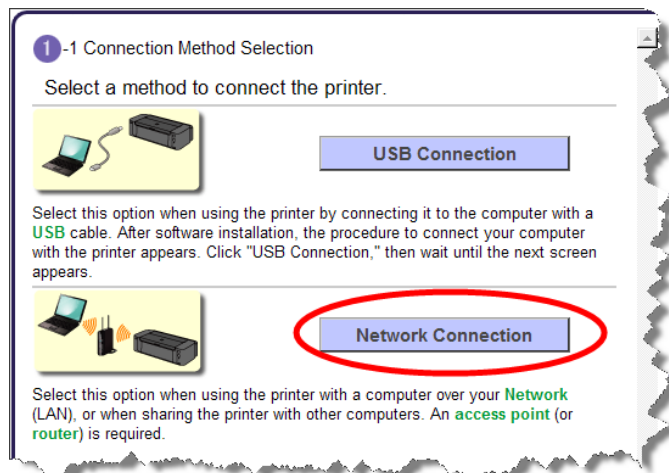
Start again from the initial installation to connection.

Connecting to the Network

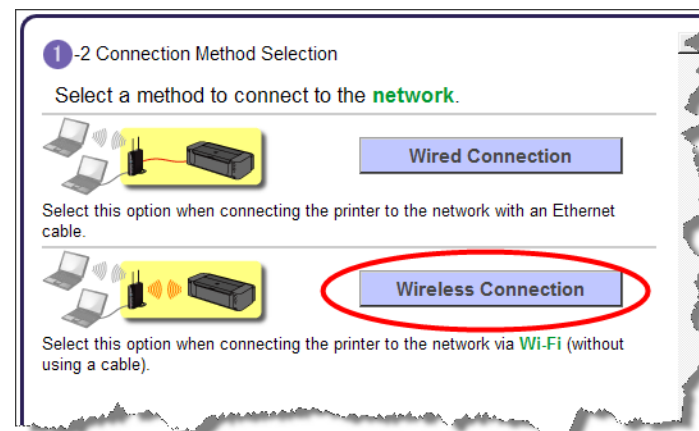
<< Previous

Next >>

On the Connection Method Selection screen, be sure to select **Network Connection**.



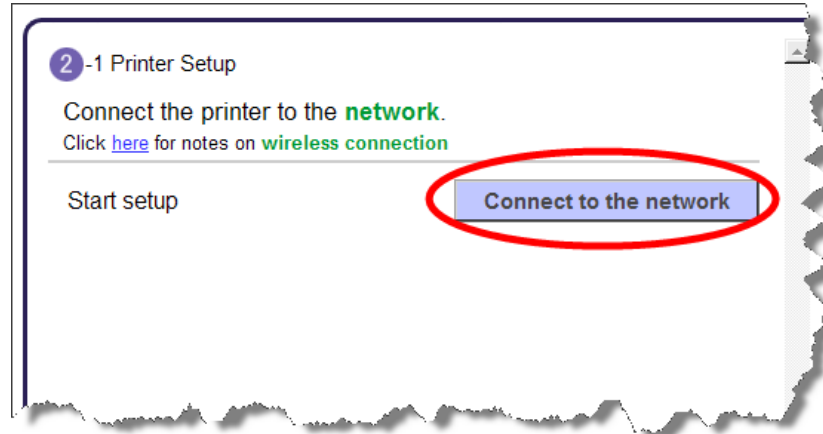
On the next Connection Method Selection screen, be sure to select **Wireless Connection**.



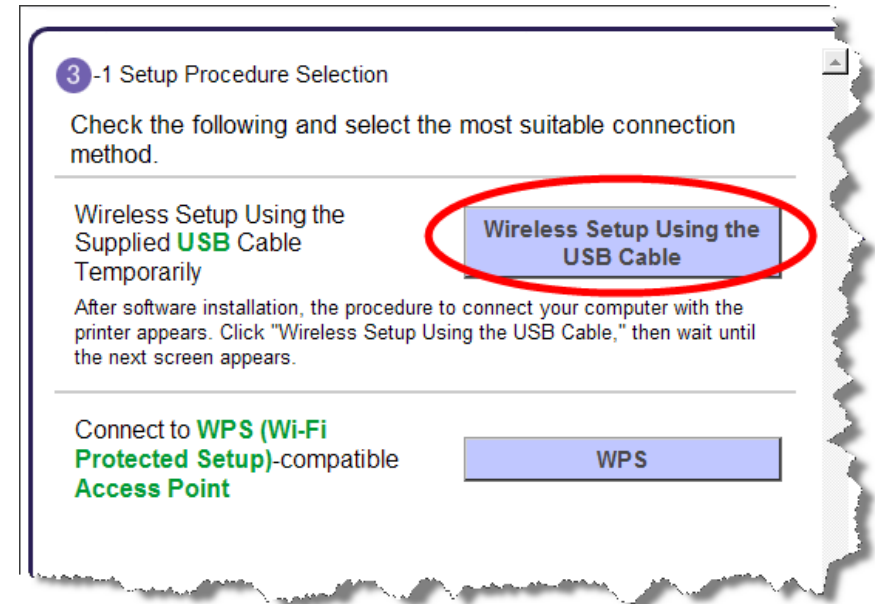
When the Preparation for Connection screen appears, make sure the printer is turned on, then click **Next**.



When the Printer Setup screen appears, click **Connect to the Network**. You will be setting up the printer the same way as a first-time setup.

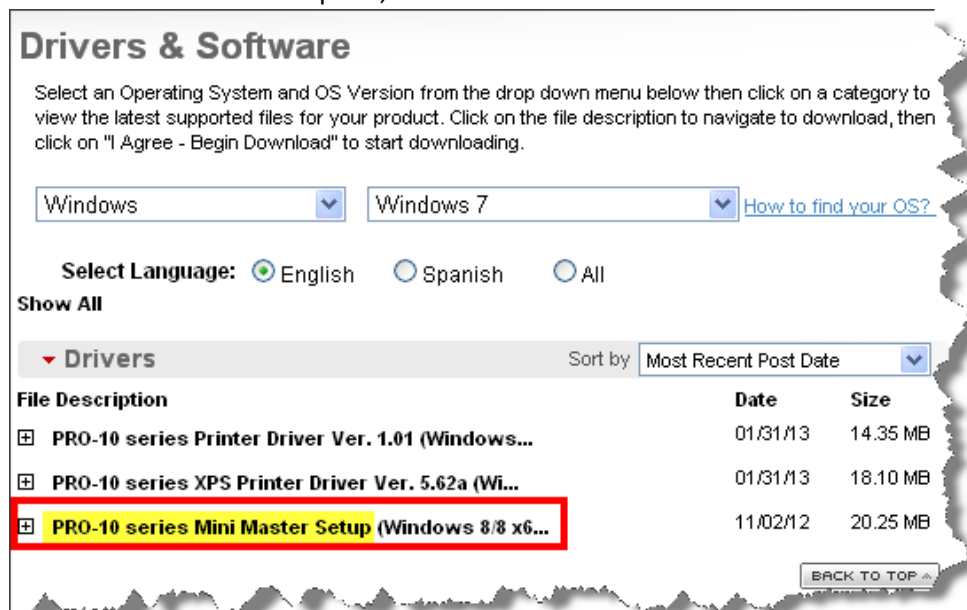


Select **Wireless Setup Using the USB Cable**. This brings up the 'Software Installation List' screen. Since you will have already installed the desired software during your first installation, it will not be necessary to re-install all the software. Click the **Clear All** button. This will leave just the 'IJ Printer Driver' checked. Click **Next** and continue through the installation process following the on-screen prompts.



If you can't find your CD-ROM, you may download the PRO-10 series Mini Master Setup, which includes the same step-by-step installation as the CD-ROM, by following the instructions below:

1. [Click here to access the PRO-10 Drivers & Software page.](#)
2. Select the operating system and version of your computer (see example below).
3. Expand the 'Drivers' section, if necessary, by clicking the red triangle.
4. Click on 'PRO-10 series Mini Master Setup...'
5. After reading the details and disclaimer, click 'I Agree – Begin Download' and save the file to your computer.
6. Once the download is complete, double-click the file from its download location to begin the installation.



Drivers & Software

Select an Operating System and OS Version from the drop down menu below then click on a category to view the latest supported files for your product. Click on the file description to navigate to download, then click on "I Agree - Begin Download" to start downloading.

Windows Windows 7 [How to find your OS?](#)

Select Language: English Spanish All

Show All

Drivers Sort by Most Recent Post Date

File Description	Date	Size
<input type="checkbox"/> PRO-10 series Printer Driver Ver. 1.01 (Windows...	01/31/13	14.35 MB
<input type="checkbox"/> PRO-10 series XPS Printer Driver Ver. 5.62a (Wi...	01/31/13	18.10 MB
<input type="checkbox"/> PRO-10 series Mini Master Setup (Windows 8/8 x6...	11/02/12	20.25 MB

7. Follow the same instructions as when using the Setup CD-ROM. See [page 4](#).