



[Next >>](#)

Installing Your Multifunction to Your Network for the First Time

PIXMA MX452

Mac OS

Installing Your Multifunction to Your Network for the First Time

PIXMA MX452
Mac OS

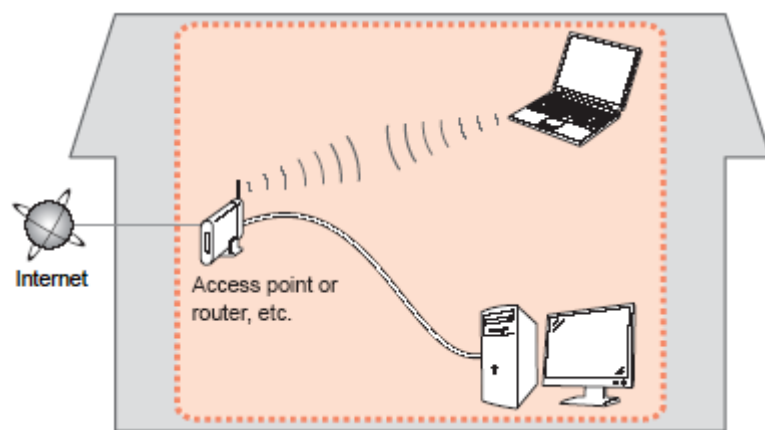
Preparing to Connect My Multifunction to My Network	3
Network Requirements	3
Important Information You Need Before Adding Your Multifunction	4
Download Software for Canon Products	5
Connecting the Printer to Your Access Point	10
Adding the Printer	18
Completing the Installation	20
Canon IJ Network Scanner Selector EX	21

Preparing to Connect My Multifunction To My Network

[<< Previous](#)[Next >>](#)

Network Requirements

Before connecting the machine to the network, make sure that configuration of the computer and access point or router is complete, and that the computer is connected to the network.



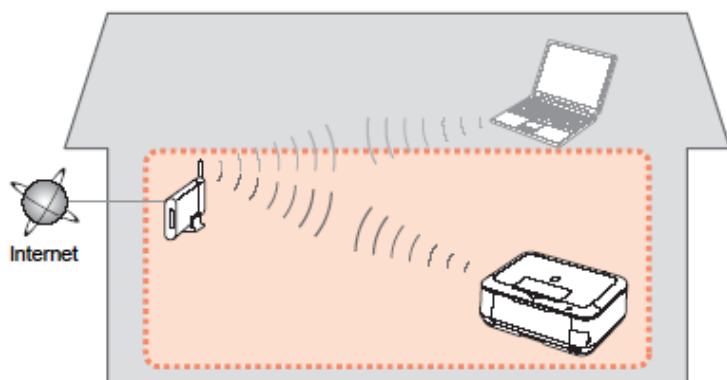
Notes on Network Connection

- The configuration, router functions, setup procedures and security settings of the network device vary depending on your system environment. For details, refer to your device's instruction manual or contact its manufacturer.
- The machine cannot be used over a wireless and wired connection at the same time.

Wireless Connection

Connect to your network environment over a wireless connection.

Preparing to Connect My Multifunction To My Network

[<< Previous](#)[Next >>](#)

An "Ad-hoc connection," which establishes a direct connection to the computer over a wireless connection without using an access point, is not supported.

Be sure to prepare an access point.

Important Information You Need Before Adding Your Multifunction

The following information is required to connect to your access point or router.

- **Access Point Name/Network Name:**
Also referred to as **SSID**. A name to identify the specific access point.
- **Network Key:**
Also referred to as encryption key, WEP key or WPA/WPA2 passphrase, Pre-Shared key.
A password required to set to prevent unauthorized access to communication.
Check your access point or router for the following information, and then write it down.
- **Wi-Fi Protected Setup (WPS) Access Point / Router:**
When wireless mode is activated on the printer, it will automatically search for a WPS capable access point. If discovered, the printer's display will notify you to press and hold down the WPS button on the access point. If a WPS capable access point is not detected, continue the install using the Standard setup procedure.
- Do not connect the supplied USB cable until you are prompted to do so during the installation.

NOTE: For details on how to check the following information, refer to the manual of your access point or router, or contact its manufacturer.

Download Software for Canon Products

[<< Previous](#)[Next >>](#)

Installing the Driver

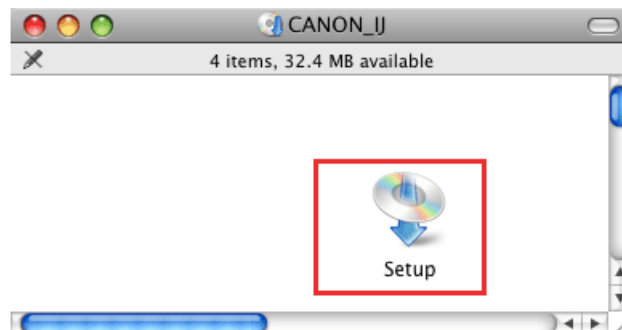
To use the machine by connecting it to a computer, software including the drivers need to be copied (installed) to the computer's hard disk. The installation process takes about 20 minutes. (The installation time varies depending on the computer environment or the number of applications to be installed.) We recommend using the **Setup CD-ROM** for installation.

Step One

Turn on the computer, then insert the **Setup CD-ROM** into the CD-ROM drive.

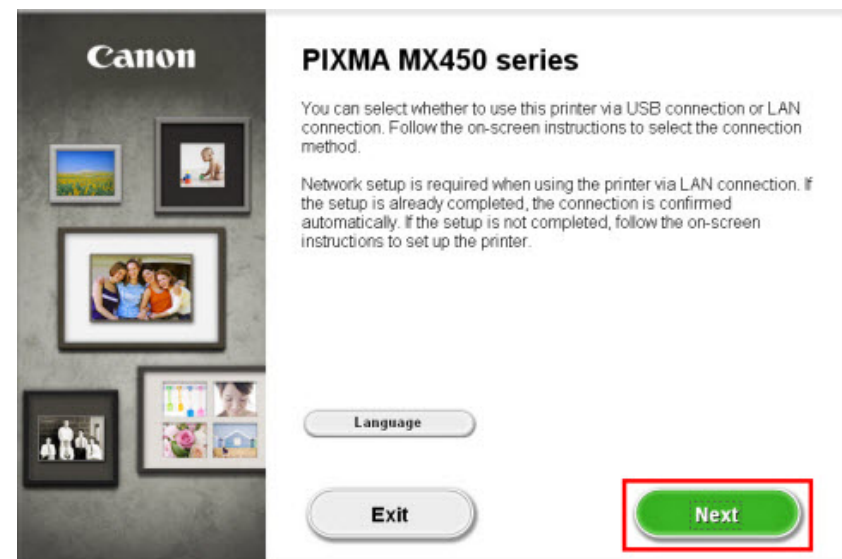
Double-click the **Setup** icon of the CD-ROM folder to proceed to the following screen.

If the CD-ROM folder does not open automatically, double-click the CD-ROM icon on the desktop.



Step Two

On the opening screen select **Next**.



Download Software for Canon Products

[<<Previous](#)[Next>>](#)

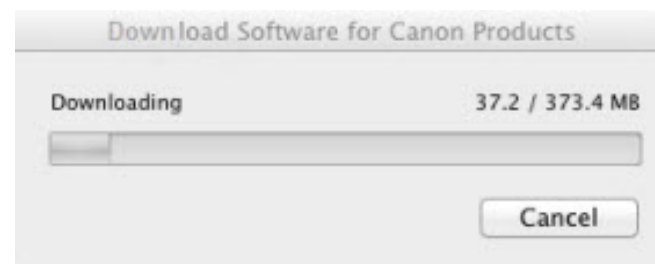
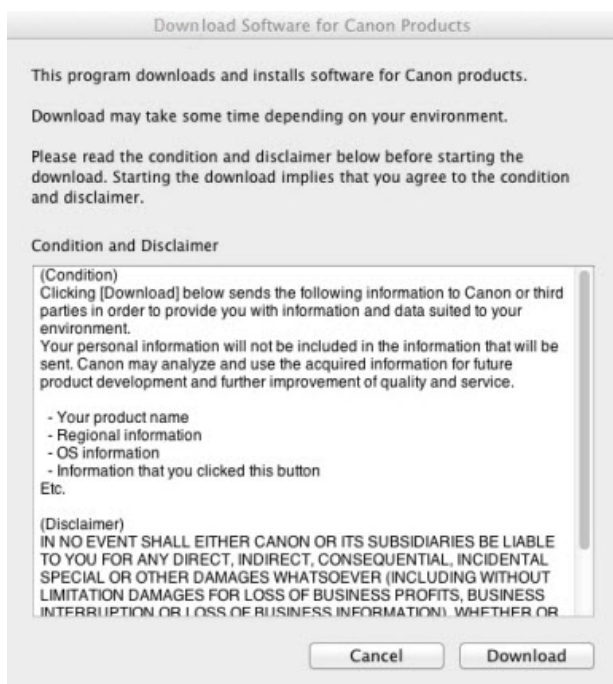
A program to assist in downloading the Canon drivers and software will appear. When the download is complete, it is recommended to save the file in case you need to run the installation again.

Step Three

On the **Download Software for Canon Products** window, click **Download**.

Note:

A progress bar will appear.



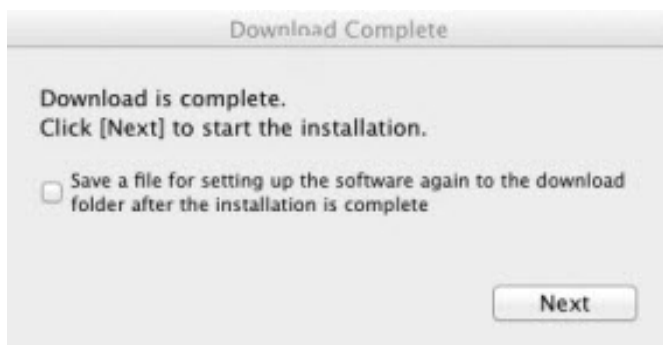
Download Software for Canon Products

[<<Previous](#)[Next>>](#)

At the **Download Complete** dialog, it is recommended to save the download file in case you need to run this install again in the future.

Step Four

On the **Download Complete** window, click on the check box to save the file.



Step Five

Confirm the file name appears and then click **Next**.



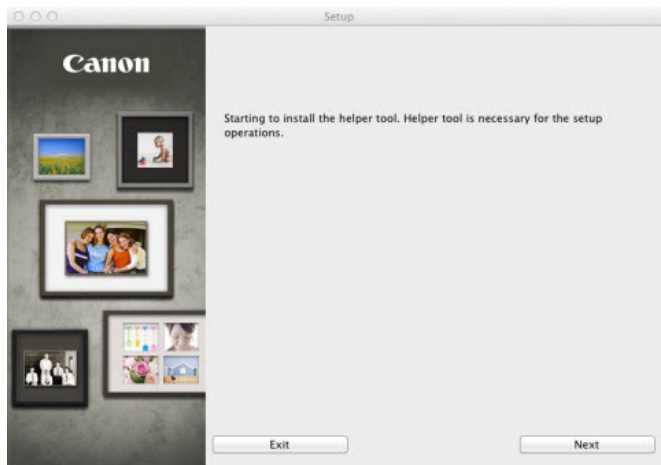
Download Software for Canon Products

[<<Previous](#)[Next>>](#)

Confirm your place of residence at the **Setup** windows to proceed.

Step Six

On the **Setup** window to start the **Helper Tool**, click **Next**.



Step Seven

Select **USA, Canada, Latin America** radio button and then click **Next**.



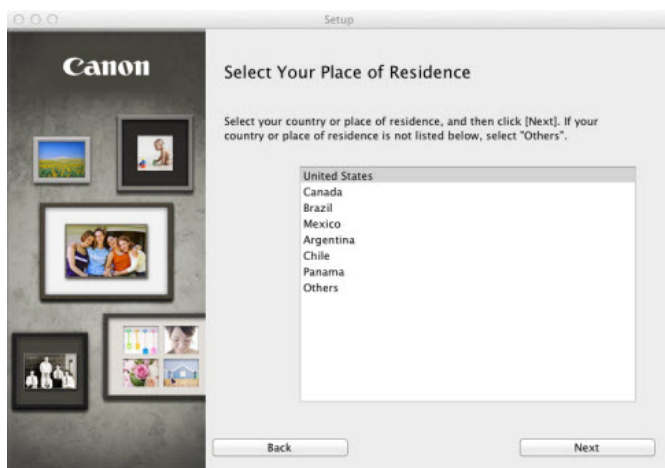
Download Software for Canon Products

[<<Previous](#)[Next>>](#)

After selecting your place of residence, on the **Setup** windows, ensure **MP Drivers** and **Canon IJ Network Tool** are selected to begin software installation. You must also agree to the License Agreement window.

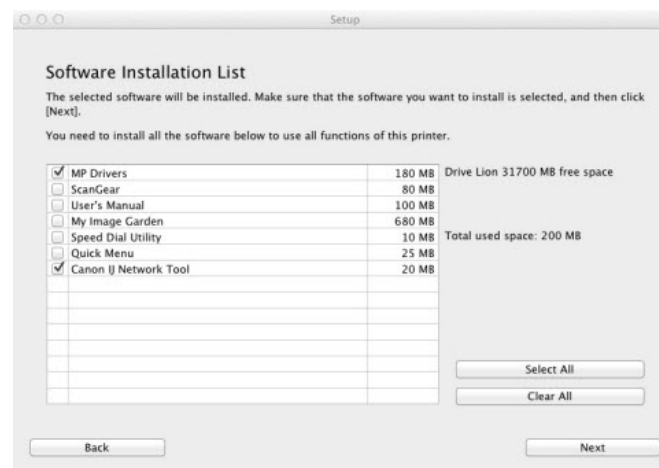
Step Eight

On the **Setup** window, select United States and then click **Next**.



Step Nine

On the **Software Installation List** window, confirm **MP Drivers** and **Canon IJ Network Tool** are selected and then click **Next**.



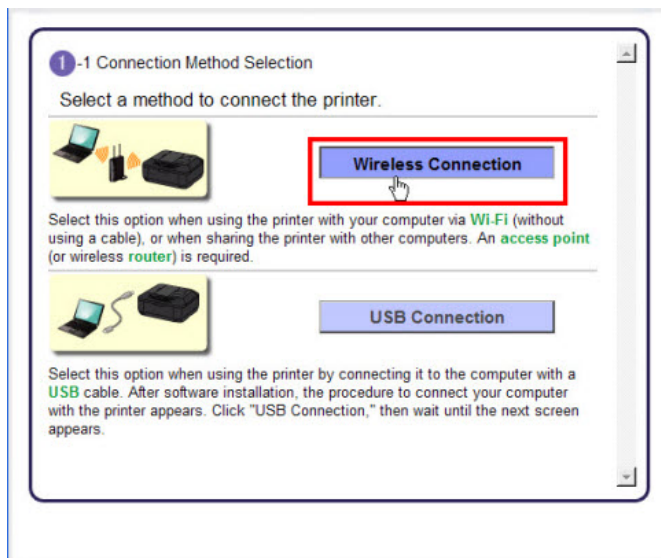
Connecting the Printer to Your Access Point

[<<Previous](#)[Next>>](#)

On the next screens, an interactive Setup Guide will appear on your computer screen. In most cases it will include instructions for you to perform on the printer's operation panel. Perform these steps before proceeding to the next setup guide window. Select (click) the appropriate button on the setup guide window to go to the next step.

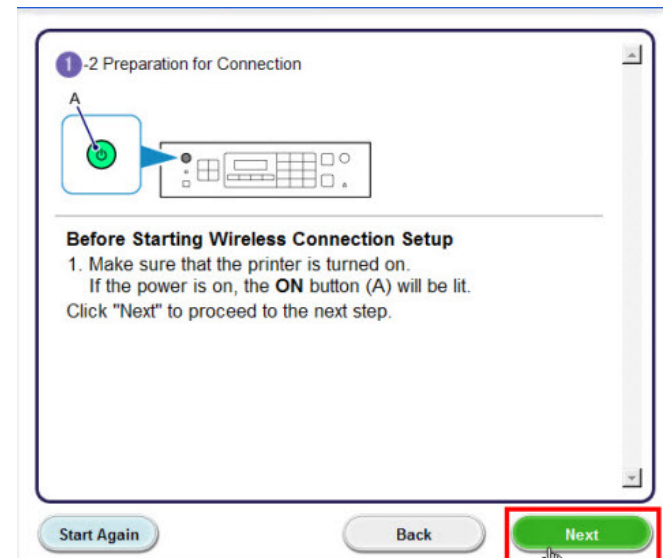
Step One

On the **Connection Method Selection** window, click **Wireless Connection**.



Step Two

Press the **ON** button on the printer to power it on and then click **Next** on the setup guide.

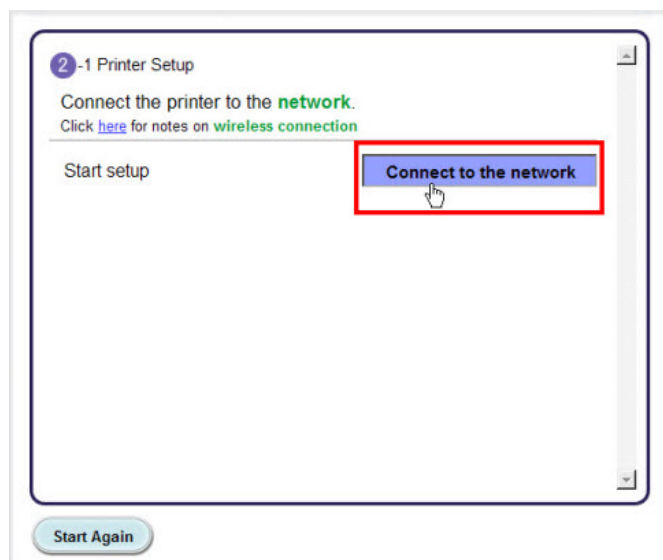


Connecting the Printer to Your Access Point

[<<Previous](#)[Next>>](#)

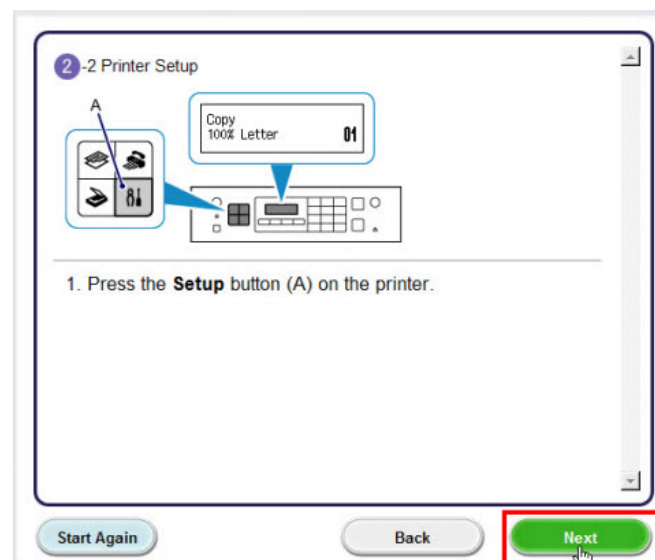
Step Three

On 2-1 **Printer Setup**, click **Connect to the network**.



Step Four

On 2-2 **Printer Setup**, press the Setup button (illustrated by (A)) and then click **Next**.

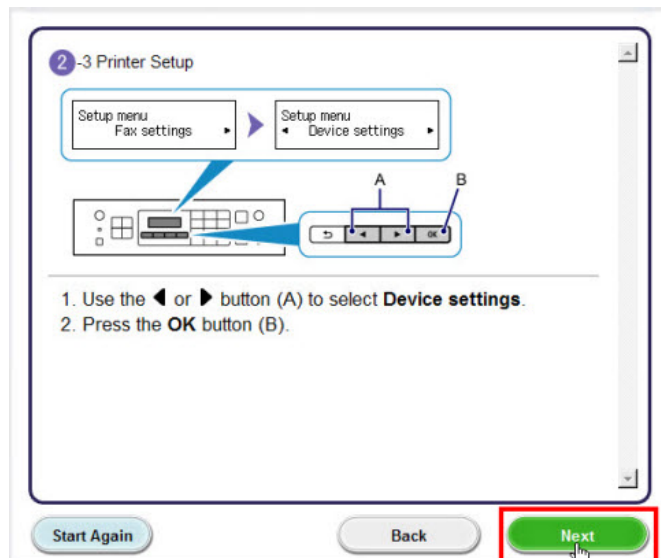


Connecting the Printer to Your Access Point

[<<Previous](#)[Next>>](#)

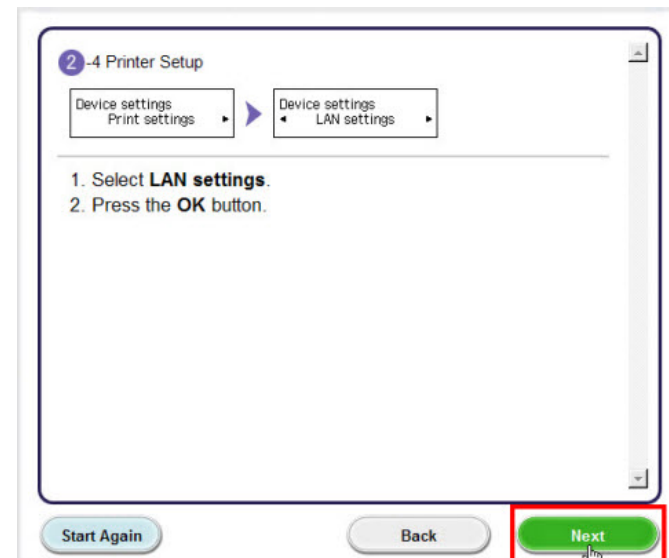
Step Five

On 2-3 **Printer Setup**, press the left or right arrow to select **Device settings**. Press **OK** button and then click **Next** on the setup guide.



Step Six

On 2-4 **Printer Setup**, press the left or right arrow to select LAN settings. Press **OK** button and then click **Next** on the setup guide.



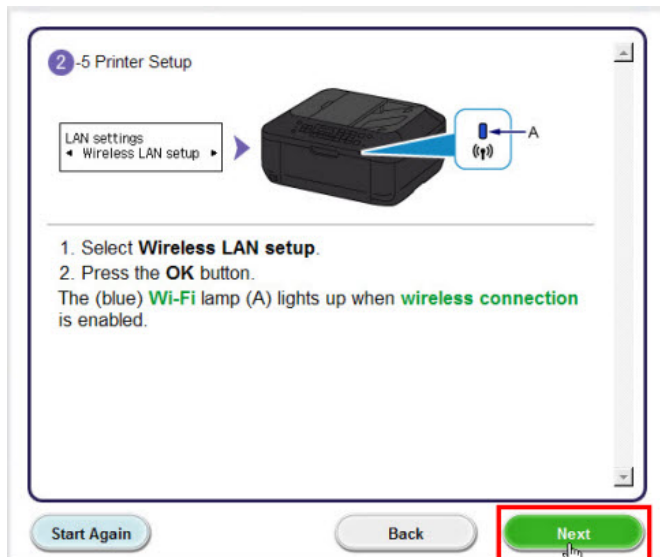
Connecting the Printer to Your Access Point

[<<Previous](#)[Next>>](#)

Step Seven

On 2-5 **Printer Setup**, press the left or right arrow to select **Wireless LAN setup** and then press the OK button.

The Wi-Fi light will light up blue.



IMPORTANT:

When Wi-Fi is first enabled on the printer, it will automatically search for a Wi-Fi Protected Setup (WPS) access point. If a WPS access point is detected, a scrolling message (like the one shown below) will appear for you to press the WPS button on your access point. If you are unsure where the WPS button is located or if your access point supports this technology, press the **Stop** on the printer to proceed with the install using **Standard setup** method.

Press WPS button about :

Note:

The instructions in this document will install the software for wireless LAN using **Standard setup**.

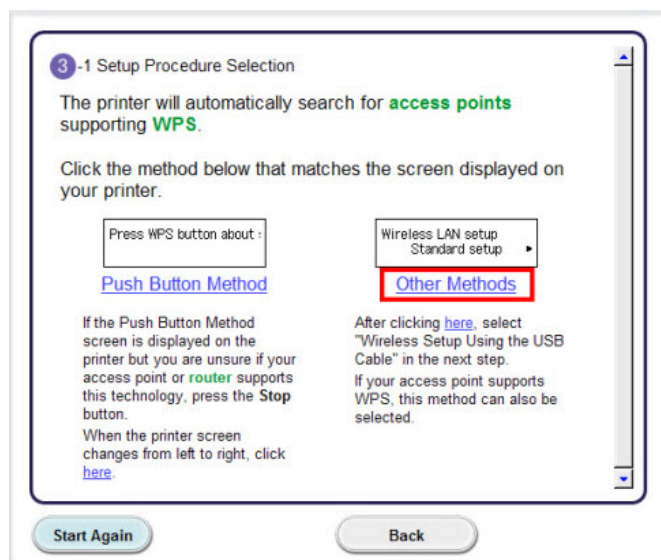
To proceed with **WPS** method, follow the instructions on the setup guide window of your computer screen.

Connecting the Printer to Your Access Point

[<<Previous](#)[Next>>](#)

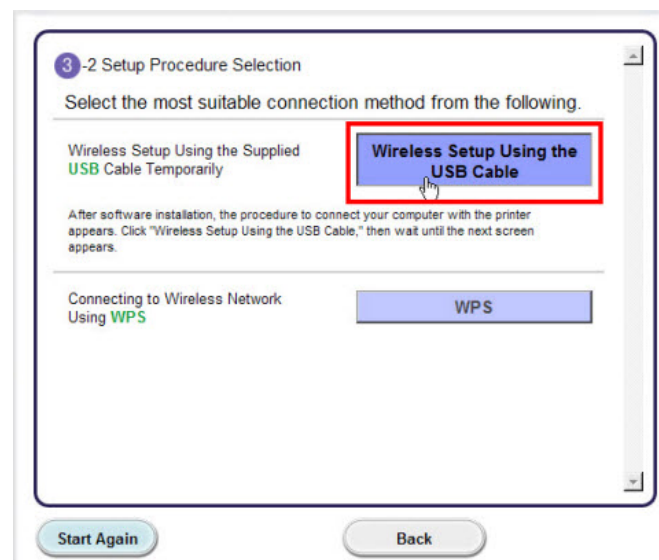
Step Eight

On 3-1 **Setup Procedure Selection** window, click **Other Methods**.



Step Nine

On 3-2 **Setup Procedure Selection** window, click **Wireless Setup Using the USB Cable**.



Connecting the Printer to Your Access Point

[<<Previous](#)[Next>>](#)

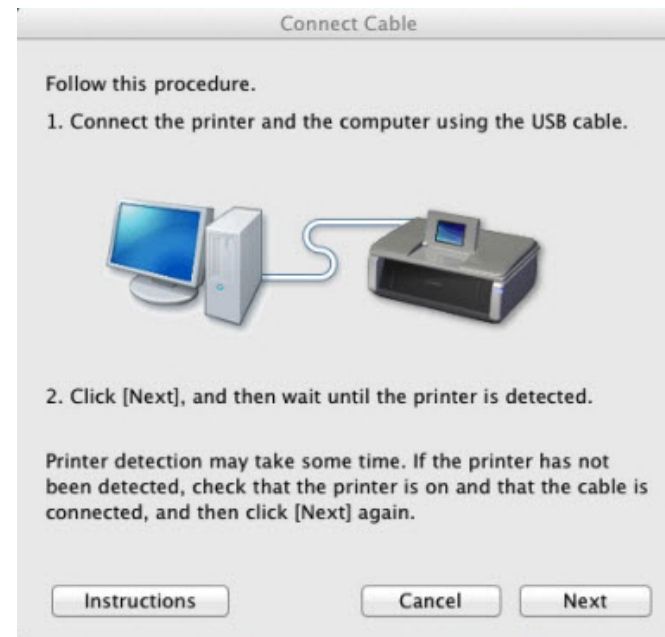
Step Ten

At **Set Up New Printer** dialog box, ensure the supplied USB cable is available and then click **Next**.



Step Eleven

At **Connect Cable** window, connect the printer and computer with the USB cable.



Connecting the Printer to Your Access Point

[<<Previous](#)[Next>>](#)

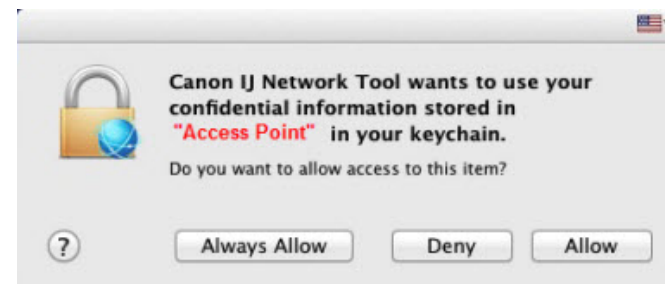
Step Twelve

At **Confirm Connection Access Point** dialog box, confirm your network's name (or SSID) appears and then click **Yes**.



Step Thirteen

When prompted to allow **Canon IJ Network Tool** use your confidential information, click **Always Allow**.



Connecting the Printer to Your Access Point

[<<Previous](#)[Next>>](#)

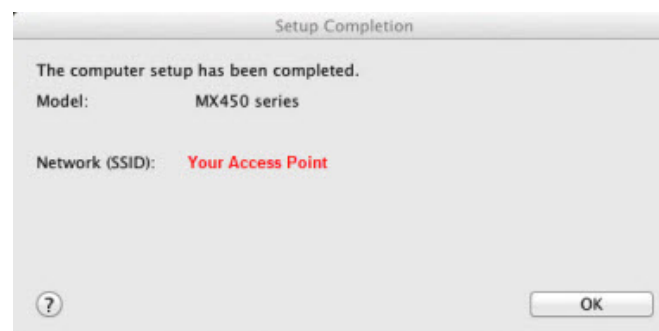
Step Fourteen

At **Disconnect Cable** window, disconnect the USB cable from the printer and computer and then click **Next**.



Step Fifteen

At **Setup Completion** window, confirm your network's SSID appears and then click **OK**.

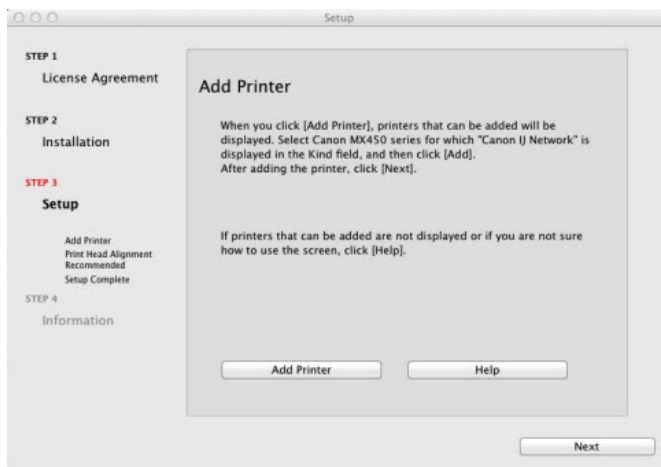


Adding the Printer

[<<Previous](#)[Next>>](#)

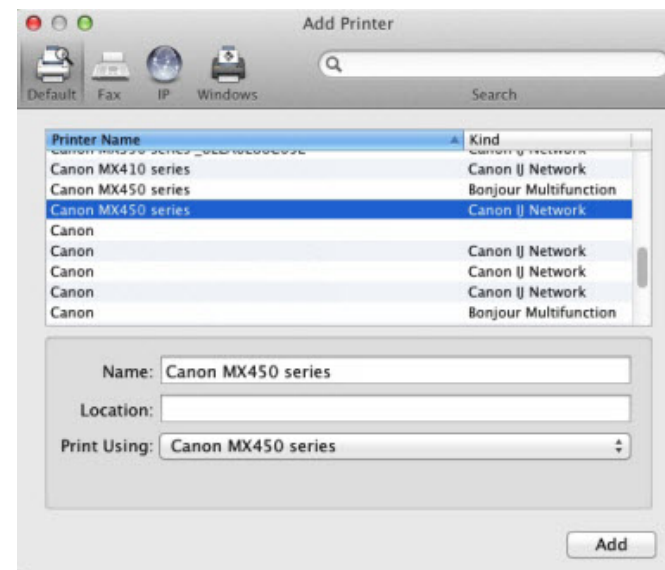
Step Sixteen

At **Add Printer Setup** window, click **Add Printer**.



Step Seventeen

At the **Add Printer** window, select **Canon MX450 series**, which is in line with **Canon IJ Network** under **Kind**, and then click **Add**.



Adding the Printer

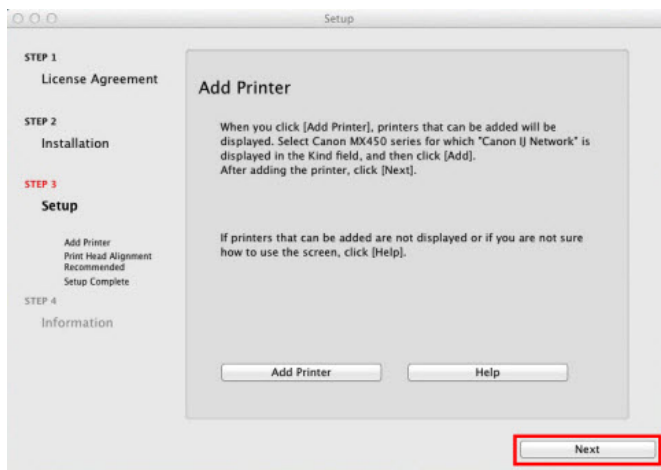
[<<Previous](#)[Next>>](#)

Step Eighteen

You will be returned to **Add Printer Setup** window, now click **Next**.

Continue

Click on the appropriate button to continue with installation.

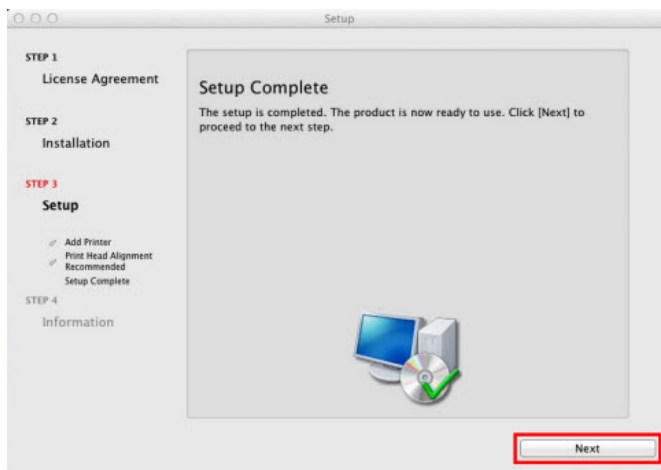


Completing the Installation

[<<Previous](#)[Next>>](#)

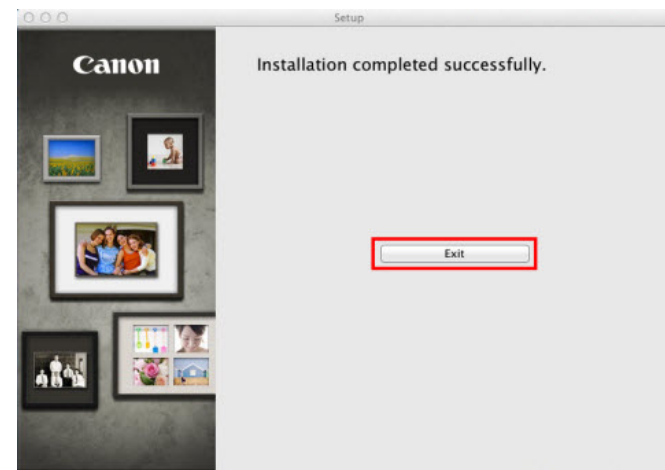
Step Nineteen

At **Setup Complete**, click **Next**.



Step Twenty

When installation is complete click **Exit**.



Canon IJ Network Scanner Selector EX

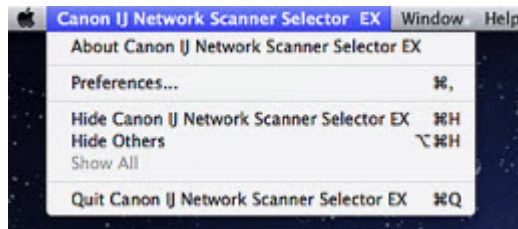
[<<Previous](#)

Note:

IJ Network Scanner Selector EX allows you to select the printer to be used for scanning over a network from your computer or the operation panel.

Starting Canon IJ Network Scanner Selector EX

Click **Canon IJ Network Scanner Selector EX** in the menu bar to display the menu.



If **IJ Network Scanner Selector EX** is not running, from the **Go** menu of Finder, select **Applications**, then double-click the **Canon Utilities** folder, **IJ Network Scanner Selector EX** folder, then **Canon IJ Network Scanner Selector EX** icon.

Network Scanner

Select **Canon MX450 series** radio button and then click **OK**.

Click **Scan-from-Operation-Panel-Settings** button and click the appropriate button to enable scanning from the operation panel.

