



# **Installing Your Printer to Additional Computers on Your Network**

**SELPHY CP910**

**Windows OS**

# Installing Your Printer to Additional Computers on Your Network

SELPHY CP910

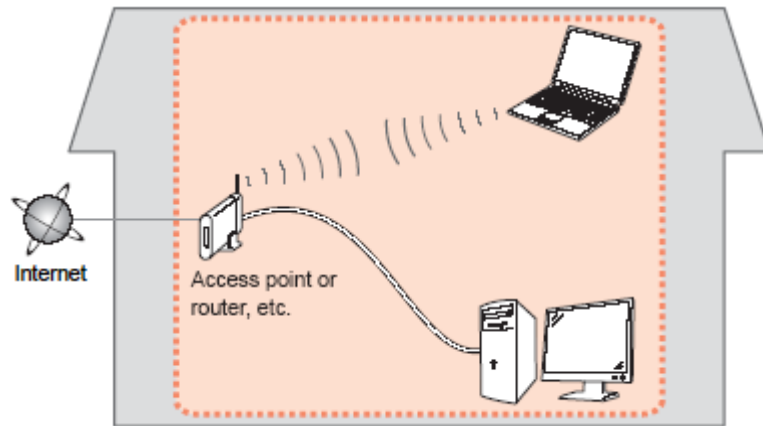
Windows OS

<b>Preparing to Connect My Printer to My Network</b>	<b>3</b>
Network Requirements	3
Notes on Wireless Connection	4
<b>Installing the Drivers</b>	<b>5</b>

# Preparing to Connect My Printer To My Network

## Network Requirements

Before connecting the printer to the network, make sure that the configuration of the computer and access point (or router) is complete, and that the computer is connected to the network.

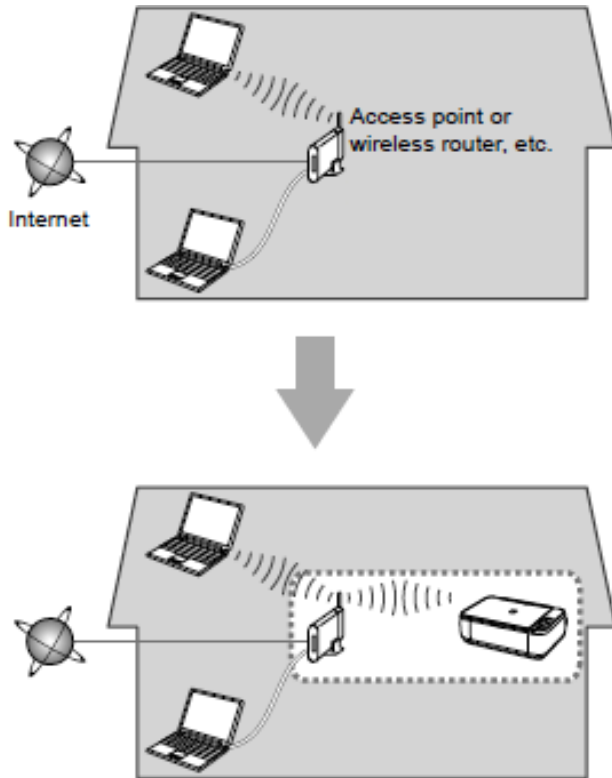


## Supported Wi-Fi Standards

<b>Standards</b>	IEEE 802.11b/g
<b>Supported Channels</b>	1 – 11
<b>Transmission Methods</b>	DSSS (IEEE 802.11b) and OFDM (IEEE 802.11g)
<b>Security</b>	No security, 64- and 128-bit WEP (open system authentication), WPA-PSK (TKIP), WPA-PSK (AES), WPA2-PSK (TKIP), and WPA2-PSK (AES)

# Preparing to Connect My Printer To My Network

## To My Network



An "Ad-hoc connection," which establishes a direct connection to the computer over a wireless connection without using an access point, is not supported.

### Notes on Network Connection

- The configuration, router functions, setup procedures and security settings of the network device vary depending on your system environment. For details, refer to your device's instruction manual or contact its manufacturer.
- In an office setup, consult your network administrator
- If you connect to a network that is not protected with security measures, there is a risk of disclosing data such as your personal information to a third party.
- Place the machine and computer on the same network segment.

# Installing the Drivers

## Installing the Printer Driver (Windows)

1. Insert the CD-ROM into the computer's CD drive.

Note: If you don't have your product CD-ROM, you can download the driver from the [SELPHY CP910 Drivers & Software](#) page. After downloading and running the file, skip to [step 6](#).

2. If a windows displaying the CD contents does not display, access the CD by double-clicking on the disc icon in [Computer] or [My Computer].

3. Double-click on the [Driver] folder.

4. Double-click the [32Bit] or [64Bit] folder to match your Windows system type.

Note: You can determine the OS system type by right-clicking [Computer] or [My Computer] and then choosing properties.

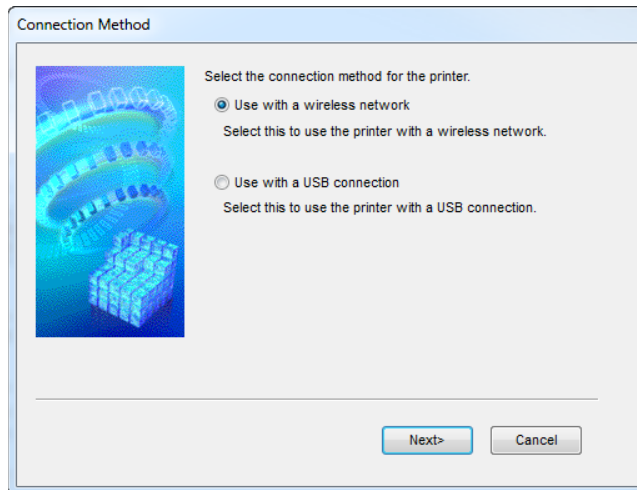
5. Double-click [Setup.exe].

6. Follow the on-screen instructions.

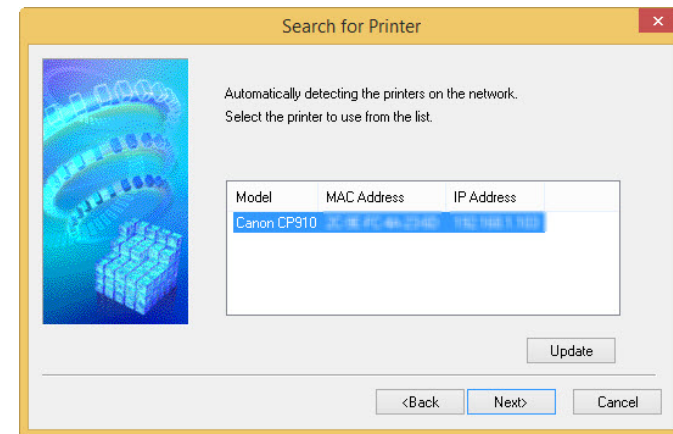
7. When the Connection Method screen (img 5-6) is displayed, select [Use with a wireless network] and click [Next].

8. Choose your printer. Click [Next]. The printer driver is installed.

img 5-6



img 5-7



# Installing the Drivers

## Installation Complete

When you see the following screen, then the printer driver has been installed successfully.

