



Installing Your Printer to Additional Computers on Your Network

SELPHY CP910

Macintosh OS

Installing Your Printer to Additional Computers on Your Network

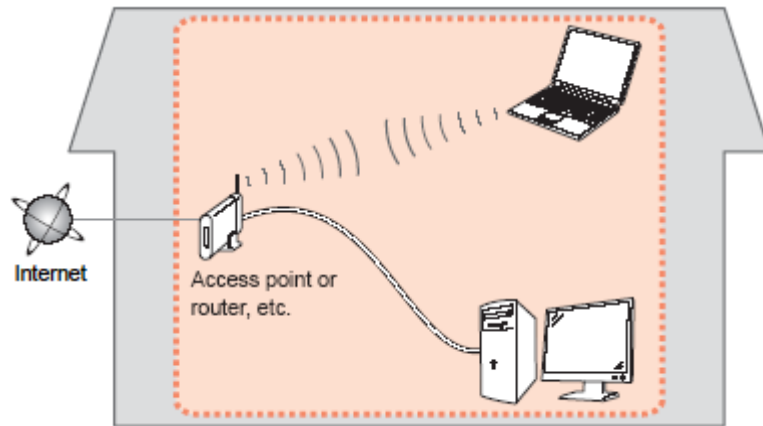
SELPHY CP910
Macintosh OS

Preparing to Connect My Printer to My Network	3
Network Requirements	3
Notes on Wireless Connection	4
Installing the Drivers	5

Preparing to Connect My Printer To My Network

Network Requirements

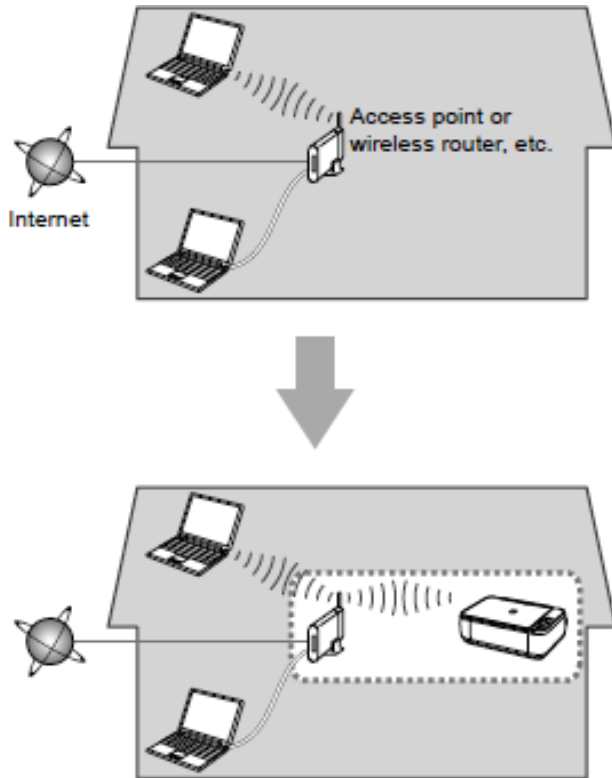
Before connecting the printer to the network, make sure that the configuration of the computer and access point (or router) is complete, and that the computer is connected to the network.



Supported Wi-Fi Standards

Standards	IEEE 802.11b/g
Supported Channels	1 – 11
Transmission Methods	DSSS (IEEE 802.11b) and OFDM (IEEE 802.11g)
Security	No security, 64- and 128-bit WEP (open system authentication), WPA-PSK (TKIP), WPA-PSK (AES), WPA2-PSK (TKIP), and WPA2-PSK (AES)

Preparing to Connect My Printer To My Network



An "Ad-hoc connection," which establishes a direct connection to the computer over a wireless connection without using an access point, is not supported.

Notes on Network Connection

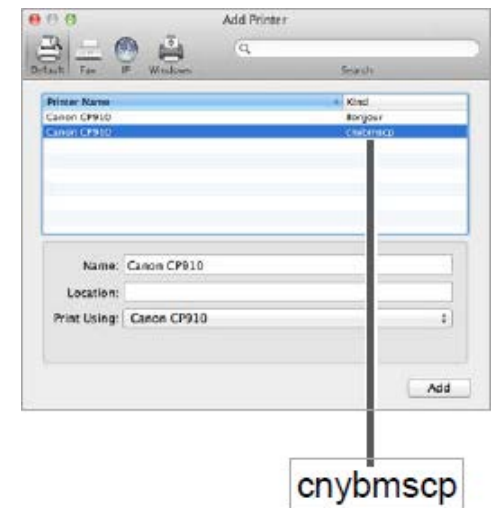
- The configuration, router functions, setup procedures and security settings of the network device vary depending on your system environment. For details, refer to your device's instruction manual or contact its manufacturer.
- In an office setup, consult your network administrator
- If you connect to a network that is not protected with security measures, there is a risk of disclosing data such as your personal information to a third party.
- Place the machine and computer on the same network segment.

Installing the Drivers

Installing the Printer Driver (Macintosh)

1. Insert the CD-ROM into the computer's CD drive.
Note: If you don't have your product CD-ROM, you can download the driver from the [SELPHY CP910 Drivers & Software](#) page. After downloading and running the file, skip to step 5.
2. Double-click the disc icon on the desktop or in the sidebar.
3. Double-click on the [Driver] folder.
4. Double-click the package file.
5. Follow the on-screen instructions to install the printer.
6. When the Connection Method screen (img 5-6) is displayed, select [Use with a wireless network] and click [Next].
7. Choose your printer. Click [Next]. The printer driver is now installed.
8. Next, access [System Preferences] and the [Print & Scan].
9. Click [+] below the list.
10. If a pop-up menu is displayed, click [Add Printer or Scanner] or [Add Other Printer or Scanner].
11. Select the printer named "Canon CP910" (type: "cnybmscp") and click [Add].

img 5-11



Installing the Drivers

Installation Complete

The printer driver installation and setup is now complete.