



# **Getting Your Printer Back On Your Network After A Router Or Network Change**

**SELPHY CP910**

**Macintosh OS**

If any of the following situations exist

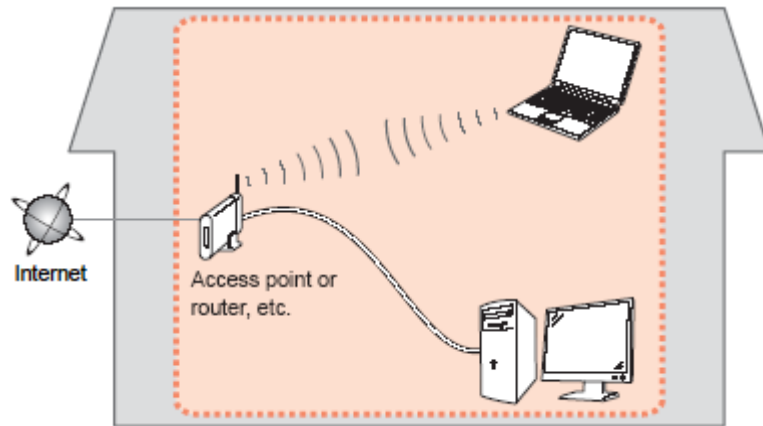
- You have replaced your Router or Access Point
- You want to use a different wireless network
- Router settings have been changed.

Please complete the following steps to apply the new configuration settings to your printer.

# Preparing to Connect My Printer To My Network

## Network Requirements

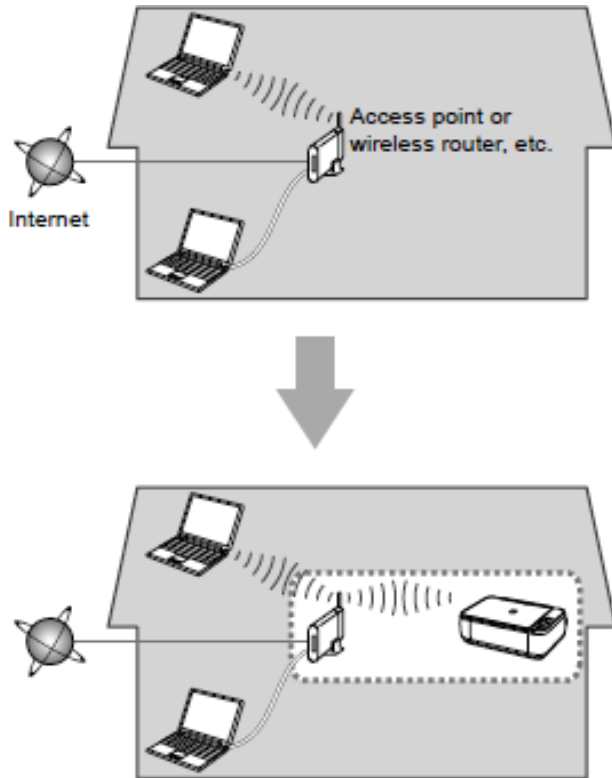
Before connecting the printer to the network, make sure that the configuration of the computer and access point (or router) is complete, and that the computer is connected to the network.



## Supported Wi-Fi Standards

<b>Standards</b>	IEEE 802.11b/g
<b>Supported Channels</b>	1 – 11
<b>Transmission Methods</b>	DSSS (IEEE 802.11b) and OFDM (IEEE 802.11g)
<b>Security</b>	No security, 64- and 128-bit WEP (open system authentication), WPA-PSK (TKIP), WPA-PSK (AES), WPA2-PSK (TKIP), and WPA2-PSK (AES)

# Preparing to Connect My Printer To My Network



An "Ad-hoc connection," which establishes a direct connection to the computer over a wireless connection without using an access point, is not supported.

## Notes on Network Connection

- The configuration, router functions, setup procedures and security settings of the network device vary depending on your system environment. For details, refer to your device's instruction manual or contact its manufacturer.
- In an office setup, consult your network administrator
- If you connect to a network that is not protected with security measures, there is a risk of disclosing data such as your personal information to a third party.
- Place the machine and computer on the same network segment.

# Connecting to the Network

- Connecting to the wireless network router

## Connecting the SELPHY CP910 to Your Access Point (Router)

Connecting the printer to your wireless network is done directly from the printer.

There are two methods to connect the printer to your router depending on the capabilities of your router.

- [WPS-Compatible Access Point \(Router\)](#)
- [Non-WPS Access Point \(Router\)](#)

If you do not know if your router is WPS-Compatible, then you should follow the instructions for the "[Non-WPS Access Point](#)".

# Connecting to the Network

- Connecting to the wireless network router

## WPS-Compatible Access Point Setup

1. The printer should already be in a ready state with the paper cassette and ink cassette loaded. Additionally, there should be no memory cards or USB flash drives connected to the printer.
2. Press the Menu button.
3. Press the Up or Down arrows to select [Wi-Fi Settings]. Press the OK button.
4. Press the Up or Down arrows to select [Connection Settings]. Press the OK button. Press the OK button.
5. Note the printer name. Press the OK button.
6. Press the Up or Down arrows to select [Via Wi-Fi Network]. Press the OK button.



img 4



img 5



img 6



# Connecting to the Network

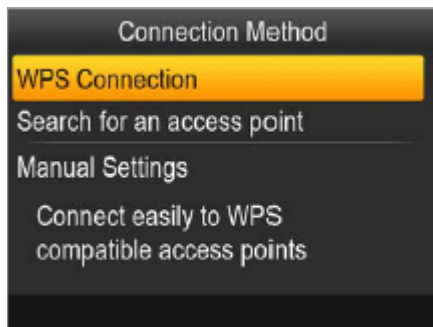
- Connecting to the wireless network router

## WPS-Compatible Access Point Setup (continued)

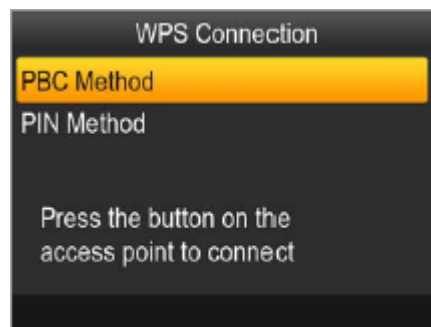
7. Press the Up or Down arrows to select [WPS Connection]. Press the OK button.
8. Press the Up or Down arrows to select [PBC Method]. Press the OK button.
9. The screen in (img 9) is displayed.
10. On your router, press and hold the WPS button for a few seconds and then release it.
11. On the printer, press the OK button.
12. [Connecting] is displayed on the printer. When a connection is made, [Connected to access point] is displayed. Press the OK button.



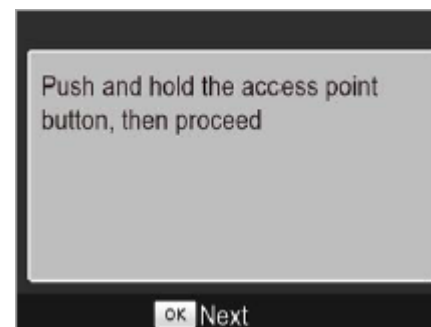
img 7



img 8



img 9



# Connecting to the Network

- Connecting to the wireless network router

## WPS-Compatible Access Point Setup (complete)

When the printer is connected to a router, the main display screen will show the access point (router) name at the top left along with the signal strength.



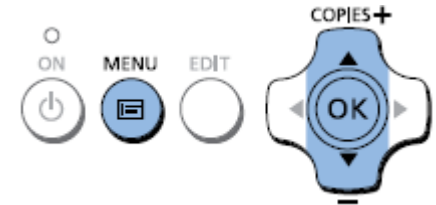


# Connecting to the Network

- Connecting to the wireless network router

## Non-WPS Access Point Setup

1. The printer should already be in a ready state with the paper cassette and ink cassette loaded. Additionally, there should be no memory cards or USB flash drives connected to the printer.
2. Press the Menu button.
3. Press the Up or Down arrows to select [Wi-Fi Settings]. Press the OK button.
4. Press the Up or Down arrows to select [Connection Settings]. Press the OK button. Press the OK button.
5. Note the printer name. Press the OK button.
6. Press the Up or Down arrows to select [Via Wi-Fi Network]. Press the OK button.



img 4



img 5



img 6

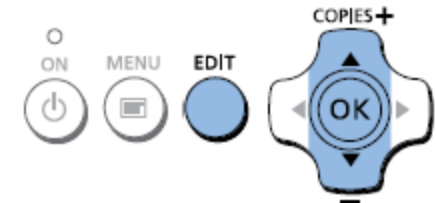


# Connecting to the Network

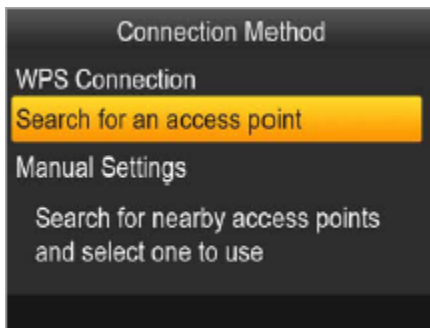
- Connecting to the wireless network router

## Non-WPS Access Point Setup (continued)

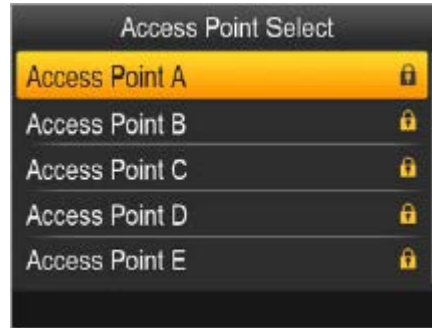
7. Press the Up or Down arrows to select [Search for an access point]. Press the OK button.
8. Press the Up or Down arrows to select your access point (router) name. Press the OK button.
9. Press the EDIT button and then enter the password for your router.
10. Press the Up or Down arrows to select [Connection Settings]. Press the OK button. Press the OK button.
11. Note the printer name. Press the OK button.
12. Press the Up or Down arrows to select [Via Wi-Fi Network]. Press the OK button.



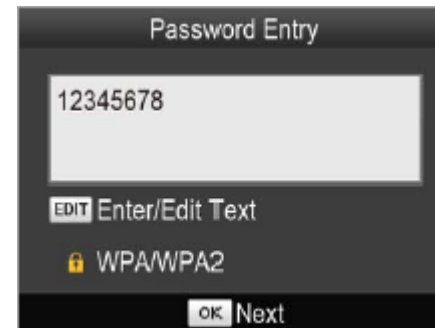
img 7



img 8



img 9



# Connecting to the Network

- Connecting to the wireless network router

## Non-WPS Access Point Setup (complete)

[Connecting] is displayed on the printer. When a connection is made, [Connected to access point] is displayed. Press the OK button.



When the printer is connected to a router, the main display screen will show the access point (router) name at the top left along with the signal strength.

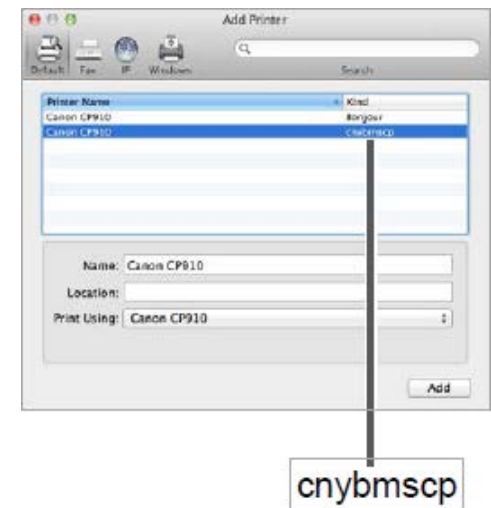


# Installing the Drivers

## Installing the Printer Driver (Macintosh)

1. Insert the CD-ROM into the computer's CD drive.  
Note: If you don't have your product CD-ROM, you can download the driver from the [SELPHY CP910 Drivers & Software](#) page. After downloading and running the file, skip to step 5.
2. Double-click the disc icon on the desktop or in the sidebar.
3. Double-click on the [Driver] folder.
4. Double-click the package file.
5. Follow the on-screen instructions to install the printer.
6. When the Connection Method screen (img 12-6) is displayed, select [Use with a wireless network] and click [Next].
7. Choose your printer. Click [Next]. The printer driver is now installed.
8. Next, access [System Preferences] and the [Print & Scan].
9. Click [+] below the list.
10. If a pop-up menu is displayed, click [Add Printer or Scanner] or [Add Other Printer or Scanner].
11. Select the printer named "Canon CP910" (type: "cnybmscp") and click [Add].

img 12-11



# Installing the Drivers

## Installation Complete

The printer driver installation and setup is now complete.