

Installing Your WiFi capable imageCLASS Product onto Additional Computers

imageCLASS MF5950dw

Mac OS

Installing Your WiFi capable imageCLASS Product onto Additional Computers

imageCLASS MF5950dw
Mac OS

Installing Drivers
Registering the Drivers

[4](#)
[22](#)

Before installing the software drivers will need to be downloaded for the components you wish to install.

Drivers are available [here](#).

Select your OS, then download the components you wish to install.

Available Components

1. Printer Driver
2. Fax Driver
3. Scanner Driver

Please note each component is a separate download.

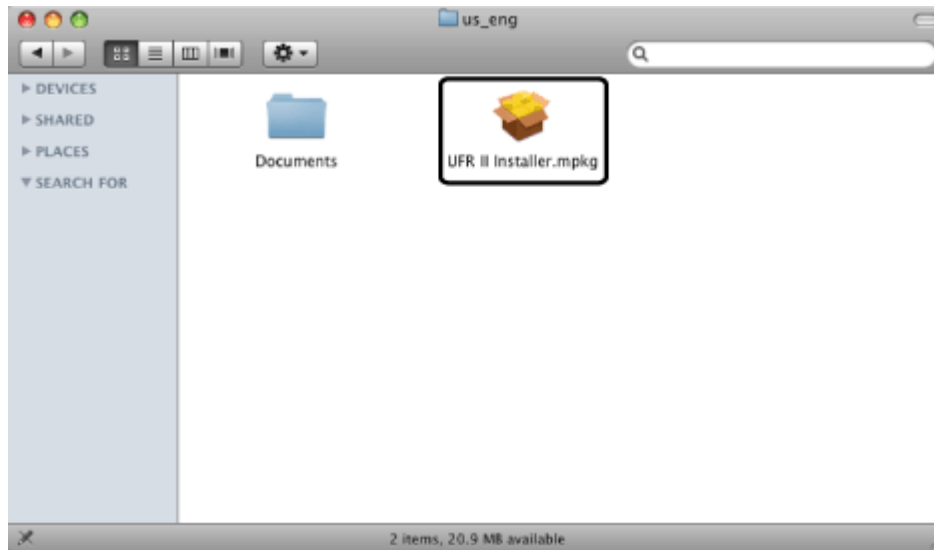
Before using the printer you must install the UFR II printer driver for it.

Important

If an older version of the printer driver has been installed, uninstall the older version before installing the new version.

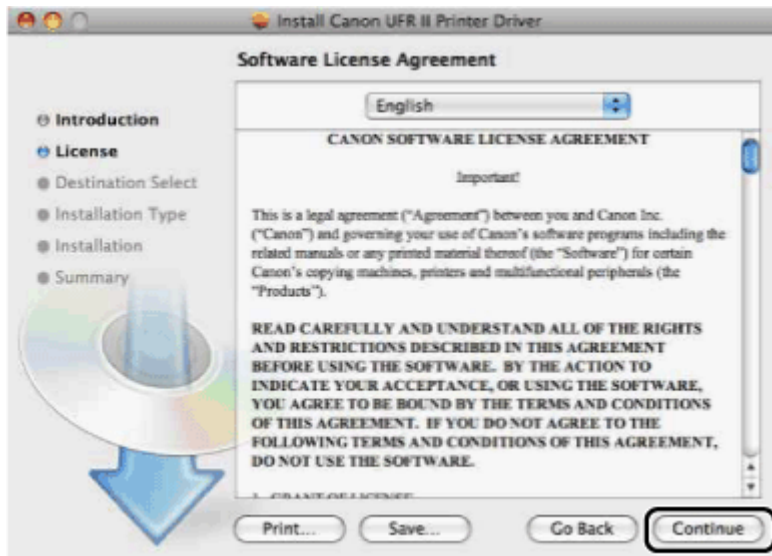
1. Double-click the Printer Driver .dmg to display it's contents.

2. Double-click the [UFR II Installer.mpkg] icon.

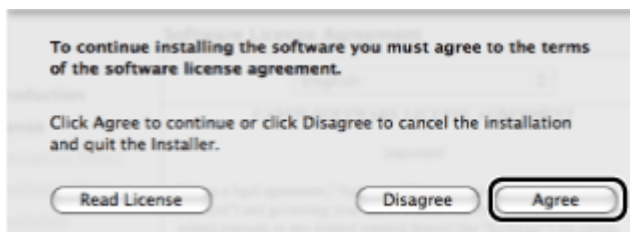


Click [Continue] when the confirmation message appears.
The Installer starts.

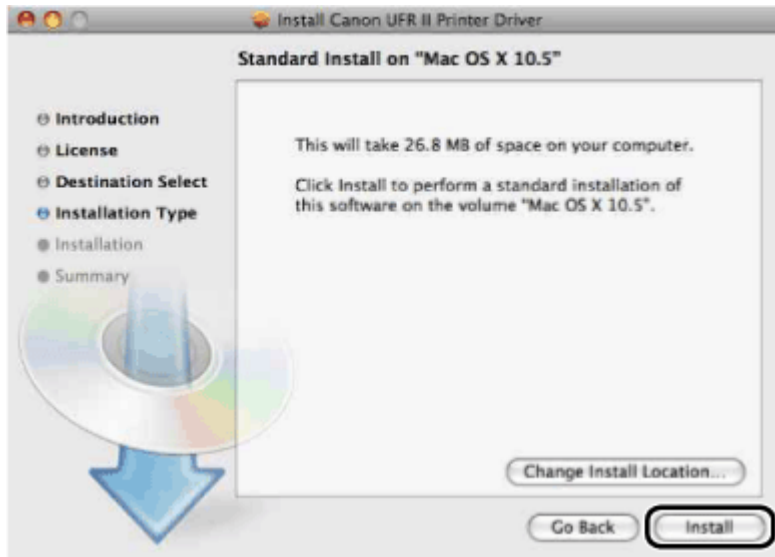
3. Read the software license agreement carefully then click [Continue].



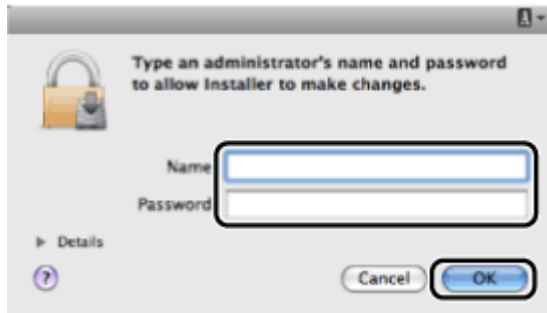
4. If you agree to the terms of the software license agreement, click [Agree].



5. Click [Install].



6. Enter the administrators name and password then click [OK].

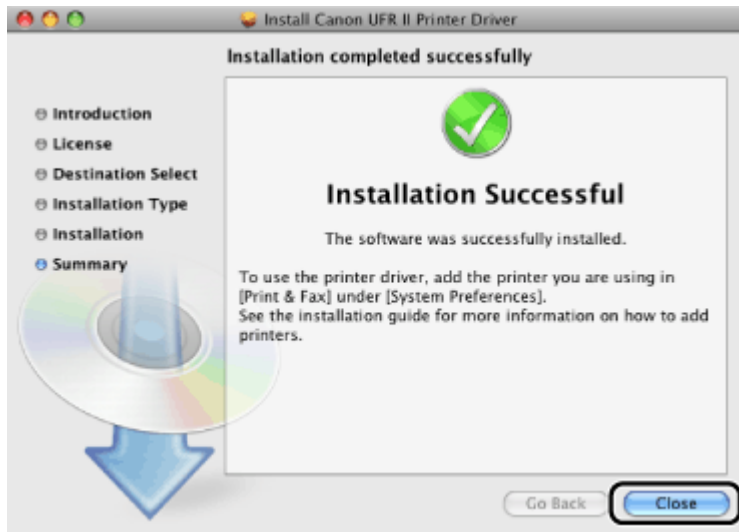


Installation starts.

Note:

Depending on the system environment, the [Authenticate] dialog box may not be displayed. In that case, proceed to next step

7. Click [Close] when the confirmation message below appears.



Installation is complete

Before using the printer driver, you must add the printer in [System Preferences].

[Click here](#) to register the printer in System Preferences.

[Click here](#) to install the Fax Driver

[Click here](#) to install the Scanner Driver.

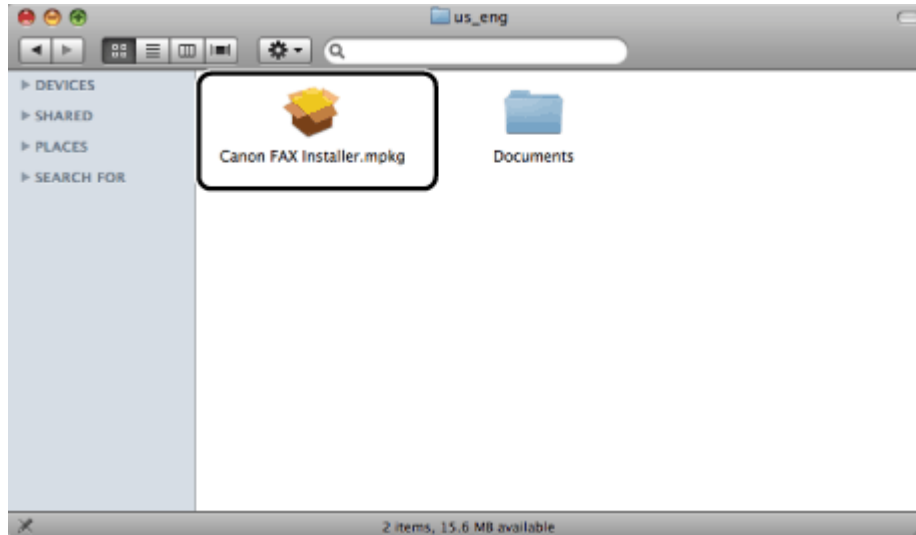
Before using the fax, you must install the fax driver for it.

Important:

- If a older version of the fax driver has been installed, uninstall the older version before installing the new version.
- Close all application software before installing the fax driver.

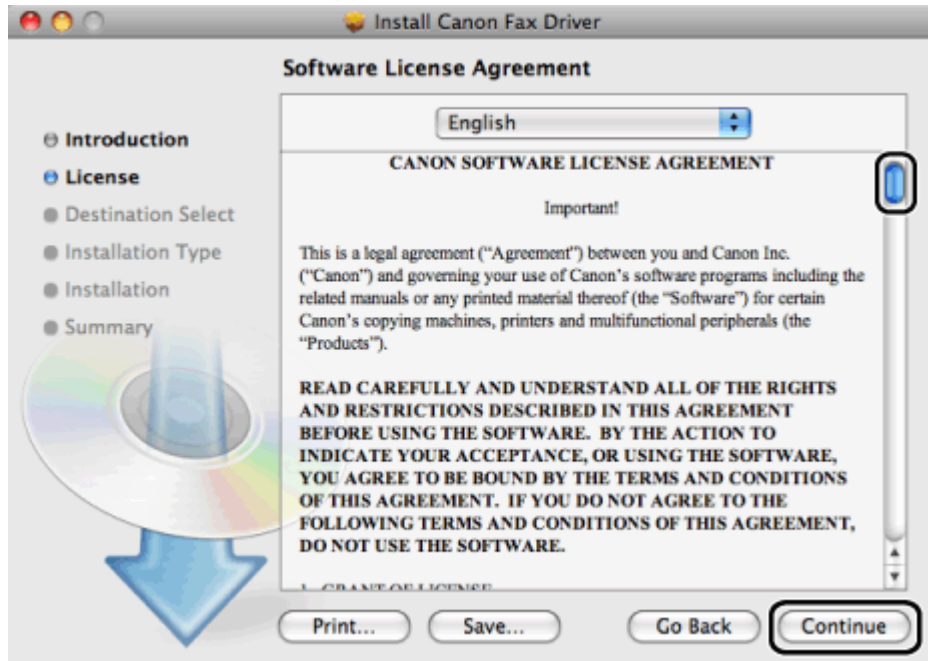
1. Double-click the Fax Driver .dmg to display it's contents.

2. Double-click the [Canon Fax Installer.mpkg].

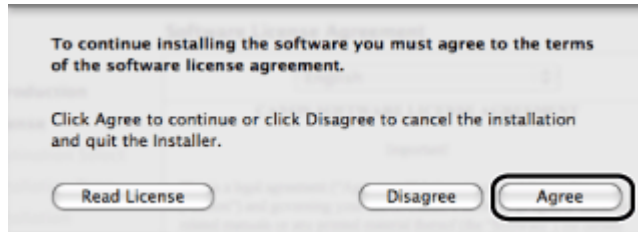


Click [Continue] when the dialog box below appears.
The [Authenticate] dialog is displayed.

3. Read the software license agreement carefully then click [Continue].



4. Click [Agree].



The Installer starts.

5. Click [Install].



6. Enter the administrators name and password then click [OK].



Installation starts.

Note:

Depending on the system environment, the Authenticate dialog box may not be displayed. In that case, proceed to next step.

7. Click [Close] when the confirmation message below appears.



Installation is complete.

Before using the Fax Driver, you must add the fax in [System Preferences].

[Click here](#) to register the printer in System Preferences.

[Click here](#) to register the fax in System Preferences

[Click here](#) to install the Scanner Driver.

Note:

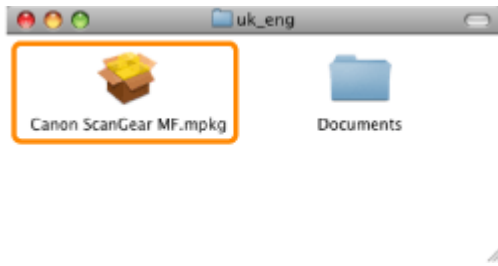
Before installing.

- Perform the following procedures.
- Exit running applications.
- Remove the USB cable that connects the computer and the scanner.

When an older version of the scanner driver is installed, uninstall the older driver.

1. Double-click the Scanner Driver .dmg to display it's contents.

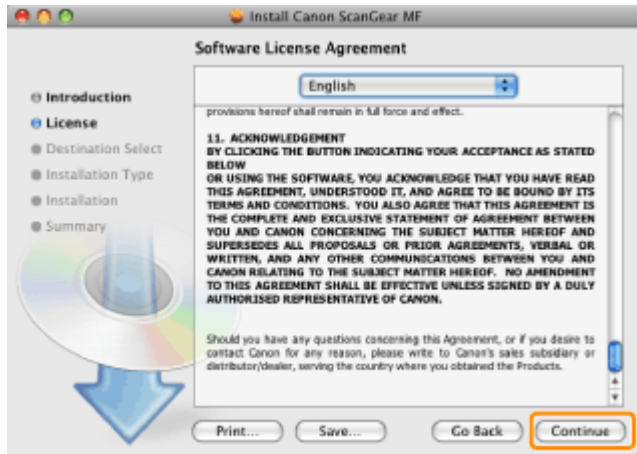
2. Double-click the [Canon Scangear MF.mpkg] ([Canon Scangear MF]) icon.



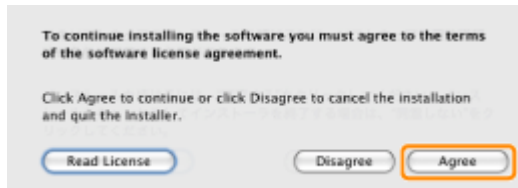
3. Click [Continue].



4. Read the software license agreement carefully then click [Continue].



5. If you agree to the terms of the software agreement then click [Agree].



6. When the following screen appears click [Continue].

The installation location cannot be changed. Click [Continue].



7. Click [Install] or [Upgrade].

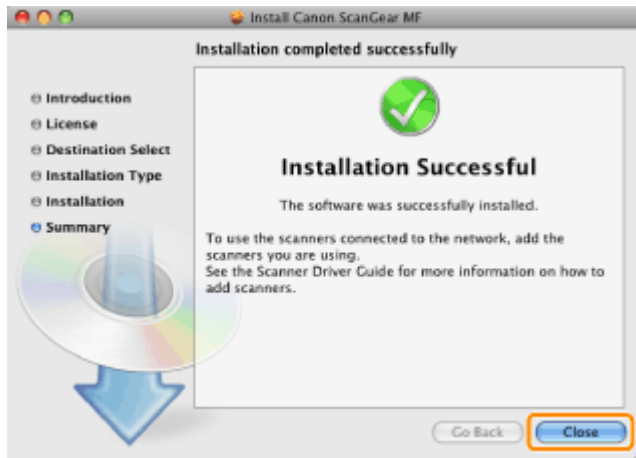


8. When the following screen appears, enter the administrator's name and password then click [OK].



Installation starts.

9. Click [Close].



Installation is complete.

Before using the Scanner Driver, you must register the scanner you are using to the MF Toolbox.

[Click here](#) to register the printer in System Preferences.

[Click here](#) to register the fax in System Preferences

[Click here](#) to register the scanner to the MF Toolbox.

Adding the Printer in the System Preferences

[<< Previous](#)

[Next >>](#)

1. Open [System Preferences] then click [Print & Fax] or [Print & Scan].

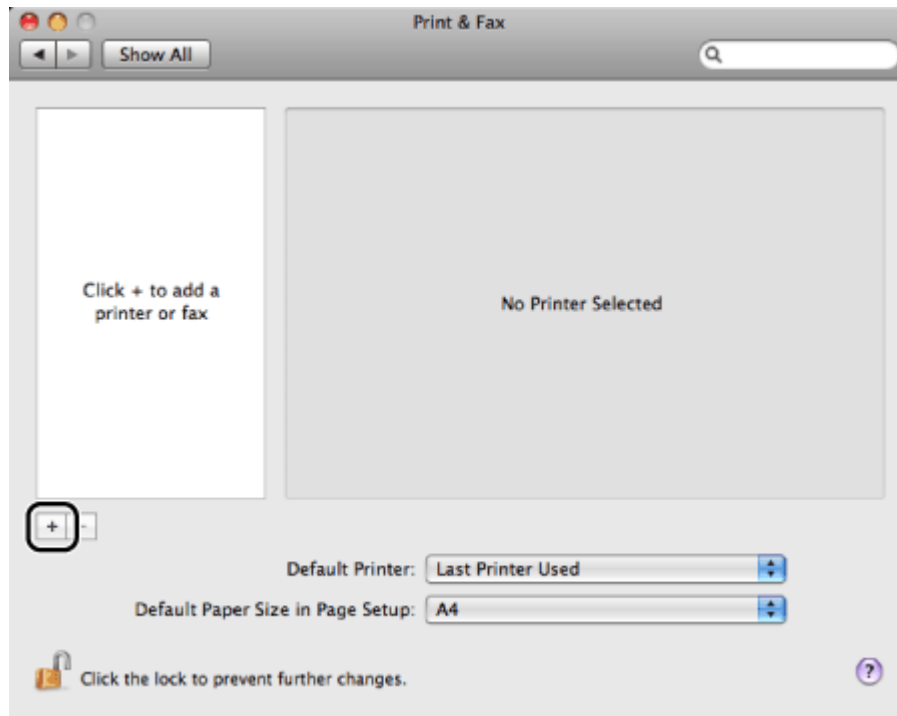


The [Print & Fax] or [Print & Scan] dialog box is displayed.

2. Click the [+] icon.

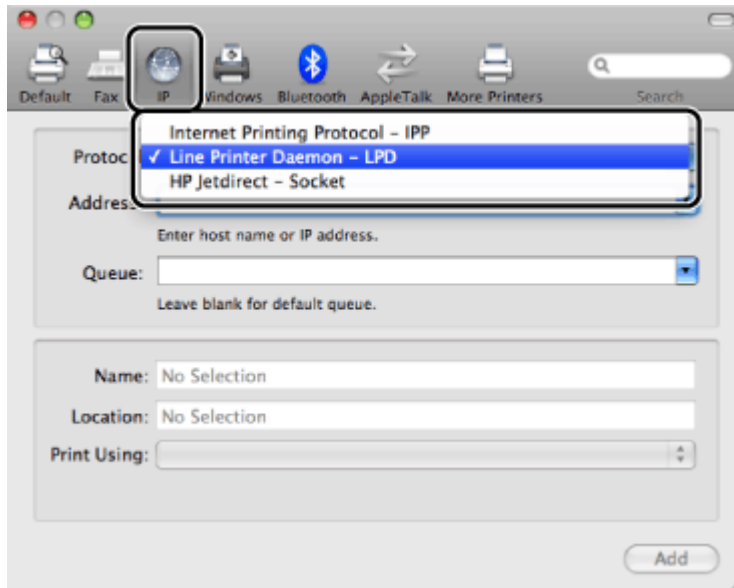
If you are using Mac OS X 10.4.x, click [Print] in the [Print & fax] dialog box to display the [Printing] pane then click the [+] icon.

If you are using OS X Lion, and there are shared printers or Bonjour supported printers on the network, click [+] and select [Add Other Printer or Scanner].



The printer registration dialog box is displayed.

3. Select [IP] or [IP Printer] then select [Line Printer Daemon – LPD] from [Protocol].

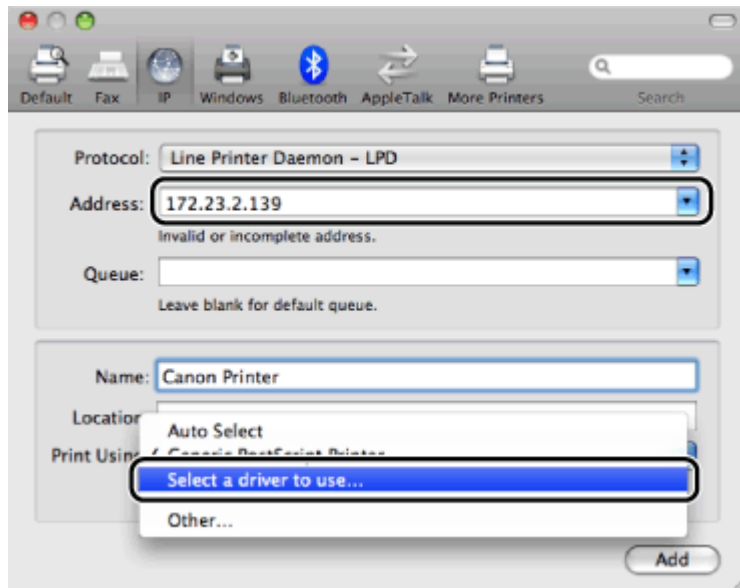


Note:
[IPP (Internet Printing Protocol)] is not supported.

4. Enter the IP address of the printer you are going to use in [Address], then select [Select a driver to use] from [Print Using].

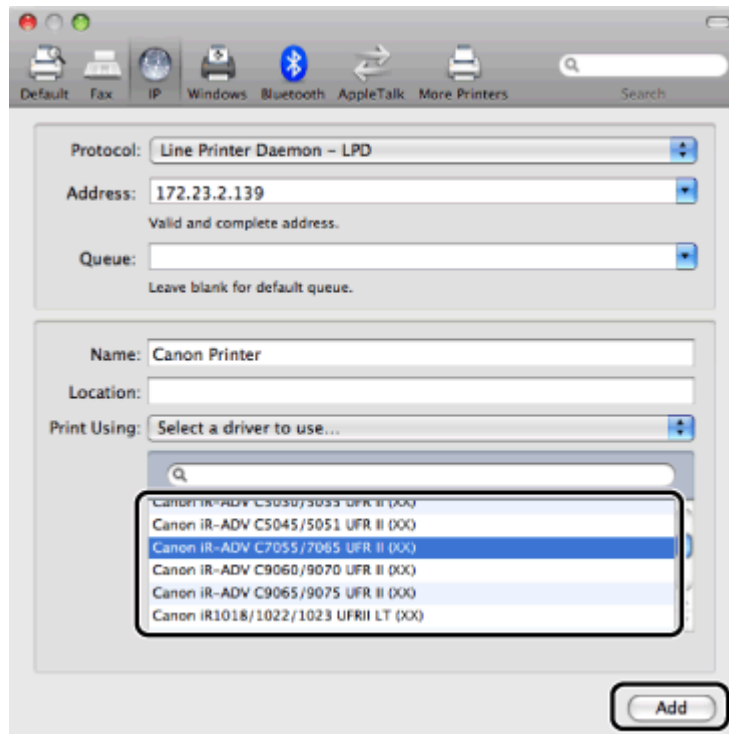
If you are using Mac OS X 10.4.x enter the IP address of the printer you are going to use, then select [Canon] from [Print Using].

If you are using Mac OS X 10.6 or later, enter the IP address of the printer you are going to use, then select [Select Printer Software] from [Print Using].



5. Select the printer driver corresponding to the printer you are going to use from the list.

If you are using Max OS X 10.6 or later, select the printer driver corresponding to the printer model you are going to use in the [Printer Software] dialog box.



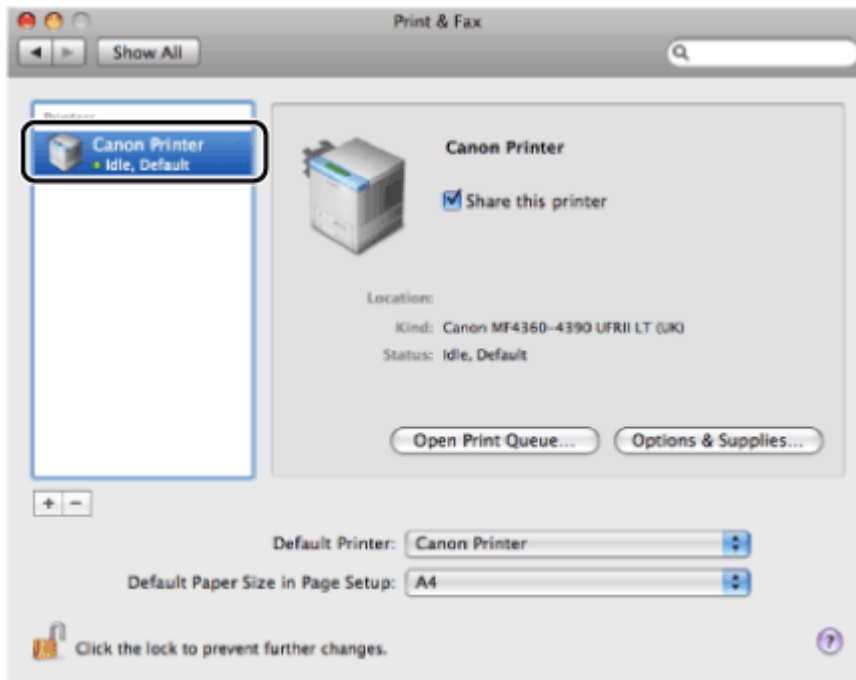
For the imageCLASS MF590dw select [Canon MF5900 Series (US)]

6. Click [Add].

The option settings dialog box is displayed.

Confirm or set the options to be used with the printer, then click [Continue].

7. Confirm that the printer has been added in the [Print & Fax] or [Print & Scan] dialog box, then close the dialog box.



Adding the Fax in the System Preferences

[<< Previous](#)

[Next >>](#)

1. Open [System Preferences] then click [Print & Fax] or [Print & Scan].

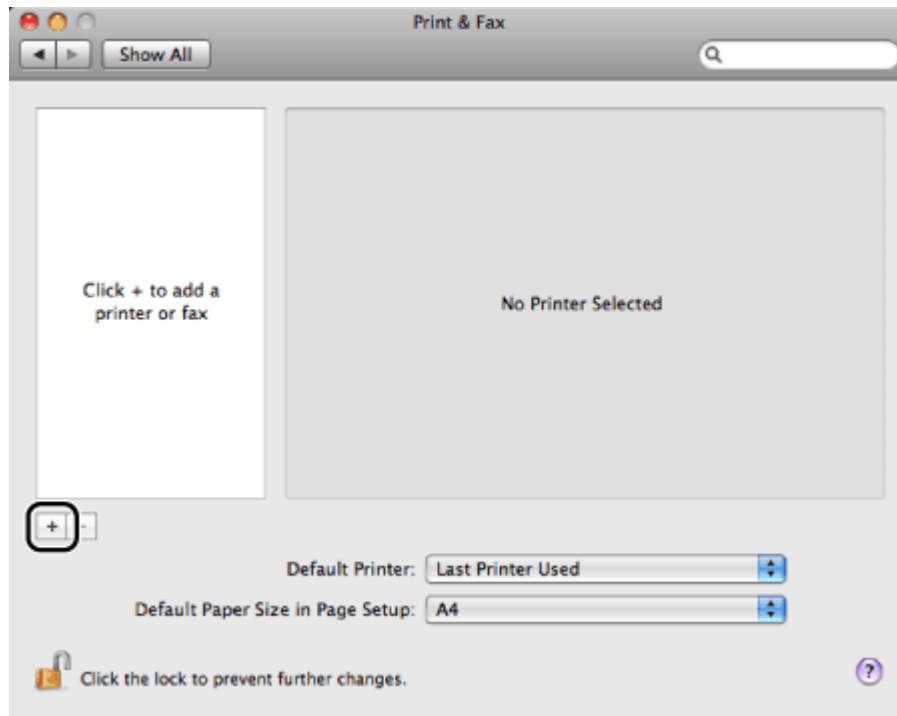


The [Print & Fax] or [Print & Scan] dialog box is displayed.

2. Click the [+] icon.

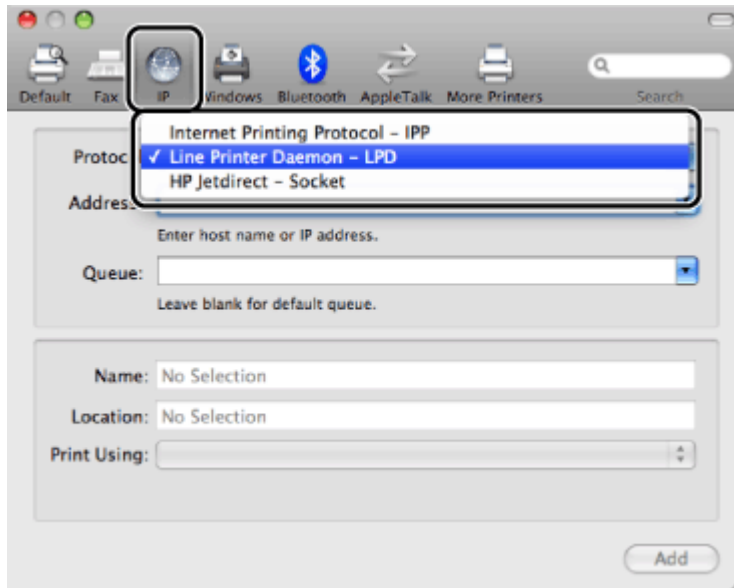
If you are using Mac OS X 10.4.x, click [Print] in the [Print & fax] dialog box to display the [Printing] pane then click the [+] icon.

If you are using OS X Lion, and there are shared printers or Bonjour supported printers on the network, click [+] and select [Add Other Printer or Scanner].



The printer registration dialog box is displayed.

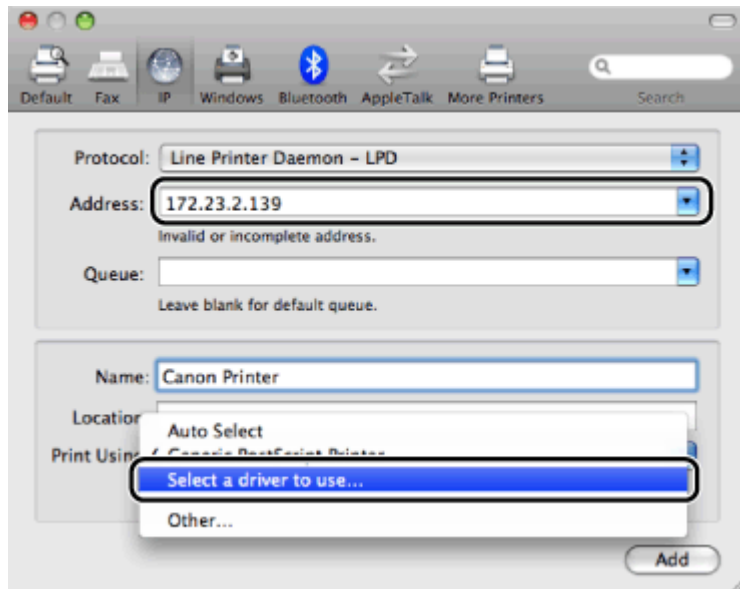
3. Select [IP] or [IP Printer] then select [Line Printer Daemon – LPD] or [HP Jetdirect – Socket] from [Protocol].



Note:
[IPP (Internet Printing Protocol)] is not supported.

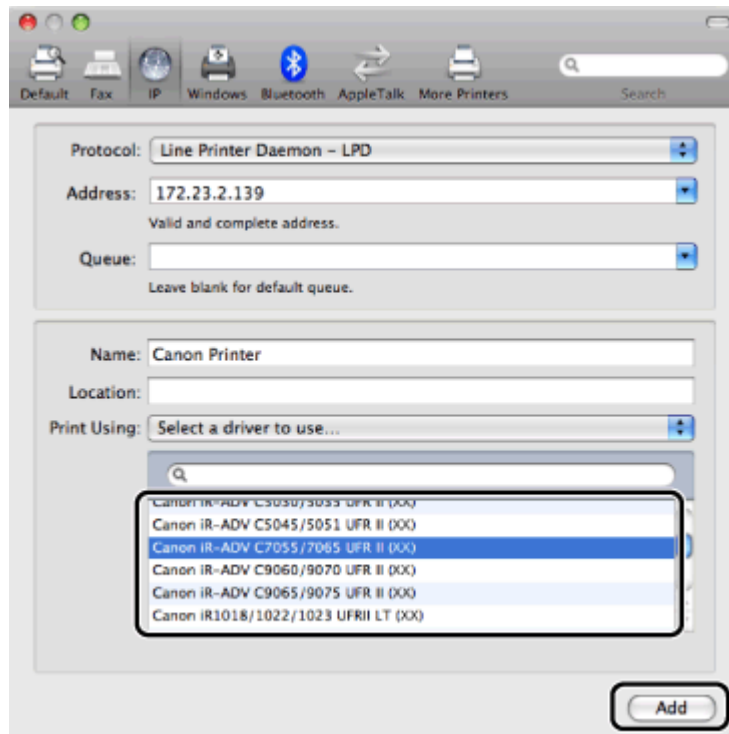
4. Enter the IP address of the fax you are going to use in [Address], then select [Select a driver to use] from [Print Using].

If you are using Mac OS X 10.4.x enter the IP address of the fax you are going to use, then select [Canon] from [Print Using].
If you are using Mac OS X 10.6 or later, enter the IP address of the fax you are going to use, then select [Select Printer Software] from [Print Using].



5. Select the fax driver corresponding to the printer you are going to use from the list.

If you are using Max OS X 10.6 or later, select the fax driver corresponding to the printer model you are going to use in the [Printer Software] dialog box.



For this product select [Canon MF5900 Series FAX(US)]

6. Click [Add].

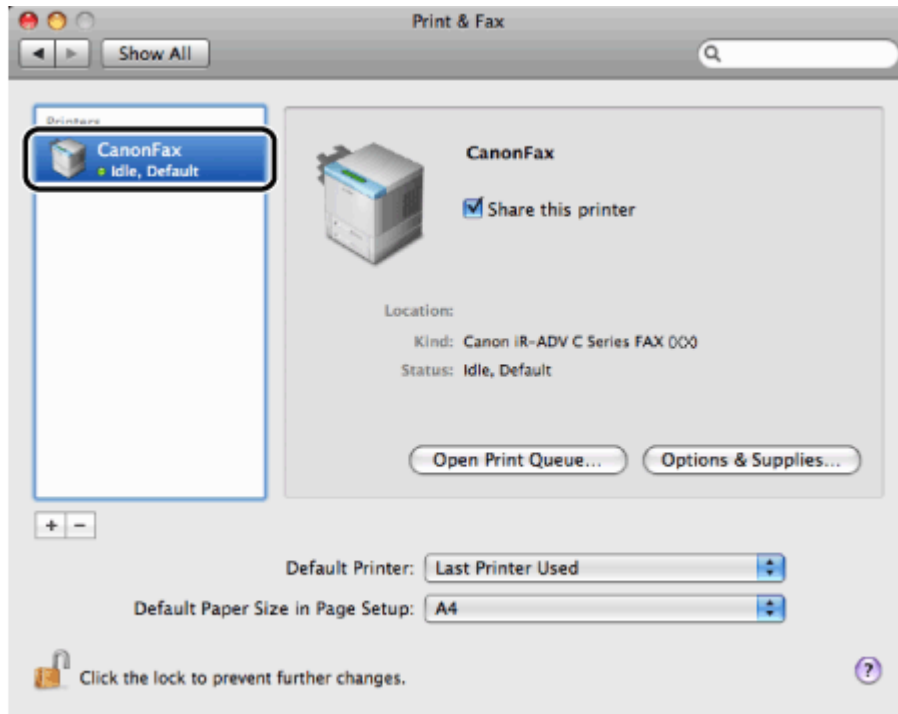
The option settings dialog box is displayed.

Confirm or set the options to be used with the fax, then click [Continue].

7. Select the connection method.



8. Confirm that the fax has been added in the [Print & Fax] or [Print & Scan] dialog box, then close the dialog box.



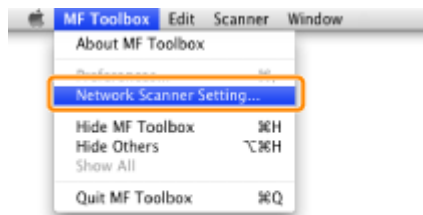
To scan documents via network connection, you need to register the scanner to the MF Toolbox.

1. Double-click the icon of [MF Toolbox] installed in the following folder.

The hard disk you are using >[Applications]>[Canon MF Utilities].

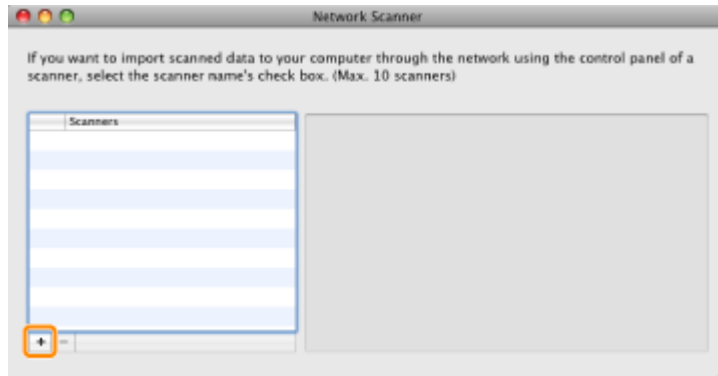


2. Click [Network Scanner Settings] from the [MF Toolbox] menu.



The [Network Scanner] dialog box is displayed.

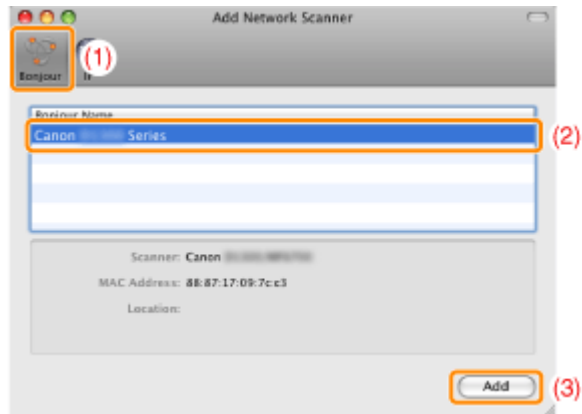
3. Click [+] (or [Add]).



4. Register the scanner.

For Bonjour connection.

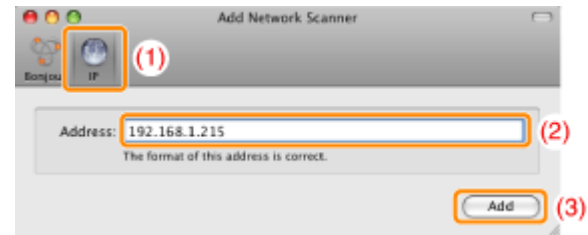
1. Click [Bonjour].
2. Click the scanner name you want to use.
3. Click [Add].



4. Proceed to Step 5.

For TCP/IP connection.

1. Click [IP].
2. Enter the IP address or hostname of the scanner you want to use.
3. Click [Add].



4. Proceed to Step 5.

5. Close the [Network Scanner] dialog box.

Important

Up to ten computers can be connected to the product at a time for scanning via a network.

You cannot scan and send to an eleventh and subsequent computers.

If you want to scan, perform either of the following procedures.

- Turn the other computers OFF
- Clear the check box for the scanner in [Network Scanner Settings]* of other computers.

* When Windows computer is connected, disconnect the computer with (MF Network scan Utility)

Congratulations!

[<< Previous](#)[End](#)

You have successfully added your Canon imageCLASS device to your wireless network.