



Updating the Firmware

What is needed to update the firmware?

Updating the Firmware

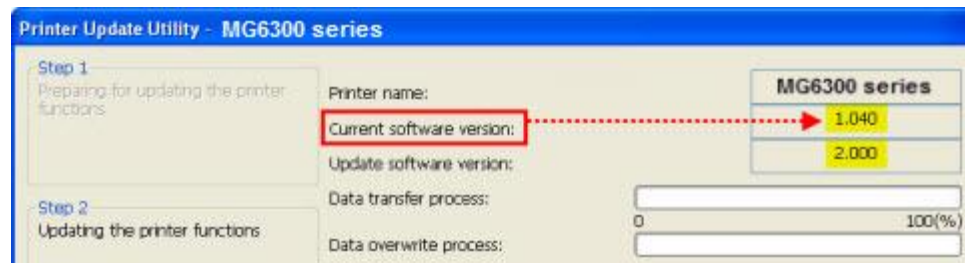
What is needed to update the firmware?

Requirements for Firmware Update

- Computer on which the printer driver is installed.
 - Windows Versions: Windows XP SP3 or later, Windows Vista (32 bit / 64 bit), Windows 7 (32 bit / 64 bit), Windows 8 (32 bit / 64 bit)
 - Mac Versions: Mac OS X 10.5.8, Mac OS X 10.6.8, Mac OS X 10.7 and Mac OS X 10.8
- Printer that you are using
- USB cable
- Printer Update Utility

Check Whether Update is Necessary

The Print from E-mail Firmware Updater includes a firmware version checker. Download and run the updater (instructions on next page). If the current firmware version is 2.000 or later, the firmware update is not necessary. If the current firmware version is earlier than 2.000, run the utility to update the firmware.



Updating the Firmware

Downloading the Printer Update Utility


Downloading the Printer Update Utility to your Computer

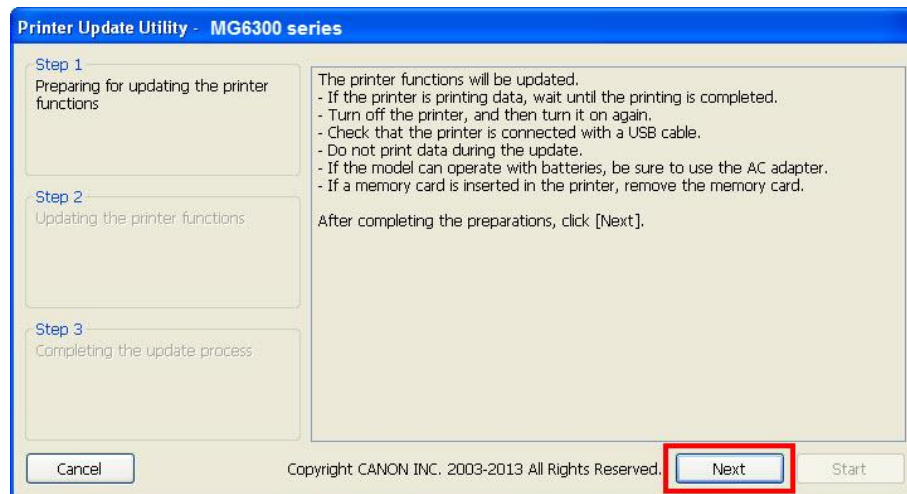
Follow the steps below to download the Printer Update Utility

1. Go to the [MG6320 Drivers & Software page](#) on the website.
2. On the **Drivers & Software** page, select your computer's operating system and OS version from the drop-down menus.
3. Click the arrow beside **Firmware** to expand this section.
4. Click on the description's title.
 - For Windows, the title is **Print from E-mail Firmware Updater (Windows) for MG6300 series Ver.1.0**
 - For Mac OS X, the title is **Print from E-mail Firmware Updater (Macintosh) for MG6300 series Ver.1.0**
5. On the next screen, read the license agreement, click **I Agree - Begin Download** and save the file to your computer's hard drive.
 - **Note:** Do not select the **Run** option
6. Once the file has downloaded Expand the download file.
 - On a Windows computer, double-click the downloaded exe file to decompress it. A folder, fuu_-win-mg5400-1_0-ea7, will be created. Double-click the folder to open it.
 - On a Mac OS X computer, double-click the downloaded dmg file to decompress it. The Printer Update folder will open.

Updating the Firmware Update Procedure

This procedure is used to update the printer's firmware to support Print from E-mail

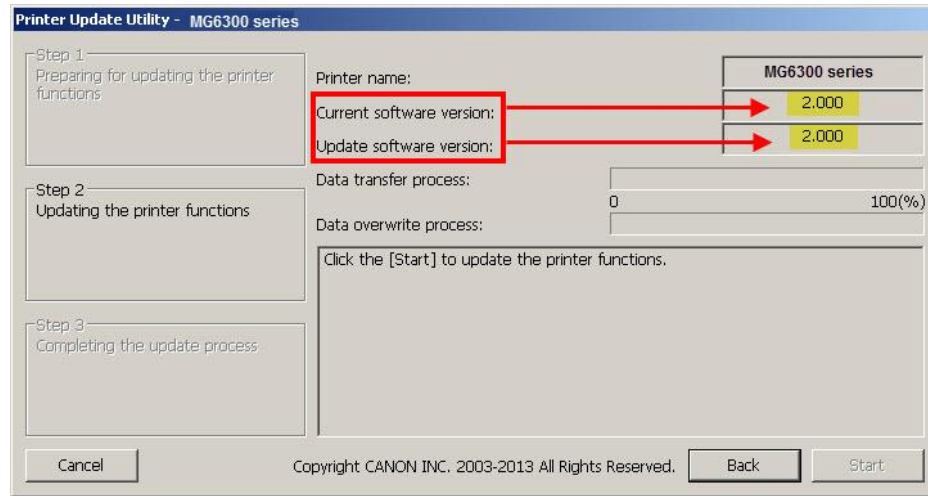
1. Ensure the printer is not printing or scanning.
 2. Power off and back on the printer by pressing the **ON** button.
 3. Connect the computer and printer with a USB cable.
- ▶ **Important:**
- Ensure only one printer is connected to the computer via a USB cable.
4. Double-click the **Printer Update** icon  to start the update.
 5. Check the message content to the right of **Step 1** and then click **Next** when you are ready to start the procedure.



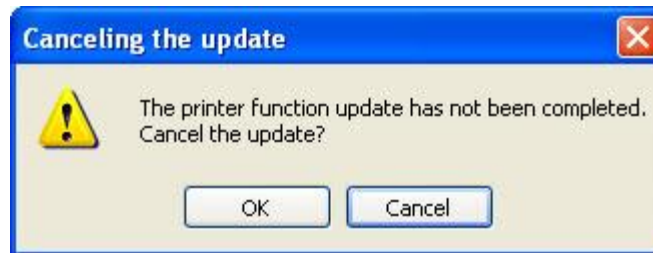
Updating the Firmware

Update Procedure

- At **Step 2**, check the printer's firmware (software) version. If the utility shows the **Current software version** to be 2.000 or later, the **Start** button will not be enabled and the printer's firmware does not need to be updated.

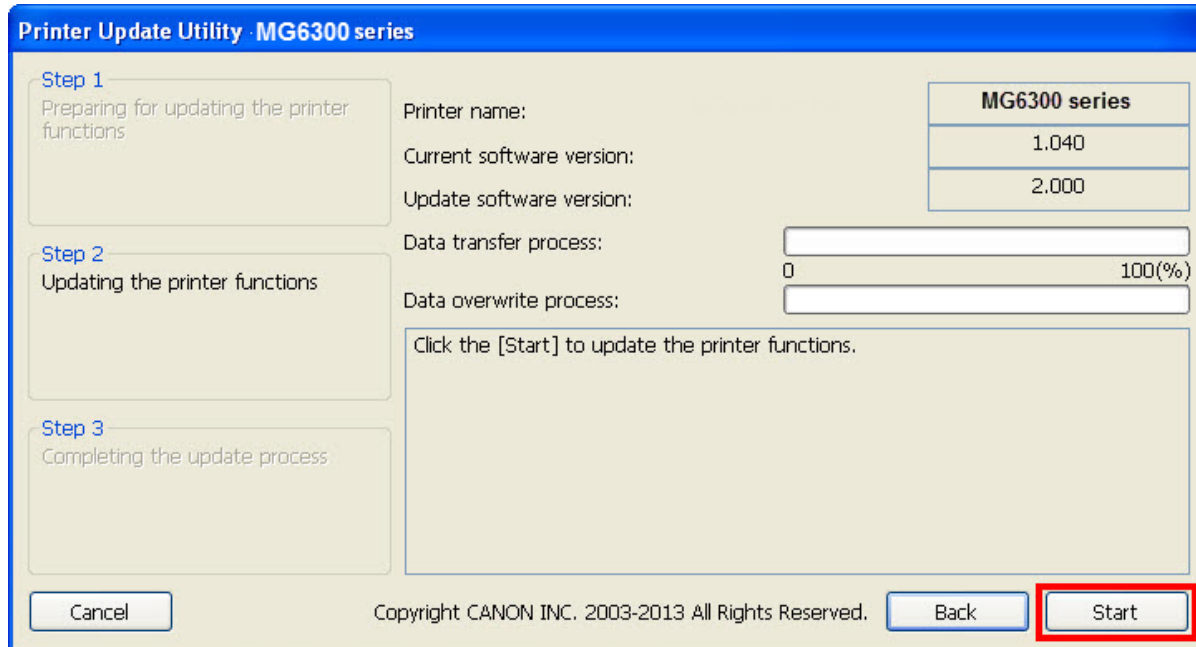


- If the printer's firmware does not need to be updated, click **Cancel** on the lower left corner and then click **OK** to cancel the update.



Updating the Firmware

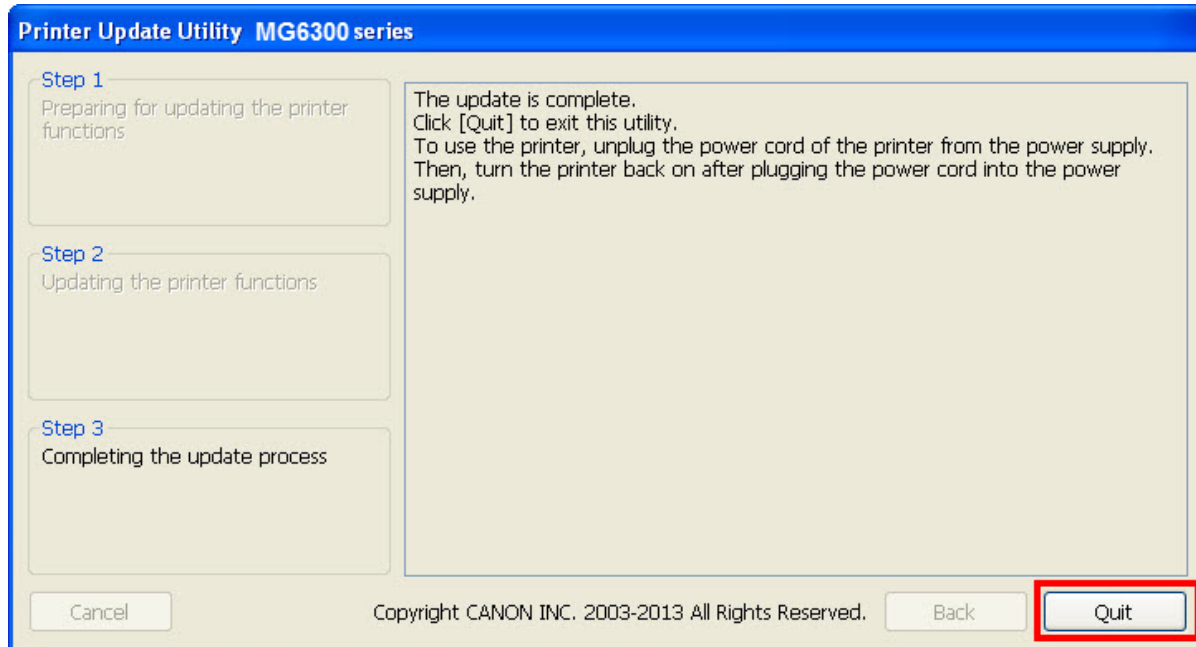
8. If it is determined the update is required, click **Start** on the Step 2 window.



Please wait while the while the printer's functions are updated.

Updating the Firmware

9. Click **Quit** on the Step 3 window. Firmware update is completed.



10. To use the printer, unplug the power cord, reconnect it and turn the printer back on.

Preparing the items required

Preparing the items required

To use **Print from E-mail**, you need to register the printer to **Print from E-mail**.

Prepare the following:

a) Your e-mail address

Your e-mail address will be used for the account information for Print from E-mail.

b) PC, smartphone, or other types of PDA

Using a PC, smartphone, or other types of PDA, you will register the printer to Print from E-mail.

REFERENCE

The PC, smartphone, or other types of PDA must be connected to the Internet (including via the G3 line).
For your easy entry, use of a PC with the keyboard is recommended.

(For the registration procedure, see [Registering the the printer to Print from E-mail.](#))

The printer must be connected to the Internet.