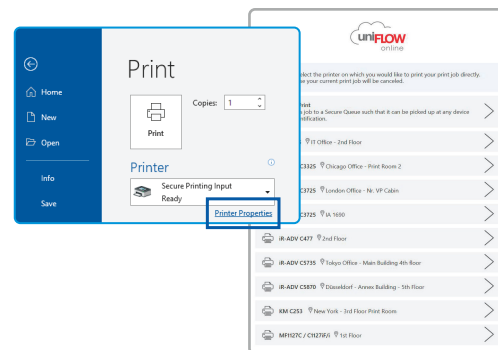


# uniFLOW Online UNIVERSAL OUTPUT QUEUE



uniFLOW Online Universal Output Queue helps to reduce the number of print drivers that organizations must manage within their print environments, by enabling direct printing to compatible devices without the need to install device-specific drivers. This is made possible by enhancing the capabilities of the uniFLOW SmartClient<sup>1</sup> and uniFLOW Universal Driver.



## Benefits



**Boost Efficiency.** Existing customers can enjoy automatic updates of the uniFLOW SmartClient, which require no end user involvement.



**Save Time.** Administrators and end users no longer need to update or maintain printer drivers, helping organizations to realize time savings.



**Provide End-User Flexibility.** Direct Printing and quick job release enable printing via the "Secure Printing" functionality; using a single driver helps contribute to workflow flexibility.



**Easy Integration.** Roll-out of the Universal Output Queue is achieved by the uniFLOW SmartClient<sup>1</sup>. Administrators only need to "enable and save" the Universal Output Queue option in uniFLOW Online, helping to easily add the functionality.



**Intuitive User Workflows.** Upon successful integration of the Universal Output Queue, printing is a simple process. All jobs are sent to the uniFLOW Online print queue "Secure Printing Input" using a single Universal Print driver. Before job submission, finishing options can be set where possible.<sup>2</sup>

## Multi-Vendor Compatibility

uniFLOW Online currently offers embedded support for many devices—and the list of supported manufacturers is growing!

With uniFLOW Online Universal Output Queue, devices can be integrated as "network printers". This helps to enable direct printing using a single driver, and can allow users to direct print from compatible Canon devices and/or those from other manufacturers.



<sup>1</sup> uniFLOW SmartClient is a software with embedded printer driver that has to be installed locally on the computer of each uniFLOW Online user, helping to enable uniFLOW Online to keep track of the user's print jobs; the Universal Output Queue requires uniFLOW SmartClient 2020.1 or later.

<sup>2</sup> Finishing options might not be applied to all devices due to device limitations.

USA.CANON.COM/UNIFLOWONE

**Canon**



Canon offers products that contain certain security features, yet many variables can impact the security of your devices and data. Canon does not warrant that use of the features referenced herein will prevent security issues. Nothing herein should be construed as legal or regulatory advice concerning applicable laws; customers must have their own qualified counsel determine the feasibility of a solution as it relates to regulatory and statutory compliance. Subscription to a third-party cloud service required. Subject to third-party cloud service provider's Terms and Conditions. Canon and imageRUNNER are registered trademarks of Canon Inc. in the United States and may also be registered trademarks or trademarks in other countries. uniFLOW is a registered trademark of NT-ware Systemprogrammierung GmbH. All other referenced product names and marks are trademarks of their respective owners. Specifications and availability subject to change without notice. Not responsible for typographical errors. ©2022 Canon U.S.A., Inc. All rights reserved.

0322-uFPQ-PDF-IH



uniFLOW Online  
Outstanding Cloud Output  
Management Solution