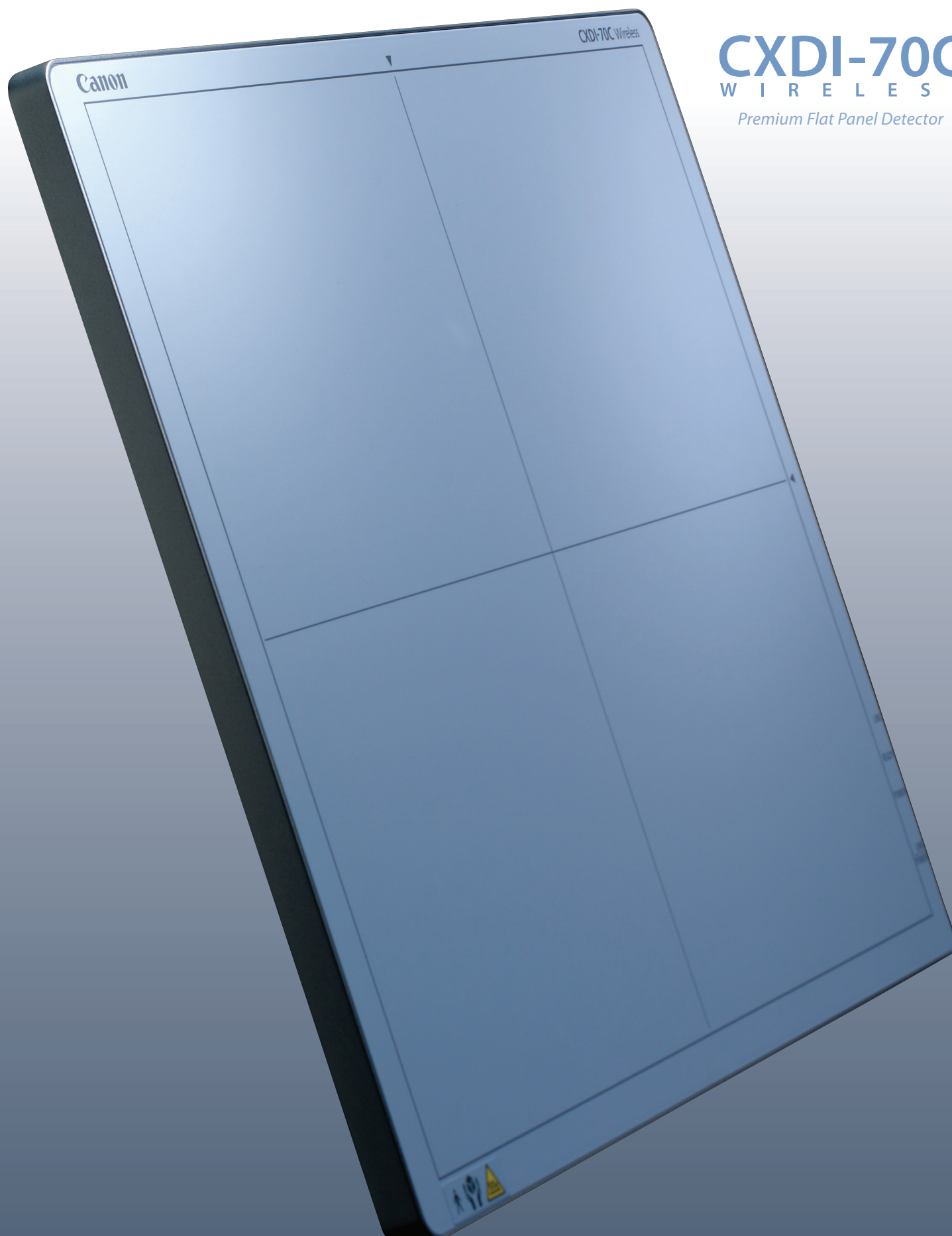


**Canon**



**CXDI-70C**  
W I R E L E S S

*Premium Flat Panel Detector*

***Lower Dose. Higher Resolution.\****

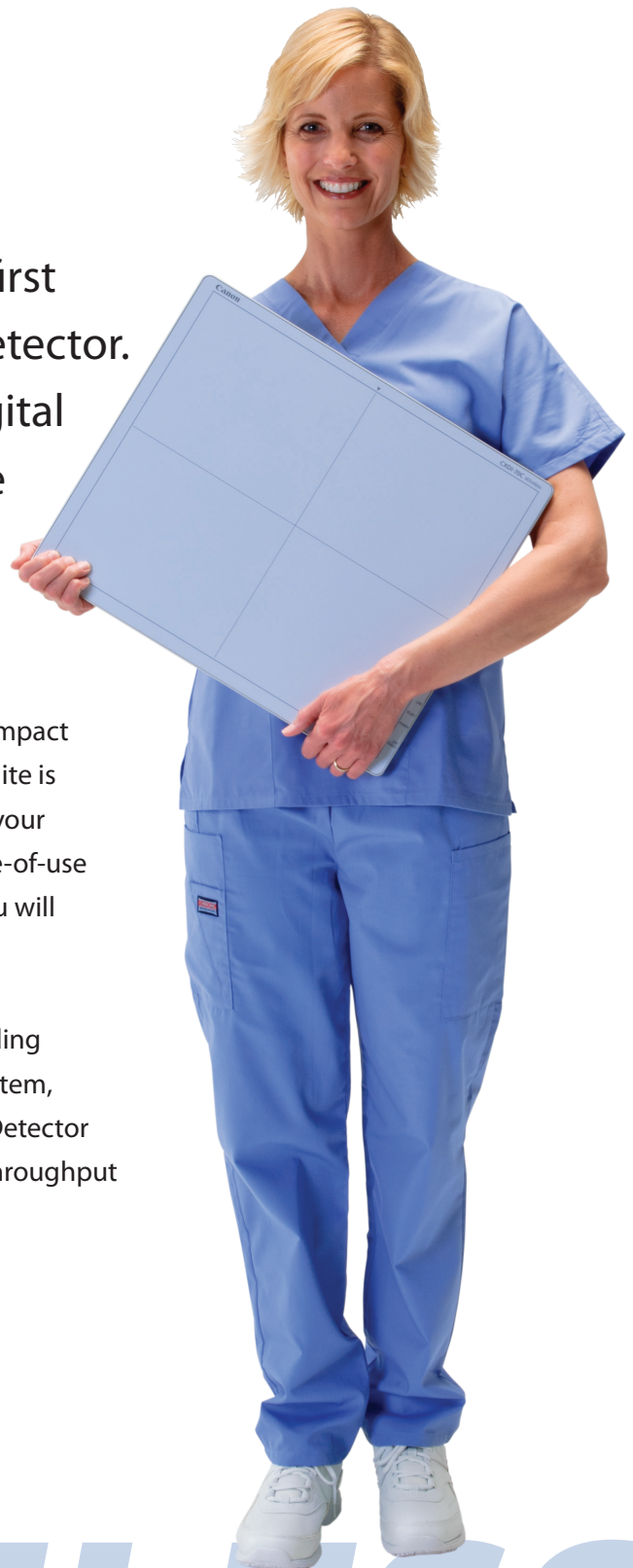
# *Embrace True Freedom*

---

Canon introduced the world's first portable digital radiography detector. We continue to expand our Digital Radiography solutions with the CXDI-70C Wireless Premium Flat Panel Detector.

High performance, low dose technologies, thin/compact design and a powerful, comprehensive software suite is what the CXDI-70C Wireless Detector will bring to your imaging department. Freedom, flexibility and ease-of-use from Canon's first true wireless detector is what you will experience – Every day.

So, whether you are moving from CR to DR, upgrading your existing technology or installing a new DR system, the Canon CXDI-70C Wireless Premium Flat Panel Detector is an ideal choice for excellent image quality and throughput at a lower dose to the patient.



# WIRELESS



## Designed to Fit

Unlike many DR detectors on the market today, the Canon CXDI-70C Wireless Detector is designed to fit into any standard bucky tray, either in a table or a wall stand, eliminating the headache of retrofits. It is ISO 4090 compliant, allowing digitization without the need to modify existing analog imaging equipment. And with an effective imaging area of 14" x 17" (35 cm x 43 cm), the CXDI-70C Wireless Detector is ideal for most procedures.

## Portability Built to Last

Canon's wireless and proprietary imaging technology enables you to go from room-to-room freely, without a sensor cable, taking with you high sensitivity and connectivity.

The CXDI-70C Wireless Detector is built for active use with enhanced battery lock points and automatic reminders to switch out the battery pack prior to losing power. Simply replace the battery and the CXDI-70C Wireless Detector can be operational in seconds.

With all the advanced features, technology "firsts" and support Canon provides, the CXDI-70C Wireless Premium Flat Panel Detector is designed to be a sound investment well into the future.



*Handle unit sold separately.*





# Superb Performance from Canon

The CXDI-70C Wireless Premium Flat Panel Detector uses cutting-edge DR technology designed and built by Canon to put exceptional image capture, lower dose\* efficiency and outstanding DR performance at your fingertips.



## Portable

- **Super Compact and Lightweight**
  - 14" x 17" (35 cm x 43 cm) imaging area
  - 7.5 lbs (3.4 kg) including battery
- **Powerful Wireless Communication Using 802.11n**
  - Seamlessly transfer data from detector to console. And, if signal loss occurs, re-acquire connection quickly
  - Captured image can be retransmitted from detector if necessary
- **Data Transmission Security Protocol** – Wi-Fi Protected Access II (WPA2™) with AES encryption
- **Efficient Infrared (IR) Check-In Unit** – Register by simply pressing a button on the detector. And easily register up to 10 detectors per console
- **Simultaneous Use** – Concurrently use up to 4 detectors, allowing the detector to be used in multiple rooms and/or mobiles
- **Interchangeable Battery Pack** – Easily swap out batteries before or during an exam to minimize interruptions and maximize throughput



## Flexible

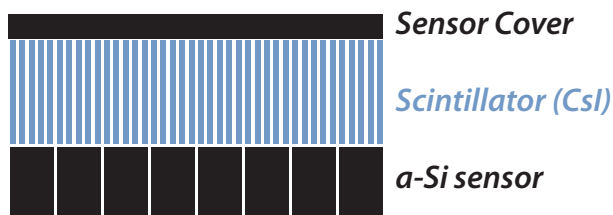
- **Same Size and Thickness as Film Cassettes**
- **Designed to Fit Into any Standard Bucky**
  - Eliminate the need for retrofitting whether using the detector in a table, wall or universal stand
- **Thin and Compact** – 0.6" (15 mm)
- **Handle Unit (Optional)** – Engineered to easily transport and securely hold the detector in place



# HIGH SENSITI



Cutaway diagram of a Canon engineered Flat Panel Detector layer



## Canon Developed Advanced Technology

- **Glass Substrate** – Delivers high resolution images at 125 micron pixel pitch
- **Cesium Iodide (CsI) Scintillator** – Optimizes light channeling thereby producing high quality images at a low X-ray exposure to the patient
- **Advanced LANMIT Detector** – Provides easy acquisition of high-resolution, high-contrast diagnostic images

## Durable/Dependable

- **2-Lock Battery System** – Minimizes possibility of batteries falling out during use and losing valuable data
- **Long Battery Life** – Up to 6.5 hours and for extended use when necessary
- **Battery Replacement Reminders** – 2 automatic reminders take the guessing out of when to replace your battery
- **Minimal Battery Replacement Downtime** – Easily replace the battery and be running again in seconds
- **Large Image Capture Capabilities** – Capture up to 140 images over the life of each full battery charge
- **Up to 330 lbs or 150 kg of Overall Standing Pressure** – Ideal for capturing images from a standing position



## Powerful CXDI Control Software NE

Engineered exclusively for Canon DR detectors, this comprehensive software suite:

- **Reduces Operation Steps**
- **Supports Multiple Study Acquisition**
- **Can Easily be Tailored to Individual Clinician Preferences**
- **Provides Quick Image Confirmation, Timely Network Distribution and Fast Preview Imaging**
- **Complies with HIPAA standards and is IHE compliant**

# TIVITY

## High Sensitivity for Even the Smallest Patients

Canon proprietary technology allows for easy acquisition of high resolution, high contrast images with minimum X-ray exposure – making the CXDI-70C Wireless Detector ideal for neonatal and pediatrics patients.



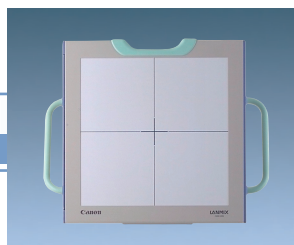
## Specifications

Purpose	General Radiography
Method	Cassette size detector; scintillator & amorphous silicon
Sensor	LANMIT (Large Area New-MIS sensor and TFT)
Scintillator	CsI (CsI: TI)
Pixel Pitch	125 microns
Pixels	2800 x 3408 pixels
Image Size	Automatic sizing up of 14" x 17" (35 cm x 43 cm)
A/D	14-bit
Grayscale	4,096 grayscale (12-bit)
Wireless Standard	IEEE 802.11n
Preview Image Access Time	Approx. 3–5 seconds after X-ray exposure
High Resolution Image Display Time	Approx. 5 seconds after X-ray exposure
Cycle Time	Approx. 15 seconds after X-ray exposure
DICOM	DICOM 3.0 compatible, Print Management Service Class (SCU) Storage Service Class (SCU), and others
Battery Performance	Up to 140 images (@100 sec. cycle, 1 sec sleep)
Recharging Time	Less than 3 hours
Operating Environment	Sensor Unit: 41 - 95°F (5 - 35°C), 30 - 80% RH (non-condensing)
Dimensions	15" x 18" x 0.6" (384 mm x 460 mm x 15 mm)
Weight (w/ battery)	7.5 lbs (3.4 kg)



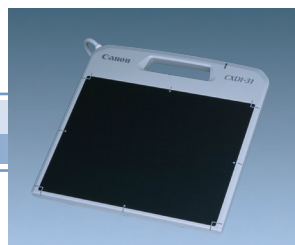
## Driving DR Detector Technology from the Beginning

1998



*CXDI-11*  
Canon's First DR Detector

2001



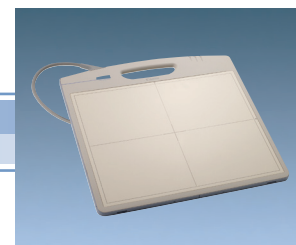
*CXDI-31*  
World's First Portable  
DR Detector

2003



*CXDI-50G*  
World's First Full Size  
Portable DR Detector

2009



*CXDI-55G/CXDI-55C*  
Lightest Full Size  
Portable DR Detector

## Experience the Outstanding Support and Training Canon Provides



With over 70 years of medical history, the largest share of the US DR market and thousands of systems installed worldwide, Canon has become an innovator in the Digital Radiography marketplace. And, Canon DR Systems have earned a top ranking in system reliability and applications training by MD Buyline\*\*.

Our CXDI-70C Wireless support and on-site applications training/implementation can get you up and running fast – quickly increasing productivity. And with an optional extended service agreement, your investment can be protected for years to come.

# RELIABLE

Call your Canon Medical Systems representative today to find out how the CXDI-70C Wireless Premium Flat Panel Detector and a complete line of Canon DR solutions can enhance your imaging capabilities.

DRB-014 Rev. A  
0611/2000

\* Compared to all other portable digital radiography detectors as of June 9, 2011.

\*\* MD Buyline Inc. 2011, Quarterly User Satisfaction Report™ 1st Quarter 2011.

CANON and CXDI are registered trademarks of Canon Inc. in the United States and may also be registered trademarks or trademarks of other countries. WPA2 is a trademark of the Wi-Fi Alliance. DICOM is a registered trademark of the National Electrical Manufacturer's Association for its standards publications relating to digital communications of medical information. All other referenced marks are trademarks of their respective owners and are hereby acknowledged. Specifications are subject to change without notice.

© 2011 Canon U.S.A., Inc



CANON MEDICAL SYSTEMS

A Division of Canon U.S.A., Inc.

15955 Alton Parkway

Irvine, CA 92618-3616, U.S.A

Telephone: (800)970-7227, (949)753-4160

Fax: (949)753-4164

Email: [drsales@cusa.canon.com](mailto:drsales@cusa.canon.com)

Website: [www.usa.canon.com/cxdi-70cwireless](http://www.usa.canon.com/cxdi-70cwireless)