

500iF / 400iF

Workgroup Solutions

multifunction printer

compact design

black-and-white copy/print

color scanning



Simply advanced.



imageRUNNER
ADVANCE

500iF / 400iF

Designed for

**Busy workgroups that
expect advanced workflow
in a compact space**

Standard Features

Copy/Print/Send/Fax

Black-and-White Copy/Print

Color Scan and Send

Print up to 52 ppm (Letter)

Up to 1200 x 1200 dpi

Up to 8-1/2" x 14"

2,300-sheet maximum capacity

In-line finishing option

Scan up to 52 ipm

Scan directly to Microsoft® PowerPoint®
and Searchable PDF formats

Hard Disk Drive Lock and Erase, IPsec



Simply advanced.

As Canon's most advanced compact MFPs, the imageRUNNER ADVANCE 500iF/400iF models deliver easy, efficient workflows and connectivity to mobile devices and cloud-based tools. Smooth fleet integration allows transition from single-function printers to advanced MDS solutions without sacrificing space. Designed to help any business reach higher productivity, these models are simply advanced.



People-Centric

An exceptionally intuitive, simple-to-use interface puts access to all functions right at your fingertips, whether at the device or at your desktop.



Collaborative

Work better together—your teams will have the ability to access and leverage the capabilities of other connected imageRUNNER ADVANCE devices on your network.



Mobile

Even on the go, you're in control. Print from a laptop, tablet, or smartphone to an imageRUNNER ADVANCE system.



Cloud-Enabled

A touch of a button on the user interface lets you access, scan to, or print directly from certain cloud applications.



Security

Multilayered solutions help safeguard confidential information and, with certain options, support security compliance.



Connected

Advanced technology and expansive enterprise applications work seamlessly with your device to deliver exceptional results.



People-centric. Compact size.

Designed to help any user complete tasks quickly and easily, the imageRUNNER ADVANCE 500iF/400iF models' advanced capabilities and small size help increase productivity while also saving space.

A smart, intuitive interface

The imageRUNNER ADVANCE 500iF/400iF models are designed with you in mind. With an impressive range of customizable, simple-to-use, streamlined features, the imageRUNNER ADVANCE platform lets users work smarter and faster. The 7" full-color, tiltable, high-resolution TFT screen helps provide exceptional clarity and usability.



Two menus

Press the Main Menu key for instant access to business-ready functions. Create and access routine tasks and job flows using the Quick Menu.



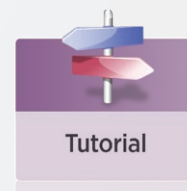
Custom options

Organize and restrict the on-screen buttons to fit the way you work by determining their number, size, and layout. Even display your own graphics as a screen background.



Web-ready

View Web pages directly from the device control panel. Just enter a URL to browse pages. Easily outputs online PDFs.



Tutorial

Handy tutorials

Quickly access simple step-by-step instructions right on the user interface.



Easy Toner Access



One-button Paper Access



Card Reader



Staple Finisher

Designed for ease

Even with its compact size, the imageRUNNER ADVANCE 500iF/400iF models are big on ease-of-use features, including a tiltable screen, quick-to-replace supplies, paper drawers that spring open at the touch of a button, and an optional USB keyboard and Card Reader.

Designed to fit

This highly compact device readily fits into spaces where many similarly featured models don't. And the RAPID fusing technology and available semi-internal staple finisher give you professional-quality output in a minimal footprint.



Engineered for adaptability

These intelligent systems are Canon's most advanced letter-/legal-sized multifunction printers ever, supporting many of the same workflows as Canon's larger ledger-sized MFPs. With the ability to smoothly integrate hardware and software solutions, the imageRUNNER ADVANCE 500iF/400iF models let you personalize applications to meet your goals of today—and tomorrow. And it's highly flexible, so you can easily add to, or update, your system by quickly deploying settings and applications across your enterprise.



Walk-up convenience

Perform a host of powerful tasks right on the device's large, tiltable color screen, without having to go back to your desk. View and print PDF files. Easily scan to, or print from, a USB thumb drive. Access and store documents on other imageRUNNER ADVANCE systems—and more.



A familiar experience

No matter which imageRUNNER ADVANCE system you use, you'll enjoy a consistent, simple-to-use experience. And since all models use the same user interface and print driver, there's more productivity, less training, and less burden on IT.



Outstanding connectivity. Easy integration.

Small but powerful, the imageRUNNER ADVANCE 500iF/400iF models are highly effective digital communications hubs. Integrate with enterprise applications, connect to the cloud, link to other devices in your fleet, and gain the freedom to work efficiently anytime, anywhere.



On the go

Today's effective business people need the ability to maintain their productivity 24/7, at home or on the road, via desktop or mobile devices. Regardless of the size of your business, Canon gives you the advanced solutions that help you optimize your efficiency wherever you are.



Mobile devices

Print and scan on the go from your laptop, tablet, or smartphone in a flash with any of Canon's mobile print solutions, including Apple AirPrint™. Just log-in at an imageRUNNER ADVANCE device to retrieve your job.



Cloud-ready

Gain quick access to certain cloud-based applications right from the imageRUNNER ADVANCE. Retrieve or send documents directly via the cloud, and access new cloud services as they emerge.



Integrated with your desktop

Enjoy even greater control and convenience right from your PC. Use the new imageRUNNER ADVANCE Quick Printing Tool to print, fax, preview, and convert files to PDFs, as well as monitor the status of your system—all without even opening an application. And imageRUNNER ADVANCE Desktop lets you manage and prepare documents, combine multiple formats, preview files, and select the finishing features.

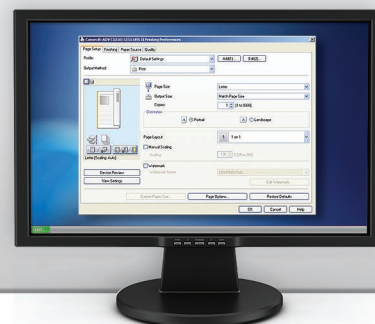
Extensive print solutions

Complete print support

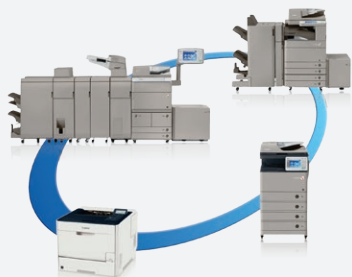
These models support Canon's proprietary high-speed UFR II print technology plus PCL 5e/6 and Adobe® PostScript® 3™. All are standard, built right in to Canon's most advanced letter-/legal-sized MFP systems. Linux and UNIX users are covered, too.

Control

Canon's Driver Configuration Tool allows you to set specific driver defaults and custom profiles. You can control costs and enhance security by implementing features such as forcing duplex and/or secured printing.



Easy collaboration



Inter-device connectivity

The imageRUNNER ADVANCE 500iF/400iF models deliver true fleet integration, easily connecting with other Canon models on your network. Leverage features including Advanced Box folders on other Canon imageRUNNER ADVANCE devices, remote address books, remote storage capabilities, and more.



Advanced Anywhere Print

This serverless solution lets you print to a connected imageRUNNER ADVANCE system that has Advanced Box functionality. Once you conveniently and securely log-in at any device on your network, you can view and retrieve your print job.



Fax documents

These models have fax capability as standard and can support up to two lines. The Job Forwarding feature automatically routes incoming faxes to other systems, users, e-mail servers, or destinations for total integration. Plus, you can automatically redirect incoming faxes to certain Canon LBP printers.

Scan, store, distribute

Canon makes it simple to save, store, and access scanned documents from multiple locations, including external memory media or another networked location. And you can easily distribute scanned documents to multiple destinations—including e-mail addresses, faxes, and network folders—all in a single step. Scan documents directly into your choice of multiple formats, including Microsoft PowerPoint or a Searchable PDF file, as well as High Compression PDF/XPS, PDF/A, and Encrypted PDF.



Integrate your imaging with enterprise applications

A new middleware technology, based on Service Oriented Architecture (SOA), links enterprise applications, such as Oracle® and SAP®, with Customer Relationship Management (CRM) systems like Salesforce.com®, ECM system, and many others. You can also connect your document-intensive processes with these applications. The streamlined document and data flow automates complex business processes and offers easy access to information, saving both time and money.

Advanced business process optimization

Leveraging the capabilities of devices like the imageRUNNER ADVANCE 500iF/400iF models, Canon can deliver tools to help optimize the way any business performs core tasks. These include printing, copying, scanning, document storage, document management, information sharing and more, even bringing the power of cloud-based tools to many common workflows.





Robust security. Centralized management.

In today's networked world, you need greater control over your resources and data. The imageRUNNER ADVANCE 500iF/400iF models deliver just that with the ability to configure a system, safeguard information, and track resources—right at your fingertips.



Powerful command

Canon's device management tools help keep you in charge at every step, right from your desktop or through the cloud. Easily install and replace devices, migrate settings and data to new ones, and distribute applications and settings across your network. Monitor a single device with the Remote User Interface or an entire fleet with the Canon imageWARE Enterprise Management Console. You can even receive alerts when supplies or service are needed.



Safeguard data

From installation to retirement, these models offer multilayered solutions to safeguard information and help support security compliance. HDD Erase, a standard feature, removes latent images after each task. A security chip with tamper-resistant hardware helps protect passwords and encryption keys. IPsec provides security for data as it traverses the network. Optional HDD Data Encryption helps protect information even after hard drive removal.



Maximize resources

These models offer advanced tools to help you track, manage, and influence user behavior. Solutions, such as uniFLOW, analyze output, encourage double-sided printing, and allocate costs by department, project, or client. Route jobs to the most cost-effective device and get alerts when supplies are low.



Secure authentication

With the need to keep data secure, busy workgroups will appreciate the imageRUNNER ADVANCE Series' server-less print environment. Users can print from anywhere within the network to any connected device via log-in authentication, helping to prevent printed documents from being left unattended.

Security Features

Document Security

- Adobe® LiveCycle® Rights Management ES2.5 Integration
- Encrypted Secured Print
- Watermark/Secure Watermark
- Copy Set Numbering
- Encrypted PDF
- Digital Signature PDF
- Fax Forwarding
- Fax Destination Confirmation

Mail Server Security

- POP Authentication before SMTP
- SMTP Authentication

Network Security

- IP/MAC Address Filtering—Port Filtering
- SSL Encryption
- Network Application On/Off
- USB Port On/Off
- Destination Restriction
- IPsec
- IEEE802.1x (Wire/Wireless)

Device Security

- IEEE2600.1 Certification*

Data Security

- HDD Lock
- Trusted Platform Module
- HDD Data Erase and Initialize
- HDD Encryption
- Job Log Conceal

Logging/Auditing Security

- imageWARE Secure Audit Manager Authentication
- Department ID/Control Card Systems
- Device Level Log-in (SSO-H)
- Access Management System (AMS)
- Function Level Log-in via AMS
- Authorized Send
- Smart Card Authentication

Note: Some features may be optional.

*Check with your Canon Authorized Dealer for availability.



Dependable operation. Outstanding results.

Produce professional-quality documents quickly and easily. The imageRUNNER ADVANCE 500iF/400iF models provide eye-catching quality in a compact footprint—all with the reliable performance you expect from Canon.



Outstanding results

The imageRUNNER ADVANCE 500iF/400iF models give you the ability to print high-quality documents in-house regardless of the size of your operation. Proposals, reports, newsletters, and contracts are consistently striking in crisp black and white and 1200 dpi, thanks to Canon's state-of-the-art imaging technology and toner technologies. With the compact finisher option, everyone in your office can make a great impression with a minimum amount of floor space.



Lots of uptime

Canon incorporates its signature reliability into every imageRUNNER ADVANCE Series model. Status notifications help keep you ahead of the game, and toner bottles are easy to access. The waste toner bottle is readily replaceable by the user, further minimizing downtime. If the correct paper for a job is unavailable, the system begins the next job without delay. And with access to the latest technology and simple, clear upgrades, you can power through your tasks, giving you more time to devote to other business areas.



Powerful operation

Accomplish multiple tasks concurrently with the speed your work demands. These models have two dedicated processors that work together to accomplish multiple tasks simultaneously. And Quick Startup mode minimizes start-up time, so devices start up promptly to help keep you working with outstanding efficiency.

Targeted, integrated solutions

With productivity being key, the imageRUNNER ADVANCE 500iF/400iF models offer the ability to personalize the way your company gathers, organizes, and disseminates information. Canon's innovative MEAP® platform lets you run custom solutions to meet specific workflow needs. And new levels of connector and link support enhance communication with existing systems as well as those you may acquire in the future.





Strong commitment. Eco-conscious solutions.

The imageRUNNER ADVANCE 500iF/400iF models incorporate innovative, eco-conscious solutions that help keep your business operating efficiently while also helping to reduce your environmental footprint.



A responsible way to work

Canon knows that the world and the workplace need a more responsible workflow, and the EPEAT®-rated imageRUNNER ADVANCE 500iF/400iF models deliver just that. Now you can seamlessly share and distribute digital documents and preview files to make changes prior to printing, reducing the use of paper and toner. Print drivers are defaulted to duplex documents, encouraging two-sided printing to help reduce waste. And with secured printing, documents are sent to a device but not printed until a password is entered, further reducing paper waste.



Eco-conscious design

Canon is making a difference through creative ecological thinking. These models employ certain components fabricated with 100% recycled plastic from retired products. Canon's innovative environmentally focused technologies also include bio-based plastic, a plant-derived compound that replaces certain petroleum-based plastic parts.

A clear strategy

Greater energy efficiency

From the inside out, the imageRUNNER ADVANCE 500iF/400iF models are designed for high-energy efficiency and stellar performance. The combination of Canon's fusing technologies and QF toner helps lower overall energy consumption by minimizing power requirements and reducing energy use during warm-up and standby. With advanced technologies present in each model, the Series also meets ENERGY STAR® standards.



Minimize environmental impact

All Canon suppliers are required to meet Canon's stringent Green Procurement policy and environmental terms. This helps the company exceed the toughest global standards set by the EU RoHS Directive, which restrict the use of certain hazardous substances. In fact, Canon was the first in the industry to meet the RoHS standards and continues this commitment to the environment.



Reduction of CO₂ emissions

Through its Life Cycle Assessment (LCA) System, Canon has lowered CO₂ emissions by focusing on each stage of the product life cycle, including manufacturing, energy use, and logistics. These products are designed with less packaging to be small and light with high performance. They're intended to help make transportation more efficient.



More than managed print.



Canon Managed Document Services



Real Managed Document Services

Powerful MDS Enabler

MDS (Managed Document Services)—expert, ongoing optimization of your total document environment—can boost productivity and help deliver big savings. These models are designed from the start to tap into powerful MDS tools and services that track usage, optimize printing behavior, identify excessive printing, efficiently manage information and process, and more.

Cost-efficient. Feature-packed

Never before has Canon packed so many capabilities into a color device this small. Now you can benefit from powerful imageRUNNER ADVANCE capabilities without sacrificing space. Plus, you can cost-effectively consolidate fleets of inefficient, stand-alone printers into a single advanced system, helping to instantly lower overhead costs.

Leverage your fleet

Canon delivers the industry's most comprehensive and operationally consistent range of smart devices, from letter-sized black and white to color light production. Users like the familiar operation while owners like the high uptime and low TCO. And IT pros like the fast deployment, ready connectivity, and ease of upgrades for the common platform.

Software solutions supporting MDS

Canon's available software solutions and professional services address every area of MDS and help take your business to the next level.

uniFLOW
Therefore™
Advanced Anywhere Print
Universal Login Manager
Authorized Send
Workflow Composer

MDS Cloud
Mobile Printing/Scanning
Enterprise Management Console
with Plug-ins
Middleware Solutions
Third-Party Connectors

Finishing Option

A Staple Finisher-R1

- Single-Tray, 500-sheet capacity
- Corner stapling up to 50 sheets

Paper Feeding Options



B Cassette Module-AA1

- 550-sheet capacity
- 17 lb. Bond to 28 lb. Bond
- Supports up to Legal (8-1/2" x 14")



Envelope Cassette-E1

- 50-envelope capacity
- Supports COM10, Monarch, DL, ISO-C5



Cabinet Options



C Cabinet Type-H (Small)



Cabinet Type-L (Large)

Printer Options*

Direct Print Kit (For PDF/XPS)-H1

PCL International Font Set-B1

Security Options

Universal Send Security Feature Set-D1

Universal Send Digital User Signature Kit-C1

Encrypted Secured Print

Secure Watermark-B1

HDD Data Encryption Kit-C6

IR-ADV Security Kit-H1 For IEEE2600.1 Common Criteria Certification**

HDD Erase Scheduler

IC Card Reader Box-A1

Accessibility Options

Remote Operators Software-B1

Braille Label Kit-F1

ADF Access Handle-A1

* UFR II and PCL 5e/6 and Adobe PostScript 3 are standard.

** Check with your dealer for availability.

Note: For additional options and specifications, please refer to the back page.

Main Unit

Operation Panel: 7" WVGA Full-Color, TFT Screen

Memory

Standard: 1.5 GB RAM
Maximum: 1.5 GB RAM

Hard Disk Drive

Standard: 80 GB
Maximum: 80 GB

Network Interface Connection

Standard: Ethernet 10 Base-T/100 Base-TX/1000 Base-T

Other Interface

Standard: USB 2.0 x3 (Host), USB 2.0 (Device)
Optional: Wireless LAN (IEEE802.1x via third-party adapter)

Copy/Print Speed (BW, Letter)

500iF: Up to 52/52 ppm
400iF: Up to 42/42 ppm

First-Copy-Out Time (Letter)

5 Seconds or Less

Paper Sources (20 lb. Bond)

Standard: 550-sheet Paper Cassette
100-sheet Stack Bypass

Maximum: 2,300 Sheets

Output Paper Capacity (20 lb. Bond)

Standard: 250 Sheets
Maximum: 500 Sheets (with Staple Finisher-R1)

Output Paper Sizes

Cassette 1 (Standard)/2/3/4: Legal, Letter, Statement, Executive, Custom size [5-1/2" x 8-1/4" to 8-1/2" x 14" (139.7 mm x 210 mm to 216 mm x 355.6 mm)], and Envelopes (COM10, Monarch, DL, ISO-C5)*
Bypass: Legal, Letter, Statement, Executive, Custom size [3-7/8" x 5-1/2" to 8-1/2" x 14" (99 mm x 139.7 mm to 216 mm x 355.6 mm)], and Envelopes (COM10, Monarch, DL, ISO-C5)
Other Options: Envelope Feeder Attachment (COM10, Monarch, DL, ISO-C5)*

Acceptable Paper Weights

Cassette 1 (Standard)/2/3/4: 17 lb. Bond to 28 lb. Bond (64 to 105 g/m²)
Bypass: 17 lb. Bond to 34 lb. Bond (64 to 128 g/m²)

Warm-up Time

From Power On: 34 Seconds or Less
From Sleep: 10 Seconds or Less
Quick Startup Mode: Within 7 Seconds or Less**

Power Requirements/Plug

120 V AC, 60 Hz, 10.0 A, NEMA 5-15

Dimensions (H x W x D)

24-7/8" x 22-1/8" x 22-3/8" (633 mm x 560 mm x 567 mm)

Installation Space (W x D)

Without Staple Finisher-R1: 34-3/4" x 40-7/8" (881 mm x 567 mm)
With Staple Finisher-R1: 50-1/4" x 40-7/8" (1276 mm x 567 mm)

Weight

Approximately 107 lb. (48.7 kg)***

Toner (Estimated Yield @ 5% Coverage)

15,200 Images

Image Reader Unit

Scan Resolution

Up to 600 x 600 dpi

Maximum Original Size

Legal (8-1/2" x 14")

Document Feeder

Scan Method

Duplexing Automatic Document Feeder

Acceptable Originals

Paper Size: Legal, Letter, Statement

Scan Speed (BW/Color; Letter)

Simplex: 52 ipm (600 dpi)/52 ipm (300 dpi)
Duplex: 33 ipm (600 dpi)/33 ipm (300 dpi)

Paper Capacity (20 lb. Bond)

100 Sheets

Print Specifications

Engine Resolution: 1200 x 1200 dpi

PDL Support

Standard: UFR II, PCL 5e/6, Adobe® PostScript® 3™

Print Driver Supported OS

UFR II, PCL 5e/6, Adobe PS 3:
Windows® (XP/Vista™/7/8), Windows Server (2003/2008/2008 R2/SBS 2011/2012), Windows Terminal Servers, Microsoft Clustering Server, Citrix (Presentation Server, XenApp, XenDesktop), Macintosh® (OS X 10.5.8 or later, UFR II and PS3 only), VMware, SAP (PCL and PS3 only)

Direct Print Support

Standard: TIFF, JPEG, PDF, EPS[▲]
Optional: XPS^{▲▲}

Universal Send Specifications

Sending Method

E-mail, I-Fax, File Server (FTP, SMB, WebDAV), Super G3 Fax

Communication Protocol

File: FTP (TCP/IP), SMB (TCP/IP), WebDAV
E-mail/I-Fax: SMTP, POP3, I-Fax (Simple, Full)

File Format

Standard: TIFF, JPEG, PDF, PDF (Compact), PDF (Apply Policy), PDF (Optimize for Web), PDF/XPS (OCR), PDF/A-1b, XPS, XPS (Compact), OOXML (OCR) (.pptx)
Optional: PDF (Trace & Smooth), PDF (Encrypted), PDF/XPS (Digital Signature)

Fax Specifications

Number of Connection Lines

Standard: 1
Optional: Line 2

Modem Speed

Super G3: 33.6 Kbps
G3: 14.4 Kbps

Compression Method: MH, MR, MMR, JBIG

Sending/Recording Size: Statement to Legal

Store Specifications

Advanced Box

Store-To-Remote Advanced Box:*** Supported

Print/View from Remote Advanced Box:*** Supported

Memory Media

Standard: USB Memory

Security Specifications

Standard

Department ID Management, Single Sign On-H, Access Management System (Device and Function Level Log-in), Secured Print, Trusted Platform Module, IPv6, Restricting Features (Restricting the Send Function, Restricting New Addresses on Address Book), Send to Myself (only), Send to My Personal Folder (only), SSL Encrypted Communication, SNMPv1/v3, MAC/IP Address Filtering, IEEE802.1x (wire/wireless), SMTP Authentication, POP Authentication before SMTP, HDD Initialize (Up to 9x) HDD Erase (Up to 3x), HDD Lock, IPsec, Adobe® LiveCycle® Rights Management ES2.5 Integration

* Can be installed in Cassette 2 only.

** If "Quick Startup Settings for Main Power" is set to On, it takes seven seconds until the key operation on the touch-panel display is available after turning on the main power.

*** Includes consumables except for Toner.

▲ EPS can be printed directly only from Remote User Interface.

▲▲ XPS cannot be printed directly from Web Access Software.

▲▲▲ Requires imageRUNNER ADVANCE device with Advanced Box.



As an ENERGY STAR® Partner, Canon U.S.A., Inc. has qualified these models as meeting the ENERGY STAR energy efficiency criteria through an EPA recognized certification body. ENERGY STAR and the ENERGY STAR mark are registered U.S. marks. AirPrint and the AirPrint logo are trademarks of Apple Inc. Canon, imageRUNNER, MEAP, and the GENUINE logo are registered trademarks of Canon Inc. in the United States and may also be registered trademarks or trademarks in other countries. imageWARE is a registered trademark of Canon U.S.A., Inc. in the United States and is a trademark of Canon Inc. in certain other countries. All other referenced product names and marks are trademarks of their respective owners. Specifications and availability subject to change without notice. Products are not manufactured for outdoor use; depiction of such is for artistic purposes only. Products shown with optional accessories. Some items may not be available at this time; please check for availability. All printer output images are simulated. Canon U.S.A. does not provide legal counsel or regulatory compliance consultancy, including without limitations, Sarbanes-Oxley, HIPAA, GLBA, Check 21 or the USA Patriot Act. Each customer must have its own qualified counsel determine the advisability of a particular solution as it relates to regulatory and statutory compliance. Not responsible for typographical errors. ©2018 Canon U.S.A., Inc. All rights reserved.

0518R3-500iF/400iF-PDF-IH

