



imageRUNNER ADVANCE Solutions

# ENVIRONMENT



**Conserving Resources, Maximizing Energy Efficiency,  
and Eliminating Hazardous Substances**

## Protecting the Environment

A world-class leader in imaging technologies, Canon is guided by its philosophy of *Kyosei* — living and working together for the common good. We believe that the interests of society and the environment go hand in hand, and that conservation is an integral part of any good business practice.

Canon focuses efforts on developing environmentally conscious products. Our strategy considers the entire product life cycle, emphasizing energy efficiency, resource conservation, and chemical substance control.



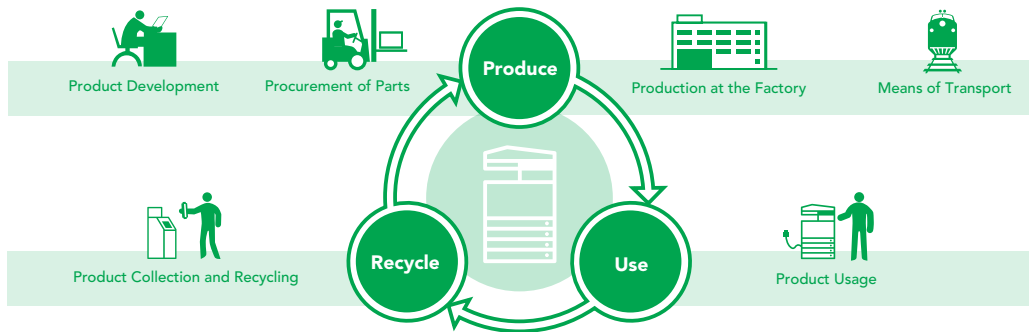
**imageRUNNER**  
ADVANCE

# Extending Resources

Canon works to minimize the environmental impact at every stage in the life of a product. We put significant effort into creating products that are smaller, lighter, easier to recycle, and that incorporate high-yield components that maximize their useful lives.

## Minimizing CO<sub>2</sub> with the Life Cycle Assessment System

Canon has a unique product design system called Life Cycle Assessment (LCA). It assesses the amount of carbon dioxide emitted during each stage in a product's life. The data produced by this system helps us continually perfect ways to minimize CO<sub>2</sub> production: from raw materials to the production, distribution, use, and disposal or recycling of our products.



## imageRUNNER ADVANCE Devices: Pioneering the Use of Recycled and Bio-Plastics

Canon has begun to develop and use plastics composed of 100% recycled material in its products. This helps to reduce the need for raw materials made from new, petroleum-based plastic.

New imageRUNNER ADVANCE systems also make use of newer bio-based plastics for certain parts. Bio-based plastics draw on the cyclical nature of plants



to help curb CO<sub>2</sub> emissions and help reduce the amount of raw materials used.

## "Waste Less" Product Design

Reducing environmental impact begins with innovative, durable, product design. Canon creates long-life parts and high-yielding supplies that help maximize uptime and reduce the amount of materials consumed during the product life cycle.

## Smaller, Lighter Products

Canon aims to make its products rank among the very smallest and lightest available in each product group. Smaller, lighter design increases transporting efficiency and reduces energy consumption.

## Recycle-Conscious Design

Canon strives to maximize the recyclability and recoverability of its products.



### Toner Cartridge Recycling

Canon voluntarily pioneered the collection of used toner cartridges in 1990 before regulations required it. Material from collected cartridges is now reused in new product parts or in material recycling.



### Toner Container Collection Program

To contribute to the goal of zero landfill waste, Canon has introduced a collection and recycling program for Canon plastic toner containers. To support local recycling efforts, a plastic resin code is engraved on each container. If toner containers cannot be recycled locally or sent to a local energy recovery facility, Canon offers a collection program.



### Business Copier Remanufacturing Program

Canon has extended the lives of thousands of products with its Factory Certified Series. These remanufactured devices are guaranteed to have the same quality and performance as new products. Canon Factory Certified Series models are produced at our U.S.-based manufacturing facility in Newport News, Virginia.

# Canon imageRUNNER ADVANCE Solutions That Help Conserve Resources

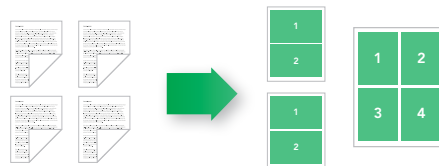
Canon solutions make it easier than ever to complete business tasks while conserving resources. The more energy-efficient Canon imageRUNNER ADVANCE devices help reduce costs and promote environmentally responsible behavior.

## Reduce Unnecessary Waste by Managing User Access and Device Modes

Easily implement resource-saving settings across the enterprise. Since walk-up users can be asked to authenticate prior to accessing capabilities, you can limit them to predefined features like two-sided output. Features can be restricted by being unavailable and grayed out.



Reduce paper output by almost half by setting duplex printing (printing on both sides of each page) as a default.



To help save more paper, you can set defaults so that pages automatically print two, four, or eight up on one sheet.



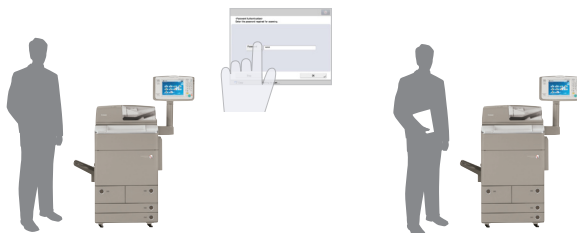
## Digitize Hard-Copy Documents

With the easy-to-use, powerful scanning capabilities of imageRUNNER ADVANCE, paper-based documents can quickly be converted into electronic files perfect for archival or distribution to other destinations.



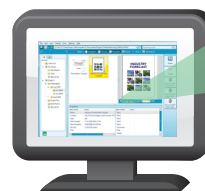
## Save Paper by Using PC Fax

Canon imageRUNNER ADVANCE Desktop enables users to drag and drop document files to a device icon to send faxes quickly and easily. Incoming faxes are converted to digital format as well. For fax users, this saves paper for both inbound and out.



## Leverage Secure Print and Mail Box Printing

With Secure Print, print jobs are held at the device until the user logs in to release them. You can also use the Mail Box to store frequently used documents for convenient on-demand output at the device. Both of these features help reduce the number of pages that might otherwise be forgotten or wasted.



## Preview Documents On-Screen to Reduce Wasted Pages

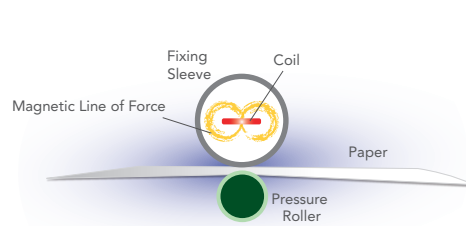
With Canon imageRUNNER ADVANCE Desktop, users can create, edit, apply finishing settings, and carefully preview a document before it is sent to print. This can prevent having to output a job several times before getting the right result.

# Maximizing Energy Efficiency Through Innovation

Canon works to reduce the environmental impact of its products by proactively developing technologies that help minimize power consumption.

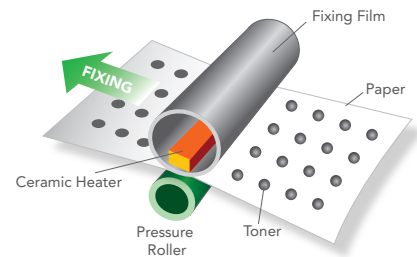
## Smart, Energy-Saving Technologies

Canon uses energy-efficient technologies such as RAPID Fusing and Induction Heating (IH) to drastically shorten warm-up times while reducing power consumption needs in MFPs and laser beam printers. These technologies are used in devices such as the imageRUNNER ADVANCE systems.



### New IH (Induction Heating) Fixing System

The IH (Induction Heating) Fixing System features a fixing roller made from a thin-walled metal pipe with a thin fluororesin mold-release layer coating. This allows high-frequency current to move through the coil into the roller much more efficiently, which results in lower energy needs overall.



### Advanced Color RAPID Fusing

Advanced Color RAPID Fusing is a proprietary fixing technology which uses a ceramic heater to apply heat onto a thin fixing sleeve, allowing instantaneous heat transfer to the fixing point.



### Toner That Requires Less Heat

Both the QF (Quick Fixing) and pQ (Pure Quality) toners have enhanced melting characteristics to fuse quickly with low heat. These Canon-developed toners maximize performance for on-demand fusing systems, helping to achieve high-quality output while using less energy. In fact, the new pQ toner further supports a reduced fusing temperature of 68 degrees Fahrenheit (20 degrees Celsius) on Color imageRUNNER ADVANCE Models.



### High-Performance Scanning with Less Energy

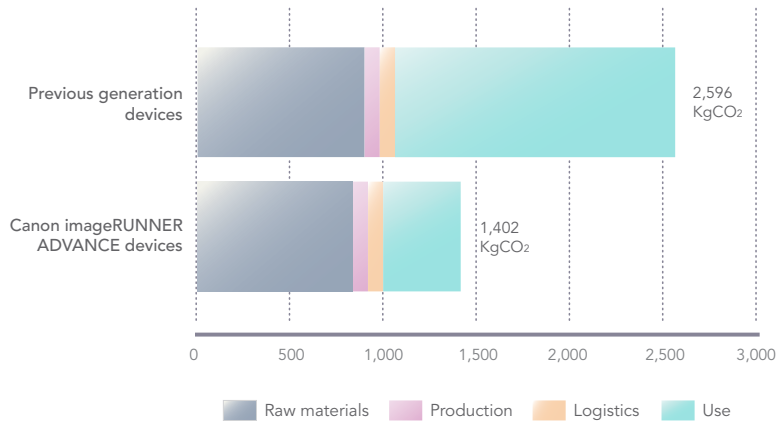
By replacing Xenon tube technology with a White LED array, the scanning light source on many new Canon imageRUNNER ADVANCE devices can achieve up to a 75 percent reduction in energy consumption. White LEDs provide additional environmental benefits by operating with less heat and offering a longer life span. In addition, Color Image Readers use a proprietary image sensor instead of a CCD, which delivers a 50 percent reduction in energy costs when compared to previous systems.





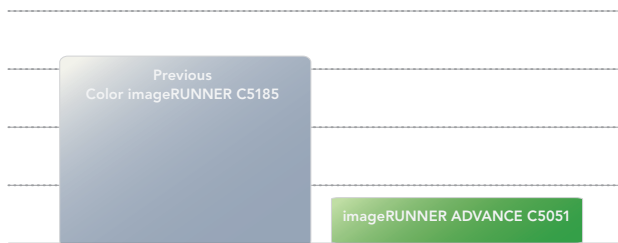
# Serious About Saving Energy?

Canon works hard to develop products that require less energy. We have long-range CO<sub>2</sub> reduction plans, and we are constantly inventing new approaches to help reduce our – and your – environmental footprint.



## Lower Typical Energy Consumption

The cumulative result of all the energy-saving technologies in our latest Canon imageRUNNER ADVANCE devices adds up to substantial savings and a lower environmental footprint. In fact, based on EPA ENERGY STAR® Typical Energy Consumption (TEC), customers can save up to 75 percent of the power consumed when compared to previous models.



Based on testing measurements over the time duration of one week comparing the kWh usage of the previous Color imageRUNNER C5185 model with the new imageRUNNER ADVANCE C5051 model.

## Reduced Power Consumption During Sleep Mode

Canon continuously improves upon previous models to achieve maximum energy savings. With our latest generation devices, we have succeeded in reducing power consumption in Sleep Mode to as low as 1W or less (1.5W or less on C9000 PRO models). Considering that office equipment remains in idle or standby mode, this could result in substantial savings over the course of the product's life.



## Reinforcing Participation and Compliance with ENERGY STAR®

The ENERGY STAR® Program, announced in 1993 by the U.S. Environmental Protection Agency (EPA), promotes the development of energy-efficient products to combat global warming and other environmental issues. As one of the leading producers of energy-efficient equipment, Canon has qualified more than 150 of its products since the program's inception. Since the ENERGY STAR® program was



announced, an impressive number of Canon copiers, printers, and multifunction peripherals have earned the ENERGY STAR® rating. All new imageRUNNER ADVANCE models qualify for the ENERGY STAR® Program.



Canon has made great strides in the improvement of energy efficiency across the entire line of imageRUNNER devices.

# Eliminating Hazardous Substances from Products

Canon has built an environmental assurance system for managing chemical substances in its products. Our in-house standards often exceed those set by industry guidelines and governmental regulations.

## Minimizing Adverse Chemicals

Canon's Product Chemical Substance Assurance System acts as a foundation for the management and verification of the chemical substance content of our products. The system is responsive to the European Union's RoHS directive on hazardous substances and helps us stay well ahead of more strict regulations likely to be introduced in the future.

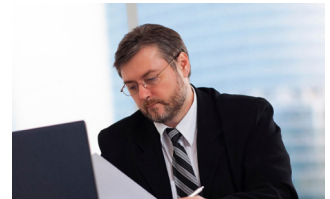
The following three components combine to form a comprehensive system capable of responding to various regulations that control hazardous substances:



1. Environmental assessment of suppliers



2. Chemical substance content survey of products



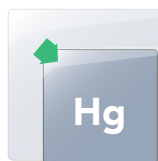
3. Analytical assessment and internal audits for risk avoidance

## Staying Ahead of Worldwide Goals and Regulation

The European Union's RoHS directive restricts, prohibits and/or controls six hazardous chemical substances. Canon goes above and beyond this requirement by restricting, prohibiting, and/or controlling a total of 24 hazardous substances.



Lead



Mercury



Cadmium



Chromium



Polybrominated biphenyls



Polybrominated diphenyl ethers



## Cultivating Responsibility with Green Procurement

Green procurement is the practice of purchasing environmentally conscious parts and materials that make Canon's products more friendly to the environment. The cooperation of suppliers is essential to the successful implementation of this concept. Our Fundamental Procurement Policies and other internal regulations are conveyed to and understood by suppliers, then carried out with their cooperation.



## Environmental Activities at Canon U.S.A.

Canon has a clear history of going beyond simple compliance to conventional environmental standards. By recognizing environmental challenges long ago, we took the initiative to act and made these concerns central to how we conduct business. As a result, Canon has regularly met milestones well ahead of regulations and competitors in the industry.



### Partnerships with Environmental Protection Agency

ENERGY STAR®

WasteWise

SmartWay



### Corporate Social Responsibility Programs

Canon participates in a number of environmental conservation programs as an extension of our *Kyosei* principles.

Eyes on Yellowstone

NATURE Series on PBS

Canon Envirothon

National Environmental Education Week (EE Week)

The Canon Earth Campaign

Clean Earth Crew



### Canon Sustainability Report

Canon publishes an annual Canon Sustainability Report on an ongoing basis. The report introduces and explains the company's economic, environmental, and social initiatives as a means of contributing to the realization of a sustainable society.



### Choose Canon with Confidence

By selecting a Canon product for your business, you choose to work with a company that offers products and programs, as well as supports activities that exhibit a genuine commitment to the environment. Our efforts translate into helping you achieve your own sustainability goals. Our corporate philosophy of *Kyosei* – living and working together for the common good – assures that we will continue to find new and innovative ways to successfully meet the environmental challenges that face us.



### Environmental Management System: ISO 14001

Canon has one of the largest Environmental Management Systems in the world, with over 700 locations certified under ISO-14001. Due to early recognition and actions to address the environmental impact, in 1995 Canon became the first company in Japan to be certified under predecessor legislation that became ISO 14001.

In our drive for comprehensive ISO 14001 certification, 13 Canon Inc. and 103 affiliated operational companies worldwide have received certification.

### Featured in this Canon RUN solution:

- Canon imageRUNNER ADVANCE Models
- Cutting CO<sub>2</sub> Emissions
- RAPID Fusing
- Induction Heat (IH) Fusing
- Recycling Efforts
- Longevity of Materials
- Ozone By product Reduction Technology
- Green Procurement Standards
- ISO 14001 Compliance Certification



1-800-OK-CANON  
www.usa.canon.com

Canon U.S.A., Inc.  
One Canon Plaza  
Lake Success, NY 11042

# LET YOUR BUSINESS RUN



CANON and IMAGERUNNER are registered trademarks of Canon Inc. in the United States and may also be registered trademarks or trademarks in other countries. IMAGEANYWARE is a trademark of Canon. All other referenced product names and marks are trademarks of their respective owners and are hereby acknowledged.  
Products shown with optional accessories/equipment.  
Specifications and availability subject to change without notice.  
©2009 Canon U.S.A., Inc. All rights reserved.