



GAIN TIME AND INSIGHT WITH INTELLIGENT GRADING



**Intelligent Grading Solution and
Canon imageRUNNER ADVANCE**

CONSIDER THIS ...

Teachers spend a lot of time testing and grading their students. Hours spent grading tests leave less time for teachers to spend on other important areas. Additionally, traditional methods of testing often lack a means to analyze results, so teachers aren't able to use test data to help identify learning gaps and improve instruction.



GRADING CAN MONOPOLIZE TIME

Teachers spend an average of 6–8 hours per week creating and grading tests.*

* InfoTrends Business Process Automation Opportunities for Vertical Markets, January 2013.



OLDER GRADING SYSTEMS CAN BE EXPENSIVE AND INFLEXIBLE

Traditional grading systems require costly pre-printed forms and dedicated single-function test grading scanners.



MANUAL GRADING HAS LIMITATIONS

There's not always enough time for teachers to analyze test results to properly assess student and class performance and identify trends.



Paper remains an ideal method to provide tests, but the time spent on grading, inputting grades, and analyzing results means they aren't always done as often as may be necessary. These less frequent tests cover more topics, and as the time between teaching, testing, analysis,

94%
OF TEACHERS
USE PAPER
TO ADMINISTER
TESTS

and feedback grows, there's less opportunity to address learning gaps and refine class instruction. Teachers already have busy schedules. They need a more efficient grading solution that produces results, without adding to an already overwhelming workload.

* InfoTrends Business Process Automation Opportunities for Vertical Markets, January 2013.

GAIN VALUABLE INSIGHT WHILE SAVING TIME AND MONEY

HOW IT HELPS

The Intelligent Grading Solution can reduce the hours spent grading, freeing up time to focus on students and curriculum. Educators can easily create and print blank multiple choice test sheets at a Canon imageRUNNER ADVANCE device equipped with the solution, and then automatically grade them via the embedded online cloud application. In-depth reports provide insightful analysis allowing teachers to identify students and curriculum that needs further attention.



SAVE TIME

Spend less time creating and grading tests and more time on curriculum development.



ANALYZE STUDENT AND CLASS PERFORMANCE

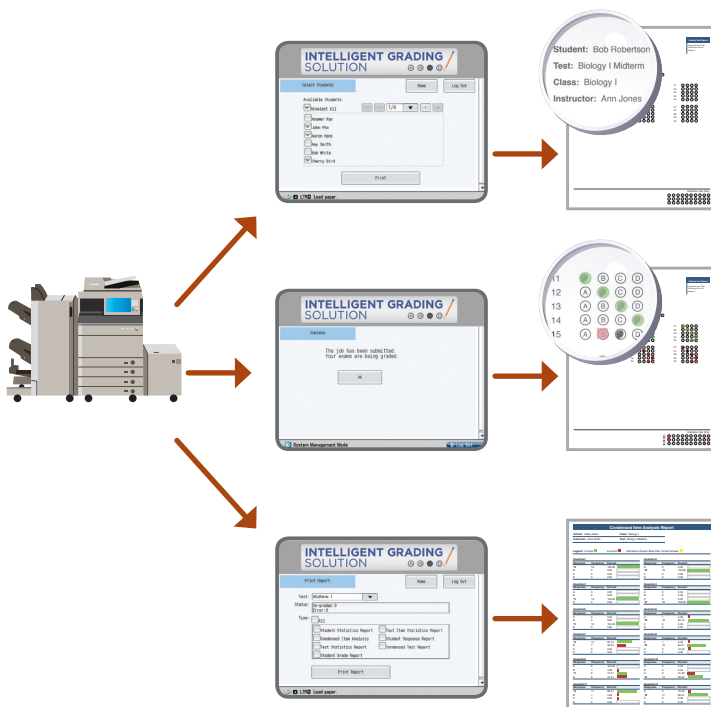
Review overall class and exam performance and identify trends with detailed printed reports.



REDUCE COST

Create answer sheets on plain paper instead of expensive pre-printed forms.

HOW IT WORKS



1

CREATE A TEST

After signing in at the device, create a blank test sheet or select a template from the interface of the Canon imageRUNNER ADVANCE, and print it. Exams can be printed with student names, number of questions, and number of answer choices.

2

GRADE A TEST

Administer the test, and scan the results and answer key into the imageRUNNER ADVANCE device. The embedded cloud-based application quickly grades the test sheets—marked in pen or pencil—and sends the results back to the device.

3

PRINT REPORTS

Select one or more output reports depending on how you would like to review the data. Print the reports or e-mail them to yourself.

THE INTELLIGENT GRADING SOLUTION HELPS SIMPLIFY THE TESTING AND GRADING PROCESS

THE BENEFITS ARE CLEAR

- Save time creating and grading tests
- Create tests on plain paper on demand
- Analyze results and identify learning gaps
- Leverage Canon imageRUNNER ADVANCE devices for grading instead of using dedicated servers and scanners
- Use cloud-based software that requires minimal IT oversight to maintain



Tests can be a stressful event for teachers, as well as students. The Intelligent Grading Solution and imageRUNNER ADVANCE MFPs enable teachers to create tests and monitor progress in an efficient way so they can focus on student and class development.



usa.canon.com/advancedsolutionsforeducation

