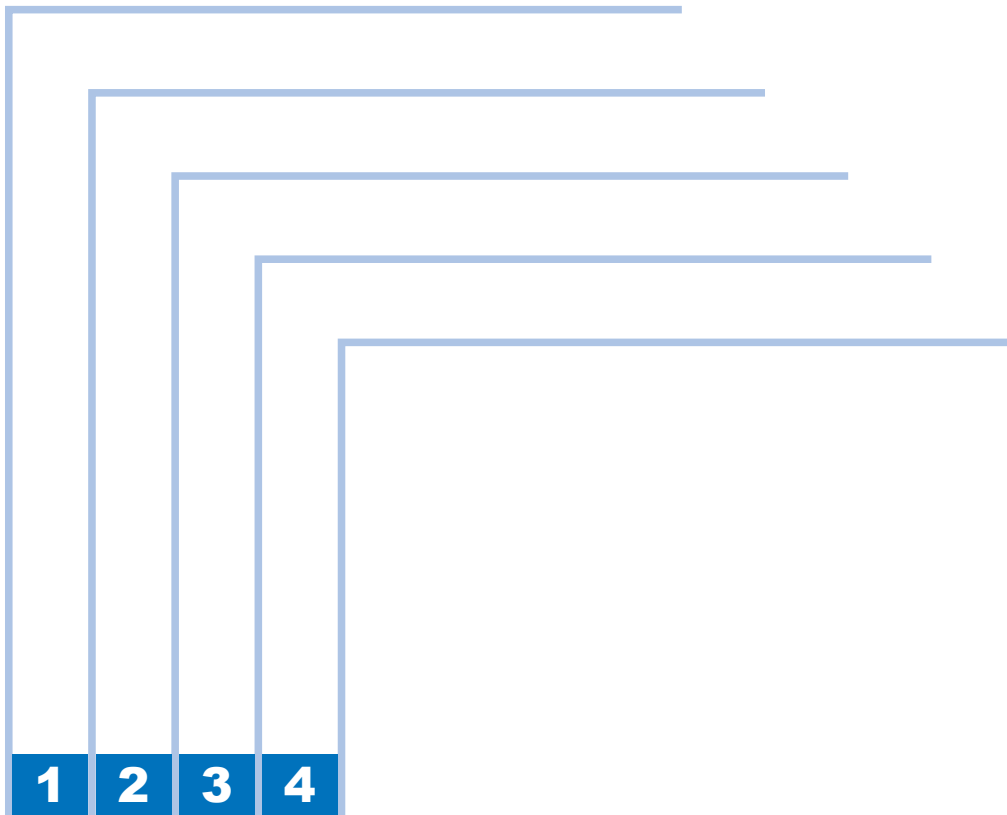




August 30, 2012
Revision 0

PS Printer Kit-AV1

Service Manual



Application

This manual has been issued by Canon Inc. for qualified persons to learn technical theory, installation, maintenance, and repair of products. This manual covers all localities where the products are sold. For this reason, there may be information in this manual that does not apply to your locality.

Corrections

This manual may contain technical inaccuracies or typographical errors due to improvements or changes in products. When changes occur in applicable products or in the contents of this manual, Canon will release technical information as the need arises. In the event of major changes in the contents of this manual over a long or short period, Canon will issue a new edition of this manual.

The following paragraph does not apply to any countries where such provisions are inconsistent with local law.

Trademarks

The product names and company names used in this manual are the registered trademarks of the individual companies.

Copyright

This manual is copyrighted with all rights reserved. Under the copyright laws, this manual may not be copied, reproduced or translated into another language, in whole or in part, without the consent of Canon Inc.















© CANON INC. 2012

Caution

Use of this manual should be strictly supervised to avoid disclosure of confidential information.



Explanation of Symbols

The following symbols are used throughout this Service Manual.

Symbols	Explanation	Symbols	Explanation
	Check.		Remove the claw.
	Check visually.		Insert the claw.
	Check the noise.		Use the bundled part.
	Disconnect the connector.		Push the part.
	Connect the connector.		Plug the power cable.
	Remove the cable/wire from the cable guide or wire saddle.		Turn on the power.
	Set the cable/wire to the cable guide or wire saddle.		
	Remove the screw.		
	Tighten the screw.		

The following rules apply throughout this Service Manual:

1. Each chapter contains sections explaining the purpose of specific functions and the relationship between electrical and mechanical systems with reference to the timing of operation.

In the diagrams,  represents the path of mechanical drive; where a signal name accompanies the symbol, the arrow  indicates the direction of the electric signal.

The expression "turn on the power" means flipping on the power switch, closing the front door, and closing the delivery unit door, which results in supplying the machine with power.

2. In the digital circuits, '1' is used to indicate that the voltage level of a given signal is "High", while '0' is used to indicate "Low". (The voltage value, however, differs from circuit to circuit.) In addition, the asterisk (*) as in "DRMD*" indicates that the DRMD signal goes on when '0'.

In practically all cases, the internal mechanisms of a microprocessor cannot be checked in the field. Therefore, the operations of the microprocessors used in the machines are not discussed: they are explained in terms of from sensors to the input of the DC controller PCB and from the output of the DC controller PCB to the loads.

The descriptions in this Service Manual are subject to change without notice for product improvement or other purposes, and major changes will be communicated in the form of Service Information bulletins.

All service persons are expected to have a good understanding of the contents of this Service Manual and all relevant Service Information bulletins and be able to identify and isolate faults in the machine.

Contents

1 Specifications

Specifications	1-2
Printer accessory configuration	1-2
License configuration of the printer option	1-3
The host-client relationship of the printer option:	1-3
How to confirm the activated printer option license:	1-3
UFR II Printer Driver	1-4
FONT HANDLING:	1-4
Paper Size:	1-4
Effective print area of UFR II	1-4
Effective print area	1-4
Finishing	1-4
Data processing	1-5
Supported operating systems	1-5
PCL Printer Driver	1-6
FONT HANDLING:	1-6
Raster Mode	1-6
Effective print area of PCL	1-6
Data processing	1-6
Supported operating systems	1-6
PS Printer Driver	1-7
Target PDL:	1-7
FONT HANDLING:	1-7
Basic Specification(Direct Print PDF)	1-8
Limitations(Direct Print)	1-9
It is not possible to send to multiple PDF files simultaneously.	1-9
Page range for page label cannot be specified.	1-9
Original print specification	1-9
Encrypted file	1-9
Printing Restrictions	1-9
Halftone screen	1-10
PJTF	1-10
Font substitution	1-10

2 Functions

Printer driver	2-2
Get Device Status	2-2
Corresponding section	2-2
Precondition	2-2
Prospect	2-3
Printing Start Position Settings	2-3
Corresponding section	2-3
Precondition	2-4

3 Installation

Installation Procedure	3-2
Overview of the Installation Procedure	3-2

4 Maintenance

Notes when service	4-2
Points to Note	4-2
Related Error Code	4-3
Confirm method of error code	4-3
#853	4-4
Imaging(error)	4-5
Initialization error	4-5
Work Memory full	4-5
Invalid data	4-5
Processing error	4-5
PDF error message(Direct Print)	4-6
Error XPS Direct Print	4-7



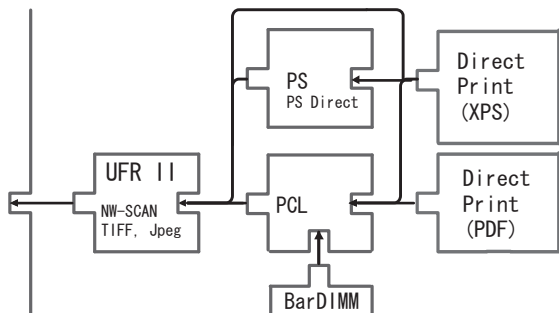
Specifications

■ Specifications

Specifications

Printer accessory configuration

Since every printer accessory is a license accessory, it is necessary to follow the LMS instructions, obtain the number of license information, and enter it into the host machine.



F-1-1

TIFF and JPEG in Direct Printing by structure of UFR II.

The following two methods enable Direct Print function.

- Download of the PDF or XPS, TIFF(JPEG) file which becomes usable with Direct Print Kit(for PDF/XPS)-H1.
- Download of the PDF or PS file which becomes usable with PS Printer Kit.

	Function	UFR II, PCL Printer Kit	Direct Print Kit XPS	PS Printer Kit	Direct Print Kit PDF
RUI	File	TIFF(JPEG)	OK	NG	NG
		PDF	NG	NG	OK
		XPS	NG	OK	NG
		PS	NG	NG	OK
Web browser content print	File	TIFF(JPEG)	NG	NG	NG
		PDF	NG	NG	OK
		XPS	NG	NG	NG

T-1-1

OK: It is possible to print directly.

NG: It is not possible to print directly.

The Direct Print from Web browser becomes enabled when PS Unit is connected.

License configuration of the printer option

The host-client relationship of the printer option:

In PCL and the PS, a validation is possible individually.

There is not the dependency.

When PS license is made effectively, You cannot install the Direct PDF license.

Even if a PDF license is made effectively, You can install the PS license.

How to confirm the activated printer option license:

The options displayed by selecting [counter confirmation key > device configuration confirmation] for the users in the operation panel are individual functions (such as UFR II+ PCL), not the names of the purchased options.

Consequently, the license certificate is the only way to see the combination of options.

Enter the service mode level 2 and go to the service mode described below. Then the license condition is displayed and transfer inactivation can be executed.

Copier>Option>LCNS-TR

The field No.1 in the table below shows the activated/inactivated condition of UFR II, PCL, and PS in the service mode.

*marked service code must be used for the license transfer inactivation. Other operations do not work appropriately.

UFR II(standard)		
ST-LXUFR	1	Shows the UFR II installation condition.
PCL Printer Kit		
ST-PCL	1*	Shows the PCL installation condition.
PS Printer Kit		
ST-PS	1*	Shows the PS installation condition.

T-1-2

UFR II Printer Driver

FONT HANDLING:

UFR II mode:

Device fonts are available for the UFR II driver.

Image mode:

All fonts are not available for the UFR II driver.

Paper Size:

Paper Name	Paper Size (mm)	
	Width	Length
LETTER	215.9	279.4
11 x 17	279.4	431.8
LEGAL	215.9	355.6
A5	148.5	210.0
B5	182.0	257.0
A4	210.0	297.0
B4	257.0	364.0
A3	297.0	420.0
Custom Paper Size Minimum	100.0 x 148.0	
Custom Paper Size Maximum	297.0 x 487.7	

T-1-3

Effective print area of UFR II

	Effective print area(mm)		Distance between the paper edge and the printing available area (mm)	
	Main scanning	Sub scanning	Main scanning	Sub scanning
Custom Size Minimum	90.00	138.00	5.00	5.00
Custom Size Maximum	287.00*	447.70*	5.00	5.00
Long sheet Maximum	287.00*	620.00	5.00	5.00

T-1-4

* The printable area of the host machine is shown.

The host machine print guarantee area narrows more than this.

Effective print area

	Main scanning(mm)	Sub scanning(mm)	
Blank space to need(mm)	2.5	Top:3.0	Back:2.0
Maximum printable area(mm)	292.0	625.0	
Maximum certified print area(mm)	292.0	426.7	

T-1-5

Finishing

	Comment	A3 B4 11x17 Leagal	A4 LTR	A4R	B5	B5R	A5R	LTR -R	Custom Paper
Pickup Direction		S	L	S	L	S	S	S	L
Group		OK	OK	OK	OK	OK	OK	OK	OK
Rotate Print Data	Available only when Finisher is not installed.	N/A	OK	OK	OK	OK	N/A	OK	N/A
Offset	Available only when Finisher is installed.	OK	OK	OK	OK	C	N/A	OK	N/A
Staple + Collate									
Staple + Group	Available only when Finisher is installed.	OK	OK	OK	OK	C	N/A	OK	N/A
Hole Punch	Available only when both Finisher and Professional Puncher are installed.	OK	OK	OK	OK	OK	N/A	OK	N/A
Z-fold	Available only when both Finisher and Paper Folding Unit are installed.	OK	C	OK	N/A	N/A	N/A	OK	N/A
C-fold Half Fold Accordion Z-fold Double Parallel Fold	Available only when both Finisher and Paper Folding Unit are installed.	N/A	C	OK	N/A	N/A	N/A	OK	N/A
Booklet Printing		OK	OK	OK	OK	OK	OK	OK	OK
For Booklet Printing, Fold Only/Fold + Saddle Stitch/Fold + Saddle Stitch + Trim	Available only when Booklet Finisher is installed.	OK	C	OK	N/A	N/A	N/A	OK	X

OK: Finishing available, N/A: Finishing not available, C: setting is possible but print is unavailable.

*1: The specifications define that when custom size is out of [182.0 - 432.0]N/A[210.0 - 297.0], shift is unavailable.

*2: The specifications define that when custom size is out of [210.0 - 330.2]N/A[279.3 - 487.7], saddle hold, saddle stitch and trimmer are unavailable.

Note that there is no limitation on UI, so setting figures out of the above range is possible.

T-1-6

■ Data processing

600dpi / 1200dpi

■ Supported operating systems

Windows Printer Driver: effect from Version 20.40

Microsoft Windows 2000 Professional/Server

Microsoft Windows XP Home Edition/Professional (32bit)

Microsoft Windows XP Professional x64 Edition (64bit)

Microsoft Windows Vista (32bit)

Microsoft Windows Vista x64 Edition (64bit)

Microsoft Windows Server 2003 (32bit)

Microsoft Windows Server 2003 x64 Edition (64bit)

Microsoft Windows Server 2008 (32bit)

Microsoft Windows Server 2008 x64 Edition (64bit)

Microsoft Windows 7

MacOS X x10.4.9 later

PCL Printer Driver

■ FONT HANDLING:

● PCL5

HP-GL/2 Mode

Texts are handled in the PCL mode, or in the HP-GL/2 mode if:

- 1.Character are clipped.
- 2.Character are rotated.

Supported typefaces include:

1. Standard
2. Italic
3. Bold
4. Bold Italic

■ Raster Mode

Use of a device font is determined by the driver setting.

If a device font is used, the Raster Mode will handle data the same as the HP-GL/2 Mode.

If not, the following restrictions will be imposed.

*GDI Raster Fonts unavailable 1 byte fonts such as Courier, MS Sans Serif, MS Serif, etc.

*GDI Vector Fonts available 1 byte fonts such as Modern, Roman, Script, etc.

*TrueType Fonts available 1 byte fonts such as Arial, Courier New, Symbol, Times New Roman, etc.

NOTE:

GDI Vector Fonts and TrueType Fonts become available only after added to Windows.

■ Effective print area of PCL

	Effective print area(mm)		Distance between the paper edge and the printing available area (mm)	
	Main scanning	Sub scanning	Main scanning	Sub scanning
Custom Size	91.54	139.54	4.23	4.23
Minimum				
Custom Size	*288.54	479.24	4.23	4.23
Maximum				

T-1-7

* : out of a guarantee

*

The printable area of the host machine is shown.

The host machine print guarantee area narrows more than this.

■ Data processing

PCL 5 600dpi

PCL 6 600/1200dpi

■ Supported operating systems

Canon PCL5e/5c Printer Driver - Version 20.40

Windows XP/Server 2003/Vista/Server 2008/7:

Windows XP x64/Server2003 x64/Vista/ Server 2008 x64/

7 x 64/ Server 2008 R2 (x64):

Canon PCL6 Printer Driver - Version 20.40

Windows XP/Server 2003/Vista/Server 2008/7:

Windows XP x64/Server2003 x64/Vista/ Server 2008 x64/

7 x 64/ Server 2008 R2 (x64):

PS Printer Driver

Target PDL:

Adobe PostScript Level3 3017

FONT HANDLING:

PS3

PostScript PDL boards support the following font types.

-Type 0, 1, 2, 3, 4, 5, 6, 9, 10, 11, 14, 32 and 42

-CIDFontType 0, 1, 2 and 4

Data processing

600 / 1200 dpi

Effective print area of PS

	Effective print area(mm)		Distance between the paper edge and the printing available area (mm)	
	Main scanning	Sub scanning	Main scanning	Sub scanning
Custom Size Minimum	92.00	140.00	4.00	4.00
Custom Size Maximum	289.00	479.70	4.00	6.10

T-1-8

* The printable area of the host machine is shown.

The host machine print guarantee area narrows more than this.

Supported operating systems

Windows Driver Version 20.40

[32-bit] Windows XP/Server2003/Vista/Sever2008/Windows7

[64-bit] Windows XP/Server2003/Vista/Server 2008/Windows7/Server2008R2

PPD V3.00

MacOS X(10.2.8 later)

MacOS (MacOS 9.1 later and LaserWriter required)

Windows OS which running PageMaker, QuarkXPress

Basic Specification(Direct Print PDF)

Specification/Functions		Content
Indispensable option		Direct Print Kit-H1
Indispensable Environment		Memory Size : 1.0GB
Correspondence PDF		PDF Ver 1.7*
Correspondence TIFF		TIFF Ver 6.0
Paper handling	Printing area	Horizontal scanning line : Parts except blank of 4.0mm Vertical scanning line : Parts except blank of Top:4.0mm Bottom:4.0mm
	Paper size	It is the same as the main body specification.
	Paper type	It is the same as the main body specification.
Number of copies		1 - 9999
Finisher		None*, Collating, Rotate Collating, Rotate Grouping, Offset Collating, Offset Grouping, and Staple Sort
Staple position		Corner (Upper-Left)*, Double (Top), Corner (Upper-Right), Double (Right), Corner (Lower-Right), Double (Bottom), Corner (Lower-Left), and Double (Left)
Hole punch		Two holes, three holes, and four holes(This setting is decided at the shipment according to the countries.)

T-1-9

Available printing area:

Direct Print of PDF file:

The inside area of 4.0 mm from the lead edge, 4.0 mm from the trail edge, and 4.0 mm each from both sides

0 mm mode can be supported.

Direct Print of TIFF / JPEG:

The inside area of 5.0 mm from the edges

If [Enlarge Printing area] is set to on, all margins become 0mm so that the available printing area is extended to the whole area of paper.

If the aspect ratio of image is same as that of the specified paper size, the image can be printed without margins around the image.

No print is made, however, on the outside of the available printing area set in the copier: the inside of 4.5 mm from the lead edge, 2.0 mm from the trail edge, and 2.5 mm each from both sides.

*Corresponding to PDF Ver1.7. Except the page size of PDF getting over 200 inches and the file size of PDF getting over 2GB.

Limitations(Direct Print)

It is not possible to send to multiple PDF files simultaneously.

When a job is forwarded using the remote UI, PDF file cannot be forwarded from multiple host terminals simultaneously. When a PDF file is forwarded from one host PC and the other host PC simultaneously, the error is displayed on the latter host PC. However, even while forwarding the PDF file from one host PC, the other host PC can operate the remote UI and forward the other PDL job simultaneously.

Page range for page label cannot be specified.

Specifying Page range for the page label which is supported in PDF Ver1.3 (e.g. Contents is used Roman numbers and the text is used Arabic numbers) is not supported.

Original print specification

PDF aims to be viewed by the viewer, so you need to specify the print operations originally. The following items are summed the specifications of the original print.

1. Annotation print

Print of each annotation is shown below. When NG is placed, the annotation cannot be printed.

It is specifiable whether to do the annotation print. (Default is to print)

The annotation window displayed when the annotation is selected on Acrobat Reader is not printed. PDF file format specification is that you can specify whether an individual annotation is printed or not, but specifying this is ignored.

Annotation type	Can be printed?	Remarks
Markup	OK	
Text	OK	
Link	OK	
FreeText	OK	XHTML, XML, CSS are not support
Line	OK	
Square and Circle	OK	
Polygon and Polyline	OK	
Text Markup	OK	
Caret	OK	
Rubber Stamp	OK	
Ink	OK	
Popup	NG	For a PDF Viewer.
File Attachment	OK	Prints as icon
Sound	OK	Prints as icon
Movie	OK	Not supporting extracting from movie files.

Annotation type	Can be printed?	Remarks
Screen	OK	
Widget	OK	
Printer's Mark	OK	
Trap Network	OK	
Watermark	NG	

T-1-10

Encrypted file

Decoding the PDF file encrypted by encryption algorithm RC4 128bit is supported.

- The cryption key is input with remote UI as a password (maximum : 32 characters - half size of charactor), forwarded to the device with the plaintext, and decoded.
- When both the user password and the owner password are set to the document, either password can be accepted.
- When only the owner password is set to the document, entering the password is unnecessary.

If the password authentication fails, or any of the restrictions on printing applies, no printing will occur and the session will end by indicating an error message in the control panel.

Decoding is supported only if the file has been encoded using the Standard Security Handler (PDF standard).

Printing Restrictions

Introducing a PDF file not having printing permission will not initiate printing unless the following is true:

- The file has been given an owner password, and the password is entered correctly.

Introducing a PDF file having permission for low-resolution printing will not initiate printing if the following is true:

- The file has been given a user password, but the password is entered incorrectly (i.e., an illegal password is entered).
- The file has been given both owner password and user password, but one of them is entered incorrectly (e.g., an illegal password is entered).

Password assigned to the PDF file	Results of password authentication	Permission/prohibition of printing
Owner and user	Authenticated as owner	Permit printing (The low-resolution printing restriction will be removed, and printing will be at a high resolution.)
	Authenticated as user	Printed according to printing restrictions. (The low-resolution printing restriction will be removed, and printing will be at a high resolution.)
	Authentication denied	Prohibit printing (An error will be issued.)
Owner	Authenticated as owner	Permit printing (The low-resolution printing restriction will be removed, and printing will be at a high resolution.) Printing according to printing restrictions
	Authentication denied (authenticated as user)	Prohibit printing (An error will be issued.)
User	Authenticate as user for printing.	Printed according to printing restrictions. (The low-resolution printing restriction will be removed, and printing will be at a high resolution.)
	Authentication denied (authenticated as user)	Prohibit printing (An error will be issued.)
None		Printed according to printing restrictions. (The low-resolution printing restriction will be removed, and printing will be at a high resolution.)

T-1-11

■ Halftone screen

When half tone screen is used in a PDF file, the said half tone is not applied to the output.

■ PJTF

The job control instruction by PJTF(Portable Jot Ticket Format) is not supported. It is ignored.

■ Font substitution

When the European character font specified by PDF doesn't exist, it is substituted by the multiple master font. However, it doesn't adjust the width of the character when the Chinese character font is substituted, so the position of the output might be displaced, depending on the substituted characters. (This is same as the Adobe PS machine).



Functions

- Printer Driver

Printer driver

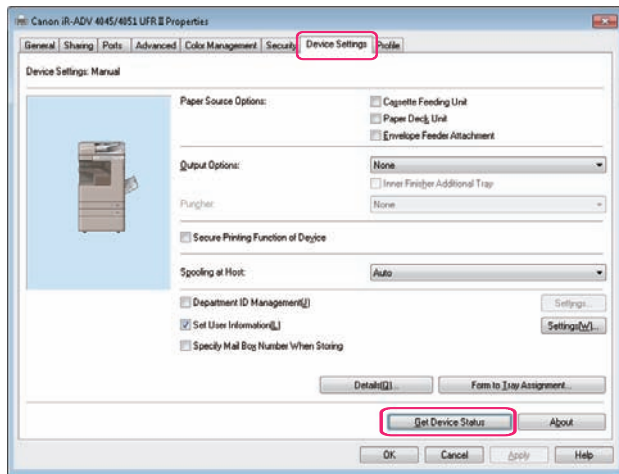
The setting method of the printer driver.

Get Device Status

Corresponding section

- Start > Devices and Printers > Printers > Printer properties
- Device Settings > Get Device Status

Pressing the [Get Device Status] button in the Device Settings tab enables to obtain automatically the configuration of the pickup options and delivery options which are connected.

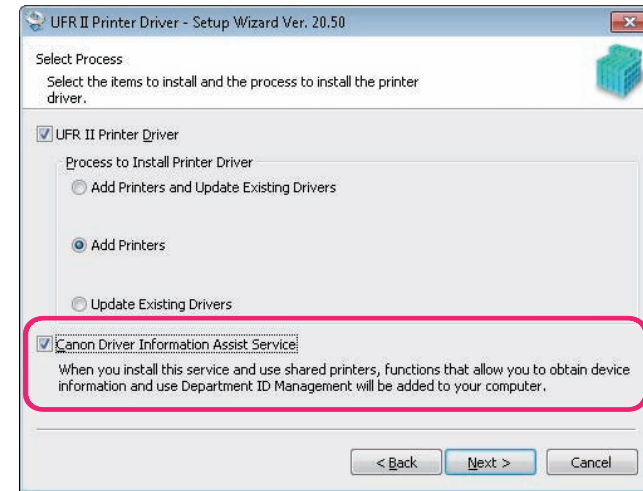


F-2-1

Precondition

To enable this function, following settings are required.

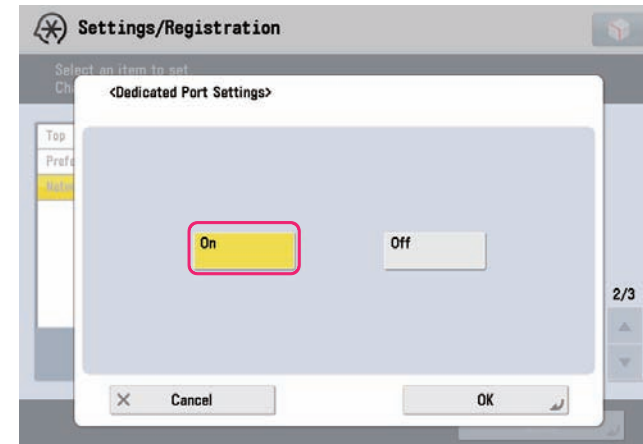
1. The host machine is connected to the TCP/IP network and is in the state where it can communicate with a PC in which a printer driver is installed.
2. When installing a printer driver, the checkbox of "Canon Driver Information Assist Service" is selected.



F-2-2

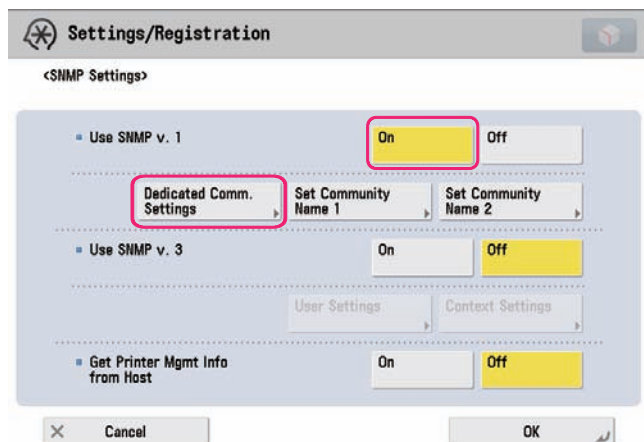
3. perform the next setting

- Settings/Registration > Network Settings > [Dedicated Port Settings] > On

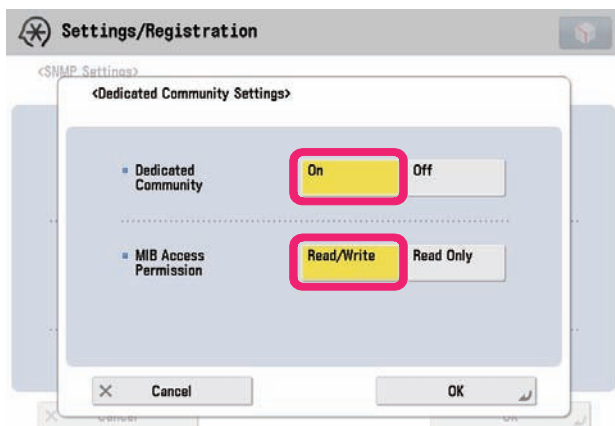


F-2-3

- Use SNMP v.1 > ON
- Dedicated Comm. Settings > [ON]
- MIB Access Permission > [Read/Write]



F-2-4



F-2-5

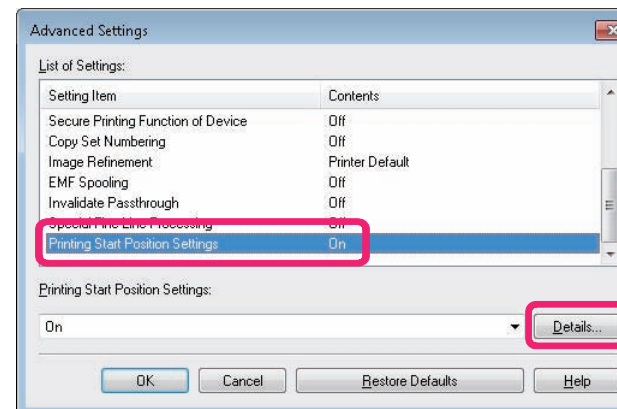
■ Prospect

The settings of the host machine needs to be enabled because the Dedicated Port is used for communication between the PC and the host machine upon [Get Device Status]. Since the Dedicated Port uses TCP/IP, it cannot be used in the case of USB connection only.

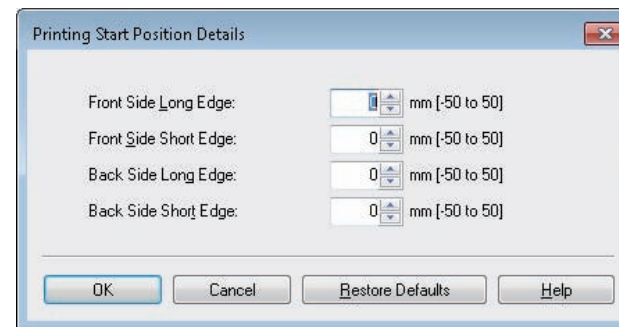
● Printing Start Position Settings

■ Corresponding section

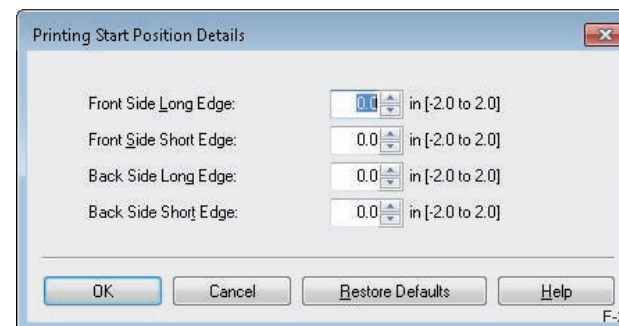
- Select Start > Devices and Printers > Printers > Printer properties.
- General > Finishing > Advanced Settings > Printing Start Position Settings > On > Details



F-2-6



F-2-7

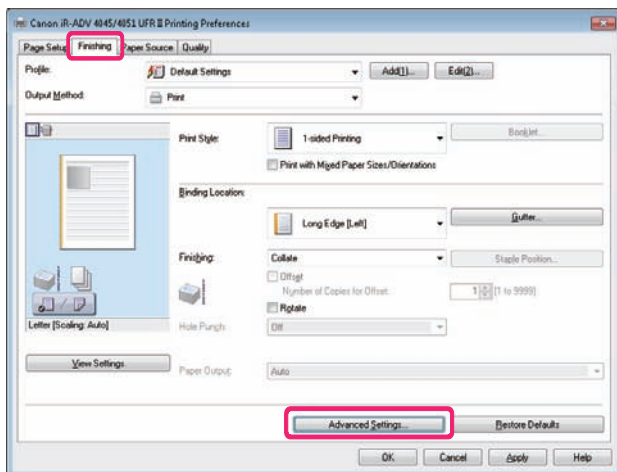


F-2-8

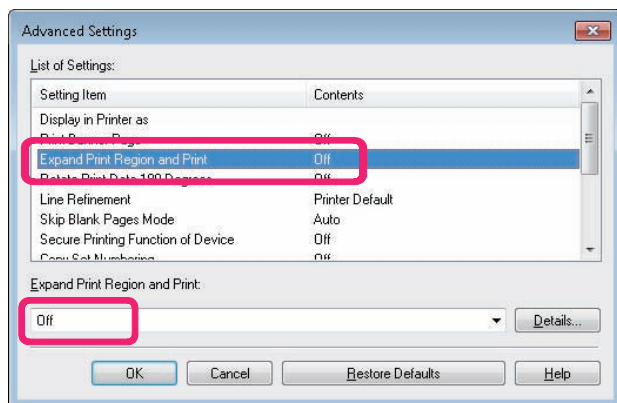
Precondition

Adjustment of Printing Start Position for the host machine is performed. (In particular, adjustment for each paper source to be used)

Check that the same values are set for all the margin widths around the original, or check that "Off" is set for General > Finishing > Advanced Settings > Expand Print Region and Print in the printer property.



F-2-9



F-2-10



Installation

- Installation procedure

Installation Procedure

Overview of the Installation Procedure

As a rule, the user is expected to obtain a license key and register it to the device. Detailed instructions are found in the User's Guide. The following is an outline of the instructions:

1. Using the following URL, access the LMS, and obtain the license key by following the instructions shown on the screen:

<http://www.canon.com/lms/license/>

Memo

A license key is issued in exchange for the 16-digit number indicated on the License Access Number Certificate and the serial number of the device (e.g., ABC01234) to which the license will be registered. The device serial number will be indicated in response to a press on the Counter key on the iR device (under [Serial Number]).

2. Copy the 24-digit number shown on the Web browser screen in the space given for the purpose on the License Access Number Certificate sheet.

Important

Be sure to double-check the number to avoid an error. Be sure that the user is aware of the importance of the License Access Number Certificate and that it must be stored away in a safe place.

3. Make the following selections: user mode>system control setup>license control. Then, type in the 16-digit number, and click [Execute]. In response, the license key will be registered and the appropriate functions will be enabled. Otherwise, any of the following error messages will appear:

"The number of the license key is not correct. Check the license key."

>> Make sure that the license key is not issued for a different device.

>> Make sure that the number has been correctly typed in.

>> Make sure that the license key is the correct one.

"The function has already been enabled."

>> Make sure that the Kit has not already been enabled.

4. Turn off the main power switch and turn it back on.

5. The registered license will become valid when the device is turned back on. When it has started normally, press the Counter key, and click the Device Configuration button to make sure that the Kit is indicated as part of the options.



Maintenance

- Notes when service
- Related Error code

Notes when service

Points to Note

When performing service on this kit in the field, note the following cautions and reference items.

- With regard to paper size and margin size, depending on calculation errors in the system,application software and driver, or due to the paper feed accuracy of the printer, paper shrinkage or stretching caused by heat and or humidity, the actual sizes may be greater or smaller than the specified or desired size.
- Supported fonts can be used by adding to the Windows fonts.

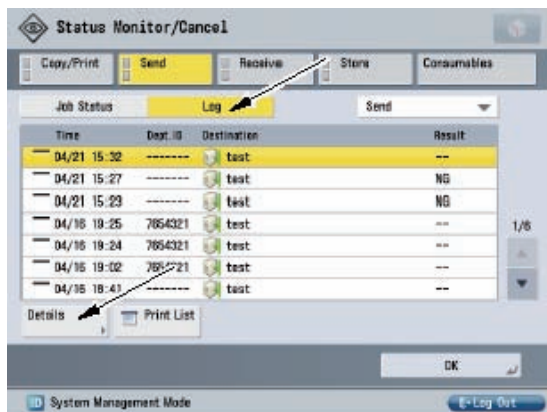
Related Error Code

Confirm method of error code

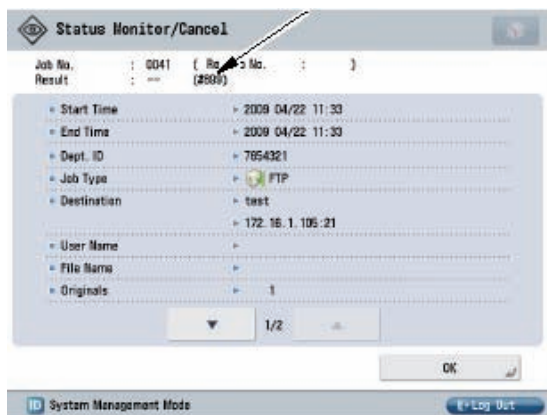
The error code is displayed in the touch panel by the figure of # XXX.

There is an error message list in the user guide.

The corresponding content of the error is confirmed.



F-4-1



F-4-2

#853

Some jobs entered by the iR host machine may be cancelled even if the printing instruction is given to the iR host machine from the PC.

If you check the error code in the following operations, you can obtain the reference information which can specify the cause.

Press 'System state/Stop' button on the lower right of the control panel to display the job history.

Select a job that resulted in NG, press 'Further information' button, then the error code is displayed in the space of Result.

The error code "#853" (An error or non-support function is detected in the host machine and the job is canceled) has 30 or more causes. It has been difficult to specify the cause, as 30 or more causes are lumped together as #853.

The details of the cause of Job cancel are shown in the list below.

First, codes: #xxx shown in the attachment list, are allocated to the causes that are lumped together as #853 in Job history on the UI screen.

Select FUNCTION > MISC-P > PJH-P-1/2, then detailed codes in the list below are displayed.

	State	Cause	Remedy	
#853	32	Job cancel due to spool over of CPCA Send data (Job type: Print job, PC-FAX job)	When 'Spool' is set to 'ON', the data received from the Host cannot be spooled completely because the spool area (HDD) of the received data is full.	Use Spool function under System Control Setup > Network Setup in service mode. Re-send the data after the Spool function is set to 'OFF'.
	2	The number of Binder and Document of CPCA exceeds the upper limit (Total 400/each in whole device)	The number of Binder and Document exceeds the upper limit during the processing of received data.	Try to print again after all jobs are finished. If the print job cannot be done, check the sent data.
	38	The number of secure jobs exceeds the upper limit. (Even though the number of normal PDL print exceeds the upper limit, the job itself is not recorded in the history, as the job is not created at that point. In secure job, exceeding the upper limit may occur, as the job is kept until printing is completed.)	The number of entered secure jobs exceeds the limit of jobs receivable at a time.	Execute the secure jobs accumulated in the host machine or delete them, and then try to execute again.

T-4-1

A detailed history report is output so that users can check the internal (CPCA job log) detailed cause in service mode, since detailed causes are grouped to some extent on the UI display.

But, this report shows only PDL print job.

FUNCTION > MISC-P > PJH-P-1 (Latest 100 jobs)

FUNCTION > MISC-P > PJH-P-2 (Max. 5,000 jobs)

Imaging(error)

When an error is detected in TIFF or JPEG image except PDF while the direct print function works, it conducts error processing.

Following errors are detected during direct print processing.

- Initialization error
- Work Memory full
- Invalid data
- Processing error

■ Initialization error

This error occurs when specified memory cannot be allocated at the startup of direct print function. When initialization error is detected, the function prints pages that have already been rendered and executes the following processing.

- Regardless of [Warning display] setting in IMAGING set up menu, it displays an error message on the panel and moves to error state.

After moving to the error state, turning the power on/off by user operation is the only way to return the function to the normal operating state.

■ Work Memory full

This error occurs when necessary memory for imaging process is exhausted. When memory full error is detected, the function prints pages that have already been rendered and executes the following processing.

- Regardless of [Warning display] setting in IMAGING set up menu, it displays an error message on the panel and moves to error state.

After moving to the error state, if the job is canceled by user operation, it returns to normal, skips importing the remaining data, and ends.

■ Invalid data

This error occurs when invalid data, which is impossible to be analyzed, is detected during data analysis of JPEG or TIFF. When the direct print function detects invalid data, it prints pages that have already been rendered and executes either of the followings. After that, if it is possible to continue the processing, printing job of the remaining data is done. If it is impossible to continue the processing, it skips importing the remaining data in printing job and ends.

- If [Warning display] is set to 'ON', it displays an error message and moves to error state.

After that, if the job is cancelled by user operation, it returns to normal.

- If [Warning display] is set to 'OFF', it does neither display any message nor move to error state.

■ Processing error

This error occurs when something abnormal is detected while the direct printing function works. For example, an error that occurs when the function is importing data from receiving buffer, or an error that occurs when the function is accessing to hard disk. When this translator detects a processing error, it prints pages that have already been rendered and executes the following.

- Regardless of [Warning display] setting in IMAGING set up menu, it displays an error message on the panel and moves to error state.

After that, if the job is canceled by user operation, it returns to normal, skips importing the remaining data, and ends.

PDF error message(Direct Print)

When some reasons make printing impossible during direct print, a message indicating the trouble appears on the touch panel while the error lamp is blinking.

Type	Message	Nature of error	Error level	Recovery
05 PDF analysis error	Printer PDF memory overflow	The work memory has become full (or exhausted).	Error	Recovery by skipping (manual)
Data cannot be decoded.	Printer PDF data decoding error	Data cannot be decoded because there is no decoding key, the decoding key is wrong, or printing is not permitted.	Error	Recovery by skipping (manual)
The specified printing range is illegal.	Printer PDF printing range error	The rate of the specified printing page is illegal.	Error	Recovery by skipping (auto)
Definition error (not defined)	Printer PDF error	An error not defined by error code has occurred.	Error	Recovery by skipping (manual)

T-4-2

 Error XPS Direct Print

Type	Message	Continuance of processing	Cause	Remedy	Recovery
Analysis Error	XPS data error	Auto	Improper order is specified due to corrupted data, etc., so processing cannot be continued.	1.Press the online button to continue the processing. However, the output result of the page including the target area is not guaranteed. 2.Print again with the XPS data format which the printer supports.	Cancel the target job.
Analysis Error	XPS page data error	Auto	Improper description contents. Page cannot be generated.	Print again with the XPS data format which the printer supports.	To be skipped automatically
Analysis Error	XPS image data error	Auto	Enlarging image data fails.	Change the image data in the XPS file and print again.	To be skipped automatically
Analysis Error	XPS font data error	Auto	Analysis of font data fails.	Change the font data in the XPS file and print again.	To be skipped automatically
Analysis Error	XPS non-support image error	Auto	HD Photo image is included in the data.	When HD Photo image is included in the XPS file, convert to TIFF or JPEG format to embed the image.	To be skipped automatically
Analysis Error	XPS rendering error	Auto	Error occurs in the rendering system.	Turn OFF/ON the main power switch and send the job again. When this symptom still occurs, call the service center.	

Type	Message	Continuance of processing	Cause	Remedy	Recovery
Analysis Error	XPS memory full error	Auto	Memory space is not enough for rendering.	1.Press the online button to continue the processing. However, the output result of the page including the target area is not guaranteed. 2.When HD Photo Image or Progressive JPEG is used in the XPS data, convert to Baseline JPEG or TIFF format and print again.	To be skipped automatically
Analysis Error	XPS spool full error	Cannot be continued	Spool space is not enough for rendering.	Turn OFF/ON the main power switch and send the job again. When this symptom still occurs (when printing cannot be made), divide the data using the page range and print respectively.	Cancel the job.
Analysis Error	XPS print range error	Auto	Pages to be processed are not found in the specified print range.	Specify the correct page range.	Cancel the job.
Fatal Error	XPS initialization error	Cannot be continued	Initialization fails at start-up of printer or XPS processing.	Turn OFF/ON the main power switch and send the job again. When this symptom still occurs, call the service center.	
Analysis Error	XPS exception error	Cannot be continued	Undefined error occurs.	Turn OFF/ON the main power switch and send the job again. When this symptom still occurs, call the service center.	

T-4-3