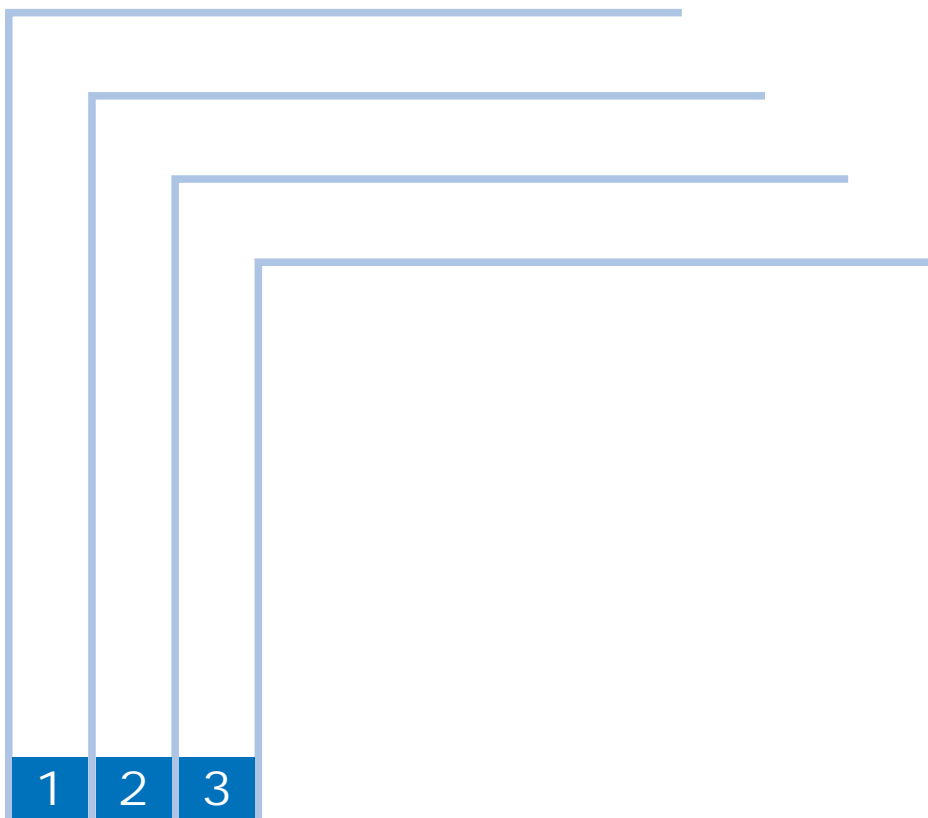


Advanced Box / Client imageRUNNER ADVANCE C2030/C2020 Series

Service Manual



Application

This manual has been issued by Canon Inc. for qualified persons to learn technical theory, installation, maintenance, and repair of products. This manual covers all localities where the products are sold. For this reason, there may be information in this manual that does not apply to your locality.

Corrections

This manual may contain technical inaccuracies or typographical errors due to improvements or changes in products. When changes occur in applicable products or in the contents of this manual, Canon will release technical information as the need arises. In the event of major changes in the contents of this manual over a long or short period, Canon will issue a new edition of this manual.

The following paragraph does not apply to any countries where such provisions are inconsistent with local law.

Trademarks

The product names and company names used in this manual are the registered trademarks of the individual companies.

Copyright

This manual is copyrighted with all rights reserved. Under the copyright laws, this manual may not be copied, reproduced or translated into another language, in whole or in part, without the written consent of Canon Inc.

(C) CANON INC. 2010

Caution

Use of this manual should be strictly supervised to avoid disclosure of confidential information.

Contents

Functional Overview

- Functional Overview-----1-2
- Outline of Network (Advanced Box/Space Client)----- 1-2
- Network----- 1-2
- Note ----- 1-2
- File format ----- 1-3
- Memory Media----- 1-4
- File Format ----- 1-4
- Note ----- 1-4
- Lineup----- 1-5
- USA ----- 1-5
- EU ----- 1-5
- ASIA----- 1-5
- AUS ----- 1-5
- CHINA ----- 1-6
- The differences from iR-ADV C5051 Series ----- 1-7
- COPY ----- 1-7
- PDL----- 1-7
- SEND ----- 1-7
- Memory Media----- 1-8
- Advanced Box/Space Client ----- 1-8
- Network ----- 1-8
- Security----- 1-8
- UI ----- 1-8
- Web Access ----- 1-9
- Others ----- 1-9

Specifications

- Specifications -----2-2
- Specifications regarding Advanced Box/ Space (Server machine) --- 2-2
- User Authentication (User Access Control for Adadvanced Box/Space) --- 2-2




- Specifications regarding energy-saving, sleep and auto-sleep ----- 2-3
- Exclusive control of documents in operation----- 2-4
- Specifications regarding SMB/WebDAV ----- 2-4
- Specifications when iW SAM function is enabled----- 2-4
- Specifications in Dept. ID management----- 2-5
- Specifications regarding link to Memory Media ----- 2-6

Installation/Settings

- Installation/Settings-----3-2
- Save to network (external connection setting)----- 3-2
- Settings for Server----- 3-2
- Open to Public----- 3-2
- SMB Authentication Settings----- 3-2
- Allow to Create Personal Space ----- 3-3
- Authentication Management ----- 3-3
- Disabling writing from external device/PC----- 3-4
- Settings for client----- 3-5
- Protocol settings ----- 3-5
- Network settings ----- 3-5



Explanation of Symbols

The following symbols are used throughout this Service Manual.

Symbols	Explanation
	Using it for general attention, warning, a notice of the danger that does not specify.
	Using the possibility of the electric shock for notice to be careful to.
	Mention about written item in the copier BASIC series to understand mention contents.

The following rules apply throughout this Service Manual:

1. Each chapter contains sections explaining the purpose of specific functions and the relationship between electrical and mechanical systems with reference to the timing of operation.

In the diagrams,  represents the path of mechanical drive; where a signal name accompanies the symbol, the arrow  indicates the direction of the electric signal. The expression "turn on the power" means flipping on the power switch, closing the front door, and closing the delivery unit door, which results in supplying the machine with power.

2. In the digital circuits, '1' is used to indicate that the voltage level of a given signal is "High", while '0' is used to indicate "Low". (The voltage value, however, differs from circuit to circuit.) In addition, the asterisk (*) as in "DRMD*" indicates that the DRMD signal goes on when '0'.

In practically all cases, the internal mechanisms of a microprocessor cannot be checked in the field. Therefore, the operations of the microprocessors used in the machines are not discussed: they are explained in terms of from sensors to the input of the DC controller PCB and from the output of the DC controller PCB to the loads.

The descriptions in this Service Manual are subject to change without notice for product improvement or other purposes, and major changes will be communicated in the form of Service Information bulletins.

All service persons are expected to have a good understanding of the contents of this Service Manual and all relevant Service Information bulletins and be able to identify and isolate faults in the machine.



Functional Overview

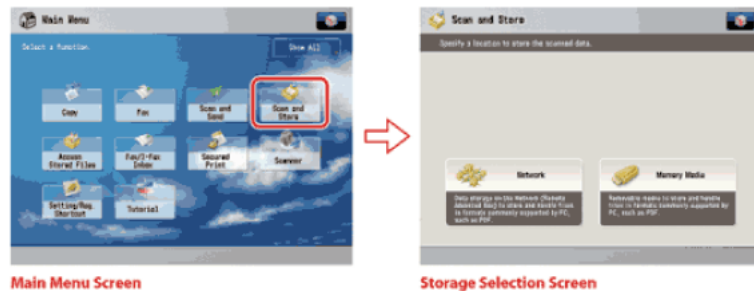
- Outline of Network
- Outline of link to Memory Media
- Configuration
- Differences from the iR-ADV C5051 Series

Functional Overview

Outline of Network (Advanced Box/Space Client)

The Advanced Box is an inner storage function with the iR device that was newly added from the iR-ADV C5051 series in addition to the User Box. With the iR-ADV C2030/C2025/C2020 series, the 2 types of storage areas are used and the user can scan and save the document as well as use the saved file.

- Network
- Memory Media



F-1-1

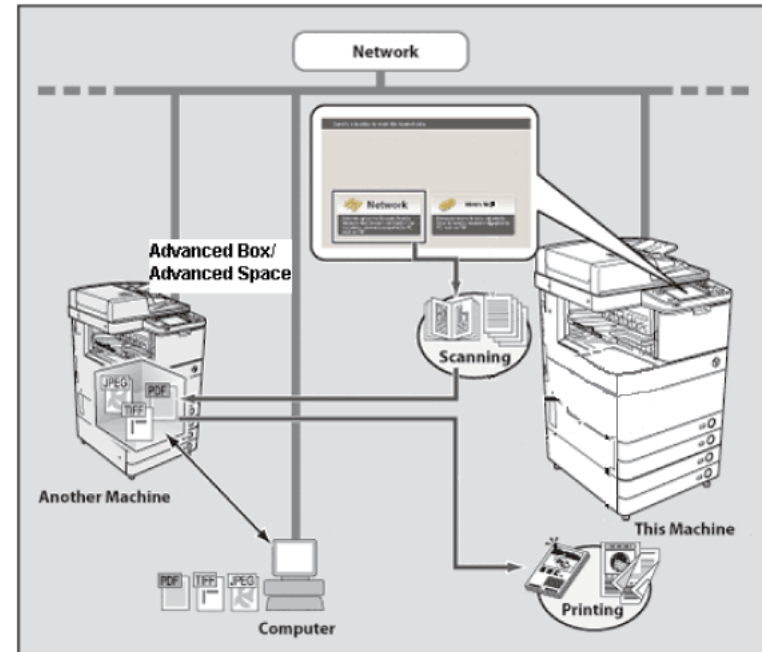
Network

The network indicates the HDD (Advanced Box) of the other imageRUNNER ADVANCE series on the network that is accessible from this product.

By selecting the Advanced Box of the other imageRUNNER ADVANCE series from [Network], the document retrieved from this product can be saved in the Advanced Box of the other imageRUNNER ADVANCE series and the file in the Advanced Box can be printed from this product.

The user also can see and print the data saved in the Advanced Box (Network) of the other imageRUNNER ADVANCE series.

At the Flash model, this network function (Advanced Box/Space Client) is available with the HDD or SEND option.






F-1-2

Note

- The HDD or SEND options can be used if available.
- Printing PDF documents is not possible because models without HDD do not support PDF Direct.
- Preview and XPS files are not supported.
- Mail Box is not available.
- Files cannot be stored in the iR-ADV C2030/C2020 Series.
They can only be saved in the HDD of the other imageRUNNER ADVANCE Series server machine.
- SMB or WebDAV "Open to Public" is required for the server Advanced Box.
- With the iR-ADV C2030/C2020 Series are only connected with SMB/WebDAV as clients

File format

Icons displaying file types handled by the network are as follows.

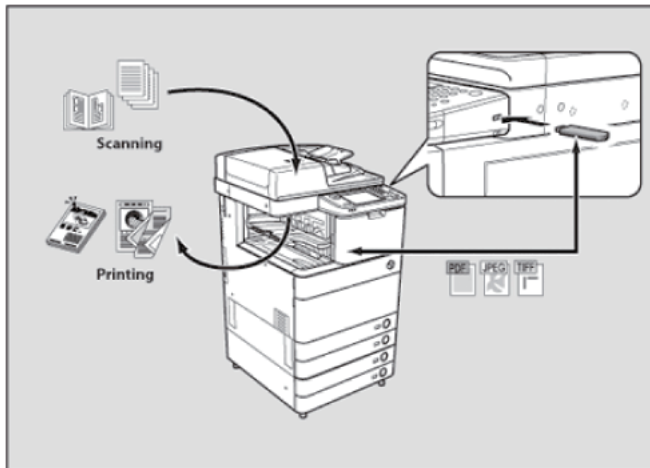
Icon	Types of Files
	PDF file
	JPEG file
	TIFF file

F-1-3

Memory Media

Memory Media is a storage location that can be used by connecting a USB memory to the USB port of this machine. The original read from this machine can be saved in the memory media in a file format that can be used by the computer (such as PDF) and the file saved in the memory media can be printed from this machine.




The SD card, Memory Stick, CF card and Microdrive can be used by installing the USB device port - C1 and the Multimedia Reader/Writer – A1.



F-1-4

File Format

Icons displaying file types handled by Memory Media are as follows.

Icon	Types of Files
	PDF file
	JPEG file
	TIFF file

F-1-5

*Printing PDF documents is not supported by models without HDD

Note

- Preview and XPS files are not supported.
- Printing PDF documents is not possible because models without HDD do not support PDF Direct.
- Only no security media are available.

- There are no capacity limit on memory media. But FAT32 file format makes the limit on files till 4GB.



USA

Functions	iR-ADV C2030	iR-ADV C2020
COPY	Standard	Standard
FAX	Option	Option
ADF	Standard	Standard
Scanner	Standard	Standard
HDD	Standard	Standard
Flash	4GB	4GB
RAM	1GB	1GB
Print	UFR II Standard	UFR II Standard
Direct Printing	Option	Option
SEND	Standard	Standard
Network	Standard Giga bit-Ether	Standard Giga bit-Ether

T-1-1

EU

Functions	iR-ADV C2030L	iR-ADV C2030I	iR-ADV C2020L	iR-ADV C2020I
COPY	Option	Option	Option	Option
FAX	Option	Option	Option	Option
ADF	Option	Option	Option	Option
Scanner	Option	Option	Option	Option
HDD	N/A	Standard	N/A	Standard
Flash	4GB	4GB	4GB	4GB
RAM	1GB	1GB	1GB	1GB
Print	UFR II Standard	UFR II Standard	UFR II Standard	UFR II Standard
Direct Printing	N/A	Option	N/A	Option
SEND	Option	Standard	Option	Standard
Network	Standard Giga bit-Ether	Standard Giga bit-Ether	Standard Giga bit-Ether	Standard Giga bit-Ether

T-1-2

ASIA

Functions	iR-ADV C2030H	iR-ADV C2025H	iR-ADV C2020	iR-ADV C2020H
COPY	Standard	Standard	Standard	Standard
FAX	Option	Option	Option	Option
ADF	Option	Option	Option	Option
Scanner	Standard	Standard	Standard	Standard
HDD	Standard	Standard	Option	Standard
Flash	4GB	4GB	4GB	4GB
RAM	1GB	1GB	1GB	1GB
Print	UFR II Standard	UFR II Standard	UFR II Standard	UFR II Standard
Direct Printing	Option	Option	Option (Required HDD)	Option
SEND	Standard	Standard	Option	Standard
Network	Standard Giga bit-Ether	Standard Giga bit-Ether	Standard Giga bit-Ether	Standard Giga bit-Ether

T-1-3

AUS

Functions	iR-ADV C2030	iR-ADV C2020
COPY	Standard	Standard
FAX	Option	Option
ADF	Standard	Standard
Scanner	Standard	Standard
HDD	Standard	Standard
Flash	4GB	4GB
RAM	1GB	1GB
Print	UFR II Standard	UFR II Standard
Direct Printing	Option	Option
SEND	Standard	Standard
Network	Standard Giga bit-Ether	Standard Giga bit-Ether

T-1-4

■ CHINA

Functions	iR-ADV C2030	iR-ADV C2025	iR-ADV C2020
COPY	Standard	Standard	Standard
FAX	Option	Option	Option
ADF	Option	Option	Option
Scanner	Standard	Standard	Standard
HDD	Standard	Standard	Option
Flash	4GB	4GB	4GB
RAM	1GB	1GB	1GB
Print	UFR II Standard	UFR II Standard	UFR II Standard
Direct Printing	Option	Option	Option (Required HDD)
SEND	Standard	Standard	Option
Network	Standard Giga bit-Ether	Standard Giga bit-Ether	Standard Giga bit-Ether

T-1-5

The differences from iR-ADV C5051 Series

The following shows the function differences between the flash memory model and the HDD model as well as the differences from the iR-ADV C5051 series.

COPY

Functions	Flash:4GB RAM:1GB	Flash:4GB RAM:1GB HDD:80GB	iR-ADV C5051	Remarks
The sort accumulation possibility number of sheets/A4	Almost 100 pages(600MB)	6000 pages		
Reserving Copy Jobs	Available(1Job)	Available(20Jobs)		
Store in Mail Box	N/A	N/A	Available	
Merge Job Blocks	N/A	N/A	Available	
Superimpose Image	N/A	N/A	Available	
Page Numbering, Watermark, Copy Set Numbering	Only CMYK No Trans-parent	Only CMYK No Trans-parent	Available	
Tab sheet	N/A	N/A	Available	Engine is not supported.
Punch	N/A	N/A	Available	
Color phase adjustment	N/A	N/A	Available	

T-1-6

PDL

Functions	Flash:4GB RAM:1GB	Flash:4GB RAM:1GB HDD:80GB	iR-ADV C5051	Remarks
UFR II	Available	Available	Available	
Imaging ("Image files" in the direct print from RUJ)	Available	Available	Available	
PCL	Available	Available	Available	
Emulation	Available	Available	Available	
XPS	N/A	Available	Available	
AdobePS/PDF	N/A	Available	Available	
Kyuanos	N/A	N/A	Available	
DeviceLinkProfile	N/A	N/A	Available	
Trapping	N/A	N/A	Available	
Secured Print	N/A	Available	Available	

T-1-7

SEND

Functions	Flash:4GB RAM:1GB	Flash:4GB RAM:1GB HDD:80GB	iR-ADV C5051	Remarks
TIFF/JPEG	Available	Available	Available	
PDF(Compact, Searchable, Scalable, Digital Signature, Encrypted)	Available (Searchable PDF/XPS is not available in Traditional Chinese/Simplified Chinese/Korean)	Available	Available	
Linearized PDF	N/A	Available	Available	
XPS	Available	Available	Available	
Auto Complete of address book	Available	Available	N/A	New Function of iR-ADV C2030/C2020/C2025
Remote FAX Server	N/A	N/A	Available	
Remote Address Book Server	N/A	N/A	Available	
Remote Address Book Client	Available	Available	Available	Cooperation with iR-ADV C5051/C9075 is possible.
Send To Box	N/A	N/A	Available	
OOXML	N/A	N/A	Available	
Red Pen Mode at Compact PDF.	N/A	N/A	Available	
Color sending of extra long	Available	Available	Available	
The number of transmission settings	1000 cases	1000 cases		Both reception of FAX/I-FAX
The number of Sequential Broadcast while using Remote Address Book.	256 cases	256 cases		
The number of Sequential Broadcast which need password each times while sending files.	256 cases	256 cases		
Maximum Reserving Jobs	120 jobs	120 jobs		

T-1-8

Memory Media

Functions	Flash:4GB RAM:1GB	Flash:4GB RAM:1GB HDD:80GB	iR-ADV C5051	Remarks
Scan To Memory	Available	Available	Available	
Memory To Print	Available	Available	Available	
Preview	N/A	N/A	N/A	
File Formats				
JPEG/TIFF	Scan:Available	Scan:Available	Scan:Available	
	Print:Available	Print:Available	Print:Available	
PDF	Scan:Available	Scan:Available	Scan:Available	
	Print:N/A	Print:Available	Print:Available	
XPS	N/A	N/A	N/A	
Move/Copy	N/A	N/A	N/A	

T-1-9

Advanced Box/Space Client

Functions	Flash:4GB RAM:1GB	Flash:4GB RAM:1GB HDD:80GB	iR-ADV C5051	Remarks
Scan To Remote Box	Available*	Available	Available	*SEND option is required in Flash model
Remote Box To Print	Available*	Available	Available	
Preview	N/A	N/A	N/A	
File Formats				
JPEG/TIFF	Scan:Available*	Scan:Available	Scan:Available	
	Print:Available*	Print:Available	Print:Available	
PDF	Scan:Available*	Scan:Available	Scan:Available	
	Print:N/A	Print:Available	Print:Available	
XPS	N/A	N/A	N/A	
Move/Copy	N/A	N/A	N/A	

T-1-10

Network

Functions	Flash:4GB RAM:1GB	Flash:4GB RAM:1GB HDD:80GB	iR-ADV C5051	Remarks
WebDAV server	N/A	N/A	Available	
WebDAV client	N/A	Available	Available	
SMB File server	N/A	N/A	Available	
SMB Print	N/A	Available	Available	

T-1-11

Security

Functions	Flash:4GB RAM:1GB	Flash:4GB RAM:1GB HDD:80GB	iR-ADV C5051	Remarks
JOB LOCK	Available	Available	Available	
TPM	Available	Available	Available	

T-1-12

UI

Functions	Flash:4GB RAM:1GB	Flash:4GB RAM:1GB HDD:80GB	iR-ADV C5051	Remarks	
The number of Quick Menu registration buttons	48	1608(same as iR-ADV C9075)			
Voice					
Voice Key Operation (Combining)	N/A	Available	Available		
Voice Operation (Recognition)	N/A	Available	Available		
Localized Voice Key Operation(Combining)	-	Japanese, English, French, Italian, German, Spanish	Japanese, English, French, Italian, German, Spanish		
Localized Voice Operation (Recognition)	-	Japanese, English, French, Italian, German, Spanish	Japanese, English, French, Italian, German, Spanish		
Correspondence Languages (LUI)	30 Languages	30 Languages	30 Languages		including Thai, Vietnamese
Correspondence Languages (RUI)	9 Languages	9 Languages	9 Languages		

T-1-13

Web Access

Functions	Flash:4GB RAM:1GB	Flash:4GB RAM:1GB HDD:80GB	iR-ADV C5051	Remarks
Browser classification	Service Browser	Full Browser(with limitation) Simple Browser Service Browser	Full BrowserSimple Browser Service Browser	
Printing Contents	N/A	N/A	Available	
Scheduled Print	N/A	N/A	Available	
Flash Display	N/A	N/A	Available	
Page Memo	N/A	N/A	Available	
Document Uploading	N/A	N/A	Available	
PDF Display	N/A	N/A	Available	
PDF Printing	N/A	N/A	Available	
The number of Favorites	5	20		
The number of Histories	N/A	100		
Registration of URL buttons to Top Menu	N/A	Available	Available	

T-1-14

Others

Functions	Flash:4GB RAM:1GB	Flash:4GB RAM:1GB HDD:80GB	iR-ADV C5051	Remarks
SAM	N/A	Available (Raster JPEG 600dpi)		
Remote Software Updating	Available	Available		
Encrypted Flash	N/A	N/A	N/A	The encryption of Flash memory is not supported. The log-related (address book) encryption gives non-support with this model, either.
Encrypted HDD	N/A	HDD Encrypt Kit-C3	HDD Encrypt Kit-C1	
Full Erase				
Flash	Available (1 time overwriting)	Available (1 time overwriting)	-	
HDD	-	Available (3 times overwriting)	Available (3 times overwriting)	

T-1-15

2

Specifications

- Specifications regarding Advanced Box(server machine)
- User Authentication
- Specifications regarding energy-saving and auto-sleep
- Exclusive control of documents in operation
- Specifications regarding SMB/WebDAV
- Specifications when iW SAM function is enabled
- Specifications in Dept. ID management
- Specifications regarding link to Memory Media

Specifications

Specifications regarding Advanced Box/ Space (Server machine)

- Up to 1,000 files (including folders) can be stored for a layer (level) in Advanced Box/ Advanced Space (same applies to the display and sorting).
- Up to 100 PDL jobs, which include the PDL jobs in which the other application has input, can be input at the same time. If the total jobs exceeds 100, the excess jobs are cancelled.
- If storing document after scanning, up to 32 saved jobs can be input at the same time.
- Approximately up to 100,000 documents (including folders) can be stored in Advanced Box/ Advanced Space of the host machine (100,000 is not the guaranteed number because some hidden files are used for internal process).
- HDD The upper limit of a file size that can be stored in Advanced Box/ Advanced Space is 2GB.
- The capacity of Advanced Box/ Advanced Space varies depending on the HDD capacity (see the next page).
- Direct Print needs to be enabled to print documents in Advanced Box/ Advanced Space.
- Respective options are necessary to generate (highly functional) PDF.
- Only the management function (settings, etc.) is available from the remote UI.
- If the machine shifts to the HDD protection mode(shut down sequence), the job is cancelled.
- Personal folders are created under “/users”
- In the case of SMB, access from a PC is available from \yen server \yen . In the case of access from the other iR device as Remote Advanced Box/ Advanced Space, however, the access to the folder just below \server\ causes an error.
- “/share” and “/users” folders cannot be changed because they are created as unchanged folders.
- “/users” folder exists even when the authentication operation is disabled.
- In the case of using an application other than Advanced Box/ Advanced Space while using the same storage, do not create “/share” or “/users” folders.
- “/folder” folder just below “/share” is the shared folder created as default (changing/deleting of the folder is available).
- The folders just below “/share” and “/users” are managed as “the top folder”, and cannot be created/deleted or the name of the folders cannot be changed from a PC connected through SMB/WebDAV.
- Any file cannot be placed just below “/share” or “/users” folders.
- To create a folder just below “/users”, use “Create Personal Space”.

- Creating a folder just below “/share” is available.

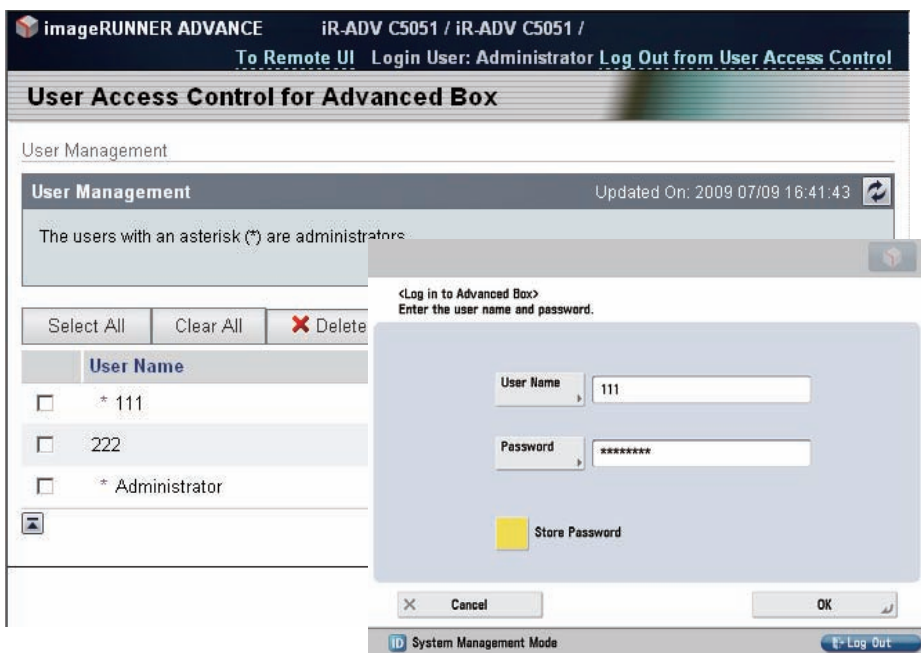
User Authentication (User Access Control for Advanced Box/Space)

This is an authentication function implemented from the iR-ADV C5051 Series.

This database is contained in the device but is separate from SSO-H (local).

ID and password for user authentication are registered in SRAM. Backup is automatically performed in HDD. When clearing with SRAM, such as service mode MN-CON clear, backup data is automatically restored from the HDD to the SRAM. However, the ID and password link setup with “Store Password” is not retained.

- User authentication function (UAC) is used for access to Advanced Box.
- UAC is a database different from Dept. ID management, SDL and SSO-H.
- User management is executed in RUI from a web browser.
- Using the Export/Import function enables backup of user information.
- Importing the exported user information to a different device enables information of registered users to be shared. (Export and use identical IDs when used for multiple users. Even if a password is identical to the ID registered in another host machine, the UAC will recognize it as a different user.)
- When performing SSO-H which is a MEAP login service, save a user ID/password certified by UAC and enable one-button certification (“Store Password” button).
- Registration description is as follows:
User Name, Password
User Type (Administrator/general user)
- Up to 5,000 users can be registered.



F-2-1

Default user name for administrator: Administrator

Default password: password

Caution:

A user name registered in User Management screen of Advanced Box/ Advanced Space is a unique and only name. After deleting the name and registering even the same text as a user name again, the newly registered name is recognized another user name other than the deleted one.

User name is required when opening user's personal space.

When user name has been deleted, and even when personal space of the user name remains in the iR main body, no one can access the personal space.

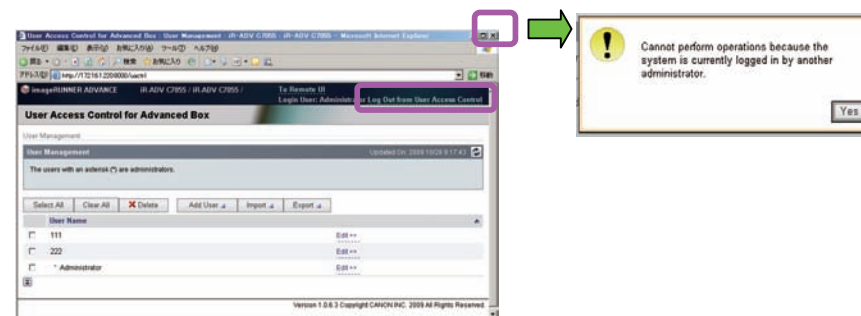
To restore the deleted user name, import the user name that has been exported in advance.

Points to Note:

When logging out of the User Management screen of User Access Control for Advanced Box, select "Log Out from User Access Control" to close the screen. Otherwise, the next login is

blocked for more than 30 minutes after the log-out.

When immediate login is required, turn OFF and then ON the main power supply to restart the main body.



F-2-2

Specifications regarding energy-saving, sleep and auto-sleep

- When "Open to Public" is enabled with SMB, the deep-sleep function is disabled.
- Advanced Box continues to operate even if the host machine shifts to energy-saving or sleep state.
- Advanced Box operations stop when the host machine shifts to the deep-sleep state.
- The energy-saving/sleep/deep-sleep state is shifted after receiving a response from the printer or the scanner.

Exclusive control of documents in operation

When handling documents, the machine does not execute logical copy just like Mail Box, but executes lock process of the document to prevent modification during handling process.

- To print documents
 - The operation is locked during data scanning.
 - The lock is released once the data scanning is complete even when the document has been printed (because printing is succeeded once the data has been scanned)
- To scan documents to store
 - The operation is locked during data writing

Specifications regarding SMB/WebDAV

- Number of clients to be connected at the same time:
 - SMB : 32 clients
 - WebDAV : No limit
- Connectable clients:
 - Windows 2000
 - Windows XP
 - Windows Vista
 - Windows 7
- When PS Print Server Unit is connected, Open to Public function with SMB is not available because the PS Print Server Unit works as SMB server.

To enable Open to Public function while the PS Print Server Unit is connected, use WebDAV to execute.

Specifications when iW SAM function is enabled

Following functions are disabled when imageWARE/iW Secure Audit Manager function is enabled:

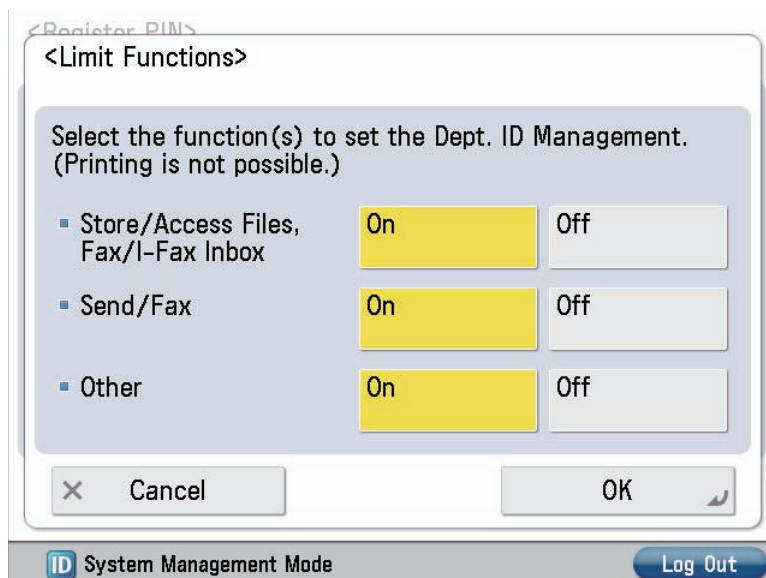
- Functions linked to the external Advanced Box/ Advanced Space.
- Executing management of the external connection settings.
- Open to Public.

Specifications in Dept. ID management

- To manage Advanced Box/ Advanced Space with Dept. ID, select ON for “Main Box” in “Limited Functions” setting.
Set “Store/Access Files, Fax/I-Fax Inbox” On, in the case of iR-ADV C2030/C2025/C2020 Series.

Path:

User Mode> Management Settings User Management > Department ID Management > ON > Register PIN > Limit Functions

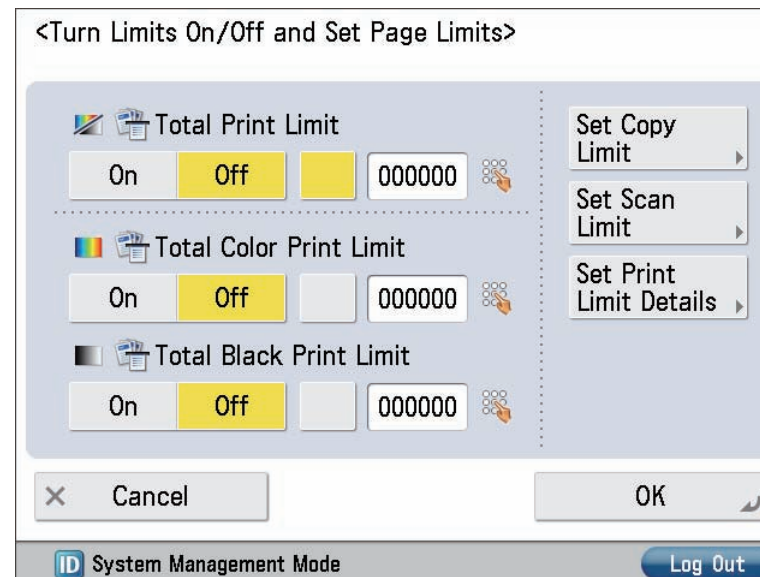


F-2-3

- When selecting the forced black/white mode, printing in black and white is available without entry of Dept. ID just like Mail Box (Dept. ID needs to be entered if the color mode (including ACS) is selected when making prints).

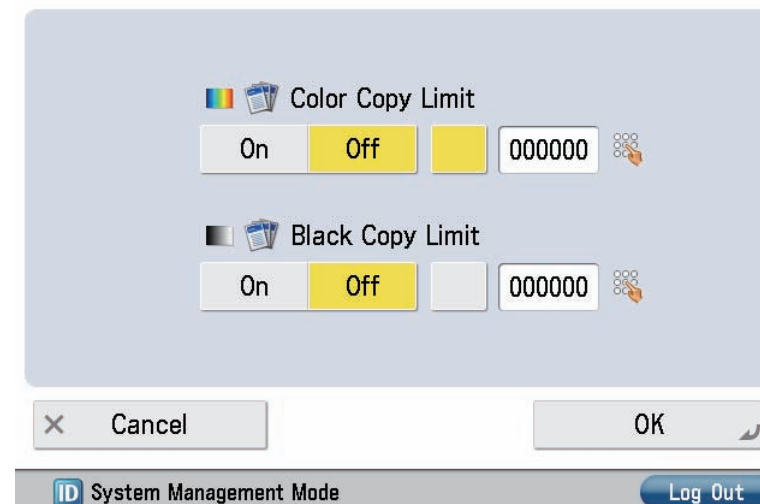
Path:

User Mode> Management Settings User Management > Department ID Management > ON > Register PIN > Register > Turn Limits On/Off and Set Page Limits



F-2-4

<Set Copy Limit>



F-2-5

<Set Scan Limit>

Color Scan Limit

On Off 000000

Black Scan Limit

On Off 000000

Cancel OK

System Management Mode Log Out

F-2-6

<Set Print Limit Details>

Color Print Limit

On Off 000000

Black Print Limit

On Off 000000

Cancel OK

System Management Mode Log Out

F-2-7

Specifications regarding link to Memory Media

- The number of slots for Memory Media differs depending on the model. If multiple partitions are specified in a Memory Media, it is recognized that multiple Memory Medias are attached. Up to 16 memory medias can be recognized.
- Memory Media supports FAT32 format only.
- Supported Memory Media
 - USB memory
 - SD card and SDHC card
 - CF card and Micro Drive
 - MemoryStick and MemoryStickPro
- The machine shift to the deep-sleep state while Memory Media is inserted since iR-ADV C2030/C2025/C2020 Series.
- Write-protect Memory Media
Memory media that supports write-protect function is not supported. Writing may not be successful although it seemed successful.
- Removing Memory Media
If the Memory Media is removed without performing termination process, the Memory Media (including data) is not guaranteed.



F-2-8

3

Installation/ Settings

- Saving to
Network(external
connection settings)
- Settings for server
- Settings for client

Installation/Settings

Save to network (external connection setting)

Users of the iR devices can register the connecting destinations (external repository) that is connected to the network (up to 20 destinations).

(Advanced Box/Advanced Space in other iR is object of the connected to.)

- Name of the external connecting destination: within 32 ASCII characters
- Name of network place: Within 128 characters (1-byte)/64 characters (2-byte).
 - It can cause an error if WebDAV server/Proxy server does not support the character codes other than ASCII.
 - Example:
 - SMB shared folder: \\server\share
 - WebDAV folder: http://webserver/share

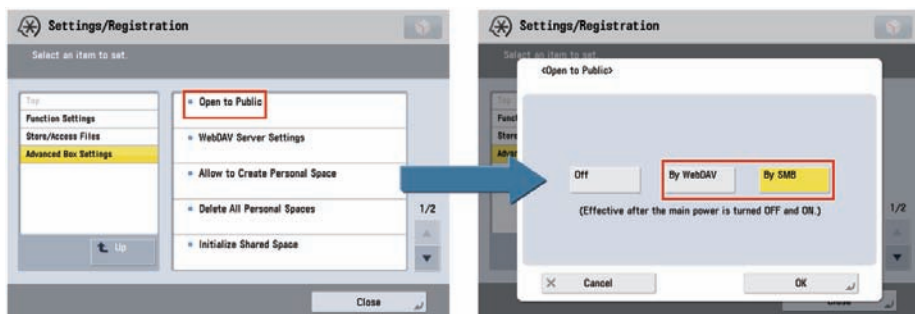
Settings for Server

Open to Public

- A function to use Advanced Box/ Advanced Space from the other PC or device on the network.
- Select either “By WebDAV” or “By SMB”.

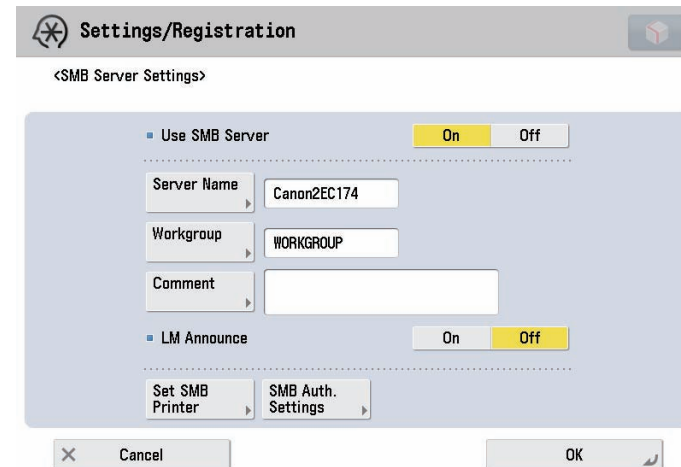
Path:

- Function Settings > Store/Access Files > Advanced Box Settings > Open to Public



F-3-1

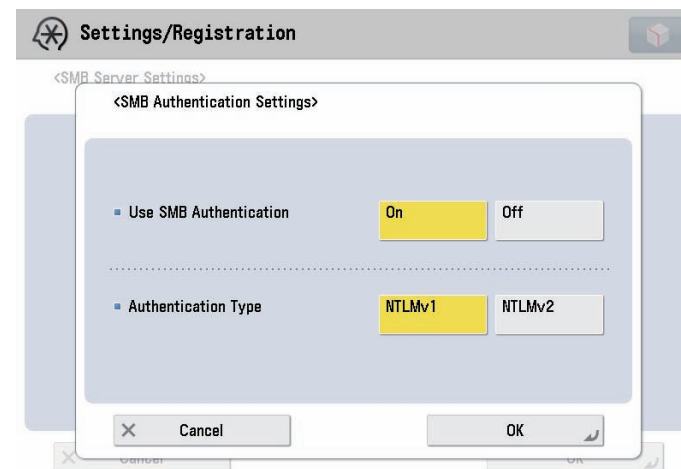
- Preferences > Network > SMB Server Settings > Use SMB Server > ON



F-3-2

SMB Authentication Settings

- Preferences > Network > SMB Server Settings > SMB Authentication Settings > Use SMB Authentication ON > AuthenticationType (NTLMv1/NTLMv2)



F-3-3

■ Allow to Create Personal Space

- To enable/disable creation of Personal Space.
- Select either “ON” or “OFF”.
- Selecting ON enables to create Personal Space.

Path:

User Mode > Function Settings > Store/Access Files > Advanced Box/ Advanced Space Settings > Allow to Create Personal Space



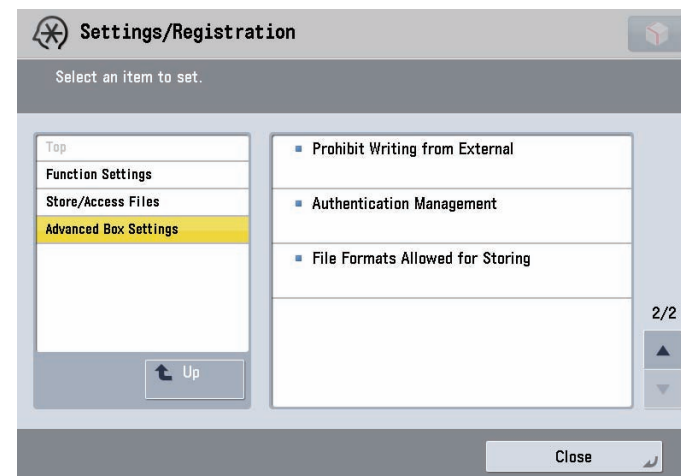
F-3-4

■ Authentication Management

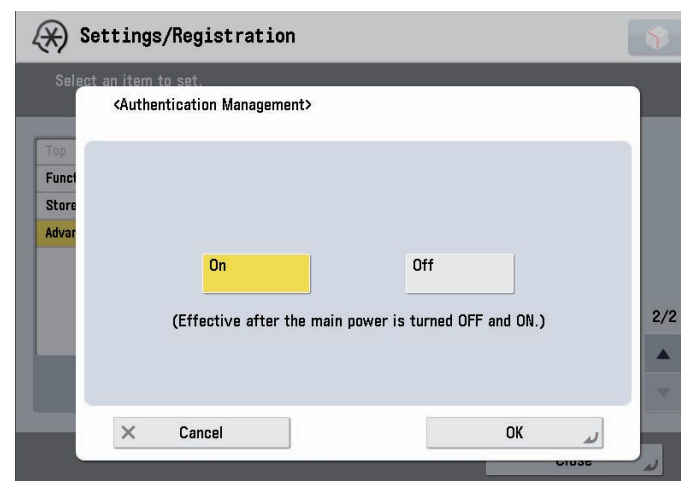
Execute authentication setting with Advanced Box/ Advanced Space. After that, you need User ID and password to access Advanced Box/ Advanced Space. It is necessary to do this setting for using Personal Space

Path:

- Function Settings > Store/Access Files > Advanced Box Settings > Authentication Management > ON



F-3-5



F-3-6

Get ready to make a personal space after Authentication management setting as follows.

1. Make User in UAC from RUI.
2. Access Advanced Box/ Advanced Space with User ID and password.

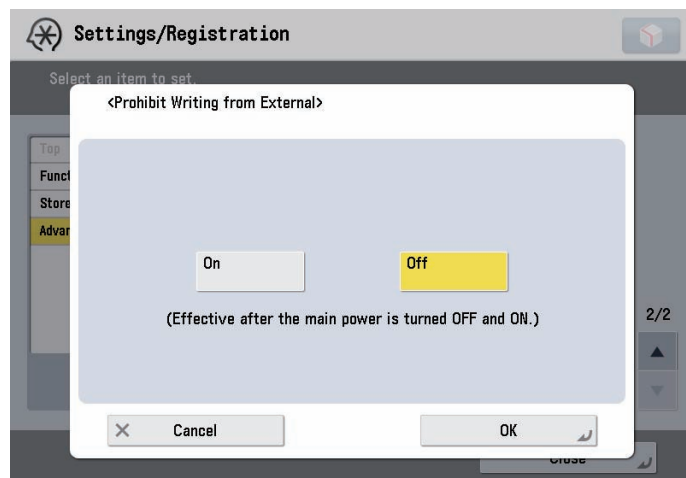
■ Disabling writing from external device/PC

- To disable writing to the files in Advanced Box/ Advanced Space from the other PC on the network.
- Under this setting, the user who access from outside only can do browse.

Path:

User Mode > Function Settings > Store/Access Files > Advanced Box/ Advanced Space

Settings > Prohibit Writing from External

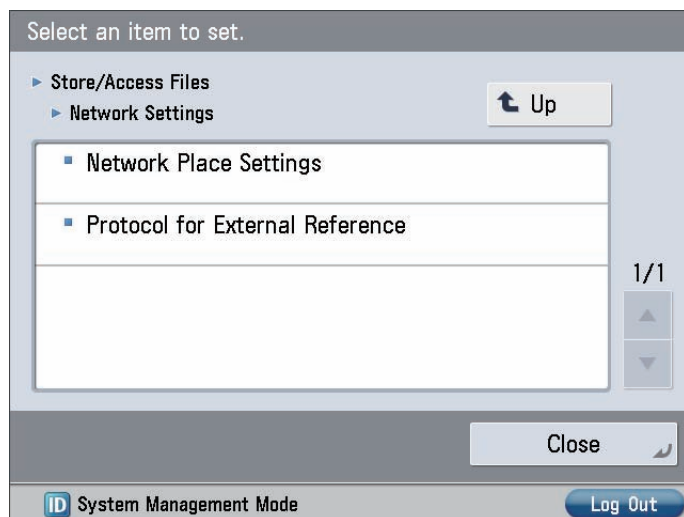


F-3-7

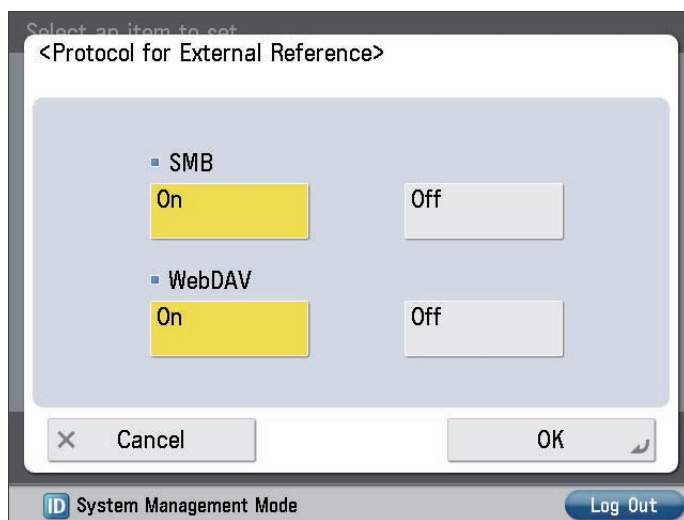
Settings for client

Protocol settings

Function Settings > Store/Access Files > Network Settings > Protocol for External Reference
> SMB/WebDAV > ON



F-3-8



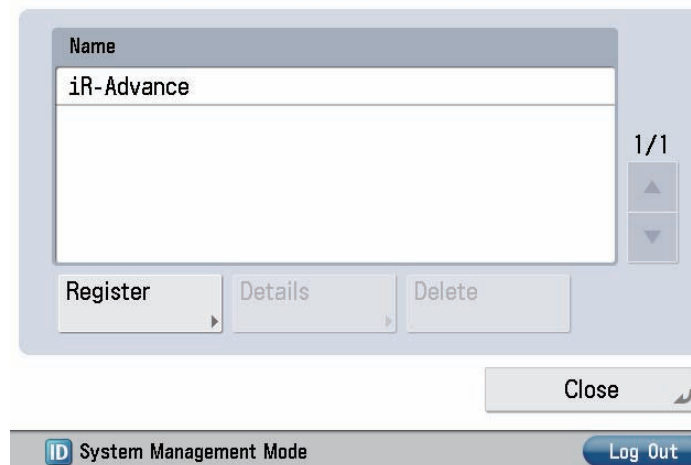
F-3-9

Network settings

Function Settings > Store/Access Files > Network Settings > Network Place Settings > Register

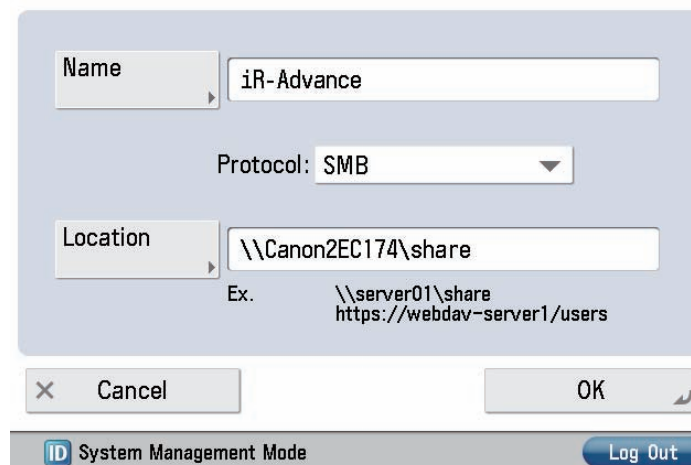
(The place specifies "share" or "users")

<Network Place Settings>



F-3-10

<Network Place Settings: Register>



F-3-11