

# **External 2/3 Hole Puncher-B1**

## **PARTS CATALOG**

**Canon**

**October 3, 2012  
Rev. 1**



## **PREFACE**

This Parts Catalog contains listings of parts used

Diagrams are provided with the listings to aid the service technician in identifying clearly, the item to be ordered.

Whenever ordering parts, consult this Parts Catalog for all of the information pertaining to each item. Be sure to include, in the Parts Request, the full item description, the item part number, and the quantity.

***COPYRIGHT (C) 1999 CANON INC.***

Use of this manual should be strictly supervised to avoid disclosure of confidential information.



# Contents

## NUMERICAL INDEX

External 2 Hole, 2/3 Hole, 2/4 Hole, 4 Hole Puncher-B1/B2(Numerical Index)  
1-1

## External 2 Hole, 2/3 Hole, 2/4 Hole, 4 Hole Puncher-B1/B2(Parts Catalog)

Q02	ATTACHMENT PARTS (B1) .....	2-1
Q03	ATTACHMENT PARTS (B2) .....	2-3
Q12	PUNCH MAIN BODY .....	2-5
Q34	PUNCH SLIDE ASSEMBLY .....	2-9
ZZA	MECHANICAL STANDARD PARTS (HOW TO USE) .....	2-11
ZZB	MECHANICAL STANDARD PARTS (SCREWS) .....	2-12
ZZC	MECHANICAL STANDARD PARTS (BOLTS) .....	2-19
ZZD	MECHANICAL STANDARD PARTS (NUTS) .....	2-20
ZZE	MECHANICAL STANDARD PARTS (RETAINING RINGS) .....	2-21



# NUMERICAL INDEX

## External 2 Hole, 2/3 Hole, 2/4 Hole, 4 Hole Puncher-B1/B2(Numerical Index)

PARTS NUMBER	FIGURE & KEY NO.	PARTS NUMBER	FIGURE & KEY NO.	PARTS NUMBER	FIGURE & KEY NO
4A3-5558-000	Q12 - 1	FH5-1043-000	Q12 - 31		
4A3-5559-000	Q12 - 2	FK2-4387-000	Q12 - 32		
4A3-5560-000	Q12 - 3	FK2-8628-000	Q34 - 7		
4A3-5561-000	Q12 - 4	FL2-0907-010	Q12 - 33		
4A3-5563-000	Q12 - 5	FL2-0909-000	Q12 - 34		
4A3-5564-000	Q12 - 6	FL2-0910-000	Q34 - 16		
4A3-5566-000	Q02 - 8	FL2-0915-000	Q02 - 5		
4A3-5567-000	Q02 - 1	FL2-0915-000	Q03 - 5		
4A3-5567-000	Q03 - 1	FL2-6385-000	Q34 - 17		
4A3-5568-000	Q12 - 7	FL3-6080-000	Q03 - 7		
4F3-1395-000	Q02 - 7	FM2-1441-000	Q34 - 8		
4F3-1396-000	Q12 - 8	FM4-1862-000	Q12 - 55		
4F3-1397-000	Q12 - 9	FM4-1866-000	Q12 - 35		
4G3-2742-000	Q34 - 1	FM4-1867-000	Q34 - 12		
4G3-2745-000	Q34 - 1	FM4-1868-000	Q12 - 36		
4G3-2747-000	Q34 - 1	FS5-1805-000	Q12 - 11		
4G3-2749-000	Q34 - 1	FS5-6528-000	Q34 - 13		
4G3-2758-000	Q12 - 10	FS5-9686-020	Q03 - 10		
4G3-2760-000	Q34 - 9	FS5-9687-020	Q34 - 14		
4S3-8318-000	Q02 - 2	FS6-8656-000	Q12 - 37		
4S3-8318-000	Q03 - 2	FS7-0836-000	Q12 - 38		
4S3-8319-000	Q12 - 28	FS7-0837-000	Q34 - 15		
4S3-9198-000	Q02 - 3	FS7-0838-000	Q34 - 10		
4S3-9198-000	Q03 - 3	FS7-2479-000	Q12 - 53		
4S3-9199-000	Q12 - 12	FS7-2483-020	Q12 - 40		
4S3-9200-000	Q34 - 2	FS7-2484-000	Q12 - 41		
4S3-9201-000	Q12 - 13	FU5-0601-000	Q12 - 42		
FB4-6333-000	Q34 - 3	FU5-2349-010	Q12 - 43		
FB4-6349-000	Q12 - 14	NPN	Q02 -		
FB5-5951-000	Q12 - 15	NPN	Q03 -		
FB5-5966-000	Q12 - 16	NPN	Q12 -		
FB5-5967-000	Q12 - 17	NPN	Q34 -		
FB5-5968-000	Q34 - 4	RS5-2596-000	Q12 - 44		
FB5-5969-000	Q34 - 5	WC4-5128-000	Q12 - 45		
FB5-6232-000	Q12 - 18	WG8-5696-000	Q12 - 46		
FB5-6775-000	Q34 - 6	WG8-5856-000	Q34 - 11		
FC0-4753-000	Q03 - 8	XA9-0732-010	Q12 - 47		
FC0-4755-000	Q03 - 9	XA9-1031-000	Q12 - 48		
FC5-4039-000	Q12 - 19	XA9-1500-010	Q02 - 6		
FC5-4040-000	Q12 - 20	XA9-1500-010	Q03 - 6		
FC5-4041-000	Q12 - 21	XA9-1500-010	Q12 - 49		
FC5-4042-000	Q12 - 22	XD1-1106-222	Q12 - 54		
FC5-4044-000	Q12 - 23	XD1-1107-239	Q12 - 51		
FC5-4045-000	Q12 - 24	XD3-2200-102	Q12 - 52		
FC5-4048-000	Q12 - 25	XF2-1618-860	Q12 - 50		
FC5-4101-000	Q12 - 26	XZ9-0560-000	Q12 - 39		
FC5-4118-000	Q12 - 27				
FC5-6169-000	Q02 - 4				
FC5-6169-000	Q03 - 4				
FF6-0658-000	Q12 - 29				
FF6-0666-000	Q12 - 30				
FF6-0667-000	Q12 - 30				





# External 2 Hole, 2/3 Hole, 2/4 Hole, 4 Hole Puncher-B1/B2(Parts Catalog)

External 2Hole Puncher B1

F28-0411-000 FHZ

External 2/3Hole Puncher B1

F28-0412-000 FEC

External 2/4Hole Puncher B1

F28-0414-000 FEU

External 4Hole Puncher B1

F28-0413-000 FED

External 2Hole Puncher B2

F28-0415-000 HZD

External 2/3Hole Puncher B2

F28-0416-000 HZE

External 2/4Hole Puncher B2

F28-0418-000 HZF

External 4Hole Puncher B2

**F28-0417-000 HZG**

# Contents

Q02	ATTACHMENT PARTS (B1).....	2-1
Q03	ATTACHMENT PARTS (B2).....	2-3
Q12	PUNCH MAIN BODY .....	2-5
Q34	PUNCH SLIDE ASSEMBLY .....	2-9
ZZA	MECHANICAL STANDARD PARTS (HOW TO USE) .....	2-11
ZZB	MECHANICAL STANDARD PARTS (SCREWS).....	2-12
ZZC	MECHANICAL STANDARD PARTS (BOLTS).....	2-19
ZZD	MECHANICAL STANDARD PARTS (NUTS).....	2-20
ZZE	MECHANICAL STANDARD PARTS (RETAINING RINGS) .....	2-21



# FIGURE Q02 ATTACHMENT PARTS (B1)

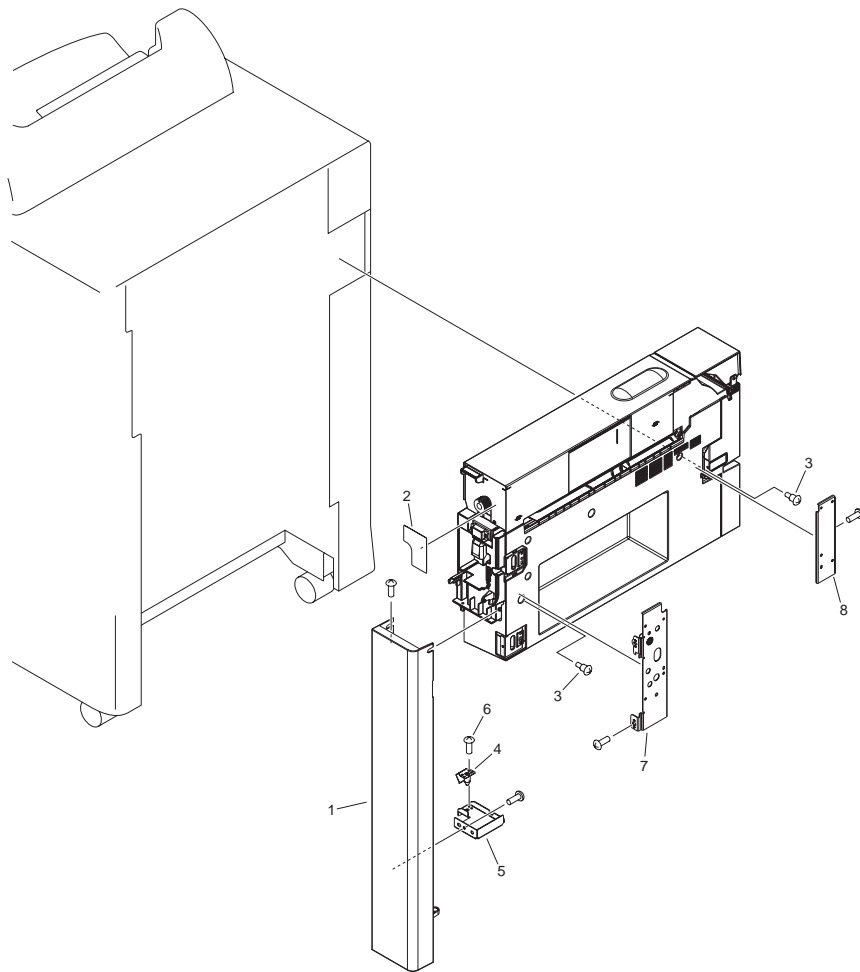


FIGURE & KEY NO.	PARTS NUMBER	RANK	Q'TY	DESCRIPTION	SERIAL NUMBER/REMARKS	SVC
Fig.Q02	NPN		RF	ATTACHMENT PARTS (B1)	B1	
1	4A3-5567-000		1	PANEL, FRONT LOWER		
2	4S3-8318-000		1	LABEL, PUNCH JAM CLEARING		
3	4S3-9198-000		2	SCREW, STEPPED, M4		
4	FC5-6169-000		1	SPRING, LEAF		
5	FL2-0915-000		1	PLATE, RETAINING COVER, FRONT		
6	XA9-1500-010		2	SCREW, S, M3X8		
7	4F3-1395-000		1	SUPPORT, LATCH, FRONT		
8	4A3-5566-000		1	SUPPORT, LATCH, REAR		

# FIGURE Q03 ATTACHMENT PARTS (B2)

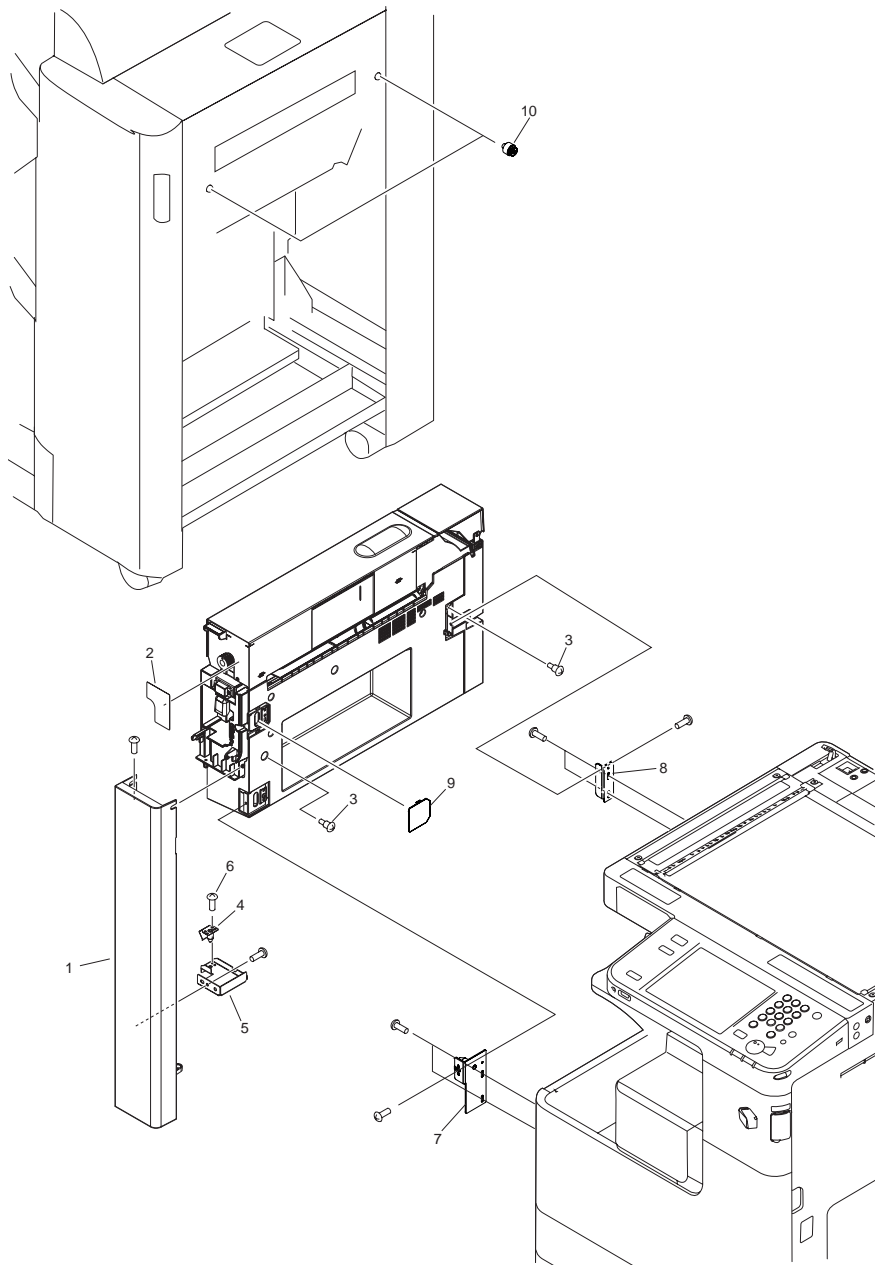
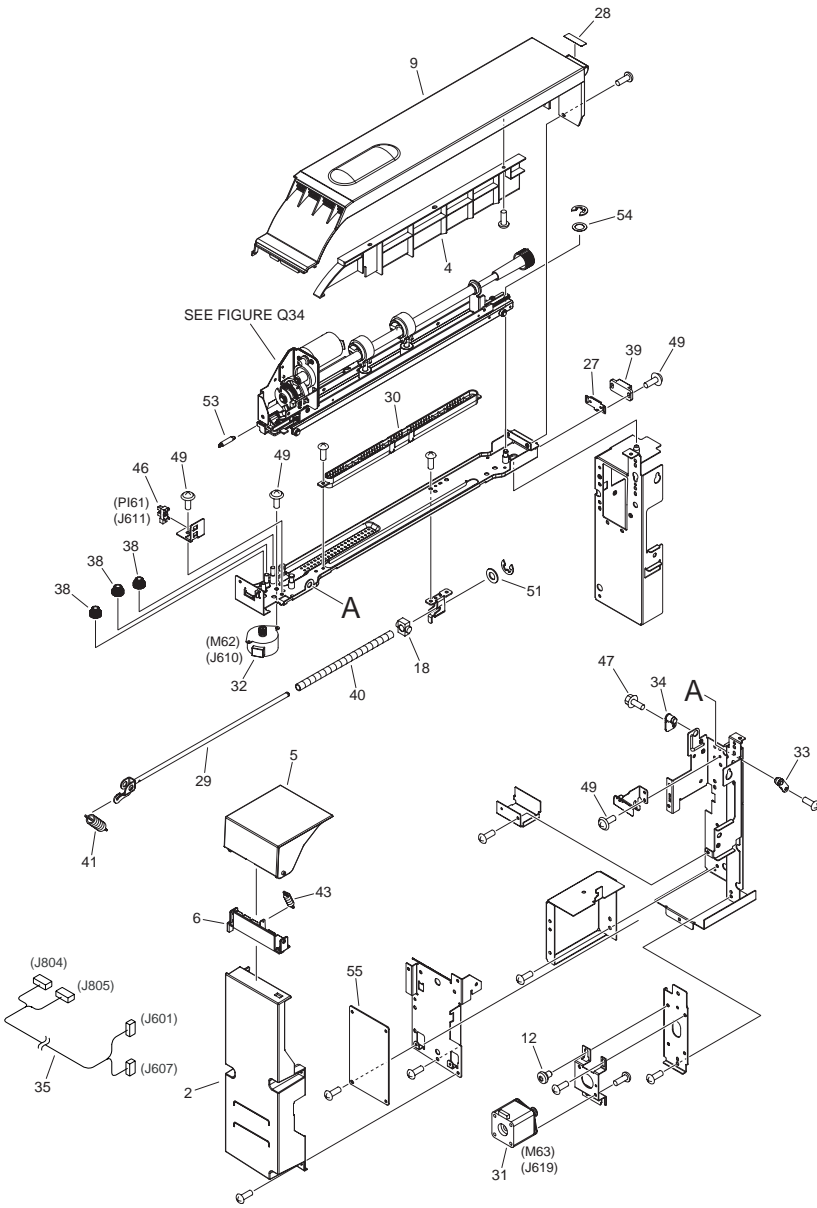


FIGURE & KEY NO.	PARTS NUMBER	R A N K	Q'TY	DESCRIPTION	SERIAL NUMBER/ REMARKS	S V C
Fig.Q03	NPN		RF	ATTACHMENT PARTS (B2)	B2	
1	4A3-5567-000		1	PANEL, FRONT LOWER		
2	4S3-8318-000		1	LABEL, PUNCH JAM CLEARING		
3	4S3-9198-000		2	SCREW, STEPPED, M4		
4	FC5-6169-000		1	SPRING, LEAF		
5	FL2-0915-000		1	PLATE, RETAINING COVER, FRONT		
6	XA9-1500-010		2	SCREW, S, M3X8		
7	FL3-6080-000		1	PIN, POSITIONING		
8	FC0-4753-000		1	PLATE, MOUNTING		
9	FC0-4755-000		1	COVER, BLANKING, FRONT		
10	FS5-9686-020		2	SCREW, STEPPED		



# FIGURE Q12 PUNCH MAIN BODY



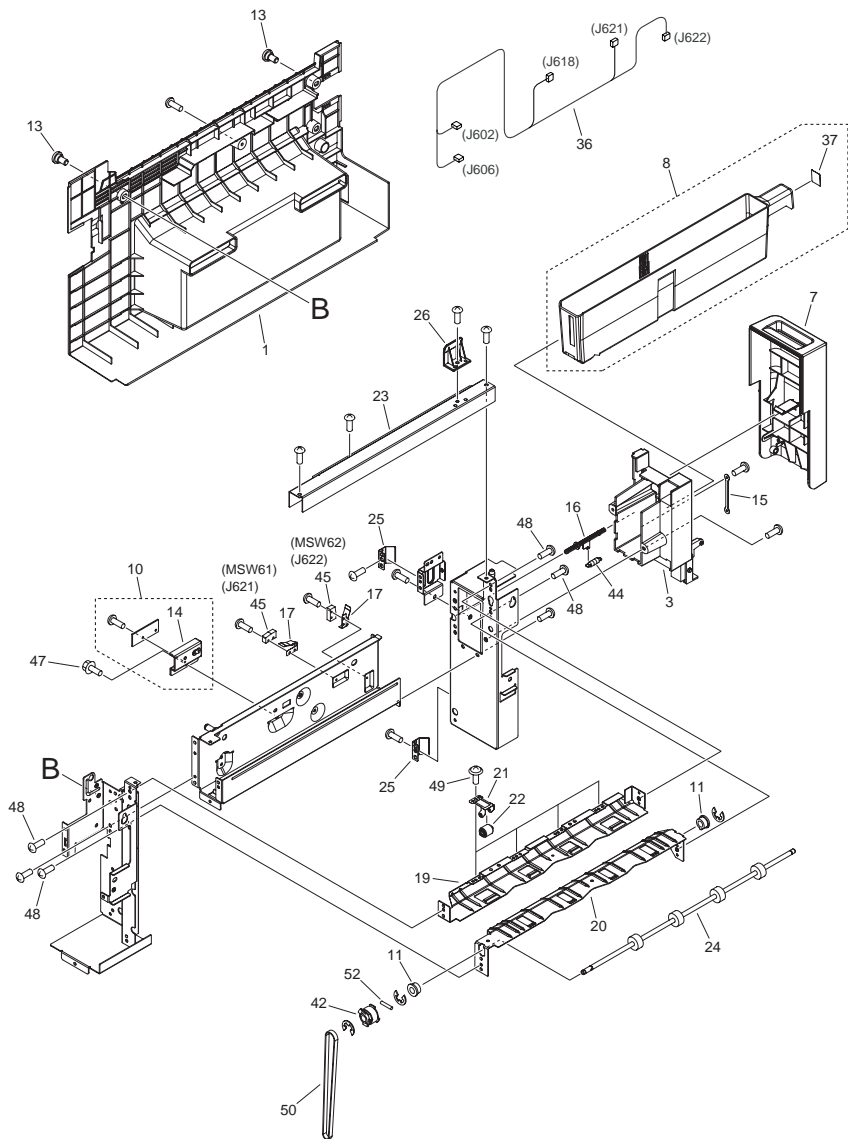


FIGURE & KEY NO.	PARTS NUMBER	R A N K	Q'TY	DESCRIPTION	SERIAL NUMBER/ REMARKS	S V C
Fig.Q12	NPN		RF	PUNCH MAIN BODY		
1	4A3-5558-000		1	PANEL, RIGHT		
2	4A3-5559-000		1	PANEL, PUNCH, REAR		
3	4A3-5560-000		1	COVER, FRONT, IN		
4	4A3-5561-000		1	PLATE, PANEL PARTITION, UPPER		
5	4A3-5563-000		1	PANEL, UPPER, SMALL		
6	4A3-5564-000		1	HINGE, PANEL, UPPER		
7	4A3-5568-000		1	PANEL, FRONT		
8	4F3-1396-000		1	BOX, DUST		
9	4F3-1397-000		1	PANEL, UPPER		
10	4G3-2758-000		1	PHOTO SENSOR UNIT, PAPER DUCT		
11	FS5-1805-000		2	BUSHING		
12	4S3-9199-000		2	SCREW, STEPPED, M4		
13	4S3-9201-000		3	SCREW, STEPPED, M4		
14	FB4-6349-000		1	HOLDER, SENSOR		
15	FB5-5951-000		1	TAPE, FRONT COVER		
16	FB5-5966-000		1	LEVER, FRONT DOOR SENSOR		
17	FB5-5967-000		2	SPRING, LEAF		
18	FB5-6232-000		1	BLOCK, SLIDER		
19	FC5-4039-000		1	GUIDE, PAPER FEED, UPPER		
20	FC5-4040-000		1	GUIDE, PAPER FEED, LOWER		
21	FC5-4041-000		4	SPRING, LEAF		
22	FC5-4042-000		4	ROLLER, PAPER FEED		
23	FC5-4044-000		1	COVER, PAPER FEEDER, UPPER		
24	FC5-4045-000		1	ROLLER, PUNCH PAPER FEEDER		
25	FC5-4048-000		2	SPRING, GROUNDING		
26	FC5-4101-000		1	GUIDE, LEAD		
27	FC5-4118-000		1	SPRING, GROUNDING		
28	4S3-8319-000		1	LABEL, PANEL KNOB UP		
29	FF6-0658-000		1	SHAFT, HINGE SUPPORT UNIT		
30	FF6-0666-000		1	DUCT, WASTE	2 Hole	
30	FF6-0667-000		1	DUCT, WASTE	2/3 Hole, 2/4 Hole, 4 Hole	

FIGURE & KEY NO.	PARTS NUMBER	R A N K	Q'TY	DESCRIPTION	SERIAL NUMBER/ REMARKS	S V C
31	FH5-1043-000		1	MOTOR, STEPPING, DC24V	M63	
32	FK2-4387-000		1	MOTOR, STEPPING, DC24V	M62	
33	FL2-0907-010		1	PLATE,PIVOT		
34	FL2-0909-000		1	PLATE, SUPPORT		
35	FM4-1866-000		1	CABLE, PUNCH CONNECT		
36	FM4-1868-000		1	CABLE, PUNCH SWITCH		
37	FS6-8656-000		1	SEAL		
38	FS7-0836-000		3	GEAR, 16T/25T		
39	XZ9-0560-000		1	CATCH, MAGNET		
40	FS7-2483-020		1	SPRING, COMPRESSION		
41	FS7-2484-000		1	SPRING, TENSION		
42	FU5-0601-000		1	PULLEY, 25T		
43	FU5-2349-010		1	SPRING,TENSION		
44	RS5-2596-000		1	SPRING, TENSION		
45	WC4-5128-000		2	MICROSWITCH	MSW61, MSW62	
46	WG8-5696-000		1	PHOTO INTERRUPTER, TLP1243	PI61	
47	XA9-0732-010		AR	SCREW,RS,M4		
48	XA9-1031-000		AR	SCREW, MACH. TRUSS HEAD, M4X6		
49	XA9-1500-010		8	SCREW, S, M3X8		
50	XF2-1618-860		1	BELT, TIMING, COGGED		
51	XD1-1107-239		1	WASHER,COP		
52	XD3-2200-102		1	PIN, PARALLEL		
53	FS7-2479-000		1	SPRING, TENSION		
54	XD1-1106-222		1	WASHER,COP		
55	FM4-1862-000		1	PUNCH CONTROLLER PCB ASSEMBLY		



FIGURE & KEY NO.	PARTS NUMBER	R A N K	Q'TY	DESCRIPTION	SERIAL NUMBER/ REMARKS	S V C
Fig.Q34	NPN		RF	PUNCH SLIDE ASSEMBLY		
1	4G3-2742-000		1	PUNCH ASSEMBLY	2 Hole	
1	4G3-2745-000		1	PUNCH ASSEMBLY	2/3 Hole	
1	4G3-2747-000		1	PUNCH ASSEMBLY	2/4 Hole	
1	4G3-2749-000		1	PUNCH ASSEMBLY	4 Hole	
2	4S3-9200-000		4	SCREW, STEPPED, M3		
3	FB4-6333-000		1	KNOB, PUNCHER		
4	FB5-5968-000		1	RACK, SLIDE		
5	FB5-5969-000		1	SUPPORT, SHAFT		
6	FB5-6775-000		1	PLATE, SENSOR FLAG		
7	FK2-8628-000		1	MOTOR, DC 24V	M61	
8	FM2-1441-000		1	PHOTO SENSOR UNIT		
9	4G3-2760-000		1	LED UNIT		
10	FS7-0838-000		1	GEAR, 19T/57T		
11	WG8-5856-000		2	PHOTOINTERRUPTER, TLP1255	PI62,PI63	
12	FM4-1867-000		1	CABLE, PUNCH UNIT		
13	FS5-6528-000		4	ROLLER		
14	FS5-9687-020		2	SCREW, STEPPED, M3		
15	FS7-0837-000		1	GEAR, 47T		
16	FL2-0910-000		1	GUIDE, SENSOR		
17	FL2-6385-000		1	HOLDER, SENSOR, LOWER		

# FIGURE ZZA

## MECHANICAL STANDARD PARTS (HOW TO USE)

### Mechanical standard parts

#### 機械標準部品

About a mechanical standard parts

A Mechanical standard parts is a mechanical part which not parts peculiar to a product. They are parts which are common to a Canon product and are used, such as a screw and a washer. The Fig No. and parts number of the mechanical standard parts are not listed in the product parts catalog. Refer to the parts catalog of mechanical standard parts when checking the parts number for screw or washer etc. and identify them by part shape or size.

機械標準部品とは

機械標準部品とは、製品特有の部品ではなく、ねじやワッシャなどキヤノン製品共通で使用されている機械部品（メカ部品）のことです。  
製品のパーツカタログには、機械標準部品のFig No.や部品番号は記載しておりません。  
ねじや、ワッシャ等の部品番号を調べるときは、機械標準部品のパーツカタログを参照し、部品の形状や大きさから判断し、使用している部品を調べてください。

Material and surface treatment of a mechanical standard parts

Material and surface treatment of mechanical standard parts are assigned commonly for each part. Refer to the Table 1 for the parts which material and surface treatment are assigned as numbers.

機械標準部品の材料および表面処理

機械標準部品の材料および表面処理については、各種部品共通で決められています。  
材料および表面処理が番号で決められている部品については、表1を参照してください。

Table 1 Material and Surface treatment  
表1 材料および表面処理

No. 番号	Material 材料	Surface treatment 表面処理	Color 色
1	Stainless steel ステンレス	Stainless steel black coloring (BC4) ステンレス黒着色(BC4)	Black 黒
2		not to be given なし	White 白
3	Brass 黄銅	Regular nickel plating (NL) 普通ニッケルメッキ(NL)	White 白
4		Black nickel plating (BN) 黒色ニッケルメッキ(BN)	Black 黒
5	Steel 鋼	White zinc trivalent chromate treating (ZC3) 白色亜鉛3価クロメート(ZC3)	White 白
6		Regular nickel chromium plating (NC) 普通ニッケルクロムメッキ(NC)	White 白
7		Regular nickel plating (NL) 普通ニッケルメッキ(NL)	White 白
8		Iron and steel phosphating (P1) 鉄鋼磷酸塩処理(P1)	Black 黒
9		Black zinc trivalent chromate treating (BZ3) 黒色亜鉛3価クロメート(BZ3)	Black 黒

# FIGURE ZZB MECHANICAL STANDARD PARTS (SCREWS)

## 1. Screws ねじ

How to read Parts Numbers  
部品番号の見方

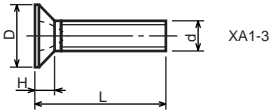
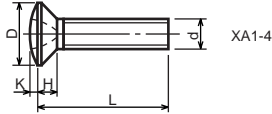
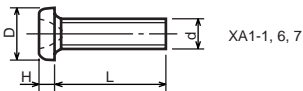
Screws  
ねじ

**XB1-2400-609**

Type No.  
類別番号  
Normal designation (d)  
ねじの呼び(d)  
Length (L)  
ねじの長さ(L)  
Material and Surface treatment  
材料および表面処理

XB1-2 expresses Binding head machine screw.  
XB1-2は、バインドねじを表す  
40 expresses M4.0.  
40は、M4.0を表す  
0-60 expresses a length of 6.0mm.  
0-60は、6.0mmの長さを表す  
9 expresses Steel (Black zinc trivalent chromate treating) from Table 1.  
9は、表1より鋼(黒色亜鉛3価クロメート)を表す

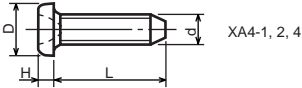
### 1-1. Cross Recessed Head Screws for Precision Equipments 精密機器用十字穴付き小ねじ



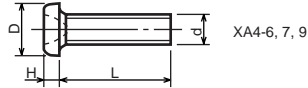
Type No. 類別番号	Type 類別	Head size (mm) 頭部寸法 (mm)							
		M1.4	M1.6	M1.7	M2	M2.5	M2.6		
XA1-1	Pan head Class 1 なべ1種	D	XA1-1	2	2.4	2.5	3	3.8	4
		H	XA1-1	0.5	0.55	0.5	0.6	0.9	0.8
XA1-3	Countersunk head Class 1 さら1種	D	XA1-3	2	2.4	2.5	3	3.8	4
		H	XA1-3	0.48	0.55	0.58	0.73	0.85	0.93
XA1-4	Oval countersunk head Class 1 丸さら1種	D	XA1-4	2	2.4	2.5	3	3.8	4
		H + K	XA1-4	0.68	0.8	0.88	1	1.25	1.3
XA1-6	Pan head Class 3 なべ3種	D	XA1-6	2.5	2.8	3	3.5	4.3	4.5
		H	XA1-6	0.8	0.85	0.9	1	1.3	1.2
XA1-7	Pan head Class 2 なべ2種	D	XA1-7	2.5	2.8	3	3.5	4.3	4.5
		H	XA1-7	0.5	0.55	0.5	0.6	0.9	0.8



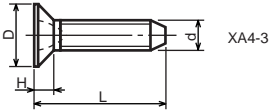
1-2. Precision Tapping Screws  
精密用タッピンねじ



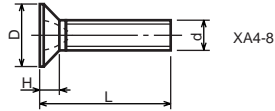
XA4-1, 2, 4



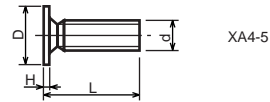
XA4-6, 7, 9



XA4-3



XA4-8



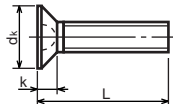
XA4-5

Type No. 類別番号	Type 類別	Head size (mm) 頭部寸法 (mm)						
		M1.4	M1.6	M1.7	M2	M2.5	M2.6	
XA4-1	With tapered end pan head Class 1 絞りなべ1種	D XA4-1	2	2.4	2.5	3	3.8	4
		H XA4-1	0.5	0.55	0.5	0.6	0.9	0.8
XA4-2	With tapered end pan head Class 3 絞りなべ3種	D XA4-2	2.5	2.8	3	3.5	4.3	4.5
		H XA4-2	0.8	0.85	0.9	1	1.3	1.2
XA4-3	With tapered end countersunk head 絞り-さら	D XA4-3	2	2.4	2.5	3	3.8	4
		H XA4-3	0.48	0.55	0.58	0.73	0.85	0.93
XA4-4	With tapered end pan head Class 2 絞りなべ2種	D XA4-4	2.5	2.8	3	3.5	4.3	4.5
		H XA4-4	0.5	0.55	0.5	0.6	0.9	0.8
XA4-5	With parallel end ultra thin head ストレート-超薄頭	D XA4-5	2.5	2.8	3	-	-	-
		H XA4-5	0.2	0.2	0.2	-	-	-
XA4-6	With parallel end pan head Class 1 ストレートなべ1種	D XA4-6	2	2.4	2.5	3	3.8	4
		H XA4-6	0.5	0.55	0.5	0.6	0.9	0.8
XA4-7	With parallel end pan head Class 3 ストレートなべ3種	D XA4-7	2.5	2.8	3	3.5	4.3	4.5
		H XA4-7	0.8	0.85	0.9	1	1.3	1.2
XA4-8	With parallel end countersunk head ストレート-さら	D XA4-8	2	2.4	2.5	3	3.8	4
		H XA4-8	0.48	0.55	0.58	0.73	0.85	0.93
XA4-9	With parallel end pan head Class 2 ストレートなべ2種	D XA4-9	2.5	2.8	3	3.5	4.3	4.5
		H XA4-9	0.5	0.55	0.5	0.6	0.9	0.8

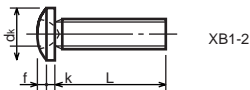
1-3. Cross Recessed Head Screws  
 一般用十字穴付き小ねじ



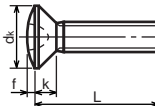
XB1-1



XB1-3



XB1-2

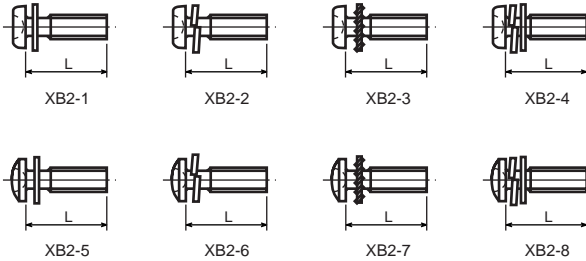


XB1-4

Type No. 類別番号	Type 類別
XB1-1	Pan head なべ
XB1-2	Binding head バインド
XB1-3	Countersunk head さら
XB1-4	Oval countersunk head 丸さら

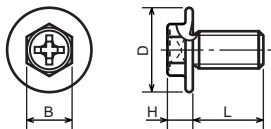
		Head size (mm) 頭部寸法 (mm)					
		M2	M2.5	M2.6	M3	M4	M5
dk	XB1-1	3.5	4.5	4.5	5.5	7	9
k	XB1-1	1.3	1.7	1.7	2	2.6	3.3
dk	XB1-2	4.3	5.3	5.5	6.3	8.3	10.3
k+f	XB1-2	1.2	1.5	1.6	1.9	2.5	3.1
dk	XB1-3	4	5	-	6	8	10
k	XB1-3	1.2	1.45	-	1.75	2.3	2.8
dk	XB1-4	4	5	-	6	8	10
k+f	XB1-4	1.6	2	-	2.45	3.2	4
Screw part length ねじ部長さ b		8	12	12	12	16	20

1-4. Cross Recessed Head Screws with Captive Washer  
座金組込み十字穴付き小ねじ



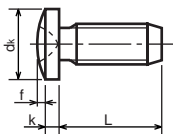
Type No. 類別番号	Type 類別
XB2-1	Pan head + Plain washer (circular bright) なべねじ+平座金
XB2-2	Pan head + Spring washer なべねじ+ばね座金
XB2-3	Pan head + Toothed lock washer なべねじ+歯付座金
XB2-4	Pan head + Spring washer and plain washer (circular bright) なべねじ+(ばね+平)座金
XB2-5	Binding head + Plain washer (circular bright) バインドねじ+平座金
XB2-6	Binding head + Spring washer バインドねじ+ばね座金
XB2-7	Binding head + Toothed lock washer バインドねじ+歯付座金
XB2-8	Binding head + Spring washer and plain washer (circular bright) バインドねじ+(ばね+平)座金

**1-5. Hexagon Head Tapping Screws for Metallic Materials**  
 金属用六角タッピンねじ



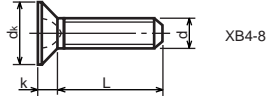
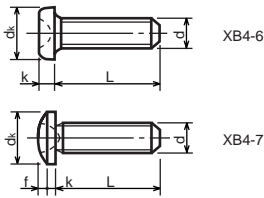
Type No. 類別番号	Type 類別	Head size (mm) 頭部寸法 (mm)	
		M3	M4
XB3-6	For metallic materials 金属用タッピン	D	8 10
		B	5.5 5.5
XB3-7	For metallic materials with clawed 金属用タッピン-つめ付き	H XB3-6	3.1 3.1
		H XB3-7	3.2 3.2

**1-6. Special Tapping Screws**  
 特殊タッピンねじ



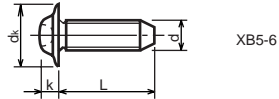
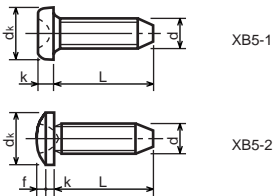
Type No. 類別番号	Type 類別	Head size (mm) 頭部寸法 (mm)	
		M3	M4
XB4-5	Binding head バインド	dk	6.3 8.3
		k	1.3 1.7
		k+f	1.9 2.5

1-7. General Head Tapping Screws  
一般用タッピンねじ



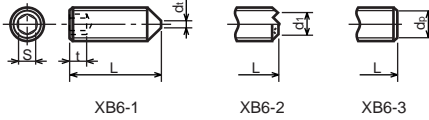
Type No. 類別番号	Type 類別	Head size (mm) 頭部寸法 (mm)						
		M2	M2.5	M2.6	M3	M4	M5	
XB4-6	Pan head なべ	$d_k$ XB4-6	3.5	4.5	4.5	5.5	7	9
		$k$ XB4-6	1.3	1.7	1.7	2	2.6	3.3
XB4-7	Binding head バインド	$d_k$ XB4-7	4.3	5.3	5.5	6.3	8.3	10.3
		$k+f$ XB4-7	1.2	1.5	1.6	1.9	2.5	3.1
XB4-8	Countersunk head さら	$d_k$ XB4-8	4	5	5.2	6	8	10
		$k$ XB4-8	1.2	1.45	1.5	1.75	2.3	2.8

1-8. Tapping Screws for Metallic Materials  
金属用タッピンねじ



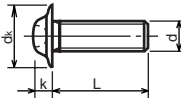
Type No. 類別番号	Type 類別	Head size (mm) 頭部寸法 (mm)					
		M2.5	M2.6	M3	M4	M5	
XB5-1	Pan head なべ	$d_k$ XB5-1	4.5	4.5	5.5	7	9
		$k$ XB5-1	1.7	1.7	2	2.6	3.3
XB5-2	Binding head バインド	$d_k$ XB5-2	5.5	5.5	6.3	8.3	10.3
		$k+f$ XB5-2	1.6	1.6	1.9	2.5	3.1
XB5-6	Flanged pan head つば付きなべ	$d_k$ XB5-6	6.5	6.5	8	10	12
		$k$ XB5-6	2.1	2.1	1.75	3.2	4

**1-9. Hexagon Socket Set Screws**  
六角穴付止めねじ



Type No. 類別番号	Type 類別	Head size (mm) 頭部寸法 (mm)							
		M1.6 M1.7	M2	M2.5 M2.6	M3	M5	M5	M6	
XB6-1	Cone point とがり先	S	0.7	0.9	1.3	1.5	2	2.5	3
		t	1.5	1.7	2	2	2.5	3	3.5
		$d_{t \max}$ XB6-1	0.4	0.5	0.65	0.75	1	1.25	1.5
		$d_{l \max}$ XB6-2	-	1.2	1.5	1.7	2.2	2.8	3.3
		$d_{l \min}$ XB6-2	-	1	1.2	1.4	1.9	2.4	2.9
		$d_{p \max}$ XB6-3	0.8	1	1.5	2	2.5	3.5	4
		$d_{p \min}$ XB6-3	0.55	0.75	1.25	1.75	2.25	3.2	3.7

**1-10. Flanged Pan Head Machine Screws**  
つば付きなべ小ねじ



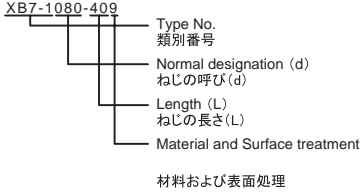
Type No. 類別番号	Type 類別	Head size (mm) 頭部寸法 (mm)					
		M2	M2.5 M2.6	M3	M5	M5	
XB6-7	Flanged pan head つば付きなべ	$d_k$	5	6.5	8	10	12
		k	1.7	2.1	2.5	3.2	4

# FIGURE ZZC MECHANICAL STANDARD PARTS (BOLTS)

## 2. Bolts (Socket head cap screw) ボルト

How to read Parts Numbers  
部品番号の見方

Bolt (Socket head cap screw)  
ボルト



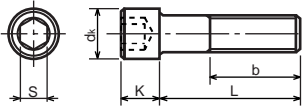
XB7-1 expresses Hexagon socket head cap screws.  
XB7-1は、六角穴付きボルトを表す

080 expresses M8.0.  
080は、M8.0を表す

40 expresses a length of 40mm.  
40は、40mmの長さを表す

9 expresses Steel (Black zinc trivalent chromate  
treating) from Table 1.  
9は、表1より鋼(黒色亜鉛3価クロメート)を表す

### 2-1. Hexagon socket head cap screws 六角穴付きボルト



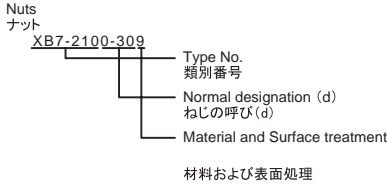
Type No. 類別番号	Type 類別
XB7-1	Hexagon socket head cap screws 六角穴付きボルト

	Head size (mm) 頭部寸法 (mm)						
	M3	M4	M5	M6	M8	M10	M12
S	2.5	3	4	5	6	8	10
$d_k$	5.5	7	8.5	10	13	16	18
K	3	4	5	6	8	10	12
Screw part length ねじ部長さ $b_{max}$	18	20	22	24	28	32	36

# FIGURE ZZD MECHANICAL STANDARD PARTS (NUTS)

## 3. Nuts ナット

How to read Parts Numbers  
部品番号の見方



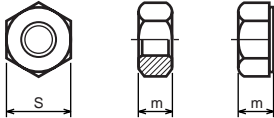
XB7-210 expresses Hexagon nut class 1.  
XB7-210は、六角ナット1種を表す

0-30 expresses M3.0.  
0-30は、M3.0を表す

9 expresses Steel (Black zinc trivalent chromate  
treating) from Table 1.

9は、表1より鋼(黒色亜鉛3価クロメート)を表す

### 3-1. Hexagon Nuts and Hexagon Thin Nuts 六角ナット



Type No. 類別番号	Type 類別
XB7-210	Hexagon nut Class 1 六角ナット-1種
XB7-220	Hexagon nut Class 3 六角ナット-3種
XB7-230	Hexagon nut Style 1 double chamfered 六角ナット-スタイル1-両面とり
XB7-231	Hexagon nut Style 1 washer faced 六角ナット-スタイル1-座付き
XB7-240	Hexagon nut Style 2 double chamfered 六角ナット-スタイル2-両面とり
XB7-241	Hexagon nut Style 2 washer faced 六角ナット-スタイル2-座付き
XB7-250	Hexagon nut 六角ナット
XB7-260	Hexagon thin nut double chamfered 六角低ナット-両面とり
XB7-270	Hexagon thin nut not chamfered 六角低ナット-面とり無し

	Head size (mm) 頭部寸法 (mm)						
	M2	M2.5	M3	M4	M5	M6	M8
S	4	5	5.5	7	8	10	13
m XB7-210	1.6	2	2.4	3.2	4	5	6.5
m XB7-220	1.2	1.6	1.8	2.4	3.2	3.6	5
m XB7-230, 231	1.6	2	2.4	3.2	4.7	5.2	6.8
m XB7-240, 241	-	-	-	-	5.1	5.7	7.5
m XB7-250	-	-	-	-	5.6	6.1	7.9
m XB7-260	1.2	1.6	1.8	2.2	2.7	3.2	4
m XB7-270	1.2	1.6	1.8	2.2	2.7	3.2	4

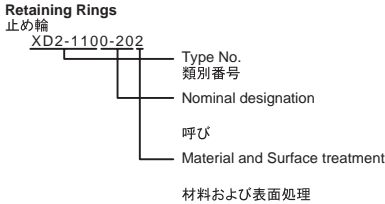


# FIGURE ZZE MECHANICAL STANDARD PARTS (RETAINING RINGS)

## 5. Retaining Rings

止め輪

How to read Parts Numbers  
部品番号の見方



XD2-110 expresses retaining ring-E type (Type1).  
XD2-110は、E形止め輪(1種)を表す

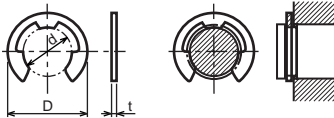
0-20 expresses a 020 of nominal designation.  
(See Table 5)

0-20は、呼び020を表す(表5参照)

2 expresses Stainless steel (Surface treatment is not to be given) from Table 1.  
2は、表1よりステンレス(表面処理なし)を表す

### 5-1. Retaining Rings - E type

E形止め輪

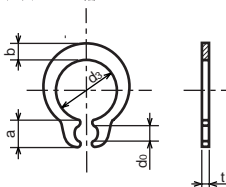


Type No. 類別番号	Type 類別
XD2-110	Retaining ring - E type (Type 1) E形止め輪(1種)
XD2-120	Retaining ring - E type (Type 2) E形止め輪(2種)

Table 5 表5

Type 種類	Nominal designation 呼び	d (mm)	D (mm)	t (mm)
Type 1 1種	007	0.65	2	0.2
	010	0.95	2.8	0.2
	013	1.25	3.3	0.3
	017	1.65	4.2	0.4
	020	1.95	4.6	0.5
	024	2.35	6	0.6
	028	2.74	6.5	0.6
	032	3.14	7.2	0.6
	037	3.64	8	0.7
	040	3.93	10	0.7
	042	4.13	10	0.7
	050	4.93	11	0.7
	058	5.73	12	0.7
	060	5.93	12.7	0.9
	064	6.32	13.5	0.9
	074	7.31	15	0.9
080	7.91	16.5	1	
Type 2 2種	008	0.8	2	0.2
	012	1.2	3	0.3
	015	1.5	4	0.4
	020	2	5	0.4
	025	2.5	6	0.4
	030	3	7	0.6
	040	4	9	0.6
	050	5	11	0.6
	060	6	12	0.8
	070	7	14	0.8
	080	8	16	0.8
	090	9	18	0.8
	100	10	20	1

5-2. Grip Rings  
グリップ止め輪

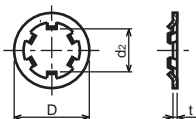


Type No. 類別番号	Type 類別
XD2-210	Grip ring グリップ止め輪

Table 5 表5

Nominal designation 呼び	d <sub>3</sub> (mm)	t (mm)	b (mm)	a (mm)	d <sub>0</sub> (mm)
020	1.9	0.5	1	1.8	0.8
025	2.35	0.5	1.2	1.9	0.9
030	2.85	0.6	1.4	1.9	0.9
035	3.3	0.6	1.6	2	0.9
040	3.8	0.8	1.8	2.8	1.2
045	4.25	0.8	2	2.9	1.3
050	4.75	0.8	2.2	2.9	1.3
060	5.7	1	2.4	3.1	1.4
070	6.7	1	2.7	3.3	1.4
080	7.7	1	3	3.5	1.4
090	8.65	1.2	3.3	4.7	1.5
100	9.65	1.2	3.5	4.7	2

5-3. Toothed Retaining Rings  
歯付き形止め輪



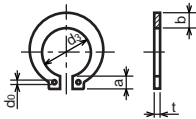
Type No. 類別番号	Type 類別
XD2-230	Toothed retaining ring 歯付き形止め輪

Table 5 表5

Nominal designation 呼び	d <sub>z</sub> (mm)	D (mm)	t (mm)	No of teeth 歯数
015	1.4	5.2	0.25	3
020	1.9	6	0.25	3
024	2.3	6.4	0.25	3
030	2.8	8	0.25	4
040	3.8	9	0.25	4
050	4.8	10	0.25	5
060	5.8	11	0.25	5
080	7.8	13	0.25	5
100	9.8	15.4	0.25	6

### 5-4. Retaining Rings - C Type

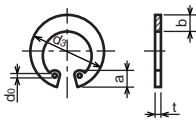
C形止め輪



Type No. 類別番号	Type 類別
XD2-310	Retaining ring - C type for shaft C形止め輪 軸用

Table 5 表5

Nominal designation 呼び	d <sub>3</sub> (mm)	t (mm)	b (mm)	a (mm)	d <sub>0</sub> (mm)
010	9.3	1	1.6	3	1.2
012	11.1	1	1.8	3.2	1.5
014	12.9	1	2	3.4	1.7
015	13.8	1	2.1	3.5	1.7
016	14.7	1	2.2	3.6	1.7
017	15.7	1	2.2	3.7	1.7
018	16.5	1.2	2.6	3.8	1.7
020	18.5	1.2	2.7	3.9	2
022	20.5	1.2	2.7	4.1	2
025	23.2	1.2	3.1	4.3	2
028	25.9	1.5	3.1	4.6	2
030	27.9	1.5	3.5	4.8	2
032	29.6	1.5	3.5	5	2.5
035	32.2	1.5	4	5.4	2.5



Type No. 類別番号	Type 類別
XD2-320	Retaining ring - C type for hole C形止め輪 穴用

Table 5 表5

Nominal designation 呼び	d <sub>3</sub> (mm)	t (mm)	b (mm)	a (mm)	d <sub>0</sub> (mm)
010	10.7	1	1.8	3.1	1.2
011	11.8	1	1.8	3.2	1.2
012	13	1	1.8	3.3	1.5
014	15.1	1	2	3.6	1.7
016	17.3	1	2	3.7	1.7
018	19.5	1	2.5	4	1.7
019	20.5	1	2.5	4	2
020	21.5	1	2.5	4	2
022	23.5	1	2.5	4.1	2
025	26.9	1.2	3	4.4	2
028	30.1	1.2	3	4.6	2
030	32.1	1.2	3	4.7	2
032	34.4	1.2	3.5	5.2	2.5
035	37.8	1.5	3.5	5.2	2.5
037	39.8	1.5	3.5	5.2	2.5
040	43.5	1.8	4	5.7	2.5
042	45.5	1.8	4	5.8	2.5
045	48.5	1.8	4.5	5.9	2.5
047	50.5	1.8	4.5	6.1	2.5
050	54.2	2	4.5	6.5	2.5
052	56.2	2	5.1	6.5	2.5
055	59.2	2	5.1	6.5	2.5
060	64.2	2	5.1	6.8	2.5
062	66.2	2	5.5	6.9	2.5
068	72.5	2.5	6	7.4	2.5
072	76.5	2.5	6.6	7.4	2.5
075	79.5	2.5	6.6	7.8	2.5
080	85.5	2.5	7	8	2.5
085	90.5	3	7	8	3
090	95.5	3	7.6	8.3	3
095	100.5	3	8	8.5	3



Prepared by  
OIP Business Support Group  
CANON INC.

**Canon**