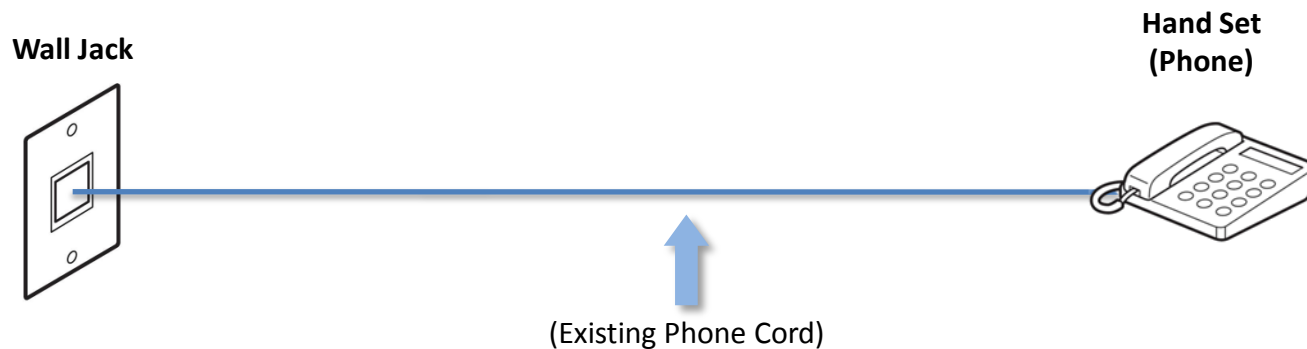


## Setting Up Your MX882 In Default Mode (Tel Priority Mode) Without An Answering Machine

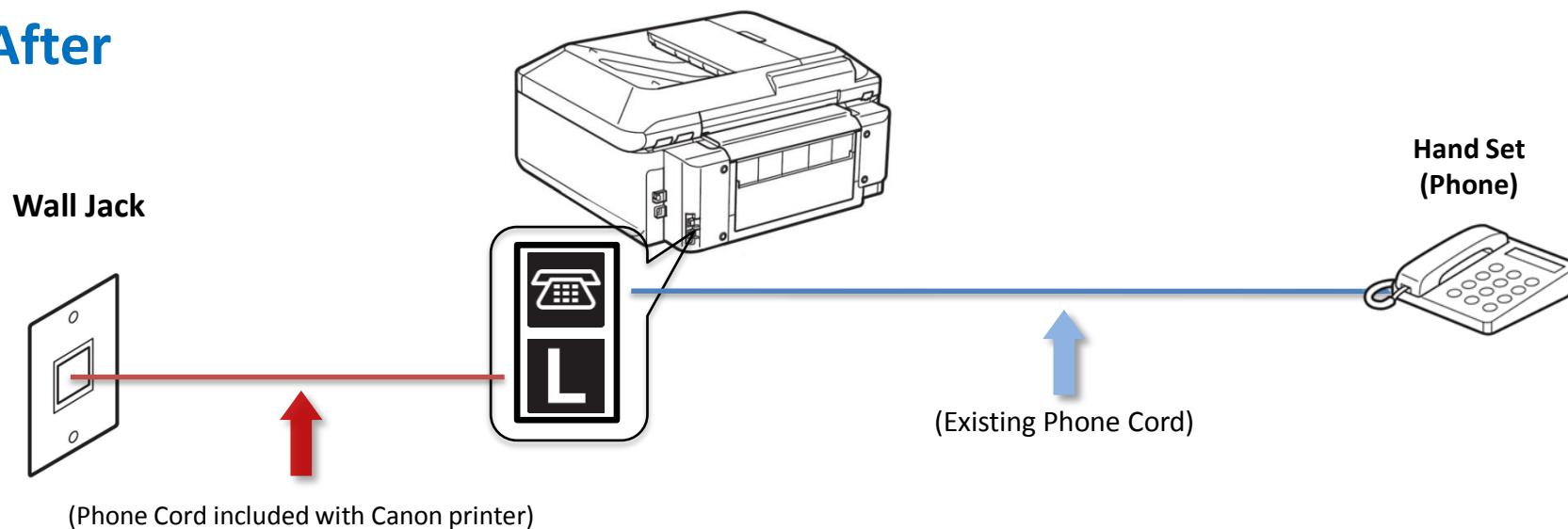
# Connecting The Phone Lines

# Fax to Phone Line Connection

**Before**



**After**



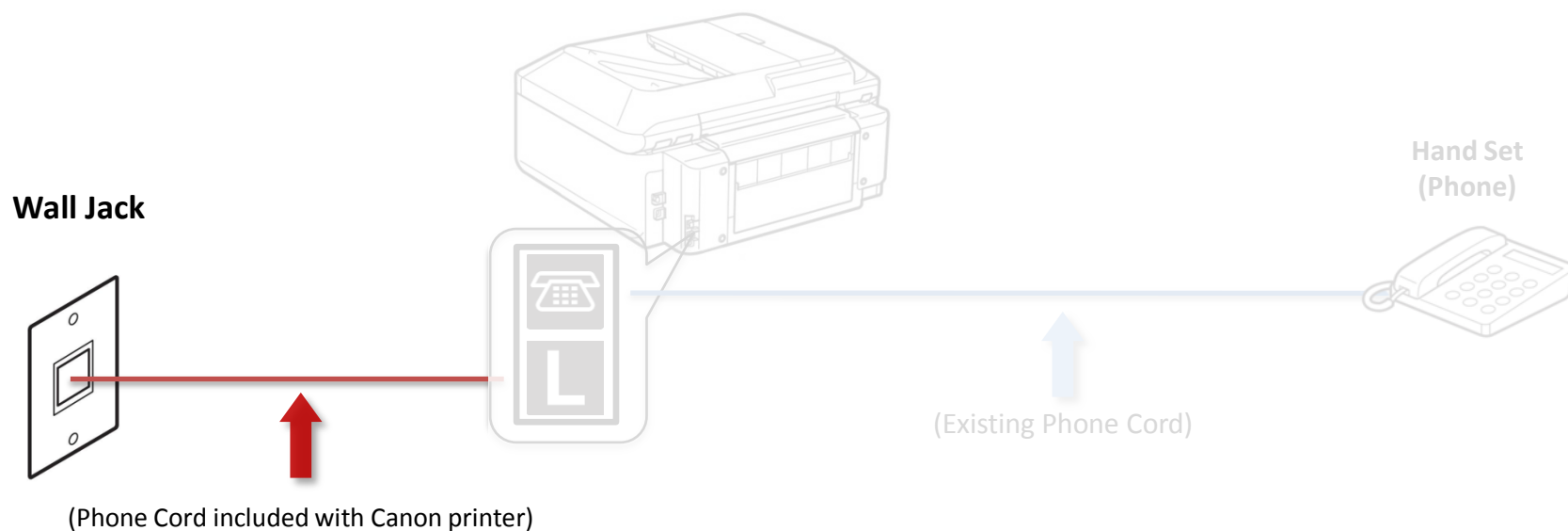
**Previous**

**Next**



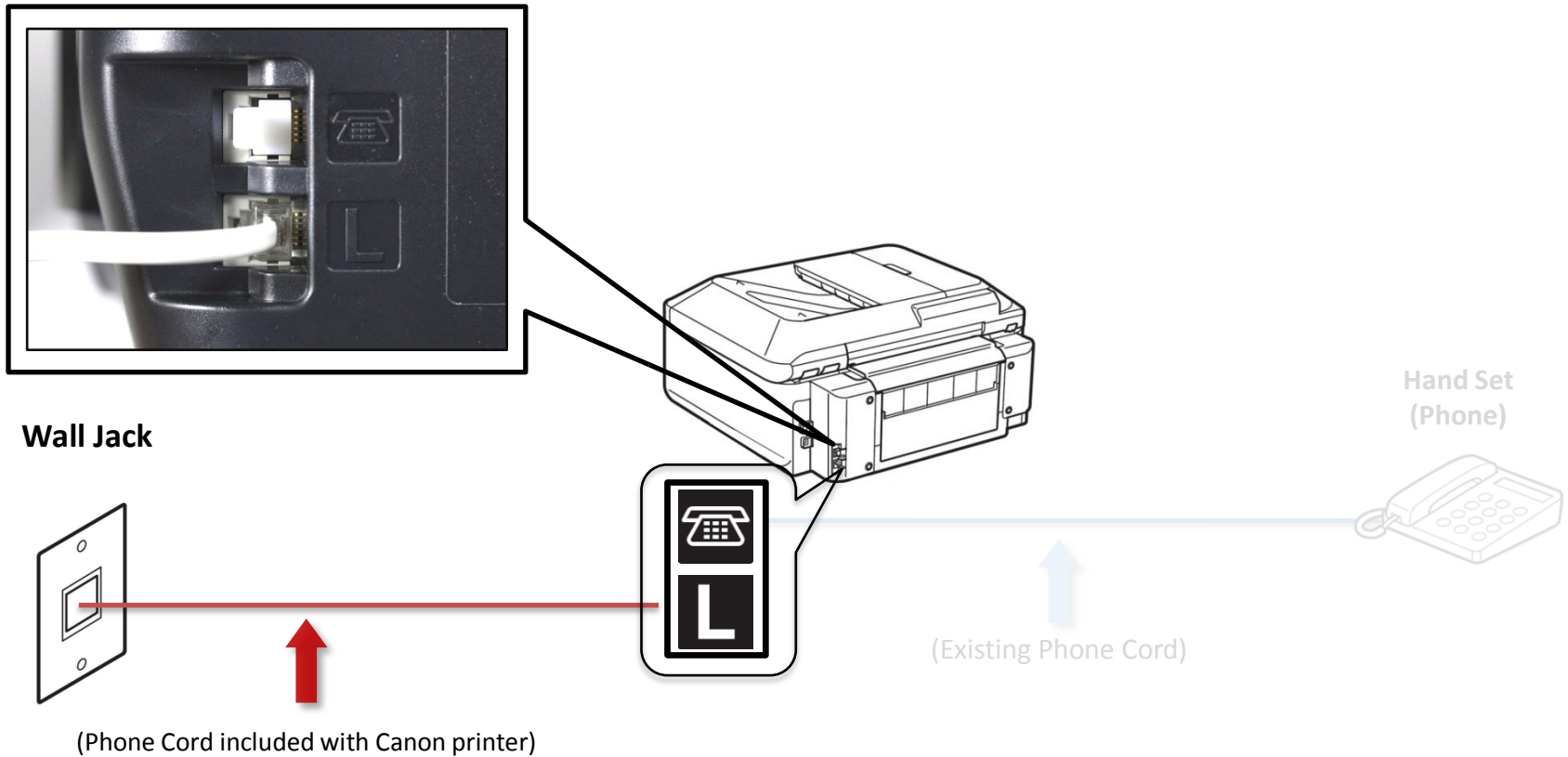
# Fax to Phone Line Connection

- Plug the provided phone cord into the wall jack



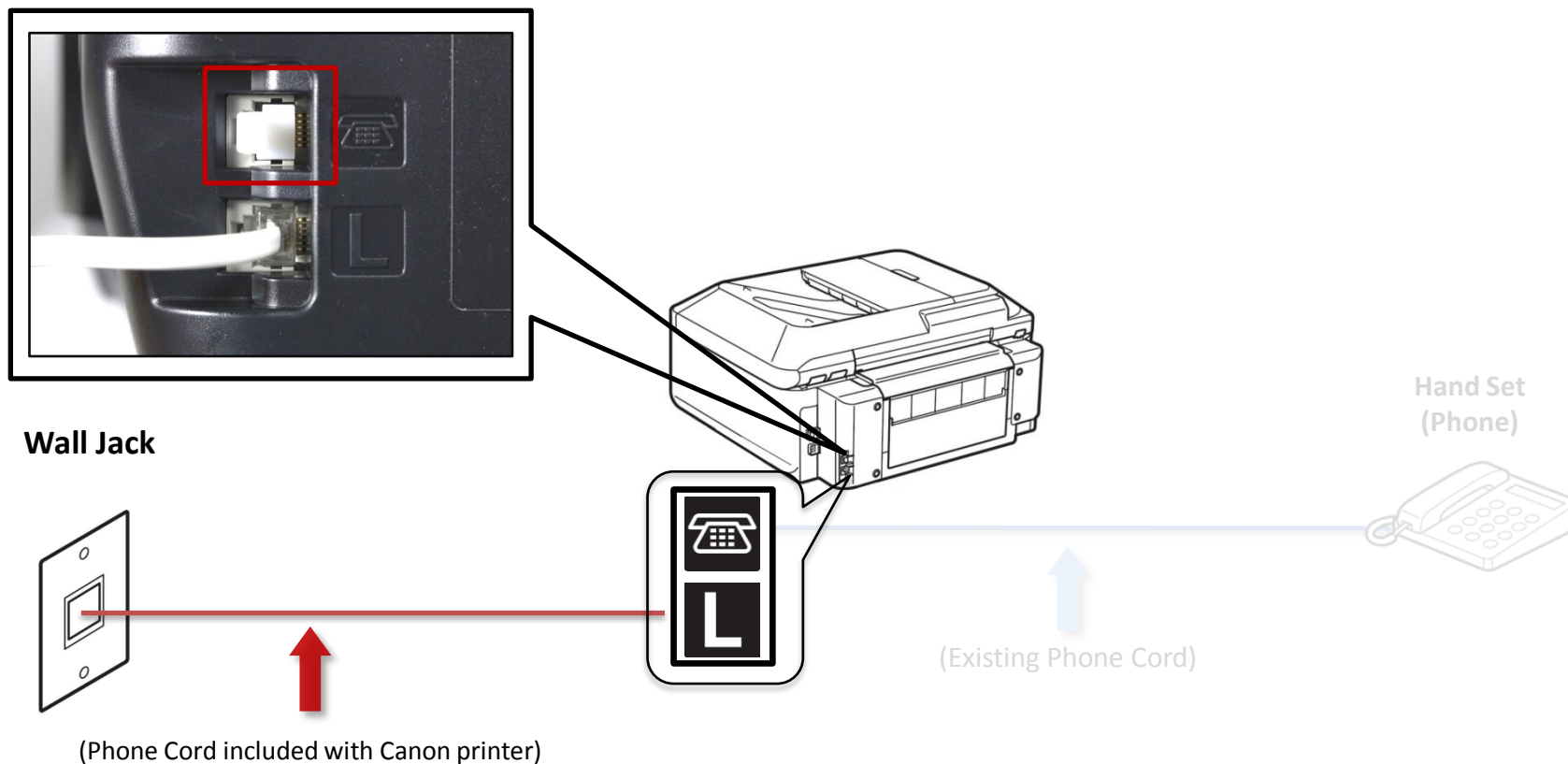
# Fax to Phone Line Connection

- Plug the provided phone cord into the “L” jack located on the rear of the multifunction



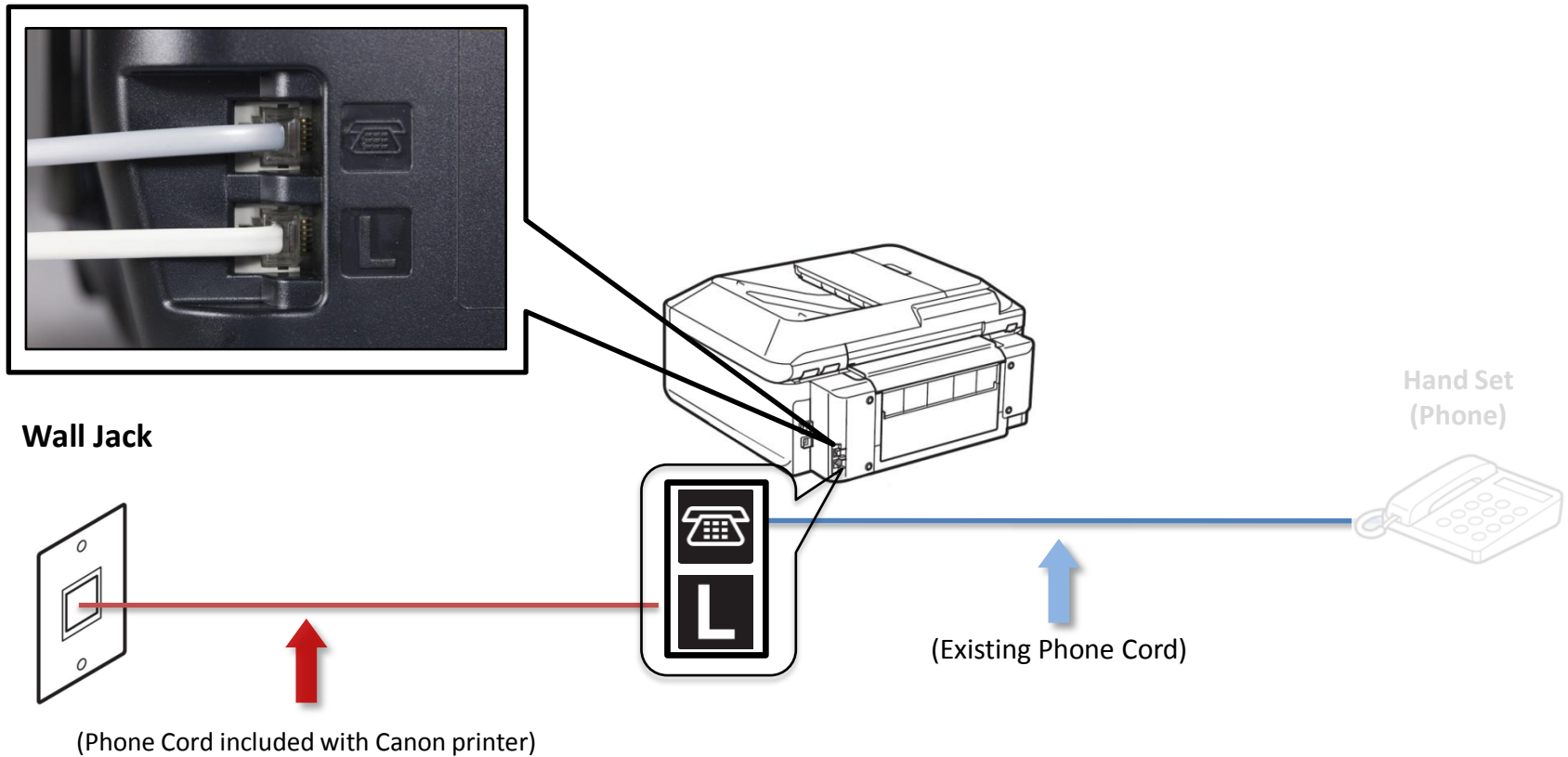
# Fax to Phone Line Connection

- Remove the white plug (D) from the upper jack.



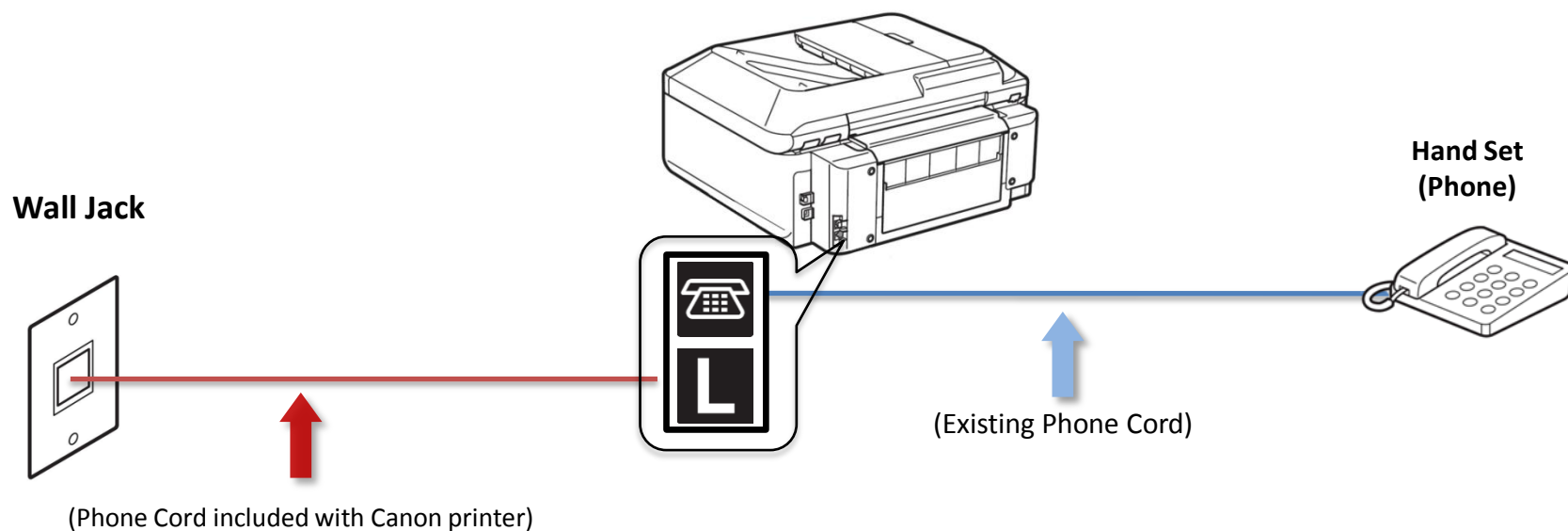
# Fax to Phone Line Connection

- Plug the second phone cord into the “telephone” jack located on the rear of the multifunction



# Fax to Phone Line Connection

- Plug the second phone cord into the phone



**Previous**

**Next**





# Setting Up The Receive Mode

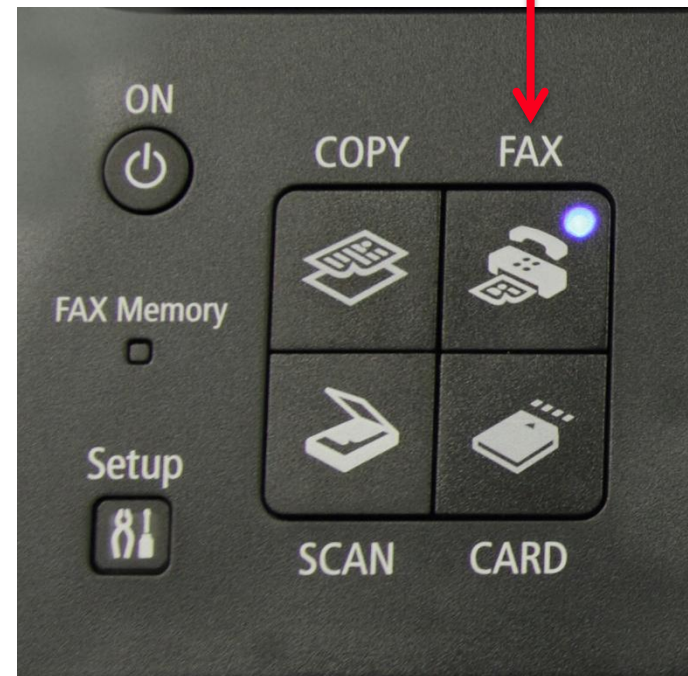
## Step 1

Turn on the MX882 by pressing the **ON** button.



## Step 2

Press the **FAX** button.



## Step 3

The fax standby screen will appear.



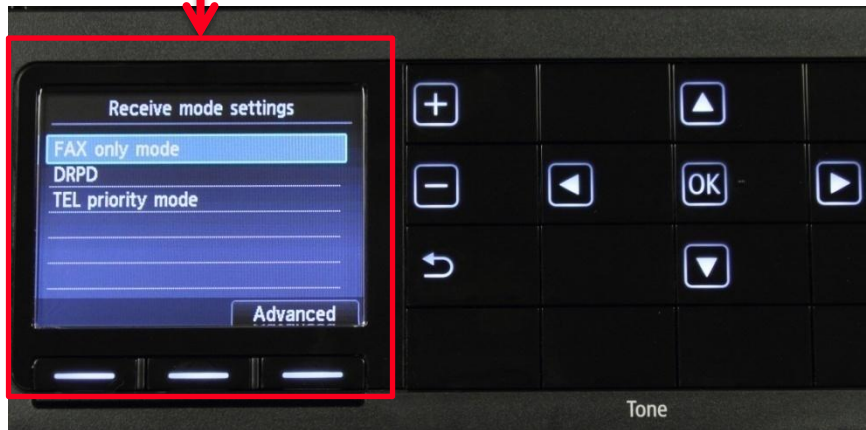
## Step 4

Press the center **FUNCTION** button.



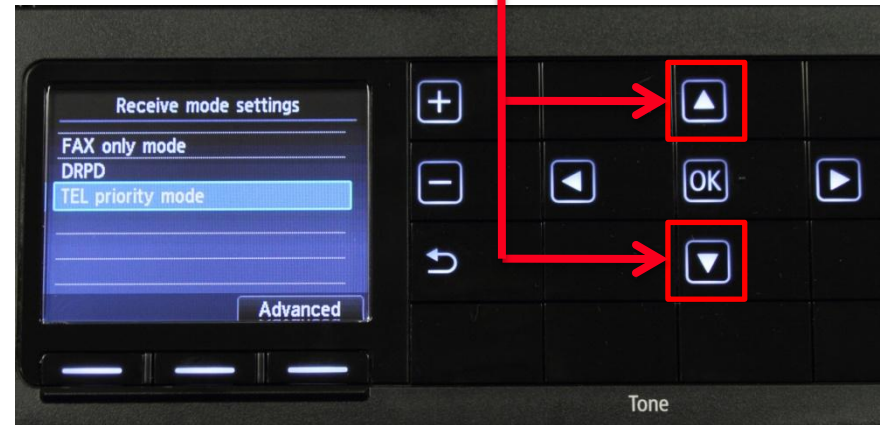
## Step 5

The Receive mode settings screen will appear.



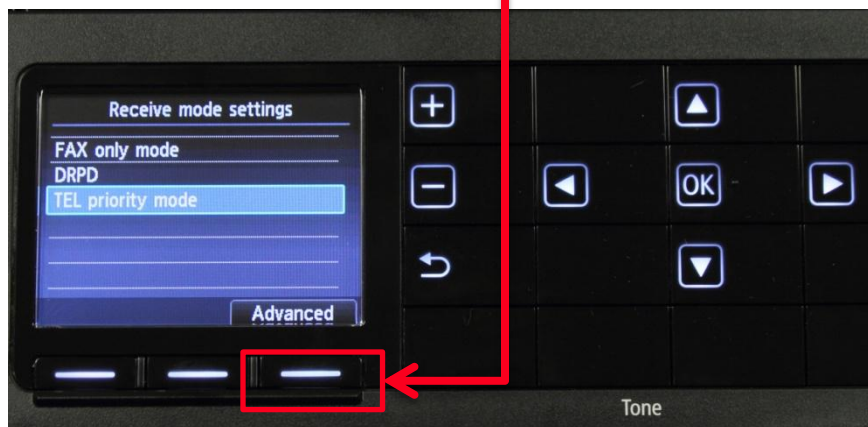
## Step 6

Use the **UP** or **DOWN** button to select "TEL priority mode".



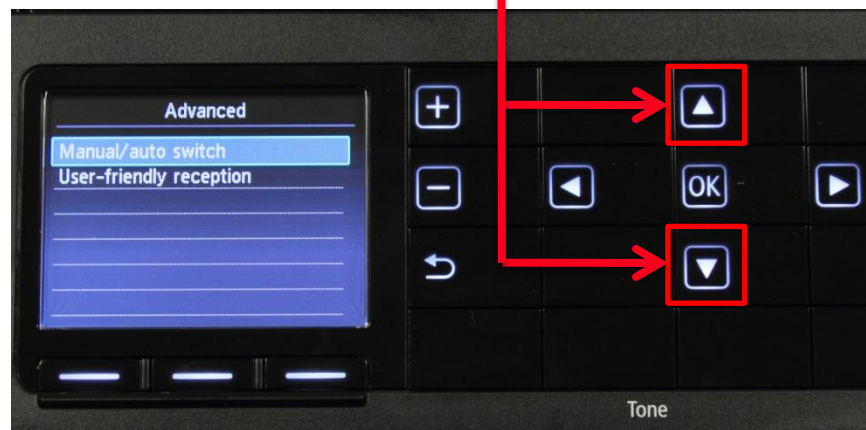
## Step 7

Press the right **FUNCTION** button under the **Advanced** label



## Step 8

Use the **UP** or **DOWN** button to select "User-friendly reception".



## Step 9

Ensure “User-friendly reception” is selected



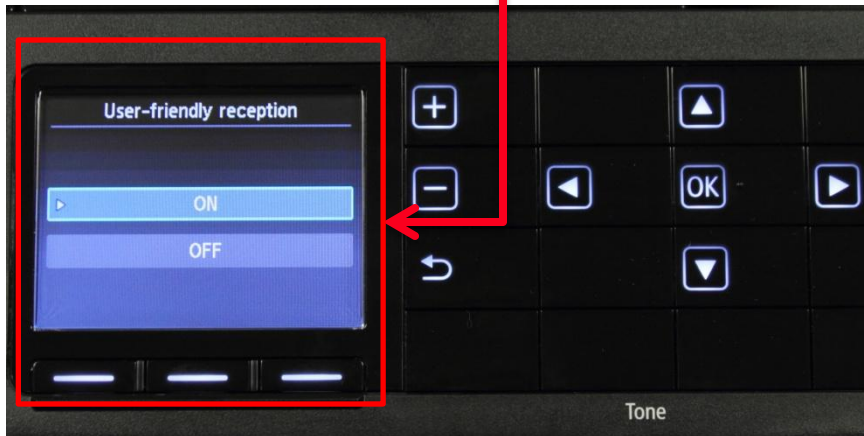
## Step 10

Press the OK button



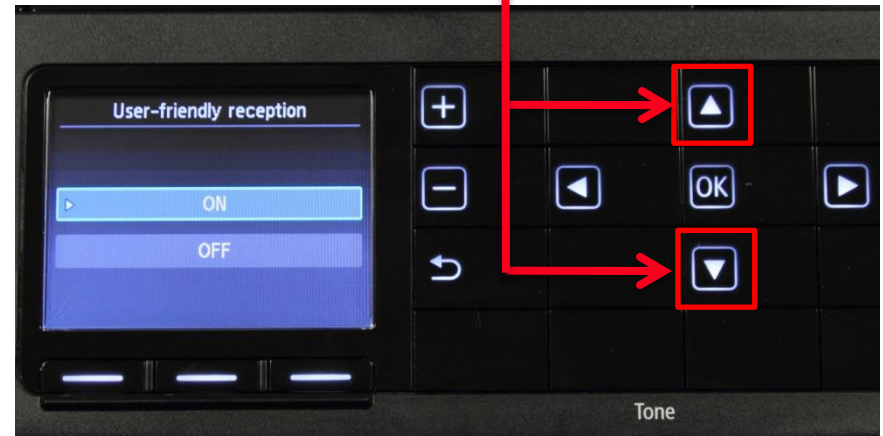
## Step 11

The “User-friendly reception” screen will appear



## Step 12

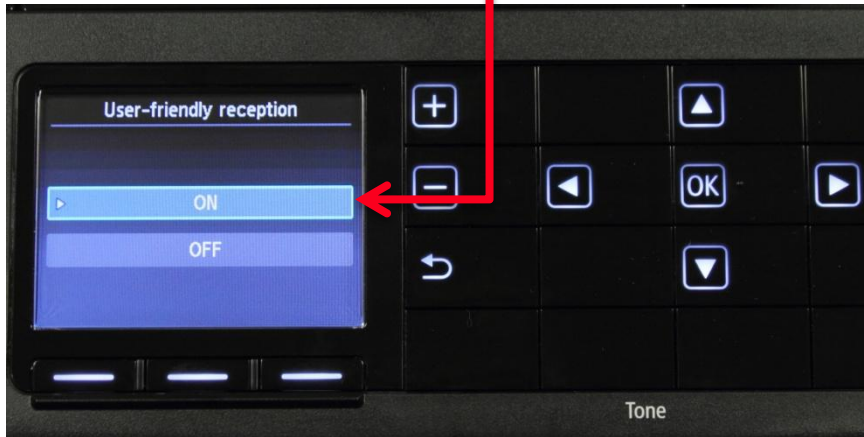
Use the **UP** or **DOWN** button to select “ON”





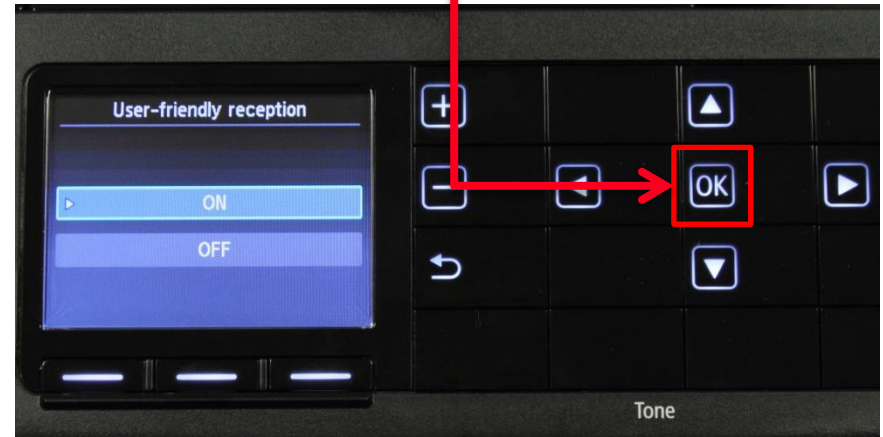
## Step 13

Ensure "ON" is selected



## Step 14

Press the **OK** button





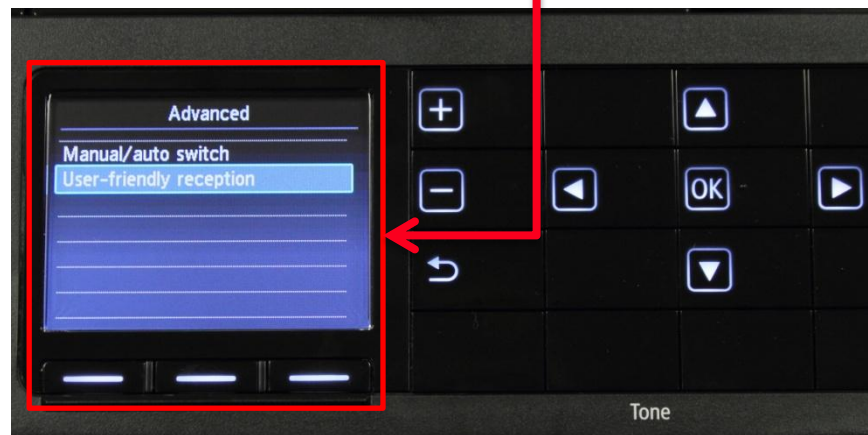
## Step 15

A confirmation screen will appear briefly



## Step 16

You will return to the "Advanced" selection screen



## Step 17

Press the **BACK** button



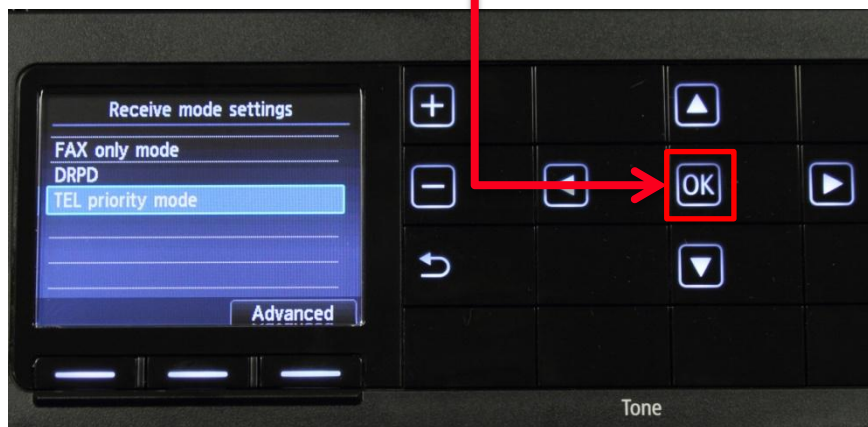
## Step 18

You will return to the “Receive mode setting” screen. Confirm that “Tel priority mode” is selected



## Step 19

Press the **OK** button



## Step 20

You will return to the “Fax standby screen”. The MX882 is ready to receive a fax



# Receiving A Fax

To receive a fax:

- Pick up the handset on the phone connected to the MX882.
- Listen for fax tones.
- When the tones stop hang up the handset.
- The MX882 will receive the fax document.

**IMPORTANT:** In order to receive a fax, you must pick up the handset on a phone that is connected to the multifunction.

