

## Setting Up Your MX860 In Default Mode (Tel Priority Mode) With An Answering Machine DSL/Cable Modem Connection

# Connecting The Phone Lines

# Connecting Your Phone/Answering Machine

Is your answering machine built into your phone?

**YES**

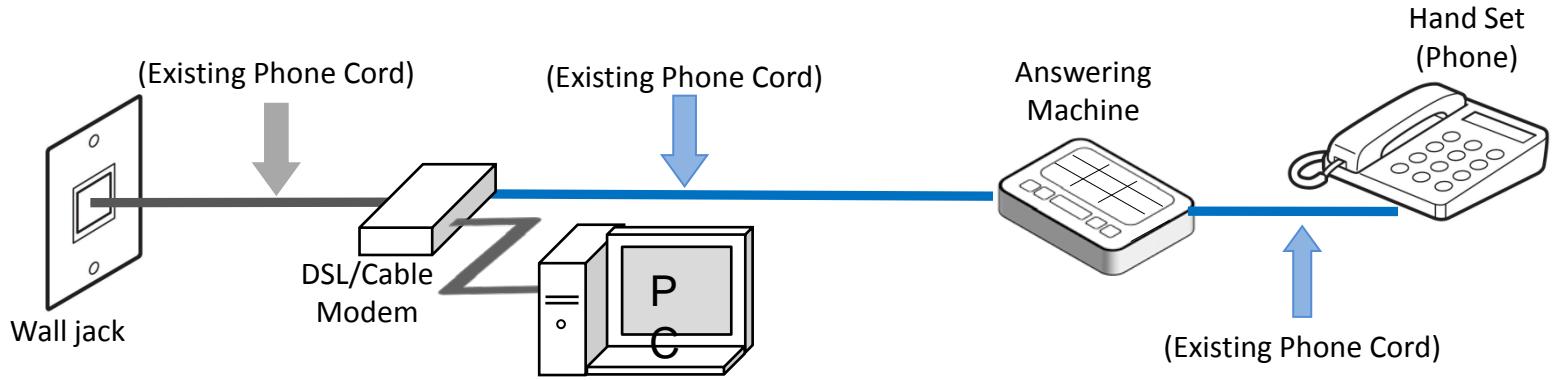
Click Here or Go To Page 12

**NO**

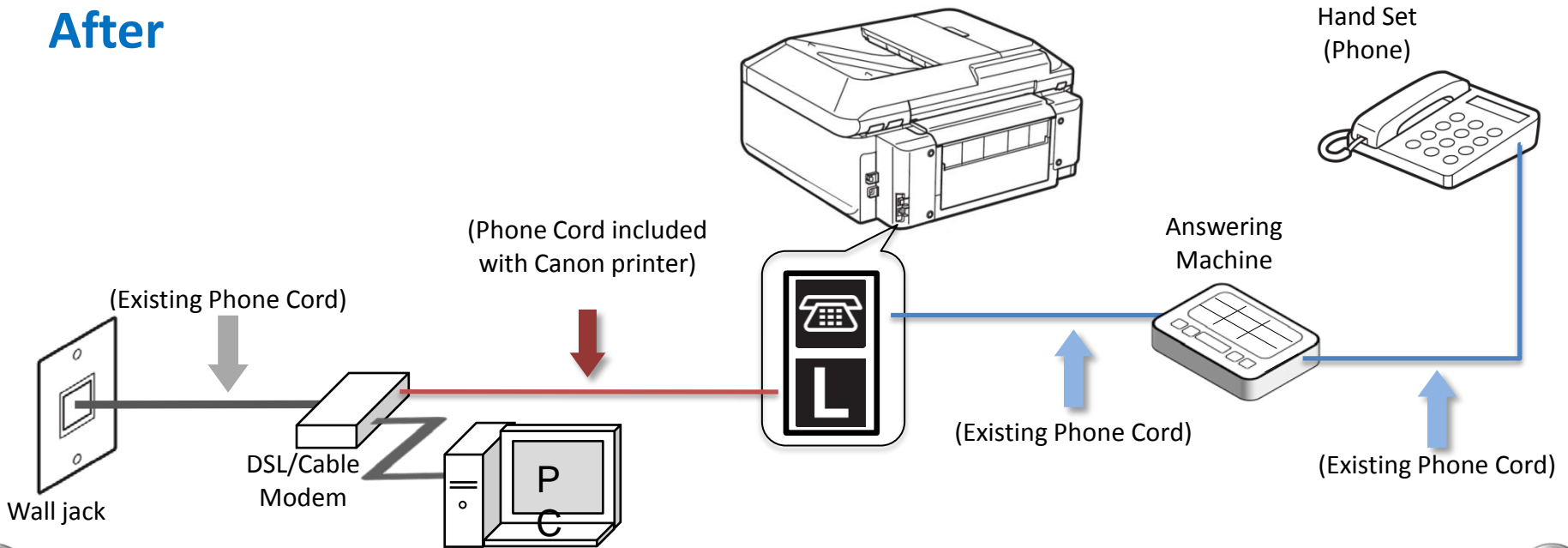
Click the Next Button

# Fax to Phone Line Connection

Before



After

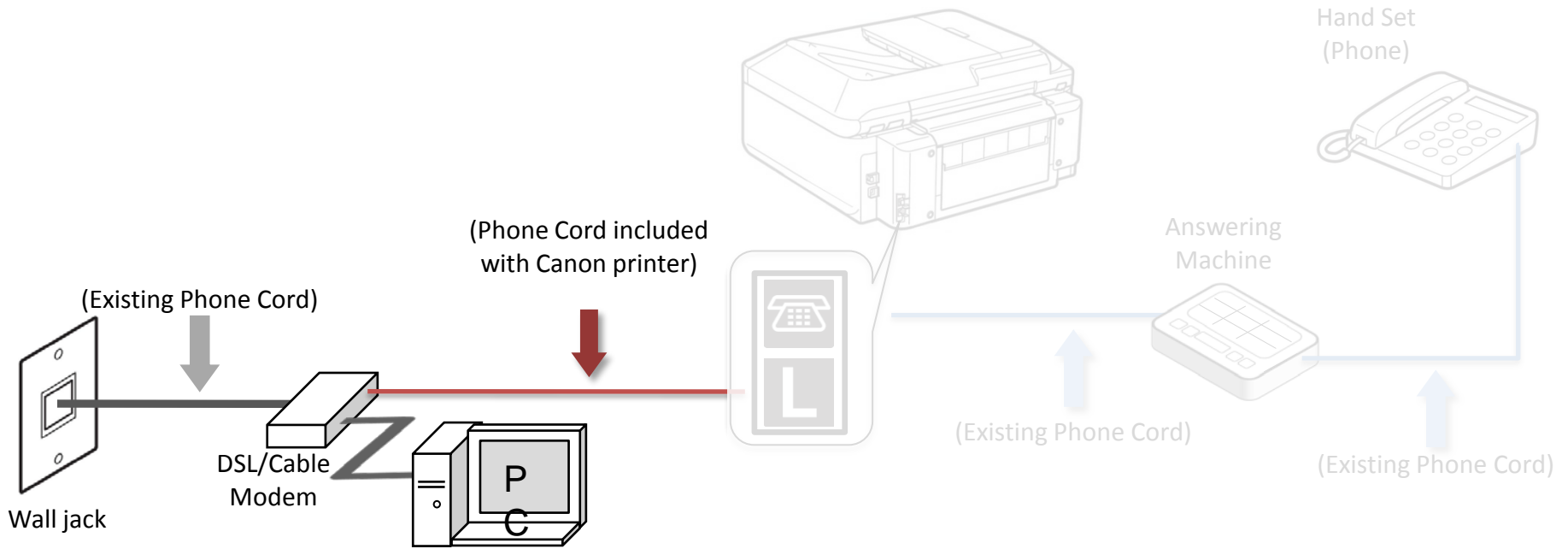


 Previous

Next 

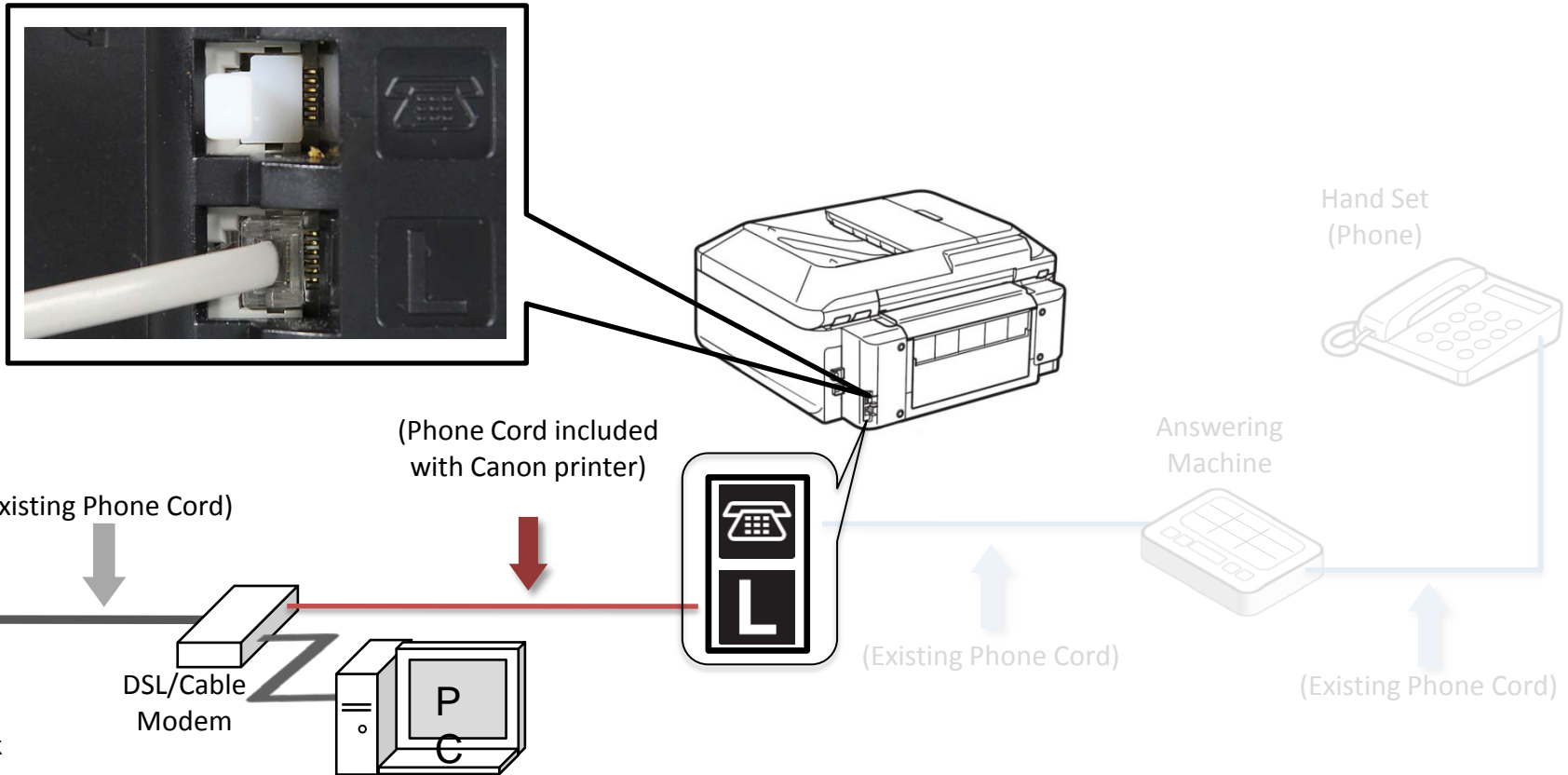
# Fax to Phone Line Connection

- Plug the provided phone cord into the DSL/Cable Modem



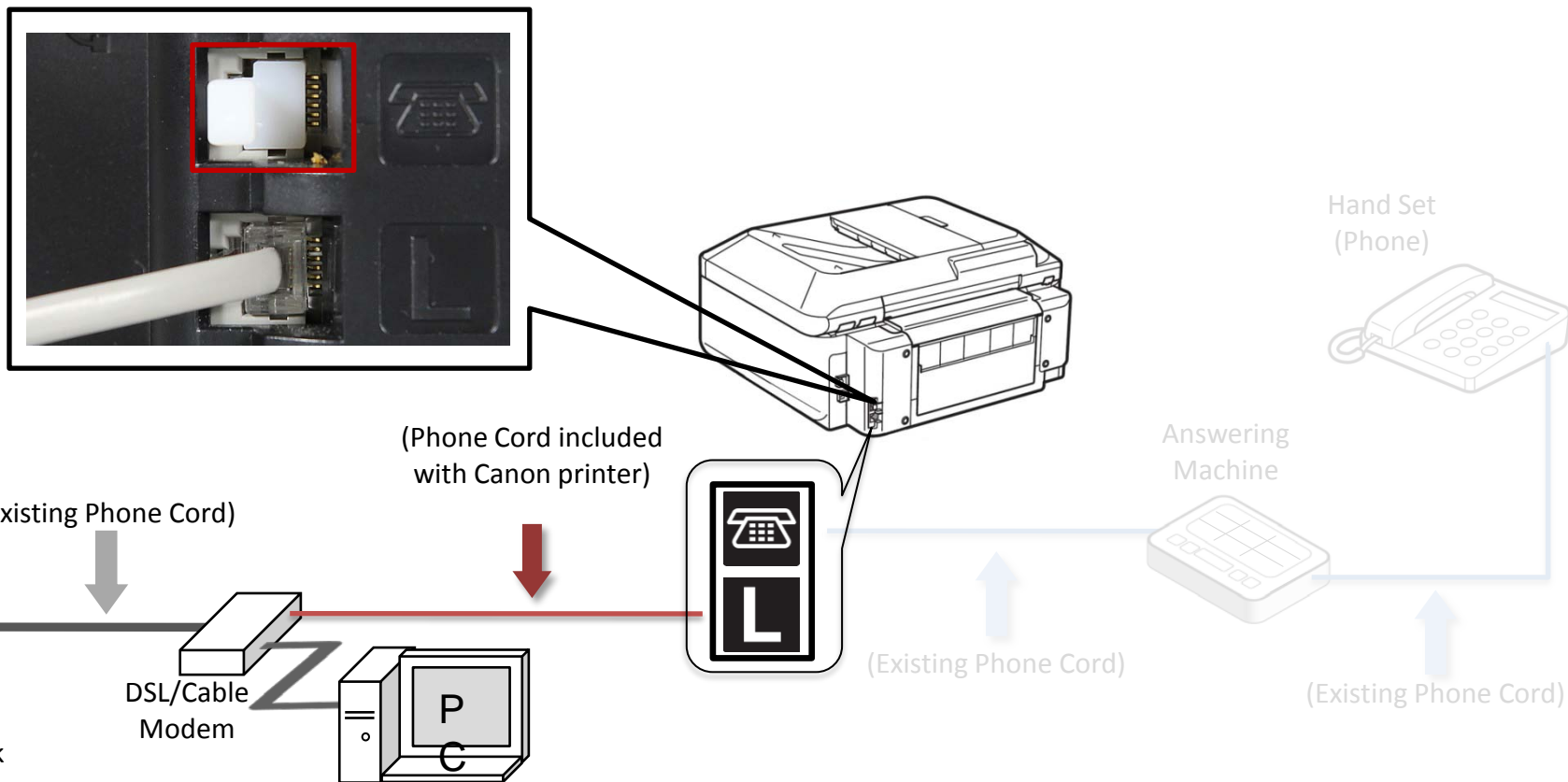
# Fax to Phone Line Connection

- Plug the provided phone cord into the “L” jack in the rear of the multifunction



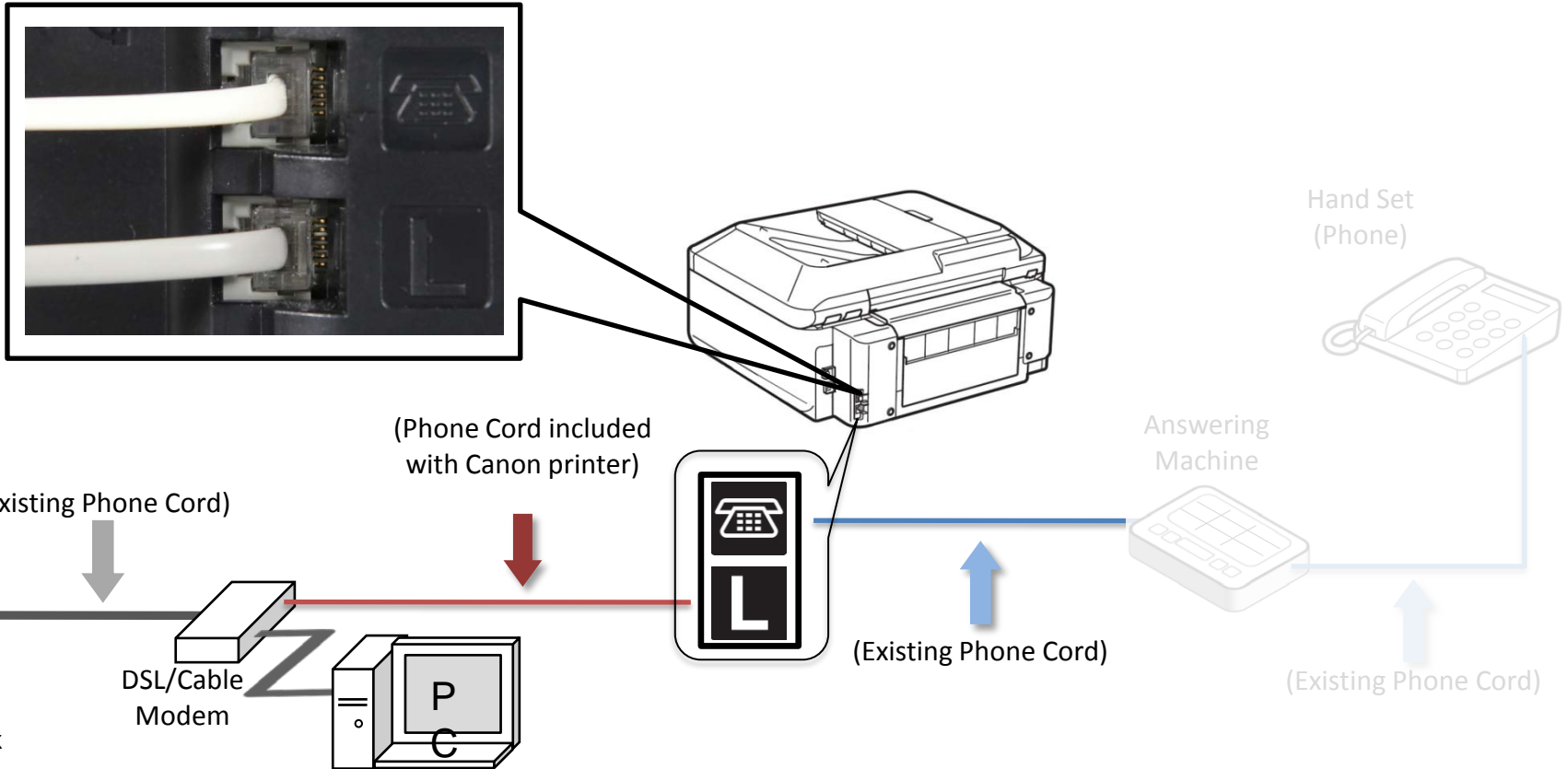
# Fax to Phone Line Connection

- Remove the white plug (D) from the upper jack



# Fax to Phone Line Connection

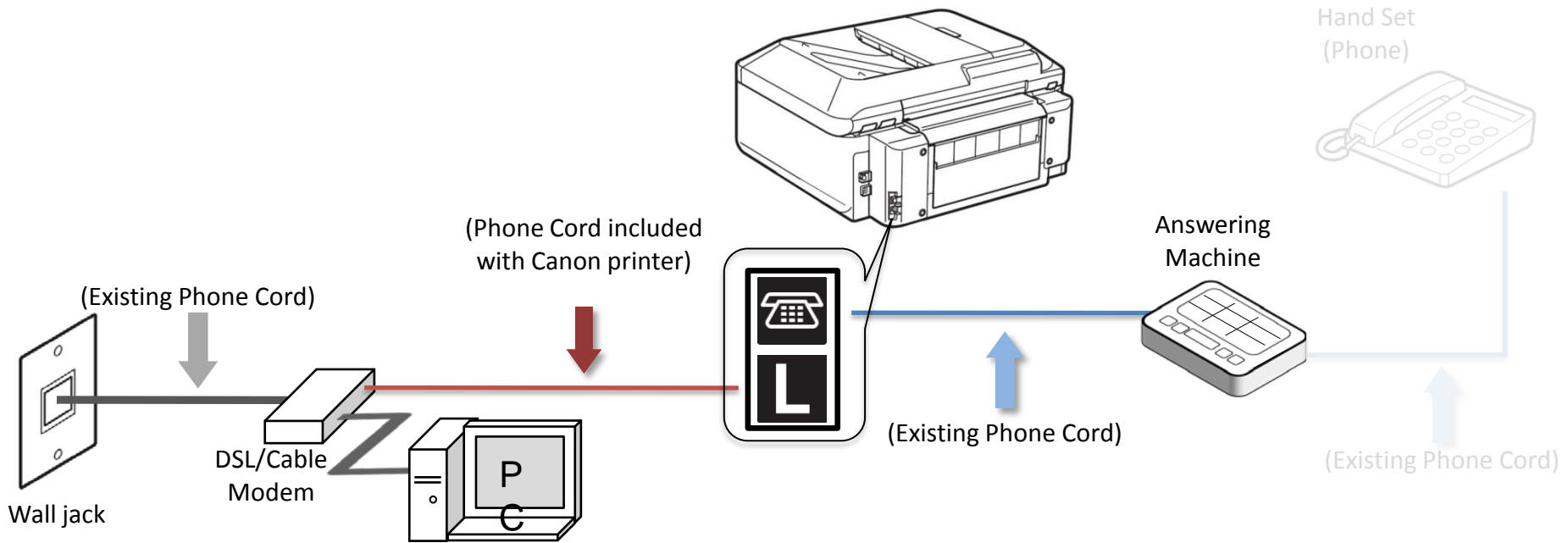
- Plug the second phone cord into the “telephone” jack located on the rear of the multifunction





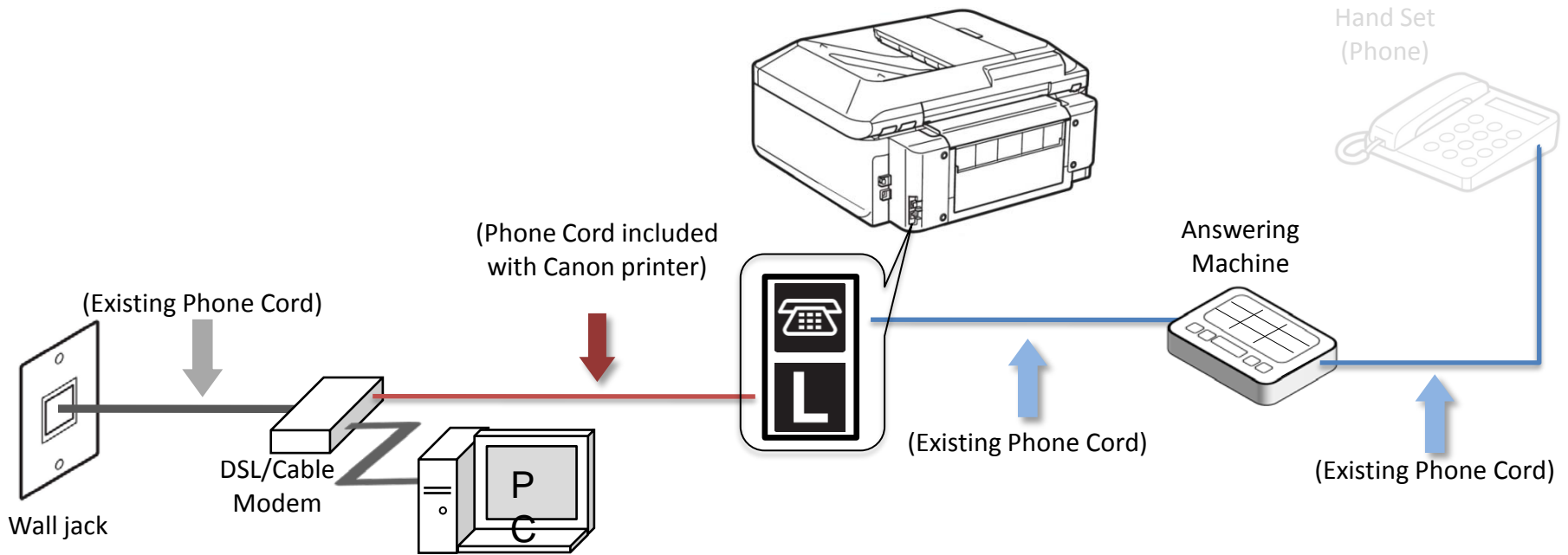
# Fax to Phone Line Connection

- Plug the second phone cord into the answering machine



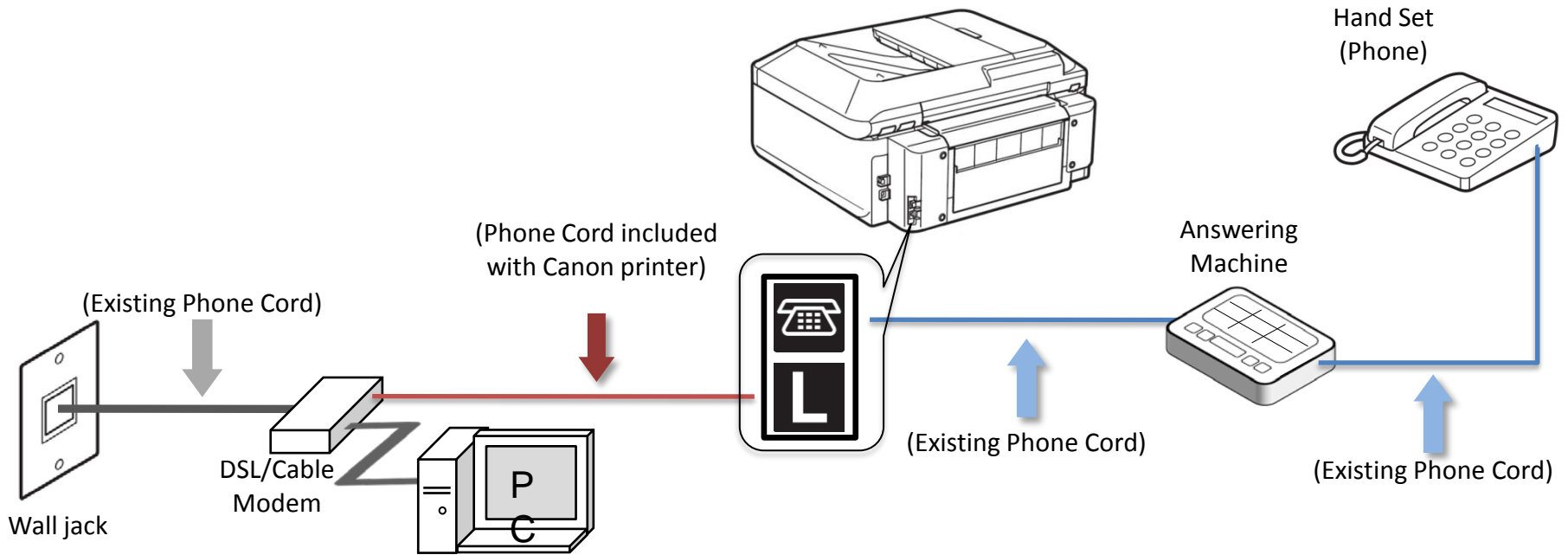
# Fax to Phone Line Connection

- Plug the third phone cord into the answering machine



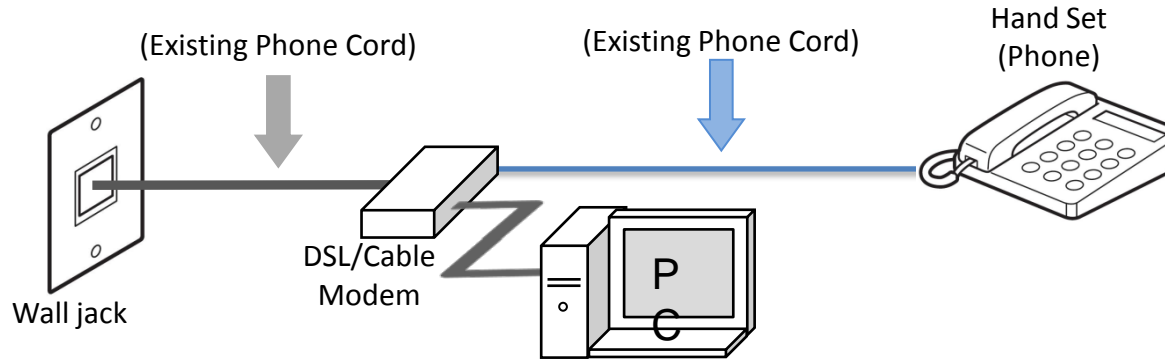
# Fax to Phone Line Connection

- Plug the third phone cord into the phone

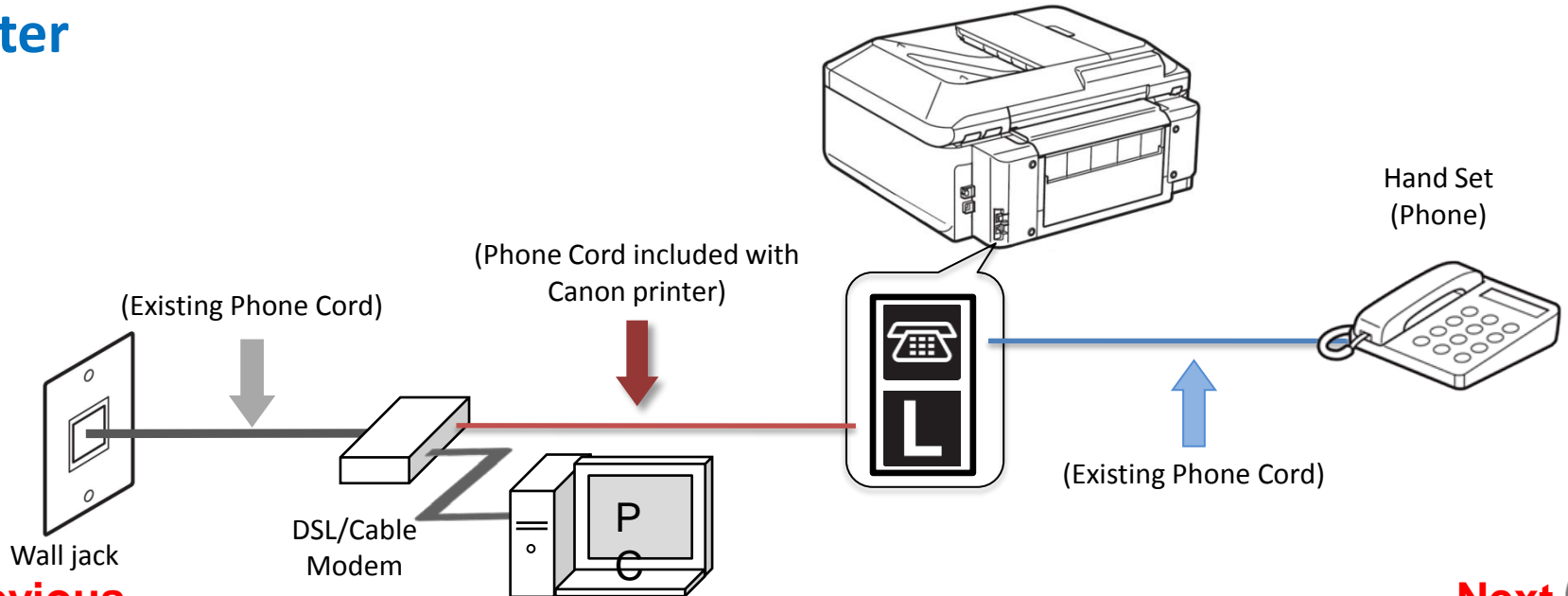


# Fax to Phone Line Connection

## Before



## After

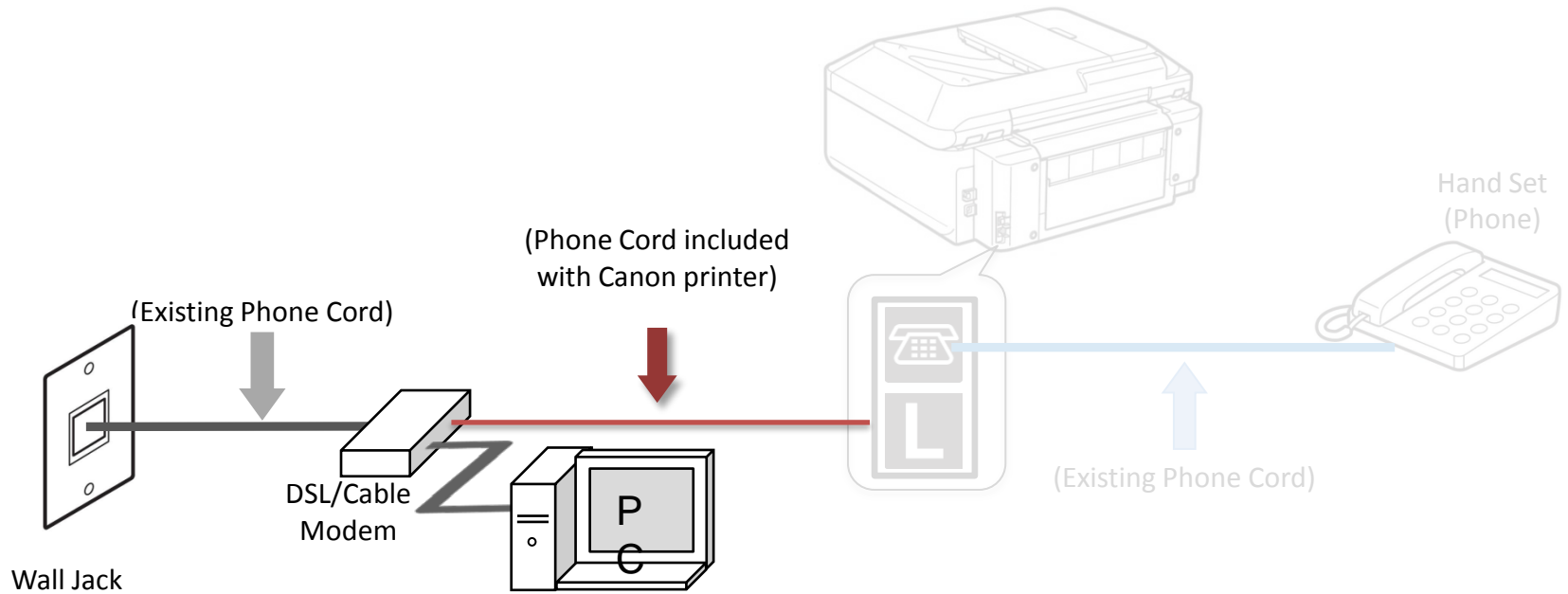


[Previous](#)

[Next](#)

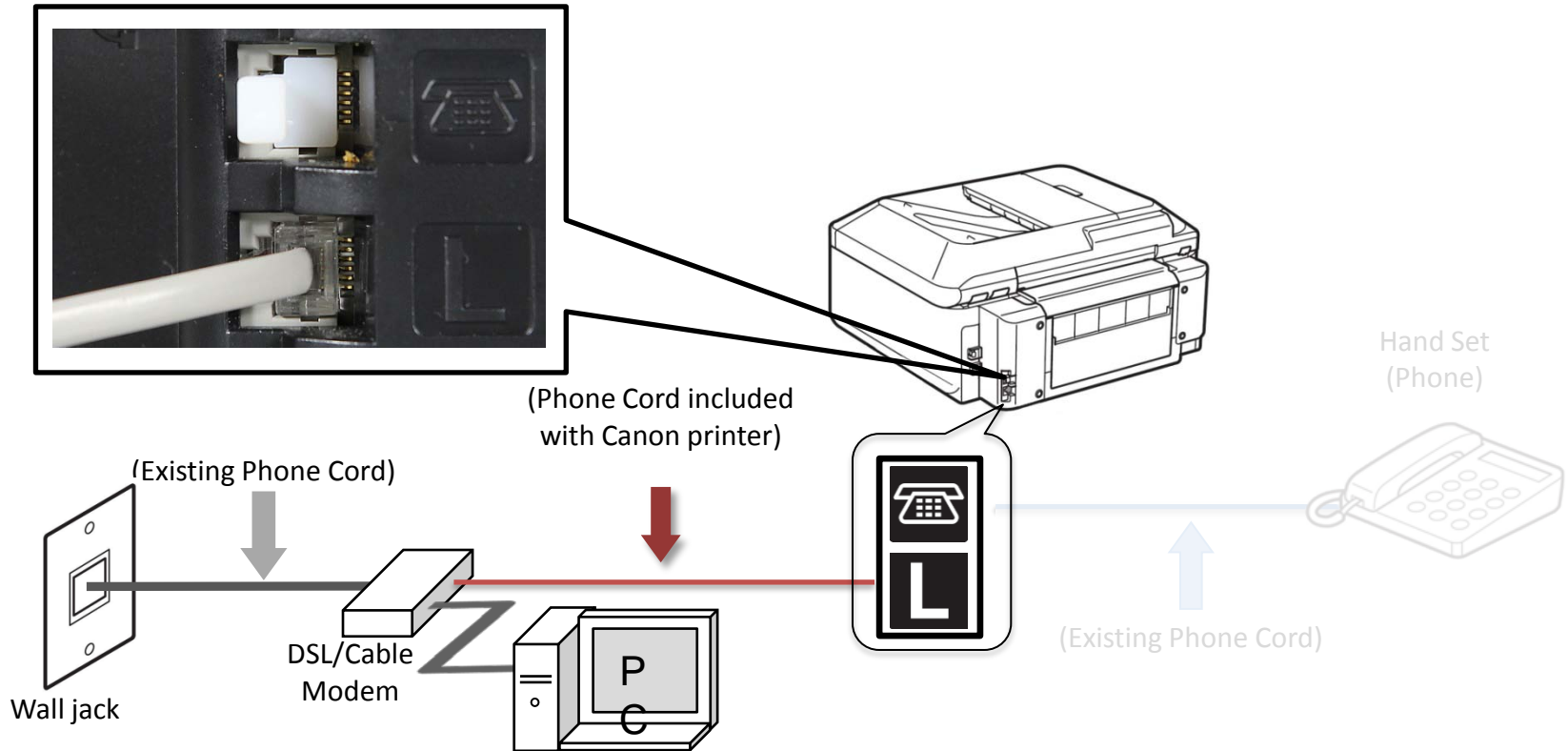
# Fax to Phone Line Connection

- Plug the provided phone cord into the DSL/Cable Modem



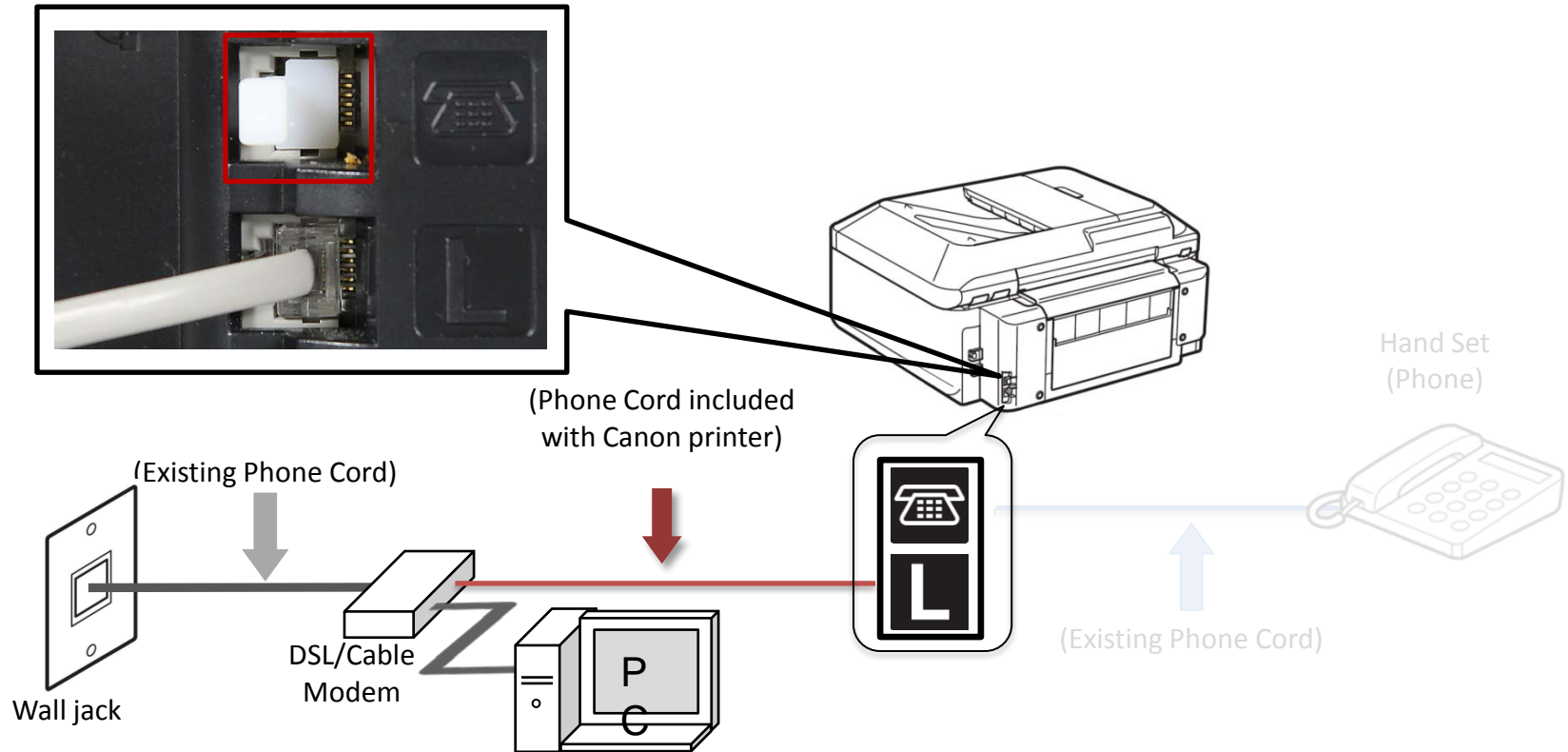
# Fax to Phone Line Connection

- Plug the provided phone cord into the “L” jack in the rear of the multifunction



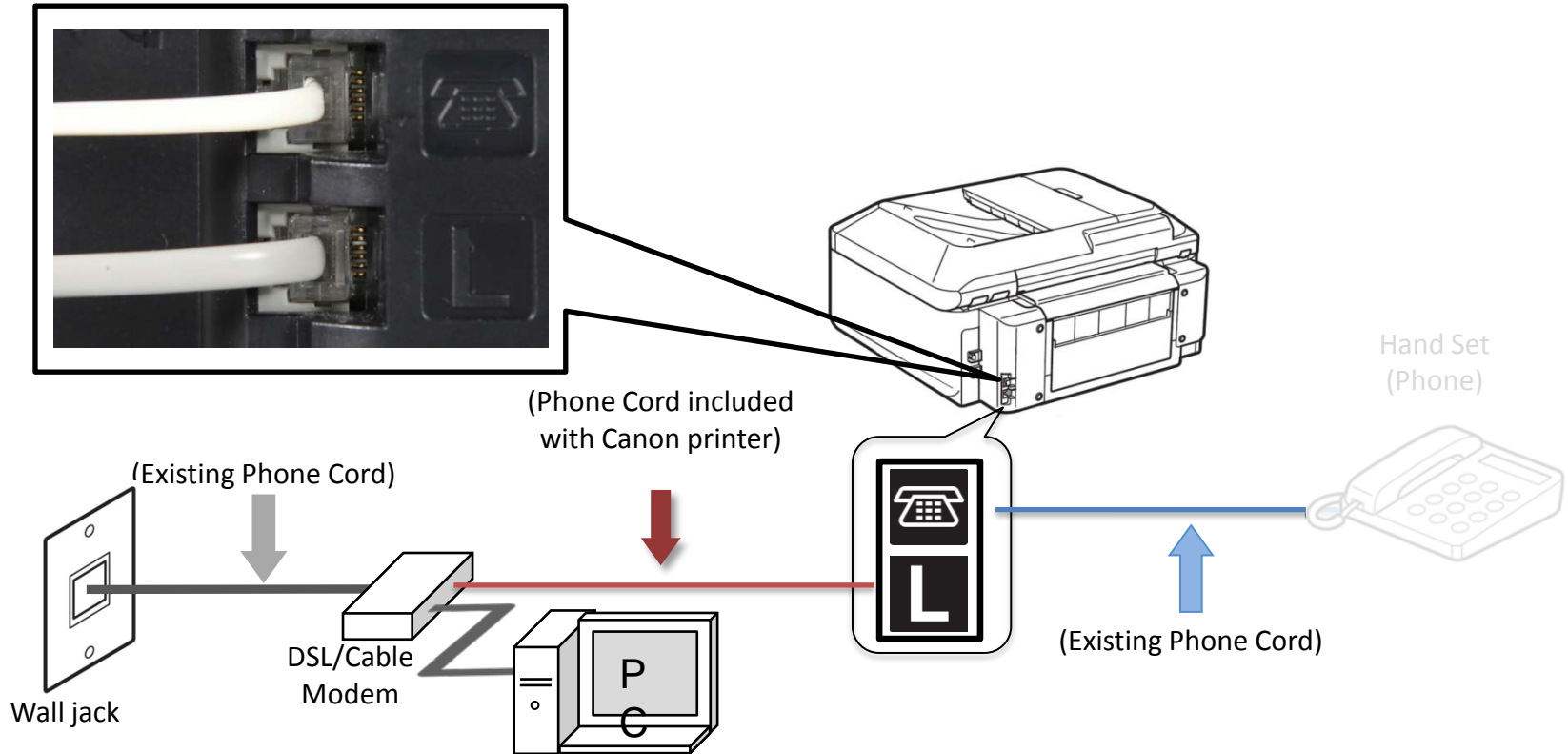
# Fax to Phone Line Connection

- Remove the white plug (D) from the upper jack



# Fax to Phone Line Connection

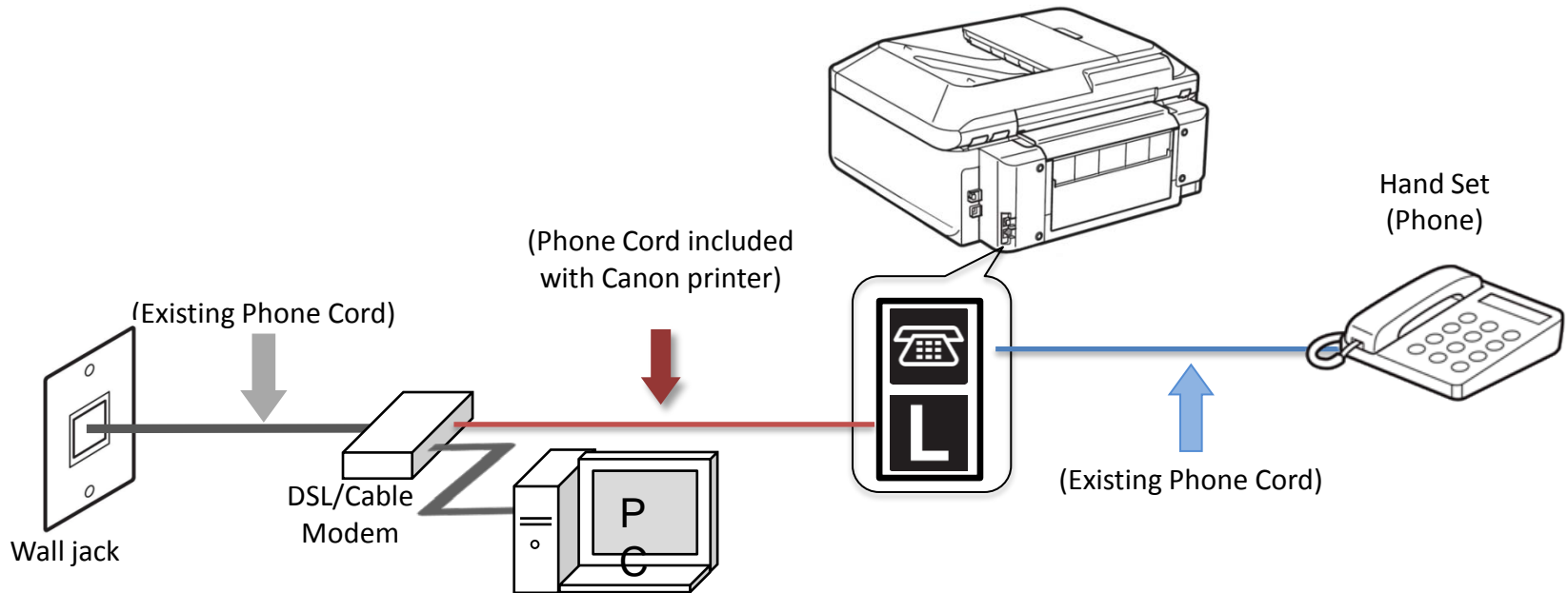
- Plug the second phone cord into the “telephone” jack located on the rear of the multifunction





# Fax to Phone Line Connection

- Plug the existing phone cord into the phone



# Setting Up The Receive Mode



**Return To “Connecting Your Phone/Answering Machine”**

**Next**



## Step 1

Turn on the MX860 by pressing the **ON** button.



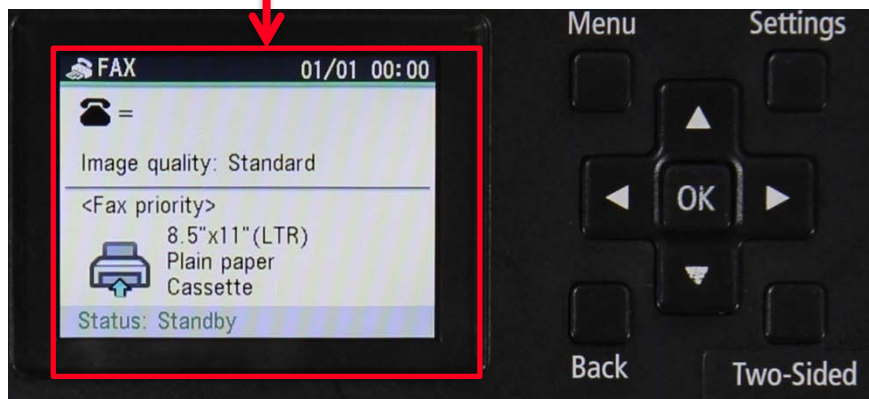
## Step 2

Press the **FAX** button.



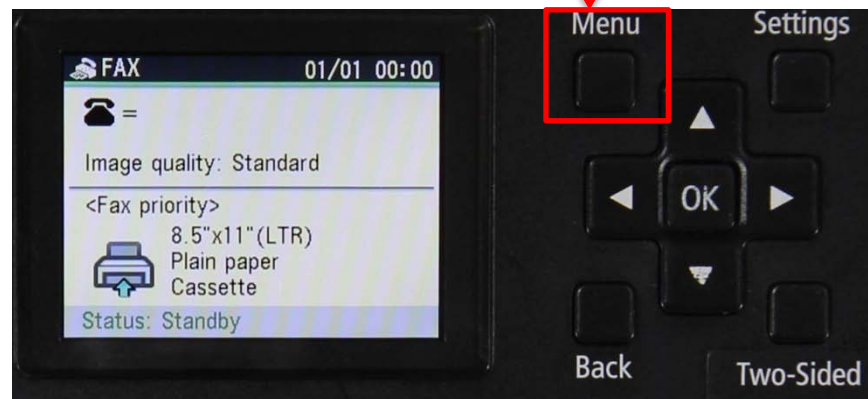
## Step 3

The fax standby screen will appear.



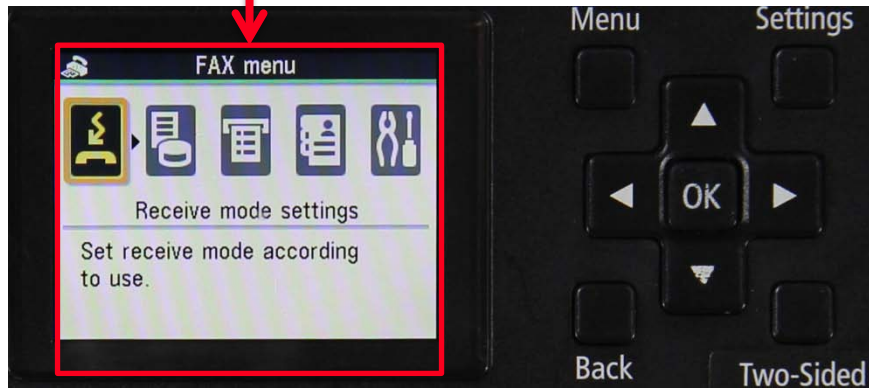
## Step 4

Press the **MENU** button.



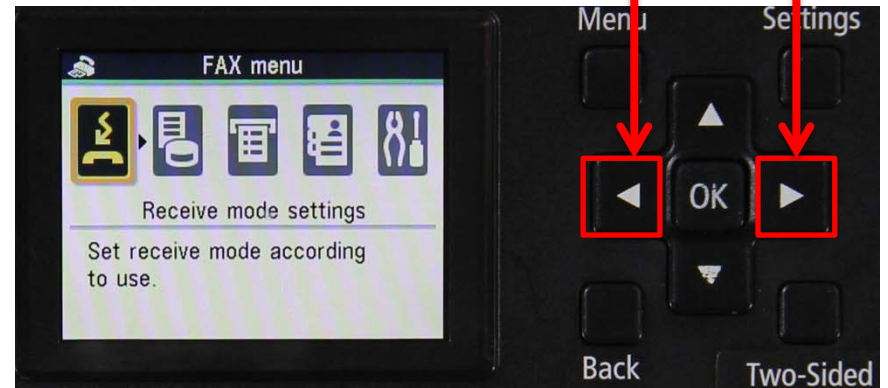
## Step 5

The FAX menu screen will appear.



## Step 6

Press the center **Left or Right** button to select "Receive mode settings".



## Step 7

Ensure "Receive mode settings" is selected.



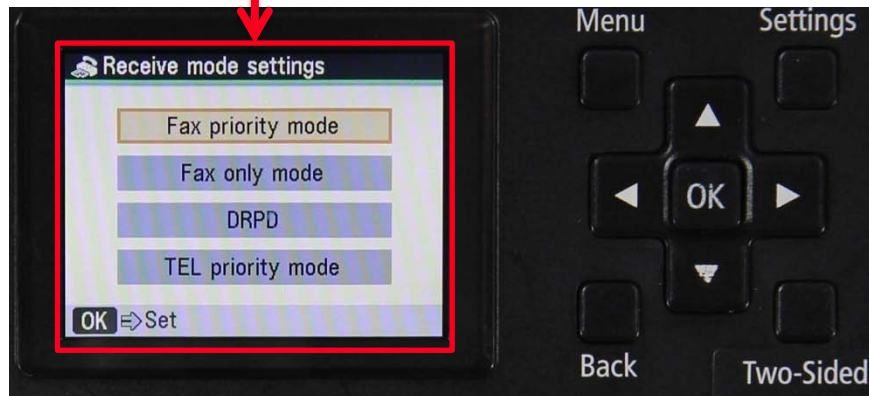
## Step 8

Press the center **OK** button.



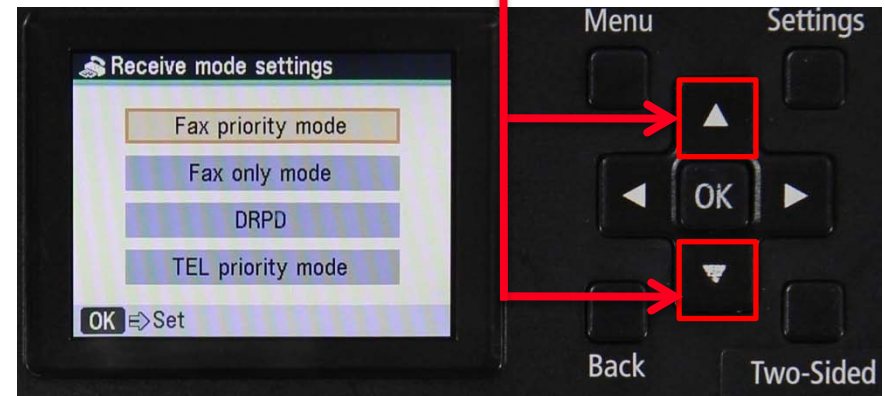
## Step 9

The Receive mode settings screen will appear.



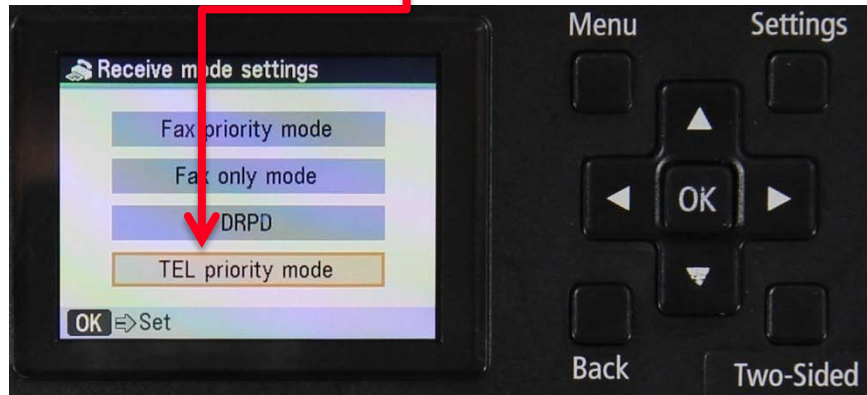
## Step 10

Use the **UP** or **DOWN** button to select "TEL priority mode".



## Step 11

Ensure that “TEL priority mode” is highlighted.



## Step 12

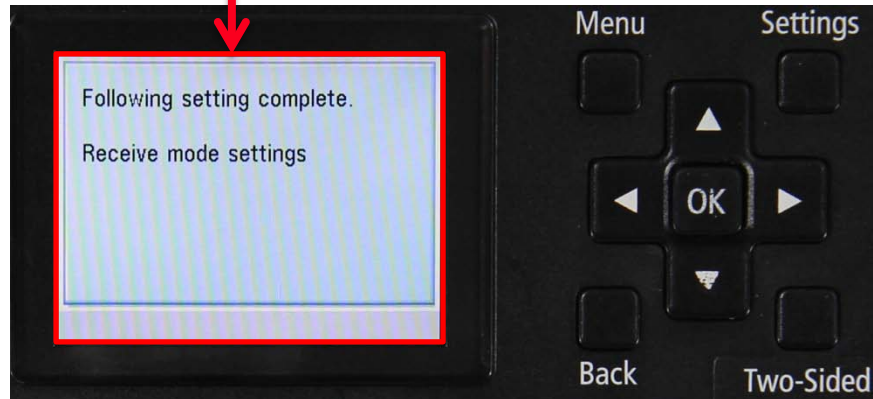
Press the **OK** button.





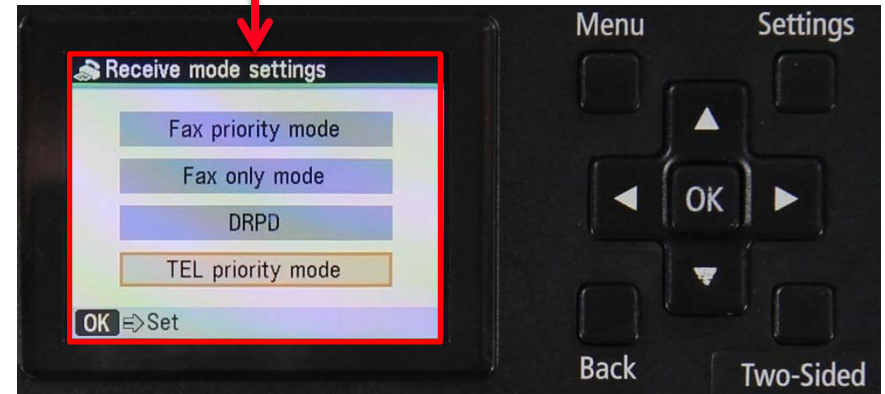
## Step 13

A confirmation screen will appear briefly.



## Step 14

The "Receive mode settings" screen will reappear.



## Step 15

Press the **FAX** button.



## Step 16

Your MX860 is now set to Tel priority mode. Notice that the mode is listed on the fax standby screen.



# Receiving A Fax

To receive a fax when you are home you will:

- Pick up the handset on the phone connected to the MX860.
- Listen for fax tones.
- When the tones stop hang up the handset.
- The MX860 will receive the fax document.

To receive a fax while you are away:

- The answering machine will answer the call.
- If fax tones are heard by the MX860 it will take over the call and receive the fax document.

**IMPORTANT:** In order to receive a fax, you must either pick up the handset on a phone that is connected to the MX860 or let your answering machine answer the call.

