



# Setting Up Your MX722 In Default Mode (Tel Priority Mode) Without An Answering Machine



# Fax Easy Setup

Click [Next](#) to step through this image-friendly version of **Fax Easy Setup**.

---

If you started **Fax Easy Setup**, on the fax machine's operation panel, and prefer to go through this image-friendly version...

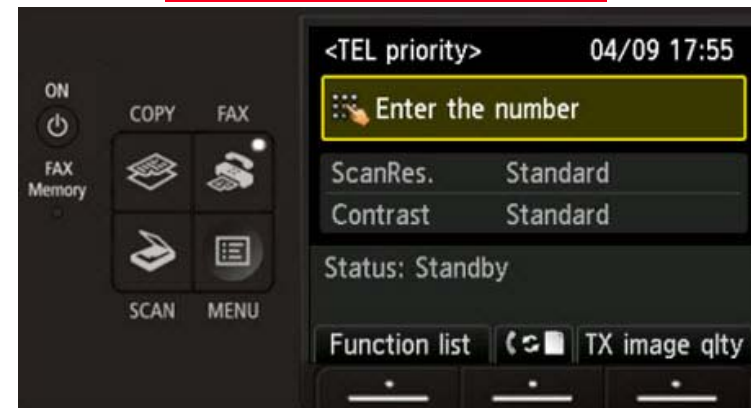
## Step 1

Press the **FAX** button at any screen to go to fax standby mode.



## Step 2

Click [Next](#) to proceed through the setup.



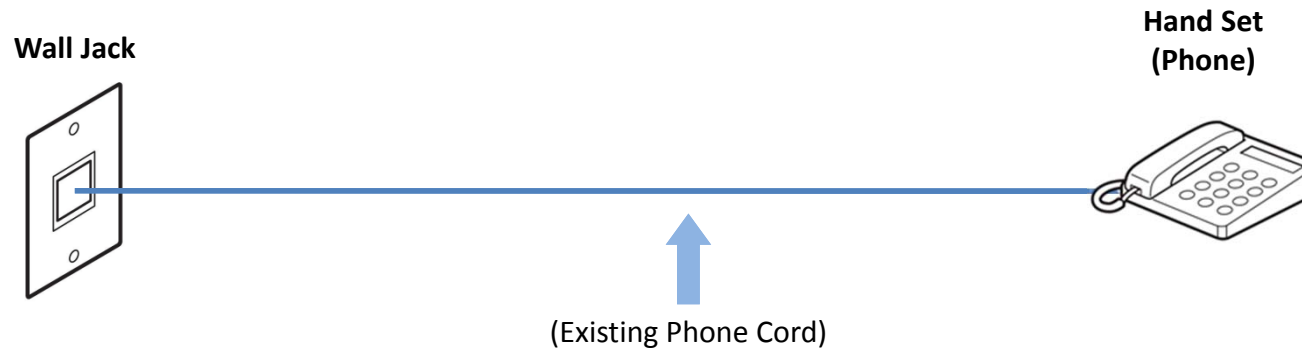


# Connecting The Phone Lines

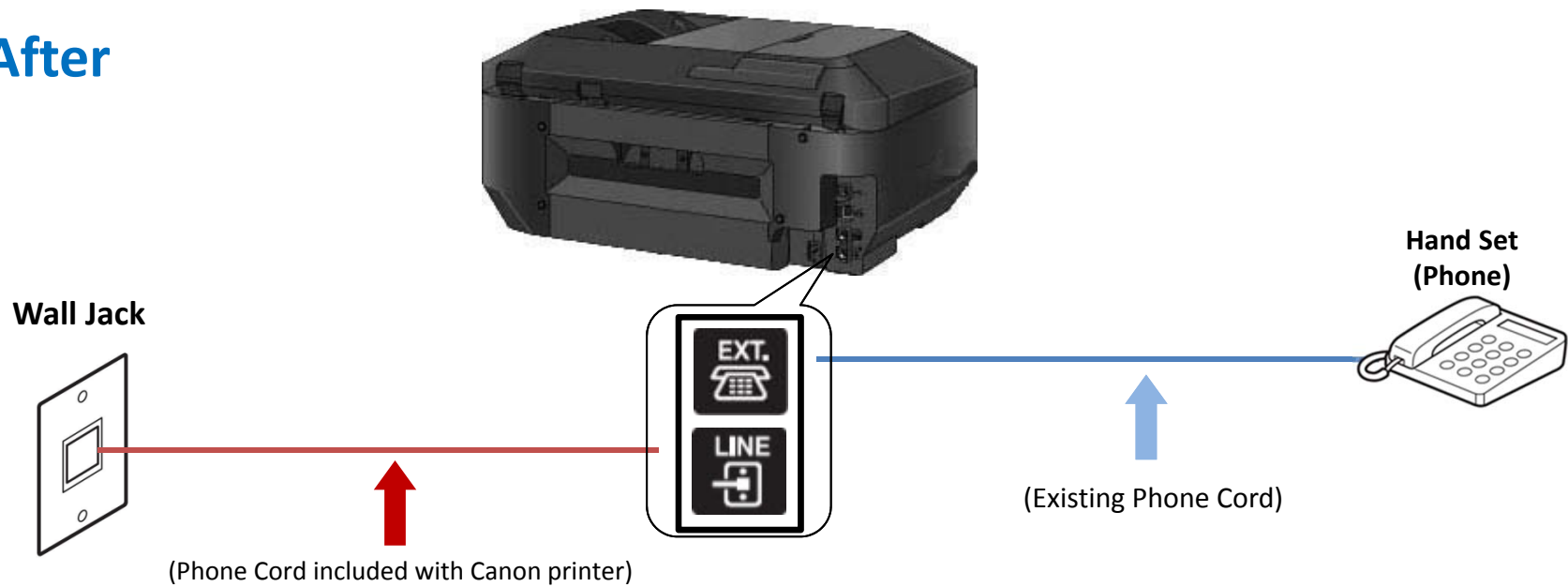


# Fax to Phone Line Connection

**Before**



**After**

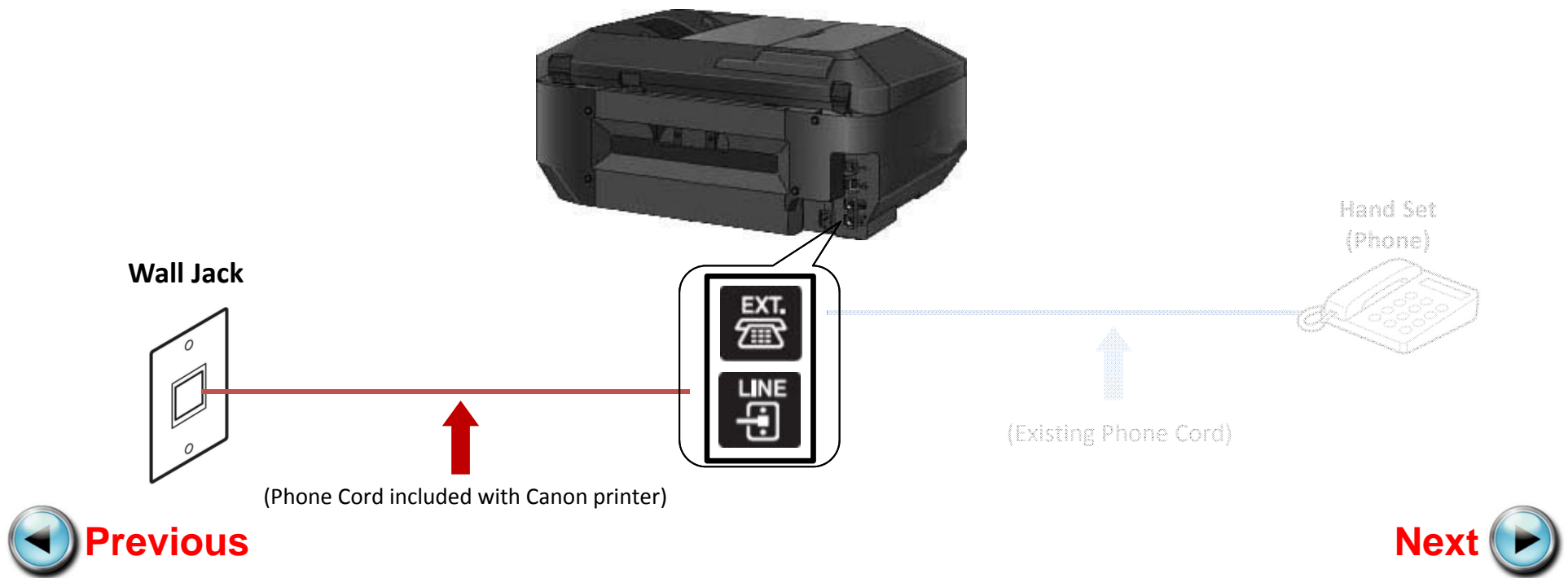


 **Previous**

**Next** 

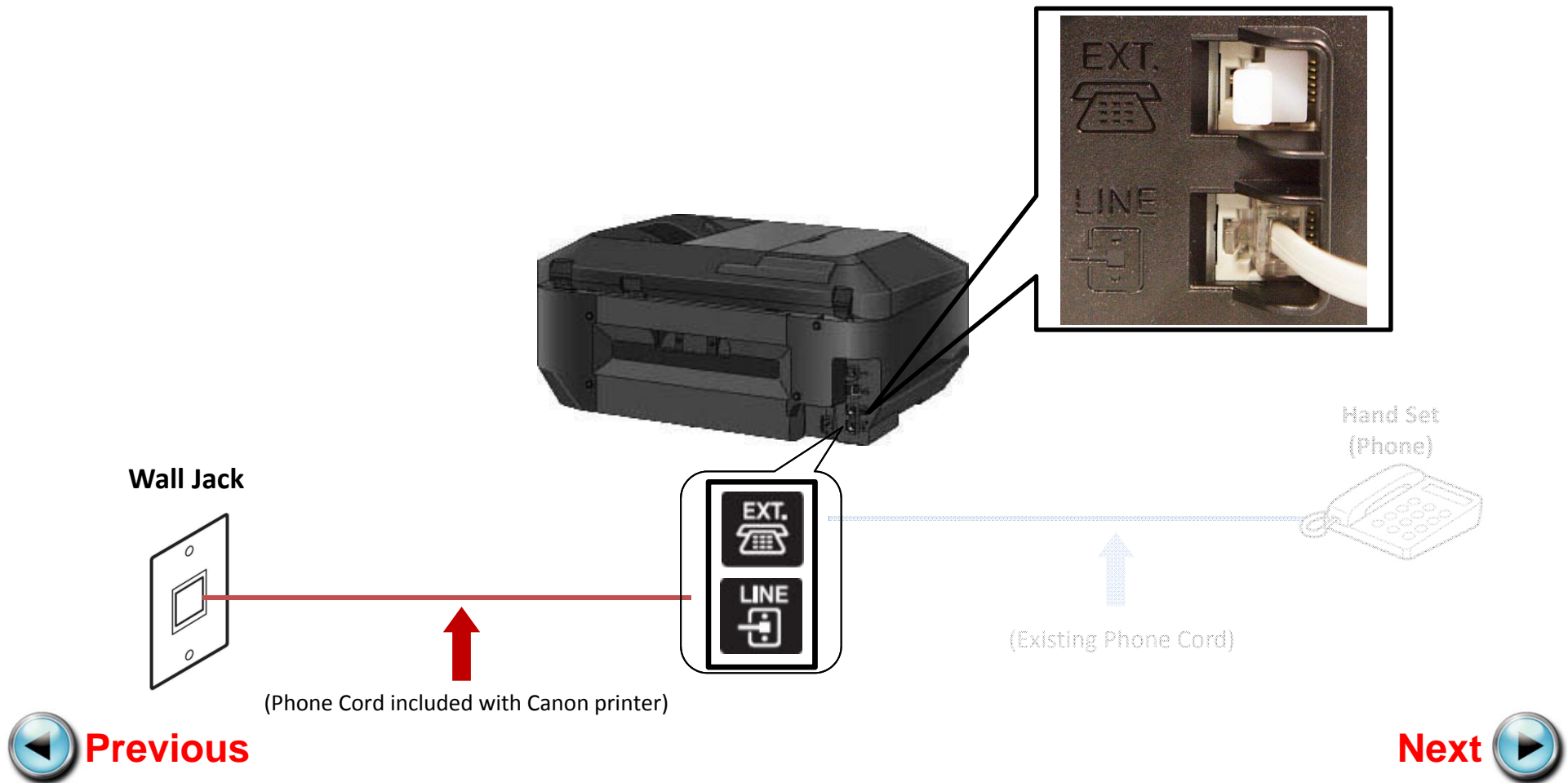
# Fax to Phone Line Connection

- Plug the provided phone cord into the wall jack



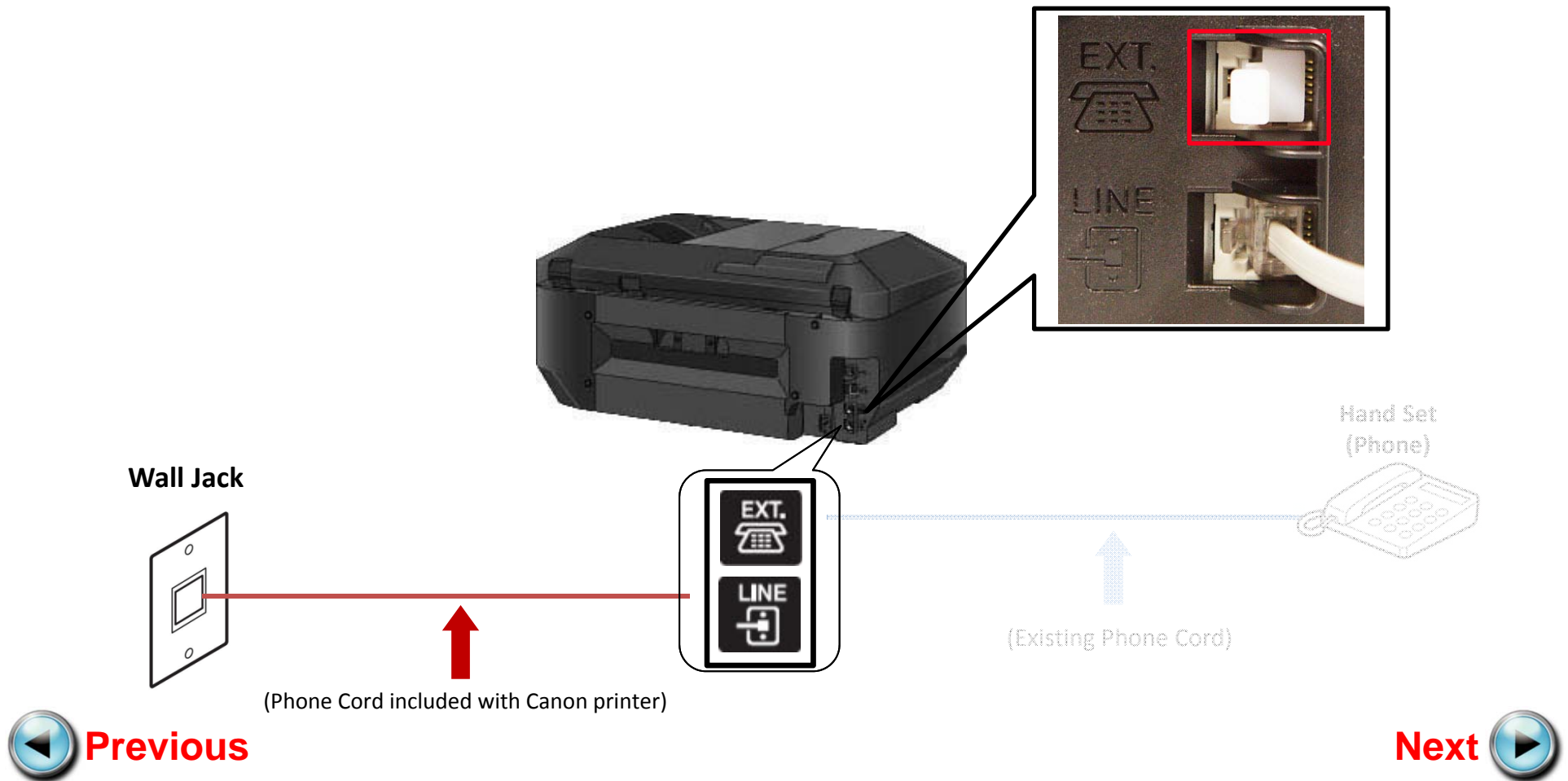
# Fax to Phone Line Connection

- Plug the provided phone cord into the “LINE” jack located on the rear of the multifunction



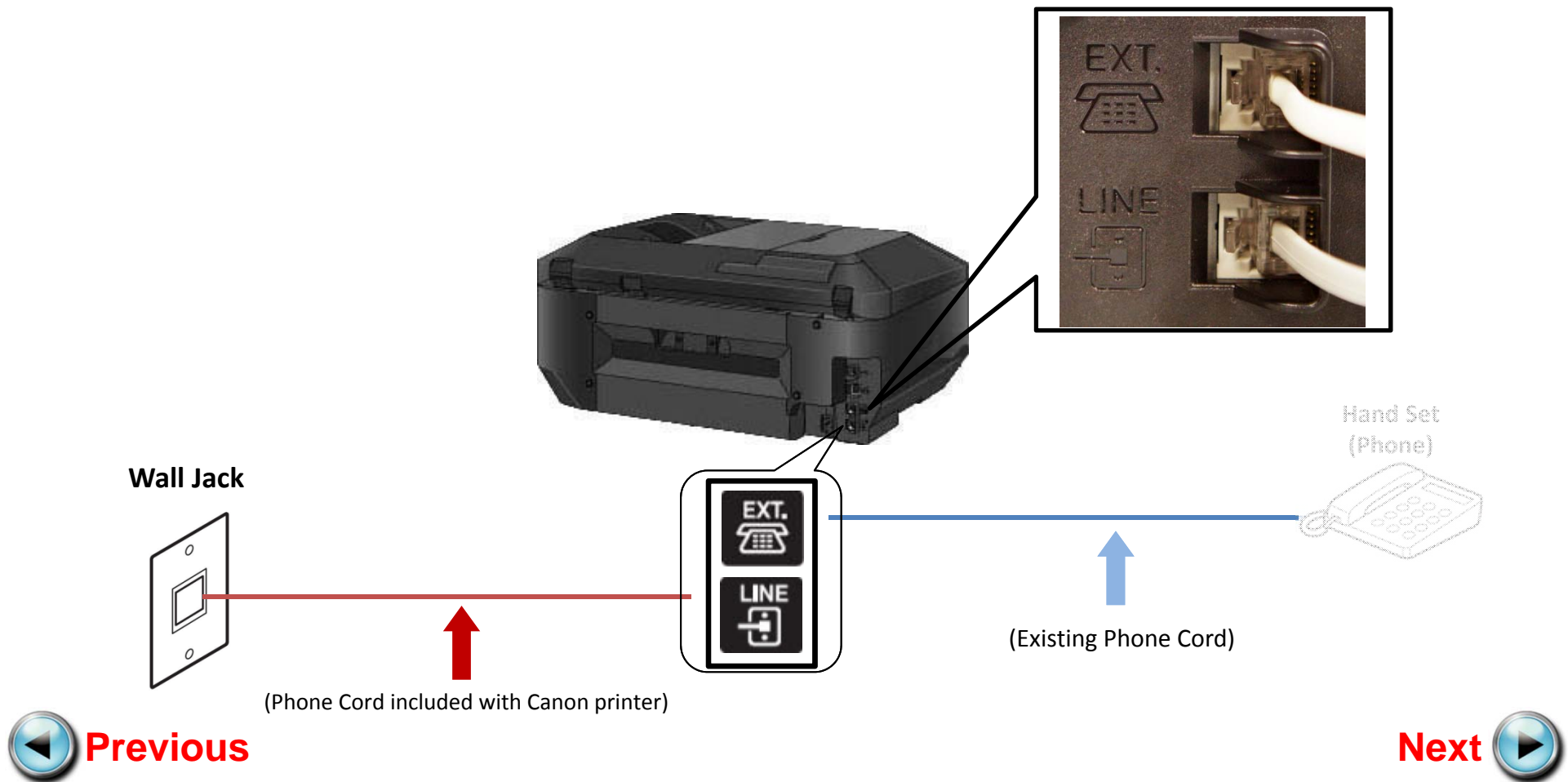
# Fax to Phone Line Connection

- Remove the white plug from the upper jack labeled "EXT."



# Fax to Phone Line Connection

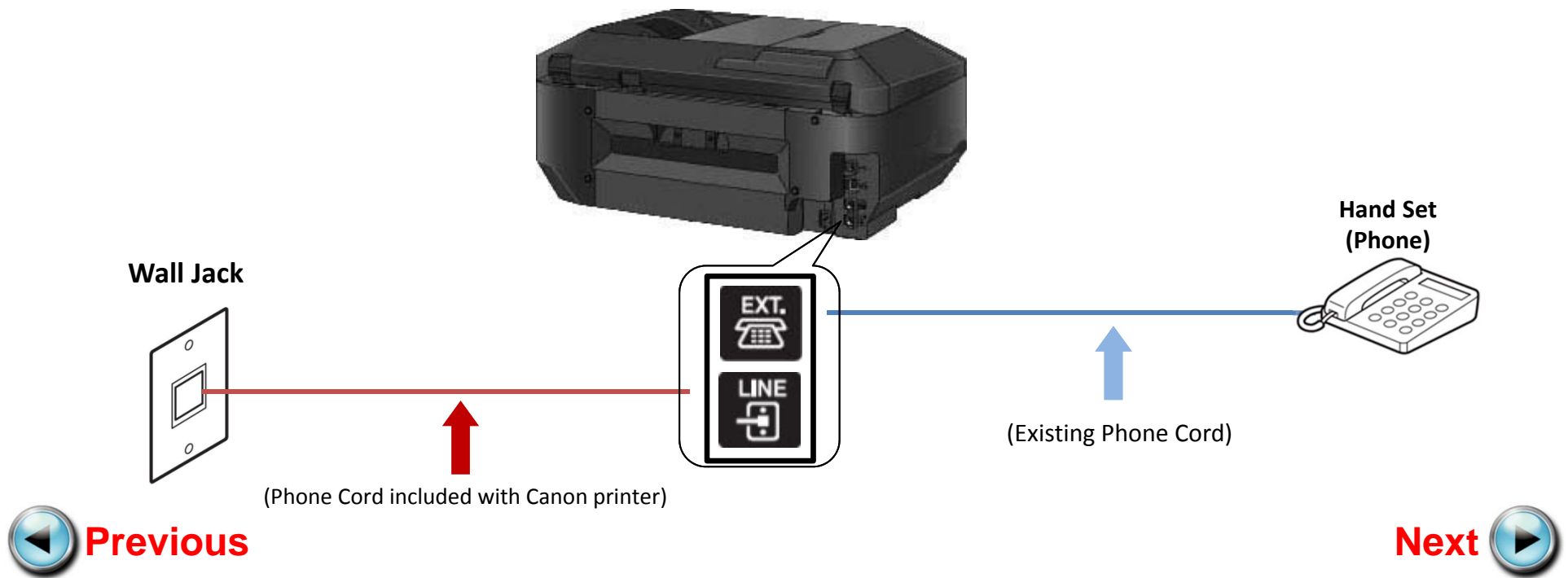
- Plug the second phone cord into the “EXT.” jack located on the rear of the multifunction





# Fax to Phone Line Connection

- Plug the second phone cord into the phone



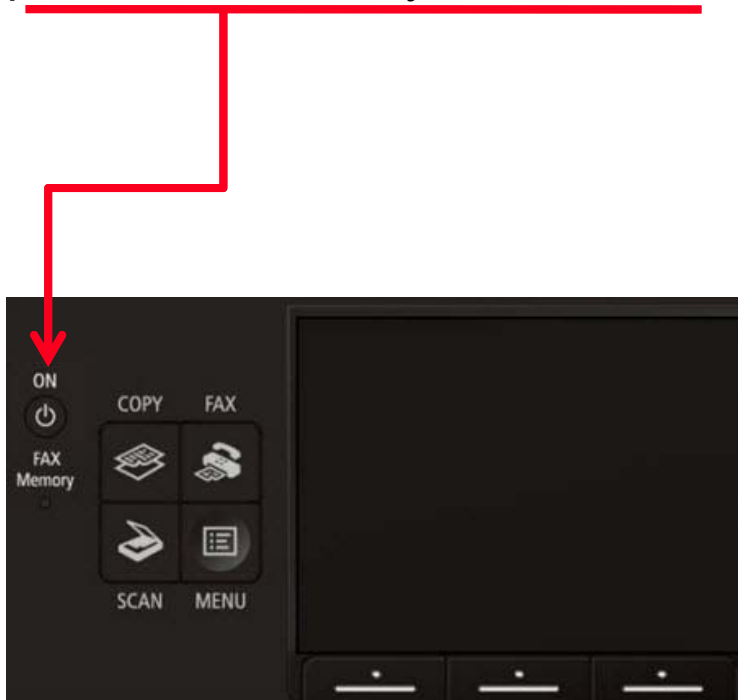


# Setting Up The Receive Mode



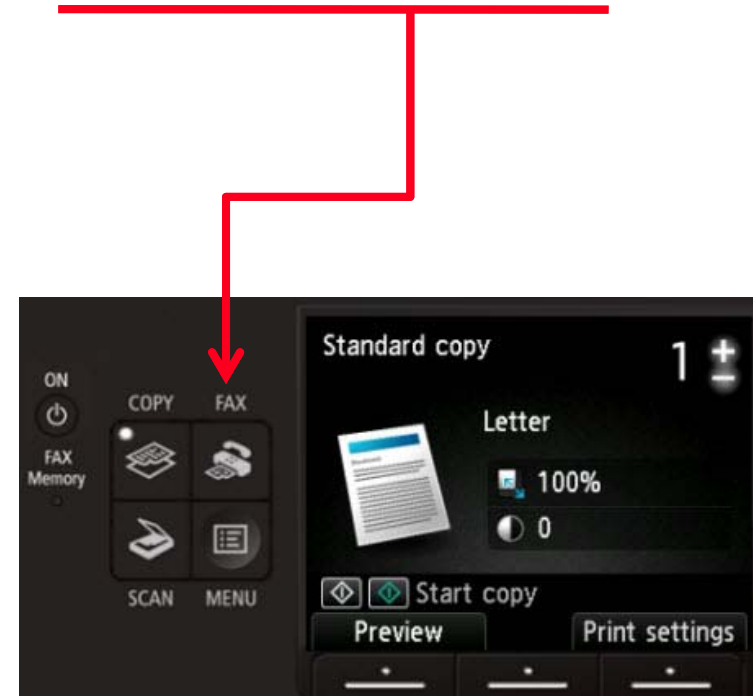
## Step 1

Turn on the MX722 by pressing the **ON** button if the machine is not powered on already.



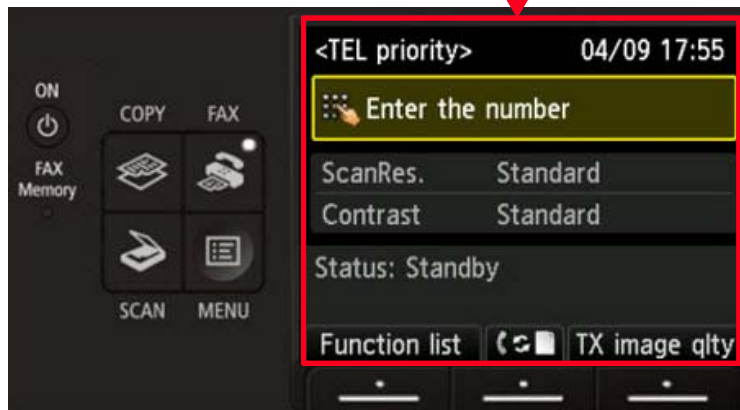
## Step 2

Press the **FAX** button.



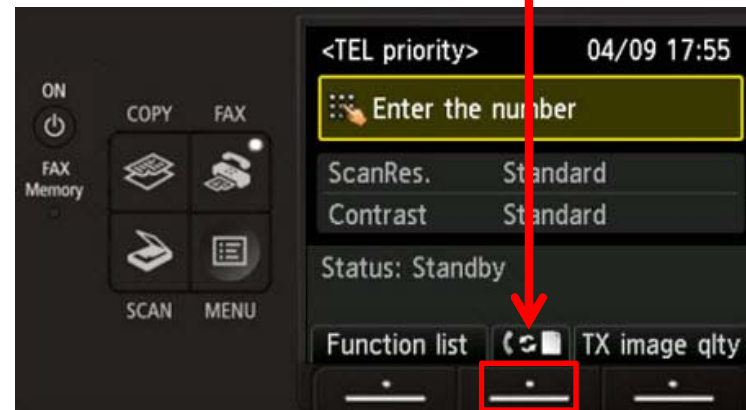
## Step 3

The fax standby screen will appear.



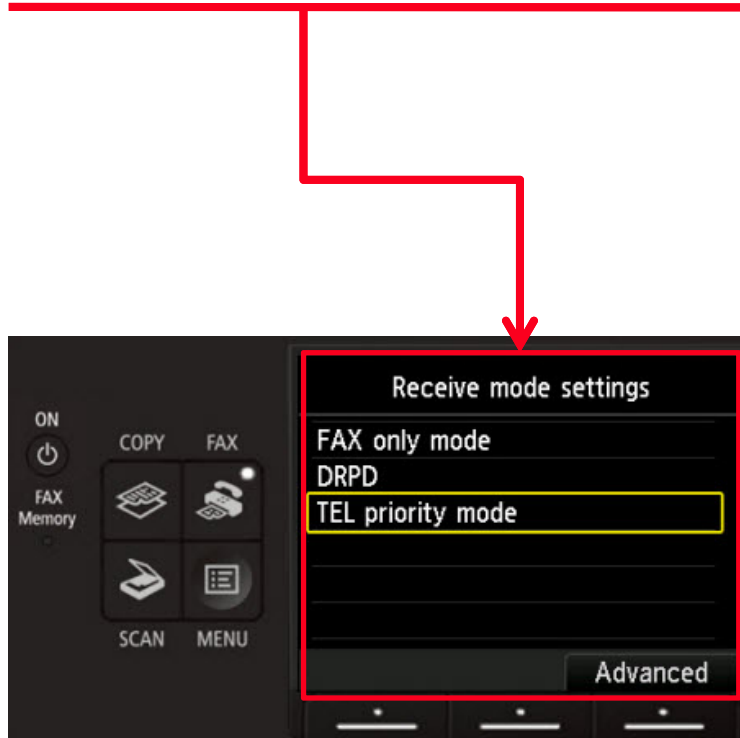
## Step 4

Press the center **FUNCTION** button.



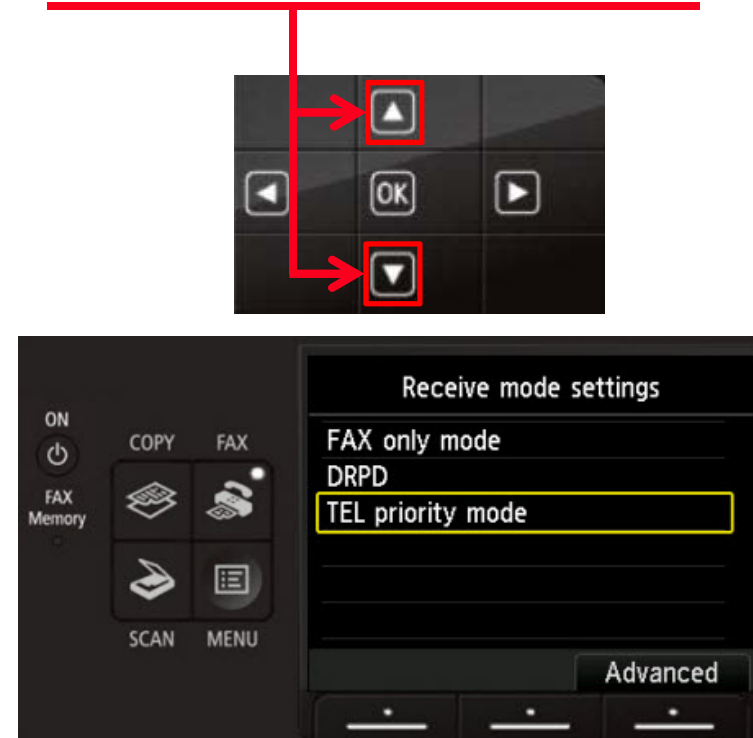
## Step 5

The **Receive mode settings** screen will appear.



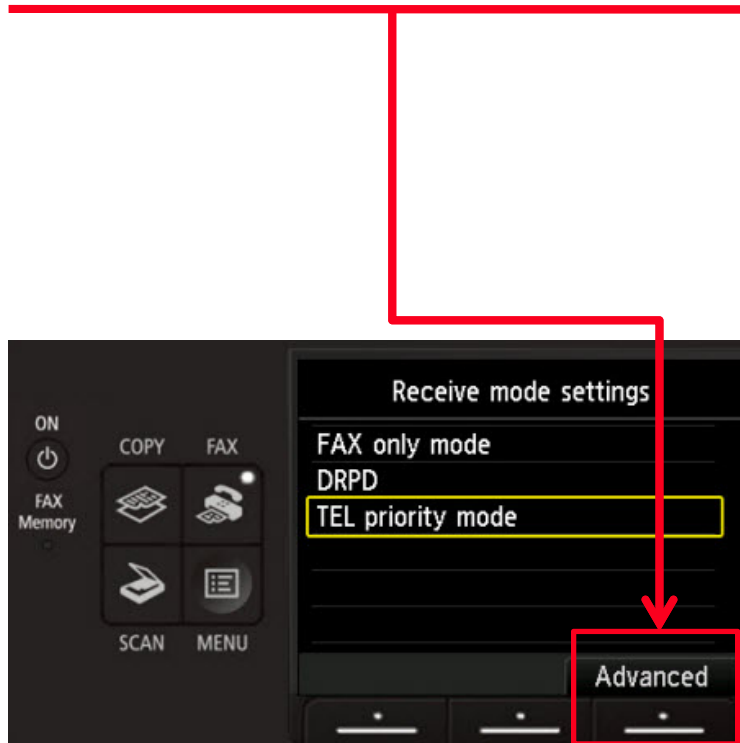
## Step 6

Use the **UP** or **Down** button to highlight “TEL priority mode”.



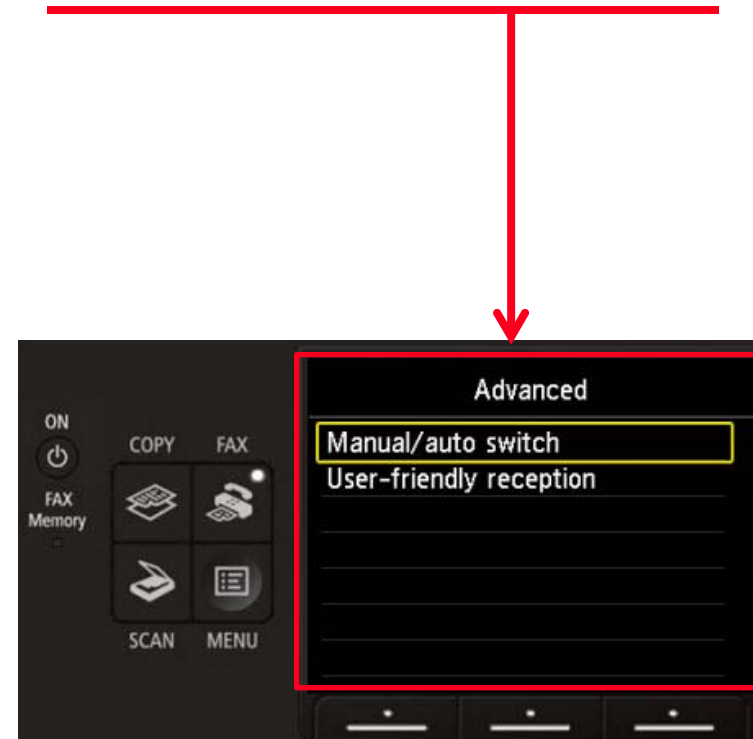
## Step 7

Press the right **FUNCTION** button under the **Advanced** label.



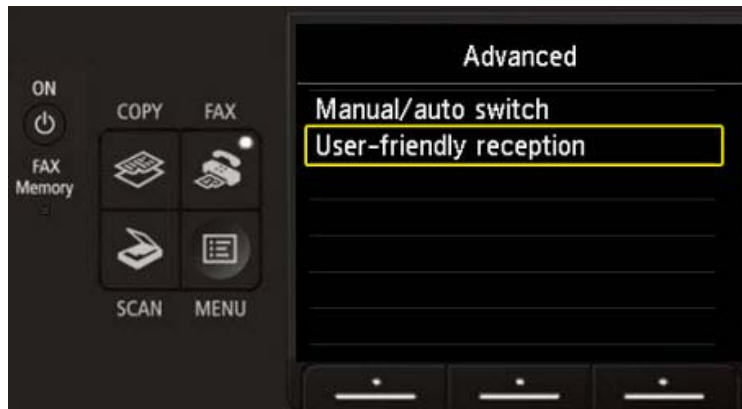
## Step 8

The **Advanced** screen will appear.



## Step 9

Use the **UP** or **DOWN** button to select “User-friendly reception”.



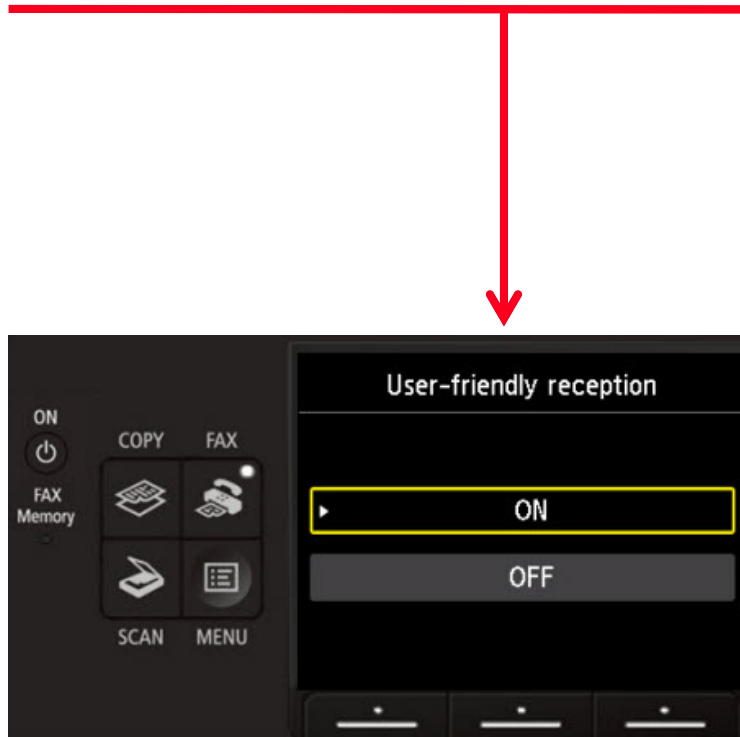
## Step 10

Press the **OK** button.



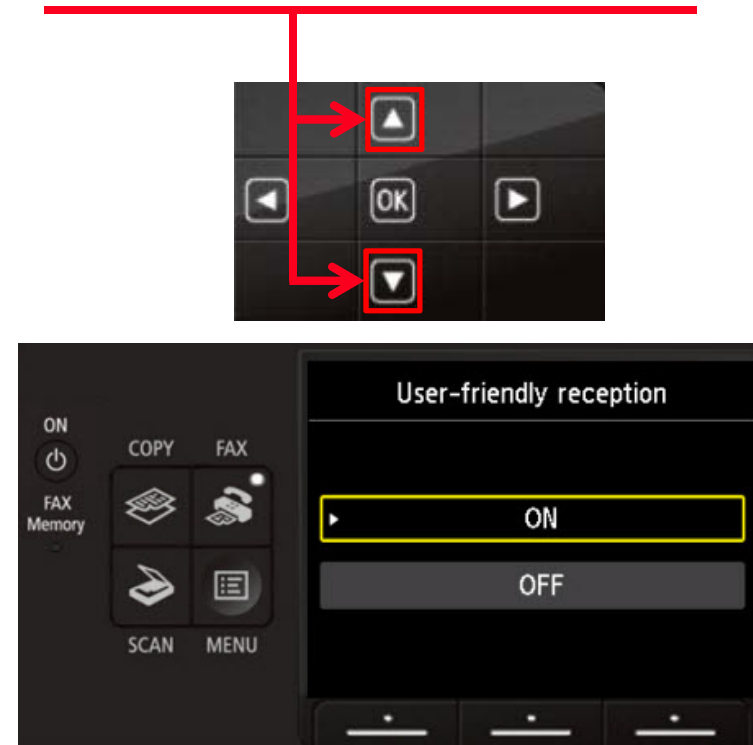
## Step 11

The **User-friendly reception** screen will appear.



## Step 12

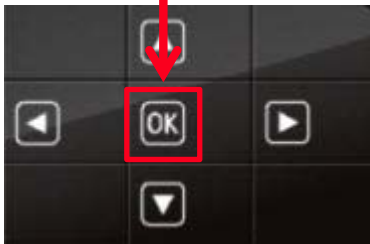
Use the **UP** or **DOWN** button to select "ON".





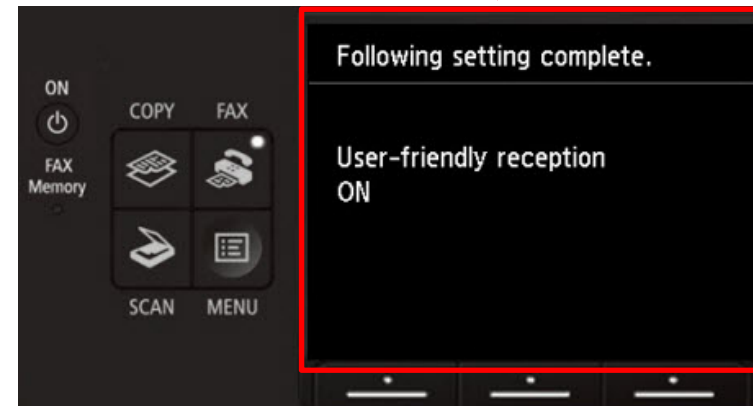
## Step 13

Press the **OK** button.



## Step 14

The screen will quickly flash “User-friendly reception ON”.



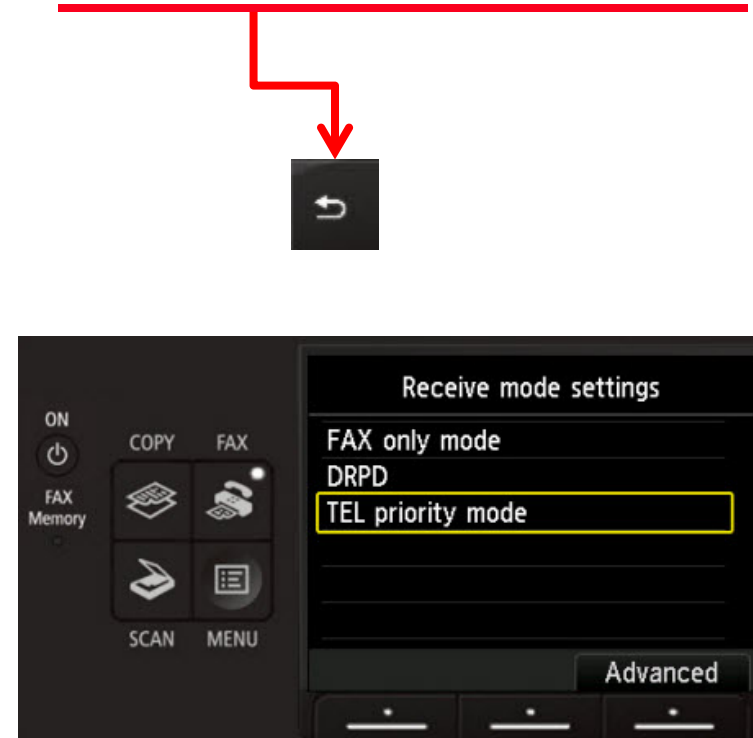
## Step 15

The screen will return to the **Advanced** window.



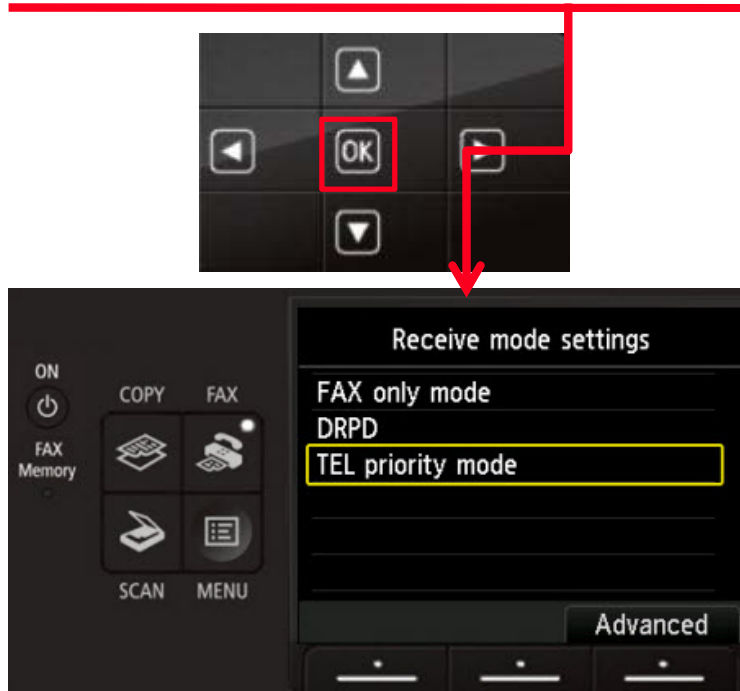
## Step 16

Press the **Back** button to return to **Receive mode settings** window.



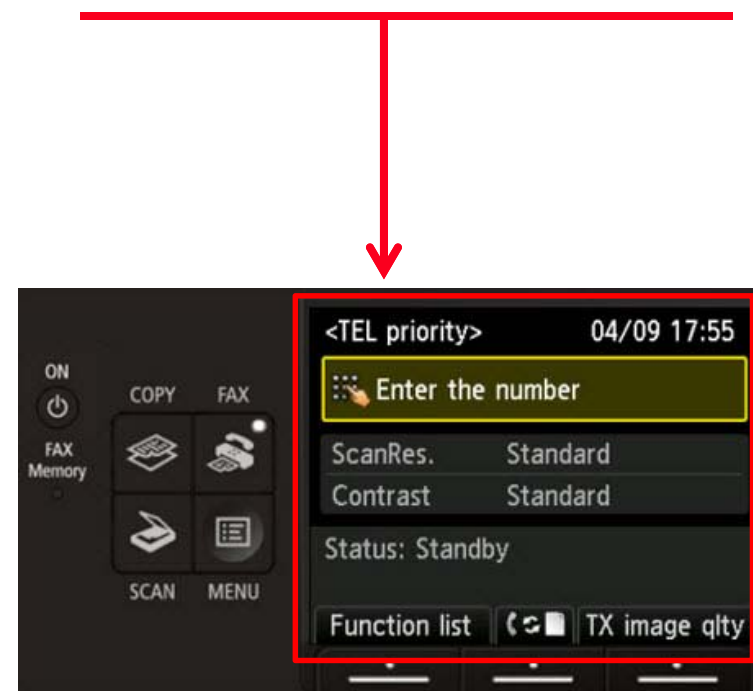
## Step 17

Confirm “TEL priority mode” is highlighted and then press the **OK** button.



## Step 18

You will return to the “Fax standby screen” and ‘TEL priority’ will appear on the screen.



# Receiving A Fax

To receive a fax:

- Pick up the handset on the phone connected to the MX722.
- Listen for fax tones.
- When the tones stop hang up the handset.
- The MX722 will receive the fax document.

**IMPORTANT:** In order to receive a fax, you must pick up the handset on a phone that is connected to the multifunction.

