



Setting Up Your MX522 In Default Mode (Tel Priority Mode) With An Answering Machine



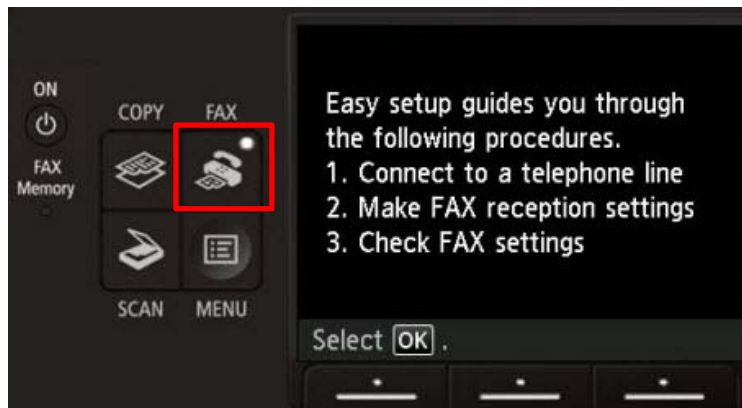
Fax Easy Setup

Click [Next](#) to step through this image-friendly version of **Fax Easy Setup**.

If you started **Fax Easy Setup**, on the fax machine's operation panel, and prefer to go through this image-friendly version...

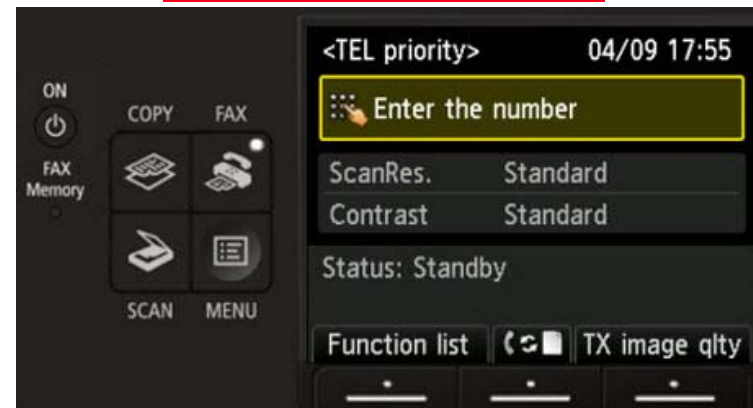
Step 1

Press the **FAX** button at any screen to go to fax standby mode.



Step 2

Click [Next](#) to proceed through the setup.





Connecting The Phone Lines



Connecting Your Phone/Answering Machine

Is your answering machine built into your phone?

YES

Click Here or Go To Page 13

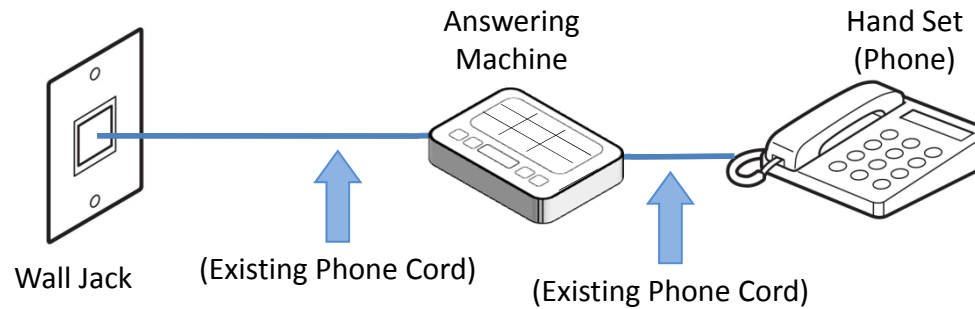
NO

Click the Next Button

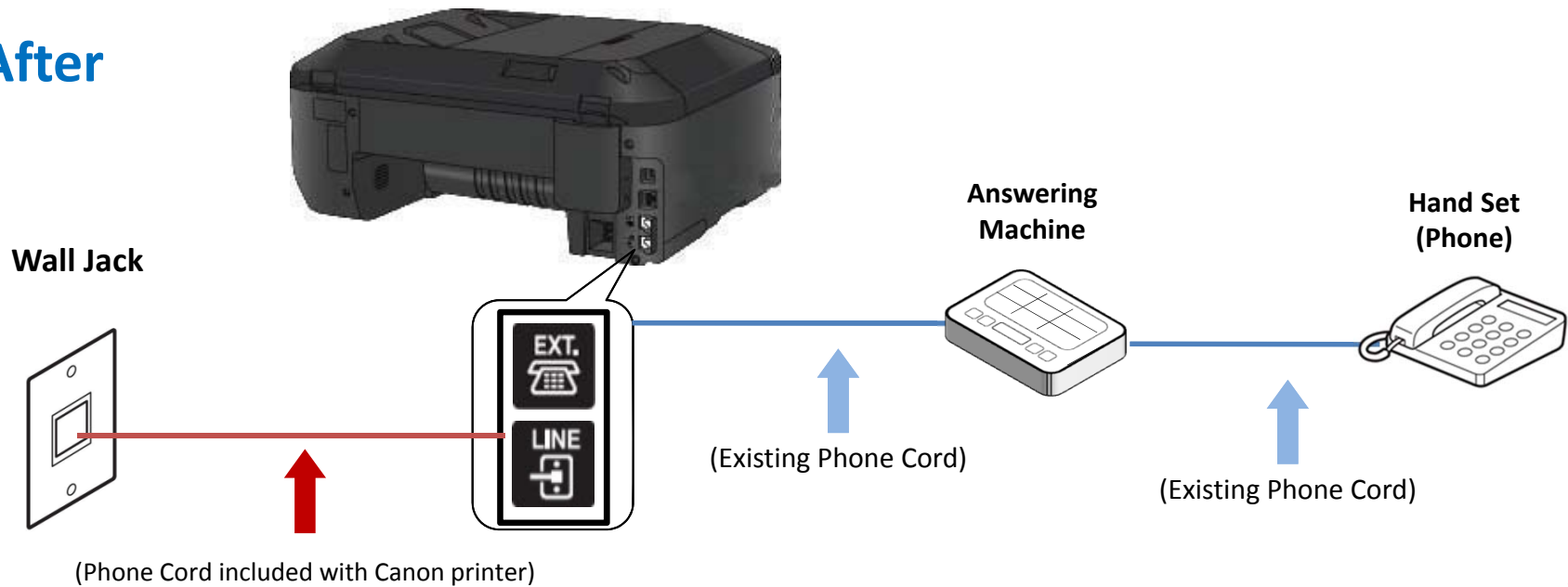


Fax to Phone Line Connection

Before

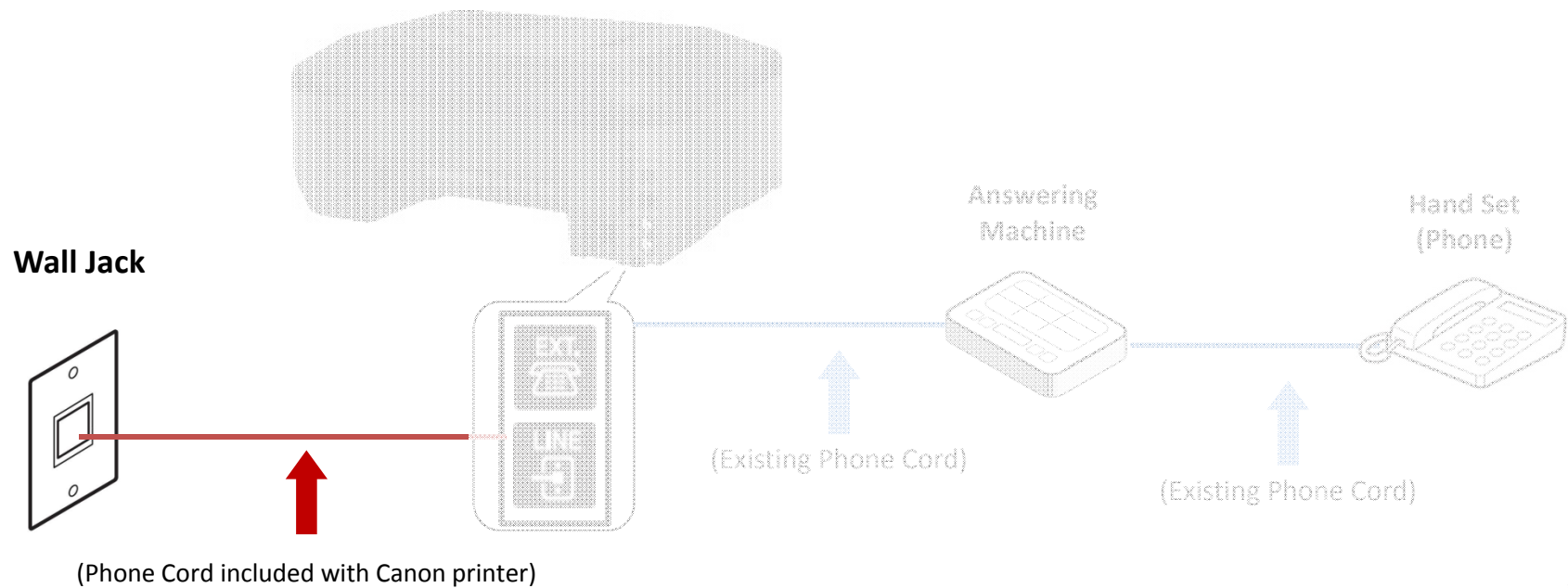


After



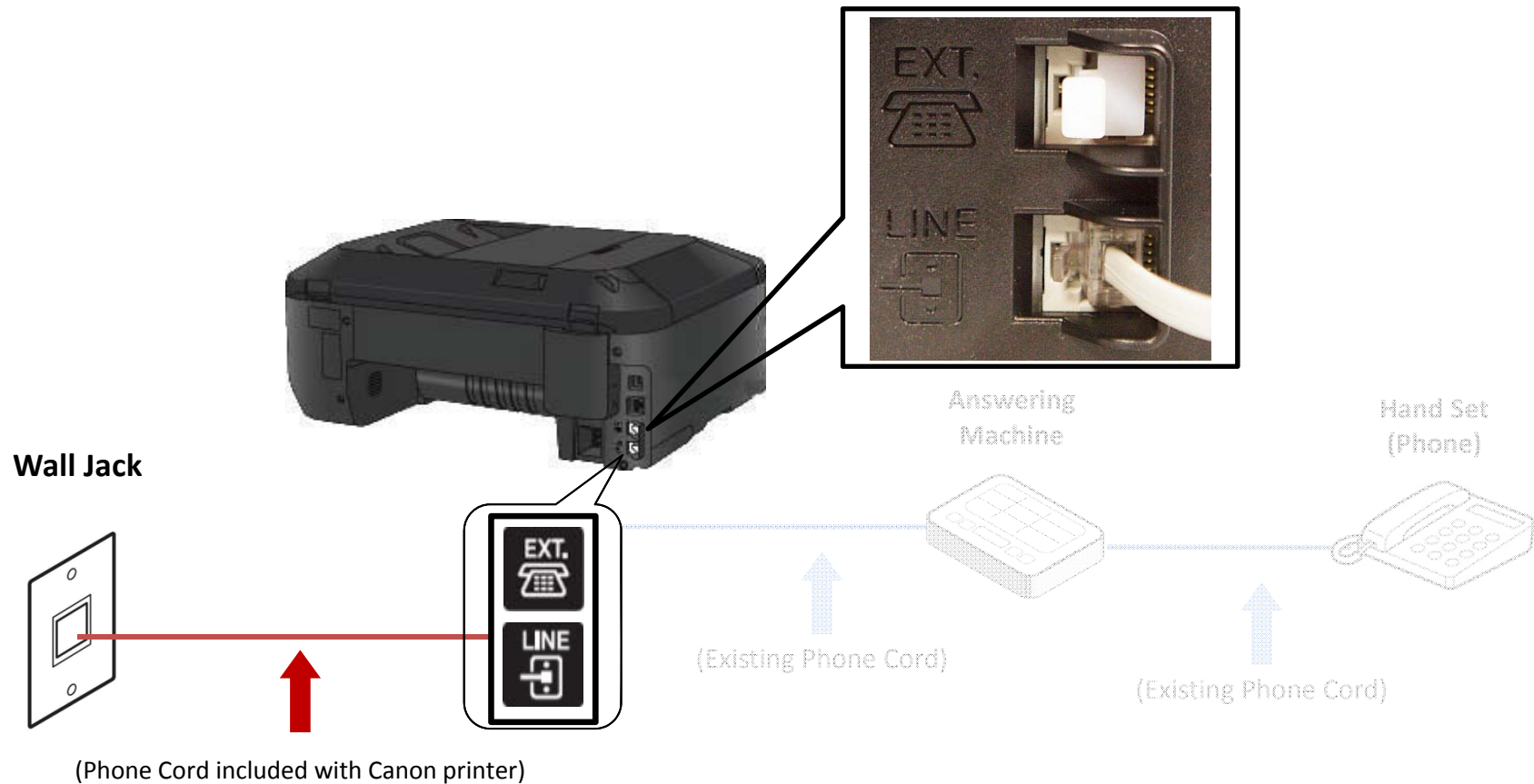
Fax to Phone Line Connection

- Plug the provided phone cord into the wall jack



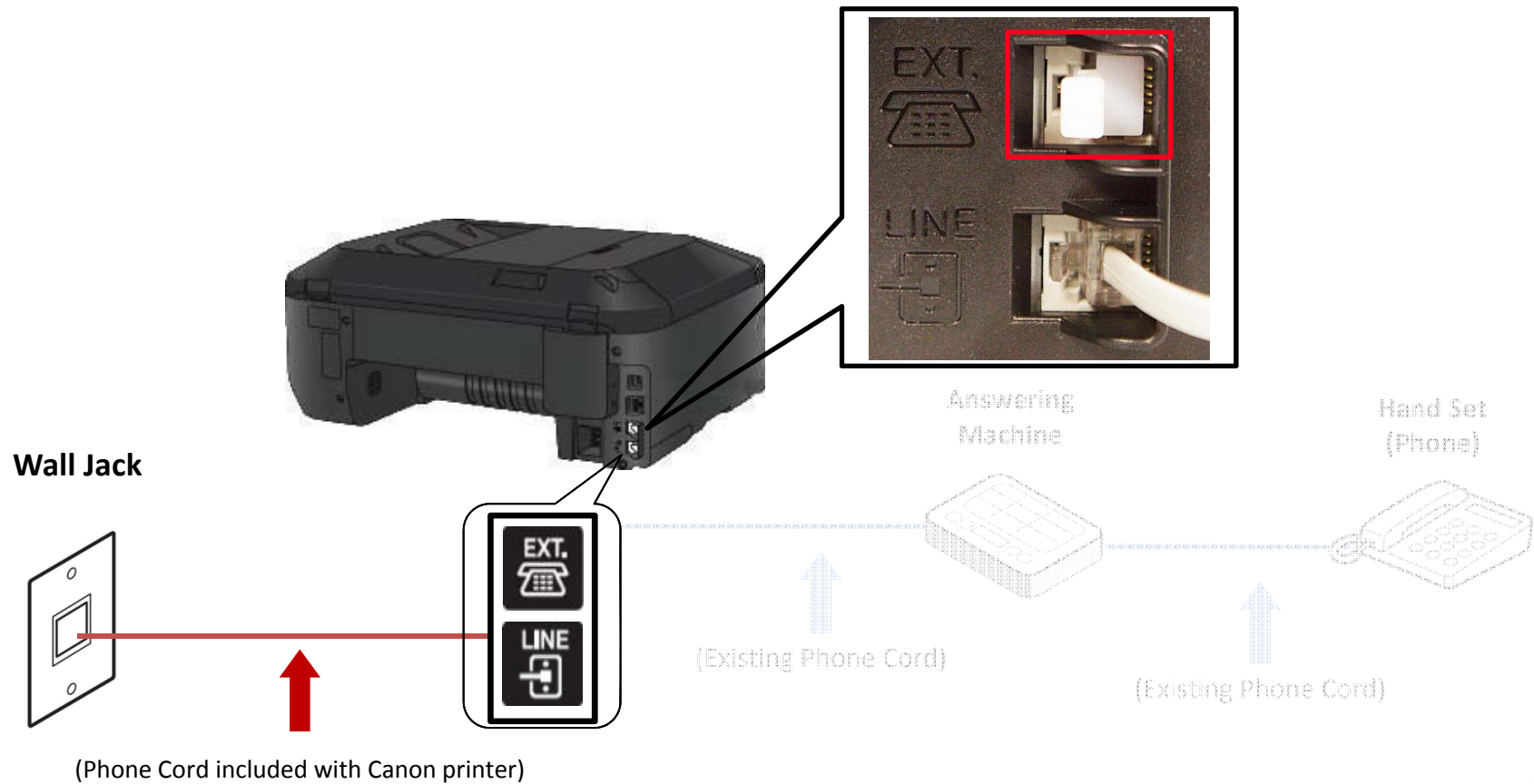
Fax to Phone Line Connection

- Plug the provided phone cord into the “LINE” jack located on the rear of the multifunction.



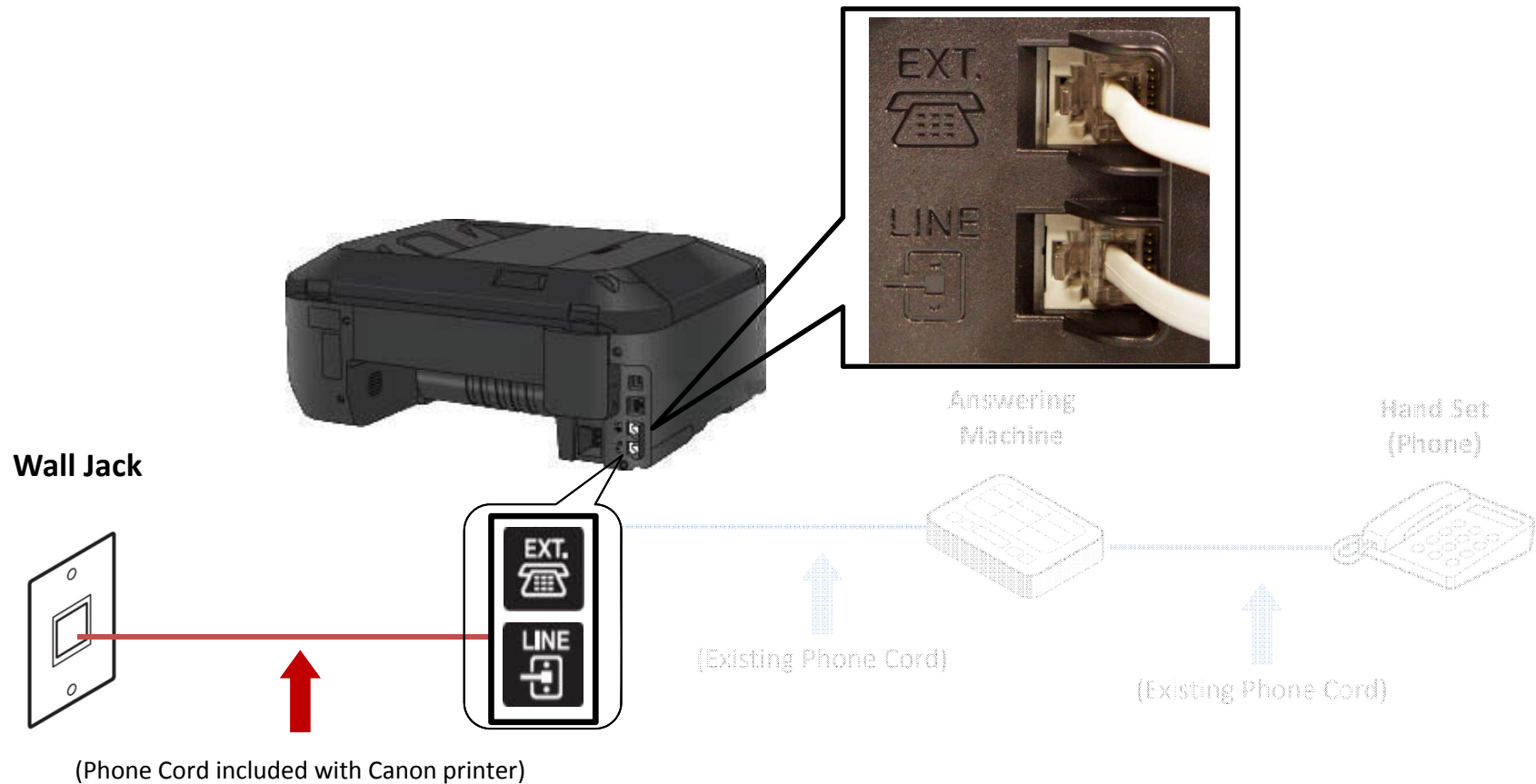
Fax to Phone Line Connection

- Remove the white plug from the upper jack labeled "EXT."



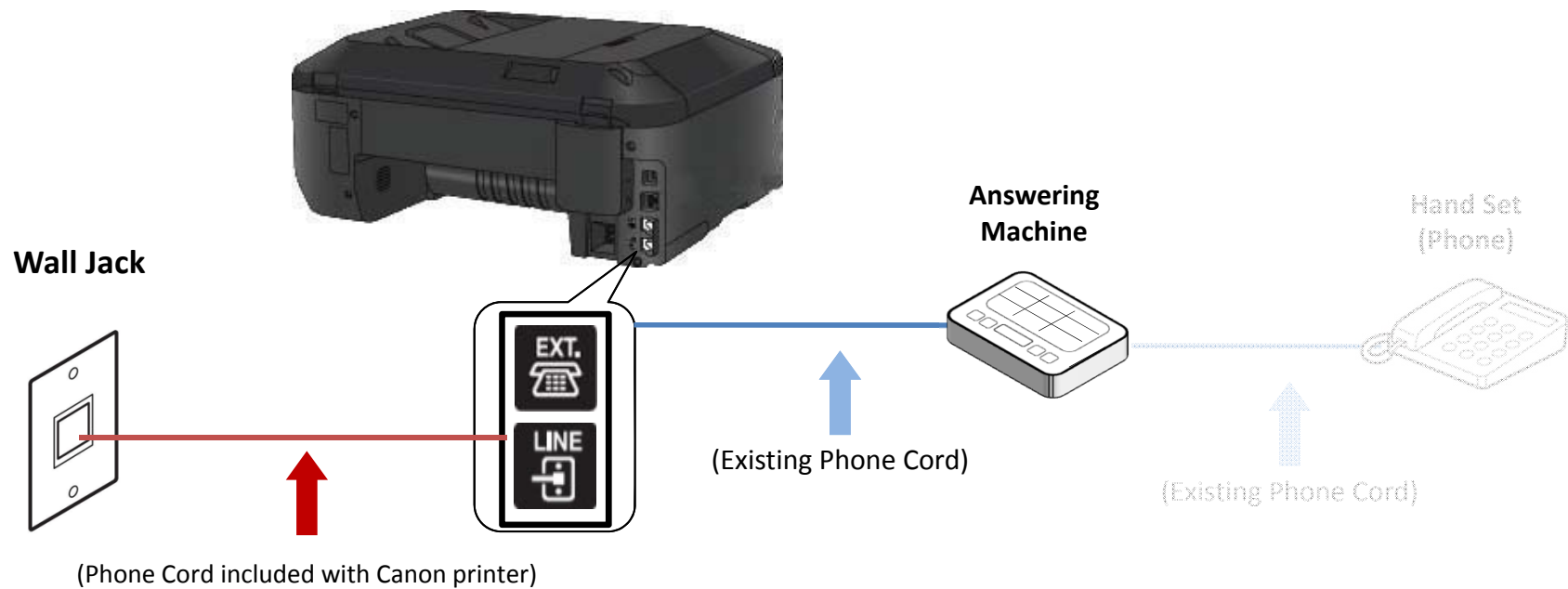
Fax to Phone Line Connection

- Plug the second phone cord into the “EXT.” jack located on the rear of the multifunction



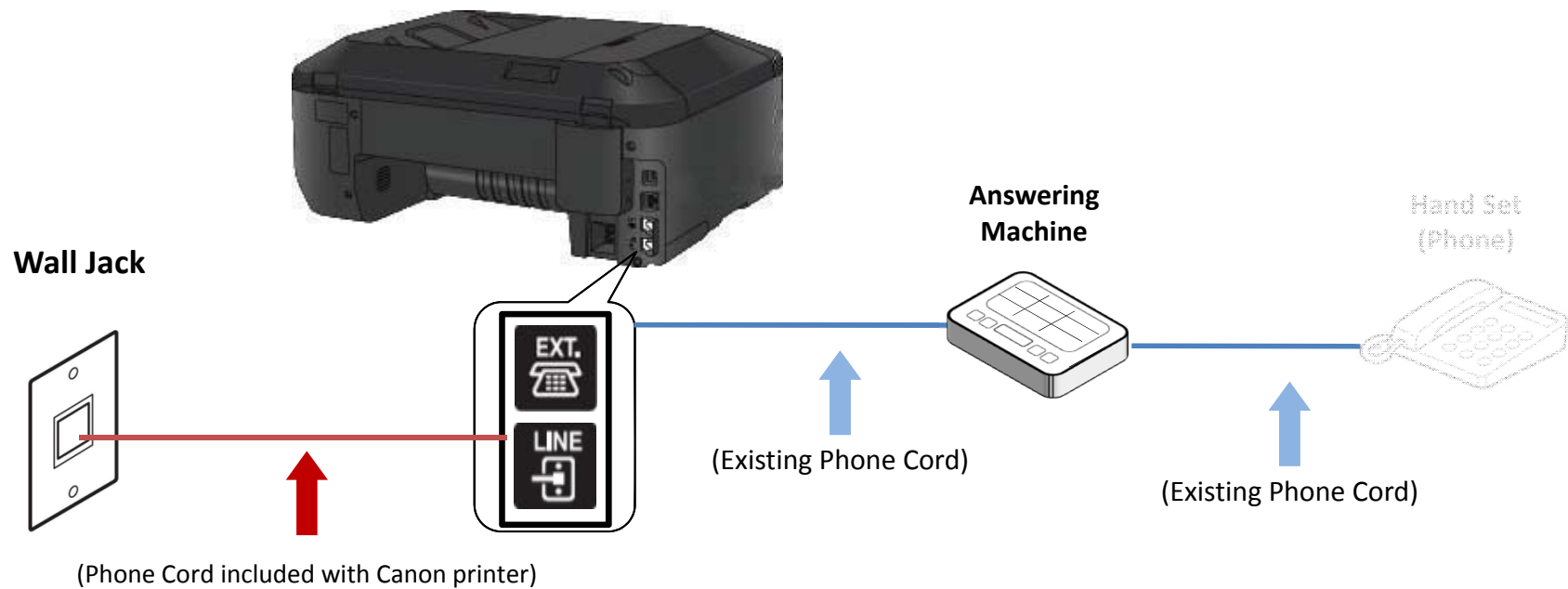
Fax to Phone Line Connection

- Plug the second phone cord into the answering machine.



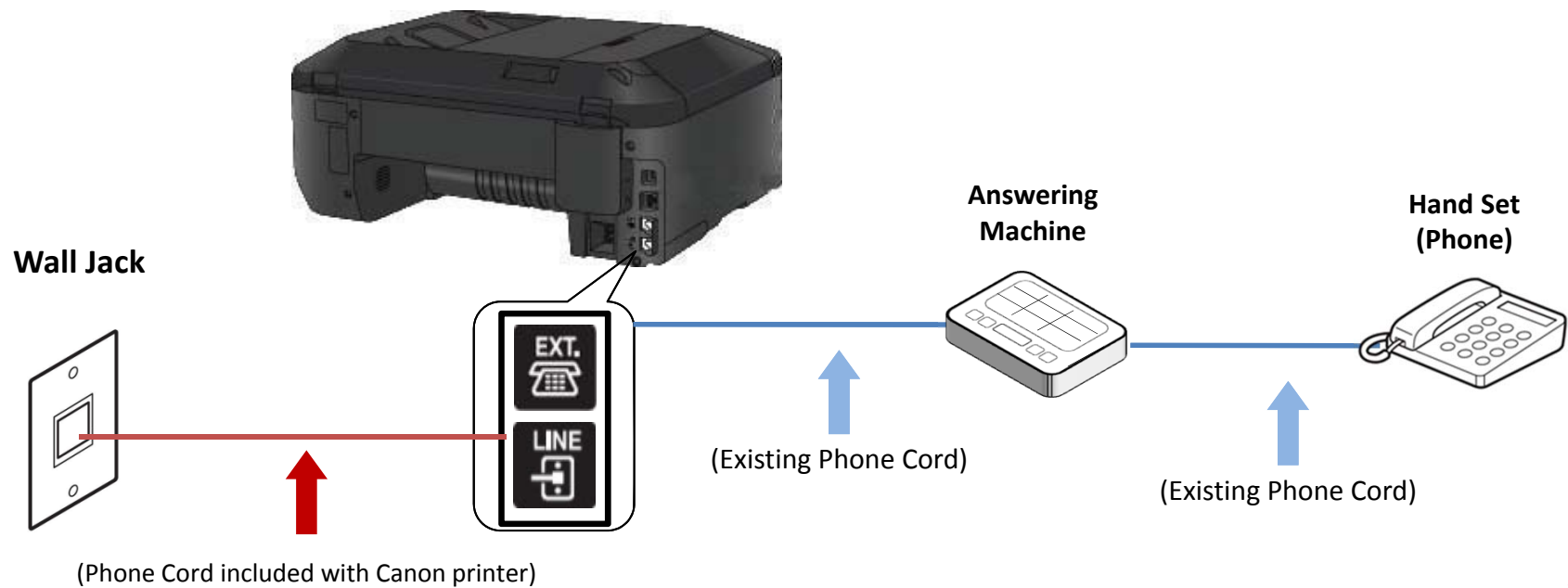
Fax to Phone Line Connection

- Plug the third phone cord into the answering machine.



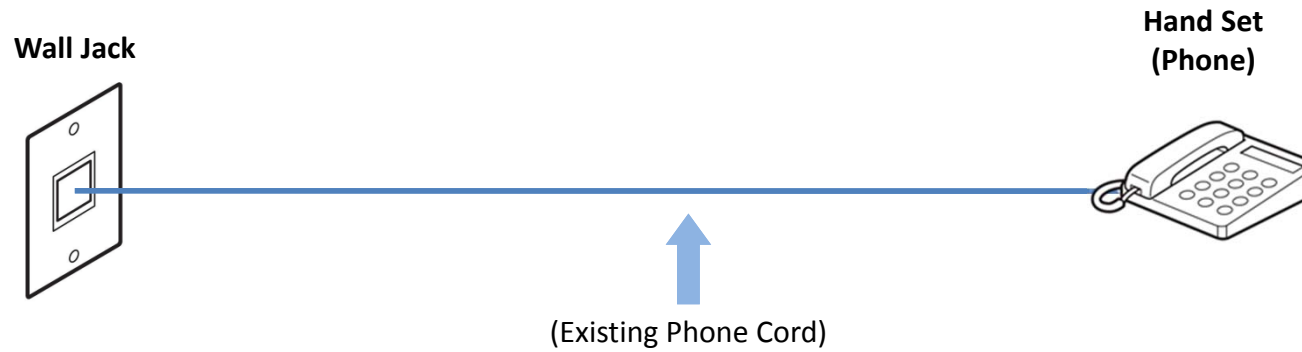
Fax to Phone Line Connection

- Plug the third phone cord into the phone.

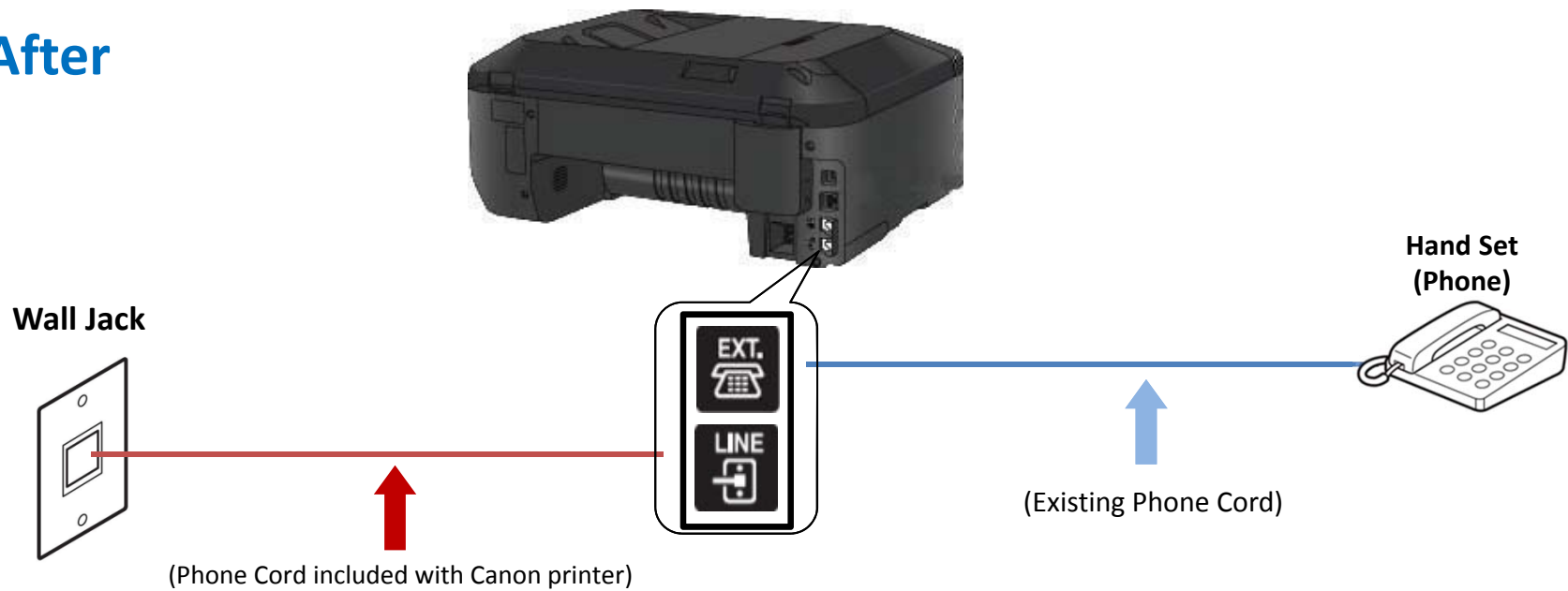


Fax to Phone Line Connection

Before



After

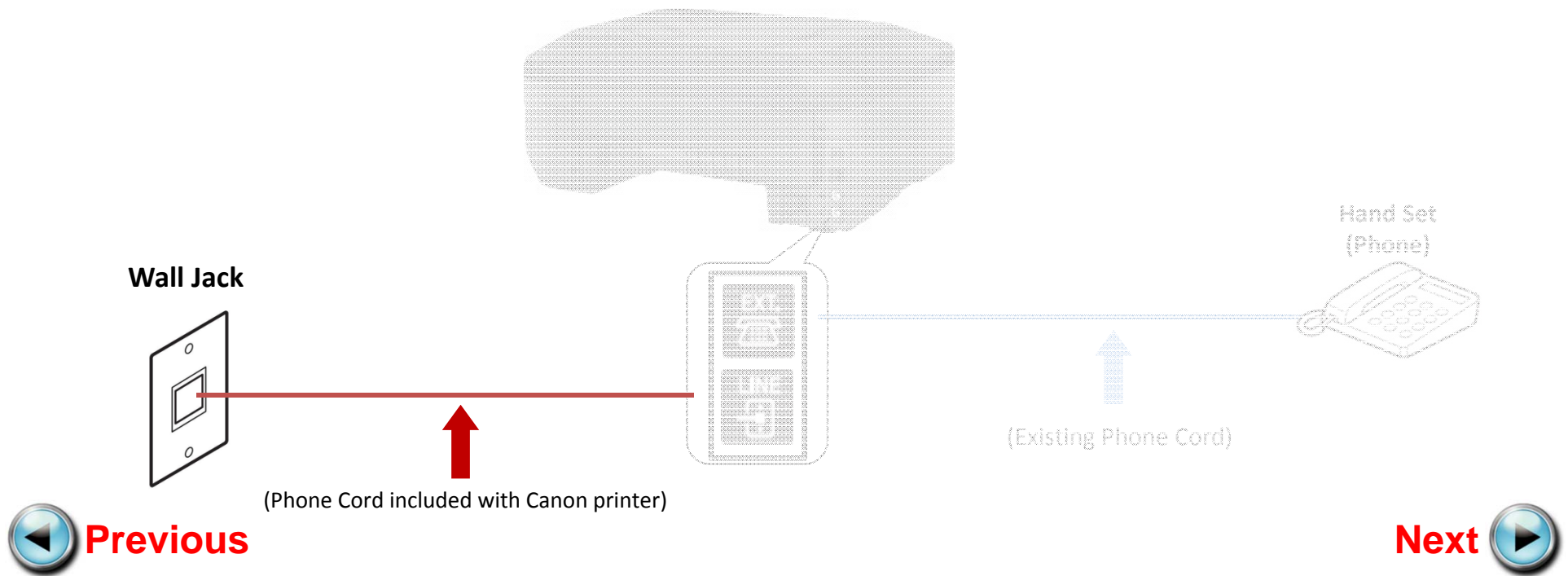


 **Previous**

Next 

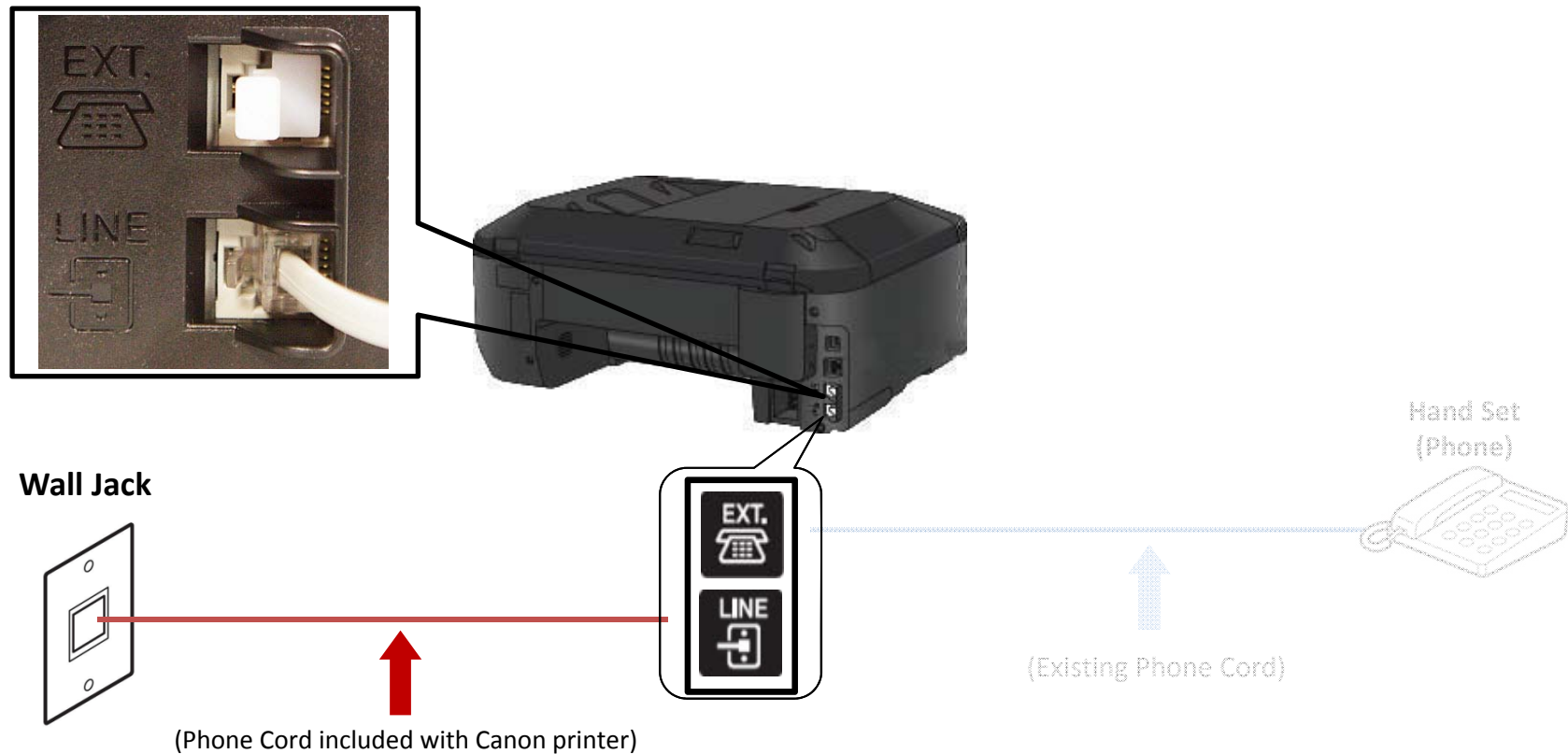
Fax to Phone Line Connection

- Plug the provided phone cord into the wall jack



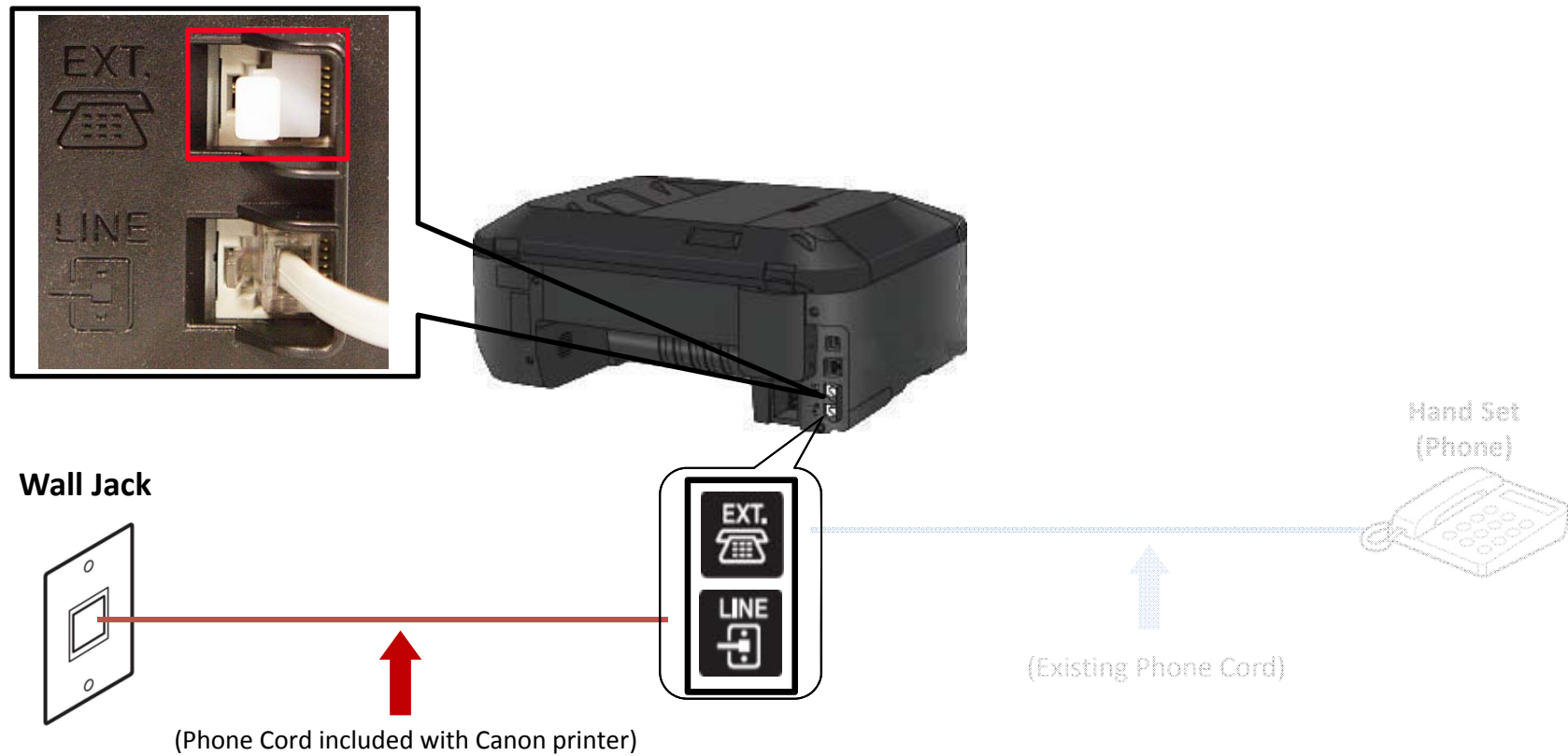
Fax to Phone Line Connection

- Plug the provided phone cord into the “LINE” jack located on the rear of the multifunction



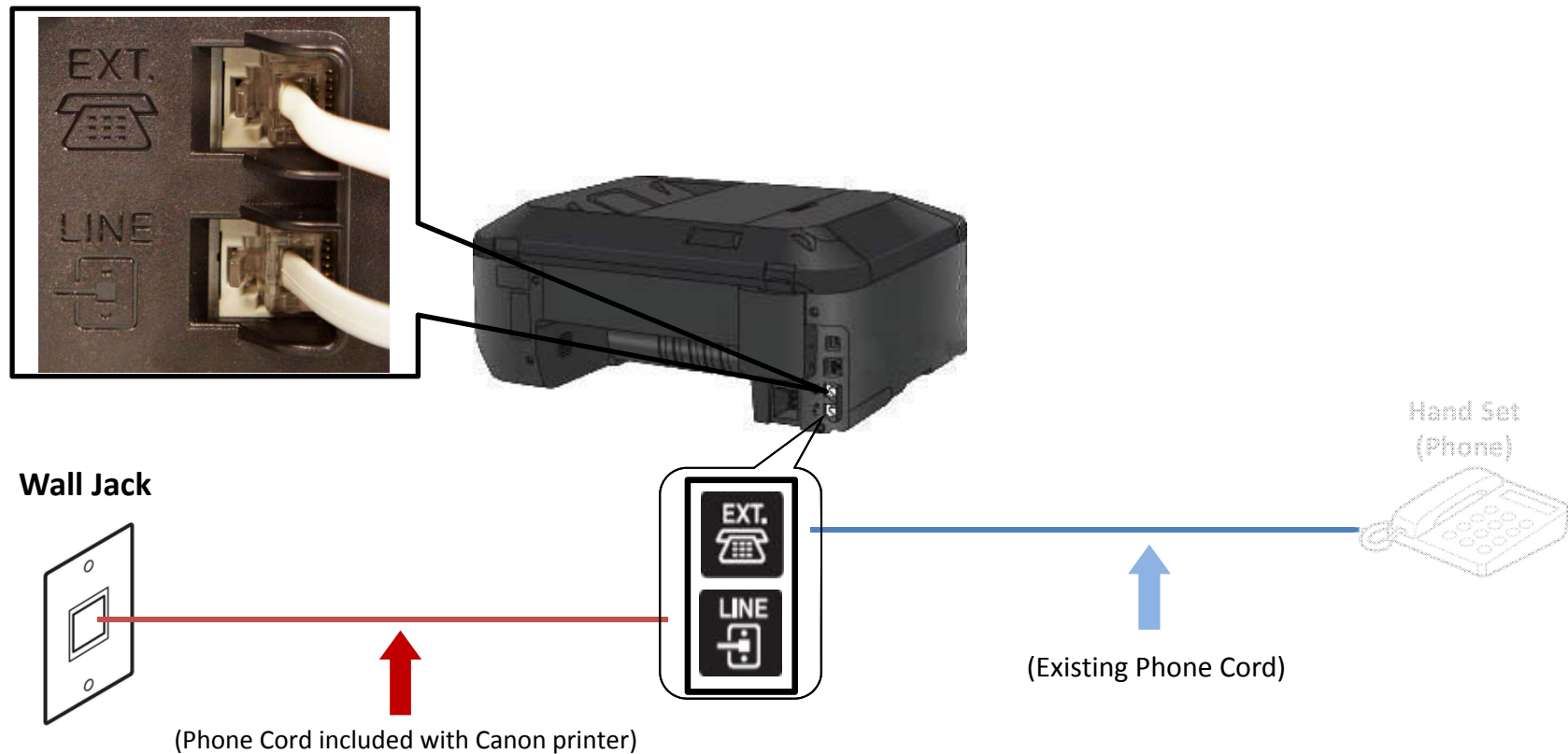
Fax to Phone Line Connection

- Remove the white plug from the upper jack labeled "EXT."



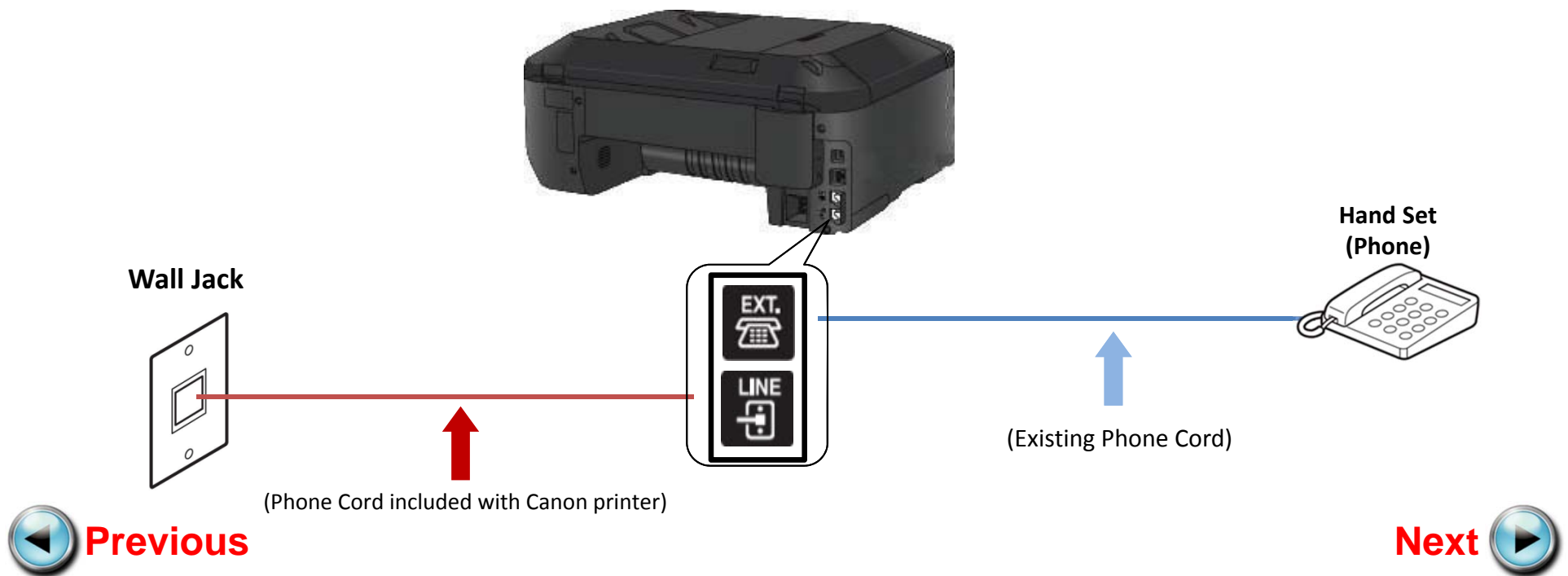
Fax to Phone Line Connection

- Plug the second phone cord into the “EXT.” jack located on the rear of the multifunction



Fax to Phone Line Connection

- Plug the second phone cord into the phone



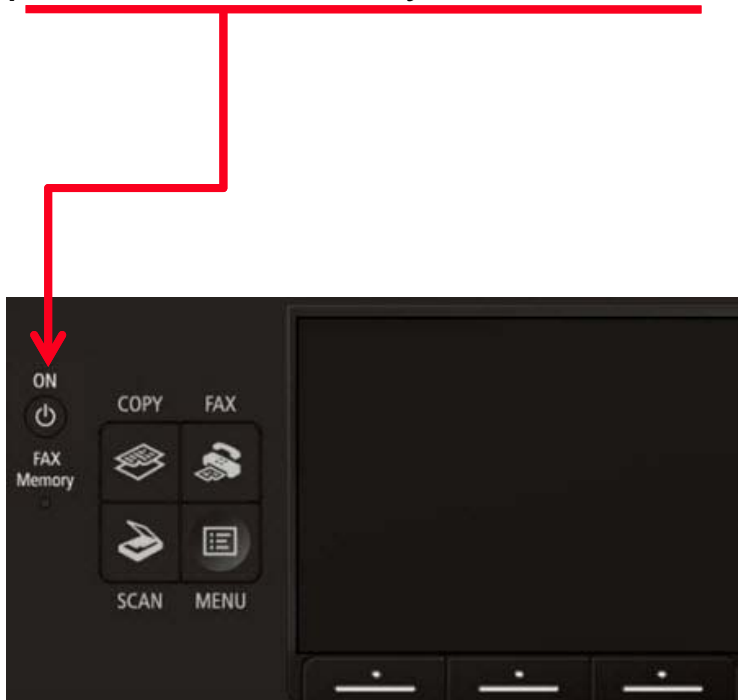


Setting Up The Receive Mode



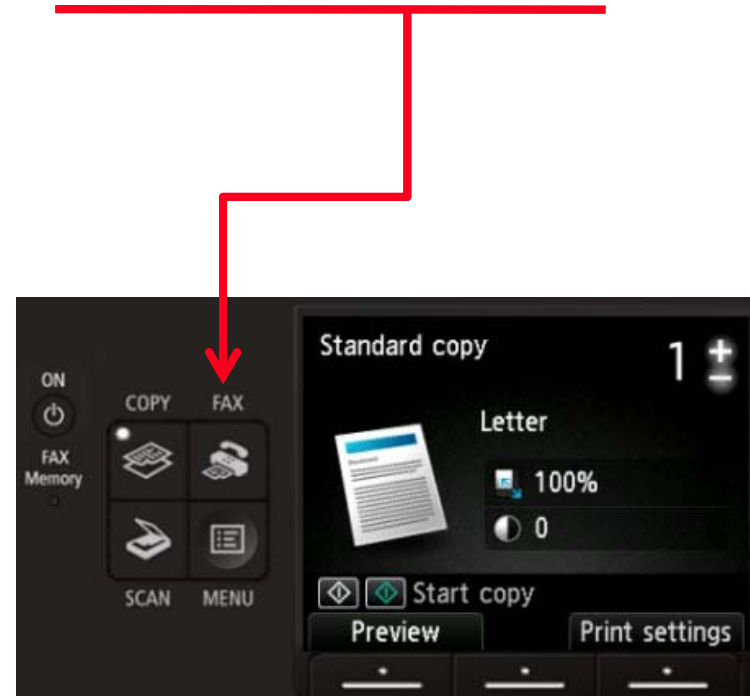
Step 1

Turn on the MX522 by pressing the **ON** button if the machine is not powered on already.



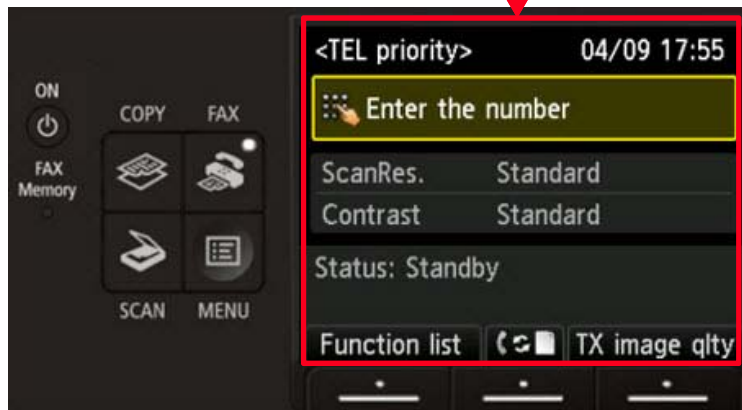
Step 2

Press the **FAX** button.



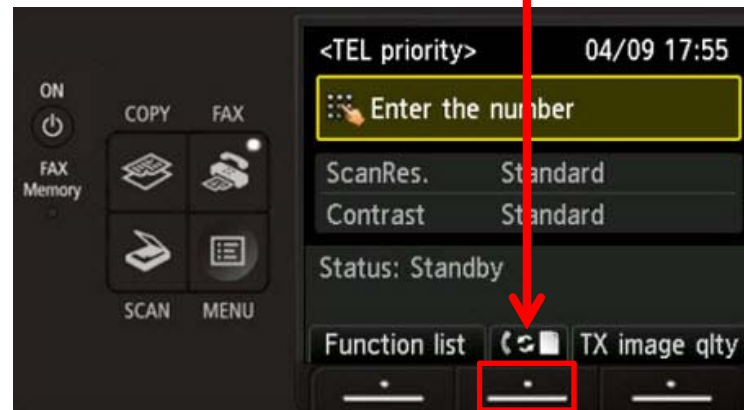
Step 3

The fax standby screen will appear.



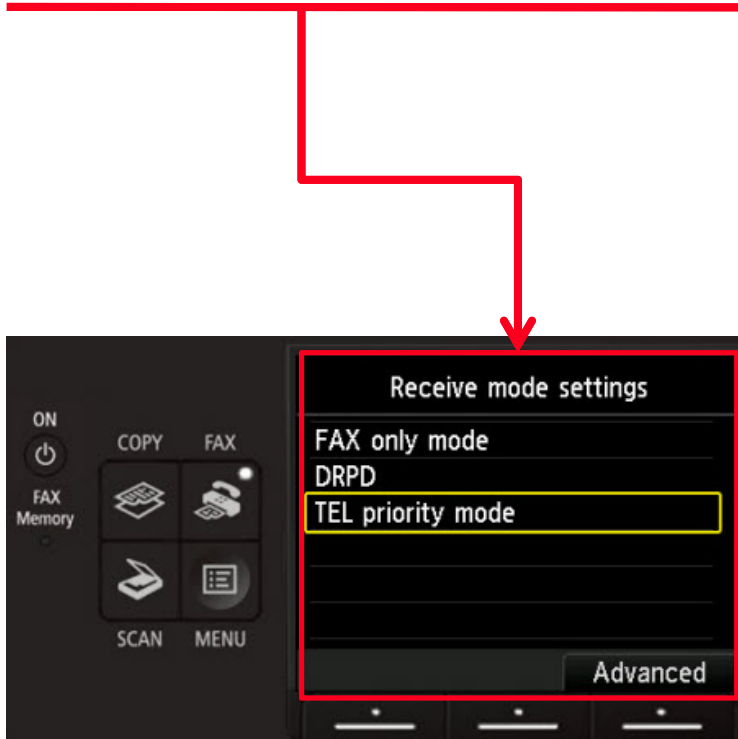
Step 4

Press the center **FUNCTION** button.



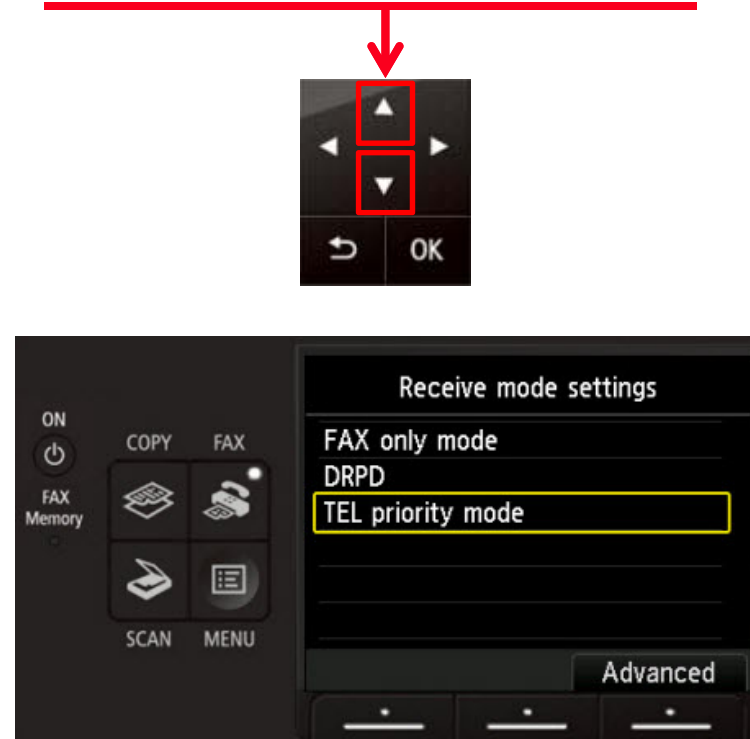
Step 5

The **Receive mode settings** screen will appear.



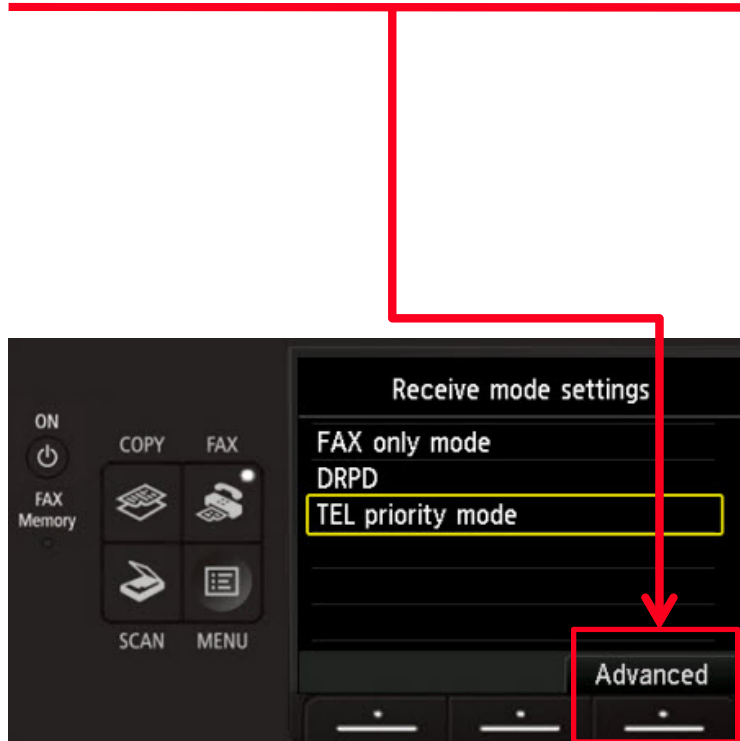
Step 6

Use the **UP** or **Down** button to highlight "TEL priority mode".



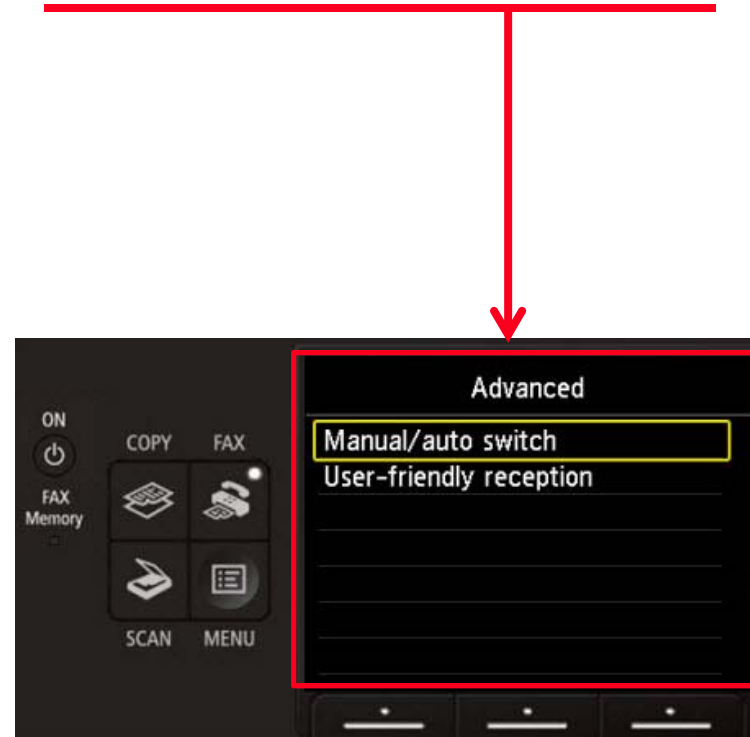
Step 7

Press the right **FUNCTION** button under the **Advanced** label.



Step 8

The **Advanced** screen will appear.



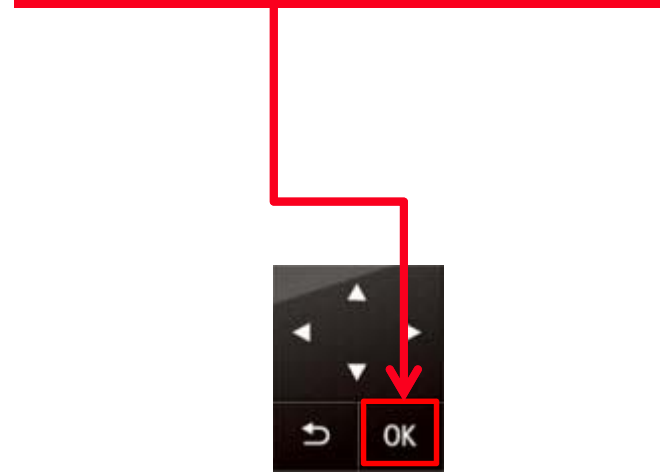
Step 9

Use the **UP** or **DOWN** button to select “User-friendly reception”.



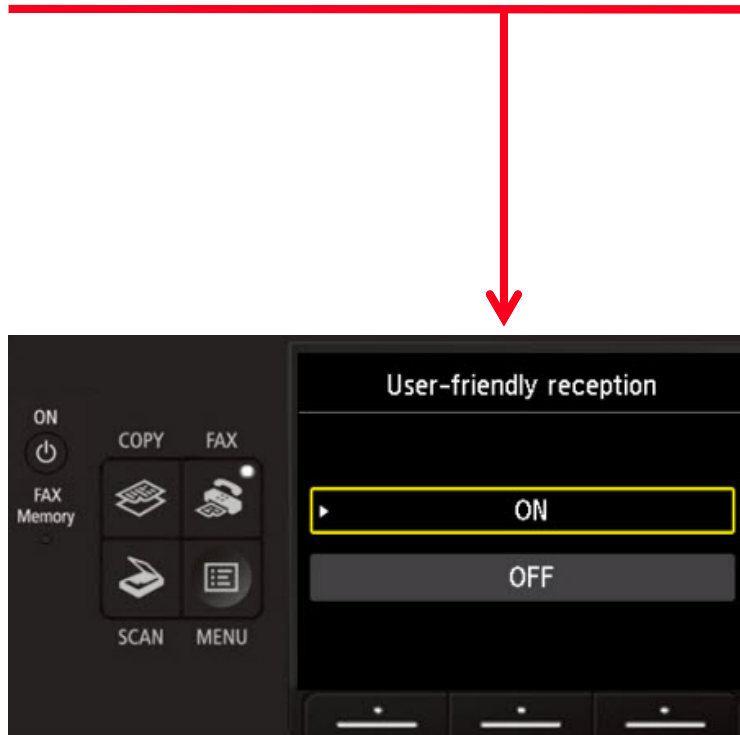
Step 10

Press the **OK** button.



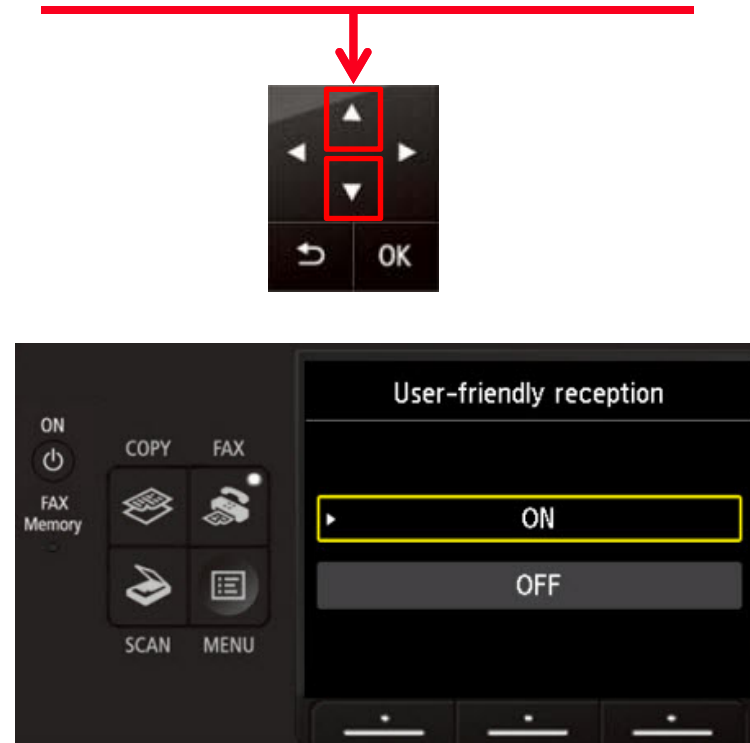
Step 11

The **User-friendly reception** screen will appear.



Step 12

Use the **UP** or **DOWN** button to select "ON".



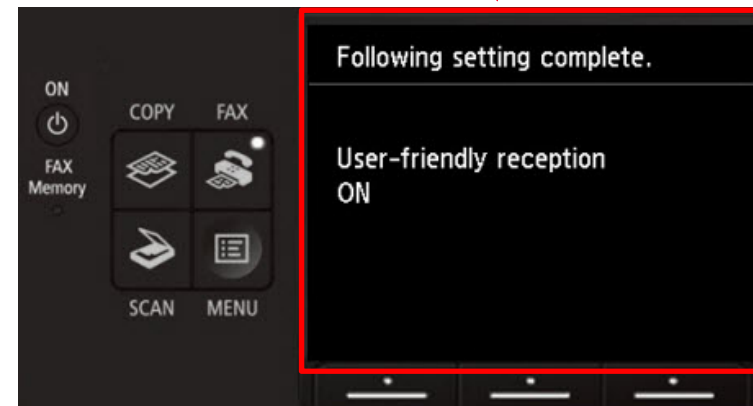
Step 13

Press the **OK** button.



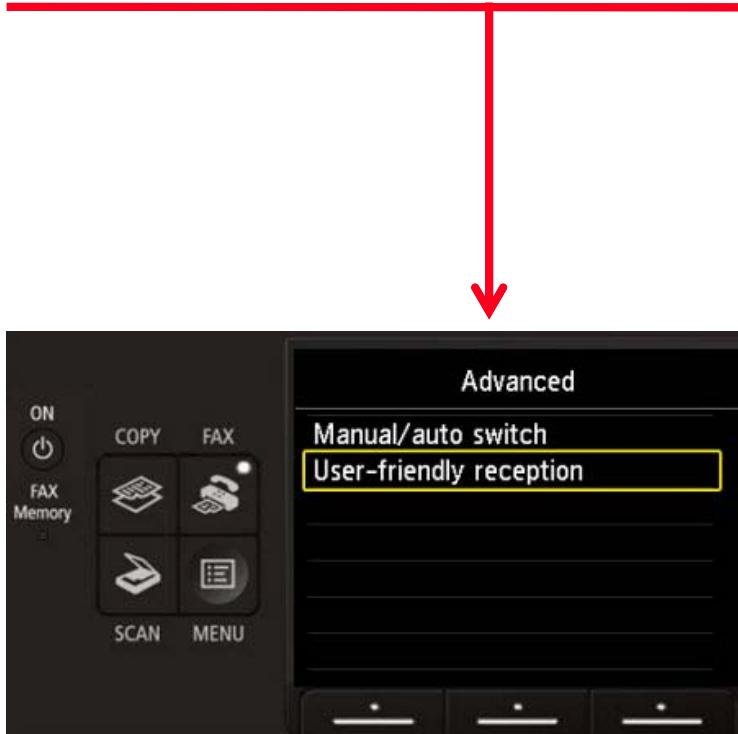
Step 14

The screen will quickly flash “User-friendly reception ON”.



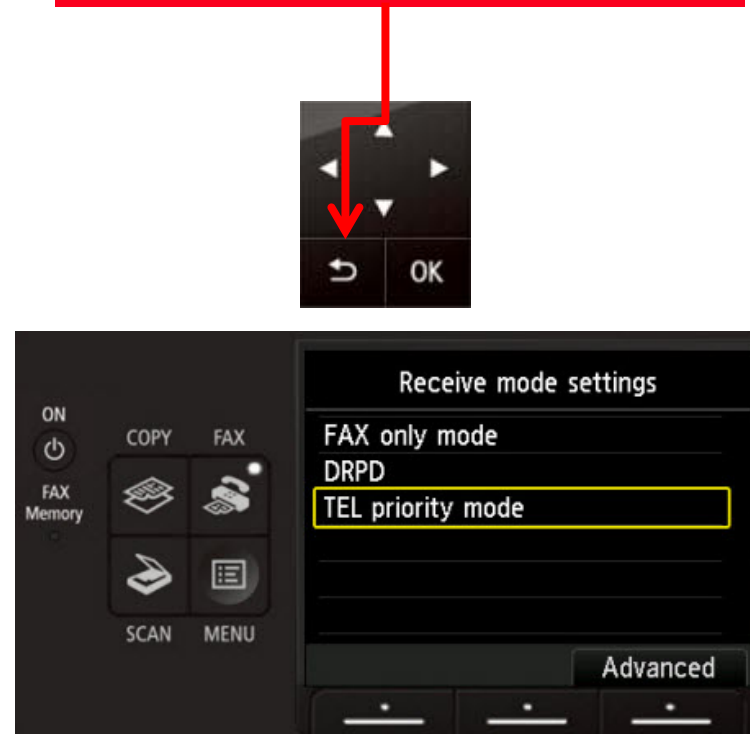
Step 15

The screen will return to the **Advanced** window.



Step 16

Press the **Back** button to return to **Receive mode settings** window.



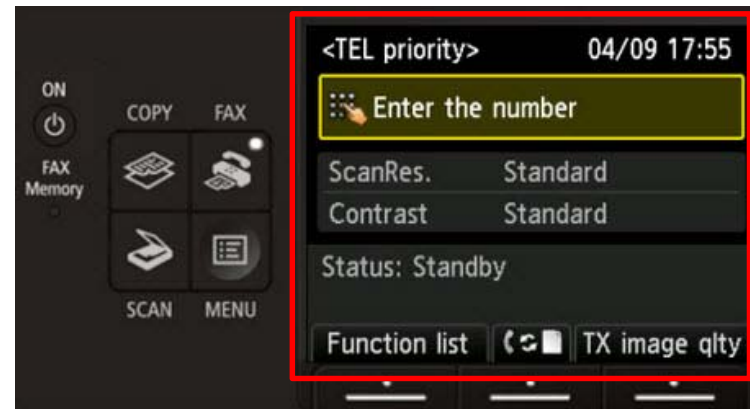
Step 17

Confirm “TEL priority mode” is highlighted and then press the **OK** button.



Step 18

You will return to the “Fax standby screen” and ‘TEL priority’ will appear on the screen.



Receiving A Fax

To receive a fax:

- Pick up the handset on the phone connected to the MX522.
- Listen for fax tones.
- When the tones stop hang up the handset.
- The MX522 will receive the fax document.

To receive a fax while you are away:

- The answering machine will answer the call.
- If fax tones are heard by the MX522 it will take over the call and receive the fax document.

IMPORTANT: In order to receive a fax, you must either pick up the handset on a phone that is connected to the MX522 or let your answering machine answer the call.

