



Setting Up Your MX452 In Default Mode (Tel Priority Mode) With An Answering Machine DSL/Cable Modem Connection



Fax Easy Setup

Click [Next](#) to step through this image-friendly version of **Fax Easy Setup**.

If you started **Fax Easy Setup**, on the fax machine's operation panel, and prefer to go through this image-friendly version...

Step 1

Press the FAX button at any screen to go to fax standby mode.



Step 2

Click [Next](#) to proceed through the setup.





Connecting The Phone Lines



Connecting Your Phone/Answering Machine

Is your answering machine built into your phone?

YES

Click Here or Go To Page 13

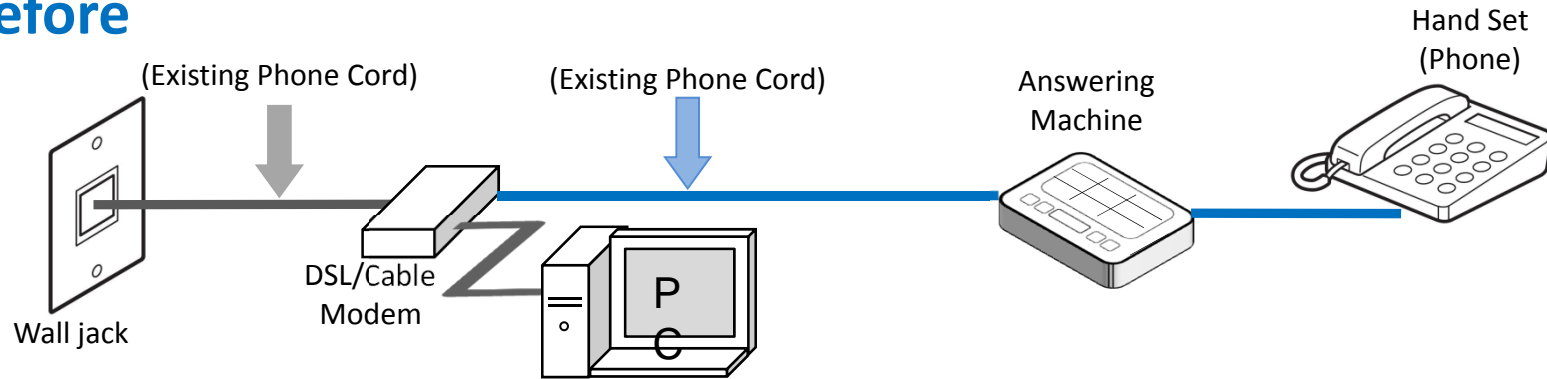
NO

Click the Next Button

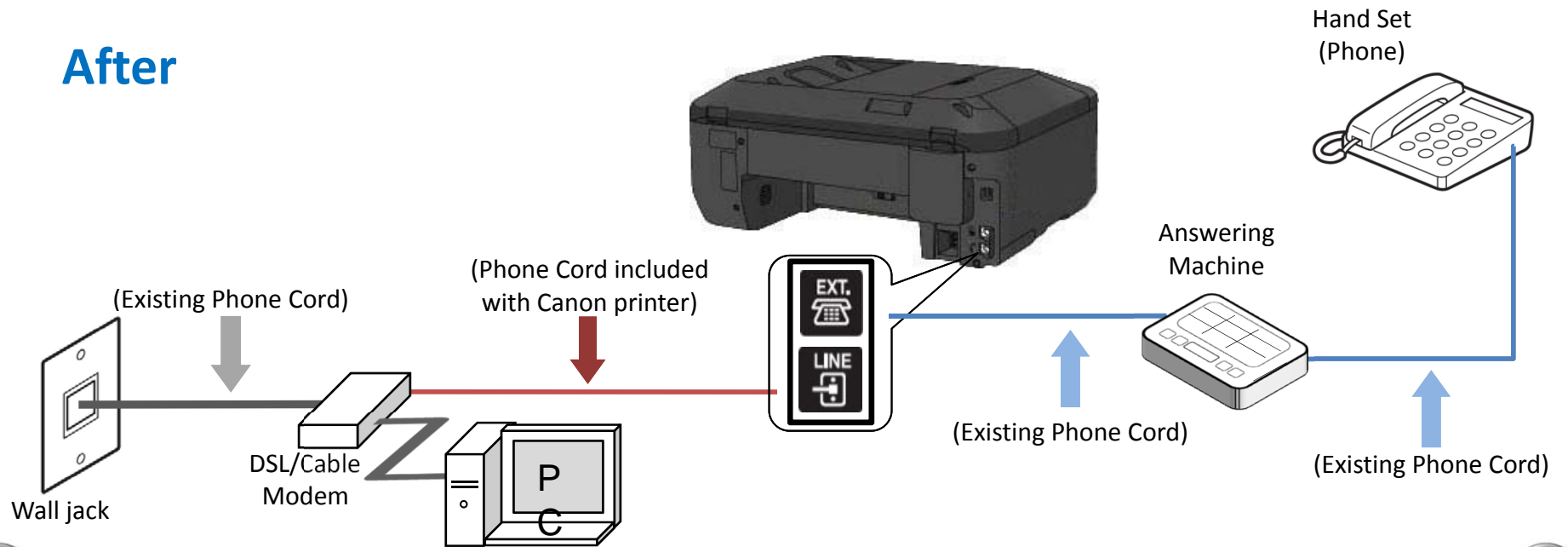


Fax to Phone Line Connection

Before

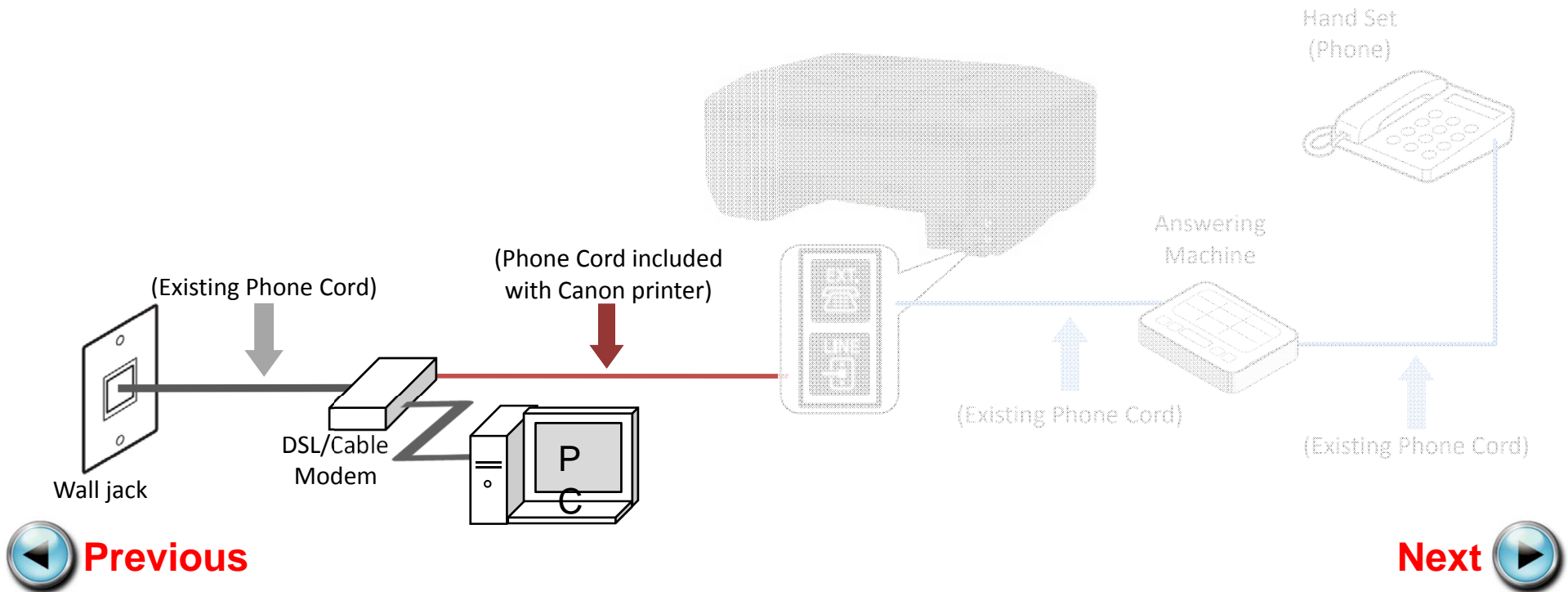


After



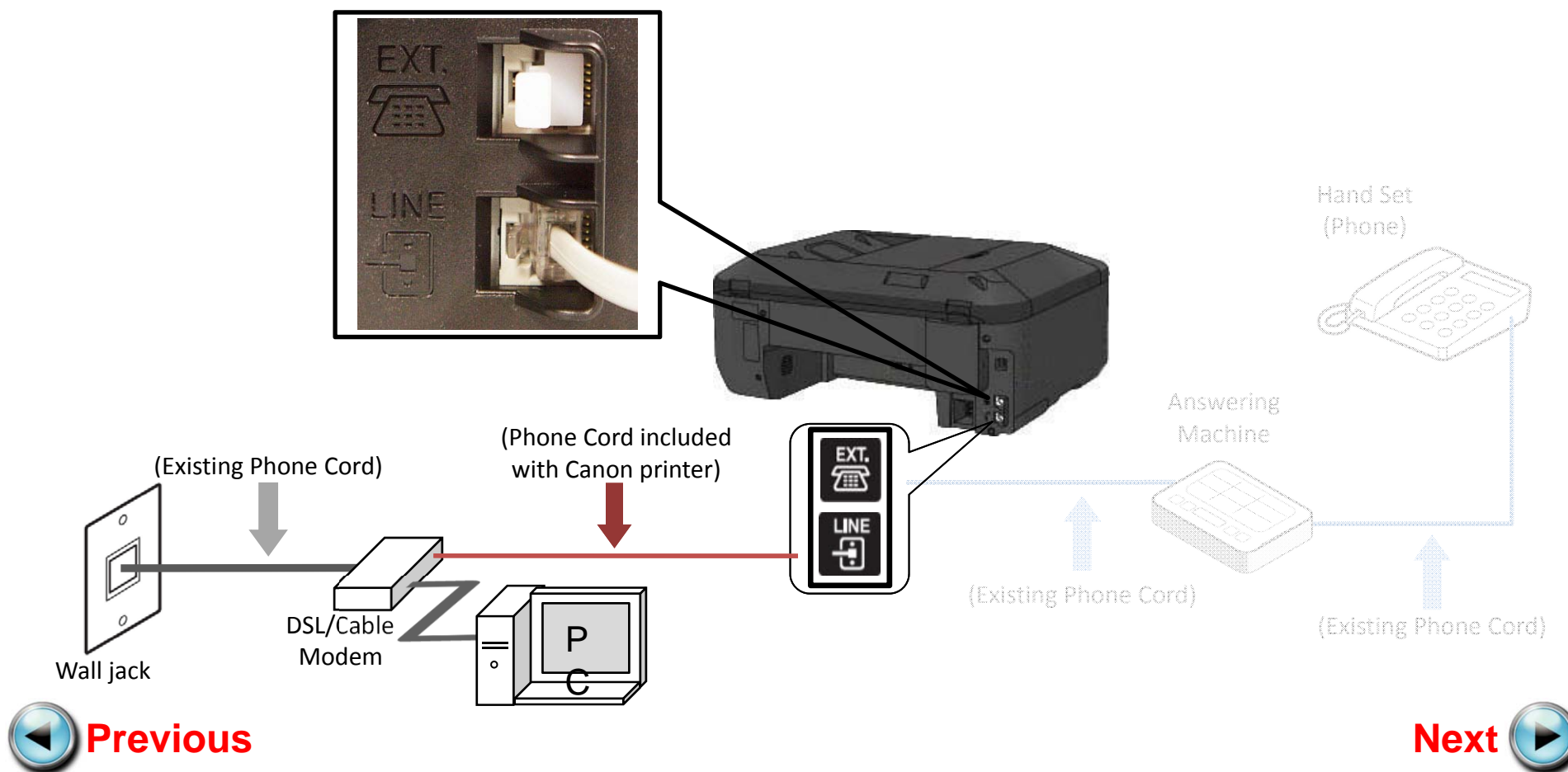
Fax to Phone Line Connection

- Plug the provided phone cord into the DSL/Cable Modem.



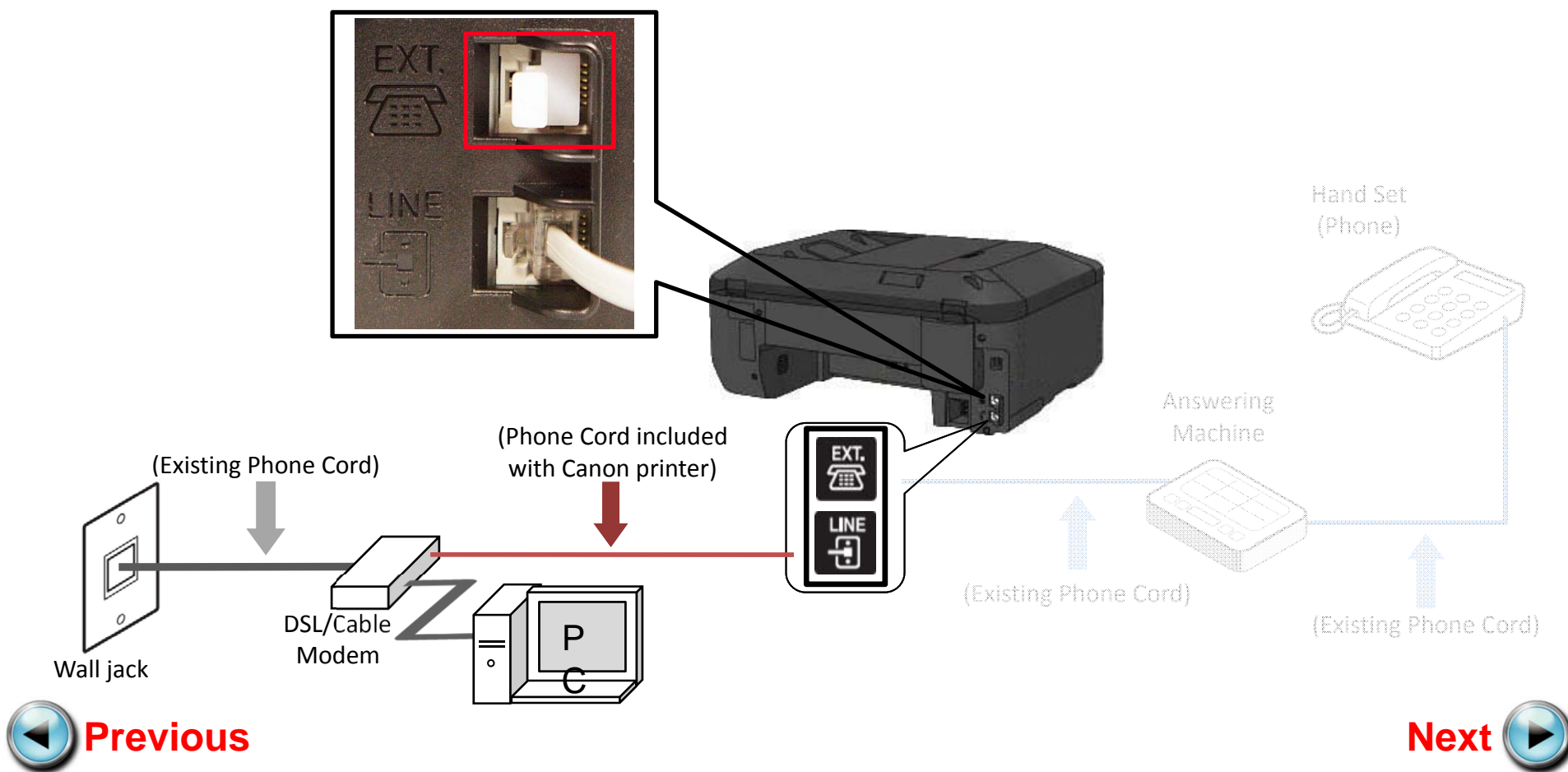
Fax to Phone Line Connection

- Plug the provided phone cord into the “LINE” jack located on the rear of the multifunction.



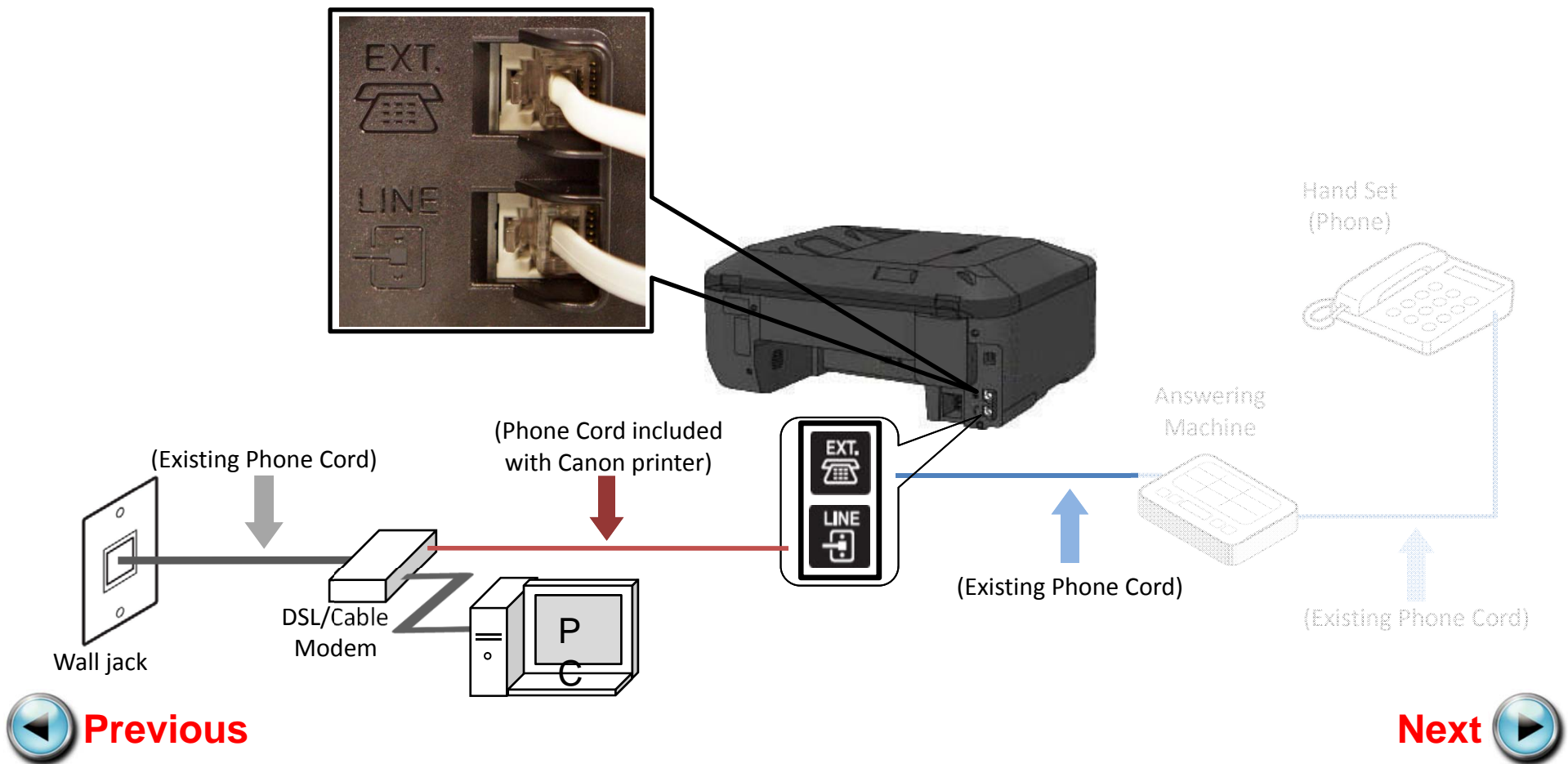
Fax to Phone Line Connection

- Remove the white plug from the upper jack labeled "EXT."



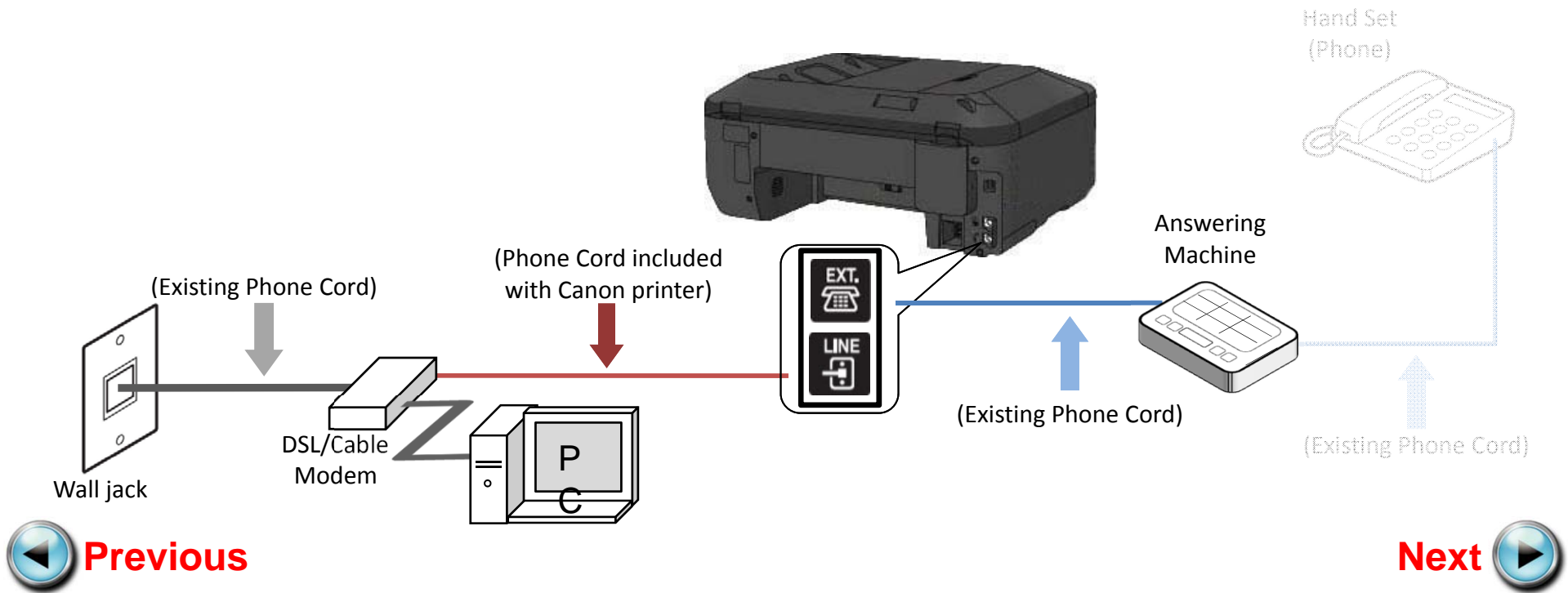
Fax to Phone Line Connection

- Plug the second phone cord into the “EXT.” jack located on the rear of the multifunction.



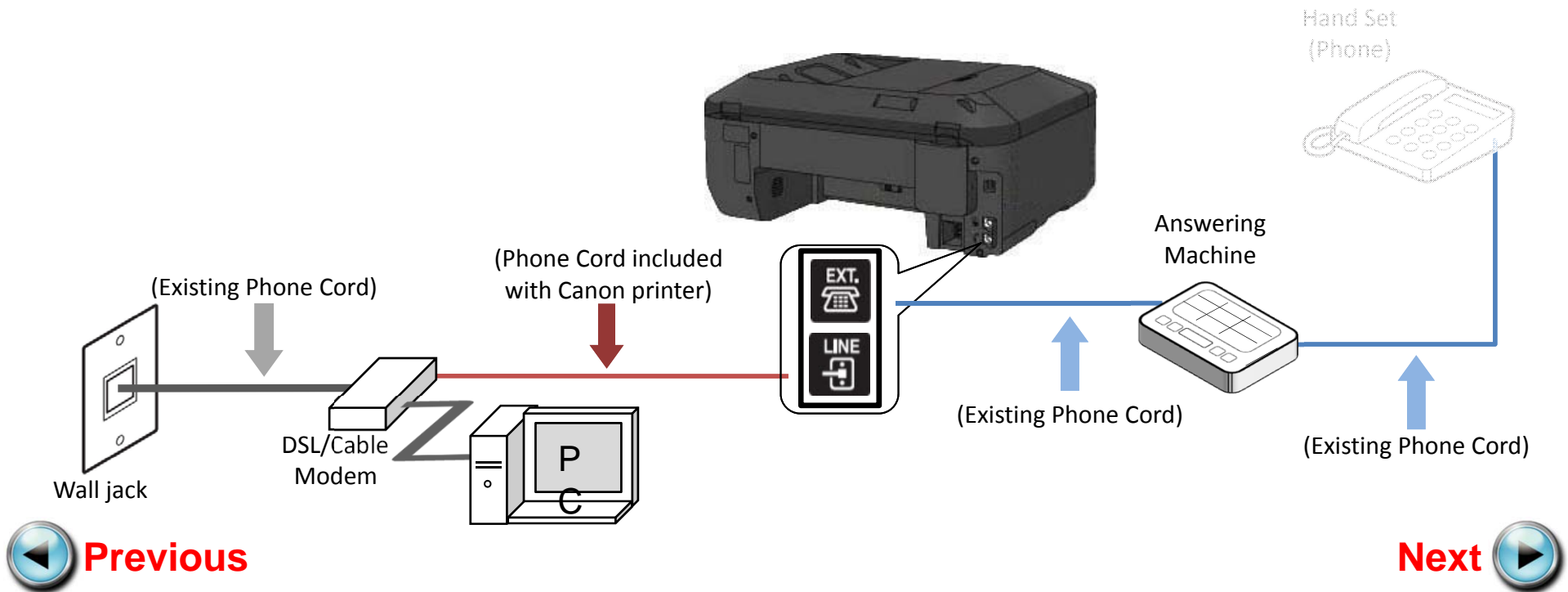
Fax to Phone Line Connection

- Plug the second phone cord into the answering machine.



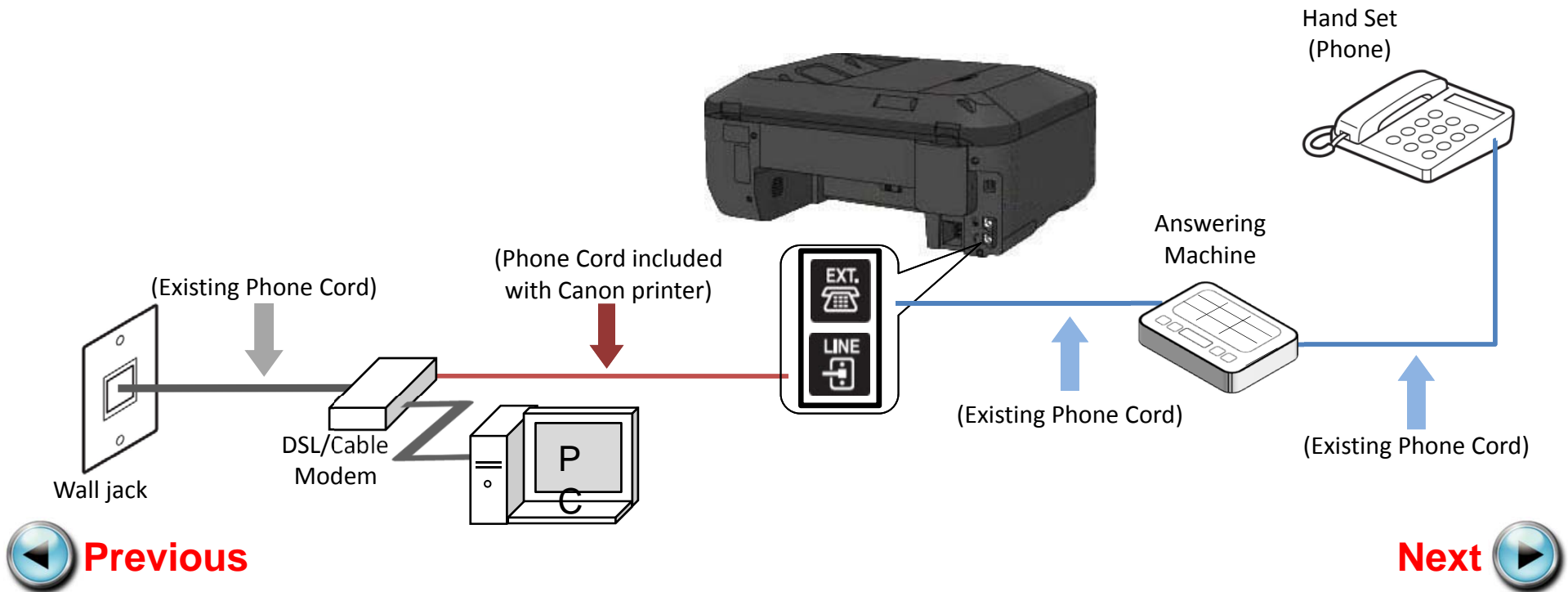
Fax to Phone Line Connection

- Plug the third phone cord into the answering machine.



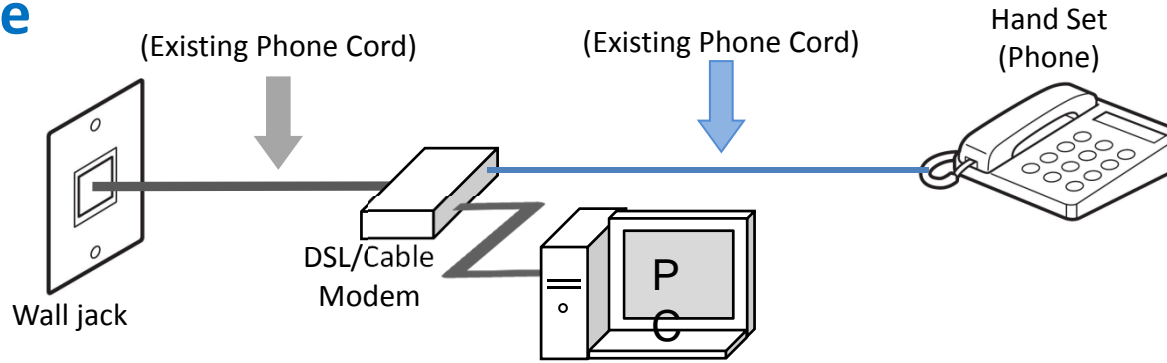
Fax to Phone Line Connection

- Plug the third phone cord into the phone.

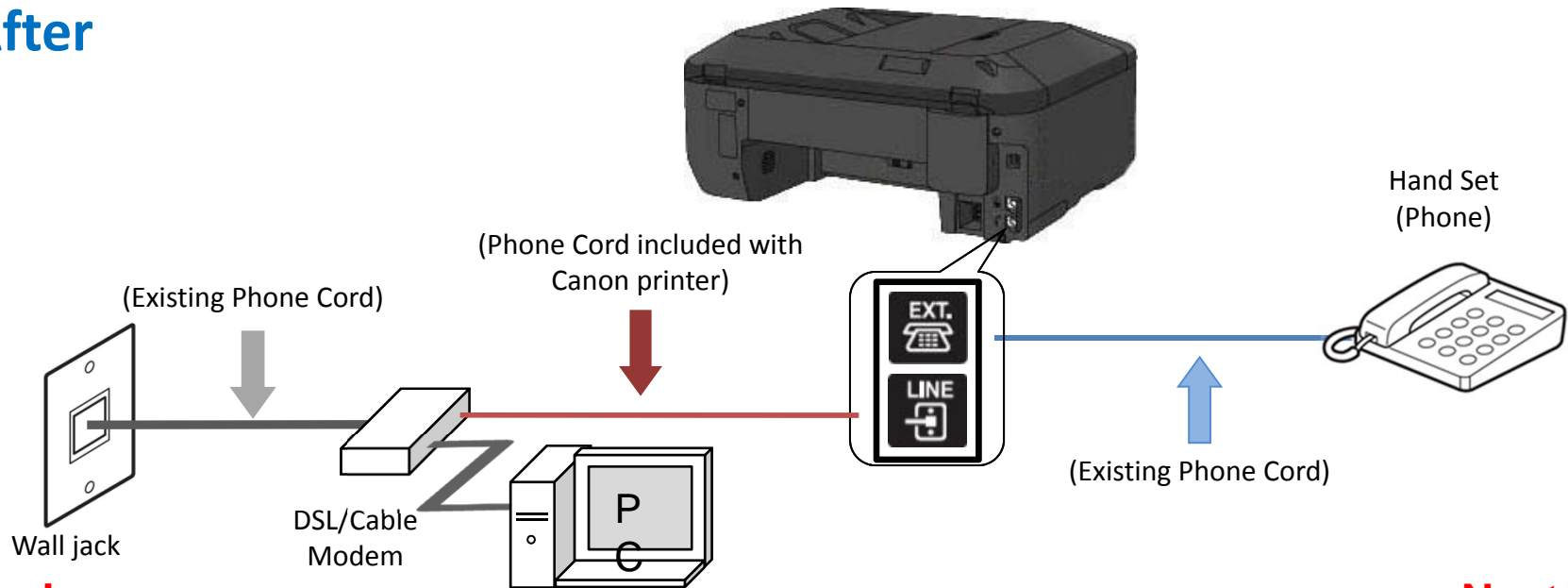


Fax to Phone Line Connection

Before



After

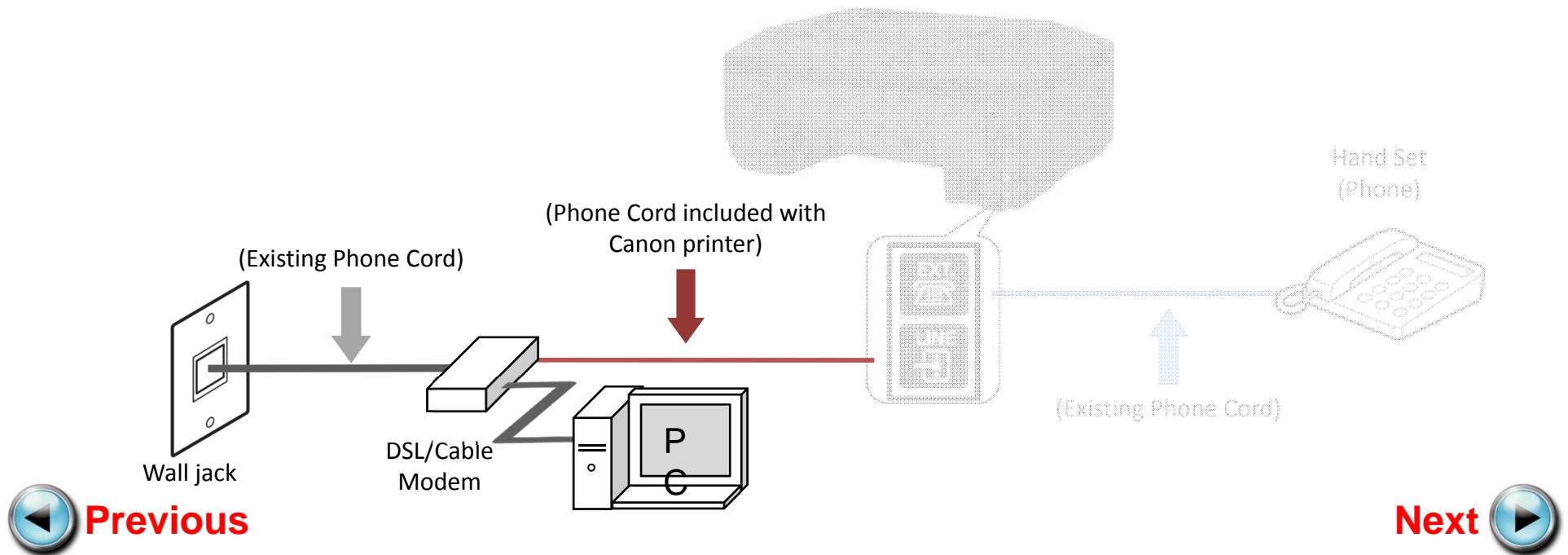


 **Previous**

Next 

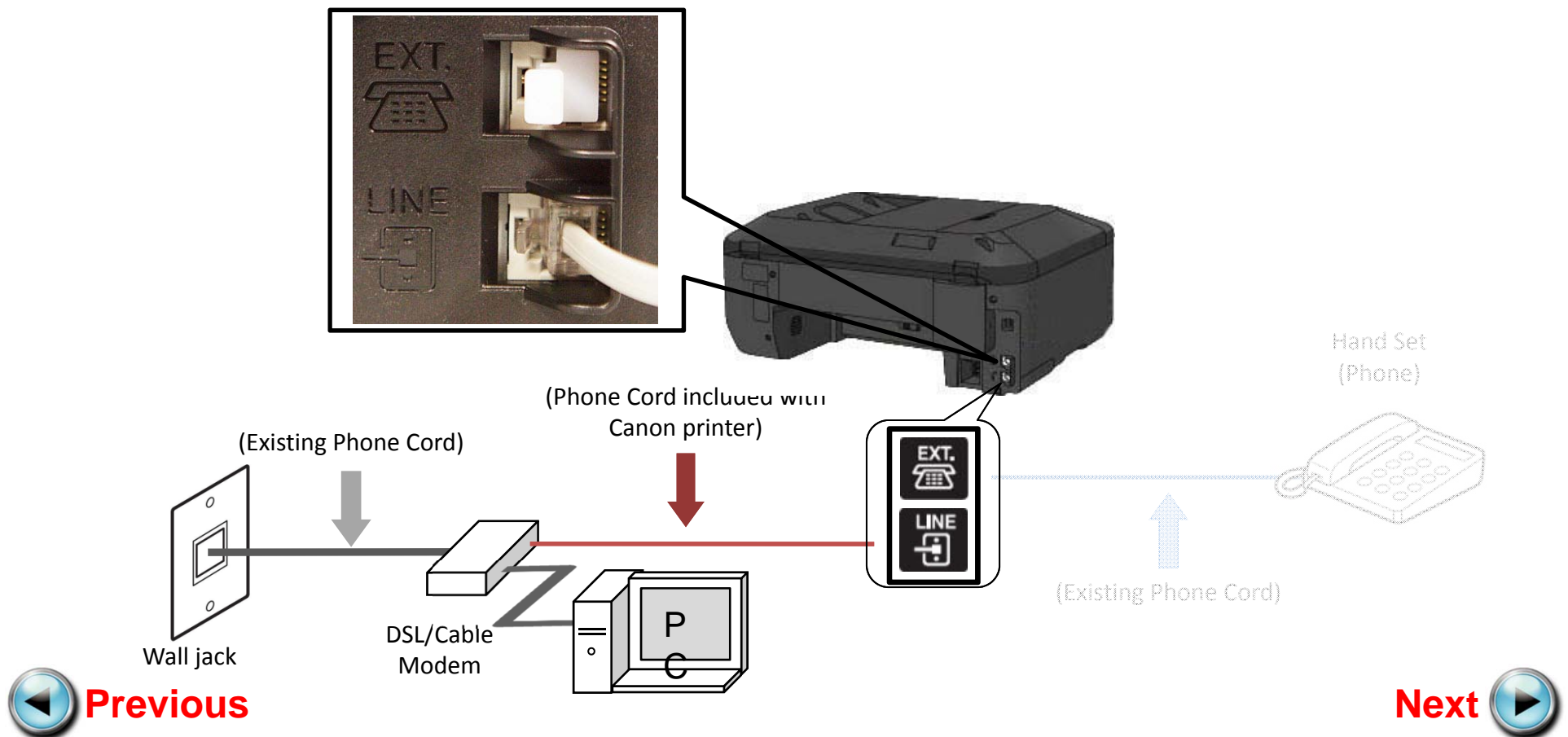
Fax to Phone Line Connection

- Plug the provided phone cord into the DSL/Cable Modem.



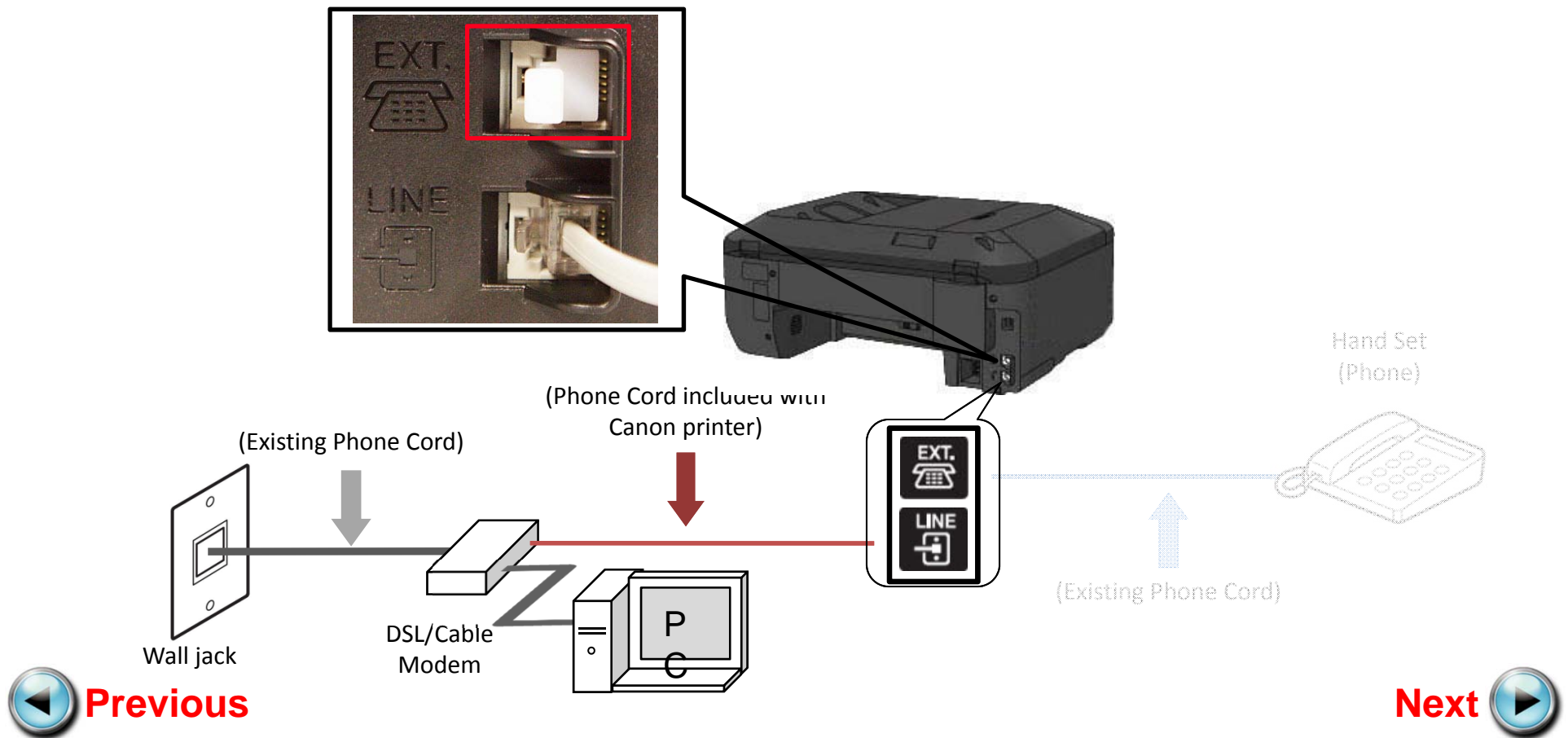
Fax to Phone Line Connection

- Plug the provided phone cord into the “LINE” jack located on the rear of the multifunction.



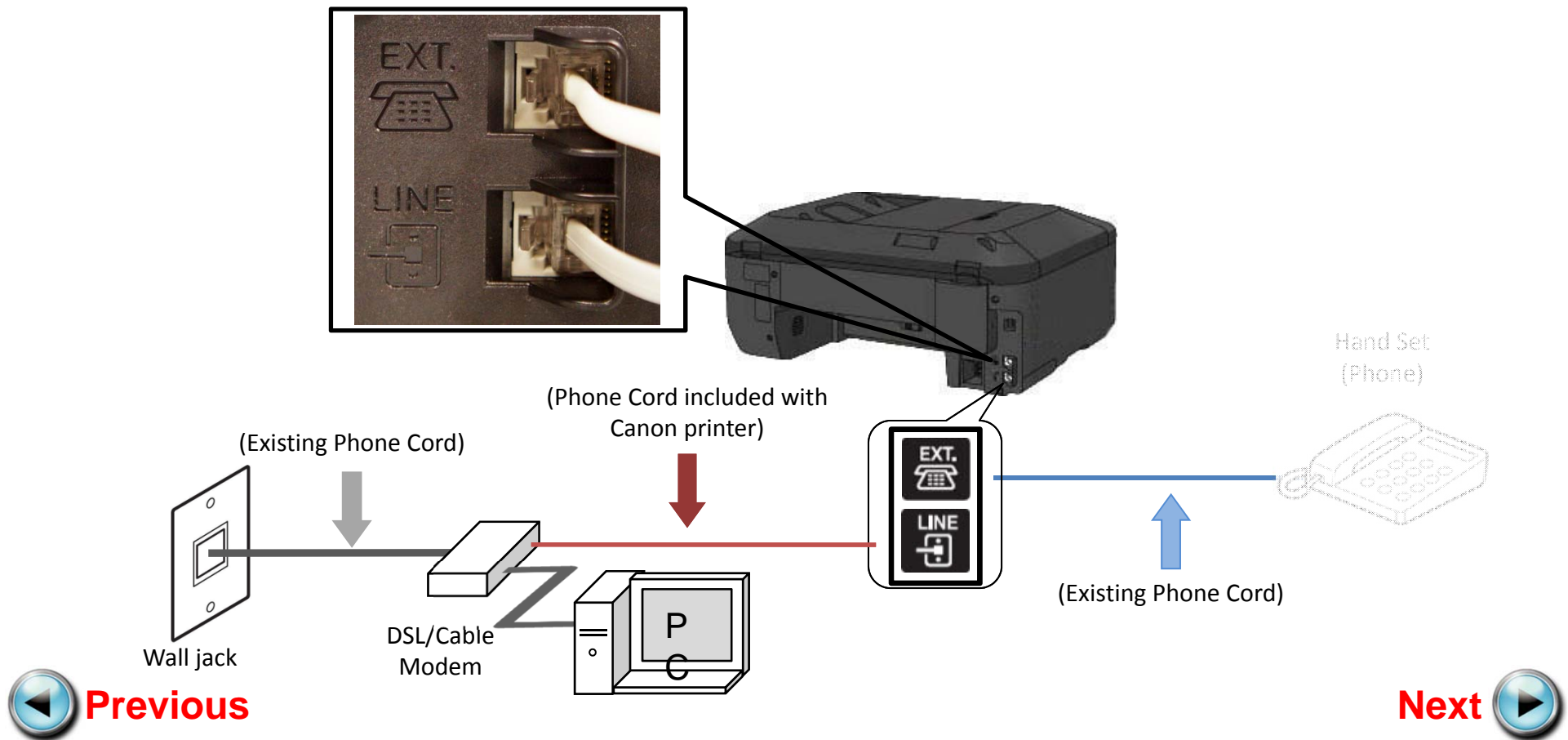
Fax to Phone Line Connection

- Remove the white plug from the upper jack labeled "EXT."



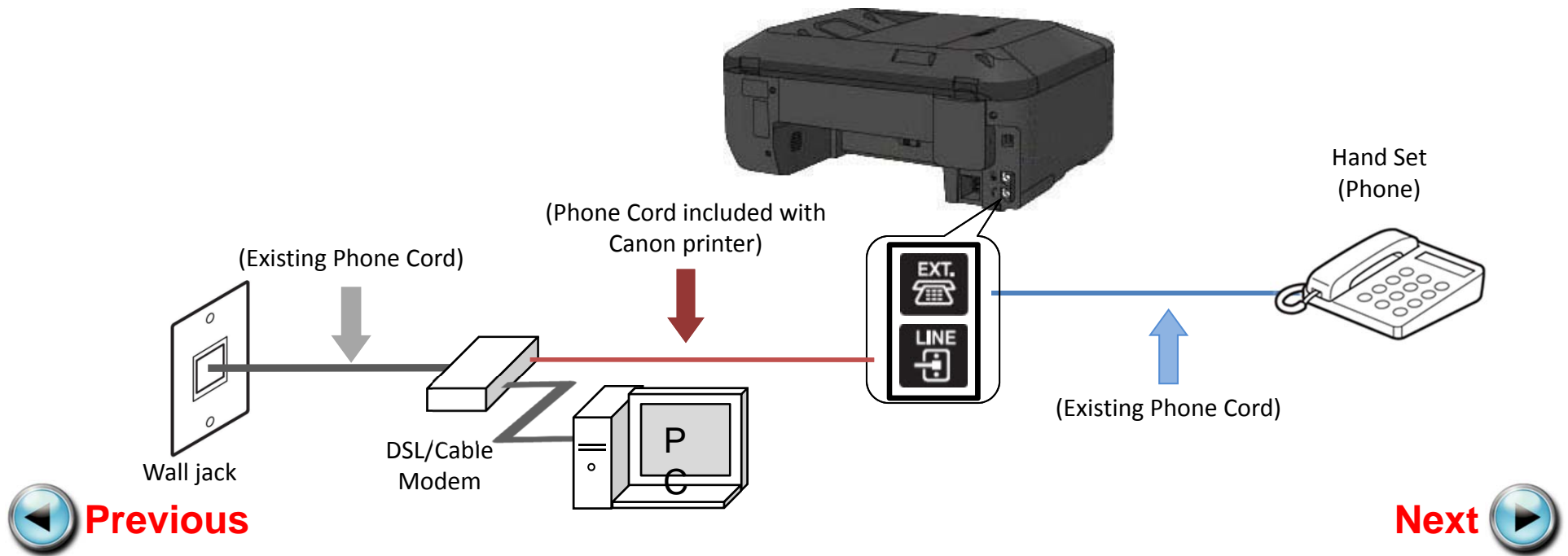
Fax to Phone Line Connection

- Plug the second phone cord into the “EXT.” jack located on the rear of the multifunction



Fax to Phone Line Connection

- Plug the second phone cord into the phone.





Setting Up The Receive Mode



Step 1

Turn on the MX452 by pressing the **ON** button, if it is not powered on already.



Step 2

Press the **FAX** button.



Step 3

The fax standby screen will appear.



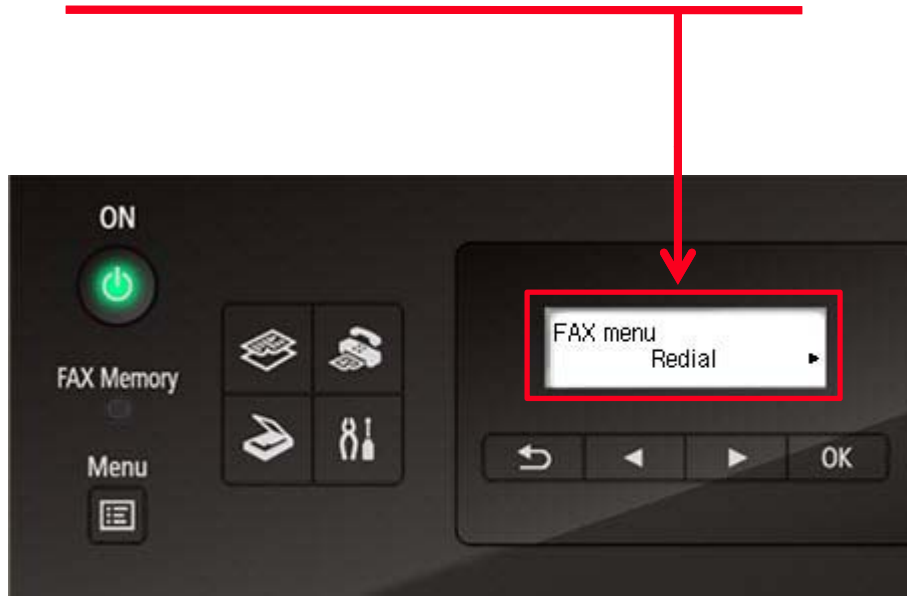
Step 4

Press the **Menu** button.



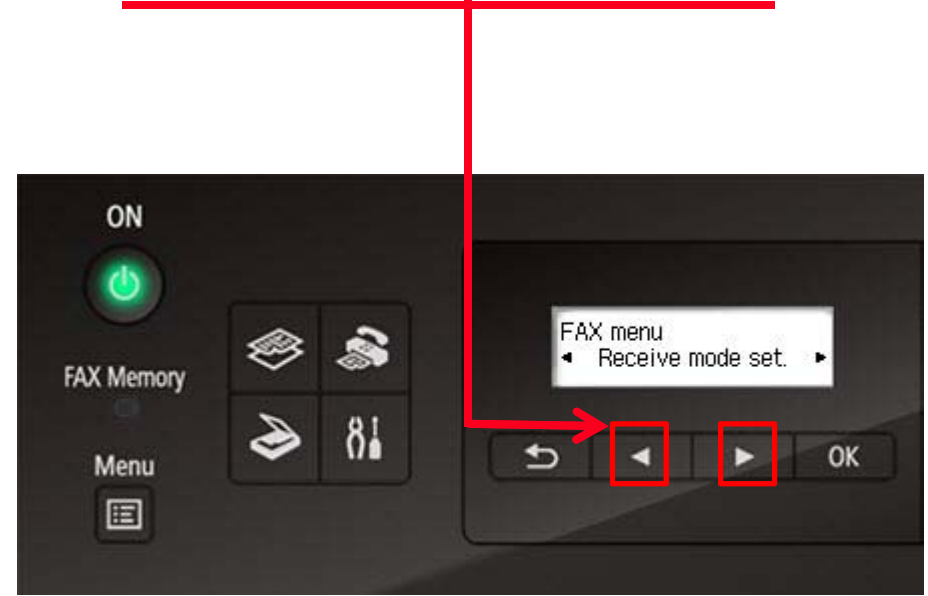
Step 5

The **FAX menu** screen will appear.



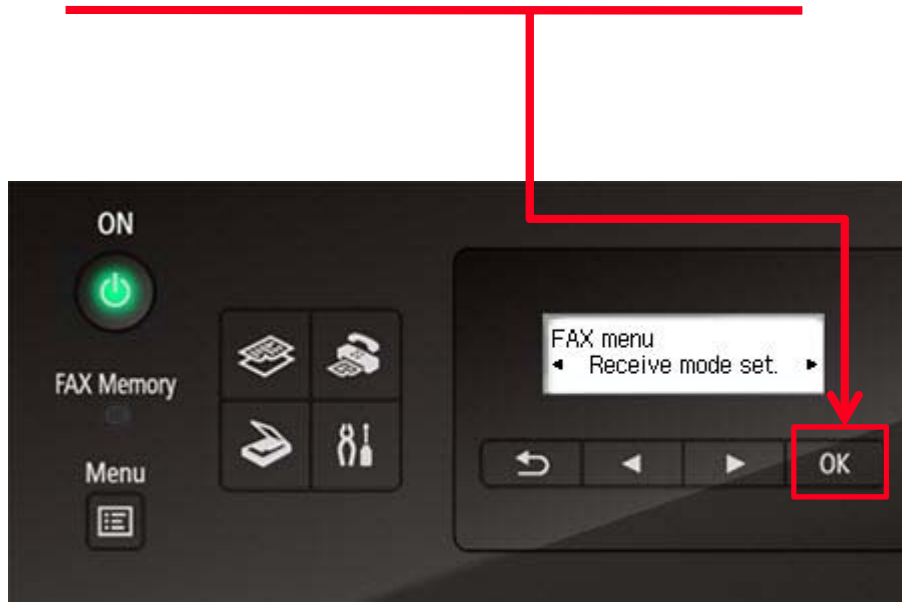
Step 6

Use the **LEFT** or **RIGHT** button to select "Receive mode set".



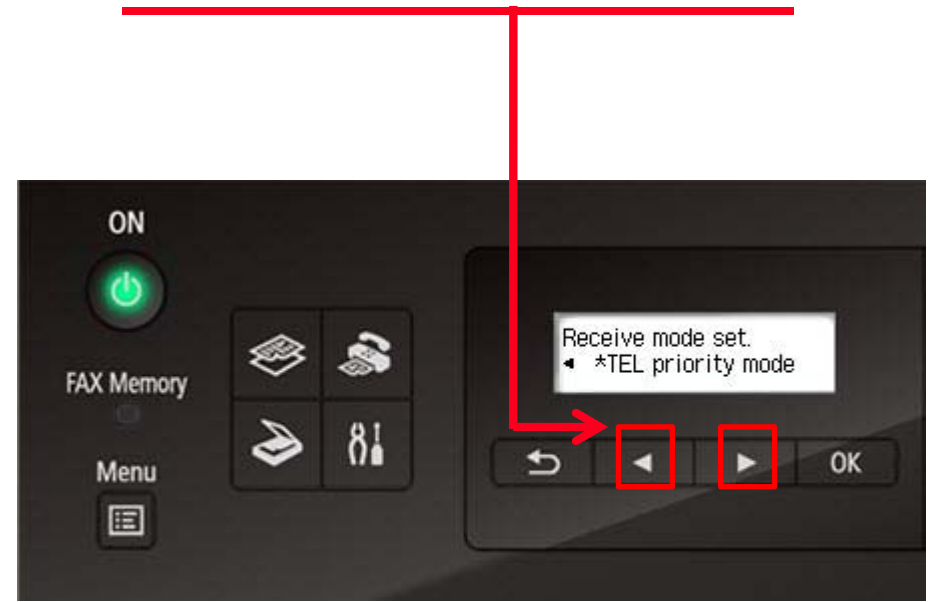
Step 7

Press the **OK** button.



Step 8

Use the **LEFT** or **RIGHT** button to select "TEL priority mode".



Step 9

Press the **OK** button.



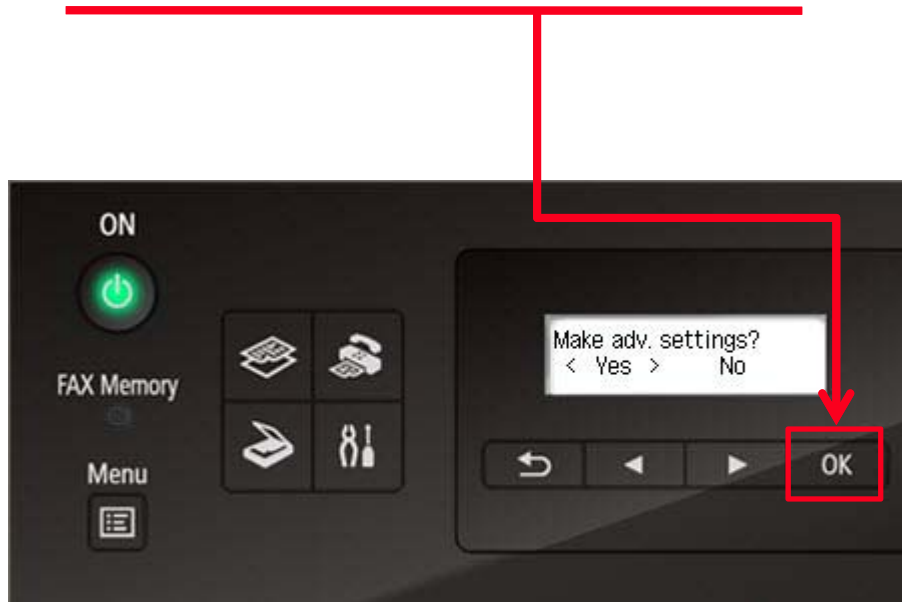
Step 10

Use the **LEFT** or **RIGHT** button to select "Yes" at **Make adv. settings** screen.



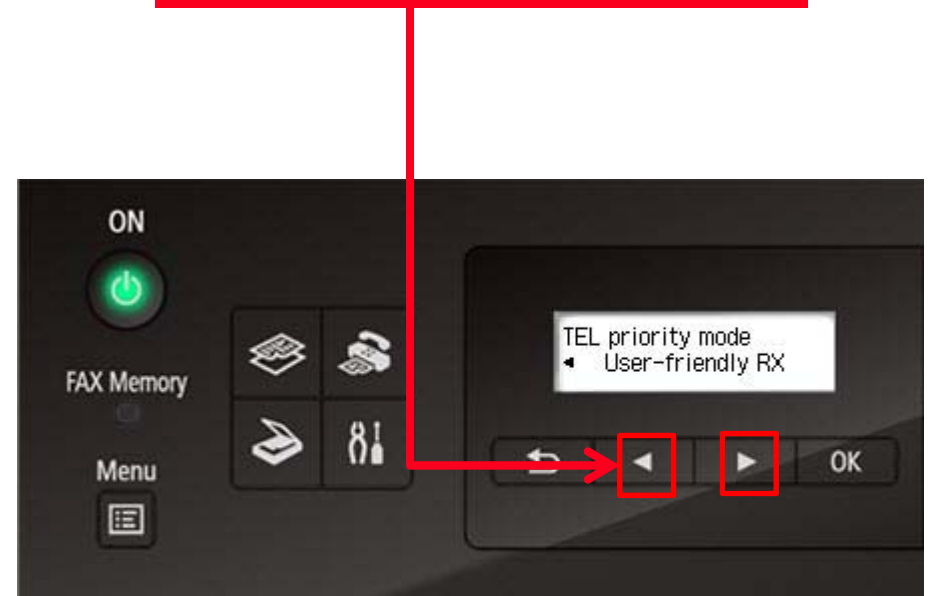
Step 11

Press the **OK** button.



Step 12

Use the **LEFT** or **RIGHT** button to select "User-friendly RX".



Step 13

Press the **OK** button.



Step 14

Use the **LEFT** or **RIGHT** button to select "ON".



Step 15

Press the **OK** button.



Step 16

You will return to the "Fax standby screen" and the receive mode will appear on the screen.



Receiving A Fax

To receive a fax:

- Pick up the handset on the phone connected to the MX452.
- Listen for fax tones.
- When the tones stop hang up the handset.
- The MX452 will receive the fax document.

To receive a fax while you are away:

- The answering machine will answer the call.
- If fax tones are heard by the MX452 it will take over the call and receive the fax document.

IMPORTANT: In order to receive a fax, you must either pick up the handset on a phone that is connected to the MX452 or let your answering machine answer the call.

