



Setting Up Your MX432 In Default Mode (Tel Priority Mode) With An Answering Machine DSL/Cable Modem Connection

Fax Easy Setup

Click [Next](#) to step through this image-friendly version of **Fax Easy Setup**.

If you started **Fax Easy Setup**, on the fax machine's operation panel, and prefer to go through this image-friendly version...

Step 1

Press the FAX button at any screen to go to fax standby mode.



Step 2

Click [Next](#) to proceed through the setup.



Connecting The Phone Lines

Connecting Your Phone/Answering Machine

Is your answering machine built into your phone?

YES

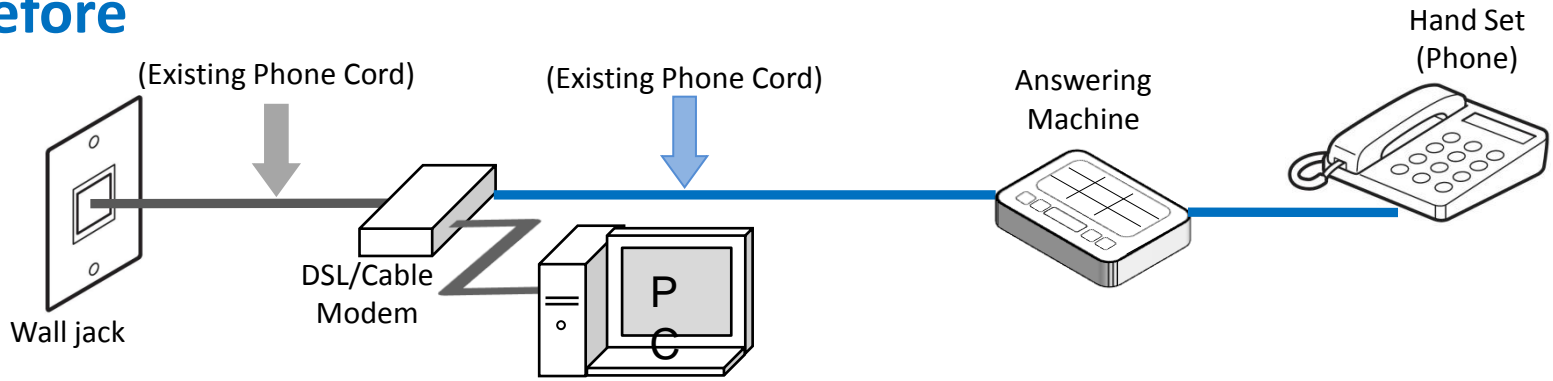
Click Here or Go To [Page 13](#)

NO

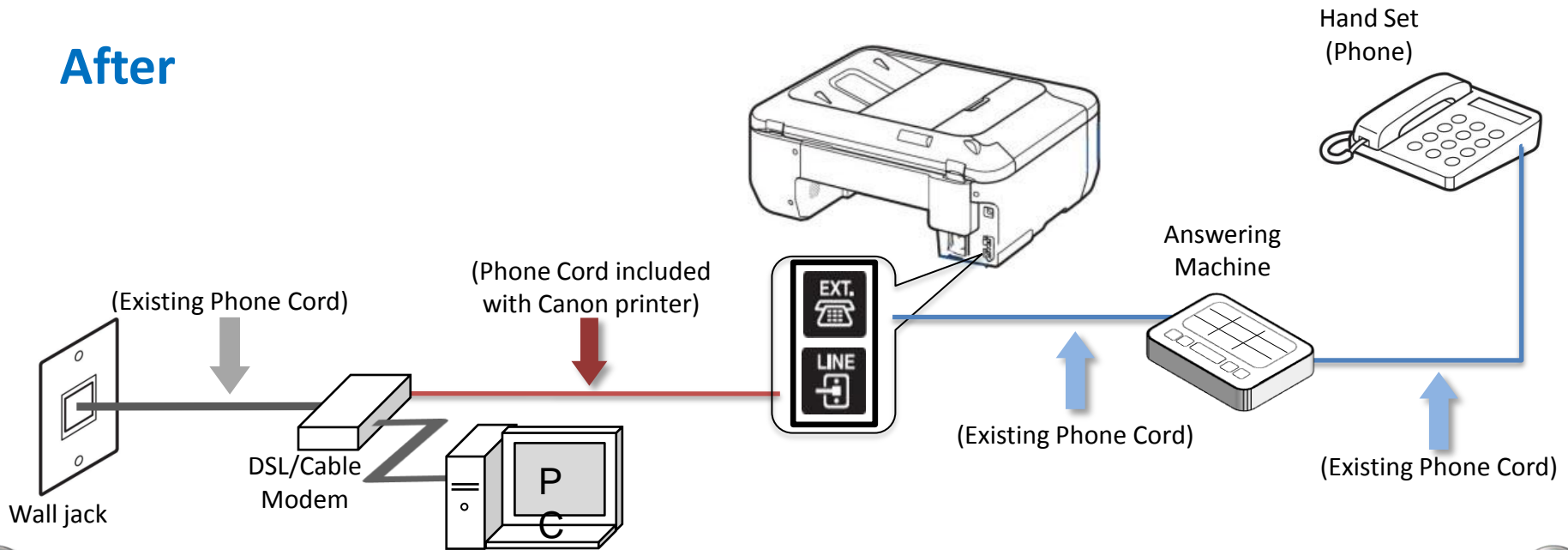
Click the Next Button

Fax to Phone Line Connection

Before



After

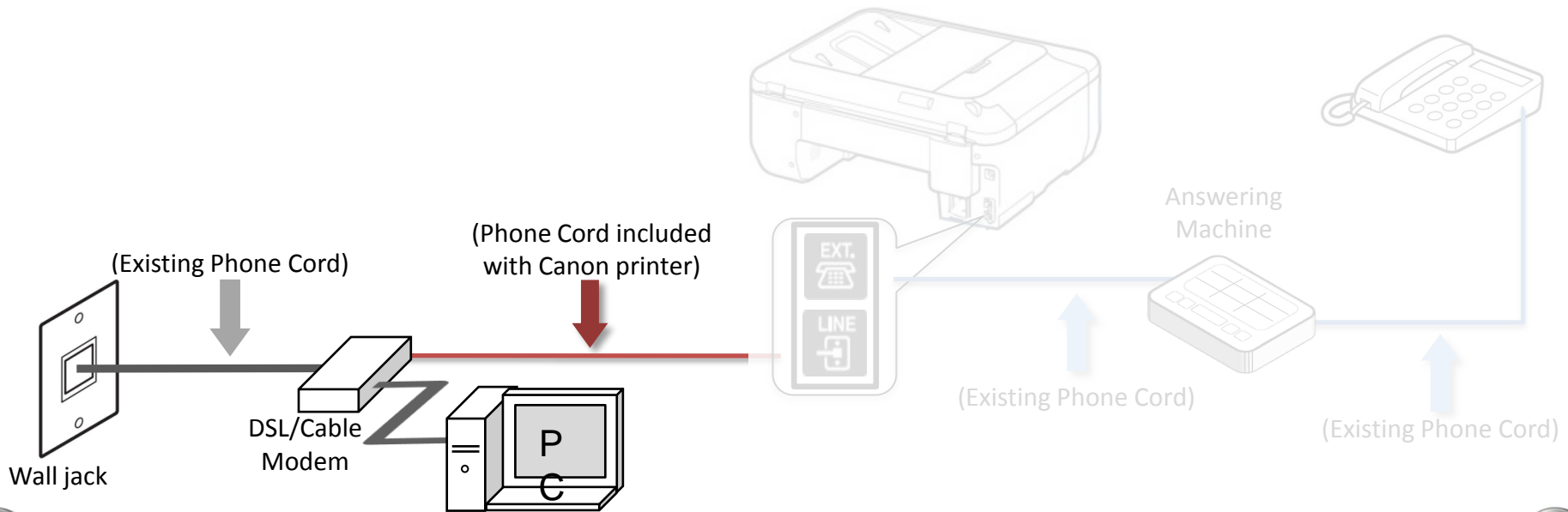


 **Previous**

Next 

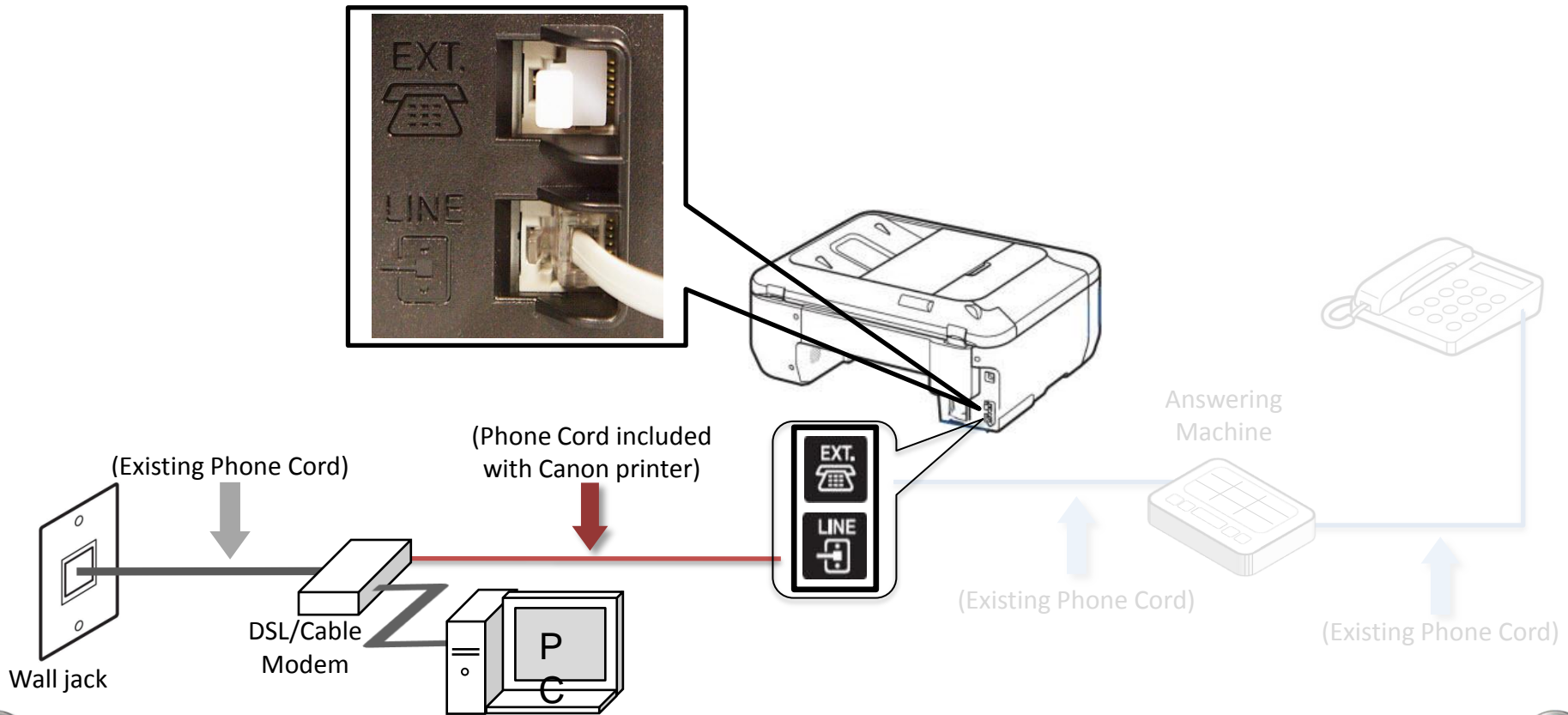
Fax to Phone Line Connection

- Plug the provided phone cord into the DSL/Cable Modem.



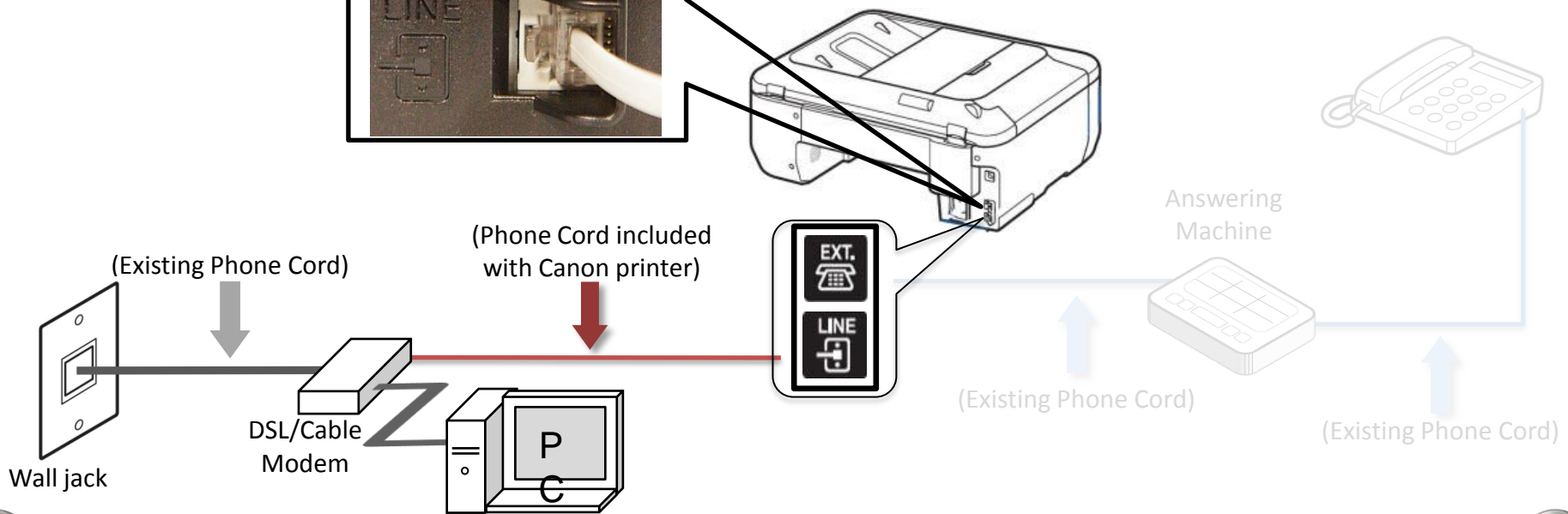
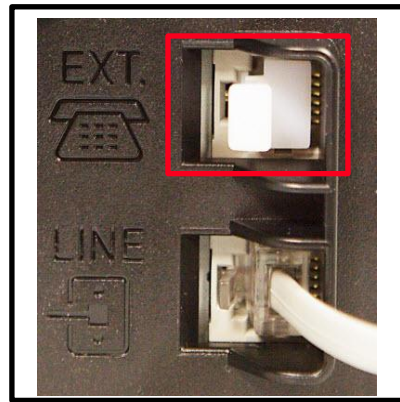
Fax to Phone Line Connection

- Plug the provided phone cord into the “LINE” jack located on the rear of the multifunction.



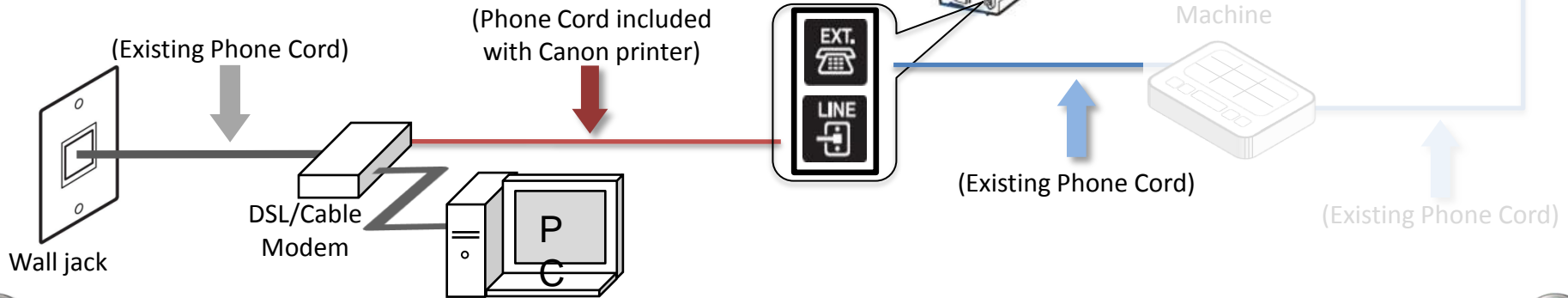
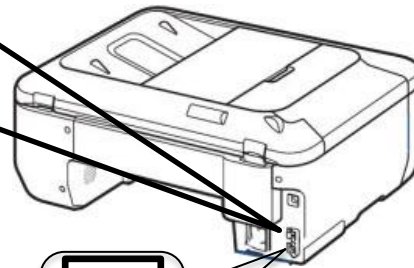
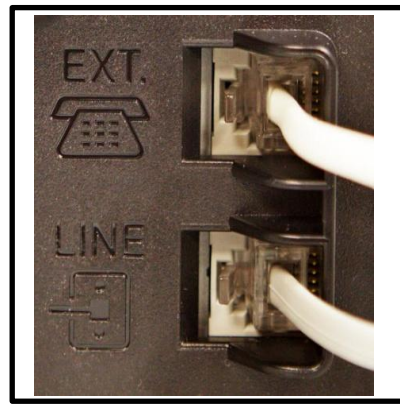
Fax to Phone Line Connection

- Remove the white plug from the upper jack labeled "EXT."



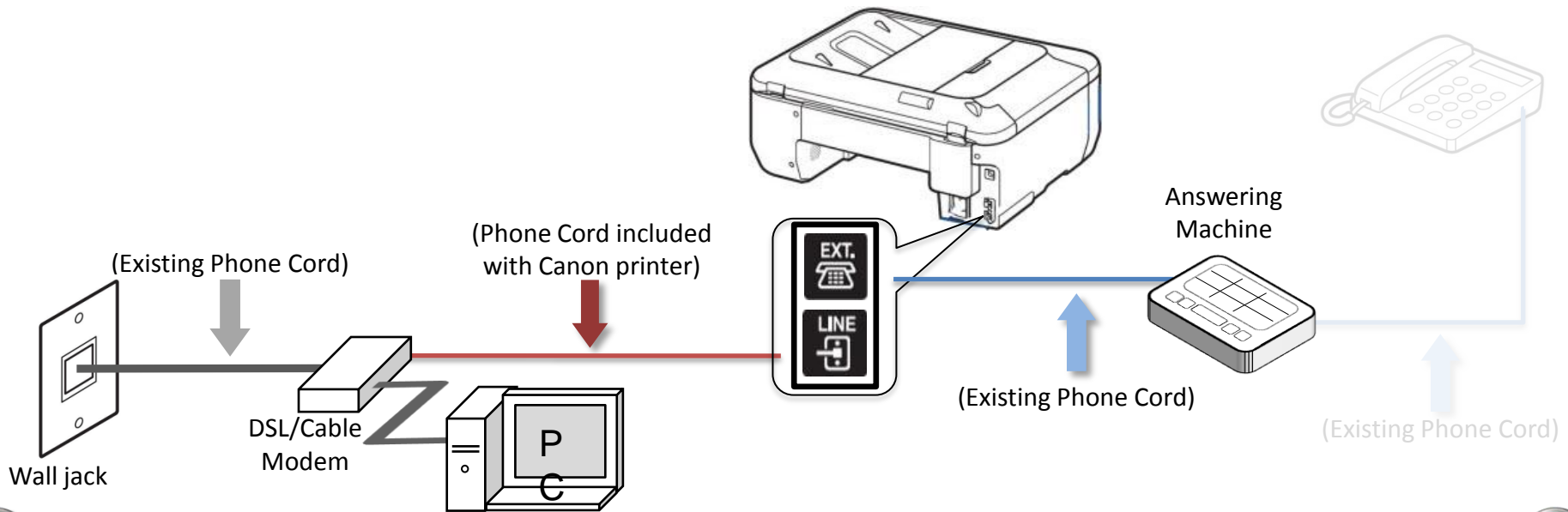
Fax to Phone Line Connection

- Plug the second phone cord into the “EXT.” jack located on the rear of the multifunction



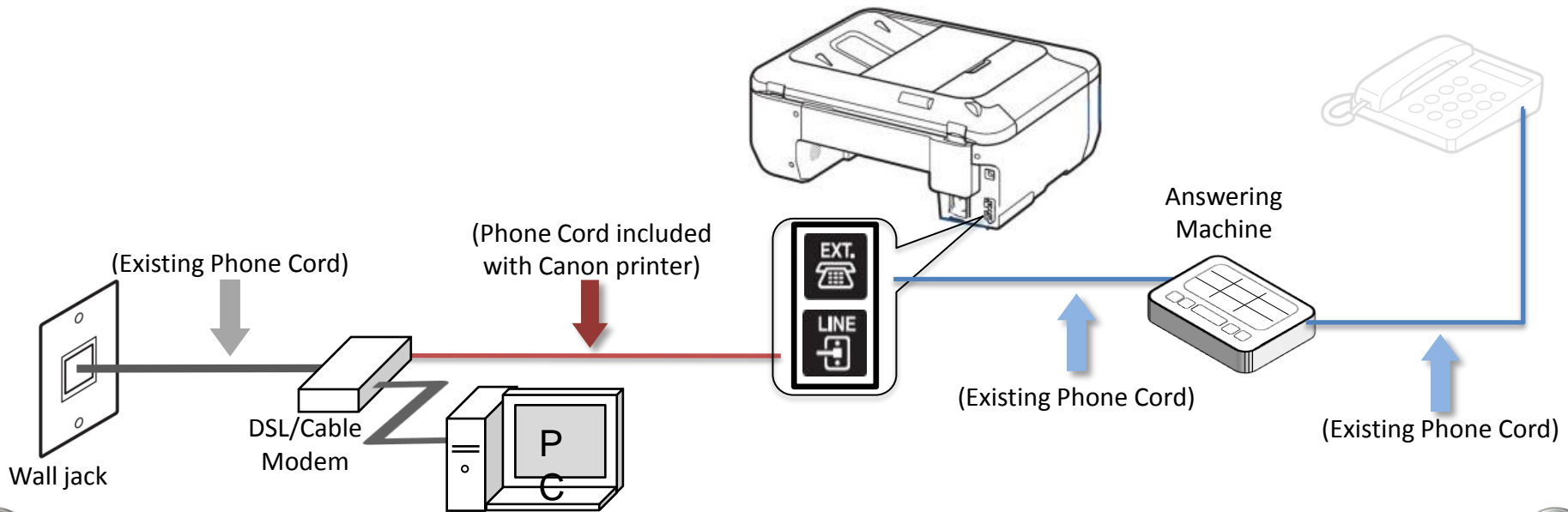
Fax to Phone Line Connection

- Plug the second phone cord into the answering machine.



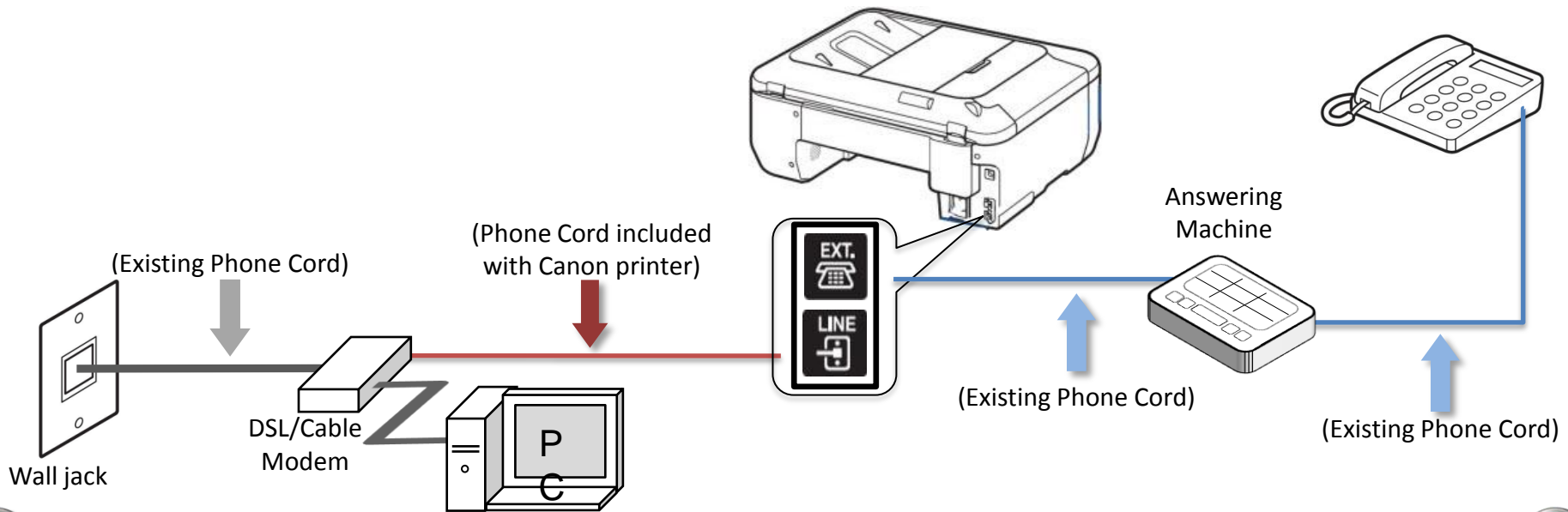
Fax to Phone Line Connection

- Plug the third phone cord into the answering machine.



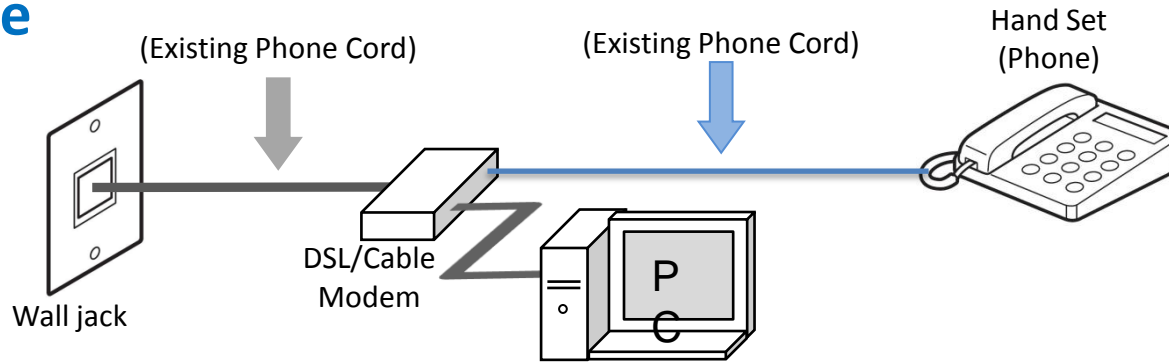
Fax to Phone Line Connection

- Plug the third phone cord into the phone.

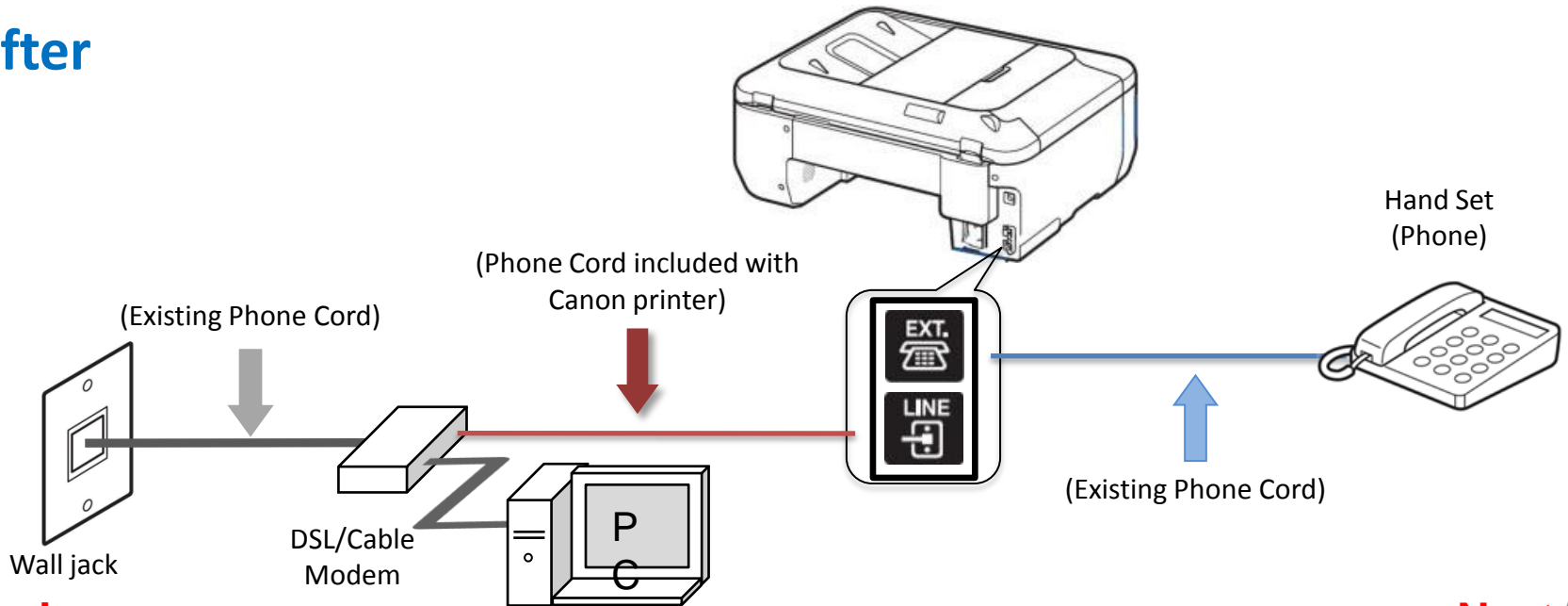


Fax to Phone Line Connection

Before



After

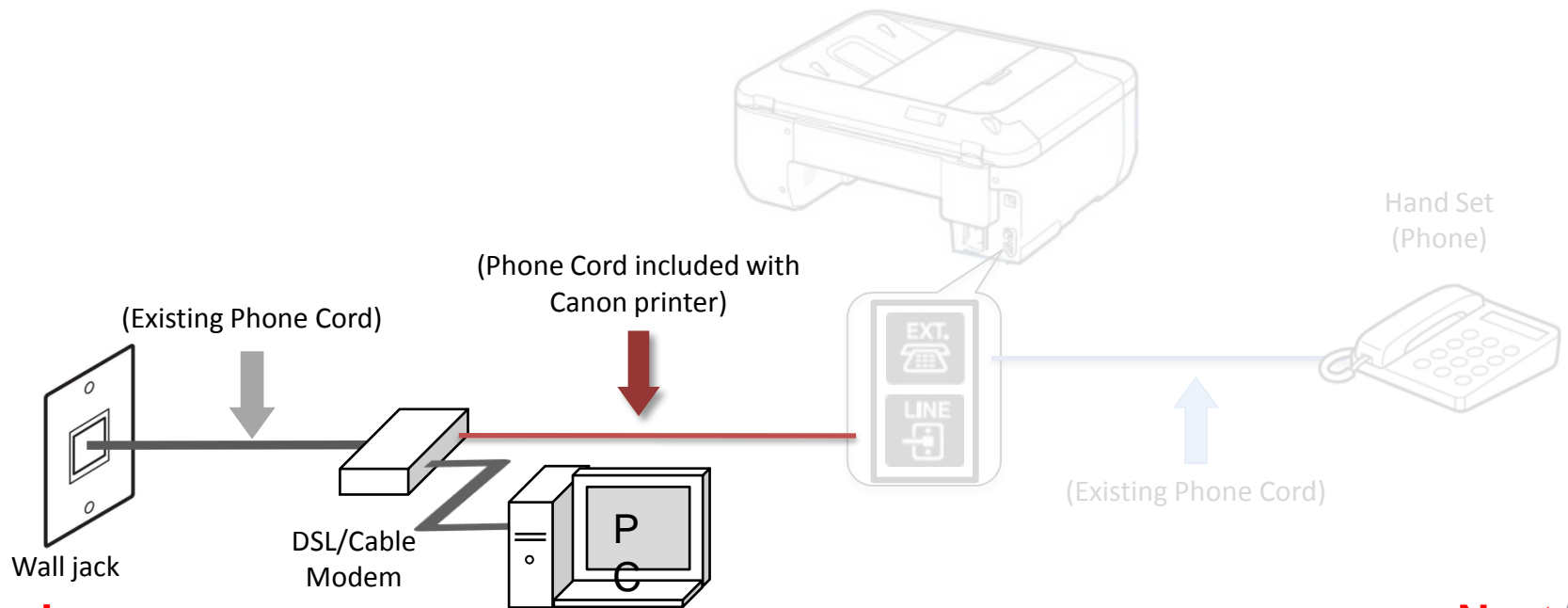


[Previous](#)

[Next](#)

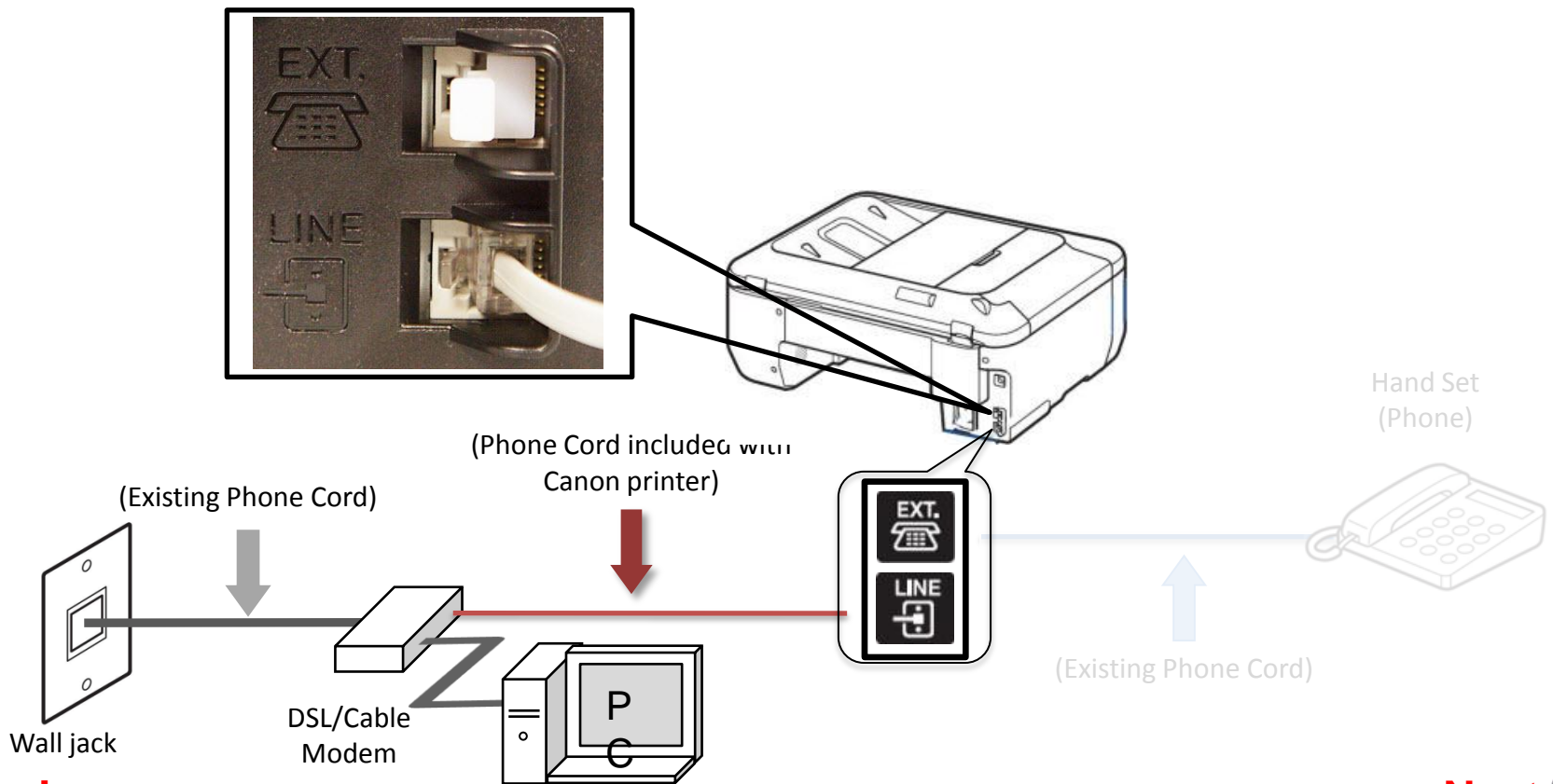
Fax to Phone Line Connection

- Plug the provided phone cord into the DSL/Cable Modem.



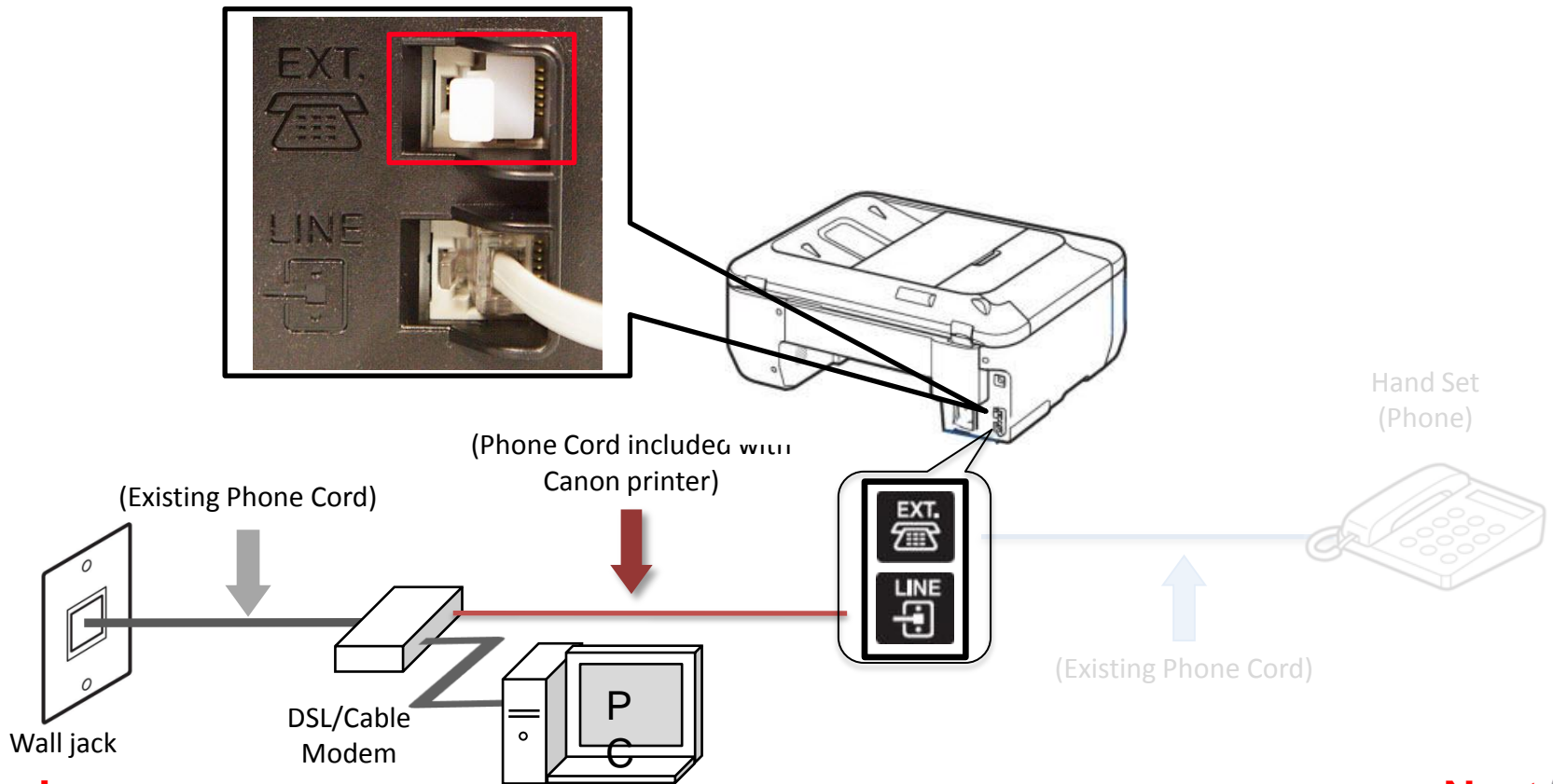
Fax to Phone Line Connection

- Plug the provided phone cord into the “LINE” jack located on the rear of the multifunction.



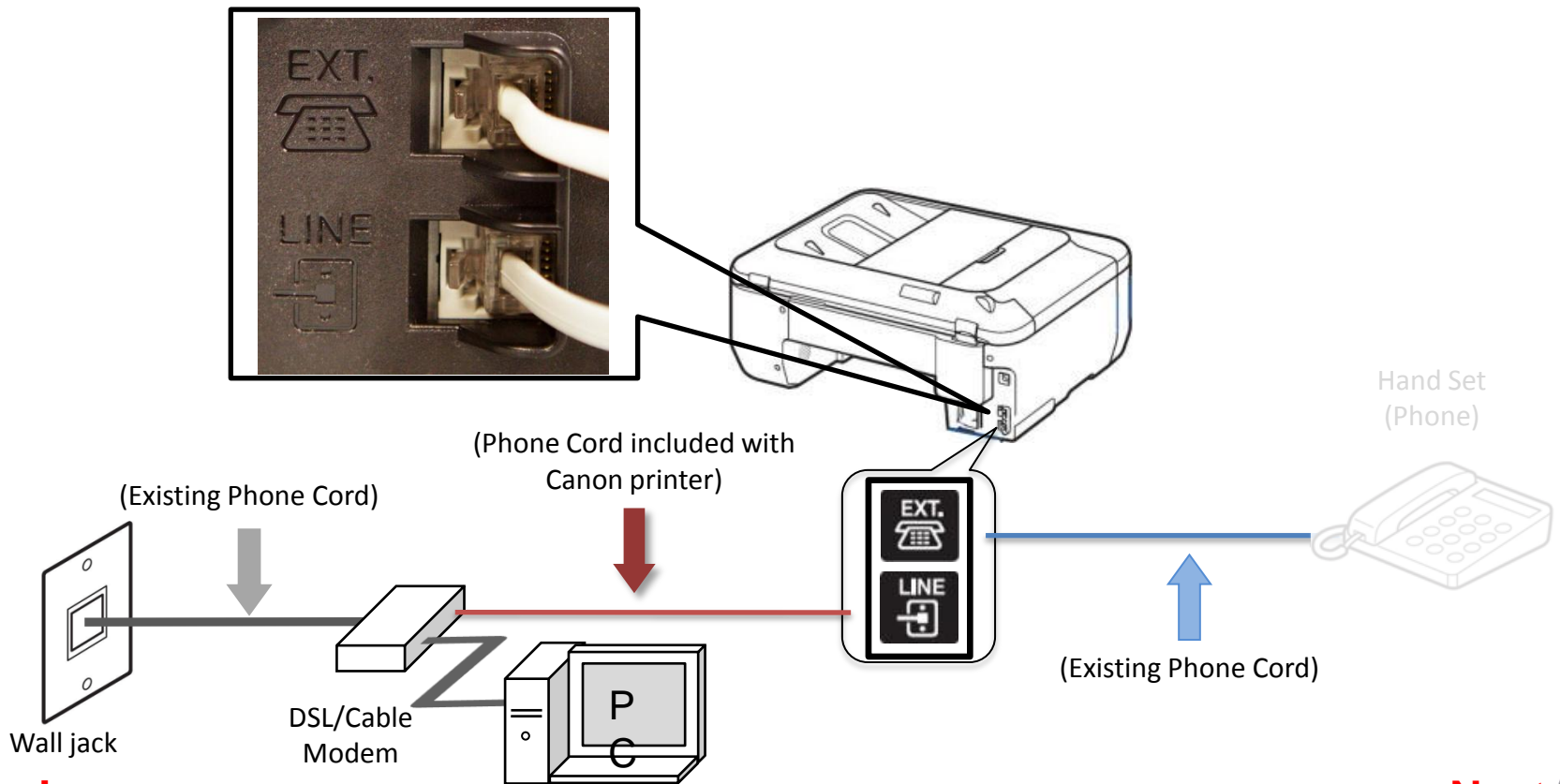
Fax to Phone Line Connection

- Remove the white plug from the upper jack labeled "EXT."



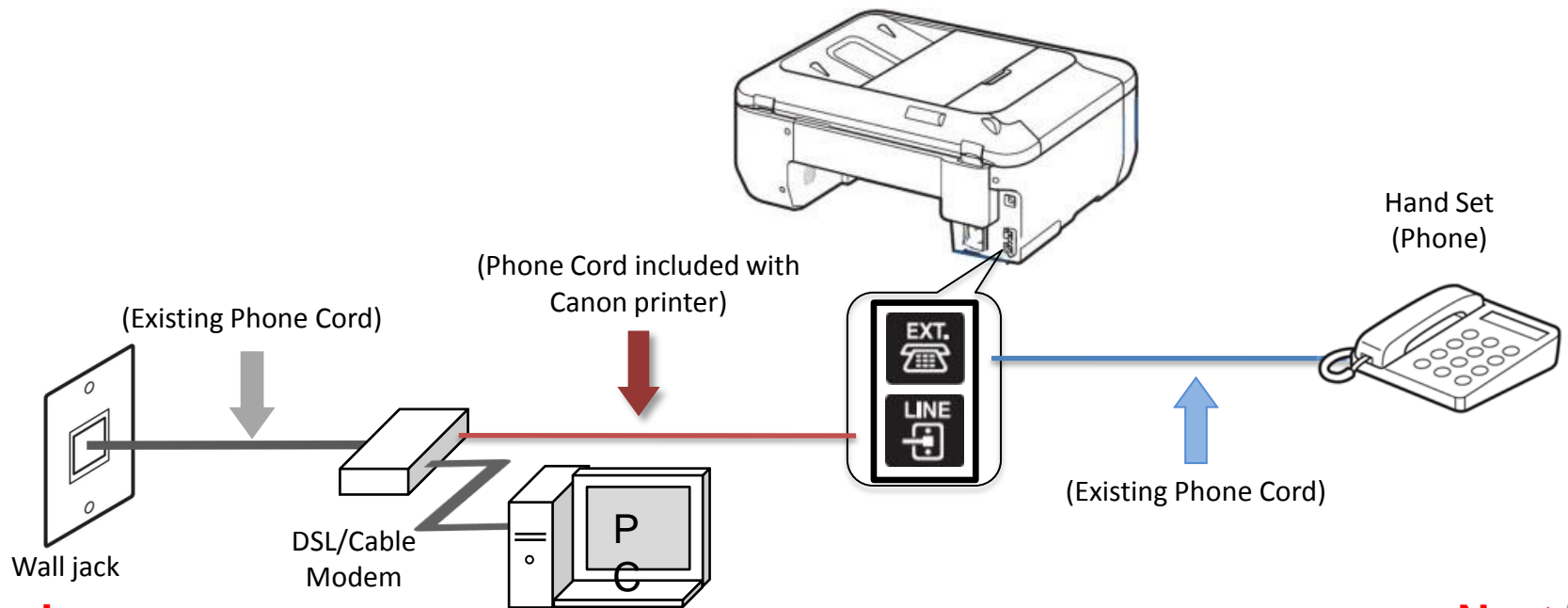
Fax to Phone Line Connection

- Plug the second phone cord into the “EXT.” jack located on the rear of the multifunction



Fax to Phone Line Connection

- Plug the second phone cord into the phone.



Setting Up The Receive Mode

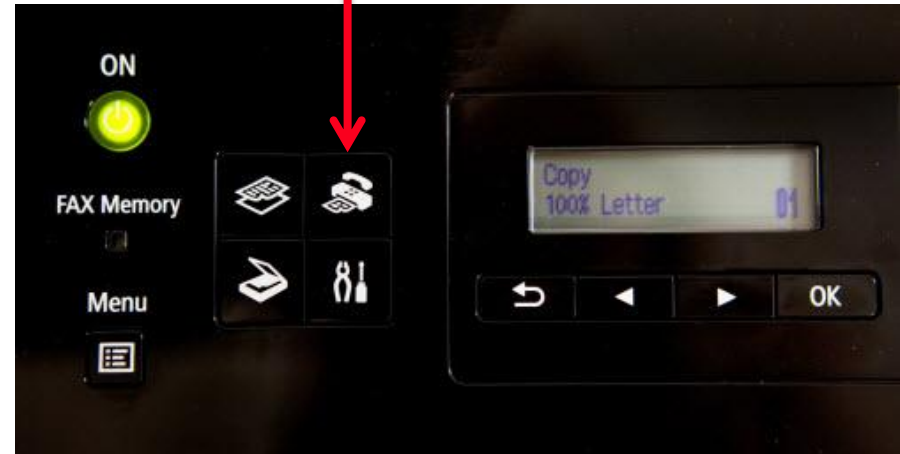
Step 1

Turn on the MX432 by pressing the **ON** button.



Step 2

Press the **FAX** button.



Step 3

The fax standby screen will appear.



Step 4

Press the **Menu** button.



Step 5

The **FAX menu** screen will appear.



Step 6

Use the **LEFT** or **RIGHT** button to select "Receive mode set".



Step 7

Press the **OK** button.



Step 8

Use the **LEFT** or **RIGHT** button to select "TEL priority mode".



Step 9

Press the **OK** button.



Step 10

Use the **LEFT** or **RIGHT** button to select "Yes" at **Make adv. settings** screen.



Step 11

Press the **OK** button.



Step 12

Use the **LEFT** or **RIGHT** button to select "User-friendly RX".



Step 13

Press the **OK** button.



Step 14

Use the **LEFT** or **RIGHT** button to select "ON".



Step 15

Press the **OK** button.



Step 16

You will return to the “Fax standby screen” and the receive mode will appear on the screen.



Receiving A Fax

To receive a fax:

- Pick up the handset on the phone connected to the MX432.
- Listen for fax tones.
- When the tones stop hang up the handset.
- The MX432 will receive the fax document.

To receive a fax while you are away:

- The answering machine will answer the call.
- If fax tones are heard by the MX432 it will take over the call and receive the fax document.

IMPORTANT: In order to receive a fax, you must either pick up the handset on a phone that is connected to the MX432 or let your answering machine answer the call.

