

## Setting Up Your MX432 In Default Mode (Tel Priority Mode) With An Answering Machine

# Fax Easy Setup

Click [Next](#) to step through this image-friendly version of **Fax Easy Setup**.

---

If you started **Fax Easy Setup**, on the fax machine's operation panel, and prefer to go through this image-friendly version...

## Step 1

Press the FAX button at any screen to go to fax standby mode.

---



## Step 2

Click [Next](#) to proceed through the setup.

---



# Connecting The Phone Lines

# Connecting Your Phone/Answering Machine

Is your answering machine built into your phone?

**YES**

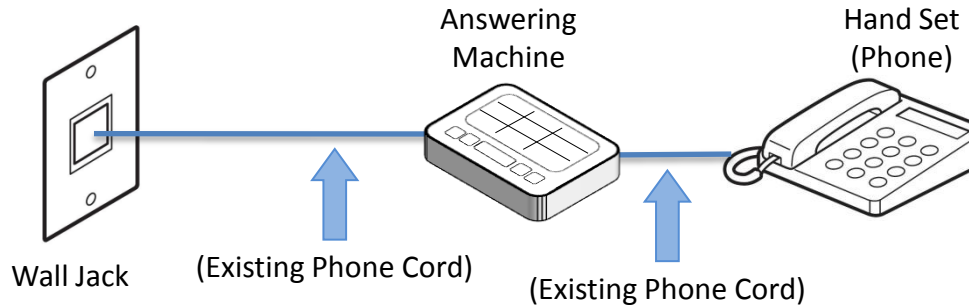
Click Here or Go To [Page 13](#)

**NO**

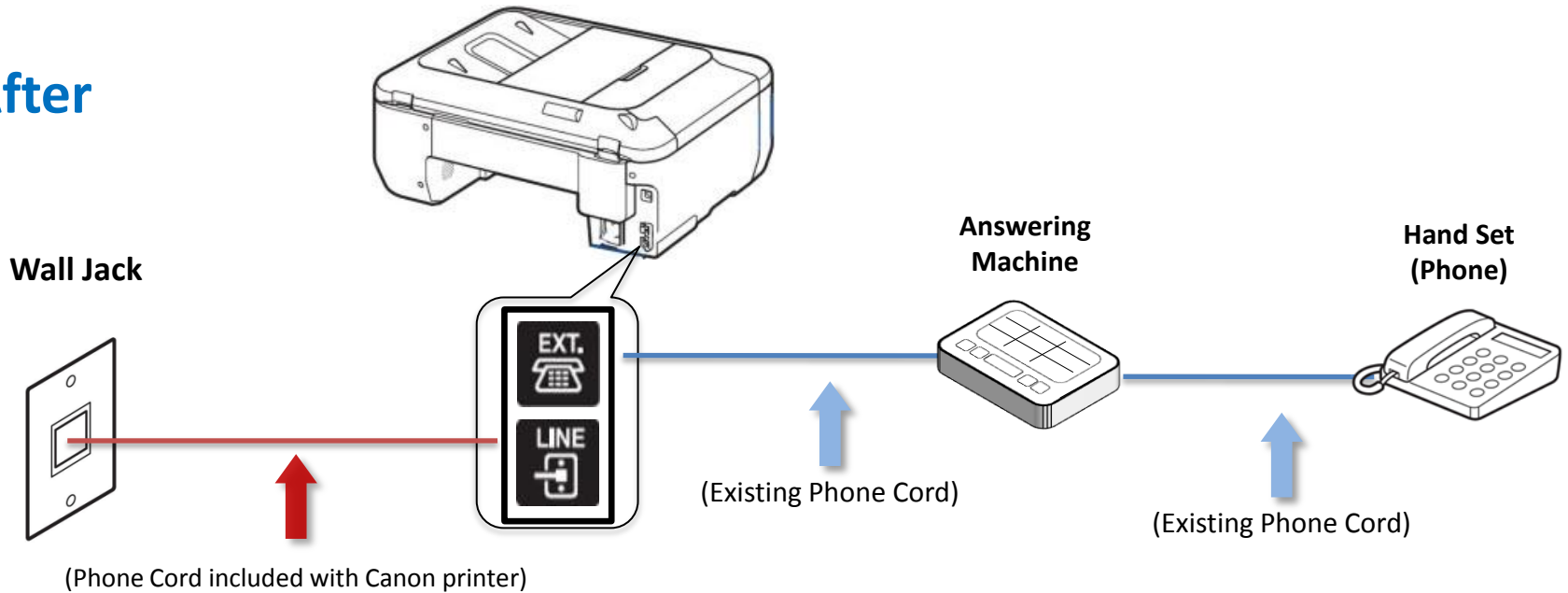
Click the Next Button

# Fax to Phone Line Connection

## Before

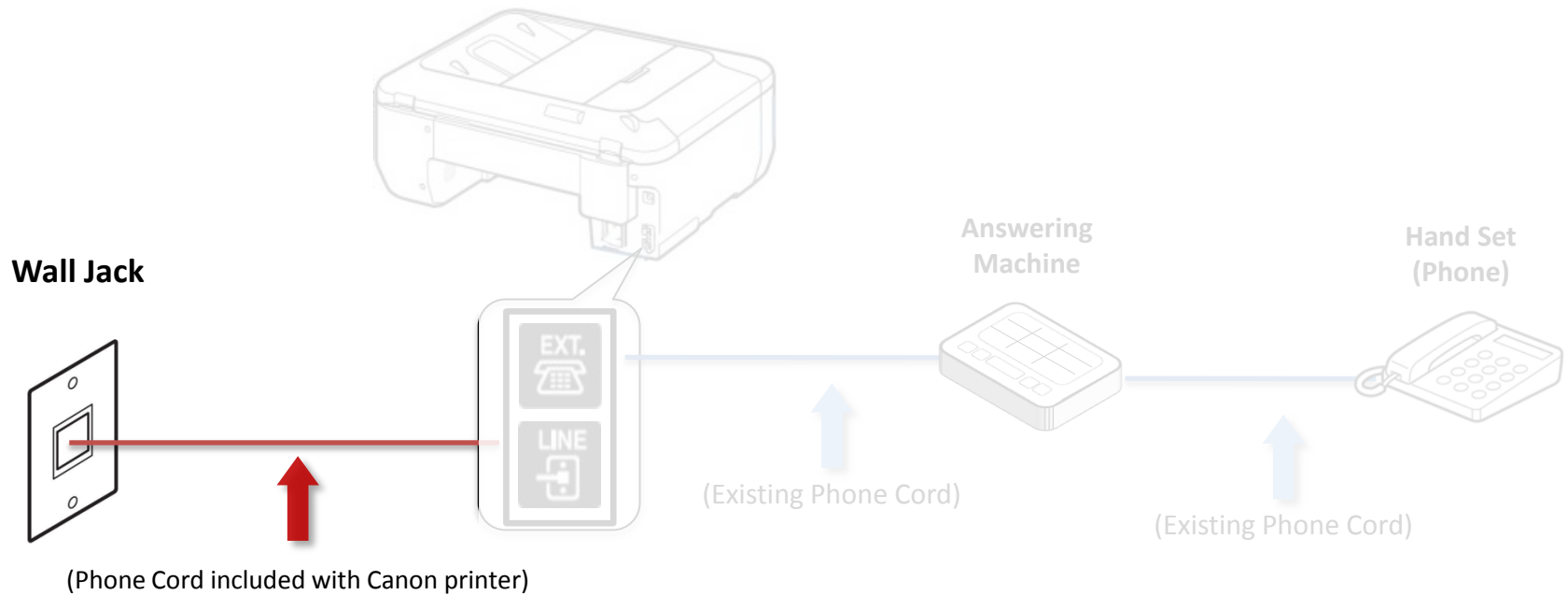


## After



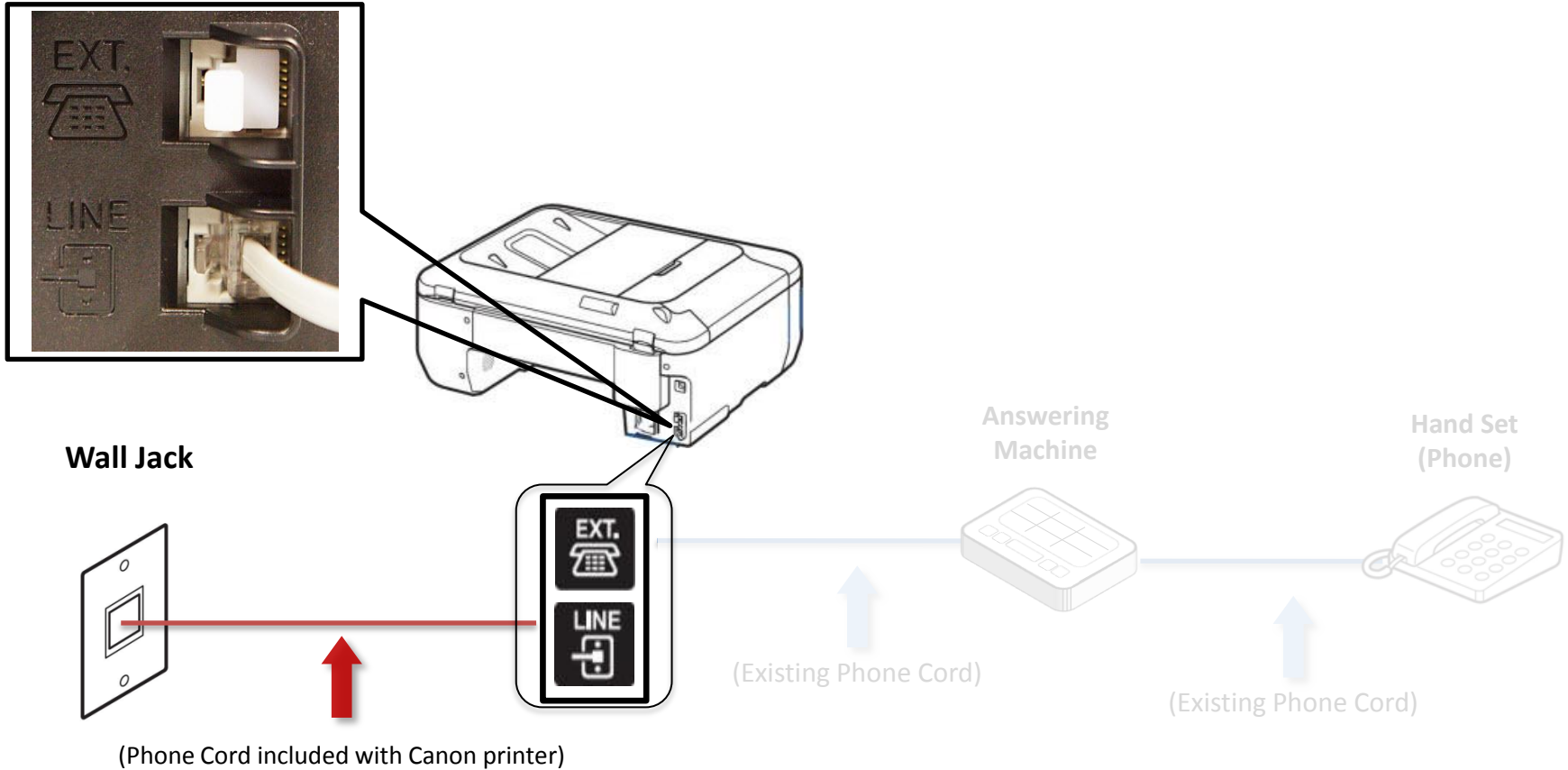
# Fax to Phone Line Connection

- Plug the provided phone cord into the wall jack



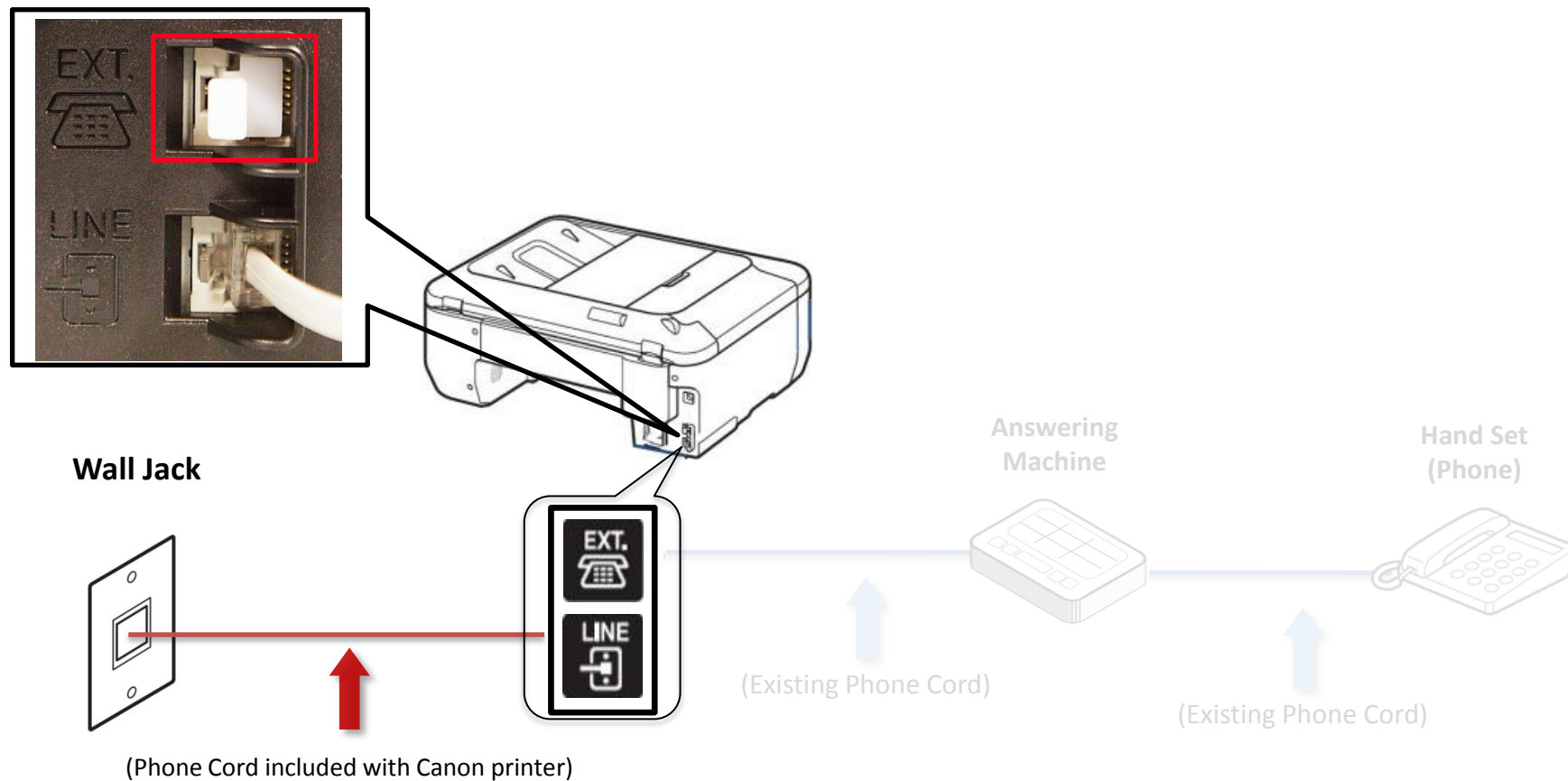
# Fax to Phone Line Connection

- Plug the provided phone cord into the “LINE” jack located on the rear of the multifunction.



# Fax to Phone Line Connection

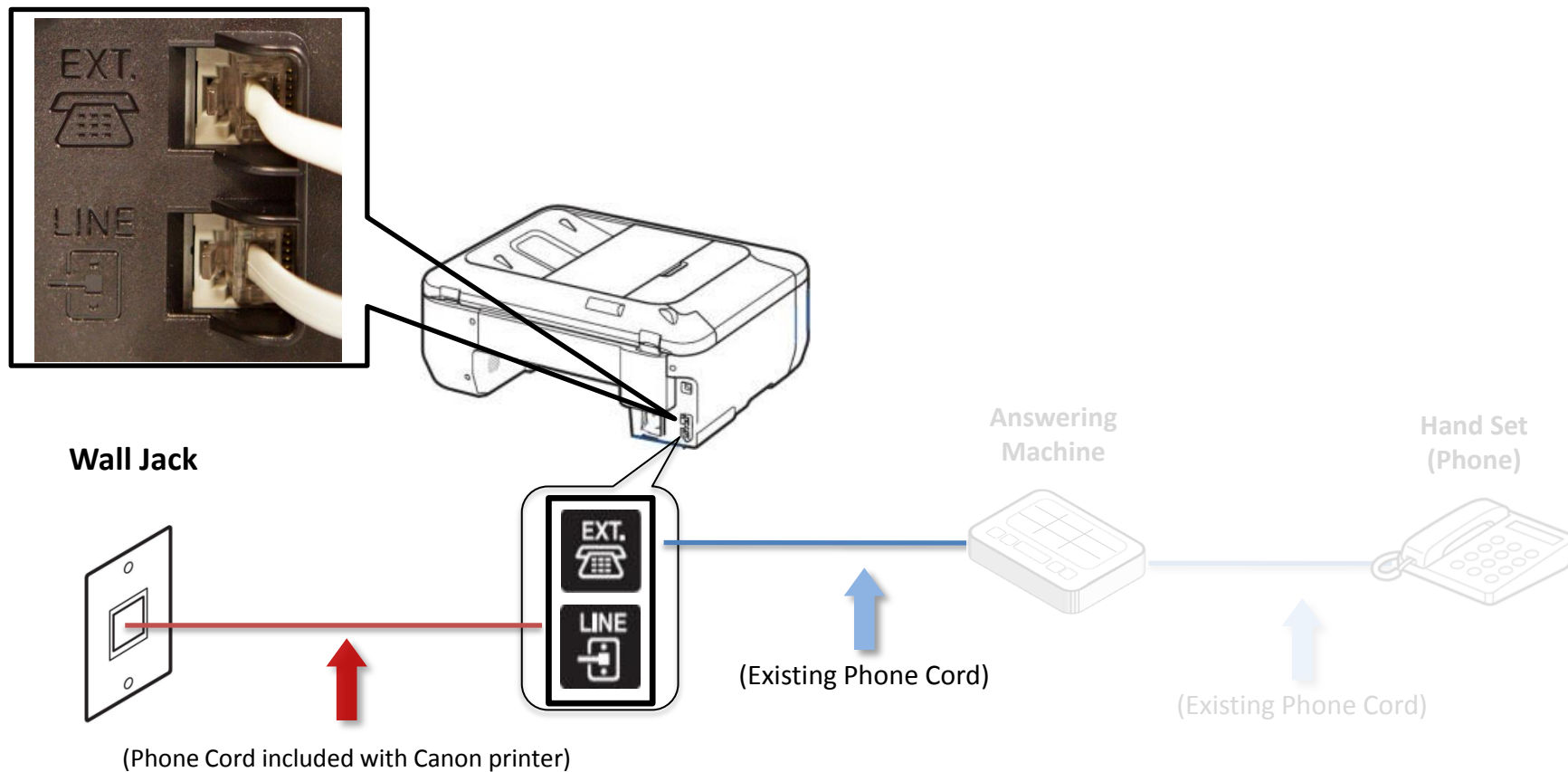
- Remove the white plug from the upper jack labeled "EXT."





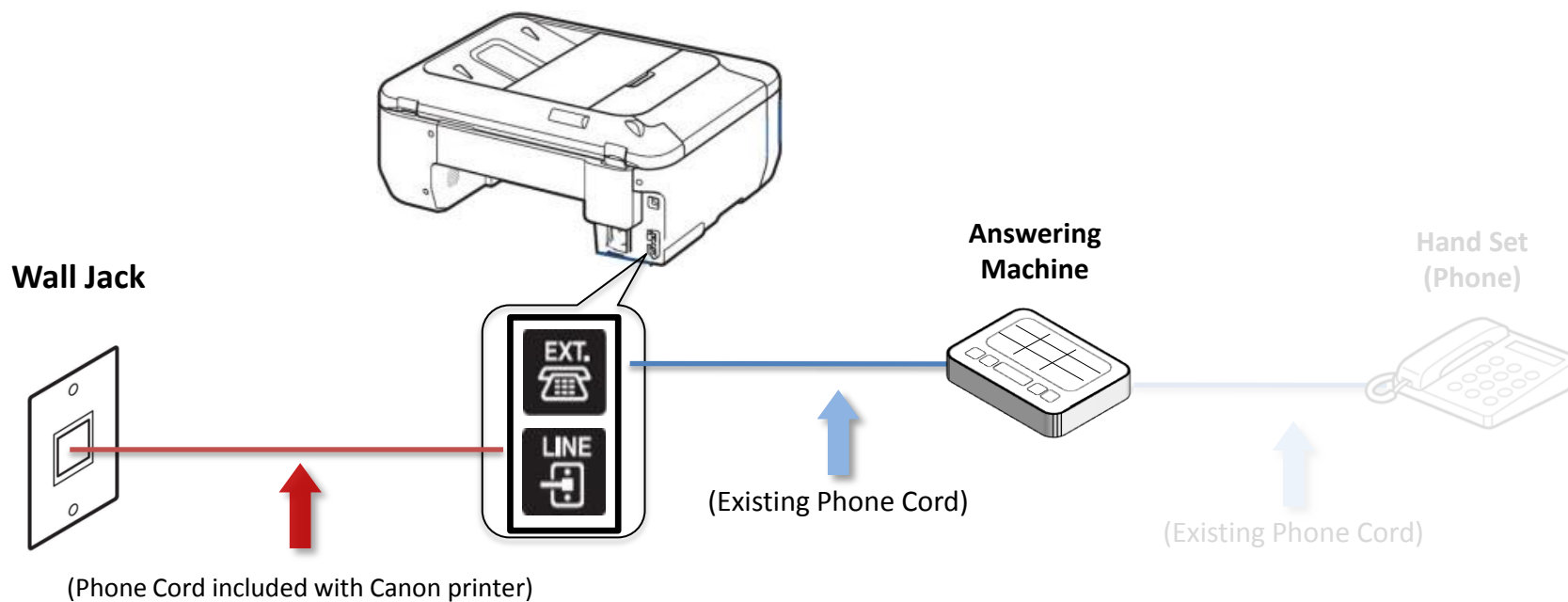
# Fax to Phone Line Connection

- Plug the second phone cord into the “EXT.” jack located on the rear of the multifunction



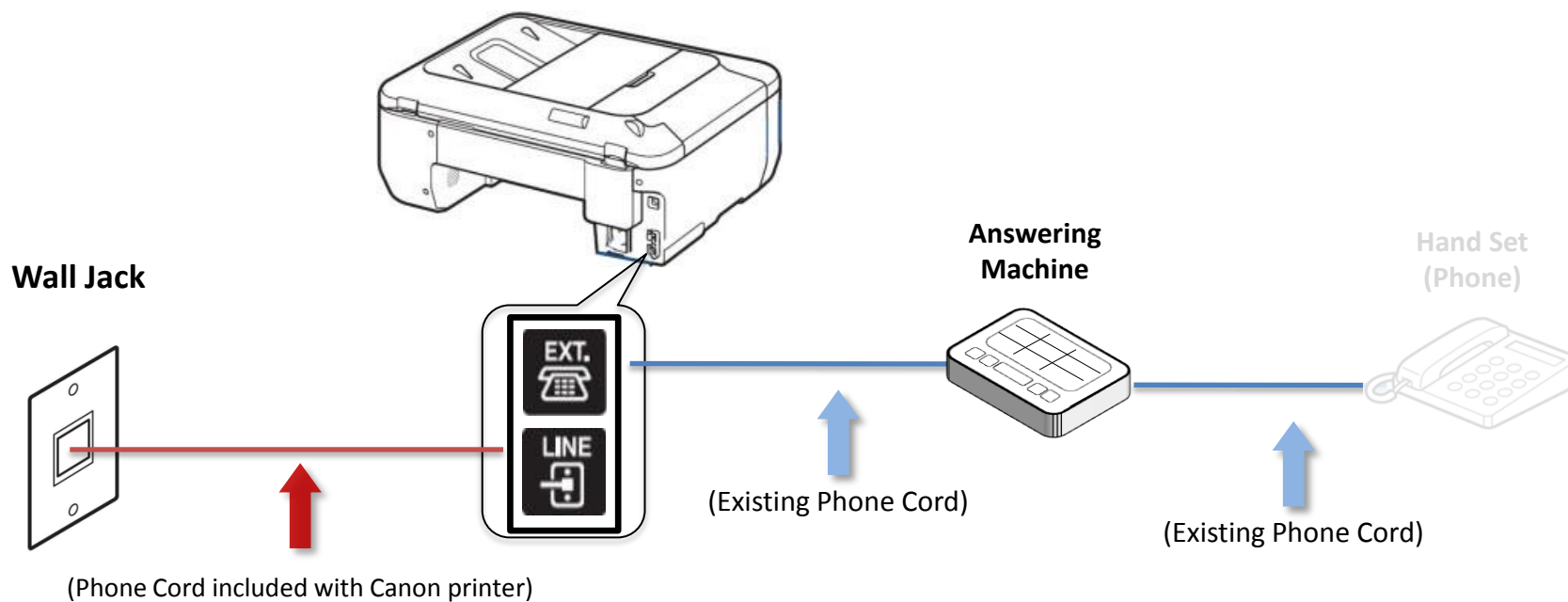
# Fax to Phone Line Connection

- Plug the second phone cord into the answering machine.



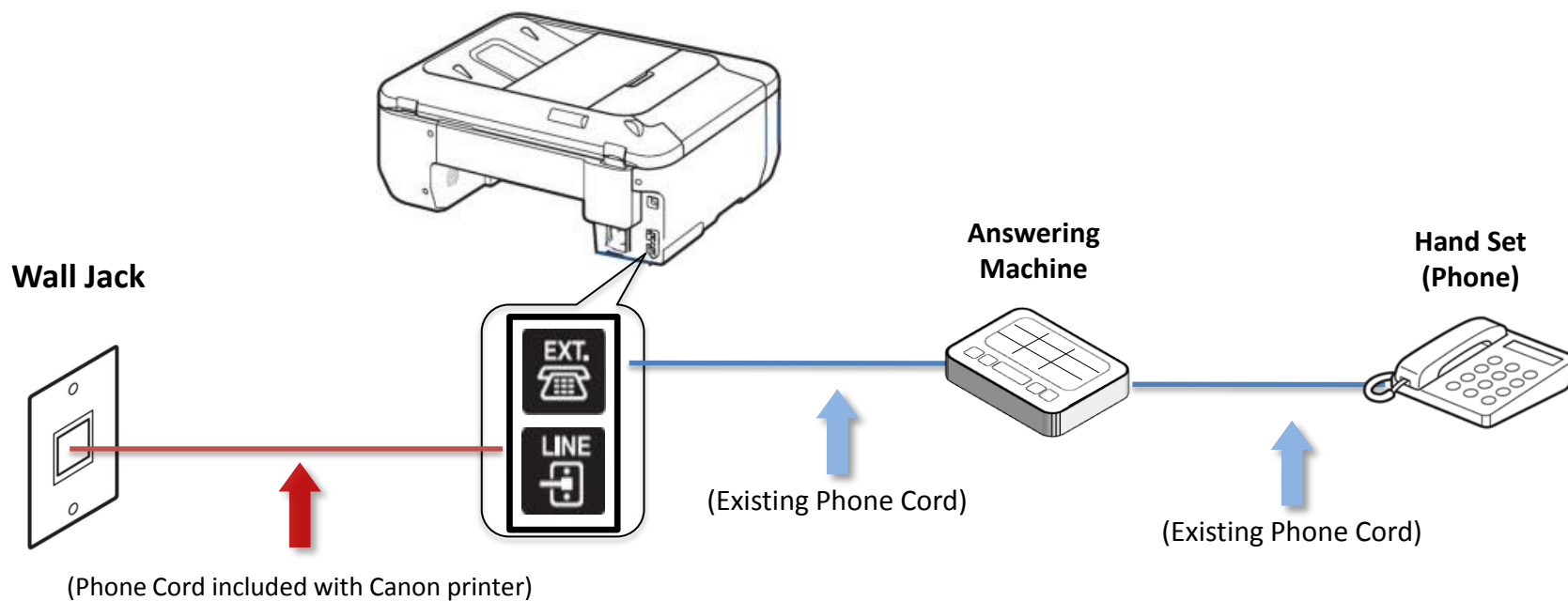
# Fax to Phone Line Connection

- Plug the third phone cord into the answering machine.



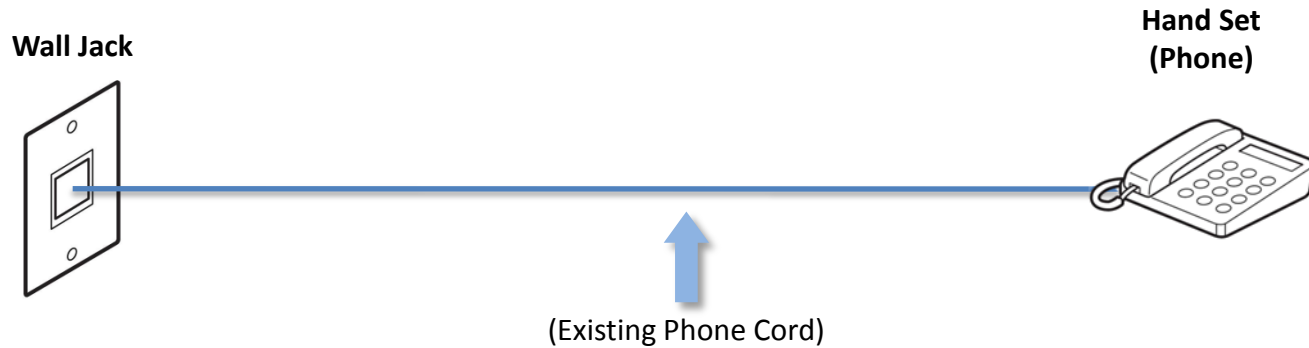
# Fax to Phone Line Connection

- Plug the third phone cord into the phone.

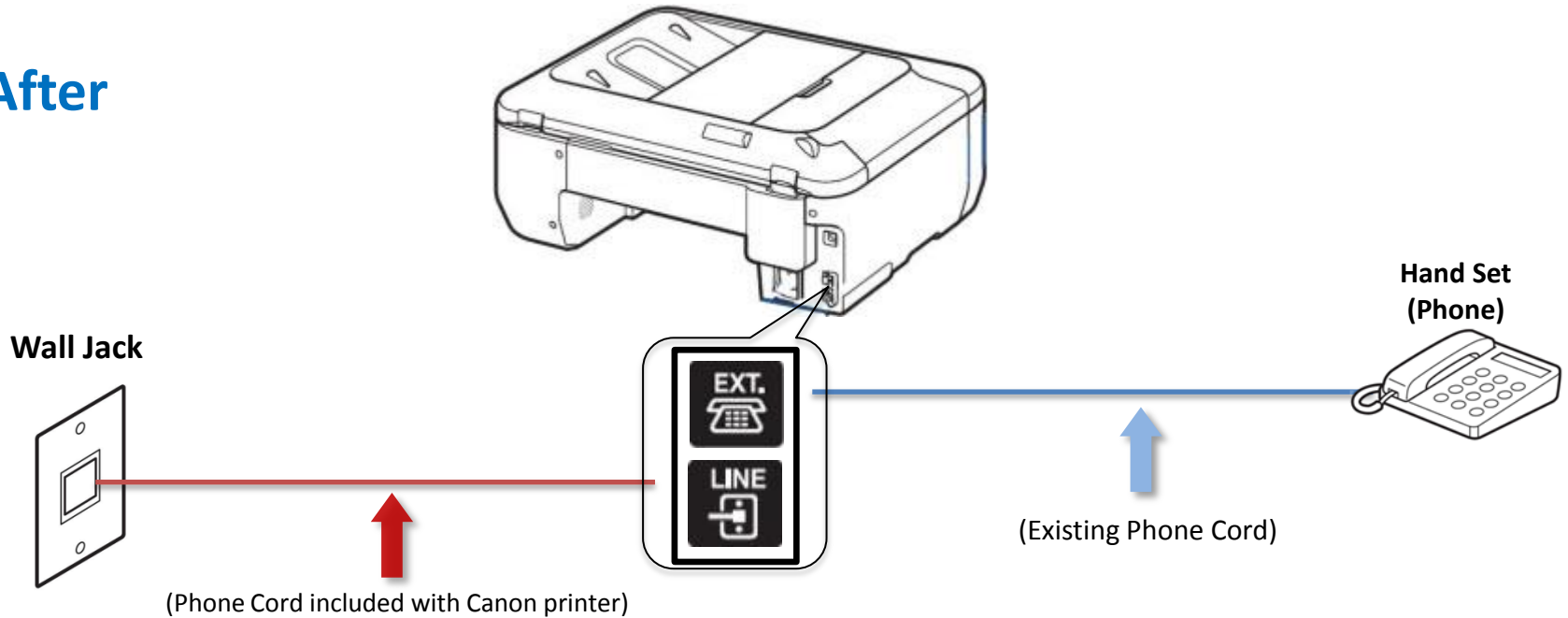


# Fax to Phone Line Connection

**Before**

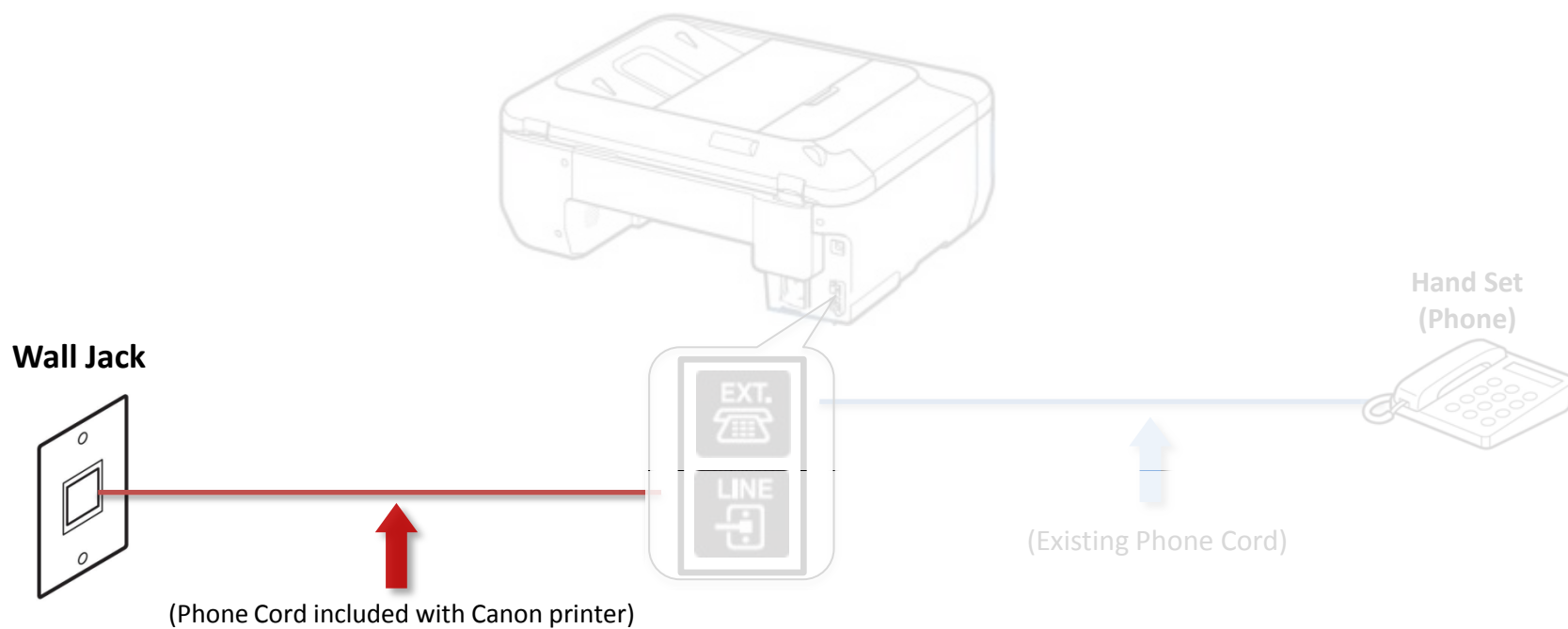


**After**



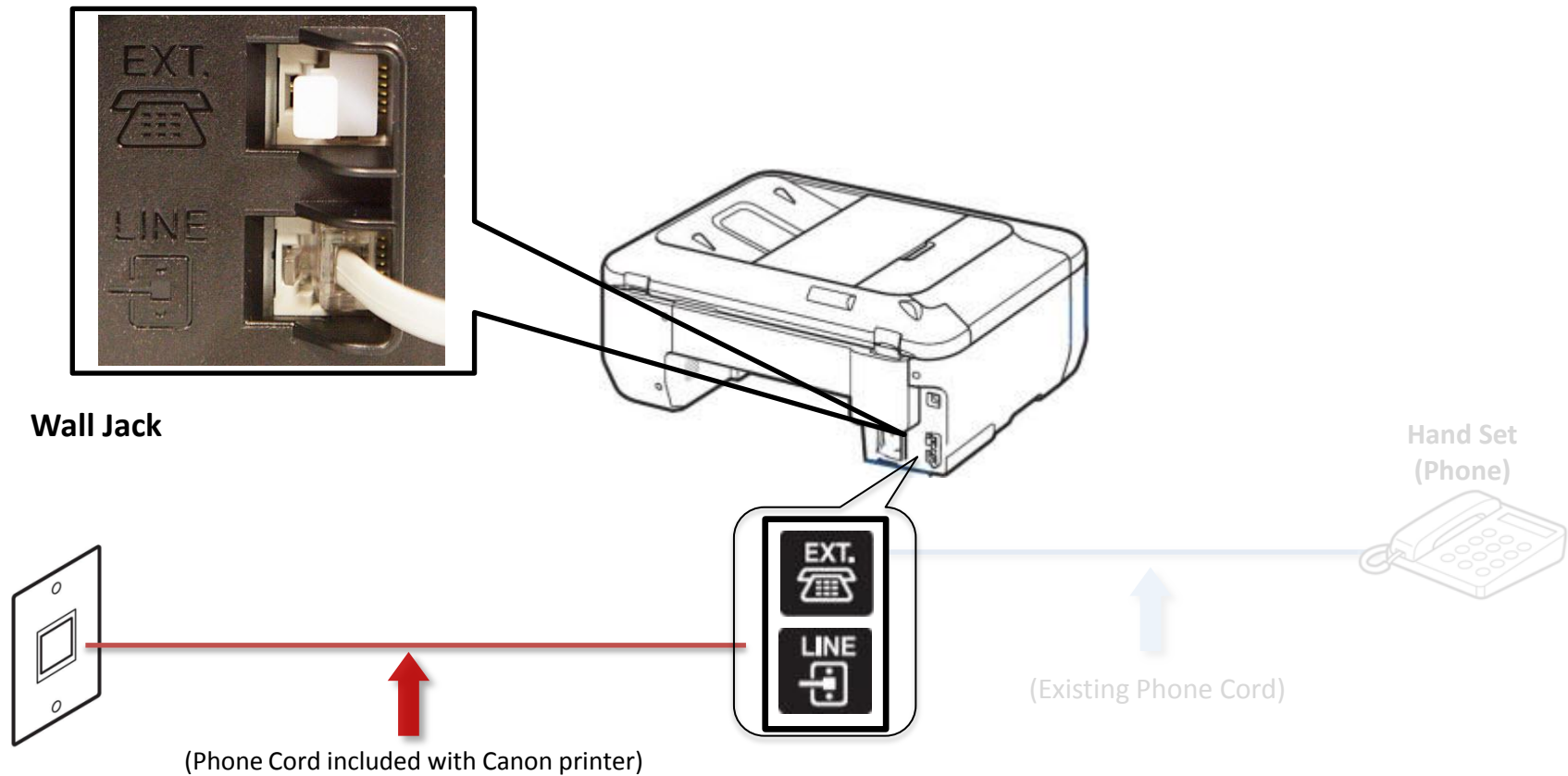
# Fax to Phone Line Connection

- Plug the provided phone cord into the wall jack



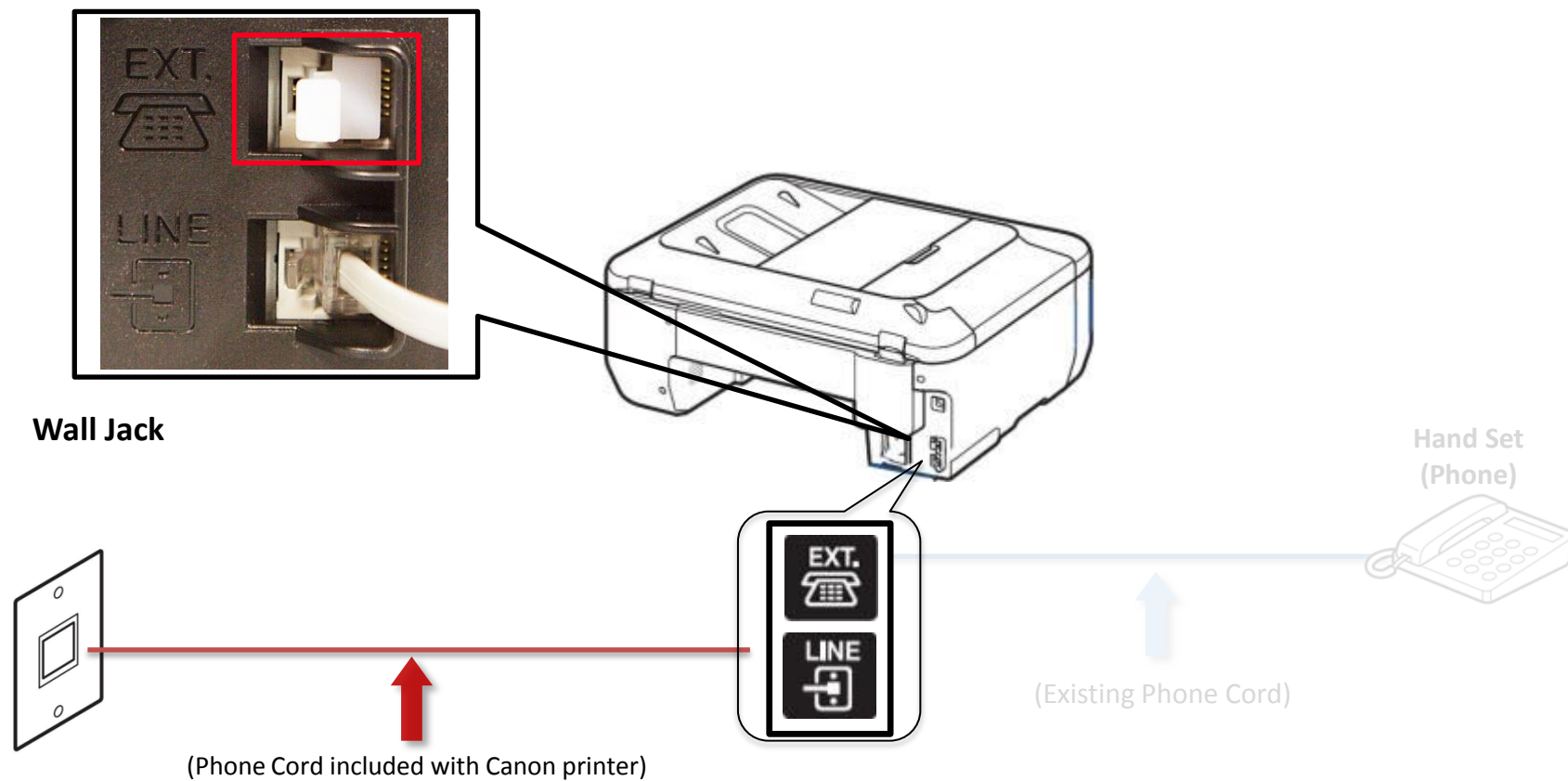
# Fax to Phone Line Connection

- Plug the provided phone cord into the “LINE” jack located on the rear of the multifunction



# Fax to Phone Line Connection

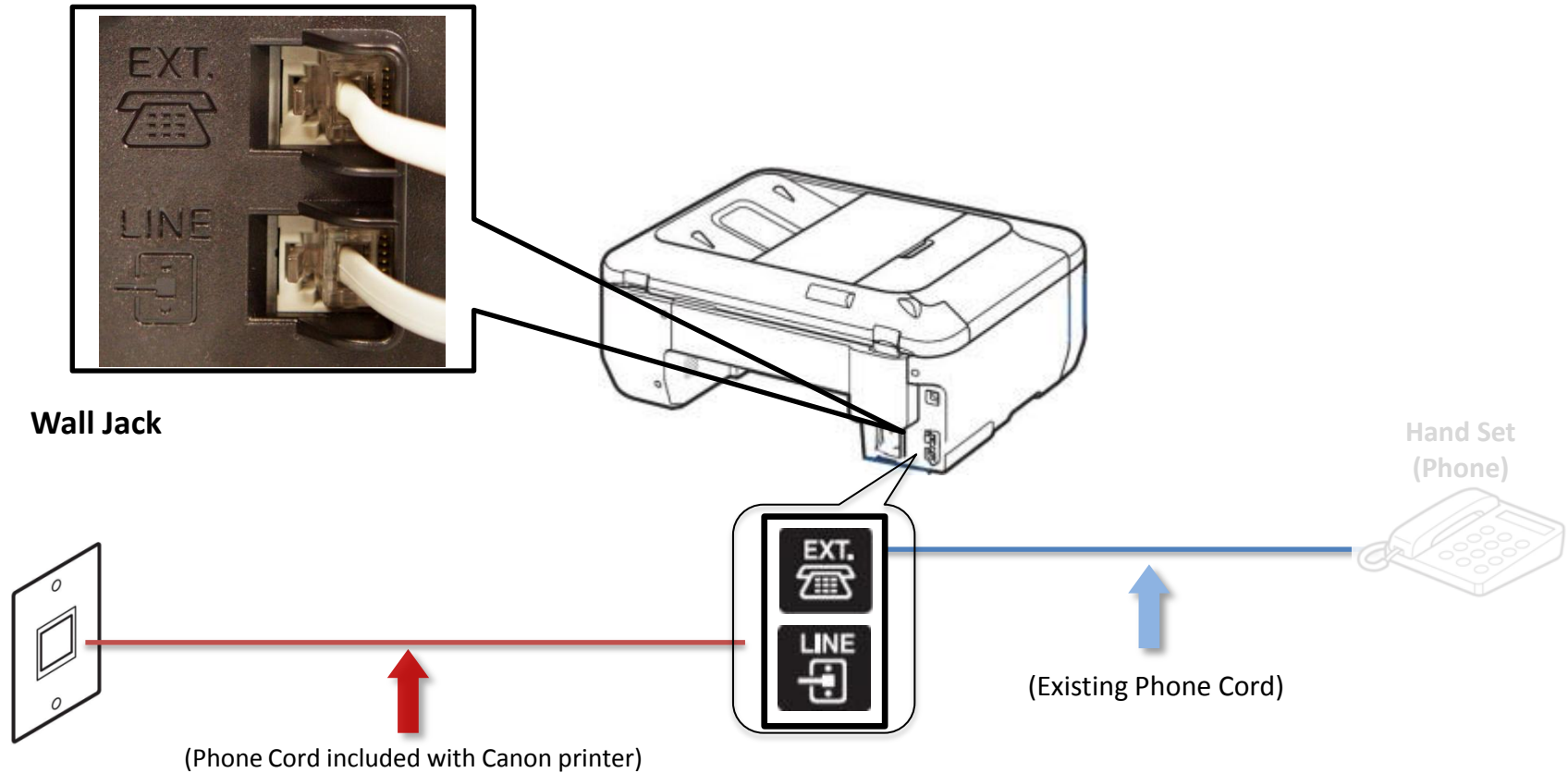
- Remove the white plug from the upper jack labeled "EXT."





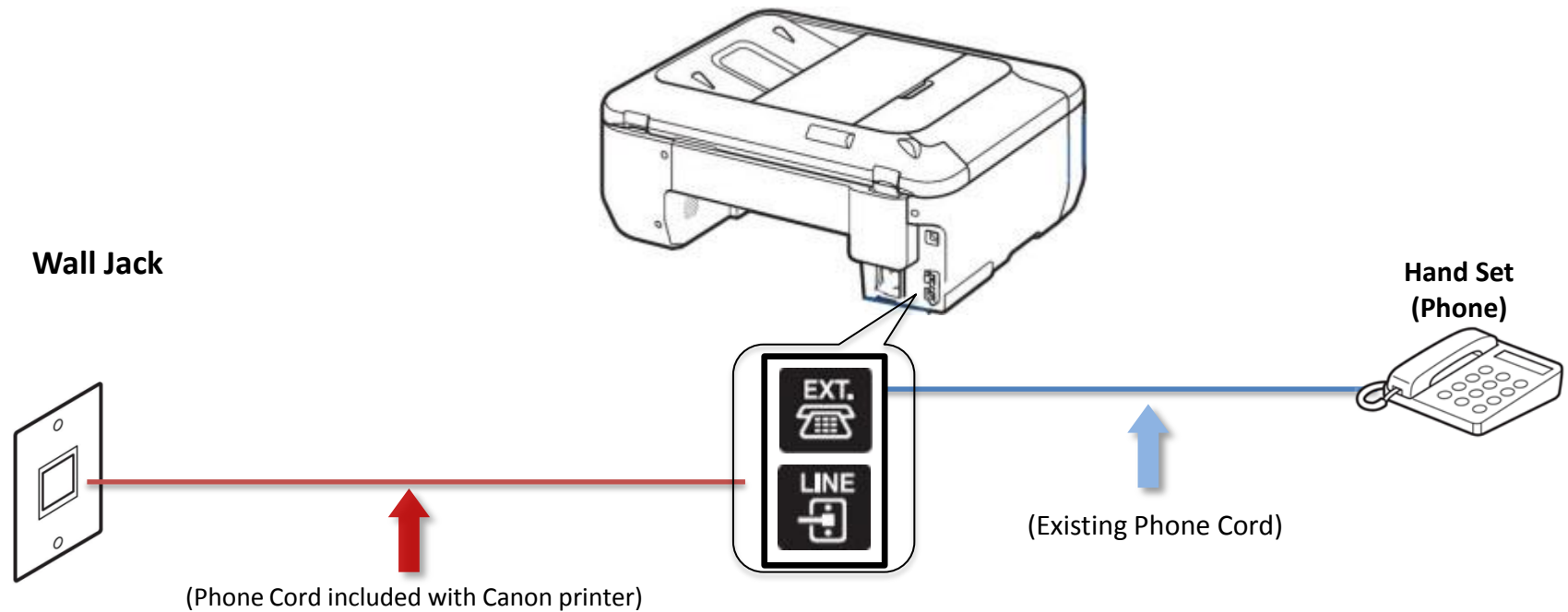
# Fax to Phone Line Connection

- Plug the second phone cord into the “EXT.” jack located on the rear of the multifunction



# Fax to Phone Line Connection

- Plug the second phone cord into the phone



# Setting Up The Receive Mode

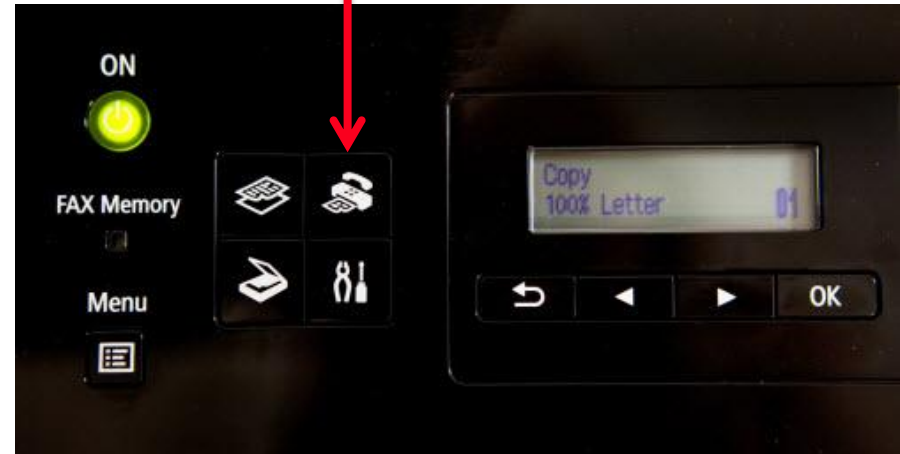
## Step 1

Turn on the MX432 by pressing the **ON** button.



## Step 2

Press the **FAX** button.



## Step 3

The fax standby screen will appear.



## Step 4

Press the **Menu** button.



## Step 5

The **FAX menu** screen will appear.



## Step 6

Use the **LEFT** or **RIGHT** button to select "Receive mode set".



## Step 7

Press the **OK** button.



## Step 8

Use the **LEFT** or **RIGHT** button to select "TEL priority mode".



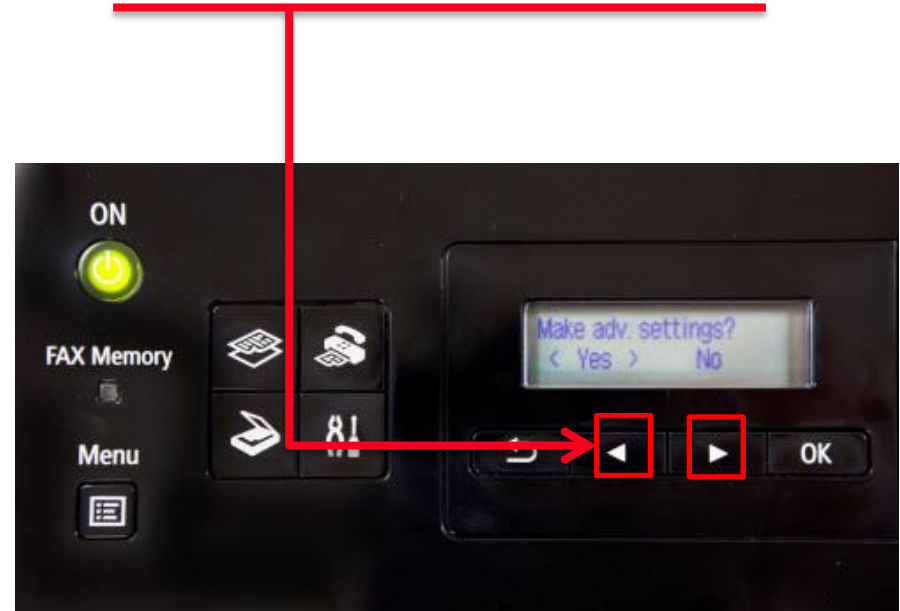
## Step 9

Press the **OK** button.



## Step 10

Use the **LEFT** or **RIGHT** button to select "Yes" at **Make adv. settings** screen.





## Step 11

Press the **OK** button.



## Step 12

Use the **LEFT** or **RIGHT** button to select "User-friendly RX".



## Step 13

Press the **OK** button.



## Step 14

Use the **LEFT** or **RIGHT** button to select "ON".



## Step 15

Press the **OK** button.



## Step 16

You will return to the “Fax standby screen” and the receive mode will appear on the screen.



# Receiving A Fax

To receive a fax:

- Pick up the handset on the phone connected to the MX432.
- Listen for fax tones.
- When the tones stop hang up the handset.
- The MX432 will receive the fax document.

To receive a fax while you are away:

- The answering machine will answer the call.
- If fax tones are heard by the MX432 it will take over the call and receive the fax document.

**IMPORTANT:** In order to receive a fax, you must either pick up the handset on a phone that is connected to the MX432 or let your answering machine answer the call.

