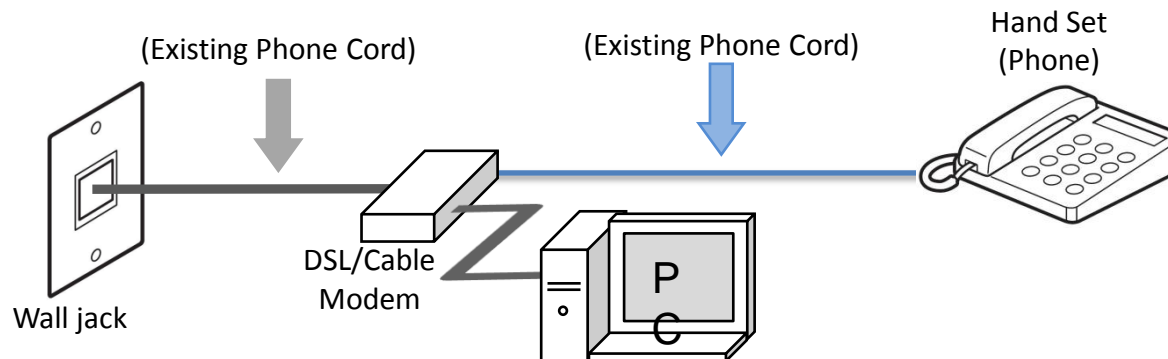


Setting Up Your MX420 In Default Mode (Tel Priority Mode) Without An Answering Machine DSL/Cable Modem Connection

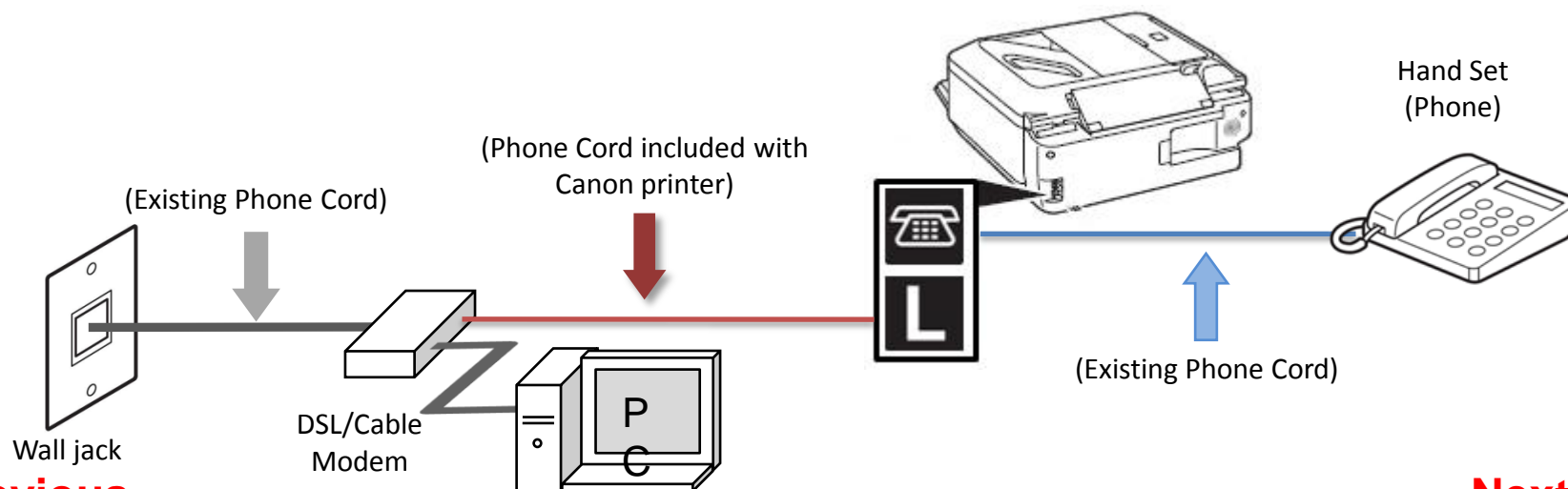
Connecting The Phone Lines

Fax to Phone Line Connection

Before



After



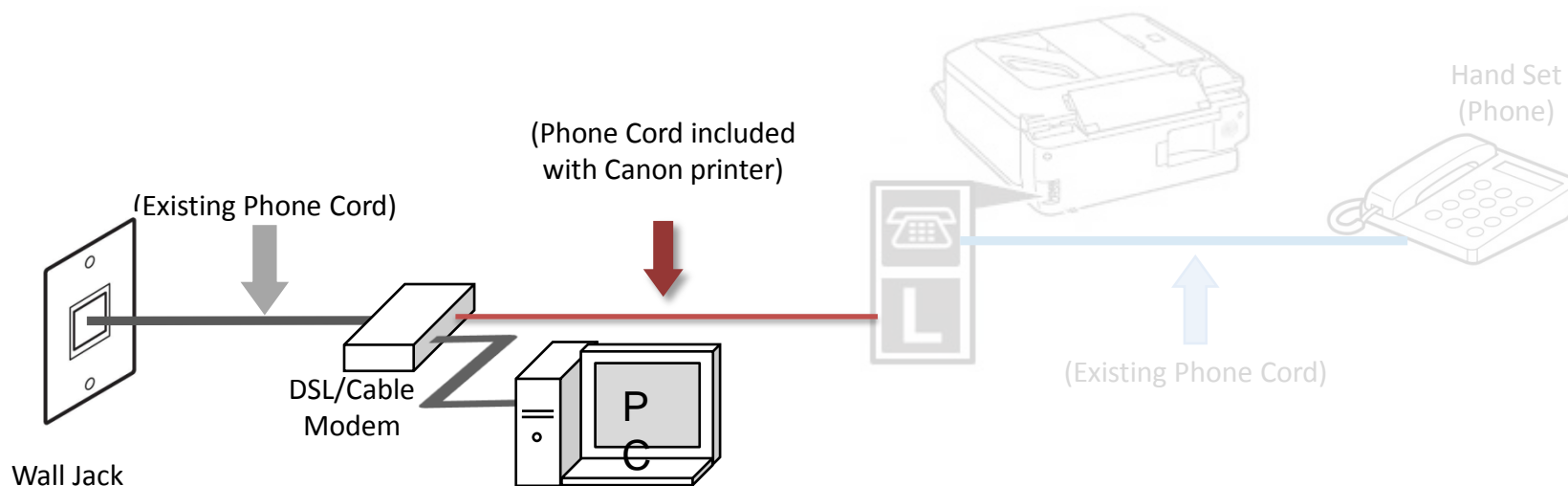
Previous

Next



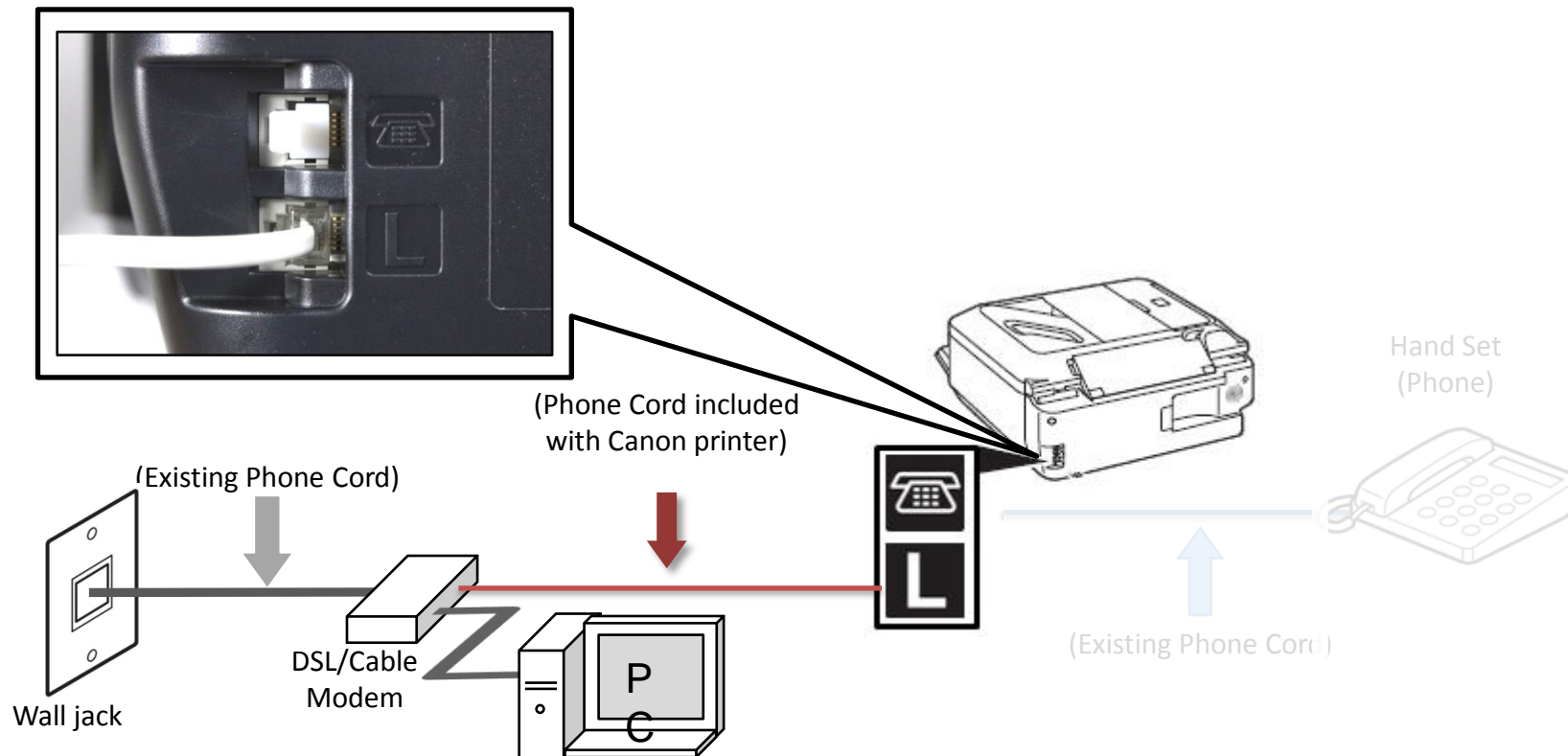
Fax to Phone Line Connection

- Plug the provided phone cord into the DSL/Cable Modem



Fax to Phone Line Connection

- Plug the provided phone cord into the “L” jack in the rear of the multifunction



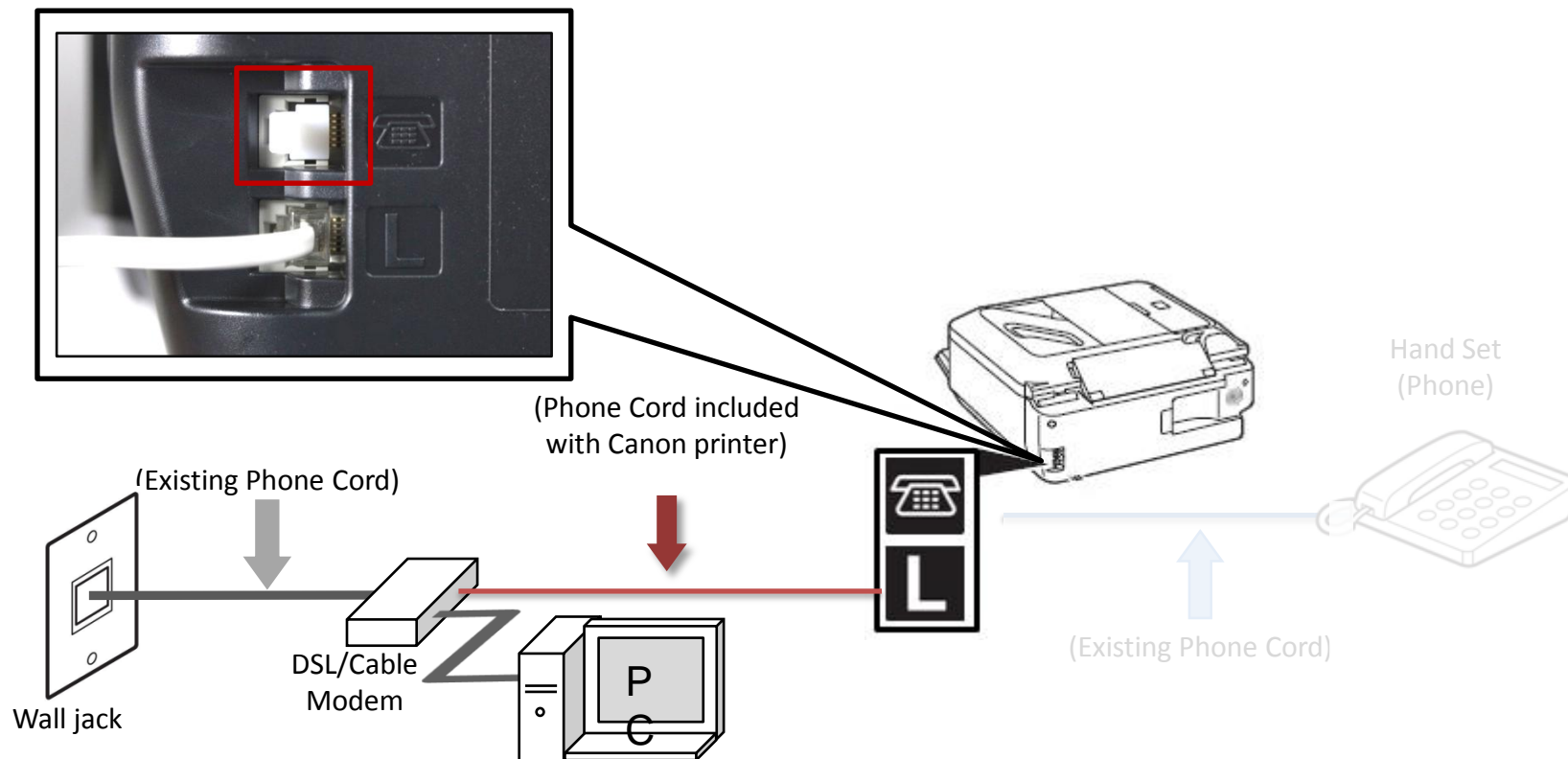
Previous

Next



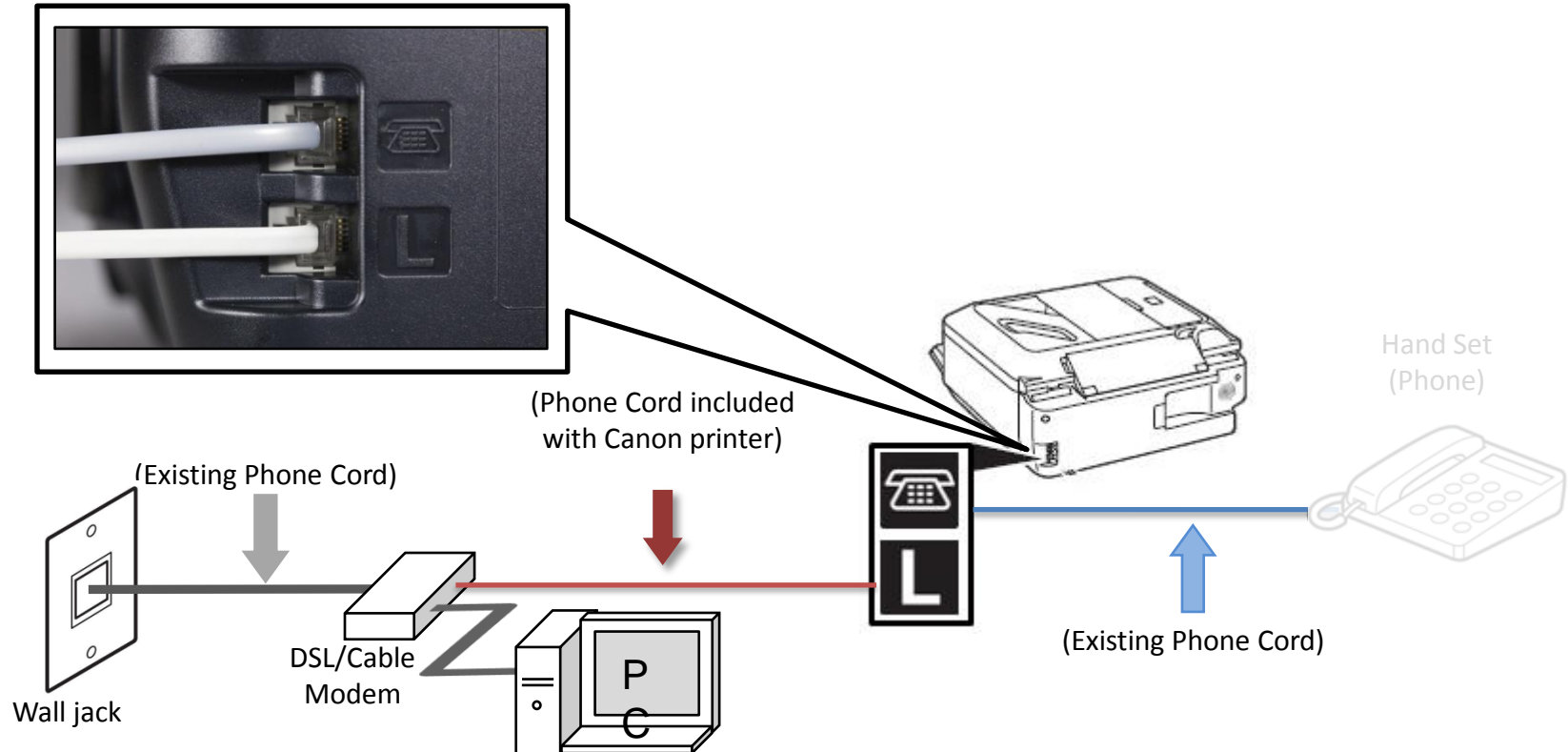
Fax to Phone Line Connection

- Remove the white plug (D) from the upper jack



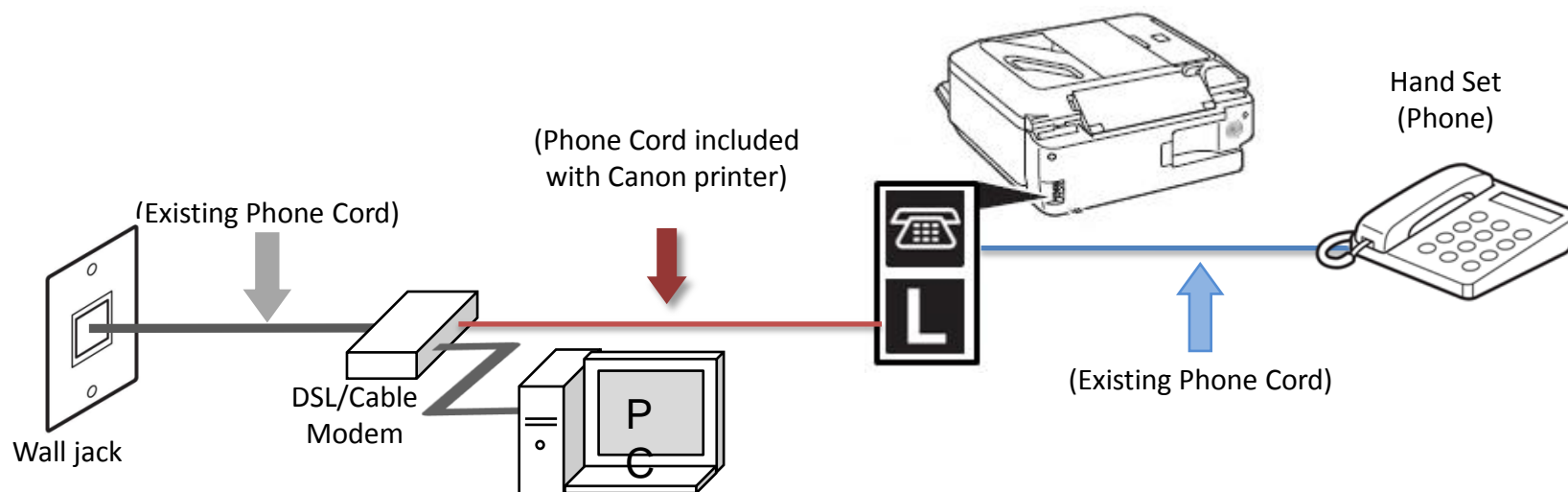
Fax to Phone Line Connection

- Plug the second phone cord into the “telephone” jack located on the rear of the multifunction



Fax to Phone Line Connection

- Plug the existing phone cord into the phone



Setting Up The Receive Mode

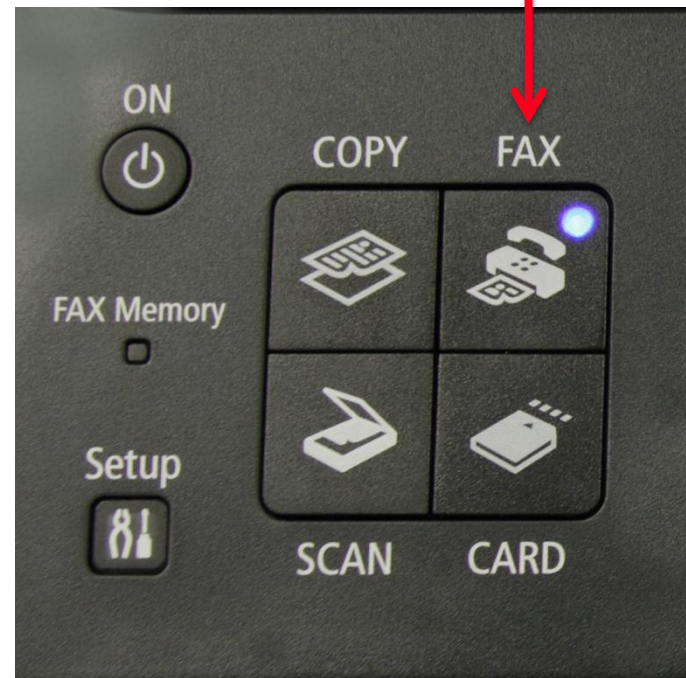
Step 1

Turn on the MX420 by pressing the **ON** button.



Step 2

Press the **FAX** button.



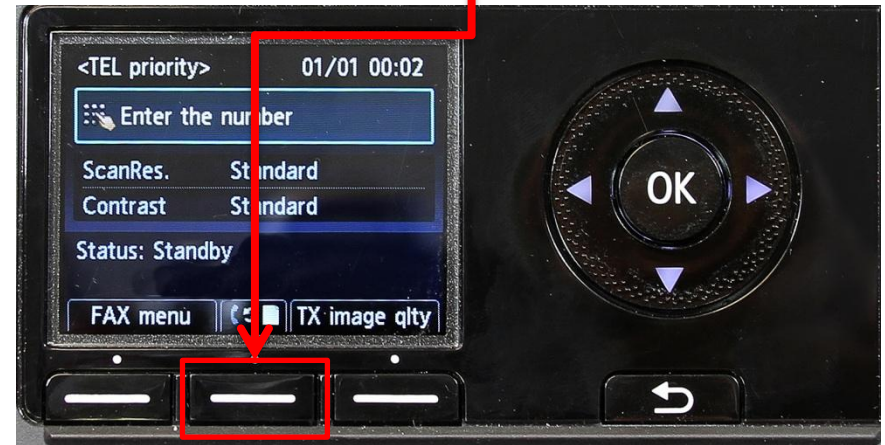
Step 3

The fax standby screen will appear.



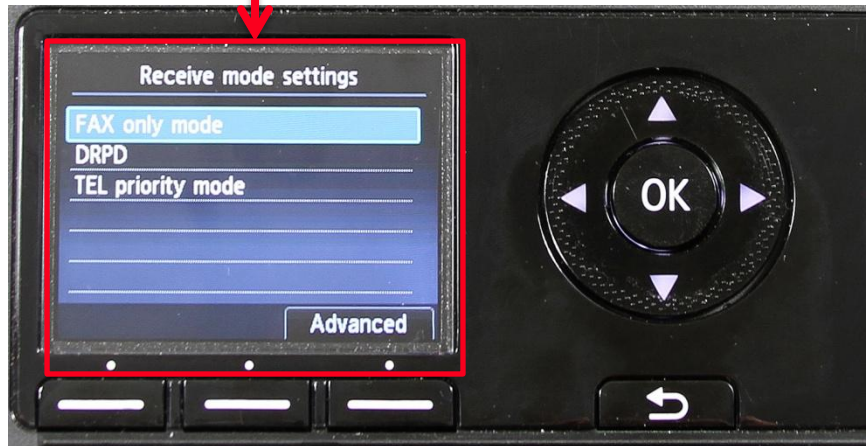
Step 4

Press the center **FUNCTION** button.



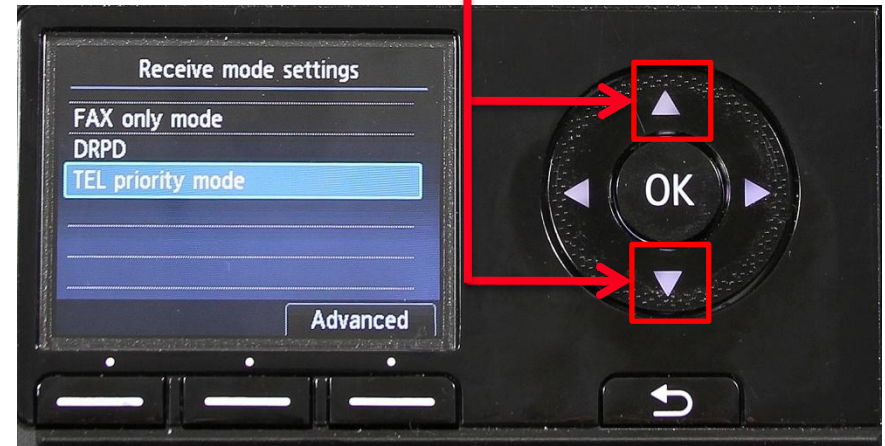
Step 5

The Receive mode settings screen will appear.



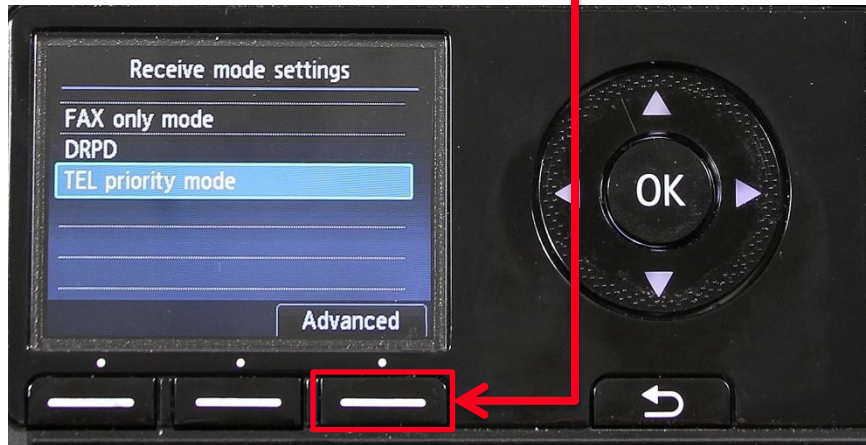
Step 6

Use the **UP** or **DOWN** button to select "TEL priority mode".



Step 7

Press the right **FUNCTION** button under the **Advanced** label



Step 8

Use the **UP** or **DOWN** button to select "User-friendly reception".



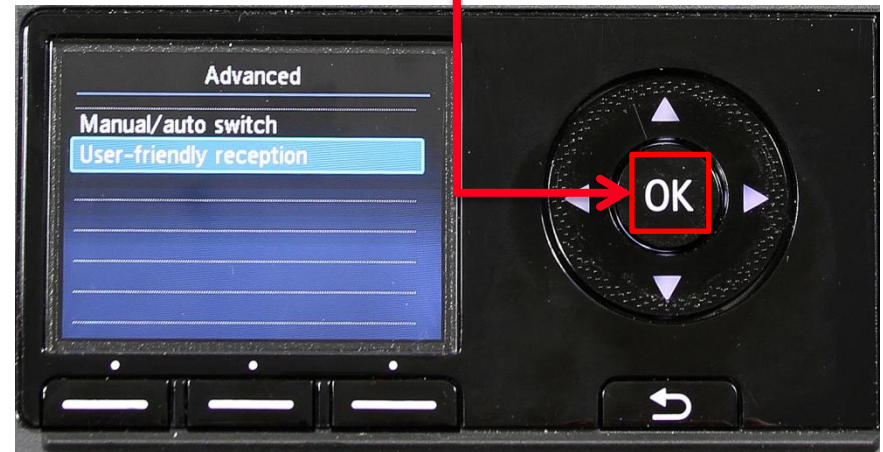
Step 9

Ensure “User-friendly reception” is selected



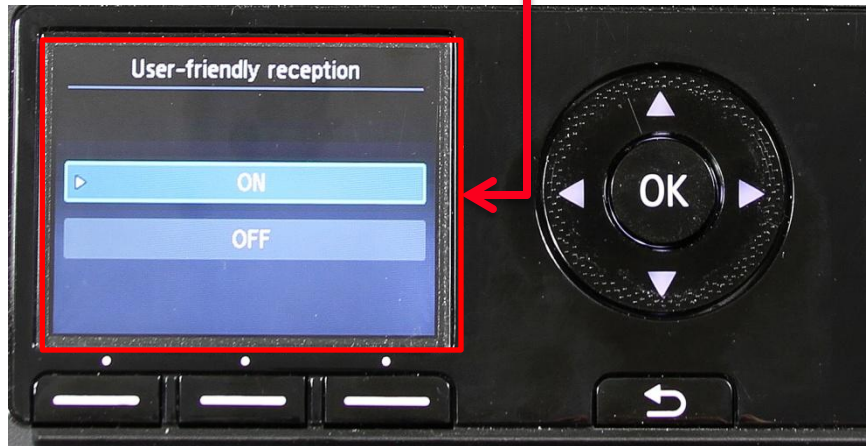
Step 10

Press the OK button



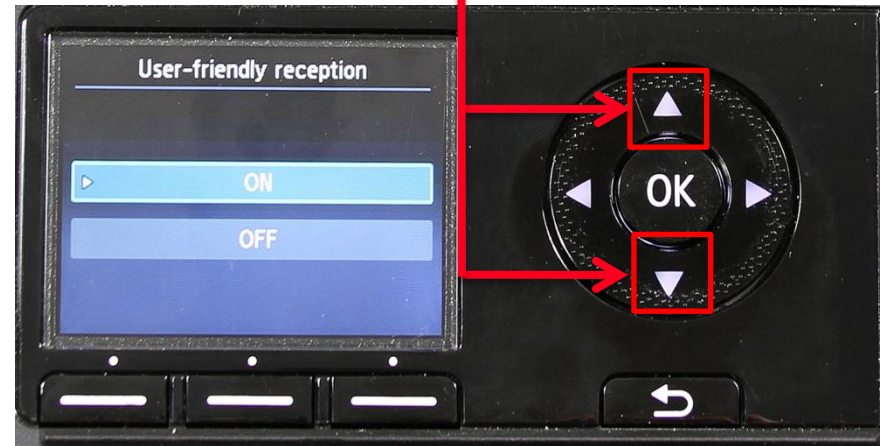
Step 11

The “User-friendly reception” screen will appear



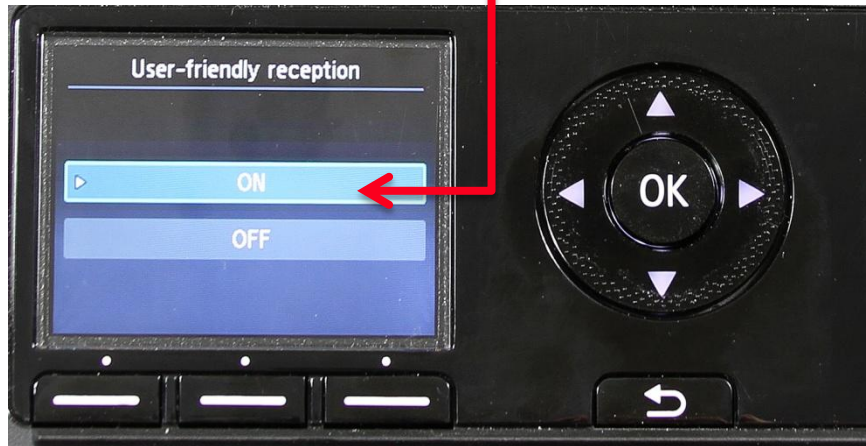
Step 12

Use the **UP** or **DOWN** button to select “ON”



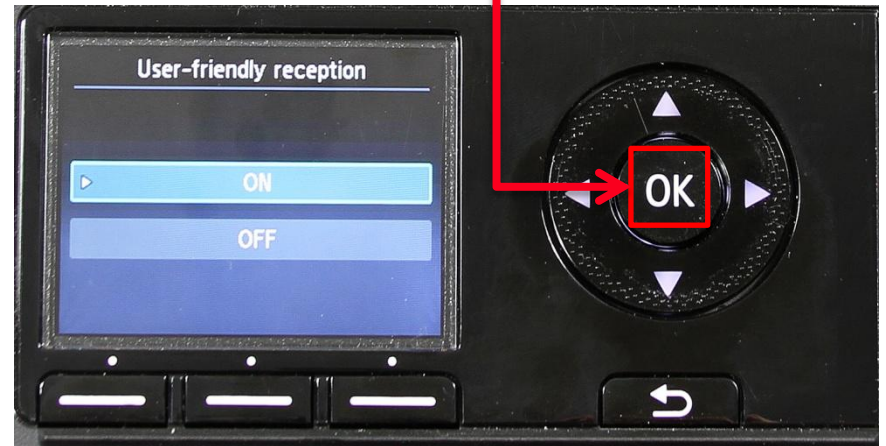
Step 13

Ensure "ON" is selected



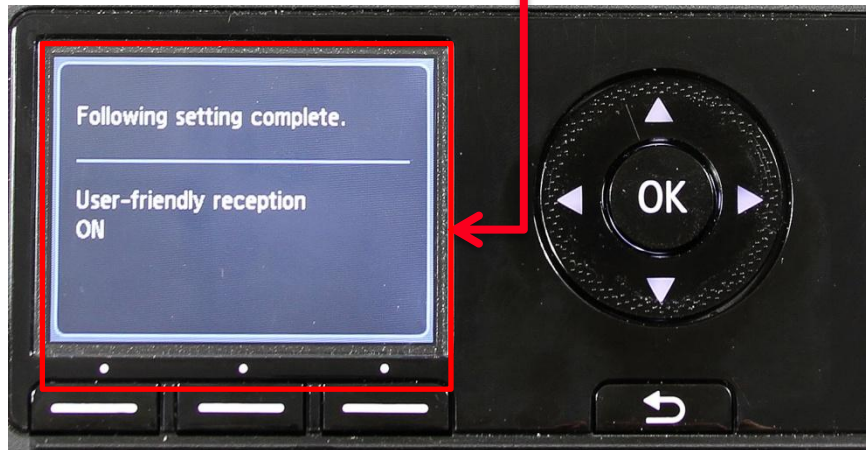
Step 14

Press the **OK** button



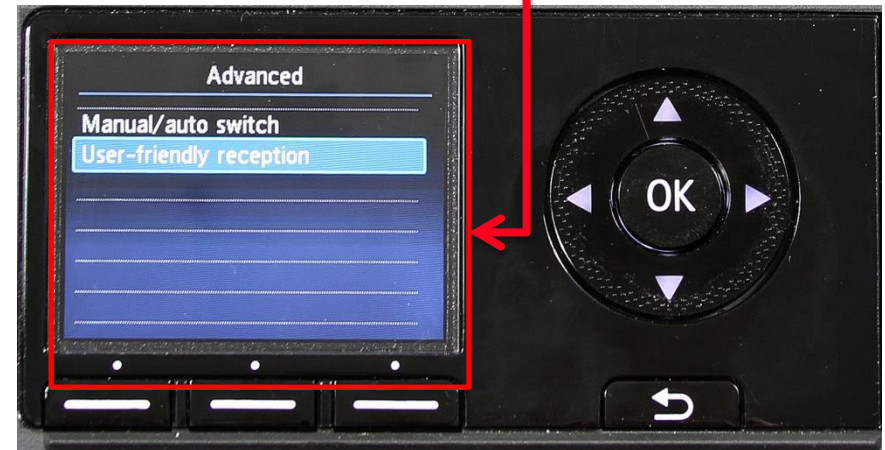
Step 15

A confirmation screen will appear briefly



Step 16

You will return to the "Advanced" selection screen



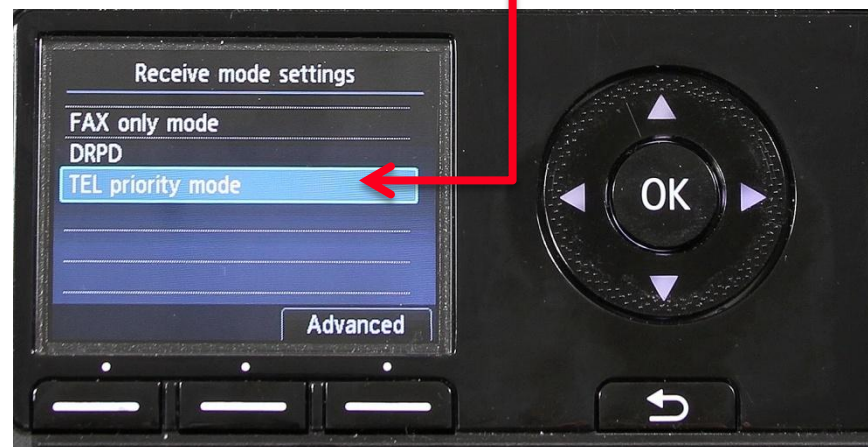
Step 17

Press the **BACK** button



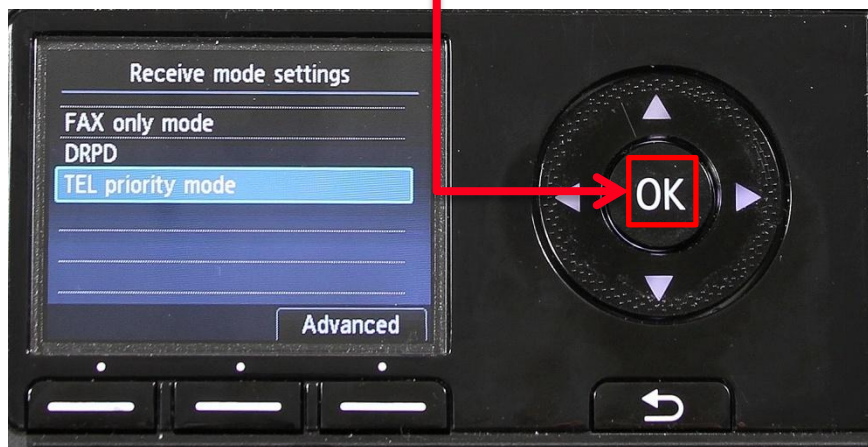
Step 18

You will return to the “Receive mode setting” screen. Confirm that “Tel priority mode” is selected



Step 19

Press the **OK** button



Step 20

You will return to the "Fax standby screen". The MX420 is ready to receive a fax



Receiving A Fax

To receive a fax:

- Pick up the handset on the phone connected to the MX420.
- Listen for fax tones.
- When the tones stop hang up the handset.
- The MX420 will receive the fax document.

IMPORTANT: In order to receive a fax, you must pick up the handset on a phone that is connected to the multifunction.

