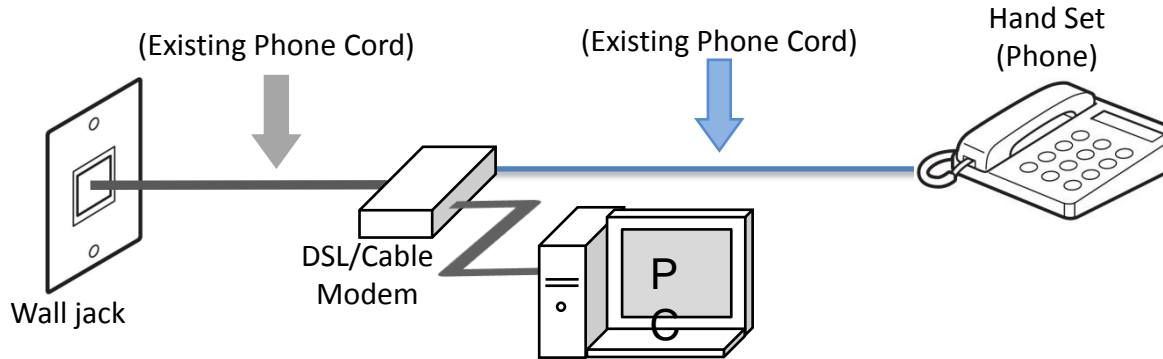


Setting Up Your MX350 In Default Mode (Tel Priority Mode) Without An Answering Machine DSL/Cable Modem Connection

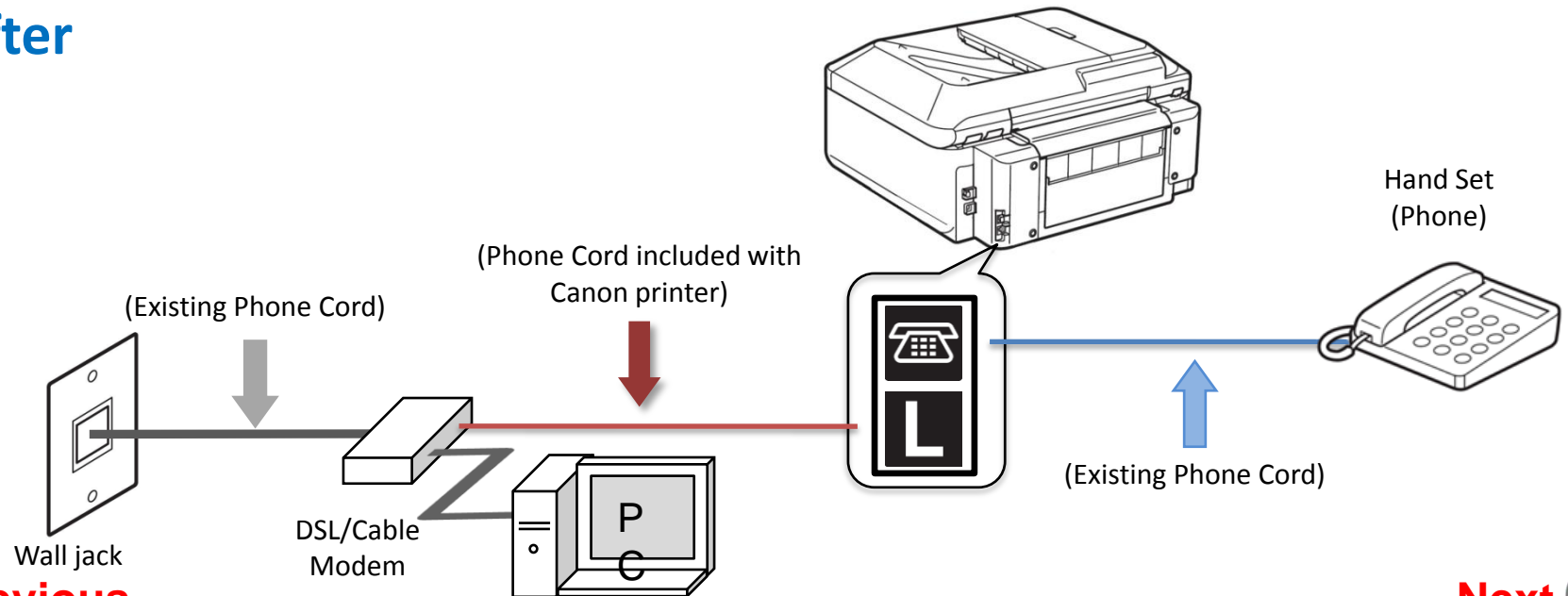
Connecting The Phone Lines

Fax to Phone Line Connection

Before



After

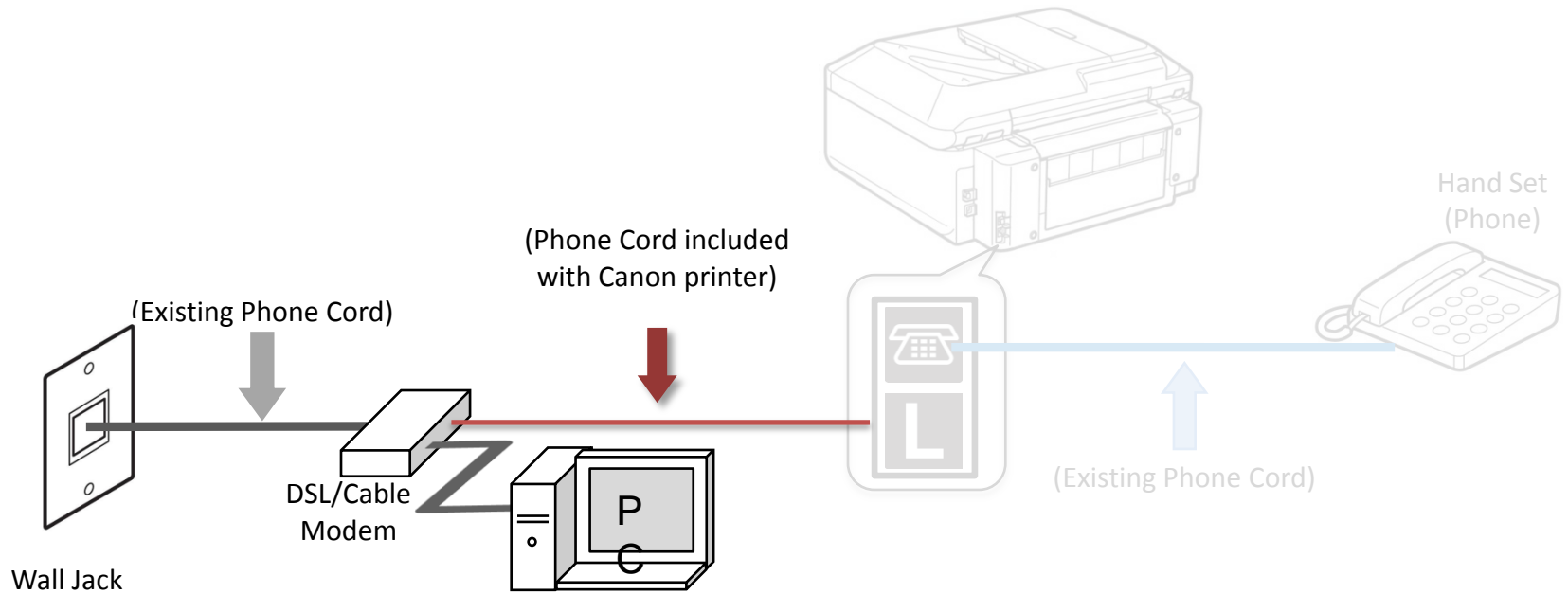


Previous

Next

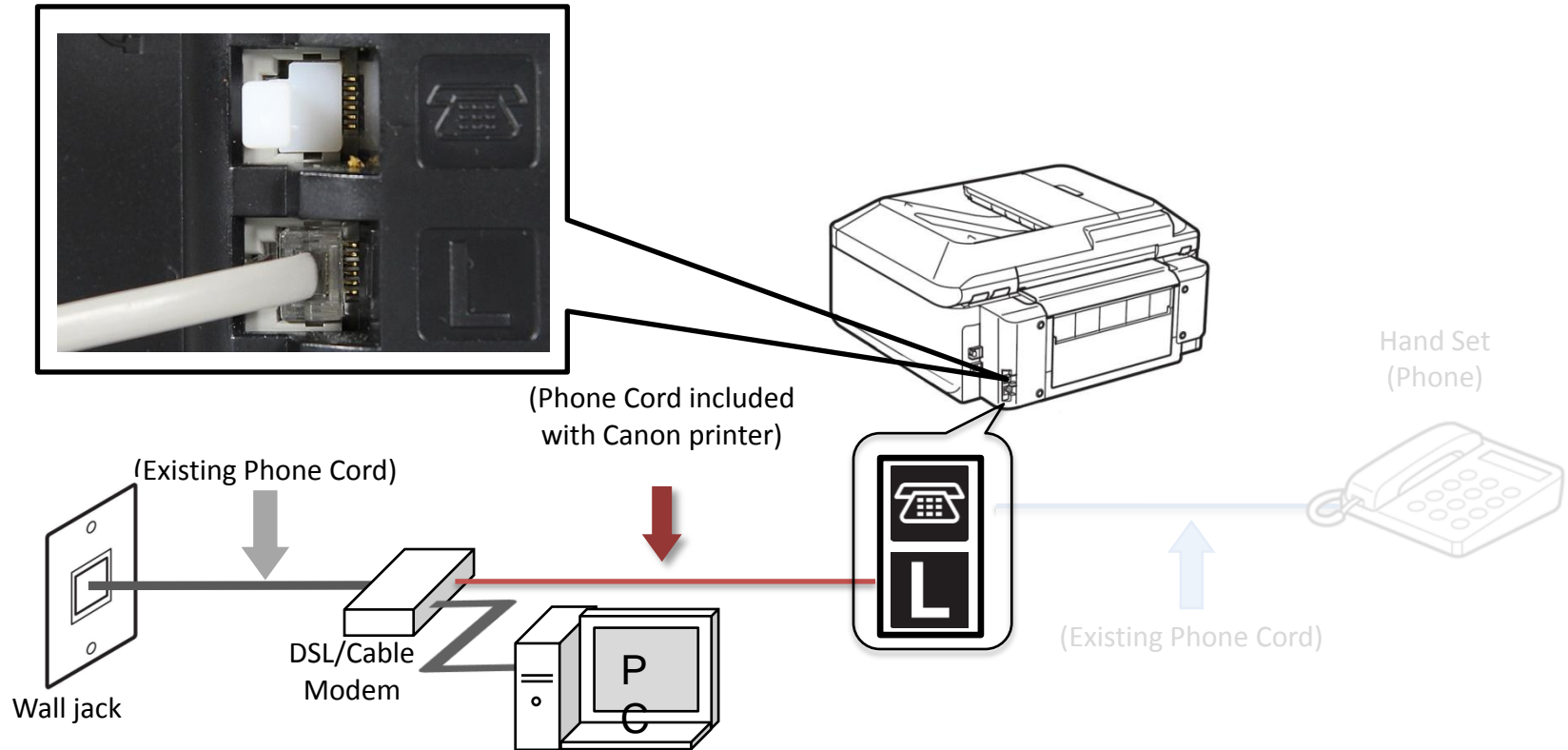
Fax to Phone Line Connection

- Plug the provided phone cord into the DSL/Cable Modem



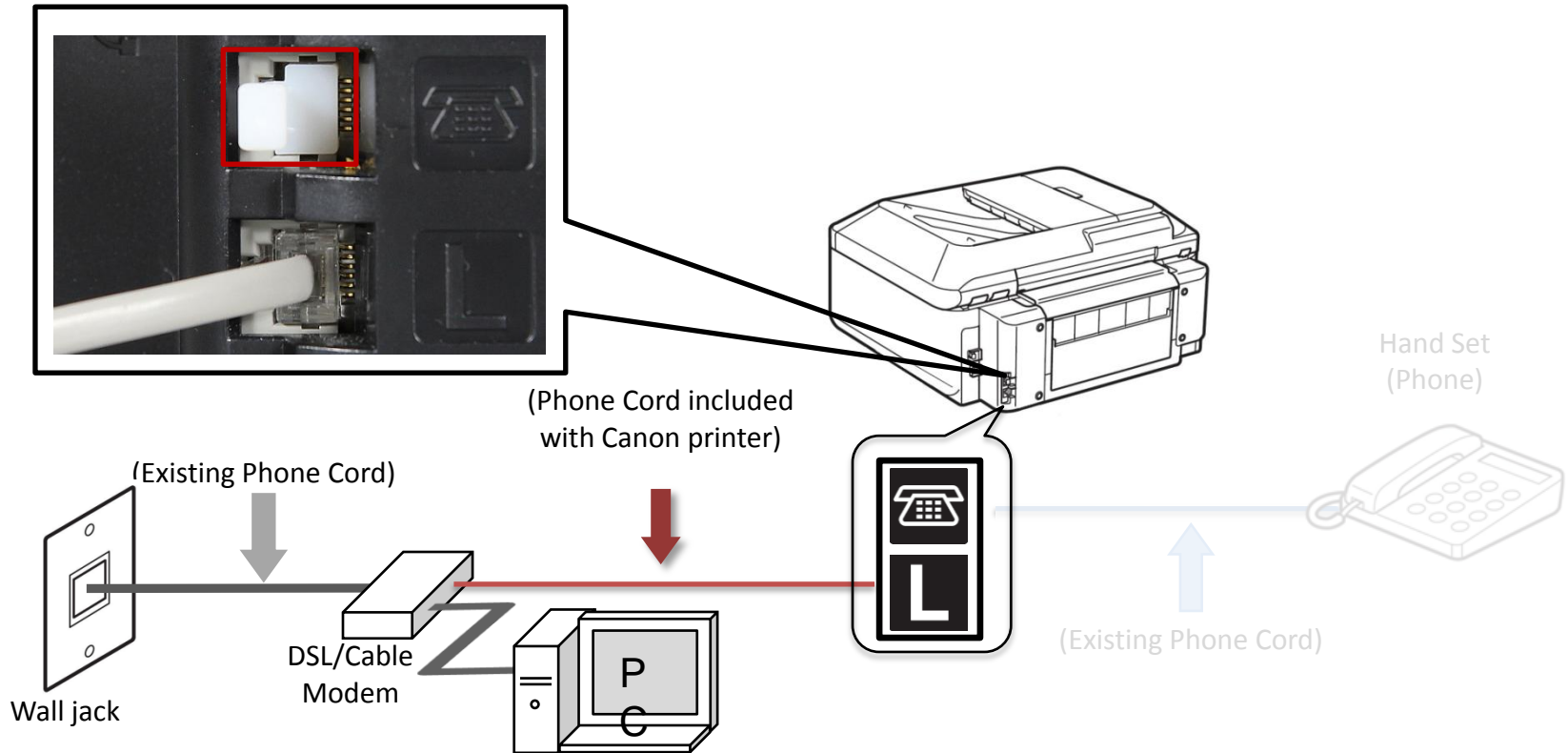
Fax to Phone Line Connection

- Plug the provided phone cord into the “L” jack in the rear of the multifunction



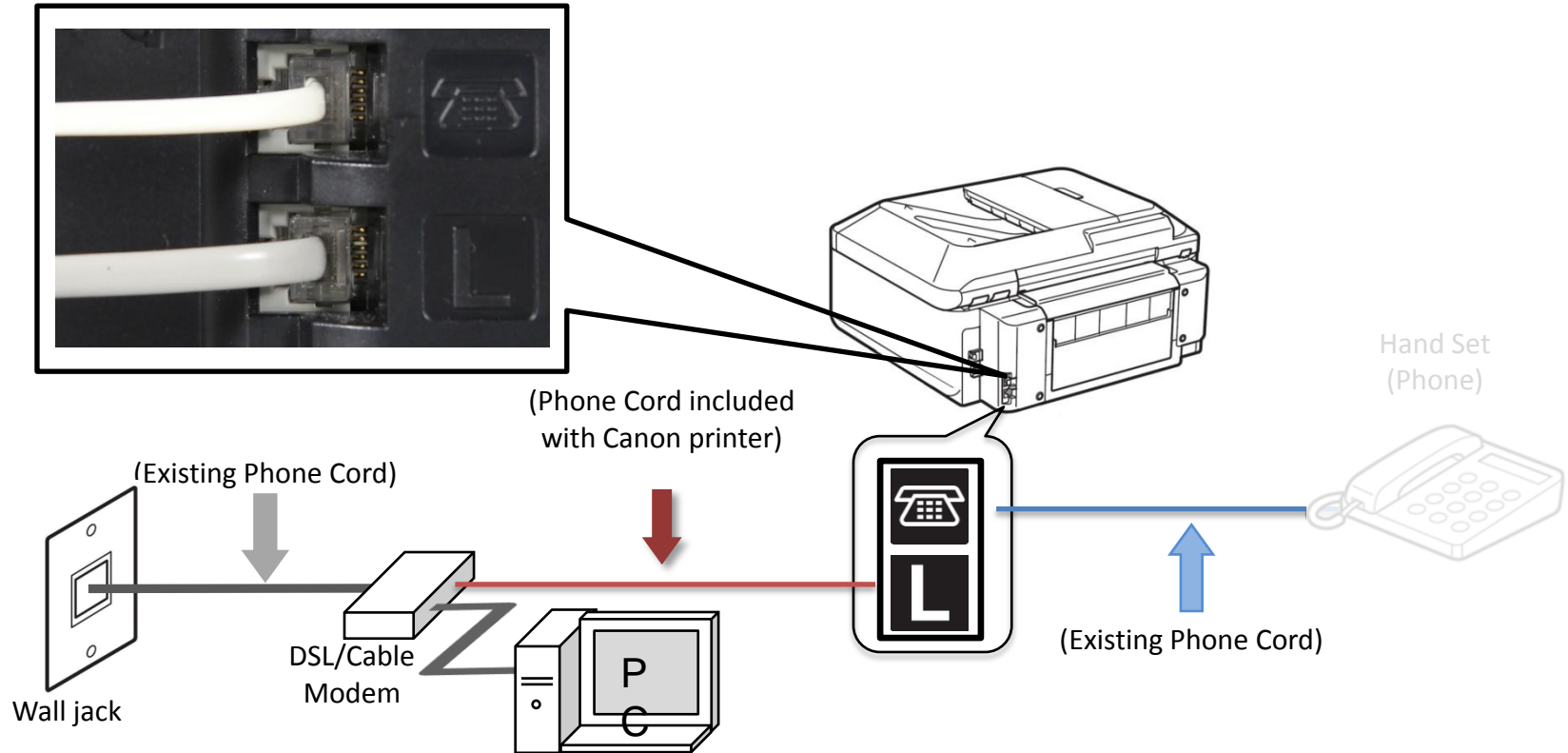
Fax to Phone Line Connection

- Remove the white plug from the upper jack



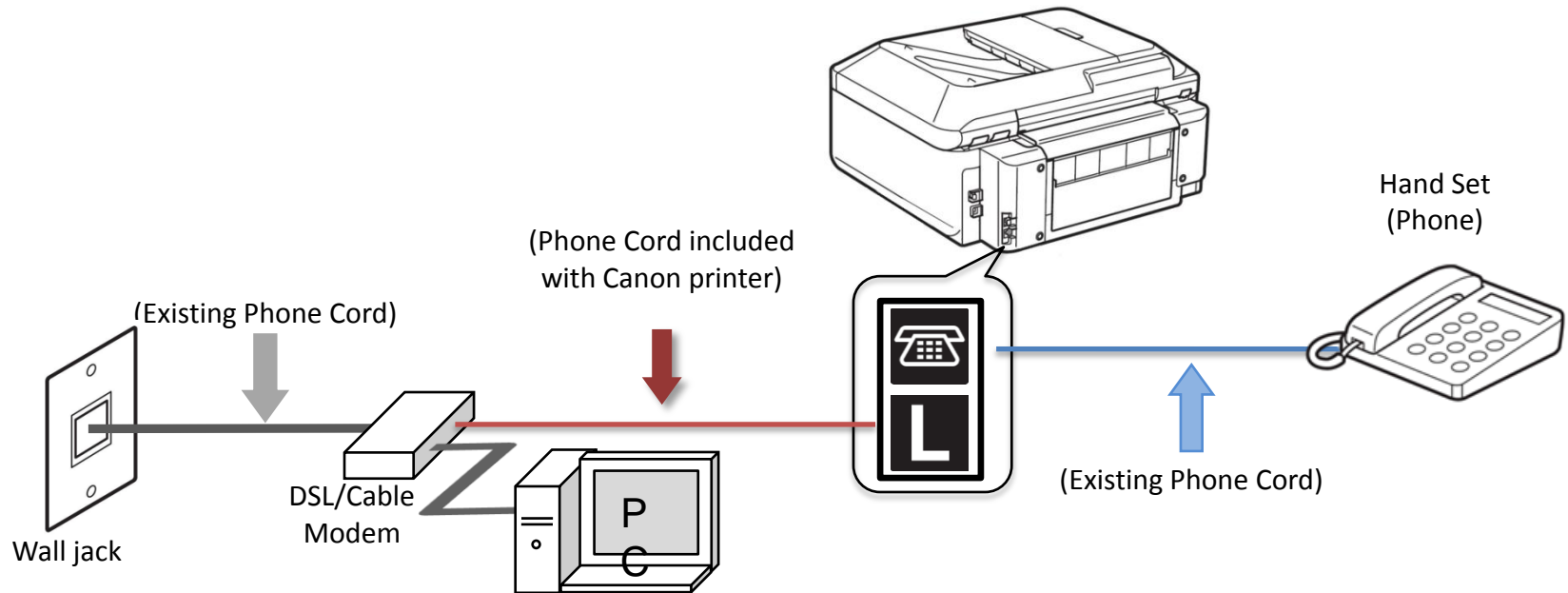
Fax to Phone Line Connection

- Plug the second phone cord into the jack marked with an image of a “telephone” located on the rear of the multifunction.



Fax to Phone Line Connection

- Plug the existing phone cord into the phone



Setting Up The Receive Mode

Step 1

Turn on the MX350 by pressing the **ON** button.



Step 2

Press the **FAX** button.



Step 3

The fax standby screen will appear.



Step 4

Press the center **FUNCTION** button.



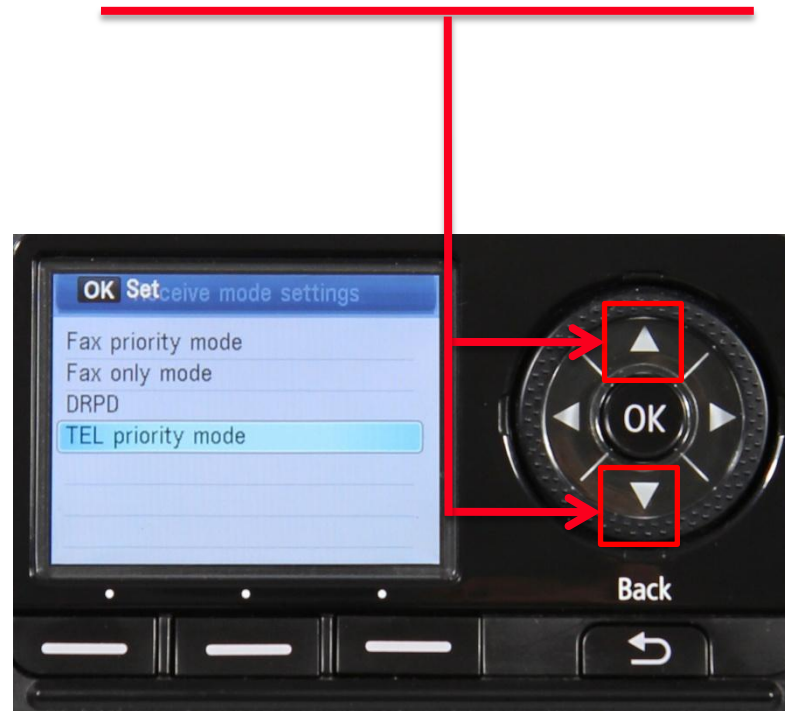
Step 5

The Receive mode settings screen will appear.



Step 6

Use the **UP** or **DOWN** button to select "TEL priority mode".



Step 7

Ensure that “TEL priority mode” is highlighted.



Step 8

Press the **OK** button.



Step 9

Your MX350 is now set to Tel priority mode. Notice that the mode is listed on the fax standby screen.



Receiving A Fax

To receive a fax:

- Pick up the handset on the phone connected to the MX350.
- Listen for fax tones.
- When the tones stop hang up the handset.
- The MX350 will receive the fax document.

IMPORTANT: In order to receive a fax, you must pick up the handset on a phone that is connected to the multifunction.

